

JUN 29 2011

State of New Mexico

## DISTRICT I

1625 N. FRENCH DR., BOBBS, NM 88240

**Energy, Minerals and Natural Resources Department**

Form C-102

Revised October 12, 2005

**Submit to Appropriate District Office**

**State Lease - 4 Copies**

**Fee Lease - 3 Copies**

## DISTRICT II

1301 W. GRAND AVENUE, ARTESIA, NM 88210

## OIL CONSERVATION DIVISION

1220 SOUTH ST. FRANCIS DR.

Santa Fe, New Mexico 87505

### DISTRICT III

1000 Rio Brazos Rd., Aztec, NM 87410

# WELL LOCATION AND ACREAGE DEDICATION PLAT

☒ AMENDED REPORT

1220 S. ST. FRANCIS DR., SANTA FE, NM 87505		Pool Code 44500		Pool Name MALJAMAR; YESO, WEST <i>KE</i>	
API Number 30-025-39862		Property Name JC FEDERAL			Well Number 53
Property Code 302508		Operator Name COG OPERATING, LLC			Elevation 4008'
OGRID No. 229137					

### Surface Location

UL or lot No.	Section	Township	Range	Lot Idn	Feet from the	North/South line	Feet from the	East/West line	County
N	22	17-S	32-E		784	SOUTH	1689	WEST	LEA

## Bottom Hole Location If Different From Surface

UL or lot No.	Section	Township	Range	Lot Idn	Feet from the	North/South line	Feet from the	East/West line	County
N	22	17-S	32-E		986	SOUTH	1658	WEST	LEA

Dedicated Acres	Joint or Infill	Consolidation Code	Order No.
40			

NO ALLOWABLE WILL BE ASSIGNED TO THIS COMPLETION UNTIL ALL INTERESTS HAVE BEEN CONSOLIDATED  
OR A NON-STANDARD UNIT HAS BEEN APPROVED BY THE DIVISION

### OPERATOR CERTIFICATION

*I hereby certify that the information herein is true and complete to the best of my knowledge and belief, and that this organization either owns a working interest or unleased mineral interest in the land including the proposed bottom hole location or has a right to drill this well at this location pursuant to a contract with an owner of such mineral or working interest, or to a voluntary pooling agreement or a compulsory pooling order heretofore entered by the division.*

Michael 6/8/11  
Signature Date

Chasity Jackson  
Printed Name

### SURVEYOR CERTIFICATION

*I hereby certify that the well location shown on this plat was plotted from field notes of actual surveys made by me or under my supervision, and that the same is true and correct to the best of my belief.*

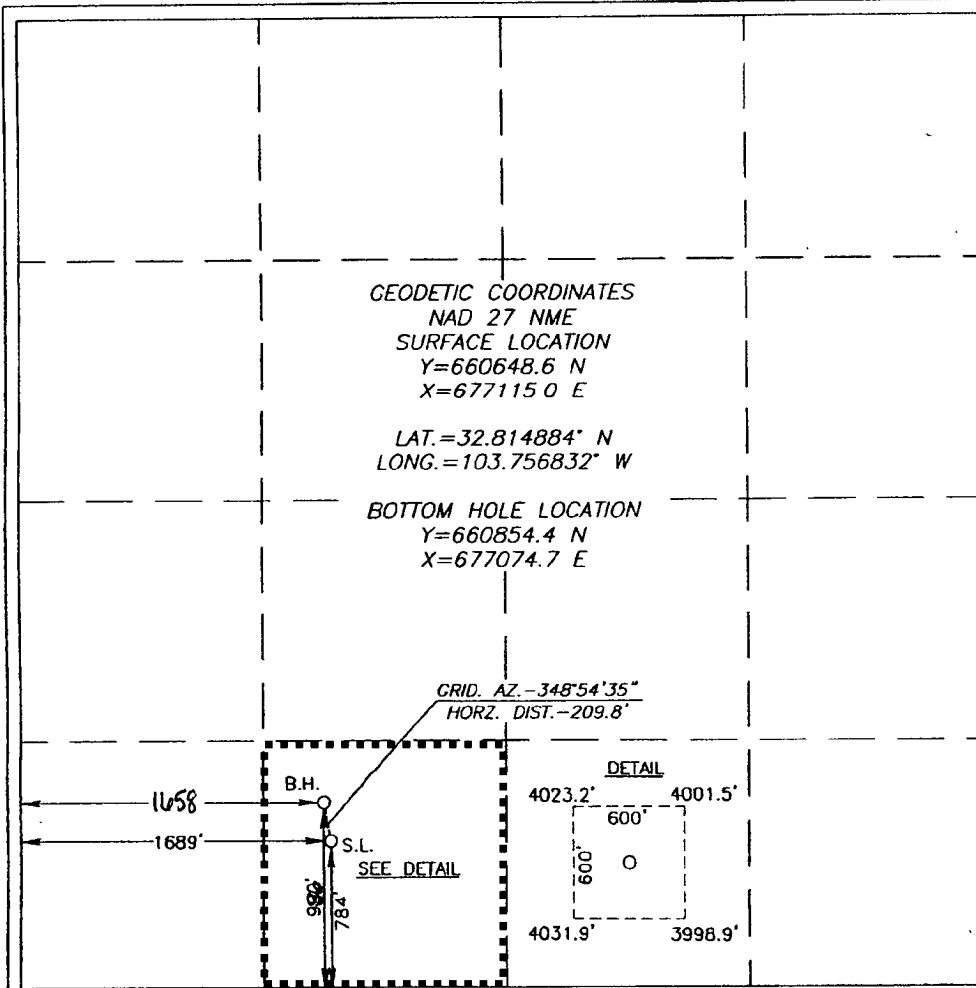
MARCH 31, 2010

Date Surveyed LA

Signature & Seal of  
Professional Surveyor

Barry H. Eason 4/15/10  
09 11 1036

Certificate No.	GARY EIDSON	12641
	RONALD J. EIDSON	3239



JUL 06 2011