

Submit 1 Copy To Appropriate District
Office
District I
1625 N. French Dr., Hobbs, NM 88240
District II
1301 W. Grand Ave., Artesia, NM 88210
District III
1000 Rio Brazos Rd., Aztec, NM 87410
District IV
1220 S. St. Francis Dr., Santa Fe, NM
87505

State of New Mexico
Energy, Minerals and Natural Resources

Form C-103
October 13, 2009

OIL CONSERVATION DIVISION
1220 South St. Francis Dr.
Santa Fe, NM 87505

HOBBS OCD
JUL 05 2011
RECEIVED

SUNDRY NOTICES AND REPORTS ON WELLS (DO NOT USE THIS FORM FOR PROPOSALS TO DRILL OR TO DEEPEN OR PLUG BACK TO A DIFFERENT RESERVOIR. USE "APPLICATION FOR PERMIT" (FORM C-101) FOR SUCH PROPOSALS.)		WELL API NO. 30-025-26520
1. Type of Well: Oil Well <input type="checkbox"/> Gas Well <input checked="" type="checkbox"/> Other Injection		5. Indicate Type of Lease STATE <input checked="" type="checkbox"/> FEE <input type="checkbox"/>
2. Name of Operator ConocoPhillips Company		6. State Oil & Gas Lease No.
3. Address of Operator 3300 N. "A" St., Bldg. 6 Midland, TX 79705		7. Lease Name or Unit Agreement Name East Vacuum Grayburg-San Andres Unit TRact 3328
4. Well Location Unit Letter M : 1155 feet from the WEST line and 250 feet from the SOUTH line Section 33 Township 17S Range 35E NMPM County LEA		8. Well Number 003
11. Elevation (Show whether DR, RKB, RT, GR, etc.) 3949'		9. OGRID Number 217817
		10. Pool name or Wildcat Vacuum; Grayburg-San Andres

12. Check Appropriate Box to Indicate Nature of Notice, Report or Other Data

NOTICE OF INTENTION TO:

PERFORM REMEDIAL WORK ☐ PLUG AND ABANDON ☐
TEMPORARILY ABANDON ☐ CHANGE PLANS ☐
PULL OR ALTER CASING ☐ MULTIPLE COMPL ☐
DOWNHOLE COMMINGLE ☐

SUBSEQUENT REPORT OF:

REMEDIAL WORK ☐ ALTERING CASING ☐
COMMENCE DRILLING OPNS. ☐ P AND A ☐
CASING/CEMENT JOB ☐

OTHER: ☐

OTHER: Repair Downhole Failure and re-test MIT ☒

13. Describe proposed or completed operations. (Clearly state all pertinent details, and give pertinent dates, including estimated date of starting any proposed work). SEE RULE 19.15.7.14 NMAC. For Multiple Completions: Attach wellbore diagram of proposed completion or recompletion.

ConocoPhillips repaired the downhole failure and re-ran MIT test, witnessed by Maxey Brown on 5-23-2011. Original chart attached and record of work performed attached.

Spud Date:

Rig Release Date:

I hereby certify that the information above is true and complete to the best of my knowledge and belief.

SIGNATURE

Jalyn N. Fiske

TITLE Regulatory Specialist

DATE 6-24-11

Type or print name Jalyn N. Fiske

E-mail address: Jalyn.Fiske@conocophillips.com PHONE: (432)688-6813

For State Use Only

APPROVED BY:

[Signature]

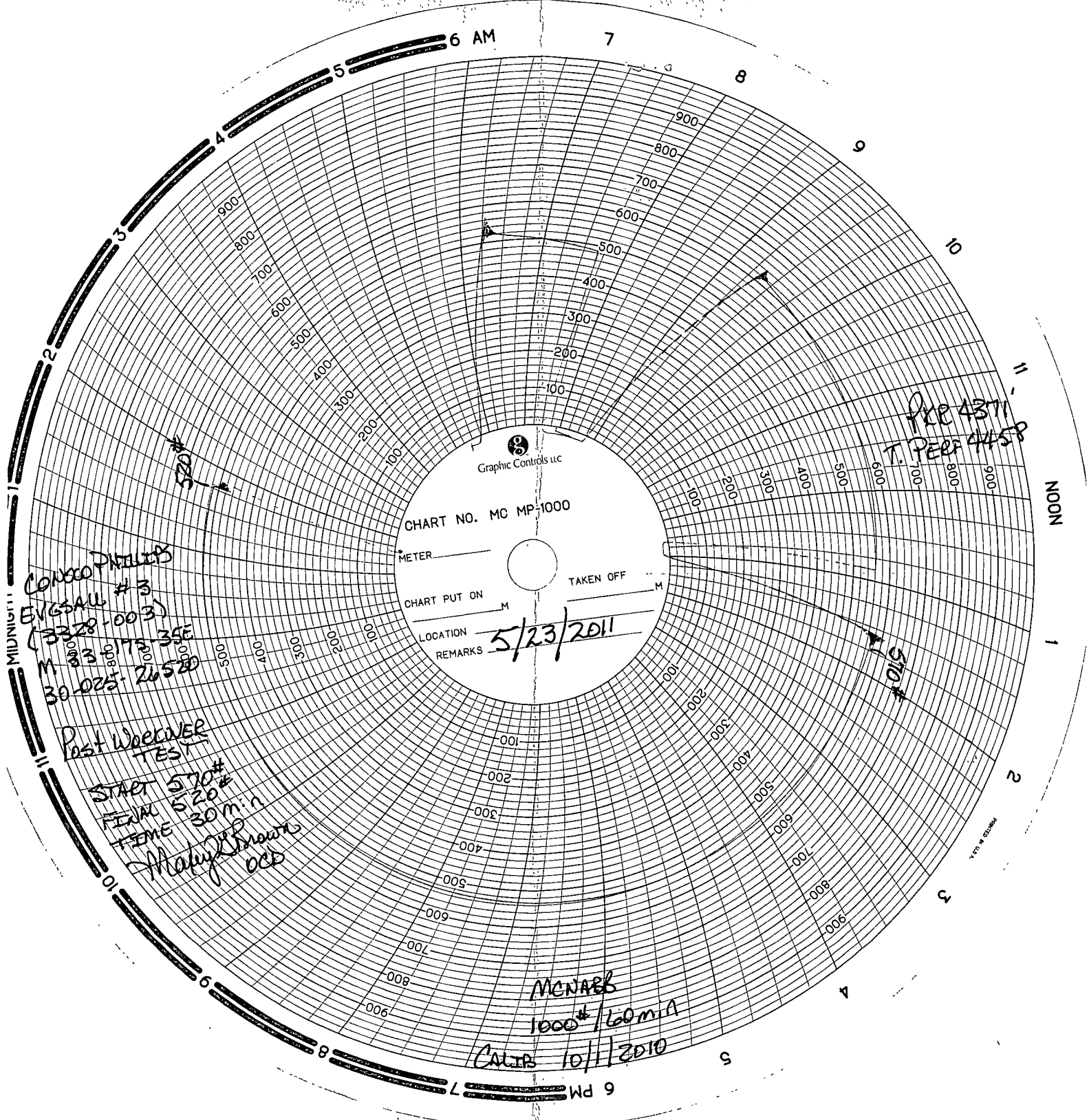
TITLE

State Seal

DATE

7-6-2011

Conditions of Approval (if any):



CONOCO PHILLIPS
EVGSALL #3
(3328-003)
M 338175-35E
30-025-26520

Post WOODRIVER
TEST
START 570#
FINISH 520#
TIME 30 min
Marty Brown OCS

MCNABB
1000#/60min
CALIB 10/1/2010

PRE 4371
T. PEG 4458

570#



L48 Mid-continent - Intranet Well Information System (WellView)

Friday, July 1, 2011

LOGON--	DATE--	WELL--	SITE--	MULTIWELL--	AFE--
RIG--	PDF REPORTS--	EMAIL ADMIN--	EQUIP PERF--	ACCOUNTABILITY--	
SAFETY--	REGULATORY--	OTHER--	GRAPHS--	SCORECARD--	
EXPORT--					

Operations Detail For: EAST VACUUM GB-SA UNIT 3328-003W

Job: REPAIR DOWNHOLE FAILURE

View All Jobs

DayNo (days)	Start Time	Dur (hrs)	DEPTH (ft)	Phase	Op Code	Activity Code	Trbl Class.	Operation
P NOTE	10/13/2008			Comment	Well Review			Past WV Action 01/01/2007 Tail pipe not present WV corrected Needs new inj profile, due to large variability in previous profiles 01/01/2006 Last inj profile 2003 Check WV schematic or correct tbg (tail pipe?) Add pay from 4638-4658 , RP Reservoir Engineer , Fcst Oil 31 45 , Fcst Gas 0, Fcst Water
P NOTE	03/01/2010				TEST & SET ANCHORS			Tested 3/1/2010
<u>1.00</u> (WELL INTERVENTION)	05/16/2011 06 30 00	2.00	0	SURPRD	RPEQPT	SFTY	P	ATTENDED SAFETY STAND DOWN AT RWI FACILITY CONDUCTED SAFETY MEETING WITH UNIT CREW, AND KILL TRUCK OPERATOR
<u>1.00</u> (WELL INTERVENTION)	05/16/2011 08 30 00	2.00	0	SURPRD	RPEQPT	OTHR	T Waiting, Wait on Contractors	WAITED 2 HRS TO MOVE IN DIRT TO FILL HOLE BY WELLHEAD
<u>1.00</u> (WELL INTERVENTION)	05/16/2011 10 30 00	1.50	0	SURPRD	RPEQPT	OTHR	P	MOVE IN RIG, AND RIG UP
<u>1.00</u> (WELL INTERVENTION)	05/16/2011 12 00 00	4.00	0	SURPRD	RPEQPT	KLWL	P	CHECK PRESSURE ON WELL , HAD 1300 PSI ON IT PUMP 100 BBLs DOWN TUBING AT 1 BPM, AND GOT WELL DOWN TO 250 PSI MOVE IN EQUIPMENT IN SHUT DOWN, AND SECURE WELL
<u>2.00</u> (WELL INTERVENTION)	05/17/2011 07 00 00	1.00	0	SURPRD	RPEQPT	SFTY	P	CONDUCTED SAFETY MEETING WITH UNIT CREW, PRO WIRELINE, AND SMITH INTERNATIONAL
<u>2.00</u> (WELL INTERVENTION)	05/17/2011 08 00 00	1.00	0	SURPRD	RPEQPT	KLWL	P	CHECK PRESSURE ON WELL , HAD 1000 PSI ON IT AND CASING 250 PSI BLED PRESSURE OFF CASING
<u>2.00</u> (WELL INTERVENTION)	05/17/2011 09 00 00	3.00	0	SURPRD	RPEQPT	SLKL	P	RIG UP PRO WIRELINE TAG FOR FILL TAG UP AT 4617' GOT WITH STEVE SLATER WHERE WE TAG UP AT, CALL IT GOOD SET 1 87 F PROFILE IN PACKER RIG DOWN PRO WIRELINE
<u>2.00</u> (WELL INTERVENTION)	05/17/2011 12 00 00	2.50	0	SURPRD	RPEQPT	PRTS	P	bled pressure off tubing, THEN TEST TUBING TO 1750 PSI , LEAK OFF 250 PSI HELD PRESSURE AT 1500 PSI TESTED CASING TO 500 PSI, PRESSURE BLED OFF 30 PSI BLED PRESSURE OFF
<u>2.00</u> (WELL INTERVENTION)	05/17/2011 14 30 00	2.50	0	SURPRD	RPEQPT	NUND	P	NIPPLE DOWN WELLHEAD, AND INSTALL B O P SHUT DOWN, AND SECURE WELL
<u>3.00</u> (WELL INTERVENTION)	05/18/2011 07 00 00	1.00	0	SURPRD	RPEQPT	SFTY	P	CONDUCTED SAFETY MEETING WITH UNIT CREW, TUBOSCOPE SCANNERS, AND SMITH INTERNATIONAL
<u>3.00</u> (WELL INTERVENTION)	05/18/2011 08 00 00	2.00	0	SURPRD	RPEQPT	OTHR	X Waiting, Wait on Offsite Equipment	CHECK PRESSURE ON WELL , HAD 0 PSI ON IT AND CASING 0 PSI WAITED 2 HRS ON WELLFOAM LAYDOWN MACHINE
<u>3.00</u> (WELL INTERVENTION)	05/18/2011 10 00 00	2.50	0	SURPRD	RPEQPT	TRIP	P	RIG UP LAY DOWN MACHINE, AND SCANNERS TRIP OUT SCANNING DOULINE TUBING, AND LAYING IT DOWN SCAN 137 JTS 1 RED, 3 GREEN, 5

3 00 (WELL INTERVENTION)	05/18/2011 12 30 00	1 00	0 SURPRD RPEQPT OTHR 0	P	JTS BLUE, AND 128 JTS YELLOW MOVE IN WORK STRING
3 00 (WELL INTERVENTION)	05/18/2011 13 30 00	3 50	0 SURPRD RPEQPT TRIP 0	P	MOVE IN WORK STRING TRIP IN WITH PACKER DOWN TO 4365' STOP 5' ABOVE INJECTION PACKER SHUT DOWN, AND SECURE WELL
4 00 (WELL INTERVENTION)	05/19/2011 07 00 00	1 00	0 SURPRD RPEQPT SFTY 0	P	CONDUCTED SAFETY MEETING WITH UNIT CREW, WELLFOAM LAYDOWN MACHINE, HUDSON PACKER, AND SMITH INTERNATIONAL
4 00 (WELL INTERVENTION)	05/19/2011 08 00 00	50	0 SURPRD RPEQPT KLWL 0	P	CHECK PRESSURE ON WELL , HAD 0 PSI. ON IT
4 00 (WELL INTERVENTION)	05/19/2011 08 30 00	1 50	0 SURPRD RPEQPT CIRC 0	P	CIRCULATED WELL WITH 120 BBLS OF BRINE .
4 00 (WELL INTERVENTION)	05/19/2011 10 00 00	2 00	0 SURPRD RPEQPT PRTS 0	P	TESTED INJECTION PACKER TO 600 PSI PRESSURE HELD GOOD RELEASE PACKER, AND TEST CASING FROM 4365' TO SURFACE FOR 30 MINUTES PRESSURE HELD GOOD
4 00 (WELL INTERVENTION)	05/19/2011 12 00 00	2 00	0 SURPRD RPEQPT TRIP 0	P	TRIP OUT LAYING DOWN WORKSTRING SHUT DOWN, AND SECURE WELL,
5 00 (WELL INTERVENTION)	05/20/2011 07 00 00	1 00	0 SURPRD RPEQPT SFTY 0	P	CONDUCTED SAFETY MEETING WITH UNIT CREW, WELLFOAM LAYDOWN MACHINE, HUDSON PACKER, PRECISION TECHN, HYDROSTATIC PIPE, AND SMITH INTERNATIONAL
5 00 (WELL INTERVENTION)	05/20/2011 08 00 00	50	0 SURPRD RPEQPT KLWL 0	P	CHECK PRESSURE ON WELL , HAD 0 PSI ON IT
5 00 (WELL INTERVENTION)	05/20/2011 08 30 00	5 50	0 SURPRD RPEQPT TRIP 0	P	RIG UP HYDROSTATIC TESTER TRIP IN WITH ON/OFF TOOL, 137 JTS DOULINE TUBING, AND 1 JT FIBERGLASS WRAP HYDROTEST TO 3500 PSI RIG DOWN HYDROSTATIC
5 00 (WELL INTERVENTION)	05/20/2011 14 00 00	1 00	0 SURPRD RPEQPT CIRC 0	P	CIRCULATED 100 BBLS PACKER FLUID
5 00 (WELL INTERVENTION)	05/20/2011 15 00 00	2 00	0 SURPRD RPEQPT NUND 0	P	LATCH ON ON/OFF TOOL SPACE OUT PACKER, AND LEFT 15 PTS ON PACKER NIPPLE DOWN B O P , AND FLANGE UP WELLHEAD. SHUT DOWN, AND SECURE WELL
6 00 (WELL INTERVENTION)	05/23/2011 07 00 00	2 00	0 SURPRD RPEQPT SFTY 0	P	ATTENDED SAFETY STAND DOWN AT RWI FACILITY CONDUCTED SAFETY MEETING WITH UNIT CREW, AND SMITH INTERNATIONAL
6 00 (WELL INTERVENTION)	05/23/2011 09 00 00	1 00	0 SURPRD RPEQPT OTHR 0	P	RUN A 30 MINUTE CHART, AND HAD NMOC WITNESS CHART
6 00 (WELL INTERVENTION)	05/23/2011 10 00 00	2 00	0 SURPRD RPEQPT OTHR 0	T Waiting, Wait on Offsite Equipment	CALL PRO WIRE LINE TO PULL PROFILE PLUG WAITED 2 HRS ON CREW
6 00 (WELL INTERVENTION)	05/23/2011 12 00 00	2 00	0 SURPRD RPEQPT SLKL 0	P	RIG CREW, AND RETRIEVE PROFILE PLUG
6 00 (WELL INTERVENTION)	05/23/2011 14 00 00	1 00	0 SURPRD RPEQPT MOB 0	P	GOT WITH MSO TO RELEASE WELL TO RIG DOWN UNIT MOVE TO EVGSAU 3127-398W

WellviewWeb is provided and supported by Lower 48 - Operations. Please address any comments or questions to [WellviewWeb Team](#).

All information found in the ConocoPhillips intranet is for internal use only and shall not be disclosed outside of ConocoPhillips. Access to and use of the ConocoPhillips intranet are for business use only.