

Submit 3 Copies To Appropriate District Office  
District I  
1625 N. French Dr., Hobbs, NM 88240  
District II  
1301 W. Grand Ave., Artesia, NM 88210  
District III  
1000 Rio Brazos Rd., Aztec, NM 87410  
District IV  
1220 S. St. Francis Dr., Santa Fe, NM 87505

State of New Mexico  
Energy, Minerals and Natural Resources

Form C-103  
Revised June 10, 2003

OIL CONSERVATION DIVISION  
1220 South St. Francis Dr.  
Santa Fe, NM 87505

WELL API NO.  
30-025-32500

5. Indicate Type of Lease

STATE ☐ FEE ☒

6. State Oil & Gas Lease No.

7. Lease Name or Unit Agreement Name

B.F. Harrison -C-

8. Well Number

3

9. OGRID Number

002799

10. Pool name or Wildcat

North Teague Tubb Associated

SUNDRY NOTICES AND REPORTS ON WELLS

(DO NOT USE THIS FORM FOR PROPOSALS TO DRILL OR TO DEEPEN OR PLUG BACK TO A DIFFERENT RESERVOIR. USE "APPLICATION FOR PERMIT" (FORM C-101) FOR SUCH PROPOSALS.)

1. Type of Well:

Oil Well ☒ Gas Well ☐ Other

2. Name of Operator

Breck Operating Corp.

3. Address of Operator

P.O. Box 911, Breckenridge, TX 76424

4. Well Location

Unit Letter L : 1980 feet from the South line and 925 feet from the West line

Section 9 Township 23S Range 37E NMPM Lea County

11. Elevation (Show whether DR, RKB, RT, GR, etc.)

12. Check Appropriate Box to Indicate Nature of Notice, Report or Other Data  
NOTICE OF INTENTION TO:

PERFORM REMEDIAL WORK ☐ PLUG AND ABANDON ☐

TEMPORARILY ABANDON ☐ CHANGE PLANS ☐

PULL OR ALTER CASING ☐ MULTIPLE COMPLETION ☐

OTHER: Downhole Commingle ☒

SUBSEQUENT REPORT OF:

REMEDIAL WORK ☐ ALTERING CASING ☐

COMMENCE DRILLING OPNS. ☐ PLUG AND ABANDONMENT ☐

CASING TEST AND CEMENT JOB ☐

OTHER: ☐

13. Describe proposed or completed operations. (Clearly state all pertinent details, and give pertinent dates, including estimated date of starting any proposed work). SEE RULE 1103. For Multiple Completions: Attach wellbore diagram of proposed completion or recompletion.

See attached Exhibit A

DHC Order No. HOB-0106

I hereby certify that the information above is true and complete to the best of my knowledge and belief.

SIGNATURE Donald R Craig TITLE District Engineer DATE January 28, 2005

Type or print name Donald R. Craig E-mail address: dcraig@breckop.com Telephone No. (254) 559-335 ext 269  
(This space for State use)

APPROVED BY Paul J. [Signature] TITLE PETROLEUM ENGINEER DATE FEB 01 2005

# BRECK OPERATING CORP.

P.O. BOX 911  
BRECKENRIDGE, TEXAS 76424-0911  
254-559-3355

## EXHIBIT A

Breck Operating Corp is requesting approval to down-hole-commingle the Blinebry with the Tubb in the BF Harrison "C" #3. The #3 is currently a Tubb producer in the North Teague Tubb Associated Field. The Blinebry was completed in the BF Harrison "C" #1 which is located approximately 290' feet from the subject well and in the same forty acre proration unit. In late 2001, the #1 was plugged back to test the Paddock which was unsuccessful. The #1 has been shut-in since that time.

The request for DHC is made based on Order R-11363.

The pools to be commingled are the Teague Lower Paddock Blinebry Associated and the North Teague Tubb Associated.

<96315>

Perforations for the intervals are: Blinebry 5472-5792 Tubb 6115-6268

The allocation method was based on the two most recent months of production on the two zones. In 10/2001, the Blinebry produced 38 BOPM 386 MCFPM. In 10/2004, the Tubb produced 85 BOPM 1355 MCFPM.

Based on these tests the allocation formula would be:

Blinebry Oil 31% Gas 22%

Tubb Oil 69% Gas 78%

The acreage is on Fee lands and the royalty interests are common across both horizons.

All produced fluids are compatible and commingling will not decrease the value of the production.



Oil CONSERVATION DIVISION

P.O. Box 2088

Santa Fe, New Mexico 87504-2088

NOTICE OF LOCATION

DISTRICT I  
P.O. Box 1980, Hobbs, NM 88240

DISTRICT II  
P.O. Drawer DD, Artesia, NM 88210

DISTRICT III  
1000 Rio Brazos Rd., Aztec, NM 87410

WELL LOCATION AND ACREAGE DEDICATION PLAT

All Distances must be from the outer boundaries of the section

Operator TEXACO EXPL. AND PROD. Inc.			Lease B.F. Harrison "C"		Well No. 3
Unit Letter L	Section 9	Township -23-South	Range -37-East	County Lea	
Actual Footage Location of Well: 1980 feet from the South line and 925 feet from the West line					
Ground level Elev. 3319	Producing Formation Drinkard		Pool Undesignated, Drinkard		Dedicated Acreage: 160 Acres

1. Outline the acreage dedicated to the subject well by colored pencil or hatchure marks on the plat below.

2. If more than one lease is dedicated to the well, outline each and identify the ownership thereof (both as to working interest and royalty).

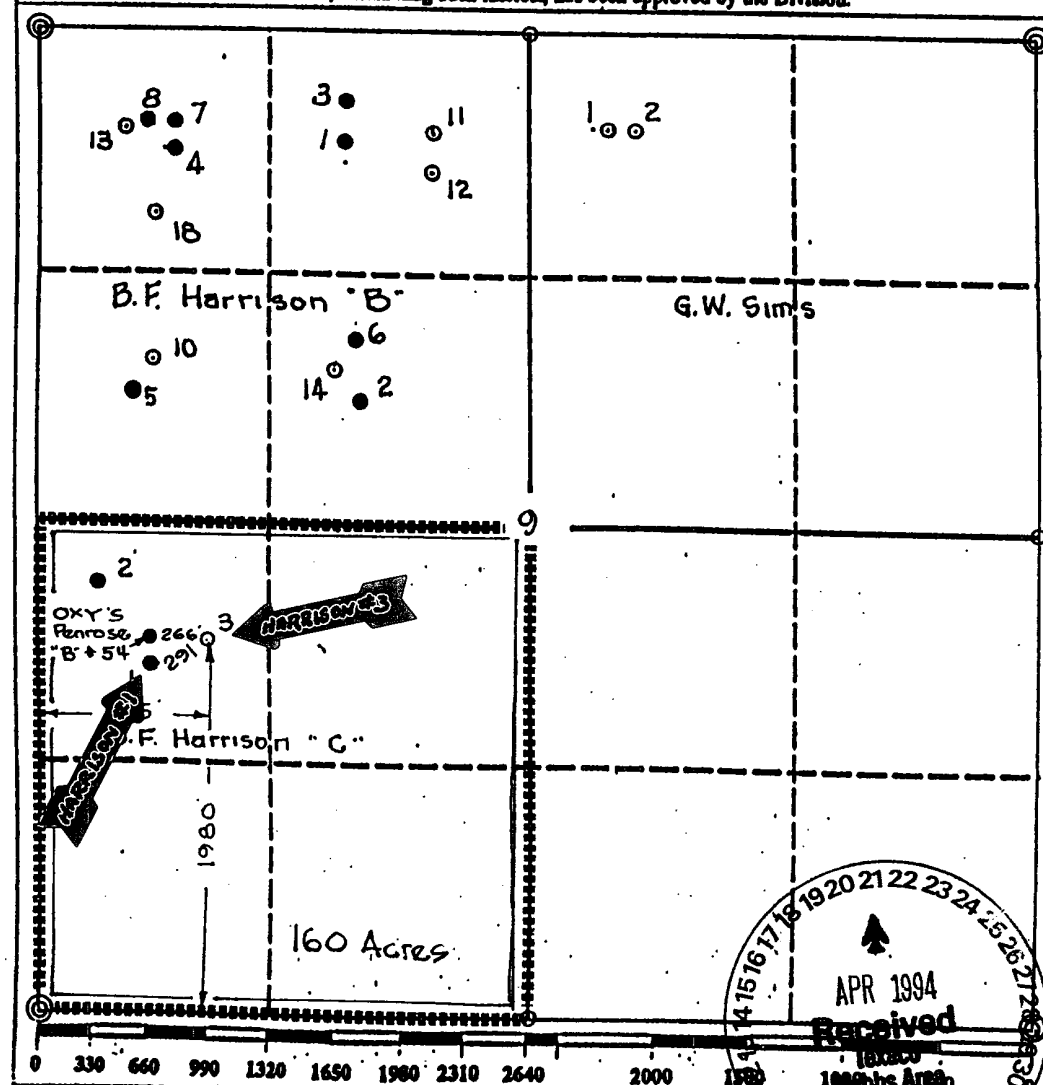
3. If more than one lease of different ownership is dedicated to the well, have the interest of all owners been consolidated by communitization, unitization, force-pooling, etc.?

☐ Yes ☐ No

If answer is "yes" type of consolidation

If answer is "no" list the owners and tract descriptions which have actually been consolidated. (Use reverse side of this form if necessary.)

No allowable will be assigned to the well until all interests have been consolidated (by communitization, unitization, forced-pooling, or otherwise) or until a non-standard unit, eliminating such interest, has been approved by the Division.



OPERATOR CERTIFICATION

I hereby certify that the information contained herein is true and complete to the best of my knowledge and belief.

Signature

Printed Name

Royce D. Mariott

Position

Division Surveyor

Company

Texaco Expl. & Prod.

Date

April 18, 1994

SURVEYOR CERTIFICATION

I hereby certify that the well location shown on this plat was plotted from field notes of actual surveys made by me or under my supervision, and that the same is true and correct to the best of my knowledge and belief.

Date Surveyed

April 11, 1994

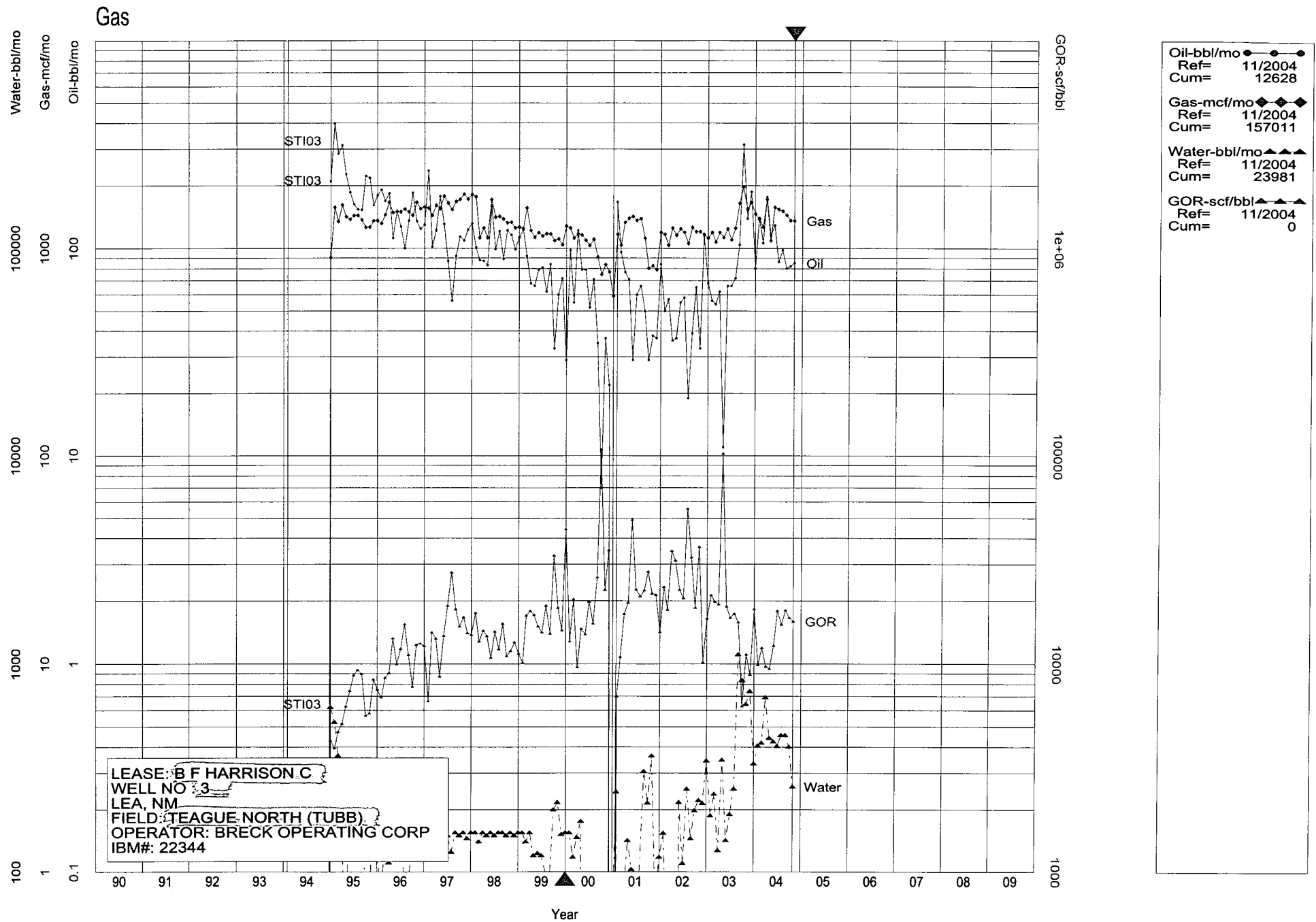
Signature & Seal of  
Professional Surveyor

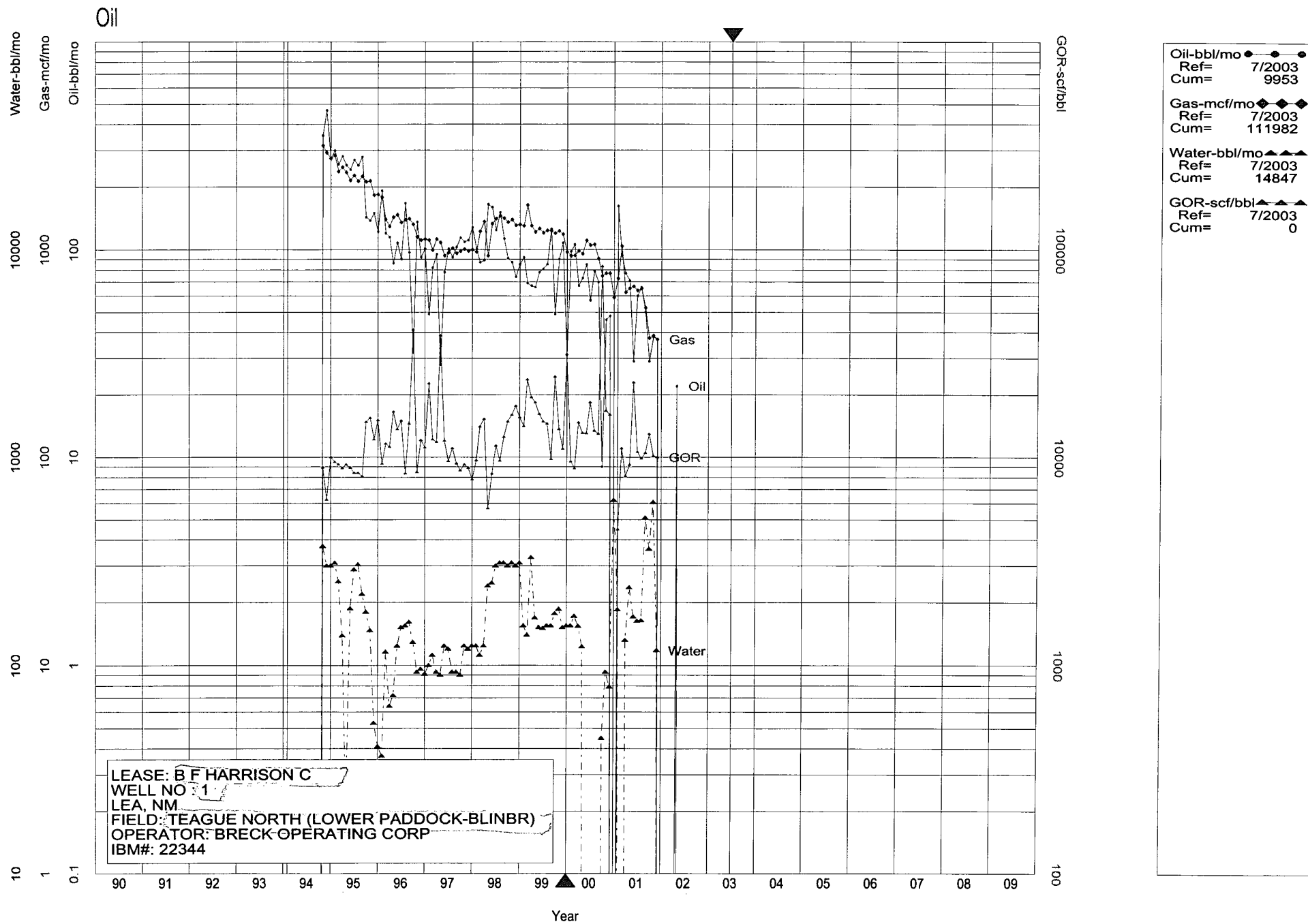
Certificate No.

7253 John S. Piper

Lea Co. FB. 10, Pg. 41

Exhibit B									
Last Three Years Production									
B.F. Harrison #1		Shut-in Blinebry Producer			B.F. Harrison #3		Current Tubb Producer		
Date	OIL	GAS			Date	OIL	GAS		
Jan-99	92	1301			Nov-01	37	790		
Feb-99	69	1637			Dec-01	84	1193		
Mar-99	67	1305			Jan-02	50	1168		
Apr-99	66	1216			Feb-02	57	1035		
May-99	78	1262			Mar-02	36	1253		
Jun-99	81	1206			Apr-02	37	1157		
Jul-99	85	1236			May-02	55	1243		
Aug-99	126	1233			Jun-02	58	1195		
Sep-99	49	1200			Jul-02	19	1055		
Oct-99	90	1231			Aug-02	39	1264		
Nov-99	108	1185			Sep-02	65	1206		
Dec-99	31	974			Oct-02	33	1202		
Jan-00	98	934			Nov-02	115	1167		
Feb-00	106	937			Dec-02	68	1119		
Mar-00	67	986			Jan-03	56	1193		
Apr-00	73	957			Feb-03	54	1072		
May-00	85	1108			Mar-03	62	1193		
Jun-00	57	1050			Apr-03	11	1129		
Jul-00	79	1061			May-03	66	1241		
Aug-00	70	908			Jun-03	66	1098		
Sep-00	9	749			Jul-03	72	1250		
Oct-00	46	770			Aug-03	104	1644		
Nov-00	48	770			Sep-03	315	1973		
Dec-00	0	590			Oct-03	139	1544		
Jan-01	162	727			Nov-03	187	1661		
Feb-01	94	1038			Dec-03	80	1463		
Mar-01	77	624			Jan-04	140	1381		
Apr-01	71	653			Feb-04	106	1265		
May-01	29	667			Mar-04	177	1720		
Jun-01	60	637			Apr-04	115	1089		
Jul-01	66	651			May-04	129	1575		
Aug-01	50	525			Jun-04	86	1541		
Sep-01	29	376			Jul-04	98	1511		
Oct-01	38	386			Aug-04	80	1441		
Nov-01	37	370			Sep-04	82	1359		
					Oct-04	85	1355		





**District I**  
1625 N. French Dr., Hobbs, NM 88240  
**District II**  
1301 W. Grand Avenue, Artesia, NM 88210  
**District III**  
1000 Rio Brazos Rd., Aztec, NM 87410  
**District IV**  
1220 S. St. Francis Dr., Santa Fe, NM 87505

State of New Mexico  
Energy, Minerals & Natural Resources Department  
**OIL CONSERVATION DIVISION**  
1220 South St. Francis Dr.  
Santa Fe, NM 87505

Form C-102  
Revised June 10, 2003  
Submit to Appropriate District Office  
State Lease - 4 Copies  
Fee Lease - 3 Copies

☐ AMENDED REPORT

**WELL LOCATION AND ACREAGE DEDICATION PLAT**

<sup>1</sup> API Number 30-025-32500		<sup>2</sup> Pool Code 96315		<sup>3</sup> Pool Name North Teague - Tubb Associated	
<sup>4</sup> Property Code 028005		<sup>5</sup> Property Name Harrison, B.F. "C"			<sup>6</sup> Well Number 3
<sup>7</sup> OGRID No. 002799		<sup>8</sup> Operator Name Breck Operating Corp.			<sup>9</sup> Elevation 3319

**<sup>10</sup> Surface Location**

UL or lot no. L	Section 9	Township 23-S	Range 37-E	Lot Idn	Feet from the 1980	North/South line South	Feet from the 925	East/West line West	County Lea
--------------------	--------------	------------------	---------------	---------	-----------------------	---------------------------	----------------------	------------------------	---------------

**<sup>11</sup> Bottom Hole Location If Different From Surface**

UL or lot no.	Section	Township	Range	Lot Idn	Feet from the	North/South line	Feet from the	East/West line	County
<sup>12</sup> Dedicated Acres 40	<sup>13</sup> Joint or Infill No	<sup>14</sup> Consolidation Code		<sup>15</sup> Order No.					

NO ALLOWABLE WILL BE ASSIGNED TO THIS COMPLETION UNTIL ALL INTERESTS HAVE BEEN CONSOLIDATED OR A NON-STANDARD UNIT HAS BEEN APPROVED BY THE DIVISION

<sup>16</sup> 	<b><sup>17</sup> OPERATOR CERTIFICATION</b> I hereby certify that the information contained herein is true and complete to the best of my knowledge and belief.  Signature Donald R. Craig Printed Name District Engineer Title and E-mail Address January 18, 2005 Date	
	<b><sup>18</sup> SURVEYOR CERTIFICATION</b> I hereby certify that the well location shown on this plat was plotted from field notes of actual surveys made by me or under my supervision, and that the same is true and correct to the best of my belief. Date of Survey Signature and Seal of Professional Surveyor: Certificate Number	

**District I**  
1625 N. French Dr., Hobbs, NM 88240  
**District II**  
1301 W. Grand Avenue, Artesia, NM 88210  
**District III**  
1000 Rio Brazos Rd., Aztec, NM 87410  
**District IV**  
1220 S. St. Francis Dr., Santa Fe, NM 87505

State of New Mexico  
Energy, Minerals & Natural Resources Department  
**OIL CONSERVATION DIVISION**  
1220 South St. Francis Dr.  
Santa Fe, NM 87505

Form C-102  
Revised June 10, 2003  
Submit to Appropriate District Office  
State Lease - 4 Copies  
Fee Lease - 3 Copies

☐ AMENDED REPORT

**WELL LOCATION AND ACREAGE DEDICATION PLAT**

<sup>1</sup> API Number 30-025-32500		<sup>2</sup> Pool Code 96314		<sup>3</sup> Pool Name Teague Lower Paddock - Blinbry Associated N.	
<sup>4</sup> Property Code 028005		<sup>5</sup> Property Name Harrison, B.F. "C"			<sup>6</sup> Well Number 3
<sup>7</sup> OGRID No. 002799		<sup>8</sup> Operator Name Breck Operating Corp.			<sup>9</sup> Elevation 3319

**<sup>10</sup> Surface Location**

UL or lot no. L	Section 9	Township 23-S	Range 37-E	Lot Idn	Feet from the 1980	North/South line South	Feet from the 925	East/West line West	County Lea
--------------------	--------------	------------------	---------------	---------	-----------------------	---------------------------	----------------------	------------------------	---------------

**<sup>11</sup> Bottom Hole Location If Different From Surface**

UL or lot no.	Section	Township	Range	Lot Idn	Feet from the	North/South line	Feet from the	East/West line	County
---------------	---------	----------	-------	---------	---------------	------------------	---------------	----------------	--------

<sup>12</sup> Dedicated Acres 40	<sup>13</sup> Joint or Infill No	<sup>14</sup> Consolidation Code	<sup>15</sup> Order No.
-------------------------------------	-------------------------------------	----------------------------------	-------------------------

NO ALLOWABLE WILL BE ASSIGNED TO THIS COMPLETION UNTIL ALL INTERESTS HAVE BEEN CONSOLIDATED OR A NON-STANDARD UNIT HAS BEEN APPROVED BY THE DIVISION

<sup>16</sup> 	<b><sup>17</sup> OPERATOR CERTIFICATION</b> I hereby certify that the information contained herein is true and complete to the best of my knowledge and belief.  Signature Donald R. Craig Printed Name District Engineer Title and E-mail Address January 18, 2005 Date			
	<b><sup>18</sup> SURVEYOR CERTIFICATION</b> I hereby certify that the well location shown on this plat was plotted from field notes of actual surveys made by me or under my supervision, and that the same is true and correct to the best of my belief. Date of Survey Signature and Seal of Professional Surveyor:			
	Certificate Number			