

District I  
1625 N. French Dr., Hobbs, NM 88240  
District II  
1301 W. Grand Avenue, Artesia, NM 88210  
District III  
1000 Rio Brazos Rd., Aztec, NM 87410  
District IV  
1220 S. St. Francis Dr., Santa Fe, NM 87505

State of New Mexico  
Energy, Minerals & Natural Resources

Form C-101  
May 27, 2004

Oil Conservation Division  
1220 S. St. Francis Dr.  
Santa Fe, NM 87505

Submit to appropriate District Office

☐ AMENDED REPORT

APPLICATION FOR PERMIT TO DRILL, RE-ENTER, DEEPEN, PLUGBACK, OR ADD A ZONE

<sup>1</sup> Operator Name and Address <b>Marathon Oil Company</b> <b>P.O. Box 3487</b>		<sup>2</sup> OGRID Number <b>014021</b>	
<sup>4</sup> Property Code <b>006478</b>		<sup>3</sup> API Number <b>30-025-37076</b>	
<sup>5</sup> Property Name <b>William Turner</b>		<sup>6</sup> Well No. <b>8</b>	
<sup>9</sup> Proposed Pool 1 <b>Penrose Skelly Grayburg</b>		<sup>10</sup> Proposed Pool 2	

<sup>7</sup> Surface Location

UL or lot no.	Section	Township	Range	Lot. Idn	Feet from the	North/South Line	Feet from the	East/West line	County
<b>I</b>	<b>29</b>	<b>21-S</b>	<b>37-E</b>		<b>1710'</b>	<b>South</b>	<b>330'</b>	<b>East</b>	<b>Lea</b>

<sup>8</sup> Proposed Bottom Hole Location If Different From Surface

UL or lot no.	Section	Township	Range	Lot. Idn	Feet from the	North/South Line	Feet from the	East/West line	County

Additional Well Location

<sup>11</sup> Work Type Code <b>N</b>	<sup>12</sup> Well Type Code <b>Oil</b>	<sup>13</sup> Cable/Rotary <b>R</b>	<sup>14</sup> Lease Type Code <b>P</b>	<sup>15</sup> Ground Level Elevation <b>3466'</b>
<sup>16</sup> Multiple	<sup>17</sup> Proposed Depth <b>4,500'</b>	<sup>18</sup> Formation <b>Grayburg</b>	<sup>19</sup> Contractor <b>Unknown</b>	<sup>20</sup> Spud Date <b>ASAP</b>
Depth to ground water <b>&gt; 50'</b>		Distance from nearest fresh water well		Distance from nearest surface water
Pit: Liner: Synthetic <input checked="" type="checkbox"/> <b>12 MIL</b> mils thick Clay <input type="checkbox"/> Pit Volume <b>2,000</b> bbls Drilling Method:				
Closed-Loop System <input type="checkbox"/> Fresh Water <input checked="" type="checkbox"/> Brine <input checked="" type="checkbox"/> Diesel/Oil-based <input type="checkbox"/> Gas/Air <input type="checkbox"/>				

<sup>21</sup> Proposed Casing and Cement Program

Hole Size	Casing Size	Casing weight/foot	Setting Depth	Sacks of Cement	Estimated TOC
<b>11"</b>	<b>8.625"</b>	<b>24#</b>	<b>400'</b>	<b>150</b>	<b>surface</b>
<b>7.875"</b>	<b>5.5"</b>	<b>15.5</b>	<b>4,500'</b>	<b>820</b>	<b>surface</b>

<sup>22</sup> Describe the proposed program. If this application is to DEEPEN or PLUG BACK, give the data on the present productive zone and proposed new productive zone. Describe the blowout prevention program, if any. Use additional sheets if necessary.

Surface casing: 150 Sks. Class C W/ 2% CACL<sub>2</sub>, yield 1.34, wt.-14.8 ppg  
Production casing: Lead-550 sks. class H 35/65 POZ w/ 6% gel, 5% salt, .25# cell., yield 2.14, ppg.12.4  
Tail- 270 sks. class H, 50/50 poz w/ 2% gel, 5% salt, .25# cell., 1.35 yield, wt. 14.2ppg.  
Mud program: 0-400' fresh water, CIRC pits or reserve, visc 28.  
400'-4,500'- Brine water, 10ppg., circ. Reserves, Lime PH9, VISC 29, gel if needed.  
BOPE- 11" 3M, Dual rams, rotating head-installed and tested to OCD rules 109 & 114

<sup>23</sup> I hereby certify that the information given above is true and complete to the best of my knowledge and belief. I further certify that the drilling pit will be constructed according to NMOCD guidelines ☒ a general permit ☐, or an (attached) alternative OCD-approved plan ☐.  
Signature: **mf mick**

Printed name: **Mike Mick**

Title: **Adv. Sr. Eng. Tech.**

E-mail Address: **mf mick@marathonoil.com**

Date:  
**1-31-05**

Phone:  
**713-296-3254**

OIL CONSERVATION DIVISION

Approved by:

Title: **PETROLEUM ENGINEER**

Approval Date:  
**FEB 01 2005**

Expiration Date: **2-1-06**

Conditions of Approval:

Attached ☐

# State of New Mexico

Energy, Minerals and Natural Resources Department

DISTRICT I  
1625 N. FRENCH DR., HOBBS, NM 88240

DISTRICT II  
1301 W. GRAND AVENUE, ARTESIA, NM 88210

DISTRICT III  
1000 Rio Brazos Rd., Aztec, NM 87410

DISTRICT IV  
1220 S. ST. FRANCIS DR., SANTA FE, NM 87505

## OIL CONSERVATION DIVISION 1220 SOUTH ST. FRANCIS DR. Santa Fe, New Mexico 87505

Form C-102  
Revised JUNE 10, 2003  
Submit to Appropriate District Office  
State Lease - 4 Copies  
Fee Lease - 3 Copies

### WELL LOCATION AND ACREAGE DEDICATION PLAT

☐ AMENDED REPORT

API Number <b>30-025-37076</b>	Pool Code <b>50350</b>	Pool Name <b>Penerose Skelly Grayburg</b>
Property Code <b>006478</b>	Property Name <b>WILLIAM TURNER</b>	Well Number <b>8</b>
OGRID No. <b>014021</b>	Operator Name <b>MARATHON OIL COMPANY</b>	Elevation <b>3466'</b>

#### Surface Location

UL or lot No.	Section	Township	Range	Lot Idn	Feet from the	North/South line	Feet from the	East/West line	County
<b>1</b>	<b>29</b>	<b>21-S</b>	<b>37-E</b>		<b>1710</b>	<b>SOUTH</b>	<b>330</b>	<b>EAST</b>	<b>LEA</b>

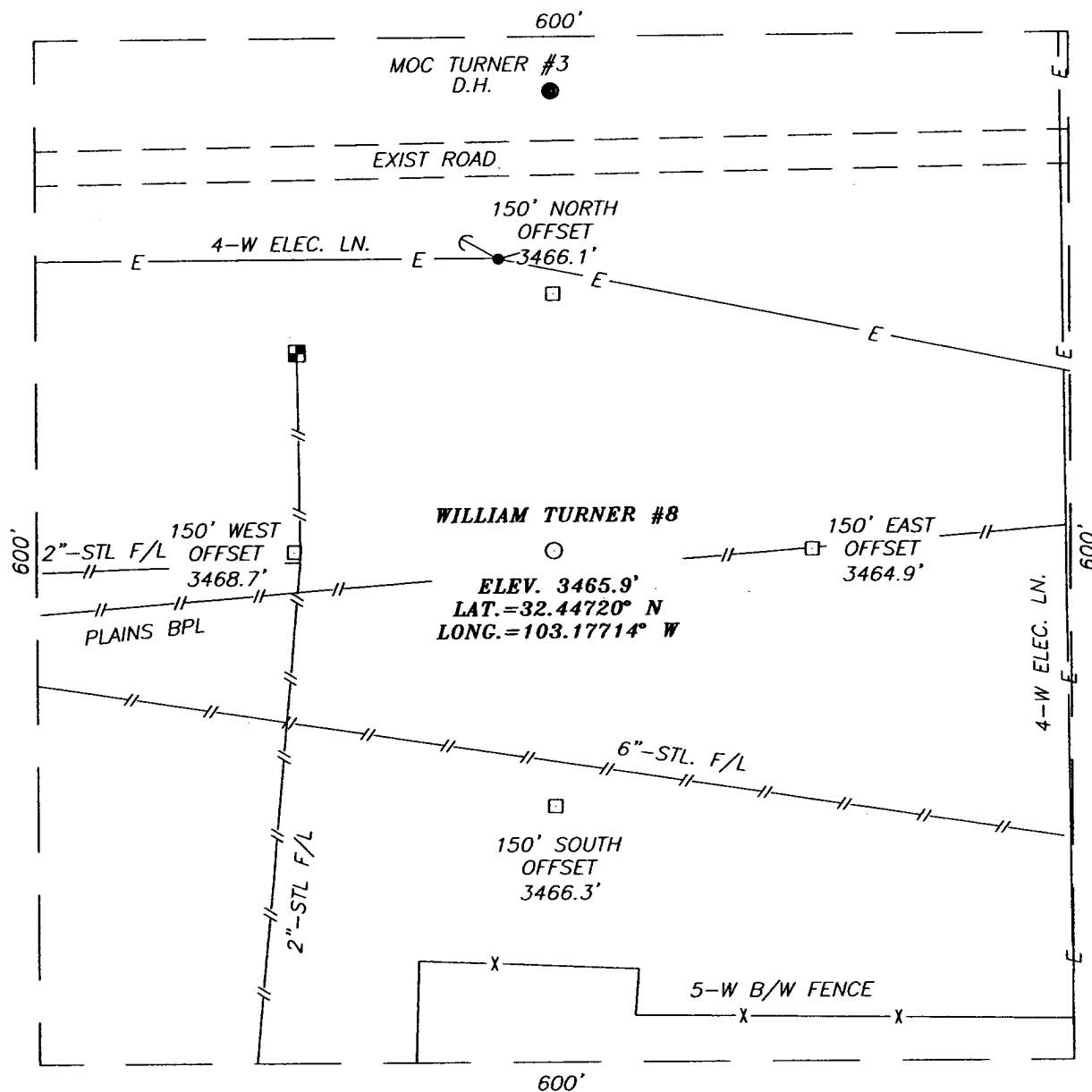
#### Bottom Hole Location If Different From Surface

UL or lot No.	Section	Township	Range	Lot Idn	Feet from the	North/South line	Feet from the	East/West line	County
Dedicated Acres <b>40 ACRES</b>	Joint or Infill	Consolidation Code	Order No.						

NO ALLOWABLE WILL BE ASSIGNED TO THIS COMPLETION UNTIL ALL INTERESTS HAVE BEEN CONSOLIDATED  
OR A NON-STANDARD UNIT HAS BEEN APPROVED BY THE DIVISION

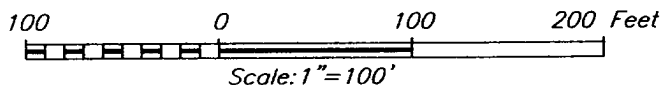
<p>GEODETIC COORDINATES NAD 27 NME</p> <p>Y=528337.7 N X=856675.2 E</p> <p>LAT.=32.44720° N LONG.=103.17714° W</p>		<p><b>OPERATOR CERTIFICATION</b></p> <p>I hereby certify the the information contained herein is true and complete to the best of my knowledge and belief.</p> <p><b>M7mick</b> Signature</p> <p><b>Mike Mick</b> Printed Name</p> <p><b>Adv. Sr. Eng. Tech</b> Title</p> <p><b>1-26-05</b> Date</p>
		<p><b>SURVEYOR CERTIFICATION</b></p> <p>I hereby certify that the well location shown on this plat was plotted from field notes of actual surveys made by me or under my supervision, and that the same is true and correct to the best of my belief.</p> <p><b>JANUARY 18, 2005</b></p> <p>Date Surveyed <b>JR</b></p> <p>Signature &amp; Seal of Professional Surveyor <b>GARY EIDSON</b> <b>04-14-1342</b></p> <p>Certificate No. <b>GARY EIDSON</b> 12641</p>

**SECTION 29, TOWNSHIP 21 SOUTH, RANGE 37 EAST, N.M.P.M.,**  
LEA COUNTY, NEW MEXICO



**DIRECTIONS TO LOCATION**

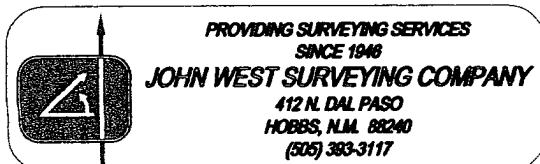
FROM THE INTERSECTION OF ST. HWY. #8 AND CO. RD. #E33 (N. TURNER RD.) GO NORTH ON N. TURNER RD. FOR APPROX. 0.4 MILES TO A CALICHE ROAD ON THE LEFT. TURN LEFT (WEST) AND GO APPROX. 350'. PROPOSED LOCATION IS APPROX. 250' SOUTH.



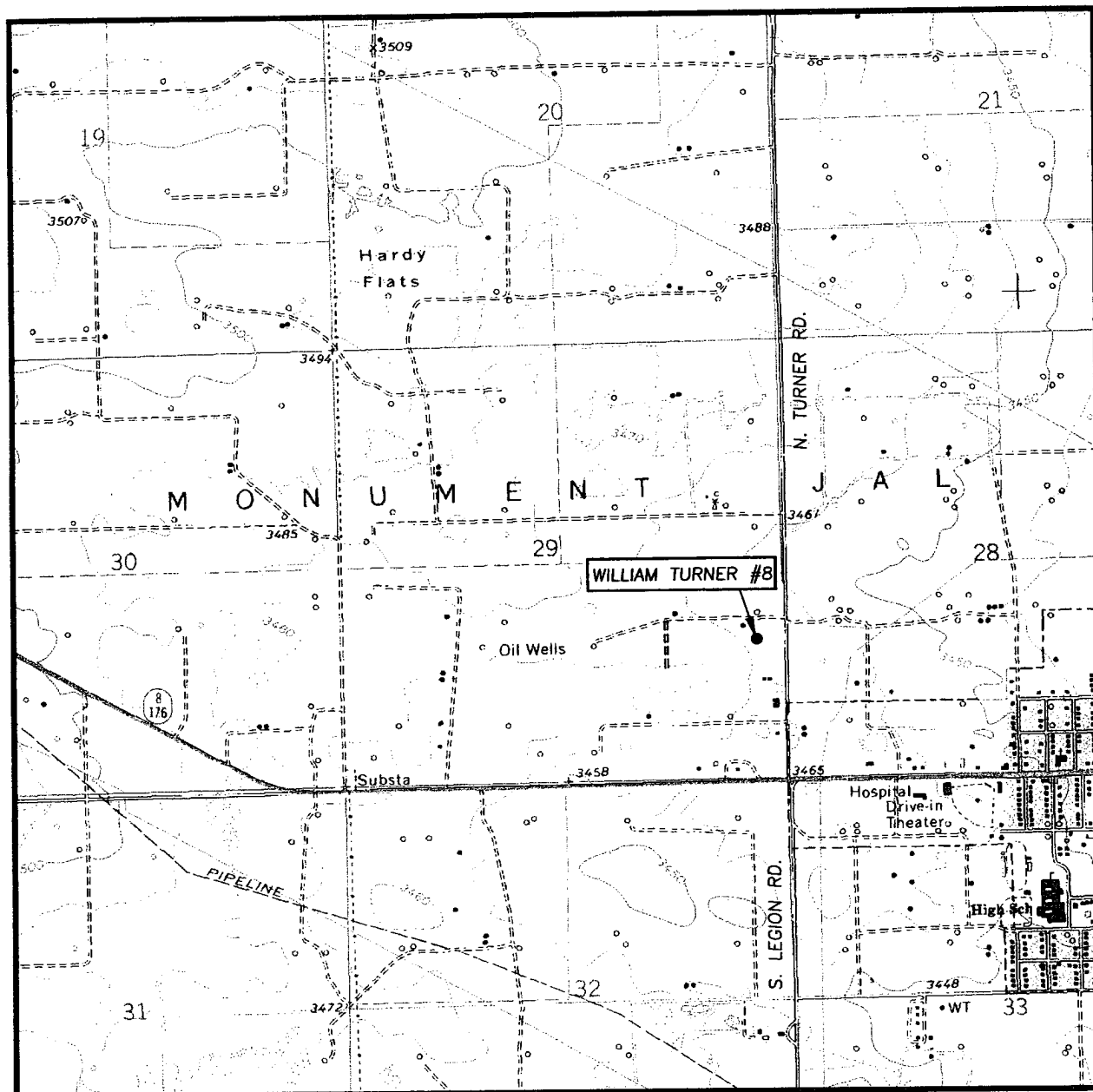
**MARATHON OIL COMPANY**

WILLIAM TURNER #8 WELL  
LOCATED 1710 FEET FROM THE SOUTH LINE  
AND 330 FEET FROM THE EAST LINE OF SECTION 29,  
TOWNSHIP 21 SOUTH, RANGE 37 EAST, N.M.P.M.,  
LEA COUNTY, NEW MEXICO.

Survey Date: 1/18/05	Sheet 1 of 1 Sheets
W.O. Number: 04.11.1342	Dr By: J.R.
Date: 1/19/05	Disk: CD#10
04111342	Scale: 1\"=100'



# LOCATION VERIFICATION MAP



SCALE: 1" = 2000'

CONTOUR INTERVAL:  
EUNICE, N.M. - 10'

SEC. 29 TWP. 21-S RGE. 37-E

SURVEY N.M.P.M.

COUNTY LEA

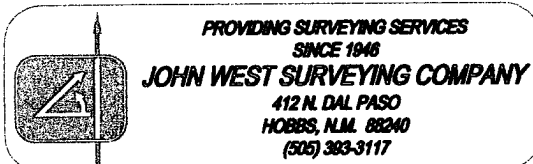
DESCRIPTION 1710' FSL & 330' FEL

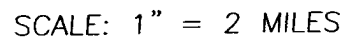
ELEVATION 3466'

OPERATOR MARATHON OIL COMPANY

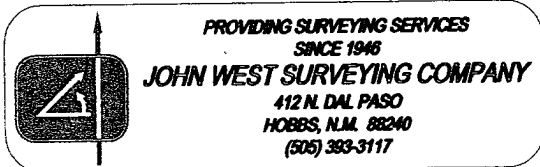
LEASE WILLIAM TURNER

U.S.G.S. TOPOGRAPHIC MAP  
EUNICE, N.M.

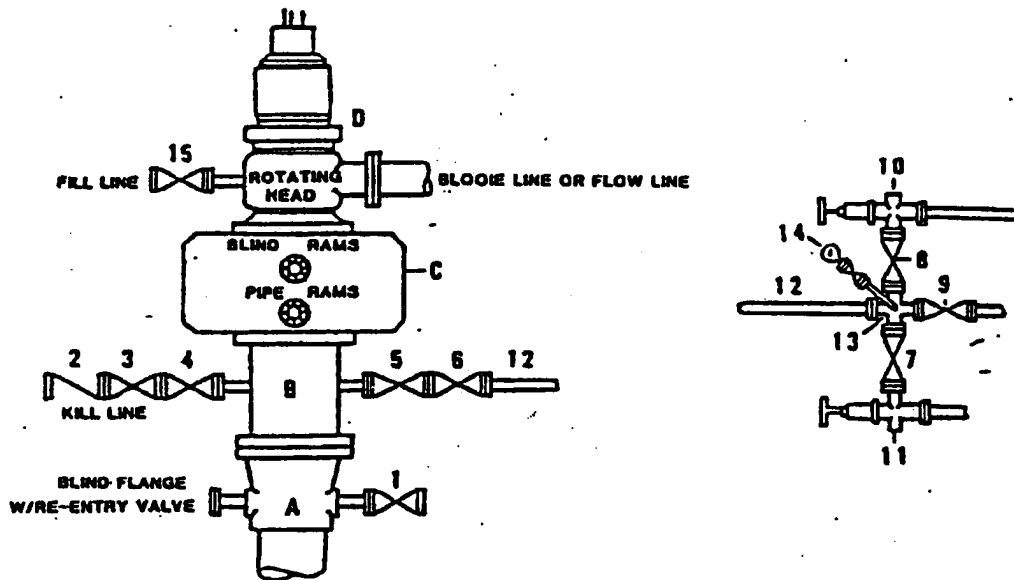




LEASE WILLIAM TURNER



## DRILLING CONTROL



### DRILLING CONTROL

#### MATERIAL LIST - CONDITION II - B

- |            |   |
|------------|---|
| A          | Wellhead  |
| B          | 3000# W.P. drilling spool with a 2" minimum flanged outlet for kill line and 3" minimum flanged outlet for choke line.  |
| C          | 3000# W.P. Dual ram type preventer, hydraulic operated with 1" steel, 3000# W.P. control lines (where sub-structure height is adequate, 2 - 3000# W.P. single ram type preventers may be utilized). |
| D          | Rotating Head with fill up outlet and extended Bore Line.   |
| 1,2,4,7,8, | 2" minimum 3000# W.P. flanged full opening steel gate valve, or Halliburton Lo Torc Plug valve.   |
| 2          | 2" minimum 3000# W.P. back pressure valve.  |
| 5,6,9      | 3" minimum 3000# W.P. flanged full opening steel gate valve, or Halliburton Lo Torc Plug valve.   |
| 12         | 3" minimum schedule 80, Grade "B", seamless line pipe.  |
| 13         | 2" minimum x 3" minimum 3000# W.P. flanged cross.   |
| 10,11      | 2" minimum 3000# W.P. adjustable choke bodies.  |
| 14         | Cameron Mud Gauge or equivalent (location optional in choke line).  |
| 15         | 2" minimum 3000# W.P. flanged or threaded full opening steel gate valve, or Halliburton Lo Torc Plug valve.   |

District I  
1625 N. French Dr., Hobbs, NM 88240  
District II  
1301 W. Grand Avenue, Artesia, NM 88210  
District III  
1000 Rio Brazos Road, Aztec, NM 87410  
District IV  
1220 S. St. Francis Dr., Santa Fe, NM 87505

State of New Mexico  
Energy Minerals and Natural Resources

Oil Conservation Division  
1220 South St. Francis Dr.  
Santa Fe, NM 87505

Form C-144  
March 12, 2004

For drilling and production facilities, submit to appropriate NMOCD District Office.  
For downstream facilities, submit to Santa Fe office

**Pit or Below-Grade Tank Registration or Closure**

Is pit or below-grade tank covered by a "general plan"? Yes ☐ No ☒

Type of action: Registration of a pit or below-grade tank ☐ Closure of a pit or below-grade tank ☐

Operator: Marathon Oil Co. Telephone: 713-296-3254 mail address: mf Mick@marathonoil.co

Address: P.O. Box 3487 Houston, Tx. 77253

Facility or well name: William Turner # 8 API #: 30-025-37076 U/L or Qtr/Qtr\_NESE\_Sec 29 T 21S R 37E

County: LEA Latitude \_\_\_\_\_ Longitude \_\_\_\_\_ NAD: 1927 ☐ 1983 ☐ Surface Owner Federal ☐ State ☐ Private ☒ Indian ☐

**Pit**

Type: Drilling ☒ Production ☐ Disposal ☐

Workover ☐ Emergency ☐

Lined ☒ Unlined ☐

Liner type: Synthetic ☒ Thickness 12 mil Clay ☐ Volume 2000 bbl

**Below-grade tank**

Volume: \_\_\_\_\_ bbl Type of fluid: \_\_\_\_\_

Construction material: \_\_\_\_\_

Double-walled, with leak detection? Yes ☐ If not, explain why not. \_\_\_\_\_

Depth to ground water (vertical distance from bottom of pit to seasonal high water elevation of ground water.)

Less than 50 feet	(20 points)
50 feet or more, but less than 100 feet	(10 points)
100 feet or more <b>X</b>	( 0 points)

Wellhead protection area: (Less than 200 feet from a private domestic water source, or less than 1000 feet from all other water sources.)

Yes	(20 points)
No <b>X</b>	( 0 points)

Distance to surface water: (horizontal distance to all wetlands, playas, irrigation canals, ditches, and perennial and ephemeral watercourses.)

Less than 200 feet	(20 points)
200 feet or more, but less than 1000 feet	(10 points)
1000 feet or more <b>X</b>	( 0 points)

**Ranking Score (Total Points)**

**If this is a pit closure:** (1) attach a diagram of the facility showing the pit's relationship to other equipment and tanks. (2) Indicate disposal location:

onsite ☒ offsite ☐ If offsite, name of facility \_\_\_\_\_. (3) Attach a general description of remedial action taken including remediation start date and end date. (4) Groundwater encountered: No ☐ Yes ☐ If yes, show depth below ground surface \_\_\_\_\_ ft. and attach sample results. (5) Attach soil sample results and a diagram of sample locations and excavations.

I hereby certify that the information above is true and complete to the best of my knowledge and belief. I further certify that the above-described pit or below-grade tank has been/will be constructed or closed according to NMOCD guidelines ☒, a general permit ☐, or an (attached) alternative OCD-approved plan ☐.

Date: 1-26-05

Printed Name/Title Mike Mick- Adv. Sr. Eng. Tech

Signature mf Mick

Your certification and NMOCD approval of this application/closure does not relieve the operator of liability should the contents of the pit or tank contaminate ground water or otherwise endanger public health or the environment. Nor does it relieve the operator of its responsibility for compliance with any other federal, state, or local laws and/or regulations.

Approval: FEB 01 2005 PETROLEUM ENGINEER

Printed Name/Title \_\_\_\_\_

Signature Paul J. Kump

