

DISTRICT I
P.O. Box 1980, Hobbs, NM 88241-1980

State of New Mexico

Energy, Minerals and Natural Resources Department

Form C-102

Revised February 10, 1994

Submit to Appropriate District Office

State Lease - 4 Copies

Fee Lease - 3 Copies

DISTRICT II
P.O. Drawer DD, Artesia, NM 88211-0719

OIL CONSERVATION DIVISION

P.O. Box 2088

Santa Fe, New Mexico 87504-2088

DISTRICT III
1000 Rio Brazos Rd., Aztec, NM 87410

DISTRICT IV
P.O. BOX 2088, SANTA FE, N.M. 87504-2088

WELL LOCATION AND ACREAGE DEDICATION PLAT

☐ AMENDED REPORT

API Number 30-025-36346	Pool Code 49090	Pool Name Monument Tubb
Property Code 5887	Property Name ORCUTT	Well Number 3
OGRID No. 013300	Operator Name LEWIS B. BURLESON INC.	Elevation 3606'

Surface Location

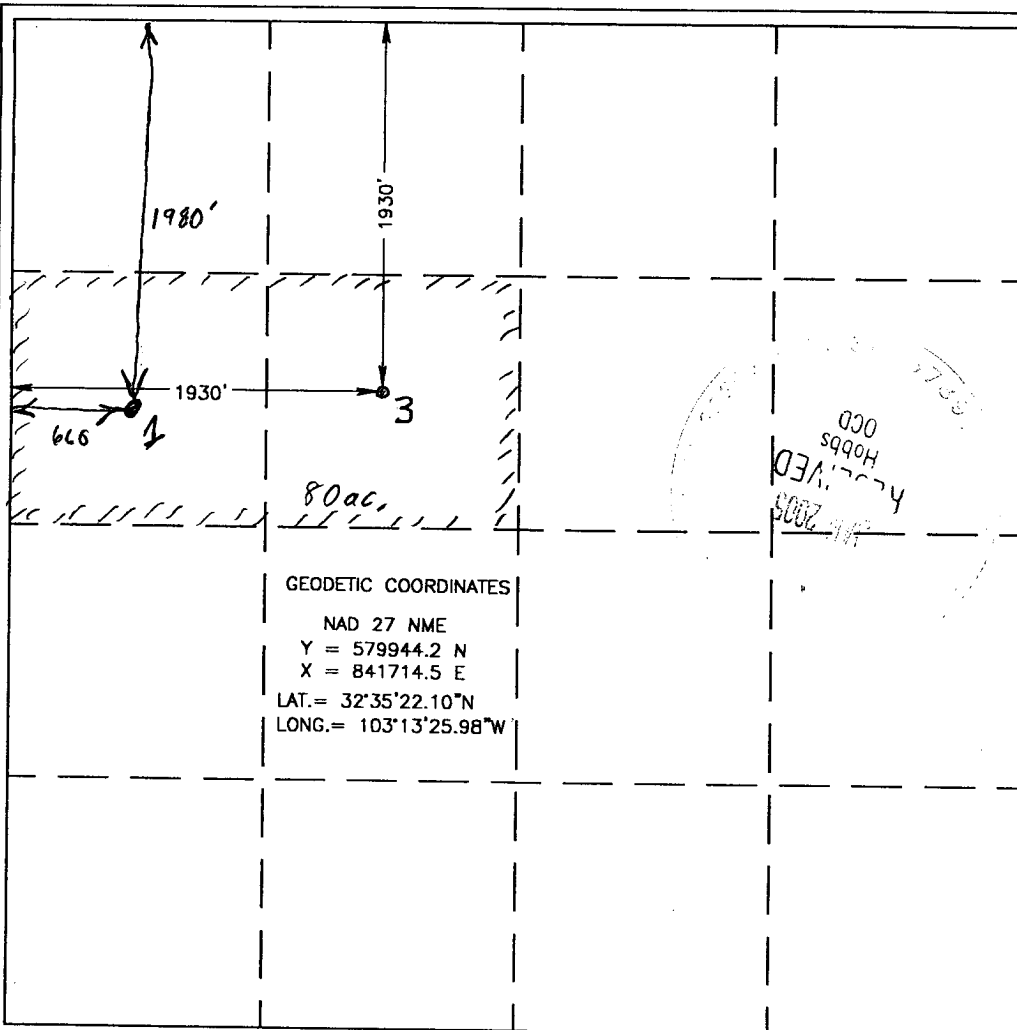
UL or lot No. F	Section 11	Township 20-S	Range 37-E	Lot Idn	Feet from the 1930'	North/South line NORTH	Feet from the 1930'	East/West line WEST	County LEA
--------------------	---------------	------------------	---------------	---------	------------------------	---------------------------	------------------------	------------------------	---------------

Bottom Hole Location If Different From Surface

UL or lot No.	Section	Township	Range	Lot Idn	Feet from the	North/South line	Feet from the	East/West line	County
---------------	---------	----------	-------	---------	---------------	------------------	---------------	----------------	--------

Dedicated Acres	Joint or Infill	Consolidation Code	Order No.
-----------------	-----------------	--------------------	-----------

NO ALLOWABLE WILL BE ASSIGNED TO THIS COMPLETION UNTIL ALL INTERESTS HAVE BEEN CONSOLIDATED
OR A NON-STANDARD UNIT HAS BEEN APPROVED BY THE DIVISION



OPERATOR CERTIFICATION	
I hereby certify the the information contained herein is true and complete to the best of my knowledge and belief.	
Signature	
Steven L. Burleson	
Printed Name	
Vice-President	
Title	
1/20/2005	
Date	
SURVEYOR CERTIFICATION	
I hereby certify that the well location shown on this plat was plotted from field notes of actual surveys made by me or under my supervision, and that the same is true and correct to the best of my belief.	
July 03, 2003	
Date Surveyed	
Signature & Seal of Professional Surveyor	
03.11.0687	
Certificate No. RONALD J. EIDSON 3239	
GARY EIDSON 12641	