

Re-submittal

Form 3160-3
(August 1999)

OCD-HOBBS

FORM APPROVED
OMB No. 1004-0136
Expires November 30, 2000



UNITED STATES
DEPARTMENT OF THE INTERIOR
BUREAU OF LAND MANAGEMENT

E-05-43

APPLICATION FOR PERMIT TO DRILL OR REENTER

474

5. Lease Serial No.
NMLC061154

6. If Indian, Allottee or Tribe Name

7. If Unit or CA Agreement, Name and No.

8. Lease Name and Well No.
BASSETT BIRNEY 2 32772

9. API Well No.
30-025-37167 30-025-36545-00 X4

10. Field and Pool, or Exploratory
MALJAMAR GRAYBURG SA
43329

11. Sec., T., R., M., or Blk. and Survey or Area
Sec 5 T18S R32E Mer NMP
SME: BLM

12. County or Parish
LEA

13. State
NM

17. Spacing Unit dedicated to this well
40.00

20. BLM/BIA Bond No. on file

23. Estimated duration
12 DAYS

24. Attachments
Revised Controlled Water Basin

1a. Type of Work: ☒ DRILL ☐ REENTER

1b. Type of Well: ☒ Oil Well ☐ Gas Well ☐ Other ☒ Single Zone ☐ Multiple Zone

2. Name of Operator
MACK ENERGY CORPORATION 13837
Contact: ROBERT C CHASE
E-Mail: jerrys@mackenergycorp.com

3a. Address
P O BOX 960
ARTESIA, NM 88211-0960

3b. Phone No. (include area code)
Ph: 505-748-1288

4. Location of Well (Report location clearly and in accordance with any State requirements. *)

At surface NWNW Lot 4 330FNL 990FWL

At proposed prod. zone

W/D

14. Distance in miles and direction from nearest town or post office*
8 MILES SOUTHWEST OF MALJAMAR

15. Distance from proposed location to nearest property or lease line, ft. (Also to nearest drig. unit line, if any)
330

16. No. of Acres in Lease

18. Distance from proposed location to nearest well, drilling, completed, applied for, on this lease, ft.
660

19. Proposed Depth

5000 MD

21. Elevations (Show whether DF, KB, RT, GL, etc.)
3854 GL

22. Approximate date work will start
04/01/2005

The following, completed in accordance with the requirements of Onshore Oil and Gas Order No. 1, shall be attached to this form:

- Well plat certified by a registered surveyor.
- A Drilling Plan.
- A Surface Use Plan (if the location is on National Forest System Lands, the SUPO shall be filed with the appropriate Forest Service Office).
- Bond to cover the operations unless covered by an existing bond on file (see item 20 above).
- Operator certification
- Such other site specific information and/or plans as may be required by the authorized officer.

25. Signature
(Electronic Submission)

Name (Printed/Typed)
JERRY W SHERRELL Ph: 505-748-1288

Date
02/24/2005

Title
PRODUCTION CLERK

Approved by (Signature)
/s/ Tony J. Herrell

Name (Printed/Typed)
/s/ Tony J. Herrell

Date
MAR 28 2005

Title
FIELD MANAGER

Office
CARLSBAD FIELD OFFICE

Application approval does not warrant or certify the applicant holds legal or equitable title to those rights in the subject lease which would entitle the applicant to conduct operations thereon.
Conditions of approval, if any, are attached.

APPROVAL FOR 1 YEAR

Title 18 U.S.C. Section 1001 and Title 43 U.S.C. Section 1212, make it a crime for any person knowingly and willfully to make to any department or agency of the United States any false, fictitious or fraudulent statements or representations as to any matter within its jurisdiction.

Electronic Submission #54453 verified by the BLM Well Information System
For MACK ENERGY CORPORATION, sent to the Hobbs
Committed to AFMSS for processing by LINDA ASKWIG on 02/25/2005 (05LA0137AE)

APPROVAL SUBJECT TO
GENERAL REQUIREMENTS AND
SPECIAL STIPULATIONS
ATTACHED

** BLM REVISED ** BLM REVISED ** BLM REVISED ** BLM REVISED ** BLM REVISED **

DISTRICT I
P.O. Box 1980, Hobbs, NM 88241-1980

DISTRICT II
P.O. Drawer DD, Artesia, NM 88211-0718

DISTRICT III
1000 Rio Brazos Rd., Aztec, NM 87410

DISTRICT IV
P.O. BOX 2088, SANTA FE, N.M. 87504-2088

State of New Mexico
Energy, Minerals and Natural Resources Department

Form C-102
Revised February 10, 1994
Submit to Appropriate District Office
State Lease - 4 Copies
Fee Lease - 3 Copies

OIL CONSERVATION DIVISION

P.O. Box 2088

Santa Fe, New Mexico 87504-2088

WELL LOCATION AND ACREAGE DEDICATION PLAT

☐ AMENDED REPORT

API Number 30-025-37167	Pool Code 43329	Pool Name Maljamar;Grayburg-San Andres
Property Code 32772	Property Name BASSETT BIRNEY	Well Number 2
OGRID No. 013837	Operator Name MACK ENERGY CORPORATION	Elevation 3854'

Surface Location

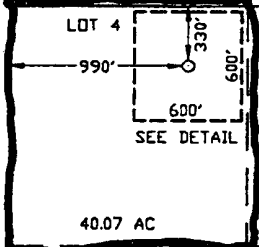
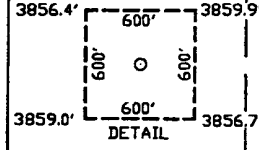
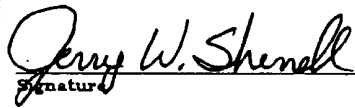
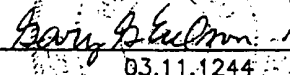
UL or lot No. 4/D	Section 5	Township 18-S	Range 32-E	Lot Idn	Feet from the 330	North/South line NORTH	Feet from the 990	East/West line WEST	County LEA
-----------------------------	---------------------	-------------------------	----------------------	---------	-----------------------------	----------------------------------	-----------------------------	-------------------------------	----------------------

Bottom Hole Location If Different From Surface

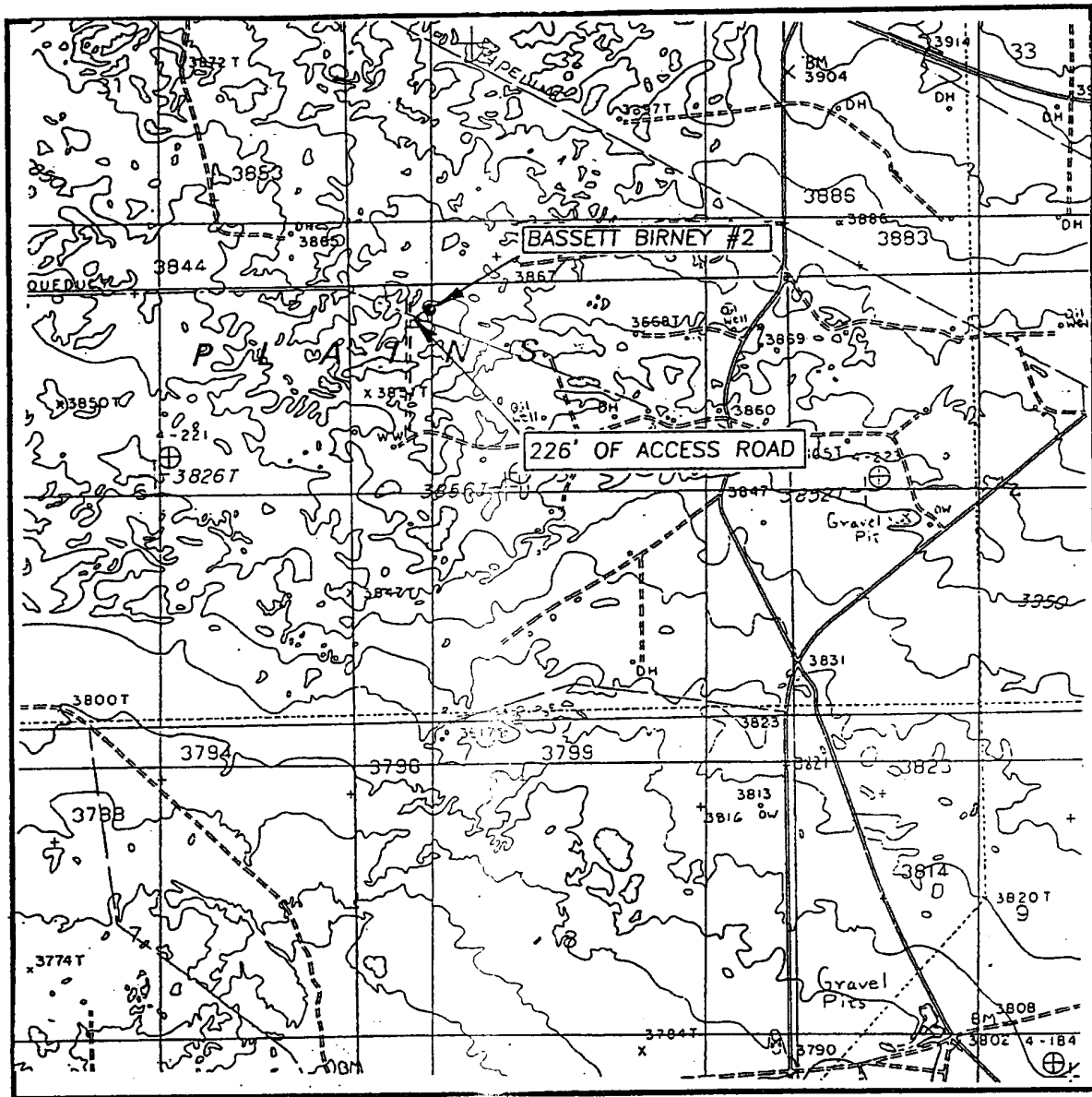
UL or lot No.	Section	Township	Range	Lot Idn	Feet from the	North/South line	Feet from the	East/West line	County
---------------	---------	----------	-------	---------	---------------	------------------	---------------	----------------	--------

Dedicated Acres 40.07	Joint or Infill	Consolidation Code	Order No.
---------------------------------	-----------------	--------------------	-----------

NO ALLOWABLE WILL BE ASSIGNED TO THIS COMPLETION UNTIL ALL INTERESTS HAVE BEEN CONSOLIDATED
OR A NON-STANDARD UNIT HAS BEEN APPROVED BY THE DIVISION

	LOT 3 40.08 AC	LOT 2 40.10 AC	LOT 1 40.11 AC
	GEODETTIC COORDINATES NAD 27 NME Y = 648933.3 N X = 665924.6 E LAT. 32°46'58.24"N LONG. 103°47'36.42"W		
<p>OPERATOR CERTIFICATION</p> <p>I hereby certify the the information contained herein is true and complete to the best of my knowledge and belief.</p> <p> Signature</p> <p>Jerry W. Sherrell Printed Name</p> <p>Production Clerk Title</p> <p>12/16/2003 Date</p> <p>SURVEYOR CERTIFICATION</p> <p>I hereby certify that the well location shown on this plat was plotted from field notes of actual surveys made by me or under my supervision, and that the same is true and correct to the best of my belief.</p> <p>November 11, 2003 Date Surveyed</p> <p> Signature & Seal of Professional Surveyor</p> <p>03.11.1244 Certificate No.</p> <p>GARY EASON 12641</p>			

LOCATION VERIFICATION MAP



SCALE: 1" = 2000'

CONTOUR INTERVAL: 10'

MALJAMAR, N.M.

SEC. 5 TWP. 18-S RGE. 32-E

SURVEY N.M.P.M.

COUNTY LEA

DESCRIPTION 330' FNL & 990' FWL

ELEVATION 3854'

OPERATOR MACK ENERGY CORPORATION

LEASE BASSETT BIRNEY

U.S.G.S. TOPOGRAPHIC MAP

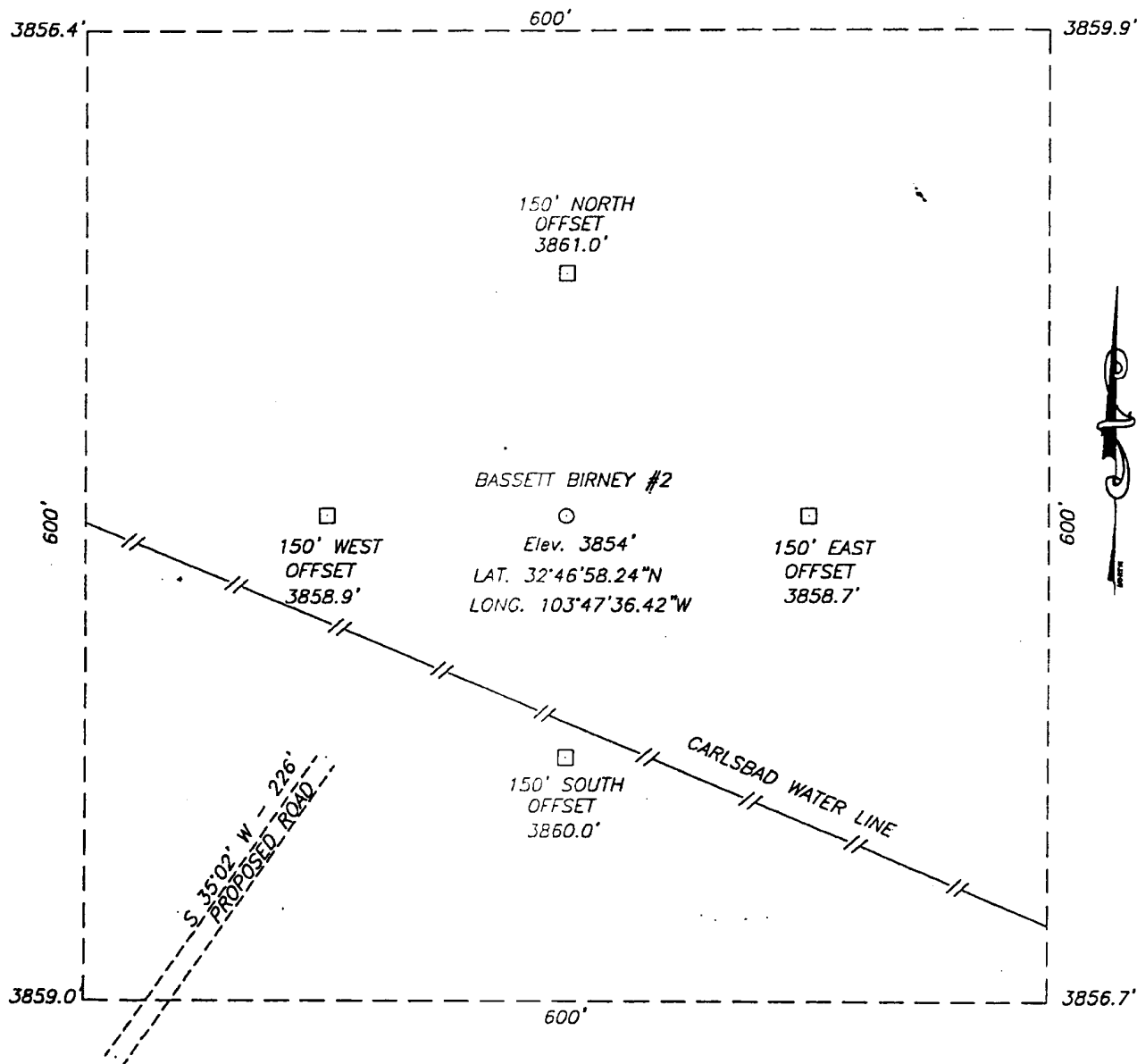
MALJAMAR, N.M.

JOHN WEST SURVEYING
HOBBS, NEW MEXICO
(505) 393-3117

SECTION 5, TOWNSHIP 18 SOUTH, RANGE 32 EAST, N.M.P.M.,

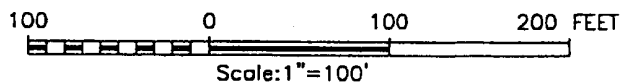
EDDY COUNTY,

NEW MEXICO.



DIRECTION TO LOCATION:

FROM THE INTERSECTION OF STATE HIGHWAY #529 AND COUNTY ROAD 33 GO SOUTH 1.8 MILES. TURN RIGHT ONTO CALICHE ROAD AND GO 500' NORTHWEST. TURN LEFT AND GO 3/10 OF A MILE (ROAD BENDS THROUGH WELL PAD). AND GO WEST 6/10 OF A MILE TURN RIGHT AND GO 400' TO BASSETT BIRNEY #1. LOCATION IS 450' NORTHEAST.



MACK ENERGY CORPORATION

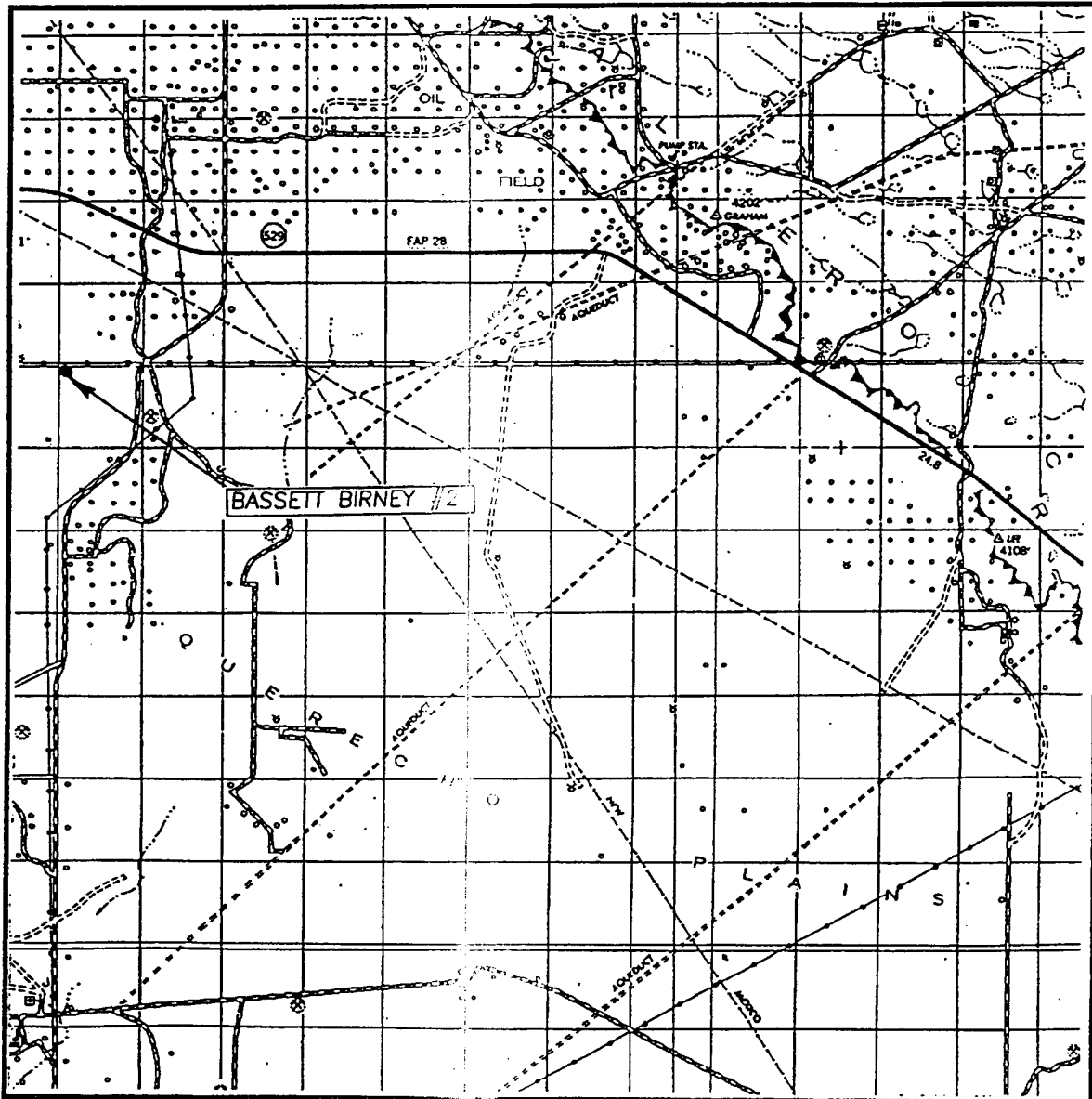
THE BASSETT BIRNEY #2 LOCATED
330' FROM THE SOUTH LINE AND 990' FROM THE WEST LINE
OF SECTION 5, TOWNSHIP 18 SOUTH, RANGE 32 EAST,
LEA COUNTY, NEW MEXICO

Survey Date: 11/10/03	Sheet 1 of 1 Sheets
W.O. Number: 03.11.1244	DRAWN BY: A.W.B
Date: 11/13/03	DISK: CD#10
MACK #1244	Scale: 1"=100'

JOHN WEST SURVEYING COMPANY

412 N. DAL PASO - HOBBS, NEW MEXICO - 505-393-3117

VICINITY MAP



SCALE: 1" = 2 MILES

SEC. 5 TWP. 18-S RGE. 32-E

SURVEY N.M.P.M.

COUNTY LEA

DESCRIPTION 330' FNL & 990' FWL

ELEVATION 3854'

OPERATOR MACK ENERGY CORPORATION

LEASE BASSETT BIRNEY

JOHN WEST SURVEYING
HOBBS, NEW MEXICO
(505) 393-3117

United State Department of the Interior

BUREAU OF LAND MANAGEMENT

Roswell Resource Area

P.O. Drawer 1857

Roswell, New Mexico 88202-1857

Statement Accepting Responsibility for Operations

Operator name: Mack Energy Corporation
Street or box : P.O. Box 960
City, State : Artesia, NM
Zip Code, : 88211-0960

The undersigned accepts all applicable terms, conditions, stipulations, and restrictions concerning operations conducted on the leased land or portion thereof, as described below:

Lease No.: NMLC-061154 Bassett Birney #2

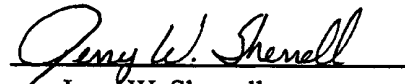
Legal Description of land: Sec. 5 T18S R32E NW/4 NW/4

Formation(s) (if applicable): Maljamar GB SA

Bond Coverage: (State if individually bonded or another's bond)
Individually Bonded

BLM Bond File No.: 58 59 88

Authorized Signature:


Jerry W. Sherrell

Title: Production Clerk

Date: 2/24/2005

Attached to Form 3160-3
Mack Energy Corporation
Bassett Birney #2
330 FNL & 990 FWL
NW/4 SW/4, Sec 5 T18S R32E
Lea County, NM

DRILLING PROGRAM

1. Geologic Name of Surface Formation

Quaternary

2. Estimated Tops of Important Geologic Markers:

Quaternary	Surface
Top of Salt	800'
Base of Salt	1800'
Yates	2080'
Queen	3010'
San Andres	3800'

3. Estimated Depths of Anticipated Fresh Water, Oil and Gas:

Water Sand	150'	Fresh Water
Grayburg	3500'	Oil/Gas
San Andres	3800'	Oil/Gas

No other formations are expected to give up oil, gas or fresh water in measurable quantities. Setting 13 3/8" casing to 300' and circulating cement back to surface will protect the surface fresh water sand. Salt Section will be protected by setting 8 5/8" casing to 2300' and circulating cement back to surface. Any shallower zones above TD, which contain commercial quantities of oil and/or gas, will have cement circulated across them by cementing 5 1/2" production casing, which will be run at TD.

4. Casing Program:

Hole Size	Interval	OD Casing	Weight, Grade, Jt, Cond., Type
17 1/2"	0-300'	13 3/8"	48#, J-55, ST&C, New, R-3
12 1/4"	0-2300'	8 5/8"	32#, J-55, ST&C, New, R-3
7 7/8"	0-TD	5 1/2"	17#, J-55, LT&C, New, R-3

Attached to Form 3160-3
Mack Energy Corporation
Bassett Birney #2
330 FNL & 990 FWL
NW/4 SW/4, Sec 5 T18S R32E
Lea County, NM

5. Cement Program:

13 3/8" Surface Casing: Circulate to Surface with Class C w/2% CaCl₂.

8 5/8 Intermediate Casing: Circulate to Surface with Class C W/2% CaCl₂.

5 1/2" Production Casing: Cement Casing with Class C w/6# Salt & 2/10 of 1% CFR-3 per sack. We will run a hole caliper and run sufficient cement to circulate to surface.

6. Minimum Specifications for Pressure Control:

The blowout preventer equipment (BOP) shown in Exhibit #9 will consist of a double ram-type (The blowout preventer equipment (BOP) shown in Exhibit #9 will consist of a double ram-type (2000 psi WP) preventer. This unit will be hydraulically operated and the ram type preventer will be equipped with blind rams on top of 4 1/2" drill pipe rams on bottom. The BOP will be nipped up on the 13 3/8" surface casing and tested to 2000# by a 3rd party. The BOP will then be nipped up on the 8 5/8" intermediate casing and tested by a 3rd party to 2000 psi and used continuously until TD is reached. All BOP's and accessory equipment will be tested to 2000 psi before drilling out of intermediate casing. Pipe rams will be operationally checked each 24-hour period. Blind rams will be operationally checked on each trip out of the hole. These checks will be noted on the daily tour sheets. Other accessories to the BOP equipment (Exhibit #10) will include a Kelly cock and floor safety valve and choke lines and choke manifold (Exhibit #11) with 2000 psi WP rating.

7. Types and Characteristics of the Proposed Mud System:

The well will be drilled to TD with a combination of brine, cut brine and polymer mud system. The applicable depths and properties of this system are as follows:

DEPTH	TYPE	WEIGHT	VISCOSITY	WATERLOSS
0-1035'	Fresh Water	8.5	28	N.C.
1035-2300'	Brine	10	30	N.C.
2300'-TD	Cut Brine	9.1	29	N.C.

Sufficient mud materials to maintain mud properties and meet minimum lost circulation and weight increase requirements will be kept at the well site at all times.

8. Auxiliary Well Control and Monitoring Equipment:

- A. Kelly cock will be kept in the drill string at all times.
- B. A full opening drill pipe-stabbing valve with proper drill pipe connections will be on the rig floor at all times.

Attached to Form 3160-3
Mack Energy Corporation
Bassett Birney #2
330 FNL & 990 FWL
NW/4 SW/4, Sec 5 T18S R32E
Lea County, NM

9. Logging, Testing and Coring Program:

- A. The electric logging program will consist of GR-Dual Laterolog, Spectral Density, Dual Spaced Neutron, CSNG Log and will be ran from T.D. to 8 5/8 casing shoe.
- B. Drill Stem test is not anticipated.
- C. No conventional coring is anticipated.
- D. Further testing procedures will be determined after the 5 1/2" production casing has been cemented at TD based on drill shows and log evaluation.

10. Abnormal Conditions, Pressures, Temperatures and Potential Hazards:

No abnormal pressures or temperatures are anticipated. The estimated bottom hole at TD is 110 degrees and estimated maximum bottom hole pressure is 2300 psig. Low levels of Hydrogen sulfide have been monitors in producing wells in the area, so H2S may be present while drilling of the well a plan is attached to the Drilling program. No major loss of circulation zones has been reported in offsetting wells.

11. Anticipated Starting Date and Duration of Operations:

Road and location work will not begin until approval has been received from the BLM. The anticipated spud date is April 1, 2005. Once commenced, the drilling operation should be finished in approximately 10 days. If the well is productive, an additional 30 days will be required for completion and testing before a decision is made to install permanent facilities.

SURFACE USE AND OPERATING PLAN

Attached to Form 3160-3
Mack Energy Corporation
Bassett Birney #2
330 FNL & 990 FWL
NW/4 SW/4, Sec 5 T18S R32E
Lea County, NM

2. Proposed Access Road:

Exhibit #3 shows 226' of new access road to be constructed. The road will be constructed as follows:

- A. The Maximum width of the running surface will be 14'. The road will be crowned and ditched and constructed of 6" rolled and compacted caliche. Ditches will be at 3:1 slope and 4 feet wide. Water will be diverted where necessary to avoid ponding, prevent erosion, maintain good drainage, and to be consistent with local drainage patterns.
- B. The average grade will be less than 1%.
- C. No turnouts are planned.
- D. No culverts, cattle guard, gates, low water crossings or fence cuts are necessary.
- E. Surfacing material will consist of native caliche. Caliche will be obtained from the nearest BLM approved caliche pit or reserve pit area.
- F. The proposed access road as shown in Exhibit #3 has been centerline flagged by John West Engineering, Hobbs, New Mexico.

3. Location of Existing Wells & Proposed flow lines for New Wells:

Exhibit #4 shows all existing wells within a one-mile radius of this well. As shown on this plat there are numerous wells producing Grayburg/San Andres formations. Proposed flow lines will follow an archaeologically approved route to the Bassett Birney tank battery.

4. Location of Existing and/or Proposed Facilities:

- A. Mack Energy Corporation does operate a production facility on this lease.
- B. If the well is productive, contemplated facilities will be as follows:
 - 1) Grayburg/San Andres Completion: Will be sent to the Bassett Birney tank battery. The Facility is shown in Exhibit #5.
 - 2) The tank battery and facilities including all flow lines and piping will be installed according to API specifications.
 - 3) Any additional caliche will be obtained from a BLM approved caliche pit. Any additional construction materials will be purchased from contractors.

Attached to Form 3160-3
Mack Energy Corporation
Bassett Birney #2
330 FNL & 990 FWL
NW/4 SW/4, Sec 5 T18S R32E
Lea County, NM

6. Source of Construction Materials:

All caliche required for construction of the drill pad and proposed new access road (approximately 2500 cubic yards) will be obtained from a BLM approved caliche pit or the reserve pit.

7. Methods of Handling Water Disposal:

- A. Drill cuttings not retained for evaluation purposes will be disposed into the reserve pit.
- B. Drilling fluids will be contained in a lined working pit. The reserve pit will contain any excess drilling fluid or flow from the well during drilling, cementing and completion operations. The reserve pit will be an earthen pit, approximately 125' X 125' X 10' deep with a dividing wall dividing it into two horseshoe style pits and fenced on three sides prior to drilling. It will be fenced on the fourth side immediately following rig removal. The reserve pit will be lined 125' X 125' X 10'. The reserve pit will be lined (12-mil thickness) to minimize loss of drilling fluids and saturation of the ground with brine water.
- C. Water produced from the well during completion may be disposed into the reserve pit or a steel tank (depending on the rates). After the well is permanently placed on production, produced water will be collected in tanks (fiberglass) until pumped to an approved disposal system; produced oil will be collected in steel tanks until sold.
- D. Garbage and trash produced during drilling or completion operations will be collected in a trash bin and hauled to an approved landfill. All water and fluids will be disposed of into the reserve pit. Salts and other chemicals produced during drilling or testing will be disposed into the reserve pit. No toxic waste or hazardous chemicals will be produced by this operation.
- E. After the rig is moved out and the well is either completed or abandoned, all waste materials will be cleaned up within 30 days. The reserve pit will be completely fenced and kept closed until it has dried. When the reserve pit is dry enough to breakout and backfill and reseeded as per BLM specifications as weather permits. In the event of a dry hole only a dry hole marker will remain.

8. Ancillary Facilities:

No airstrip, campsite or other facilities will be built as a result of the operation on this well.

Attached to Form 3160-3
Mack Energy Corporation
Bassett Birney #2
330 FNL & 990 FWL
NW/4 SW/4, Sec 5 T18S R32E
Lea County, NM

9. Well Site Layout:

- A. The drill pad layout, with elevations staked by John West Engineering, is shown in Exhibit #6. Dimensions of the pad and pits are shown. Topsoil, if available, will be stockpiled per BLM specifications. Because the pad is almost level no major cuts will be required.
- B. Diagram below shows the proposed orientation of reserve pit, working pit. There is a possibility that the pits will be moved around depending on Caliche in the area. No permanent living facilities are planned, but a temporary foreman/toolpusher's trailer will be on location during the drilling operations.
- C. The reserve pit will be lined with high quality plastic sheeting (12 mil thickness).

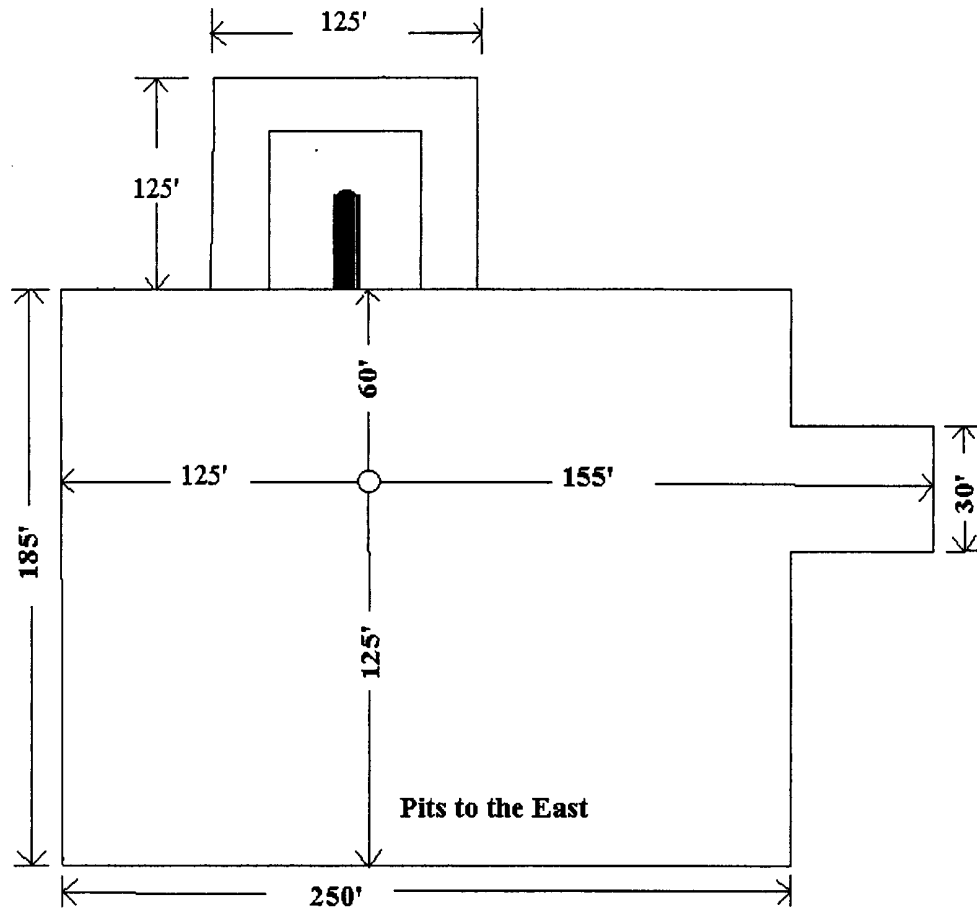


Exhibit #6

Attached to Form 3160-3
Mack Energy Corporation
Bassett Birney #2
330 FNL & 990 FWL
NW/4 SW/4, Sec 5 T18S R32E
Lea County, NM

10. Plans for Restoration of the Surface:

- A. Upon completion of the proposed operations, The pit area, after allowing drying, will be broken out and leveled. The original topsoil will be returned to the pit area, which will be leveled and contoured to as nearly the original topography as possible.
- B. The disturbed area will be revegetated by reseeding during the proper growing season with a seed mixture of native grasses as recommended by the BLM.
- C. Three sides of the reserve pit will be fenced prior to and during drilling operations. At the time that the rig is removed, the reserve pit will be fenced on the rig (fourth) side to prevent livestock from being entrapped. The fencing will remain in place until the pit area is cleaned up and leveled. No oil will be left on the surface of the fluid in the pit.
- D. Upon completion of proposed operations, if the well is completed, the reserve pit area will be treated as outlined above within the same prescribed time. Any additional caliche required for facilities will be obtained from a BLM approved caliche pit. Topsoil removed from the drill site will be used to recontour the pit area to its original natural level and reseeded as per BLM specifications.

11. Surface Ownership:

The well site and lease is located entirely on Federal surface. We have notified the surface lessee of the impending operations. According to BLM the leasee is Williams & Son Cattle Co., P.O. Box 30 Maljamar, NM 88264.

12. Other Information:

- A. The area around the well site is grassland and the topsoil is sandy. The vegetation is native scrub grass with sagebrush.
- B. There is no permanent or live water in the immediate area.
- C. A Cultural Resources Examination has been requested and will be forwarded to your office in the near future.

13. Lessee's and Operator's Representative:

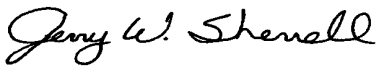
The Mack Energy Corporation representative responsible for assuring compliance with the surface use plan is as follows:

Jerry W. Sherrell
Mack Energy Corporation
P.O. Box 960
Artesia, NM 88211-0960
Phone (505) 748-1288 (office)

Attached to Form 3160-3
Mack Energy Corporation
Bassett Birney #2
330 FNL & 990 FWL
NW/4 SW/4, Sec 5 T18S R32E
Lea County, NM

CERTIFICATION

I hereby certify that I, or person under my direct supervision, have inspected the proposed drill site and access route; that I am familiar with the conditions which currently exist; that the statements made in this plan are to the best of my knowledge, true and correct; and the work associated with the operations proposed herein will be performed by Mack Energy Corporation and its contractors and subcontractors in conformity with this plan and the terms and conditions which it is approved. This statement is subject to the provisions of 18 U.S.C. 1001 for the filing of a false statement.

Date: 2/23/2005 Signed: 
Jerry W. Sherrell

Mack Energy Corporation

Hydrogen Sulfide Drilling Operation Plan

I. HYDROGEN SULFIDE TRAINING

All personnel, whether regularly assigned, contracted, or employed on an unscheduled basis, will receive training from a qualified instructor in the following areas prior to commencing drilling operations on this well:

1. The hazards and characteristics of hydrogen sulfide (H₂S)
2. The proper use and maintenance of personal protective equipment and life support systems.
3. The proper use of H₂S detectors, alarms, warning systems, briefing areas, evacuation procedures, and prevailing winds.
4. The proper techniques for first aid and rescue procedures.

In addition, supervisory personnel will be trained in the following areas:

1. The effects of H₂S on metal components. If high tensile tubular are to be used, personnel will be trained in their special maintenance requirements.
2. Corrective action and shut-in procedures when drilling or reworking a well and blowout prevention and well control procedures.
3. The contents and requirements of the H₂S Drilling Operations Plan and Public Protection Plan.

There will be an initial training session just prior to encountering a known or probable H₂S zone (within 3 days or 500 feet) and weekly H₂S and well control drills for all personnel in each crew. The initial training session shall include a review of the site specific H₂S Drilling Operations Plan and the Public Protection Plan. This plan shall be available at the well site. All personnel will be required to carry documentation that they have received the proper training. **The concentrations of H₂S of wells in this area from surface to TD are low enough that a contingency plan is not required.**

II. H2S SAFETY EQUIPMENT AND SYSTEMS

Note: All H2S safety equipment and systems will be installed, tested, and operational when drilling reaches a depth of 500 feet above, or three days prior to penetrating the first zone containing or reasonable expected to contain H2S.

1. Well Control Equipment:

- A. Flare line.
- B. Choke manifold.
- C. Blind rams and pipe rams to accommodate all pipe sizes with properly sized closing unit.
- D. Auxiliary equipment may include if applicable: annular preventer & rotating head.

2. Protective equipment for essential personnel:

- A. Mark II Survive air 30-minute units located in the doghouse and at briefing areas, as indicated on well site diagram.

3. H2S detection and monitoring equipment:

- A. 1 portable H2S monitors positioned on location for best coverage and response. These units have warning lights and audible sirens when H2S levels of 20 PPM are reached.

4. Visual warning systems:

- A. Wind direction indicators as shown on well site diagram (Exhibit #8).
- B. Caution/Danger signs (Exhibit #7) shall be posted on roads providing direct access to location. Signs will be painted a high visibility yellow with black lettering of sufficient size to be readable at a reasonable distance from the immediate location. Bilingual signs will be used, when appropriate. See example attached.

5. Mud program:

- A. The mud program has been designed to minimize the volume of H2S circulated to surface. Proper mud weight, safe drilling practices, and the use of H2S scavengers will minimize hazards when penetrating H2S bearing zones.

6. Metallurgy:

- A. All drill strings, casings, tubing, wellhead, blowout preventer, drilling spool, kill lines, choke manifold and lines, and valves shall be suitable for H₂S service.
- B. All elastomers used for packing and seals shall be H₂S trim.

7. Communication:

- A. Radio communications in company vehicles including cellular telephone and 2-way radio.
- B. Land line (telephone) communication at Office.

8. Well testing:

- A. Drill stem testing will be performed with a minimum number of personnel in the immediate vicinity, which are necessary to safely and adequately conduct the test. The drill stem testing will be conducted during daylight hours and formation fluids will not be flowed to the surface. All drill-stem-testing operations conducted in an H₂S environment will use the closed chamber method of testing.
- B. There will be no drill stem testing.

EXHIBIT #7

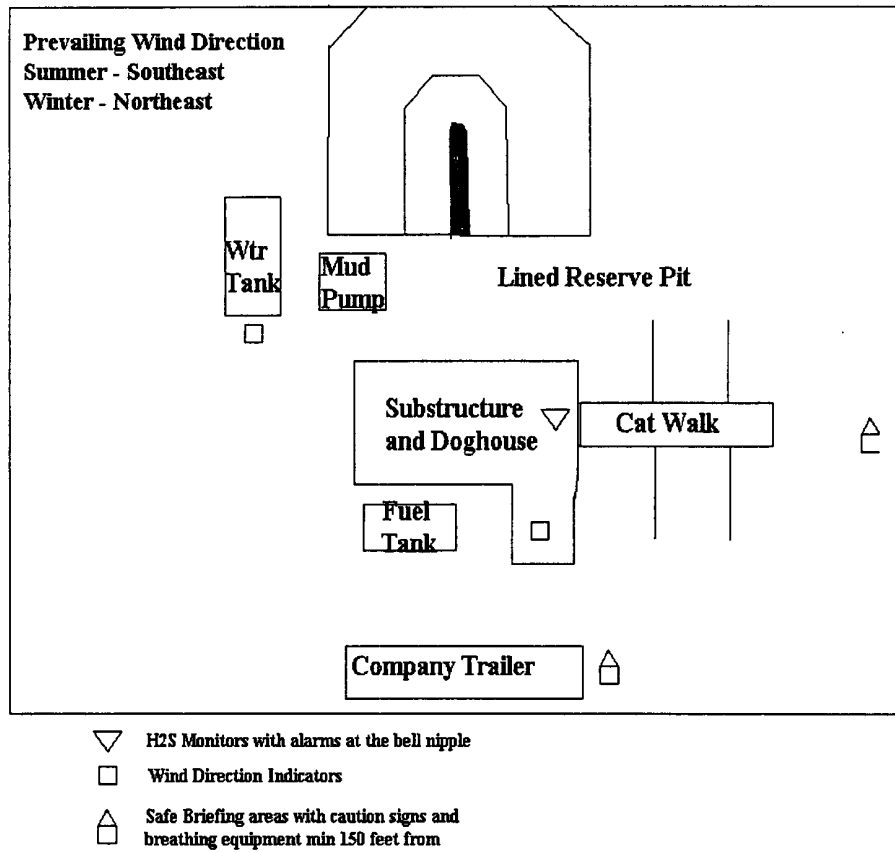
WARNING
YOU ARE ENTERING AN H₂S
AUTHORIZED PERSONNEL ONLY

- 1. BEARDS OR CONTACT LENSES NOT ALLOWED**
- 2. HARD HATS REQUIRED**
- 3. SMOKING IN DESIGNATED AREAS ONLY**
- 4. BE WIND CONSCIOUS AT ALL TIMES**
- 5. CHECK WITH MACK ENERGY FOREMAN AT OFFICE**

MACK ENERGY CORPORATION

1-505-748-1288

DRILLING LOCATION H2S SAFTY EQUIPMENT
Exhibit # 8

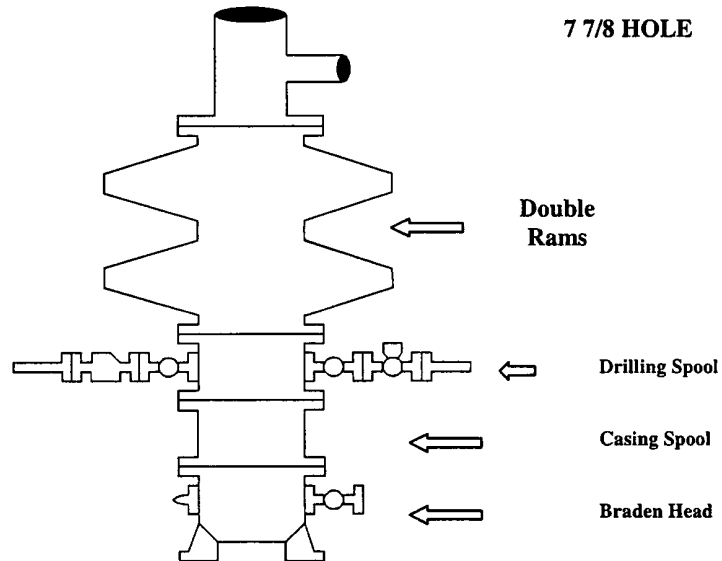


**Attachment to Exhibit #9
NOTES REGARDING THE BLOWOUT PREVENTERS
Bassett Birney #2
Lea County, New Mexico**

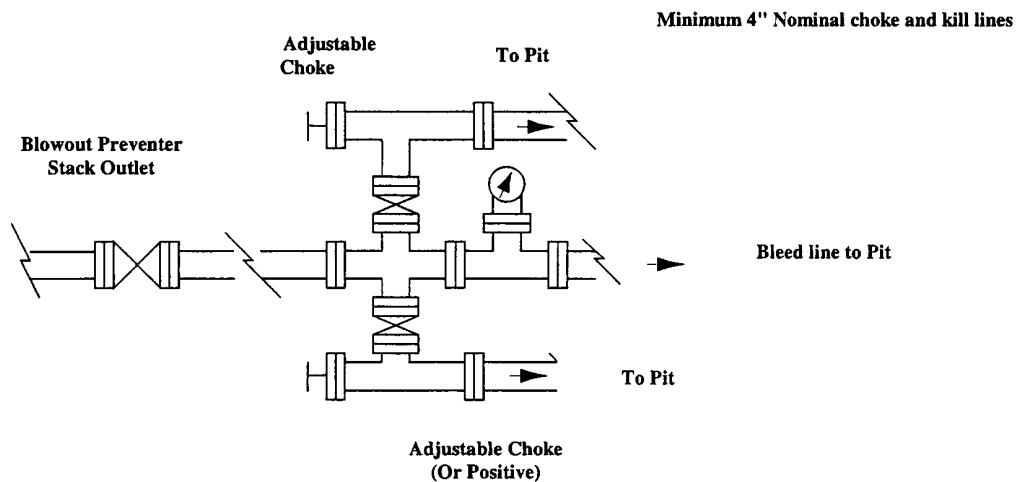
1. Drilling nipple to be so constructed that it can be removed without use of a welder through rotary table opening, with minimum I.D. equal to preventer bore.
2. Wear ring to be properly installed in head.
3. Blow out preventer and all fittings must be in good condition, 2000 psi WP minimum.
4. All fittings to be flanged.
5. Safety valve must be available on rig floor at all times with proper connections, valve to be full 2000 psi WP minimum.
6. All choke and fill lines to be securely anchored especially ends of choke lines.
7. Equipment through which bit must pass shall be at least as large as the diameter of the casing being drilled through.
8. Kelly cock on Kelly.
9. Extension wrenches and hands wheels to be properly installed.
10. Blow out preventer control to be located as close to driller's position as feasible.
11. Blow out preventer closing equipment to include minimum 40-gallon accumulator, two independent sources of pump power on each closing unit installation all API specifications.

Mack Energy Corporation

Exhibit #9 BOPE Schematic



Choke Manifold Requirement (2000 psi WP) No Annular Required



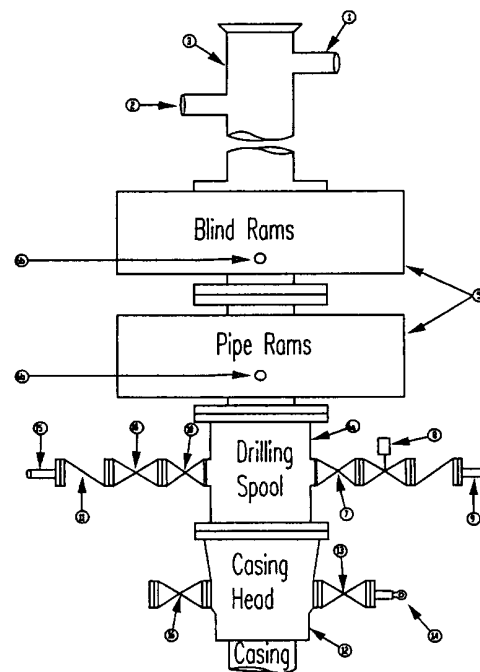
Mack Energy Corporation
Minimum Blowout Preventer Requirements
2000 psi Working Pressure
2 MWP
EXHIBIT #10

Stack Requirements

NO.	Items	Min. I.D.	Min. Nominal
1	Flowline		2"
2	Fill up line		2"
3	Drilling nipple		
4	Annular preventer		
5	Two single or one dual hydraulically operated rams		
6a	Drilling spool with 2" min. kill line and 3" min choke line outlets		2" Choke
6b	2" min. kill line and 3" min. choke line outlets in ram. (Alternate to 6a above)		
7	Valve Gate Plug	3 1/8	
8	Gate valve-power operated	3 1/8	
9	Line to choke manifold		3"
10	Valve Gate Plug	2 1/16	
11	Check valve	2 1/16	
12	Casing head		
13	Valve Gate Plug	1 13/16	
14	Pressure gauge with needle valve		
15	Kill line to rig mud pump manifold		2"

OPTIONAL

16	Flanged Valve	1 13/16	
----	---------------	---------	--



CONTRACTOR'S OPTION TO FURNISH:

1. All equipment and connections above bradenhead or casinghead. Working pressure of preventers to be 2000 psi minimum.
2. Automatic accumulator (80 gallon, minimum) capable of closing BOP in 30 seconds or less and, holding them closed against full rated working pressure.
3. BOP controls, to be located near drillers' position.
4. Kelly equipped with Kelly cock.
5. Inside blowout preventer or its equivalent on derrick floor at all times with proper threads to fit pipe being used.
6. Kelly saver-sub equipped with rubber casing protector at all times.
7. Plug type blowout preventer tester.
8. Extra set pipe rams to fit drill pipe in use on location at all times.
9. Type RX ring gaskets in place of Type R.

MEC TO FURNISH:

1. Bradenhead or casing head and side valves.
2. Wear bushing. If required.
- 3.

GENERAL NOTES:

1. Deviations from this drawing may be made only with the express permission of MEC's Drilling Manager.
2. All connections, valves, fittings, piping, etc., subject to well or pump pressure must be flanged (suitable clamp connections acceptable) and have minimum working pressure equal to rated working pressure of preventers up through choke valves must be full opening and suitable for high pressure mud service.
3. Controls to be of standard design and each marked, showing opening and closing position.
4. Chokes will be positioned so as not to hamper or delay changing of choke beans. Replaceable parts for adjustable choke, or bean

5. sizes, retainers, and choke wrenches to be conveniently located for immediate use.
6. All valves to be equipped with hand-wheels or handles ready for immediate use.
7. Choke lines must be suitably anchored.
8. Handwheels and extensions to be connected and ready for use.
9. Valves adjacent to drilling spool to be kept open. Use outside valves except for emergency.
10. All seamless steel control piping (2000 psi working pressure) to have flexible joints to avoid stress. Hoses will be permitted.
11. Casinghead connections shall not be used except in case of emergency.
12. Do not use kill line for routine fill up operations.

Mack Energy Corporation

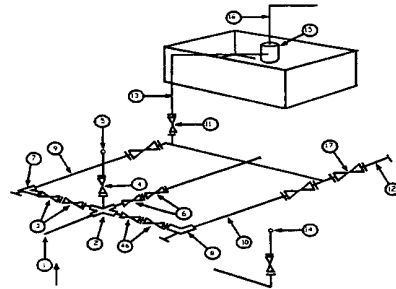
Exhibit #11

MINIMUM CHOKE MANIFOLD

3,000, 5,000, and 10,000 PSI Working Pressure

2 M will be used or greater

3 MWP - 5 MWP - 10 MWP



Mud Pit

Reserve Pit

* Location of separator optional

Below Substructure

Minimum requirements

No.		3,000 MWP			5,000 MWP			10,000 MWP		
		I.D.	NOMINAL	Rating	I.D.	Nominal	Rating	I.D.	Nominal	Rating
1	Line from drilling Spool		3"	3,000		3"	5,000		3"	10,000
2	Cross 3" x 3" x 3" x 2"			3,000			5,000			
2	Cross 3" x 3" x 3" x 2"									10,000
3	Valve Gate Plug	3 1/8		3,000	3 1/8		5,000	3 1/8		10,000
4	Valve Gate Plug	1 13/16		3,000	1 13/16		5,000	1 13/16		10,000
4a	Valves (1)	2 1/16		3,000	2 1/16		5,000	2 1/16		10,000
5	Pressure Gauge			3,000			5,000			10,000
6	Valve Gate Plug	3 1/8		3,000	3 1/8		5,000	3 1/8		10,000
7	Adjustable Choke (3)	2"		3,000	2"		5,000	2"		10,000
8	Adjustable Choke	1"		3,000	1"		5,000	2"		10,000
9	Line		3"	3,000		3"	5,000		3"	10,000
10	Line		2"	3,000		2"	5,000		2"	10,000
11	Valve Gate Plug	3 1/8		3,000	3 1/8		5,000	3 1/8		10,000
12	Line		3"	1,000		3"	1,000		3"	2,000
13	Line		3"	1,000		3"	1,000		3"	2,000
14	Remote reading compound Standpipe pressure gauge			3,000			5,000			10,000
15	Gas Separator		2' x 5'			2' x 5'			2' x 5'	
16	Line		4"	1,000		4"	1,000		4"	2,000
17	Valve Gate Plug	3 1/8		3,000	3 1/8		5,000	3 1/8		10,000

- (1) Only one required in Class 3M
- (2) Gate valves only shall be used for Class 10 M
- (3) Remote operated hydraulic choke required on 5,000 psi and 10,000 psi for drilling.

EQUIPMENT SPECIFICATIONS AND INSTALLATION INSTRUCTION

1. All connections in choke manifold shall be welded, studded, flanged or Cameron clamp of comparable rating.
2. All flanges shall be API 6B or 6BX and ring gaskets shall be API RX or BX. Use only BX for 10 MWP.
3. All lines shall be securely anchored.
4. Chokes shall be equipped with tungsten carbide seats and needles, and replacements shall be available.
5. Choke manifold pressure and standpipe pressure gauges shall be available at the choke manifold to assist in regulating chokes. As an alternate with automatic chokes, a choke manifold pressure gauge shall be located on the rig floor in conjunction with the standpipe pressure gauge.
6. Line from drilling spool to choke manifold should be as straight as possible. Lines downstream from chokes shall make turns by large bends or 90 degree bends using bull plugged tees.

District I

1625 N. French Dr., Hobbs, NM 88240

District II

1301 W. Grand Avenue, Artesia, NM 88210

District III

1000 Rio Brazos Road, Aztec, NM 87410

District IV

1220 S. St. Francis Dr., Santa Fe, NM 87505

State of New Mexico
Energy Minerals and Natural ResourcesOil Conservation Division
1220 South St. Francis Dr.
Santa Fe, NM 87505

Form C-144

March 12, 2004

For drilling and production facilities, submit to appropriate NMOC District Office.
For downstream facilities, submit to Santa Fe office**Pit or Below-Grade Tank Registration or Closure**Is pit or below-grade tank covered by a "general plan"? Yes ☒ No ☐Type of action: Registration of a pit or below-grade tank ☒ Closure of a pit or below-grade tank ☐Operator: **Mack Energy Corporation**Telephone: **(505)748-1288**e-mail address: **jerrys@mackenergycorp.com**Address: **P.O. Box 960, Artesia, NM 88211-0960**Facility or well name: **Bassett Birney #2**API #: **30-025-39167** U/L or Qtr/Qtr **4** Sec **5** T **18S** R **32E**County: **Lea**

Latitude

Longitude

NAD: 1927 ☐ 1983 ☐Surface Owner Federal ☒ State ☐ Private ☐ Indian ☐**Pit**Type: Drilling ☒ Production ☐ Disposal ☐Workover ☐ Emergency ☐Lined ☒ Unlined ☐Liner type: Synthetic ☒ Thickness **12** mil Clay ☐ Volume **2000** bbl**Below-grade tank**

Volume: _____ bbl Type of fluid: _____

Construction material: _____

Double-walled, with leak detection? Yes ☐ If not, explain why not, _____

Depth to ground water (vertical distance from bottom of pit to seasonal high water elevation of ground water.)

Less than 50 feet

(20 points)

50 feet or more, but less than 100 feet

(10 points)

100 feet or more

(0 points)

0 Points

Wellhead protection area: (Less than 200 feet from a private domestic water source, or less than 1000 feet from all other water sources.)

Yes

(20 points)

No

(0 points)

0 Points

Distance to surface water: (horizontal distance to all wetlands, playas, irrigation canals, ditches, and perennial and ephemeral watercourses.)

Less than 200 feet

(20 points)

200 feet or more, but less than 1000 feet

(10 points)

1000 feet or more

(0 points)

0 Points

Ranking Score (Total Points)

0 Points**If this is a pit closure:** (1) attach a diagram of the facility showing the pit's relationship to other equipment and tanks. (2) Indicate disposal location:onsite ☐ offsite ☐ If offsite, name of facility _____(3) Attach a general description of remedial action taken including remediation start date and end date. (4) Groundwater encountered: No ☐ Yes ☐ If yes, show depth below ground surface _____ ft. and attach sample results. (5) Attach soil sample results and a diagram of sample locations and excavations.I hereby certify that the information above is true and complete to the best of my knowledge and belief. I further certify that the above-described pit or below-grade tank has been/will be constructed or closed according to NMOC guidelines ☐, a general permit ☒, or an (attached) alternative OCD-approved plan ☐Date: **3/30/2005**Printed Name/Title: **Jerry W. Sherrell/Production Clerk**

Signature

Jerry W. Sherrell

Your certification and NMOC approval of this application/closure does not relieve the operator of liability should the contents of the pit or tank contaminate ground water or otherwise endanger public health or the environment. Nor does it relieve the operator of its responsibility for compliance with any other federal, state, or local laws and/or regulations.

Approval:

Date: **3/30/05**

Printed Name/Title:

CHRIS WILLIAMS

Signature

Chris Williams