

Submit 3 Copies To Appropriate District Office
District I
1625 N. French Dr., Hobbs, NM 88240
District II
1301 W. Grand Ave., Artesia, NM 88210
District III
1000 Rio Brazos Rd., Aztec, NM 87410
District IV
1220 S. St. Francis Dr., Santa Fe, NM 87505

State of New Mexico
Energy, Minerals and Natural Resources

Form C-103
May 27, 2004

OIL CONSERVATION DIVISION
1220 South St. Francis Dr.
Santa Fe, NM 87505

WELL API NO.	30-025-02921
5. Indicate Type of Lease	STATE <input checked="" type="checkbox"/> FEE <input type="checkbox"/>
6. State Oil & Gas Lease No.	B-1423
7. Lease Name or Unit Agreement Name	East Vacuum Grayrug San Andres Unit Tract # 2819
8. Well Number	002
9. OGRID Number	217817
10. Pool name or Wildcat	Vacuum Gb/Sa

SUNDRY NOTICES AND REPORTS ON WELLS
(DO NOT USE THIS FORM FOR PROPOSALS TO DRILL OR TO DEEPEN OR PLUG BACK TO A DIFFERENT RESERVOIR. USE "APPLICATION FOR PERMIT" (FORM C-101) FOR SUCH PROPOSALS.)

1. Type of Well: Oil Well <input type="checkbox"/> Gas Well <input type="checkbox"/> Other <input type="checkbox"/> Injection
2. Name of Operator ConocoPhillips
3. Address of Operator 4001 Penbrook Odessa, TX 79762
4. Well Location Unit Letter <u>H</u> : 1980 feet from the <u>North</u> line and <u>660</u> feet from the <u>East</u> line Section <u>28</u> Township <u>17S</u> Range <u>35E</u> NMPM County <u>Lea</u>
11. Elevation (Show whether DR, RKB, RT, GR, etc.) 3932' GL

Pit or Below-grade Tank Application ☐ or Closure ☐

Pit type _____ Depth to Groundwater _____ Distance from nearest fresh water well _____ Distance from nearest surface water _____

Pit Liner Thickness: _____ mil Below-Grade Tank: Volume _____ bbls; Construction Material _____

12. Check Appropriate Box to Indicate Nature of Notice, Report or Other Data

NOTICE OF INTENTION TO:

PERFORM REMEDIAL WORK ☐ PLUG AND ABANDON ☐
TEMPORARILY ABANDON ☐ CHANGE PLANS ☐
PULL OR ALTER CASING ☐ MULTIPLE COMPL ☐

OTHER: ☐

SUBSEQUENT REPORT OF:

REMEDIAL WORK ☐ ALTERING CASING ☐
COMMENCE DRILLING OPNS. ☐ P AND A ☐
CASING/CEMENT JOB ☐

OTHER: Convert to Injector ☒

13. Describe proposed or completed operations. (Clearly state all pertinent details, and give pertinent dates, including estimated date of starting any proposed work). SEE RULE 1103. For Multiple Completions: Attach wellbore diagram of proposed completion or recompletion.

ConocoPhillips by authority granted in Administrative Order # PMX 228 dated 02/08/2005 converted this well to an injection well. See attached.



I hereby certify that the information above is true and complete to the best of my knowledge and belief. I further certify that any pit or below-grade tank has been/will be constructed or closed according to NMOCD guidelines ☐, a general permit ☐ or an (attached) alternative OCD-approved plan ☐.

SIGNATURE Kay Maddox TITLE Regulatory Agent DATE 06/29/2005

Type or print name Kay Maddox

E-mail address: _____

Telephone No. (432)368-1207

For State Use Only

APPROVED BY: Larry Wink OCCUPATIONAL REPRESENTATIVE II/STAFF MANAGER DATE _____

Conditions of Approval (if any): _____

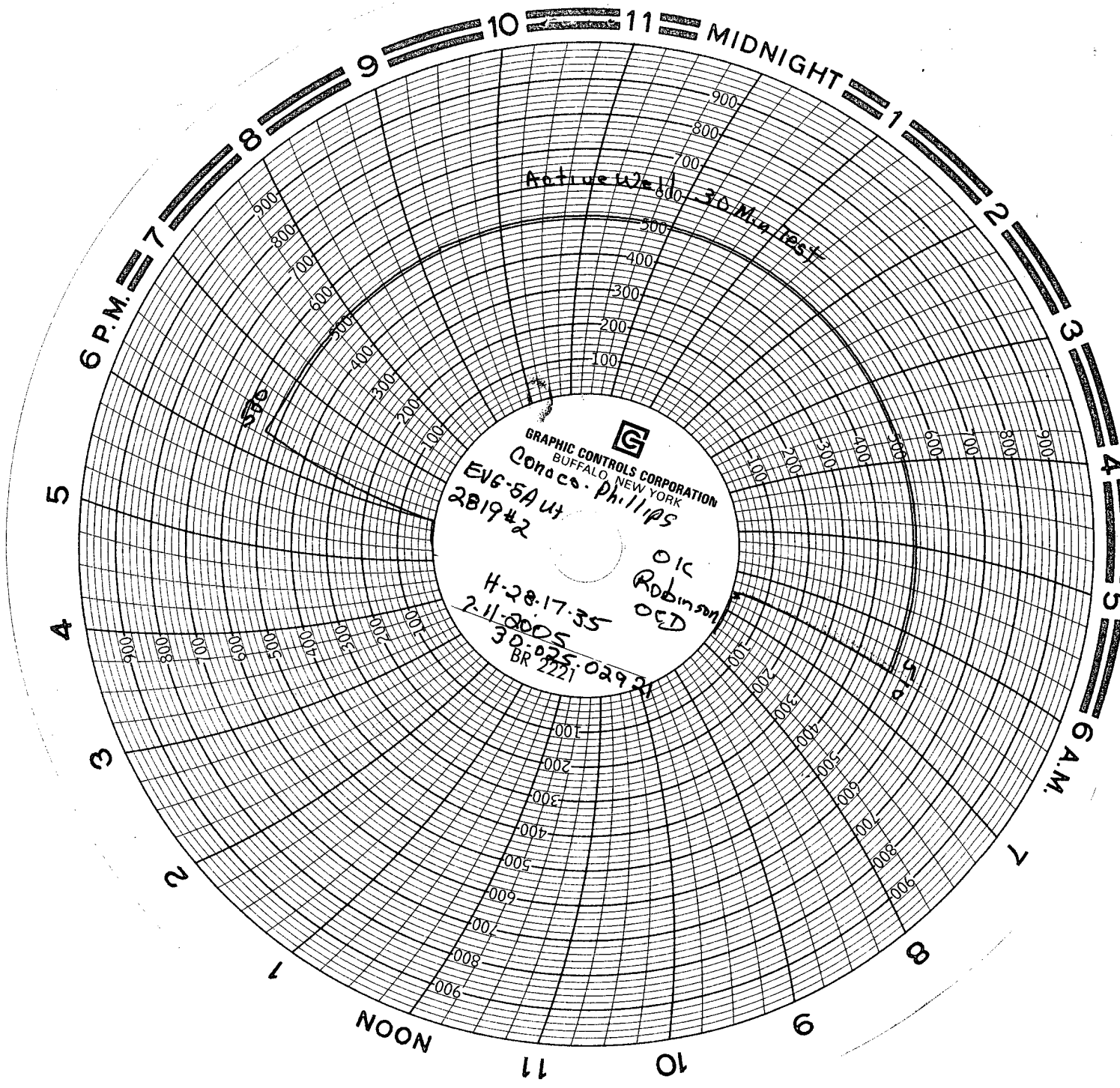
JUL 25 2005

API/Bottom Hole UWI 300250292100	Field Name DISTRICT - E VACUUM SUB-D	Area BUCKEYE	County LEA	State/Province NEW MEXICO	Operator PHILLIPS PETROLEUM CO	License No.
Original KB Elevation (ft) 0.00	Ground Elevation (ft) 3,932.00	KB-CF (ft) 0.00	KB-TH (ft) 0.00	Spud Date 4/3/1939	Rig Release Date 7/18/2002 9:00:00 AM	

Start Date	Last 24hr Sum	Day Total	Cum Cost
5/3/2005 00:00	MI RU POOL DDU 680. HAVE PJSM. CIRC WELL DEAD, WITH 85 BBL 10# BRINE, UNSEAT PUMP AND COOH LAYING DOWN ALL RODS, NIPPLE UP BOP, COOH LAYING DOWN PROD TBG. SISO.	2,750.00	2,750.00
5/4/2005 00:00	HAVE PJSM. FINISH LAYING DOWN PRODUCTION TBG, UNLOAD 2 7/8 WORK STG. PICK UP CASING SCRAPER AND TRIP TO 4240'. GIH WITH SAND LINE BAILER TAG FILL AT 4620'. TD 4660'. PICK HYDROSTATIC BAILER AND START IN HOLE TO CLEAN UP FILL. SISO.	3,355.00	6,105.00
5/5/2005 00:00	GIH WITH BAILER, CLEAN OUT TO TD 4660', COOH, GIH OPEN ENDED TO 4660 SPOT 1,000 XYLENE. COME UP HOLE. SHUT WELL IN OVER NITE. WE ARE TO RUN PKR IN MORNING.	4,348.00	10,453.00
5/6/2005 00:00	GIH WITH TREATING PKR ON 2 7/8 WORK STG. SET PKR AT 4195' LOAD BACK SIDE AND PRESS TEST CASING. WILL NOT HOLD PRESS. PUMP IN LEAK AT 400 PSI - 1/2 BPM. RELEASE PKR AND COOH, RUN KILL STG. SISO.	7,197.00	17,650.00
5/9/2005 00:00	HAVE PJSM, PICK UP RBP AND GIH AND SET AT 4194'. COOH WITH TBG, PICK UP RTTS PKRGIH TO 3007 SET PKR PRESS TEST RBP TO 500 PSI, RELEASE PKR AND CIRC WELL BORE WITH FRESH WATER, SISO.	5,060.00	22,710.00
5/10/2005 00:00	HAVE PJSM. AT 3000' SET PKR AND TEST CASING. COME UP WELL BORE TESTING CASING WITH PKR AT 2697' CASING LEAKING. ISOLATE LEAK AT 2731- 2763 [OLD SQUEEZE HOLES 12/28/01] GET A INJECTION RATE OF 1/2 BPM AT 300 PSI. COOH WITH PKR. GIH OPEN ENDED TO 2800 DUMP 2 SXS SAND ON TOP OF RBP. PICK UP CEMENT RETAINER SET AT 2697'. MI RU SCHLUMBERGER CEMENT PUMPING EQUIPMENT. PUMPED 85 BBL CEMENT CLASS C NEAT W/2% KCL. SHUT IN PRESS 1588 PSI. WASHED UP, AND REPRESSURED TO 1590-1600 PSI. COOH WITH TBG RD CEMENT PUMP. SHUT WELL IN.	10,233.00	32,943.00
5/11/2005 00:00	PULL KILL STG, PICK UP BIT AND DRILL COLLARS ON 2 7/8 WORK STG. GIH TAG TOP CEMENT SHUT DOWN	2,550.00	35,493.00
5/12/2005 00:00	HAVE SAFETY MEETING WITH WEATHERFORD AND POOL. PICK UP POWER SWIVEL AND BEGIN DRILL OUT. DRILLED 5' CEMENT. 4' CEMENT RETAINER AND 5' OF CEMENT BELOW RETAINER. THE LOWER CEMENT WAS NOT FULLY CURED. PULLED TBG UP HOLE. WASHED UP AND SHUT DOWN.	2,440.00	37,933.00
5/13/2005 00:00	RESUME DRILLING, CLEAN UP CASING AND CEMENT STRINGERS DOWN TO 2800'. WASH UP CASING, PRESS TEST CASING, SLITE LEAK OFF, COOH AND LAY DOWN COLLARS, RUN KILL STG. SISO.		37,933.00
5/16/2005 00:00	CASING PRESS 350 PSI. COOH WITH TBG. PICK UP PKR AND GIH. SET PKR BELOW SQUEEZE HOLES TEST RBP TO 500 PSI. PLUG IS GOOD. PULL UP TO EXPOSE CASING LEAK 2763' PRESS TEST TO 500 PSI HELD PRESS FOR 30 MIN. PULL UP TO EXPOSE 2731'. SET PKR AND PRESS UP ON CASING. LEAK OFF AT 1/4 BPM AT 400-450 PSI. LOAD BACK SIDE AND PRESS UP. LEAK OFF. PULL UP HOLE TO 1850 OLD SQUEEZE HOLES PRESS UP ON BACK SIDE. LEAK OFF AT 1/4 BPM AT 450-500 PSI. PULL PKR TO 1825'. PRESS UP TO 500 PSI. NO PRESS DROP. CASING OK FROM SURFACE DOWN TO 1850, SECOND LEAK AT 2731'. SET UP CEMENT SQUEEZE WITH SCHLUMBERGER. RAN KILL STG AND SHUT DOWN.	3,732.00	41,665.00
5/17/2005 00:00	PULL KILL STG. 350 PSI ON TBG. PICK UP EZ DRILL CEMENT RETAINER AND GIH. SET RETAINER AT 2697'. CASING LEAK AT 2731'. RU SCHLUMBERGER AND BEGIN SQUEEZE. PUMPED 1 BPM RATE AT 700-764 PSI. WITH 4 BBL CEMENT LEFT IN TBG SHUT DOWN, TBG PRESS AT 975 PSI. WAIT 15 MIN AND BRING UP PUMP ON LINE 0.2 BPM PRESS 1071 PSI. SHUT DOWN AND WAIT 15 MIN. COME BACK ON LINE AT 0.3 BPM TBG PRESS 1094 PSI. SHUT DOWN. STING OUT OF RETAINER AND REVERSE TO PIT. COOH WITH TBG AND SETTING TOOL. PICK UP RETAINER [2] AND GIH TO 1823', CASING LEAK AT 1850'. STING OUT OF RETAINER BREAK CIRC AND BEGIN PUMPING CEMENT ON SPOT. WITH 10 BBL CEMENT PUMPED, STING BACK IN TO RETAINER. PRESS UP ON TBG. PRESS WENT TO 2400 PSI AND HELD, SHUT DOWN GOT OUT OF RETAINER AND CLEARED TBG, COOH WITH TBG AND SETTING TOOL. THE SETTING TOOL WILL NOT EXTEND OUT TO FULL LENGTH. COULD NOT GET CORRECT MAKE UP IN RETAINER. SHUT DOWN WASHED UP PUMPS TO PIT RELEASED SCHLUMBERGER. RAN KILL STG. SHUT WELL IN.	14,509.00	56,174.00
5/18/2005 00:00	WELL SHUT IN TO ALLOW CEMENT TO CURE, CREW ON STAND BY	860.00	57,034.00
5/19/2005 00:00	HAVE SAFETY MEETING, COOH WITH KILL STG. PICK UP BIT AND DRILL COLLARS, GIH TAG TOC AT 1805. BREAK CIRC AND DRILL UP CEMENT AND RETAINER. SHUT BOP IN AND PRESS UP ON BACK SIDE TO 600 PSI, LOST 60 PSI IN 20 MIN. COOH WITH TBG, DRILL COLLARS. PICK UP RETAINER AND GIH TO 1820' LEFT RETAINER SWINGING. SHUT DOWN. TO PUMP CEMENT SQUEEZE IN MORNING.	3,963.00	60,997.00

Wellbore Name	Date	Measurement Method	Type	Depth (ftKB)

Start Date	Last 24hr Sum	Day Total	Cum Cost
5/20/2005 00:00	HAVE SAFETY MEETING, SET RETAINER AT 1790' MI RU SCHLUMBERGER CEMENT EQUIPMENT, STING OUT OF RETAINER AND BREAK CIRC TO SURFACE, SET BACK DOWN ON RETAINER, UN ABLE TO PUMP THRU RETAINER, COOH WITH SETTING TOOL. RD SCHLUMBERGER, GIH WITH BIT AND DRILL COLLARS ON WORK STG. SHUT DOWN.	5,389.00	66,386.00
5/23/2005 00:00	DRILL OUT RETAINER AT 1790', GIH AND TAG TOC AT 2665' BEGIN DRILLING ON RETAINER/CEMENT.	4,000.00	70,386.00
5/24/2005 00:00	DRILL ON CEMENT RETAINER AND CEMENT, DOWN TO 2697'	4,000.00	74,386.00
5/25/2005 00:00	DRILL OUT CEMENT, GO TO BTM CLEANING UP ANY CEMENT STRINGERS. SHUT BOP IN AND PRESS UP ON CASING TO 550 PSI. IN 30 MIN HAD A PRESS LOSS TO 530 PSI [20 PSI] WASH SAND OFF RBP, COOH WITH TBG AND LAY DOWN DRILL COLLARS. PICK UP ON-OFF TOOL AND START IN HOLE WITH TBG SHUT WELL IN.	5,472.00	79,858.00
5/26/2005 00:00	HAVE PJSM. PRESS TEST CASING TO 550 PSI, WATCH FOR 30 MIN, 20 PSI LEAK OFF. GIH WITH ON-OFF TOOL, CIRC WELL BORE WITH 10# BRINE. RELEASE RBP. TBG PRESS GAINED FROM 50 TO 150 PSI, CASING PRESS DEAD. PUMPED 60 BBL DOWN TBG. PRESS BLEEDS DOWN TO 0. COOH WITH RBP, PICK UP PKR AND GIH AND SET AT 4197'. BACK SIDE STANDING FULL. SIDS	3,294.00	83,152.00
5/27/2005 00:00	MI RU SCHLUMBERGER ACID. HAVE PJSM. TEST LINES AND PUMP ACID JOB. ACIDIZE OPEN HOLE [4249-4640] WITH 4000 GAL 15% NEFE HCL ACID CARRING 2000 LBS SALT BLOCK. FLUSH TO TD. MAX PRESS 2137 PSI. AT 4.9 BPM. ISIP 1622 PSI. 5 MIN 1360. 10 MIN 1154. 15 MIN 1053 PSI. SHUT WELL IN RD SCHLUMBERGER. TBG PRESS 955. OPEN WELL UP TO RECOVER LOAD/CLEAN UP. RECOVERED 90 BBL. SIDS.	34,970.00	118,122.00
5/31/2005 00:00	OPEN WELL UP TO FRAC TANK FOR 8 HRS, BACK FLOW 350 BBL WATER, TRACE OF OIL, GOOD VOLUME OF CO2. SIDS	1,900.00	120,022.00
6/1/2005 00:00	HAVE PJSM. TBG PRESS 400 PSI. RU POOL PUMP TRUCK AND KILL WELL. RELEASE PKR AND COOH LAYING DOWN TBG. RUN KILL STG. SIDS	2,600.00	122,622.00
6/2/2005 00:00	HAVE PJSM. 400 PSI ON TBG, CASING. KILL WELL. COOH WITH KILL STG, PICK UP INJECTION PACKER, ON-OFF TOOL. RU TBG TESTERS, TALLY NEW TK-99 TBG, GIH WITH PKR [2 7/8 x 5 1/2 BAKER W/1.87 PROFILE NEDOX COATED] AND NEW TBG [2 7/8 TK-99 IPC], TESTING TO 5,000 PSI. PKR HAS PUMP OUT PLUG. HAD TO KILL WELL 2 TIMES WHILE GIH. SET PKR AT 4,180'. SHUT BOP AND PRESS TEST CASING TO 500 PSI, FOR 30 MIN. CASING O.K. SIDS.	41,388.00	164,010.00
6/3/2005 00:00	HAVE PJSM. GET OFF PACKER, CIRC PACKER FLUID AROUND TO SURFACE. GET BACK ON PACKER. SHUT BOP PRESS TEST CASING TO 500 PSI, CHECKING ANY LEAK OFF ON TBG. BOTH ARE OK. NIPPLE DOWN BOP. NIPPLE UP AND LAND INJ WELL HEAD WITH 15 PTS ON TBG. RUN PRESS TEST AND CHART ON CASING. 500 PSI FOR 30 MIN, NO LEAKS. RD POOL DDU. WELL READY FOR INJ. LINE INSTALL.	3,350.00	167,360.00



GRAPHIC CONTROLS CORPORATION
BUFFALO, NEW YORK
Conoco-Phillips
EVE-5A ut
281942
H-28-17-35
2-11-2005
30:025 02931
BR 2221
OIC Robinson
OED

Active Well - 30 Min Test