

State of New Mexico
Energy, Minerals & Natural Resources

RECEIVED

Form C-101
March 4, 2004

District I
1625 N. French Dr., Hobbs, NM 88240
District II
1301 W. Grand Avenue, Artesia, NM 88210
District III
1000 Rio Brazos Rd., Aztec, NM 87410
District IV
1220 S. St. Francis Dr., Santa Fe, NM 87505

Oil Conservation Division
1220 S. St. Francis Dr.
Santa Fe, NM 87505

Submit to appropriate District Office
State Lease - 6 Copies
Fee Lease - 5 Copies

☐ AMENDED REPORT

APPLICATION FOR PERMIT TO DRILL, RE-ENTER, DEEPEN, PLUGBACK, OR ADD A ZONE

| | | |
|--|---|---|
| ¹ Operator Name and Address Nearburg Producing Company 3300 N A St., Bldg 2, Ste 120, Midland, TX 79705 | | ² OGRID Number 015742 |
| ⁴ Property Code 35071 | ⁵ Property Name Red Lake 32 State | ³ API Number 30- 015- 34316 |
| | | ⁶ Well No. 1 |

⁷ Surface Location

| UL or lot no. | Section | Township | Range | Lot. Idn | Feet from the | North/South Line | Feet from the | East/West line | County |
|---------------|---------|----------|-------|----------|---------------|------------------|---------------|----------------|--------|
| G | 32 | 17S | 27E | | 1750 | North | 1650 | East | Eddy |

⁸ Proposed Bottom Hole Location If Different

| UL or lot no. | Section | Township | Range | Lot. Idn | Feet from the | North/South |
|---------------|---------|----------|-------|----------|---------------|-------------|
| | | | | | | |

⁹ Proposed Pool 1 *Glorita*
Red Lake; Yeso

NOTIFY OCD TO WITNESS
ALL CASING STRINGS

Drilling Pit Location and Other Information

| UL or lot no. | Section | Township | Range | Lot. Idn | Feet from the | North/South Line | Feet from the | East/West line | County |
|-----------------------------------|---------|---------------------------------------|-------|--|---------------|------------------------------------|-------------------------------------|--|--------|
| G | 32 | 17S | 27E | | | | | | |
| Depth to ground water | | | | Distance from nearest fresh water well | | | Distance from nearest surface water | | |
| ¹¹ Work Type Code N | | ¹² Well Type Code 0 | | ¹³ Cable/Rotary Rotary | | ¹⁴ Lease Type Code S | | ¹⁵ Ground Level Elevation 3452 | |
| ¹⁶ Multiple No | | ¹⁷ Proposed Depth 3700' | | ¹⁸ Formation Yeso | | ¹⁹ Contractor United | | ²⁰ Spud Date 10/1/05 | |

²¹ Proposed Casing and Cement Program

| Hole Size | Casing Size | Casing weight/foot | Setting Depth | Sacks of Cement | Estimated TOC |
|-----------|-------------|--------------------|---------------|-----------------|---------------|
| 12-1/4 | 8-5/8 | 32# | 1200 | 600 | Surface |
| 7-7/8 | 5-1/2 | 17# | 3700 | 500 | Surface |
| | | | | | |
| | | | | | |
| | | | | | |

²² Describe the proposed program. If this application is to DEEPEN or PLUG BACK, give the data on the present productive zone and proposed new productive zone. Describe the blowout prevention program, if any. Use additional sheets if necessary.

Propose to drill well to sufficient depth to evaluate the Yeso formation. Perf. test and stimulate as necessary to establish production.

Acreage dedication is ~~20~~ acres.

²³ I hereby certify that the information given above is true and complete to the best of my knowledge and belief. I further certify that the drilling pit will be constructed according to NMOC guidelines ☒ a general permit ☐, or an (attached) alternative OCD-approved plan ☐.

Signature: *Sarah Jordan*

Printed name: Sarah Jordan

Title: Production Analyst

E-mail Address: sjordan@nearburg.com

Date: 8.29.05

Phone: 432/686-8235 x 203

OIL CONSERVATION DIVISION

Approved by:

Title:

Approval Date: SEP 01 2005 Expiration Date: SEP 01 2008

Conditions of Approval:

Attached ☐ See Above

DISTRICT I

1625 N. FRENCH DR., ROSAS, NM 88240

DISTRICT II

1301 W. GRAND AVENUE, ARTESIA, NM 88210

DISTRICT III

1000 Rio Brazos Rd., Aztec, NM 87410

DISTRICT IV

1220 S. ST. FRANCIS DR., SANTA FE, NM 87505

State of New Mexico

Energy, Minerals and Natural Resources Department

OIL CONSERVATION DIVISION

1220 SOUTH ST. FRANCIS DR.
Santa Fe, New Mexico 87505

Form C-102

Revised JUNE 10, 2003

Submit to Appropriate District Office

State Lease - 4 Copies

Fee Lease - 3 Copies

WELL LOCATION AND ACREAGE DEDICATION PLAT

☐ AMENDED REPORT

| | | |
|---------------------|---|--------------------------------------|
| API Number | Pool Code 51120 | Pool Name Red Lake; Glorieta-Ueso |
| Property Code | Property Name RED LAKE 32 STATE | Well Number 1 |
| OGRID No. 015742 | Operator Name NEARBURG PRODUCING COMPANY | Elevation 3452' |

Surface Location

| UL or lot No. | Section | Township | Range | Lot Idn | Feet from the | North/South line | Feet from the | East/West line | County |
|---------------|---------|----------|-------|---------|---------------|------------------|---------------|----------------|--------|
| G | 32 | 17-S | 27-E | | 1750 | NORTH | 1650 | EAST | EDDY |

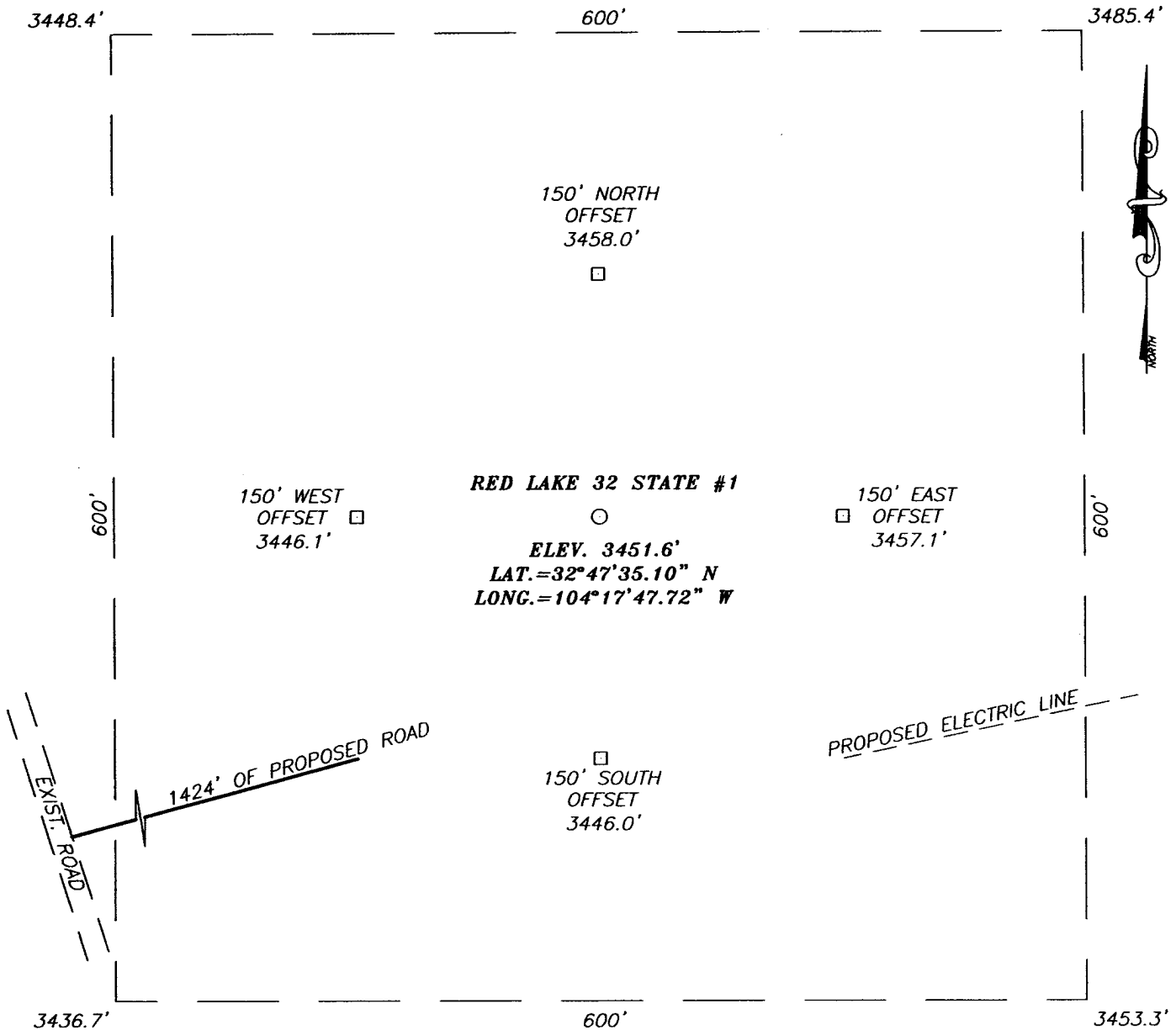
Bottom Hole Location If Different From Surface

| UL or lot No. | Section | Township | Range | Lot Idn | Feet from the | North/South line | Feet from the | East/West line | County |
|------------------------|-----------------|--------------------|-----------|---------|---------------|------------------|---------------|----------------|--------|
| | | | | | | | | | |
| Dedicated Acres 4.0 | Joint or Infill | Consolidation Code | Order No. | | | | | | |

NO ALLOWABLE WILL BE ASSIGNED TO THIS COMPLETION UNTIL ALL INTERESTS HAVE BEEN CONSOLIDATED
OR A NON-STANDARD UNIT HAS BEEN APPROVED BY THE DIVISION

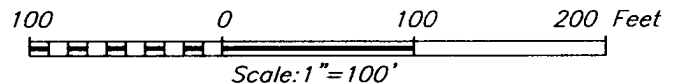
| | | |
|--|--|---|
| <p>GEODETIC COORDINATES NAD 27 NME</p> <p>Y=652237.0 N X=511291.4 E</p> <p>LAT.=32°47'35.10" N LONG.=104°17'47.72" W</p> | | <p>OPERATOR CERTIFICATION</p> <p>I hereby certify that the information contained herein is true and complete to the best of my knowledge and belief.</p> <p>Signature: <i>[Signature]</i></p> <p>Printed Name: <i>S. Jordan</i></p> <p>Title: <i>Prod. Analyst</i></p> <p>Date: <i>8-9-05</i></p> |
| | | <p>SURVEYOR CERTIFICATION</p> <p>I hereby certify that the well location shown on this plat was plotted from field notes of actual surveys made by me or under my supervision and that the same is true and correct to the best of my belief.</p> <p>AUGUST 3, 2005</p> <p>Date Surveyed: <i>LA</i> REV: 8/19/05</p> <p>Signature & Seal of Professional Surveyor: <i>[Signature]</i></p> <p>Certificate No. <i>GARY ELLISON</i> 12641</p> |

SECTION 32, TOWNSHIP 17 SOUTH, RANGE 27 EAST, N.M.P.M.,
EDDY COUNTY, NEW MEXICO



DIRECTIONS TO LOCATION

FROM THE INTERSECTION OF U.S. HWY. #82
(LOVINGTON HWY.) AND CO. RD. #201 (CHALK BLUFF)
GO SOUTH ON CO. RD. #201 APPROX. 3.1 MILES TO
PROPOSED ROAD SURVEY. TURN LEFT AND FOLLOW
PROPOSED ROAD NORTHEAST APPROX. 1424 FEET TO
THIS LOCATION.



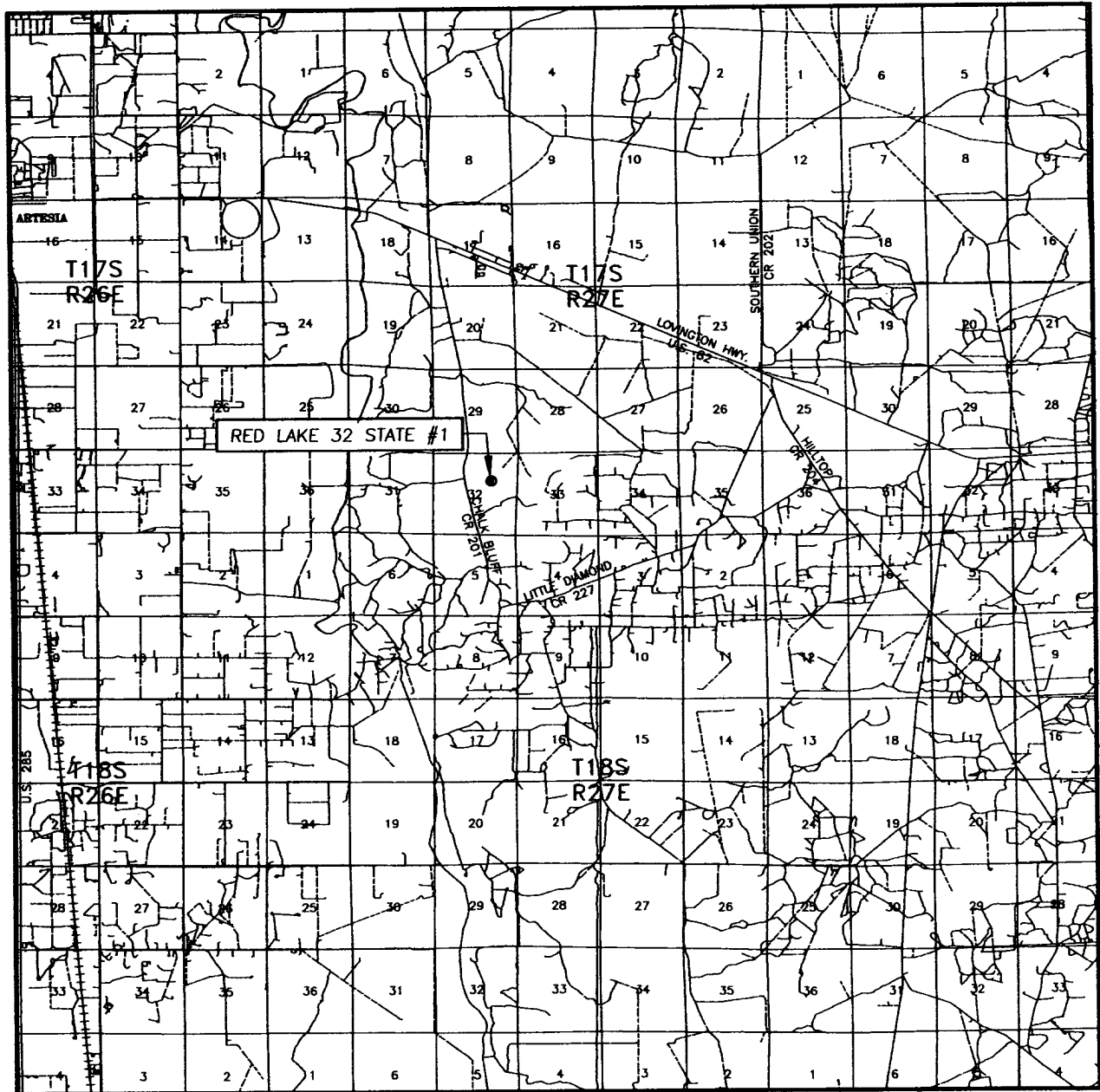
PROVIDING SURVEYING SERVICES
SINCE 1946
JOHN WEST SURVEYING COMPANY
412 N. DAL PASO
HOBBS, N.M. 88240
(505) 393-3117

NEARBURG PRODUCING COMPANY

RED LAKE 32 STATE #1 WELL
LOCATED 1750 FEET FROM THE NORTH LINE
AND 1650 FEET FROM THE EAST LINE OF SECTION 32,
TOWNSHIP 17 SOUTH, RANGE 27 EAST, N.M.P.M.,
EDDY COUNTY, NEW MEXICO.

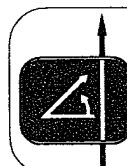
| | | | |
|-------------------------|------------|---------------------|----------------|
| Survey Date: 8/3/05 | | Sheet 1 of 1 Sheets | |
| W.O. Number: 05.11.1222 | | Dr By: LA | Rev 1:8/19/05 |
| Date: 8/05/05 | Disk: CD#4 | 05111222 | Scale: 1"=100' |

VICINITY MAP



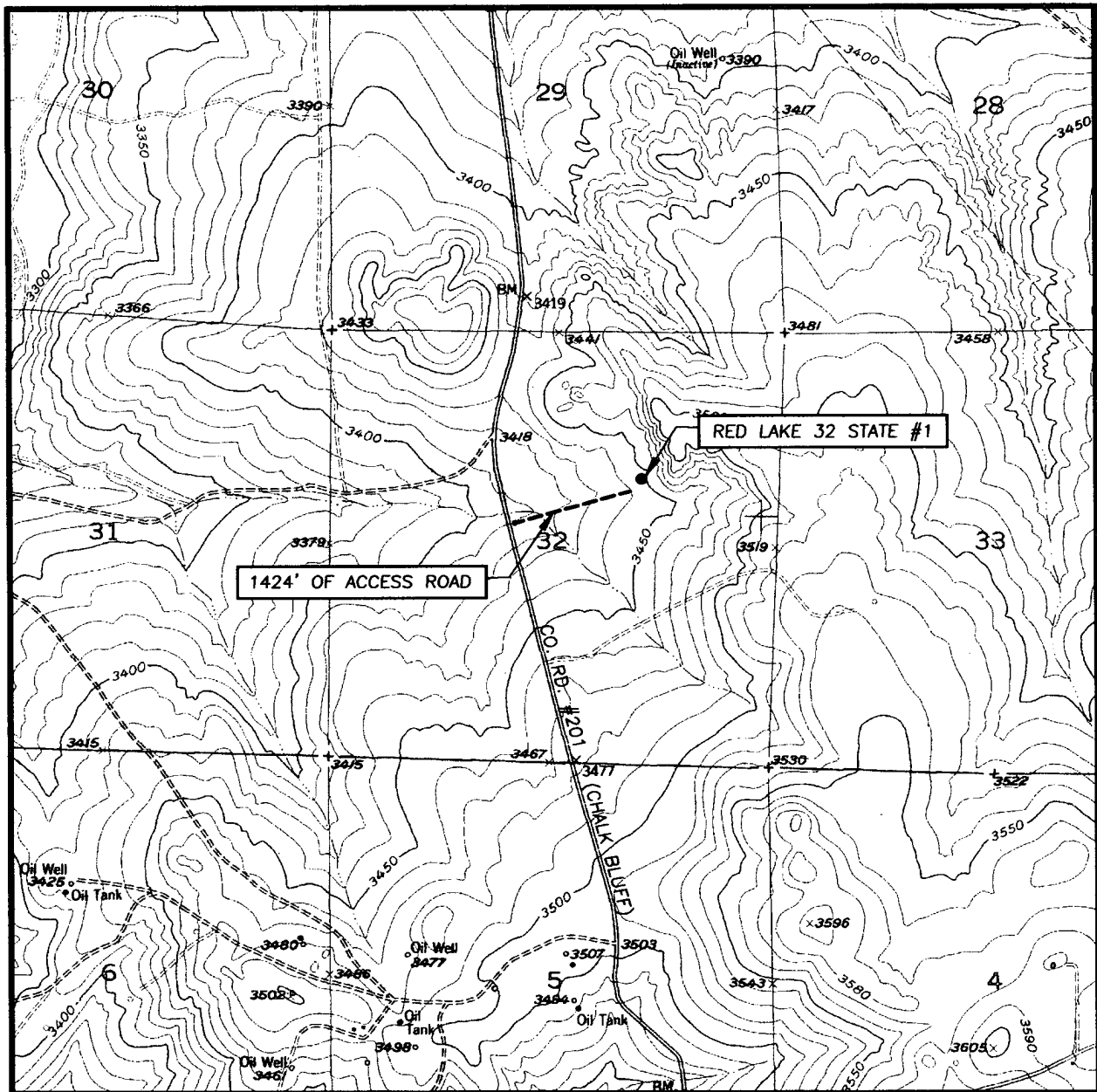
SCALE: 1" = 2 MILES

SEC. 32 TWP. 17-S RGE. 27-E
 SURVEY N.M.P.M.
 COUNTY EDDY
 DESCRIPTION 1750' FNL & 1650' FEL
 ELEVATION 3452'
 OPERATOR NEARBURG PRODUCING COMPANY
 LEASE RED LAKE 32 STATE



PROVIDING SURVEYING SERVICES
 SINCE 1946
JOHN WEST SURVEYING COMPANY
 412 N. DAL PASO
 HOBBS, N.M. 88240
 (505) 383-3117

LOCATION VERIFICATION MAP



SCALE: 1" = 2000'

CONTOUR INTERVAL:
SPRING LAKE, N.M. - 10'

SEC. 32 TWP. 17-S RGE. 27-E

SURVEY _____ N.M.P.M.

COUNTY _____ EDDY

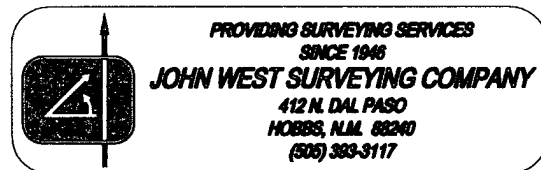
DESCRIPTION 1750' FNL & 1650' FEL

ELEVATION _____ 3452'

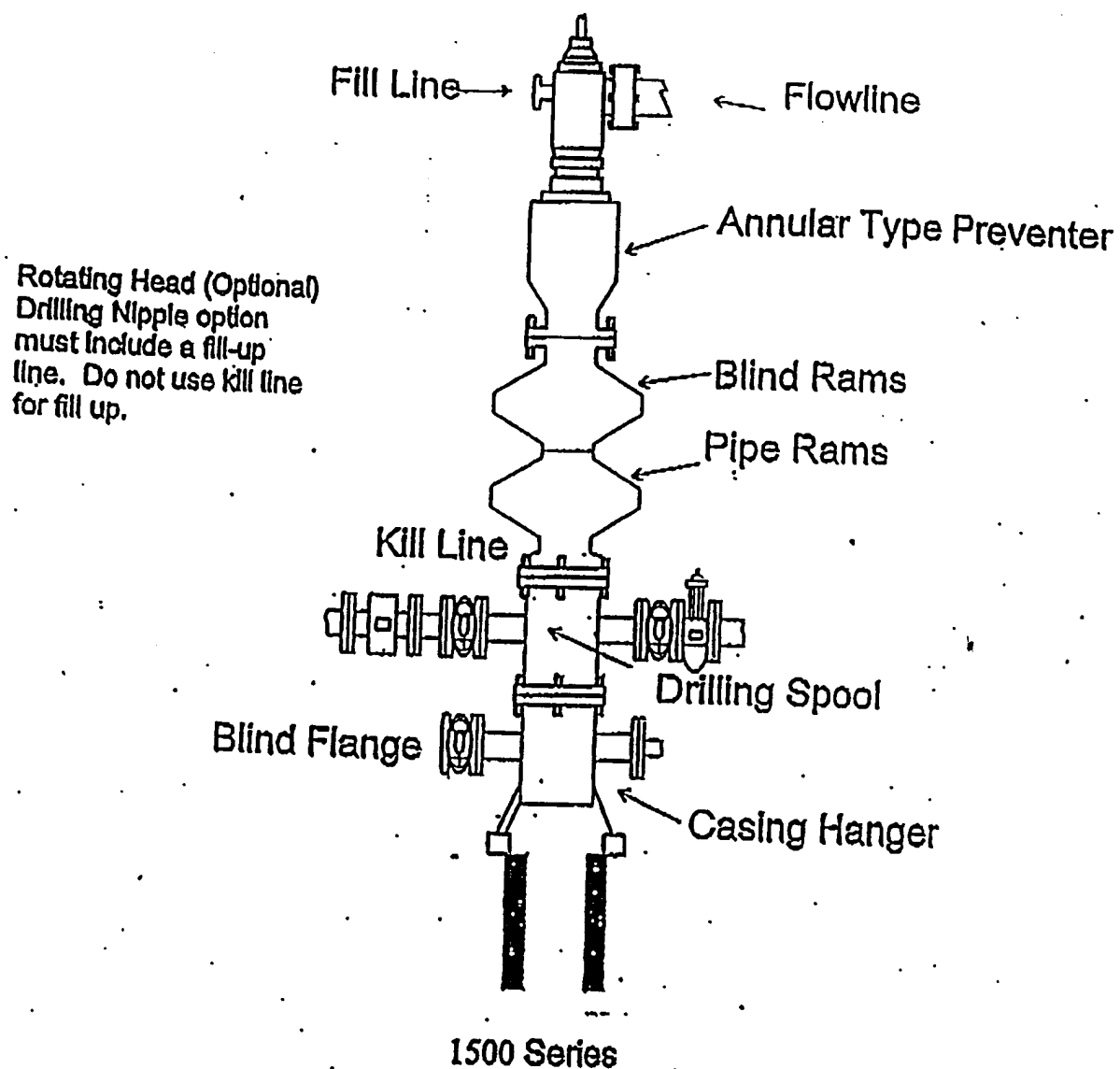
NEARBURG PRODUCING
OPERATOR _____ COMPANY

LEASE _____ RED LAKE 32 STATE

U.S.G.S. TOPOGRAPHIC MAP
SPRING LAKE, N.M.



BOPE SCHEMATIC



CHOKE MANIFOLD 5M SERVICE

