

UNITED STATES NEW MEXICO OIL CONSERVATION DIVISION
DEPARTMENT OF THE INTERIOR
BUREAU OF LAND MANAGEMENT
Hobbs, NM 88240District NO. 1004-0136
Expires: February 28, 1995

APPLICATION FOR PERMIT TO DRILL OR DEEPEN

1a. TYPE OF WORK DRILL <input checked="" type="checkbox"/> DEEPEN <input type="checkbox"/>		5. LEASE DESIGNATION AND SERIAL NO. NM-31224 97148		
b. TYPE OF WELL OIL WELL <input checked="" type="checkbox"/> GAS WELL <input type="checkbox"/> OTHER <input type="checkbox"/>		6. IF INDIAN, ALLOTTEE OR TRIBE NAME -----		
SINGLE ZONE <input checked="" type="checkbox"/> MULTIPLE ZONE <input type="checkbox"/>		7. UNIT AGREEMENT NAME -----		
2. NAME OF OPERATOR POGO PRODUCING COMPANY (RICHARD WRIGHT 432-685-8140) 17891		8. FARM OR LEASE NAME, WELL NO. 34382 FOXGLOVE "30" FEDERAL #2		
3. ADDRESS AND TELEPHONE NO. P.O. BOX 10340 MIDLAND, TEXAS 79702-7340 (432-685-8100)		9. AP WELL NO. 30-025-37459		
4. LOCATION OF WELL (Report location clearly and in accordance with any State requirements.) At surface 660' FSL & 660' FEL SECTION 30 T23S-R33E LEA CO. NM At proposed prod. zone SAME "P"		10. FIELD AND POOL, OR WILDCAT WILDCAT - WOLFCAMP		
14. DISTANCE IN MILES AND DIRECTION FROM NEAREST TOWN OR POST OFFICE* Approximately 25 miles Northwest of Jal New Mexico		11. SEC., T., R., M., OR BLK. AND SURVEY OR AREA SECTION 30 T23S-R33E		
15. DISTANCE FROM PROPOSED* LOCATION TO NEAREST PROPERTY OR LEASE LINE, FT. (Also to nearest drlg. unit line, if any) 660'		12. COUNTY OR PARISH 13. STATE LEA CO. New Mexico		
16. NO. OF ACRES IN LEASE 600		17. NO. OF ACRES ASSIGNED TO THIS WELL 40		
18. DISTANCE FROM PROPOSED LOCATION* TO NEAREST WELL, DRILLING, COMPLETED, OR APPLIED FOR, ON THIS LEASE, FT. 1320'		20. ROTARY OR CABLE TOOLS ROTARY		
19. PROPOSED DEPTH 12,700'		22. APPROX. DATE WORK WILL START* WHEN APPROVED		
21. ELEVATIONS (Show whether DF, RT, GR, etc.) 3687' GR.				
23. PROPOSED CASING AND CEMENTING PROGRAM				
SIZE OF HOLE	GRADE, SIZE OF CASING	WEIGHT PER FOOT	SETTING DEPTH	QUANTITY OF CEMENT
26"	20" conductor	NA	40'	Cement to surface W/Redi-mix.
17 1/2"	13 3/8" H-40	48#	1280'	1100 Sx. circulate cement.
11"	J-55 8 5/8"	32#	5075'	1200 Sx. " "
7 7/8"	HCP 5 1/2"	17#	12,700'	1750 Sx. Est TOC 3000' FS

1. Drill 26" hole to 40'. Set 40' of 20" conductor pipe and cement to surface with Redi-mix.
2. Drill 17 1/2" hole to 1280'. Run and set 1280' of 13 3/8" 48# H-40 ST&C casing. Cement with 1100 Sx. of Class "C" cement + 1/2# Flocele/ Sx., + 2% CaCl, circulate cement to surface.
3. Drill 11" hole to 5075'. Run and set 5075' of 8 5/8" casing as follows: 675' of 8 5/8" 32# N-80 ST&C, 4400' of 8 5/8" 32# J-55 ST&C casing. Cement with 1500 Sx. of Class "C" cement + additives, circulate cement to surface.
4. Drill 7 7/8" hole to 12,700'. Run and set 12,700' of 5 1/2" 17# HCP LT&C casing. Cement in two stages with DV Tool at 7000'±. Cement 1st stage with 1100 Sx. of Class "H" Premium Plus cement + additives, cement 2nd stage with 650 Sx. of Class "C" cement + additives, use caliper log to determine the amount of cement to be used on each stage. Top of cement 3000'.

IN ABOVE SPACE DESCRIBE PROPOSED PROGRAM: If proposal is to deepen, give data on present productive zone and proposed new productive zone. If proposal is to drill or deepen directionally, give pertinent data on subsurface locations and measured and true vertical depths. Give blowout preventer program, if any.

24. APPROVAL SUBJECT TO
SIGNED Joe G. Lara Agent GENERAL REQUIREMENTS 08/16/05
(This space for Federal or State office use) AND SPECIAL STIPULATIONS
ATTACHED

PERMIT NO. _____ APPROVAL DATE _____

Application approval does not warrant or certify that the applicant holds legal or equitable title to those rights in the subject lease which would entitle the applicant to conduct operations thereon.
CONDITIONS OF APPROVAL IF ANY:

ACTING

SEP 15 2005

APPROVED BY /s/ Joe G. Lara TITLE FIELD MANAGER DATE _____

*See Instructions On Reverse Side APPROVAL FOR 1 YEAR

☐ AMENDED REPORT

API Number 30.025.37459	Pool Code	Pool Name WILDCAT-WOLFCAMP
Property Code 34382	Property Name FOXGLOVE 30 FEDERAL	Well Number 2
OGRID No. 17891	Operator Name POGO PRODUCING COMPANY	Elevation 3687'

Surface Location

UL or lot No.	Section	Township	Range	Lot Idn	Feet from the	North/South line	Feet from the	East/West line	County
P	30	23-S	33-E		660	SOUTH	660	EAST	LEA

Bottom Hole Location If Different From Surface

UL or lot No.	Section	Township	Range	Lot Idn	Feet from the	North/South line	Feet from the	East/West line	County
Dedicated Acres 40	Joint or Infill	Consolidation Code		Order No.					

NO ALLOWABLE WILL BE ASSIGNED TO THIS COMPLETION UNTIL ALL INTERESTS HAVE BEEN CONSOLIDATED
OR A NON-STANDARD UNIT HAS BEEN APPROVED BY THE DIVISION

LOT 1					<p>OPERATOR CERTIFICATION</p> <p><i>I hereby certify the the information contained herein is true and complete to the best of my knowledge and belief.</i></p> <p><i>[Signature]</i></p> <p>Signature</p> <p>Joe T. Janica</p> <p>Printed Name</p> <p>Agent</p> <p>Title</p> <p>08/16/05</p> <p>Date</p> <p>SURVEYOR CERTIFICATION</p> <p><i>I hereby certify that the well location shown on this plat was plotted from field notes of actual surveys made by me or under my supervision, and that the same is true and correct to the best of my belief.</i></p> <p>JULY 20, 2005</p> <p>Date Surveyed</p> <p>JR</p> <p>Signature & Seal of Professional Surveyor</p> <p><i>[Signature]</i></p> <p>NEW MEXICO</p> <p>05.11.1120</p> <p>Certification No. GARY EBBSON 12641</p>
37.89 AC					
LOT 2					
37.91 AC					
LOT 3					
37.93 AC					
LOT 4					
37.95 AC					

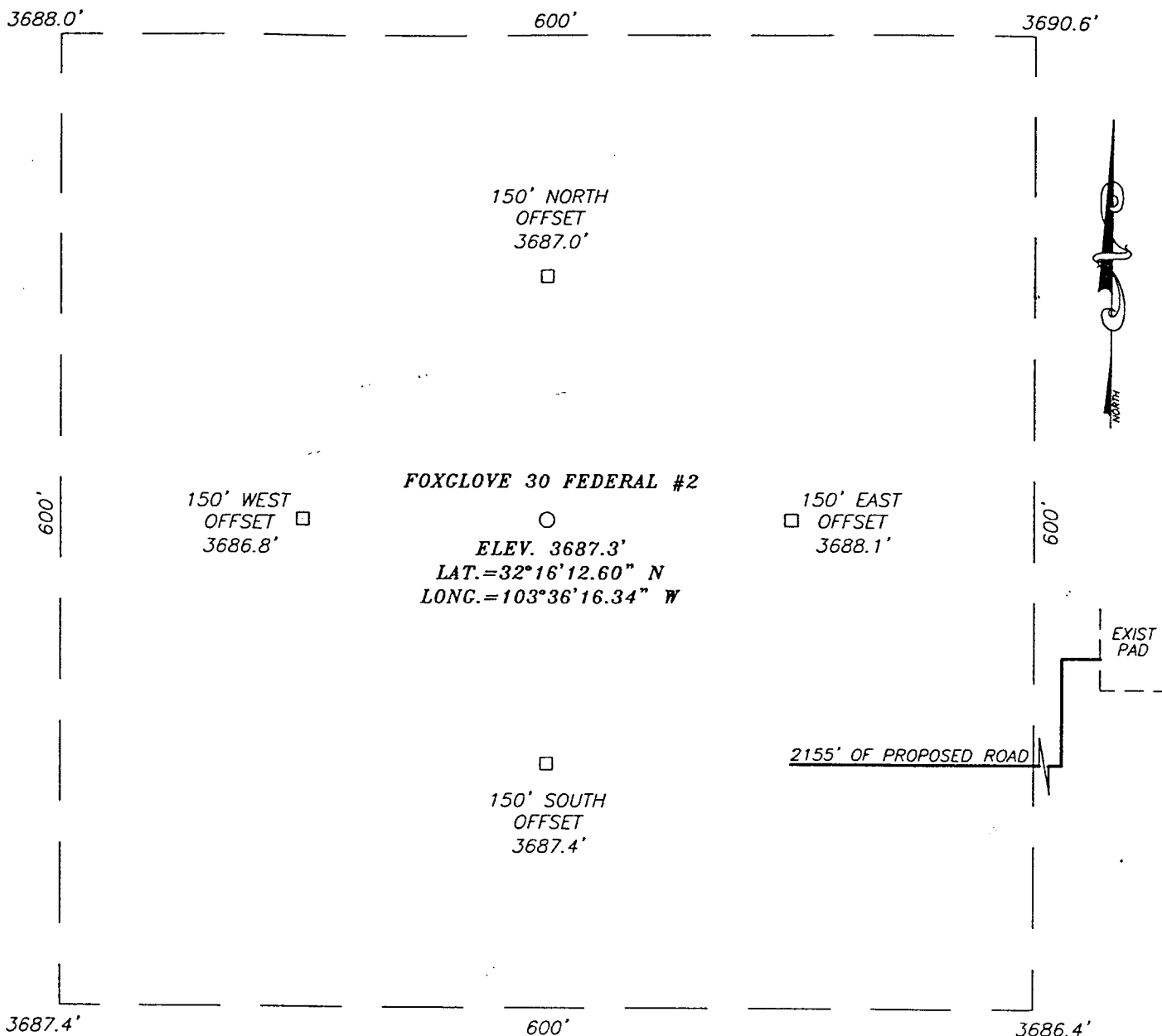
GEODETIC COORDINATE
NAD 27 NME

Y=462769.2 N
X=725260.4 E

LAT.=32°16'12.60" N
LONG.=103°36'16.34" W

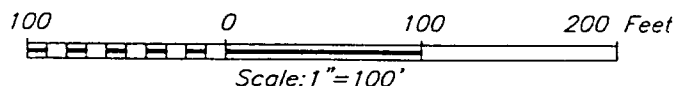
EXHIBIT "A"

SECTION 30, TOWNSHIP 23 SOUTH, RANGE 33 EAST, N.M.P.M.,
LEA COUNTY, NEW MEXICO



DIRECTIONS TO LOCATION

FROM THE INTERSECTION OF ST. HWY. #128 AND LEA CO. RD. J21 (DELAWARE BASIN RD.) GO NORTH ON CO. RD. J21 APPROX. 4.0 MILES TO CO. RD. J2 (XL RD.). TURN LEFT (WEST) AND GO APPROX. 4.0 MILES TO THE BRINNINSTOOL RANCH. TURN LEFT (SE) AND GO APPROX. 0.3 MILES, TURN RIGHT (NW) AND GO APPROX. 0.6 MILES, TURN LEFT (WEST) AND GO APPROX. 0.3 MILES. TURN RIGHT (NORTH) AND GO APPROX. 0.3 MILES TO THE SWc OF THE POGO FOXGLOVE 29 #1 WELL PAD. FOLLOW PROPOSED ROAD SURVEY WEST, SOUTH & WEST APPROX. 2155' TO THIS LOCATION.



POGO PRODUCING COMPANY

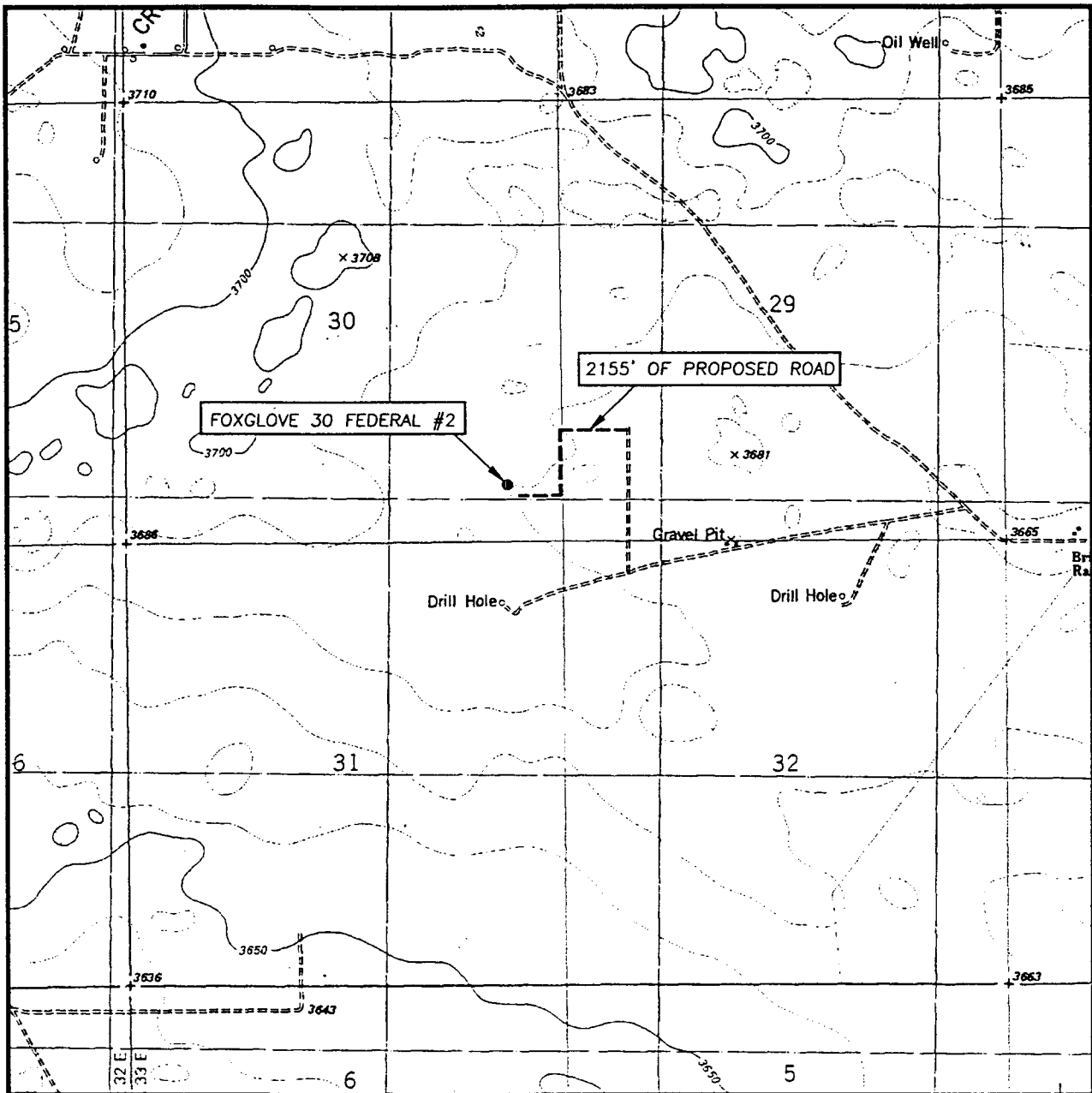
FOXGLOVE 30 FEDERAL #2 WELL
 LOCATED 660 FEET FROM THE SOUTH LINE
 AND 660 FEET FROM THE EAST LINE OF SECTION 30,
 TOWNSHIP 23 SOUTH, RANGE 33 EAST, N.M.P.M.,
 LEA COUNTY, NEW MEXICO.

Survey Date: 07/20/05	Sheet 1 of 1 Sheets
W.O. Number: 05.11.1120	Dr By: J.R. REV: N/A
Date: 07/22/05	Disk: CD#5 05111120 Scale: 1"=100'



PROVIDING SURVEYING SERVICES
 SINCE 1946
JOHN WEST SURVEYING COMPANY
 412 N. DAL PASO
 HOBBS, N.M. 88240
 (505) 393-3117

LOCATION VERIFICATION MAP



SCALE: 1" = 2000'

CONTOUR INTERVAL:
TIP TOP WELLS, N.M. - 10'

SEC. 30 TWP. 23-S RGE. 33-E

SURVEY N.M.P.M.

COUNTY LEA

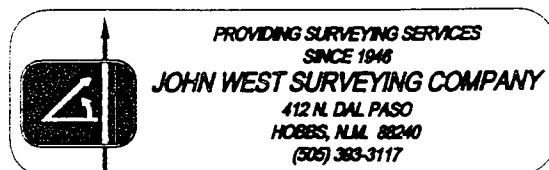
DESCRIPTION 660' FSL & 660' FEL

ELEVATION 3687'

OPERATOR POGO PRODUCING COMPANY

LEASE FOXGLOVE 30 FEDERAL

U.S.G.S. TOPOGRAPHIC MAP
TIP TOP WELLS, N.M.



APPLICATION TO DRILL

POGO PRODUCING COMPANY
FOXGLOVE "30" FEDERAL # 2
UNIT "P" SECTION 30
T23S-R33E LEA CO. NM

In response to questions asked under Section II of Bulletin NTL-6 the following information on the above well is provided for your consideration.

1. Location of well: 660' FSL & 660' FEL SECTION 30 T23S-R33E LEA CO. NM
2. Ground Elevation above Sea Level: 3687' GR.
3. Geological age of surface formation: Quaternary Deposits:
4. Drilling tools and associated equipment: Conventional rotary drilling rig using drilling mud as a circulating medium to remove solids from hole.
5. Proposed drilling depth: 12,700'
6. Estimated tops of geological markers:

Basal Anhydrite	4970'	Bone Spring	9000'
Delaware Group	5120'	1st Bone Spring Sd.	10,100'
Cherry Canyon Sd.	6100'	2nd Bone Spring Sd.	12,000'
Brushy Canyon Sd.	7400'	Wolfcamp	12,350'
7. Possible mineral bearing formations:

Brushy Canyon	Oil
Bone Spring	Oil
Wolfcamp	Oil
8. Casing Program:

Hole Size	Interval	OD of Casing	Weight	Thread	Collar	Grade
26"	0-40	20"	NA	NA	NA	Conductor
17½"	0-1280'	13 3/8"	48#	8-R	ST&C	H-40
11"	0-5075'	8 5/8"	32#	8-R	ST&C	N-80 J-55
7 7/8"	0-12,700'	5½"	17#	8-R	LT&C	HCP

APPLICATION TO DRILL

POGO PRODUCING COMPANY
FOXGLOVE "30" FEDERAL # 2
UNIT "P" SECTION 30
T23S-R33E LEA CO. NM

9. CASING CEMENTING & SETTING DEPTHS:

20"	Conductor	Set 40' of 20" conductor pipe and cement to surface with Redi-mix.
13 3/8"	Surface	Set 1280' of 13 3/8" 48# H-40 ST&C casing. Cement with 1100 Sx. of Class "C" cement + additives, circulate cement to surface.
8 5/8"	Intermediate	Set 5075' of 8 5/8" 32# casing as follows: 675' of 8 5/8" 32# N-80 ST&C, 4400' of 8 5/8" 32# J-55 ST&C casing. Cement with 1500 Sx. of Class "C" cement + additives, circulate cement to surface.
5 1/2"	Production	Set 12,700' of 5 1/2" 17# HCP LT&C casing. Cement in 2 stages with DV Tool at 7000'±. Cement 1st stage with 1100 Sx. of Class "H" Premium Plus cement + additives, cement 2nd stage with 650 Sx. of Class "C" cement + additives. Amount of cement to be determined by the use of caliper log.

10. PRESSURE CONTROL EQUIPMENT: Exhibit "E" shows a 1500 Series 5000 PSI working pressure B.O.P. consisting of an annular bag type preventor, middle blind rams and bottom pipe rams. The B.O.P. will be nipped up on the 13 3/8" casing and tested to API specifications. The B.O.P. will be operated at least once in each 24 hour period and the blind rams will be operated when drill pipe is out of hole on trips. Full opening stabbing valve and upper kelly cock will be utilized. Exhibit "E-1" shows a hydraulically operated closing unit and a 4" 5000 PSI choke manifold with dual adjustable chokes. No abnormal pressures or temperatures are expected.

11. PROPOSED MUD CIRCULATING SYSTEM:

DEPTH	MUD WT.	VISC.	FLUID LOSS	TYPE MUD SYSTEM
40-1280'	8.4-8.7	29-34	NC	Fresh water Spud Mud add paper to control seepage.
1280-5075'	10.0-10.3	29-40	NC	Brine water add paper to control seepage and use high viscosity sweeps to clean hole.
5075-12,700'	8.4-8.7	29-40	NC*	Fresh water use fresh Gel to control viscosity In case water loss control is required use a Dris-pac mud system.

* Water loss control may have to be used in order to run open hole logs, run DST's, and run casing. If this is necessary a Dris-pac system may be used to control water loss.

Sufficient mud materials will be kept on location at all times in order to combat lost circulation, or unexpected kicks. In order to run DST's, open hole logs, and casing viscosity and/or water loss may have to be adjusted to meet these needs.

APPLICATION TO DRILL

POGO PRODUCING COMPANY
FOXGLOVE "30" FEDERAL # 2
UNIT "P" SECTION 30
T23S-R33E LEA CO. NM

12. LOGGING, CORING, AND TESTING PROGRAM:

- A. Open hole logs: Dual Induction, LDT. SNP. Micro SFL, Gamma Ray, Caliper from TD back to 8 5/8" casing shoe.
- B. Cased hole logs: Gamma Ray, Neutron from 8 5/8" casing shoe back to surface.
- C. DST's may be run in zones of interest.
- D. MGD'logger may be rigged up on hole at 5075'.
- E. Cores are not planned at this time.

13. POTENTIAL HAZARDS:

No abnormal pressures or temperatures are expected. There is no known presence of H²S in this area. If H²S is encountered the operator will comply with the provisions of Onshore Oil and Gas Order No. 6. No lost circulation is expected to occur. All personnel will be familiar with all aspects of safe operation of equipment being used to drill this well. Estimated BHP 6500 PSI, and Estimated BHT 195°.

14. ANTICIPATED STARTING DATE AND DURATION OF OPERATION:

Road and location construction will begin after the BLM has approved the APD. Anticipated spud date will be as soon after BLM approval and as soon as a rig will be available. Move in operation and drilling is expected to take 40 days. If production casing is run then an additional 30 days will be needed to complete well and construct surface facilities and/or lay flowlines in order to place well on production.

15. OTHER FACETS OF OPERATIONS:

After running casing, cased hole Gamma Ray, Neutron Collar logs will be run from TD back to all possible productive zones. The Wolfcamp formation will be perforated and stimulated in order to establish production. The well will be swab tested and potentialized as an oil well.

HYDROGEN SULFIDE DRILLING OPERATIONS PLAN

1. All Company and Contract personnel admitted on location must be trained by a qualified H₂S safety instructor to the following:
 - A. Characteristics of H₂S
 - B. Physical effects and hazards
 - C. Proper use of safety equipment and life support systems.
 - D. Principle and operation of H₂S detectors, warning system and briefing areas.
 - E. Evacuation procedure, routes and first aid.
 - F. Proper use of 30 minute pressure demand air pack.
2. H₂S Detection and Alarm Systems
 - A. H₂S detectors and audio alarm system to be located at bell nipple, end of blooie line (mud pit) and on derrick floor or doghouse.
3. Windsock and/or wind streamers
 - A. Windsock at mudpit area should be high enough to be visible.
 - B. Windsock at briefing area should be high enough to be visible.
 - C. There should be a windsock at entrance to location.
4. Condition Flags and Signs
 - A. Warning sign on access road to location.
 - B. Flags to be displayed on sign at entrance to location. Green flag, normal safe condition. Yellow flag indicates potential pressure and danger. Red flag, danger, H₂S present in dangerous concentration. Only emergency personnel admitted to location.
5. Well control equipment
 - A. See exhibit "E"
6. Communication
 - A. While working under masks chalkboards will be used for communication.
 - B. Hand signals will be used where chalk board is inappropriate.
 - C. Two way radio will be used to communicate off location in case of emergency help is required. In most cases cellular telephoned will be available at most drilling foreman's trailer or living quarters.
7. Drillstem Testing
 - A. Exhausts will be watered.
 - B. Flare line will be equipped with an electric ignitor or a propane pilot light in case gas reaches the surface.
 - C. If location is near any dwelling a closed D.S.T. will be performed.

HYDROGEN SULFIDE DRILLING OPERATIONS PLAN

8. Drilling contractor supervisor will be required to be familiar with the effects H_2S has on tubular goods and other mechanical equipment.
9. If H_2S is encountered, mud system will be altered if necessary to maintain control of formation. A mud gas separator will be brought into service along with H_2S scavengers if necessary.

SURFACE USE PLAN

POGO PRODUCING COMPANY
FOXGLOVE "30" FEDERAL # 2
UNIT "P" SECTION 30
T23S-R33E LEA CO. NM

1. EXISTING ROADS & PROPOSED ROADS: Area maps; Exhibit "B" is a reproduction of a County General Hi-way Map. Exhibit "C" is a reproduction of a USGS Topographic Map, showing existing and proposed roads. All existing roads will be maintained in a condition equal to or better than current conditions. Any new roads will be constructed to BLM specifications.
 - A. Exhibit "A" shows the proposed well site as staked.
 - B. From Eunice New Mexico take Delaware Basin Road to the junction with State Hi-way 128, turn Right go 3.3± miles, turn Right go 4 miles, to Ranch House Bear Left follow caliche road 1.4 miles turn Right (North) follow road to well # 1 turn Left (West) go 660' turn South go 800', turn Right (West) go 660' to location.
 - C. Exhibit "C" shows proposed roads and possible powerline routes if the well is completed as a producer.
2. PLANNED ACCESS ROADS: Approximately 2200' of new road will be constructed.
 - A. The access roads will be crowned and ditched to a 12' wide travel surface with a 40' Right-of-Way.
 - B. Gradient of all roads will be less than 5.00%.
 - C. If turn-outs are necessary they will be constructed.
 - D. If needed roads will be surfaced with a minimum of 4" of caliche. This material will be obtained from a local source.
 - E. Center-line for new roads will be flagged. Earth-work will be will be done as field conditions require.
 - F. Culverts will be placed in the access road if they are necessary. The roads will be constructed to utilize low water crossings for drainage as required by topography.
3. LOCATIONS OF EXISTING WELLS IN A ONE MILE RADIUS. EXHIBIT "A-1"
 - A. Water wells - Water well located approximately 1.5 miles East.
 - B. Disposal wells - None known
 - C. Drilling wells - None known
 - D. Producing wells - As shown on Exhibit "A-1"
 - E. Abandoned wells - As shown on Exhibit "A-1"

SURFACE USE PLAN

POGO PRODUCING COMPANY
FOXGLOVE "30" FEDERAL # 2
UNIT "P" SECTION 30
T23S-R33E LEA CO. NM

4. If on completion this well is a producer the operator will lay pipelines and construct powerlines along existing road R-O-W's or other existing R-O-W's. Exhibit "C" shows proposed routes of roads, flowlines and powerlines.

5. LOCATION AND TYPE OF WATER SUPPLY:

Water will be purchased locally from a commercial source and trucked over the access roads or piped to location in flexible lines laid on top of the ground.

6. SOURCE OF CONSTRUCTION MATERIAL:

If possible construction material will be obtained from the excavation of drill site, if additional material is needed it will be obtained from a local source and transported over the access roads as shown on Exhibit "C".

7. METHODS OF HANDLING WASTE MATERIAL:

- A. Drill cuttings will be disposed of in the reserve pits.
- B. All trash, junk and other waste material will be contained in trash cages or trash bins to prevent scattering. When the job is completed all contents will be removed and disposed of in a approved sanitary land fill.
- C. Salts remaining after completion of well will be picked up by the supplier, including broken sacks.
- D. Waste water from living quarters will be drained into holes with a minimum of 10'. These holes will be covered during drilling and will be back filled when the well is completed. A Porto-John will be provided for the rig crews. This equipment will be properly maintained during the drilling and completion operations and will be removed when all operations are complete.
- E. Remaining drilling fluids will be allowed to evaporate in the reserve pits until the pits are dry enough to be broken out for further drying. If the drilling fluids do not evaporate in a reasonable time they will be hauled off by transports to a state approved disposal site. Later pits will be broken out to speed drying. Water produced during completion will be put in reserve pits. Oil and condensate produced will be put in storage tanks and sold.

8. ANCILLARY FACILITIES:

- A. No camps or air strips will be constructed on location.

SURFACE USE PLAN

POGO PRODUCING COMPANY
FOXGLOVE "30" FEDERAL # 2
UNIT "P" SECTION 30
T23S-R33E LEA CO. NM

9. WELL SITE LAYOUT

- A. Exhibit "D" shows the proposed well site layout.
- B. This exhibit indicated proposed location of reserve and sump pits and living facilities.
- C. Mud pits in the active circulating system will be steel pits & the reserve pit is proposed to be unlined unless subsurface condition encountered during pit construction indicate that lining is needed for lateral containment of fluids.
- D. If needed, the reserve pit is to be lined with polyethelene. The pit liner will be 6 mils thick. Pit liner will extend a minimum 2'00" over the reserve pits dikes where the liner will be anchored down.
- E. The reserve pit will be fenced on three sides with four strands of barbed wire during drilling and completion phases. The fourth side will be fenced after all drilling operations have ceased. If the well is a producer, the reserve pit fence will be torn down. The reserve pit and those areas of the location not essential to production facilities will be reclaimed and seeded per BLM requirements.

10. PLANS FOR RESTORATION OF SURFACE

Rehabilitation of the location and reserve pit will start in a timely manner after all drilling operations cease. The type of reclamation will depend on whether the well is a producer or a dry hole.

However, in either event, the reserve pit will be allowed to dry properly, and fluid removed and disposed of in accordance with Article 7.B as previously noted. The pit area will then be leveled and contoured to conform to the original and surrounding area. Drainage systems, if any, will be reshaped to the original configuration with provisions made to alleviate erosion. These may need to be modified in certain circumstances to prevent inundation of the location's pad and surface facilities. After the area has been shaped and contoured, topsoil from the spoil pile will be placed over the disturbed area to the extent possible. Revegetation procedures will comply with BLM standards.

If the well is a dry hole, the pad and road area will be contoured to match the existing terrain. Topsoil will be spread to the extent possible. Revegetation will comply with BLM standards.

Should the well be a producer, the previously noted procedures will apply to those areas which are not required for production facilities.

SURFACE USE PLAN

POGO PRODUCING COMPANY
FOXGLOVE "30" FEDERAL # 2
UNIT "P" SECTION 30
T23S-R33E LEA CO. NM

11. OTHER INFORMATION:

- A. Topography consists of low lying sand dunes with a slight dip to the West. The deep sandy soil supports shinnery oak, native grasses, and an occasional mesquite tree.
- B. The surface is owned by The U.S. Department of Interior and is administered by The Bureau of Land Management. The surface is used for the grazing of livestock and the production of Oil & Gas.
- C. An archaeological survey will be conducted on the location and roads the results will be filed in report form and filed with the Bureau of Land Management Field Office in Carlsbad New Mexico.
- D. There is a dwelling (Ranch House) approximately 1.5 miles East of location.

12. OPERATOR'S REPRESENTATIVES:

Before Construction:

TIERRA EXPLORATION, INC.
P.O. BOX 2188
HOBBS, NEW MEXICO 88241
OFFICE Ph. 505-391-8503
JOE T. JANICA

During and after Construction:

POGO PRODUCING COMPANY
P.O. BOX 10340
MIDLAND, TEXAS 79702-7340
RICHARD WRIGHT
OFFICE Ph. 432 -685-8140

13. CERTIFICATION: I hereby certify that I, or persons under my direct supervision have inspected the proposed drill site and the access roads, and that I am familiar with the conditions which currently exist, that the statements made in this plan are to the best of my knowledge are true and correct, and that the work associated with the operations proposed herein will be performed by POGO PRODUCING COMPANY it's contractors/subcontractors is in conformity with this plan and the terms and conditions under which it is approved. This statement is subject to the provision of U.S.C. 1001 for the filing of a false report.

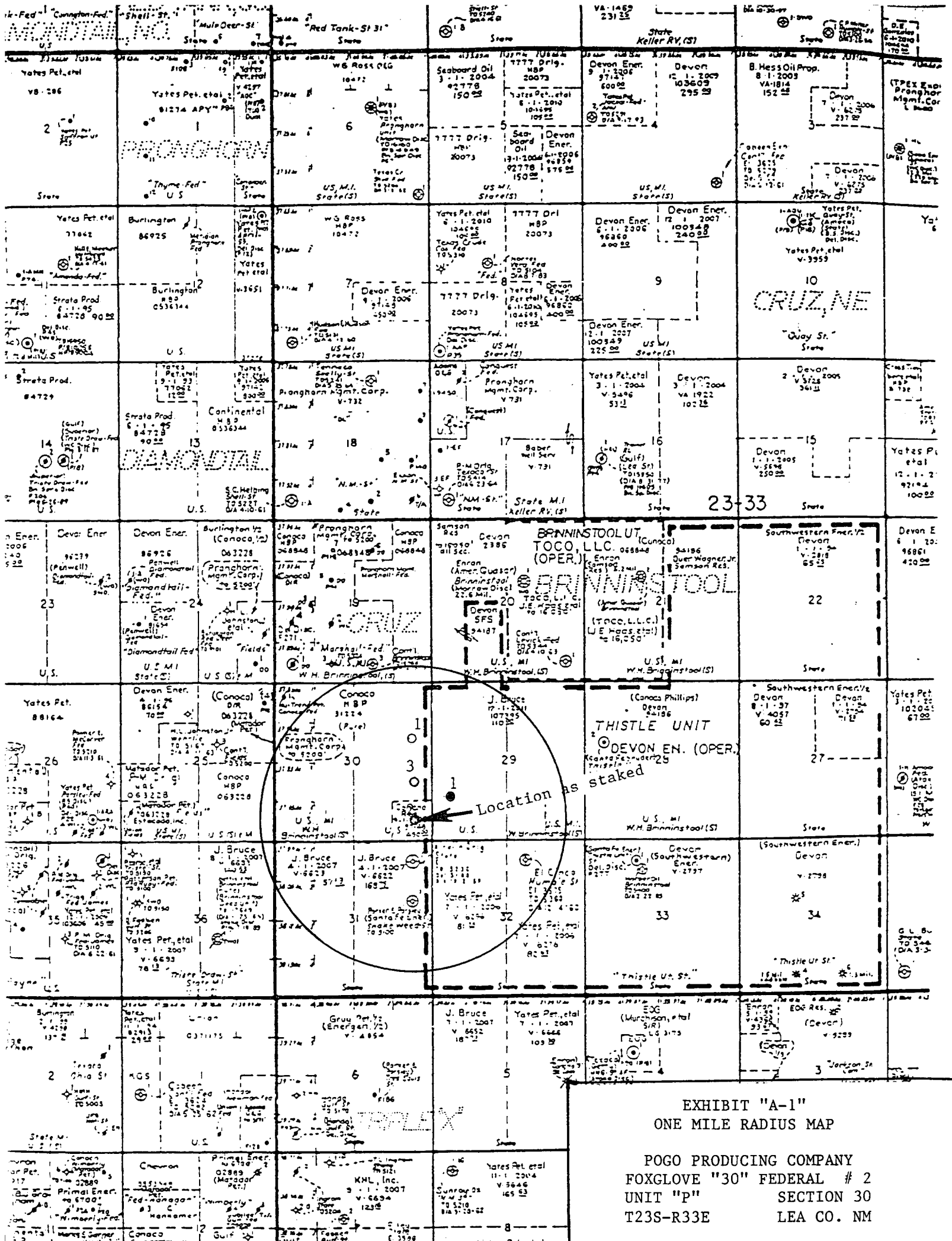
NAME :

DATE :

TITLE :

08/16/05

Agent



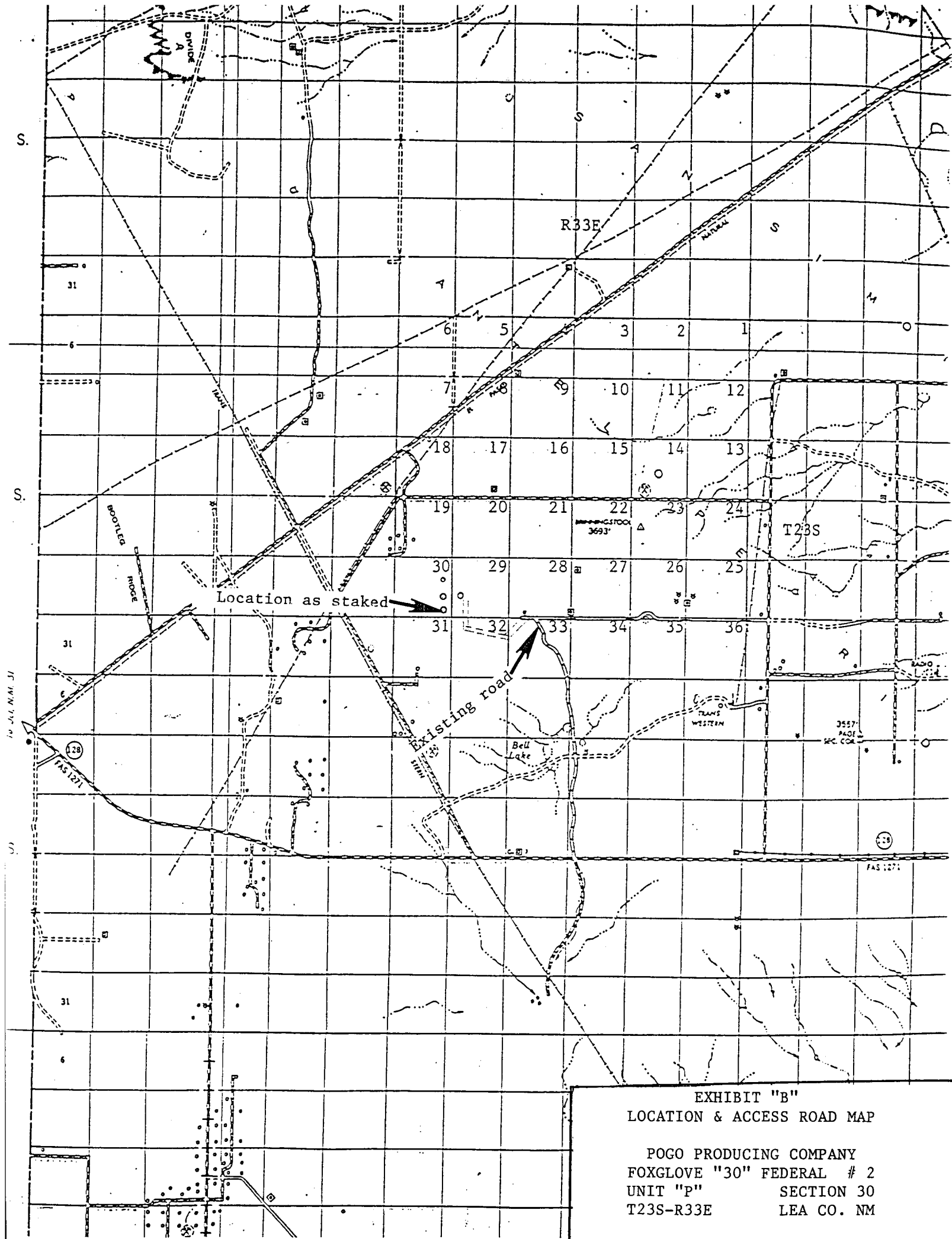
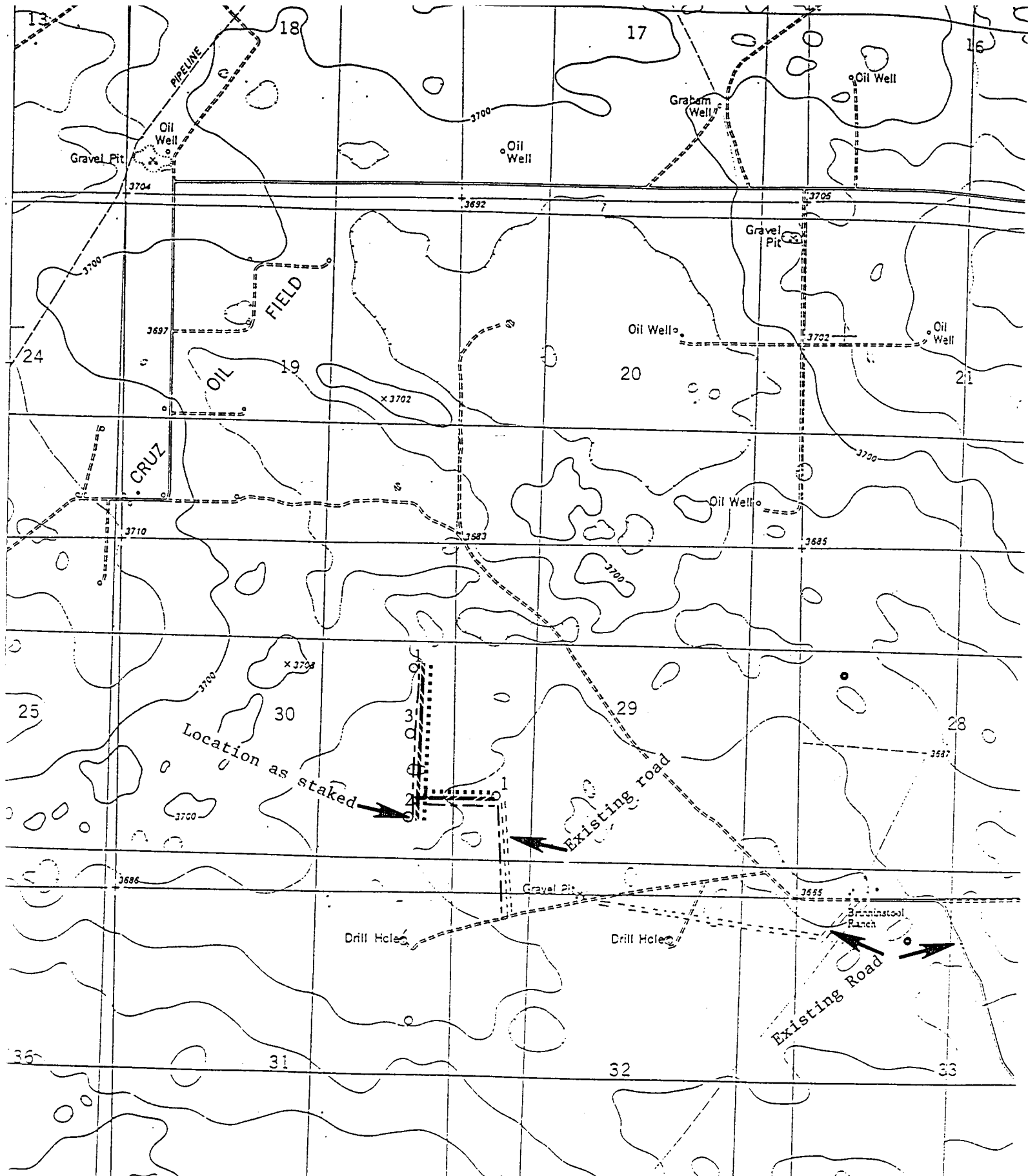


EXHIBIT "B"
LOCATION & ACCESS ROAD MAP

POGO PRODUCING COMPANY
FOXGLOVE "30" FEDERAL # 2
UNIT "P" SECTION 30
T23S-R33E LEA CO. NM



EXISTING ROAD - - - - -

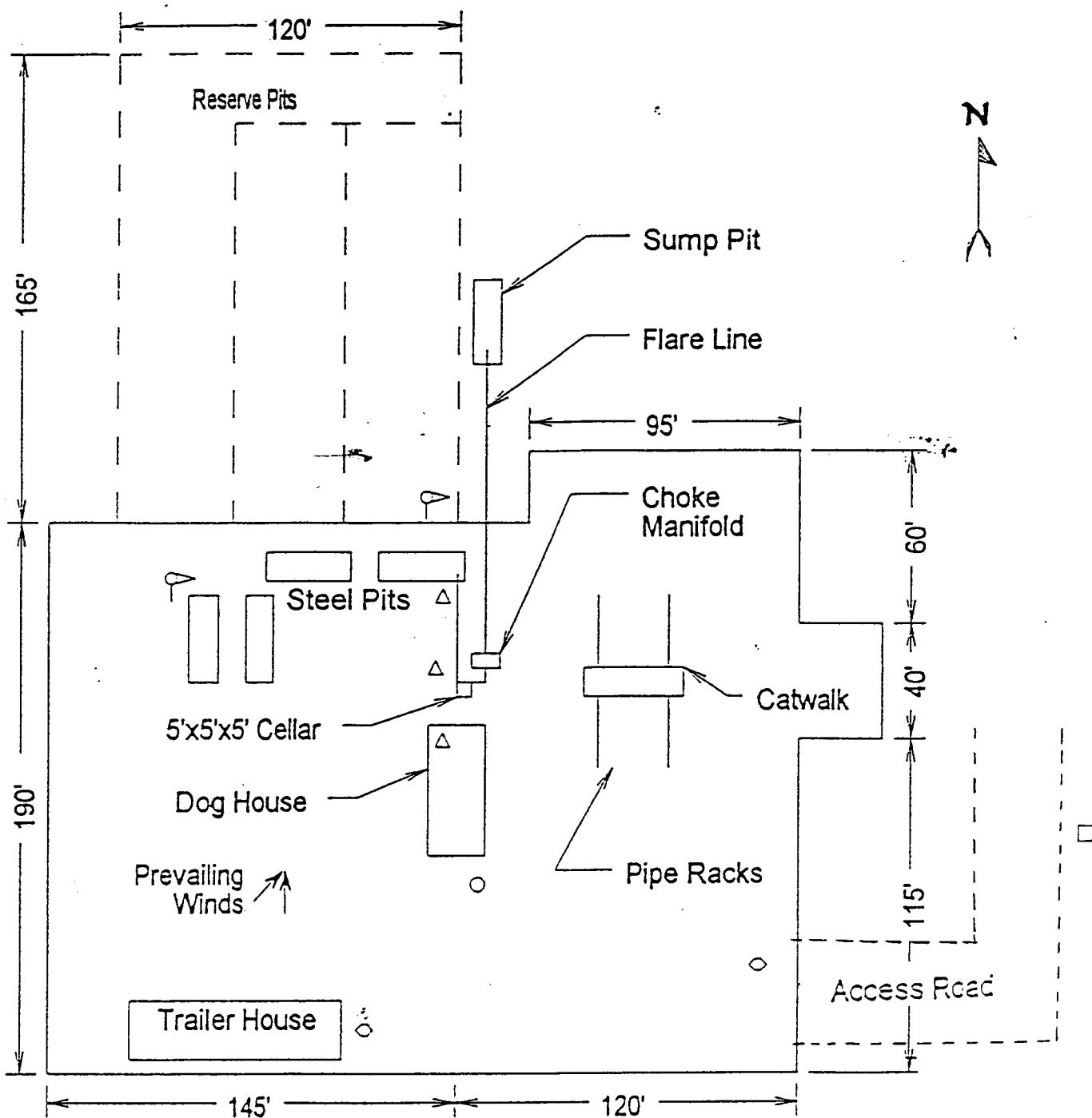
PROPOSED ROAD - - - - -

PROPOSED FLOWLINE

PROPOSED POWERLINE - - - - -

EXHIBIT "C"
TOPOGRAPHIC MAP SHOWING
ROADS & DIRECTIONS TO

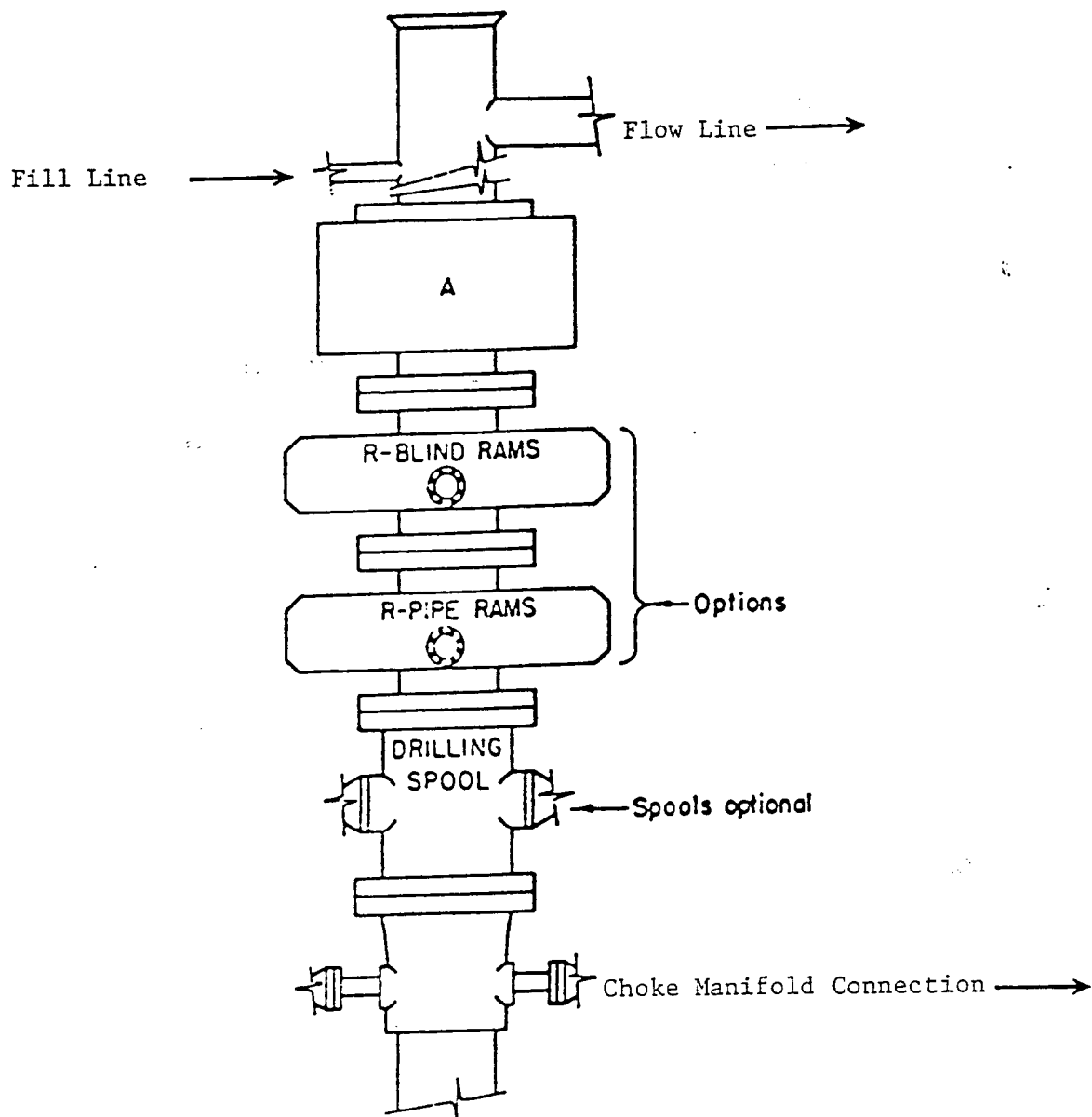
POGO PRODUCING COMPANY
FOXGLOVE "30" FEDERAL # 2
UNIT "P" SECTION 30
T23S-R33E LEA CO. NM



- ⌂ Wind Direction Indicators
(wind sock or streamers)
- △ H2S Monitors
(alarms at bell nipple and shale shaker)
- Briefing Areas
- Remote BOP Closing Unit
- Sign and Condition Flags

EXHIBIT "D"
RIG LAYOUT PLAT

POGO PRODUCING COMPANY
FOXGLOVE "30" FEDERAL # 2
UNIT "P" SECTION 30
T23S-R33E LEA CO. NM



ARRANGEMENT SRRA

1500 Series
5000 PSI WP

EXHIBIT "E"
SKETCH OF B.O.P. TO BE USED ON

POGO PRODUCING COMPANY
FOXGLOVE "30" FEDERAL # 2
UNIT "P" SECTION 30
T23S-R33E LEA CO. NM

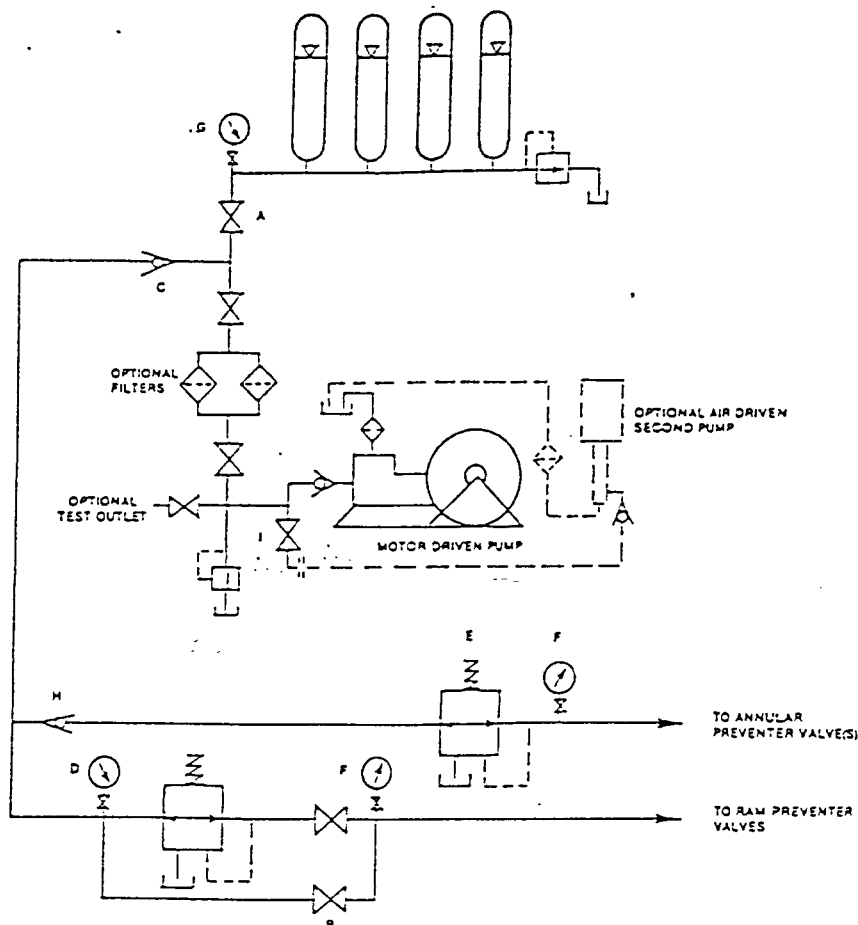


FIGURE K6-1. The schematic sketch of an accumulator system shows required and optional components.

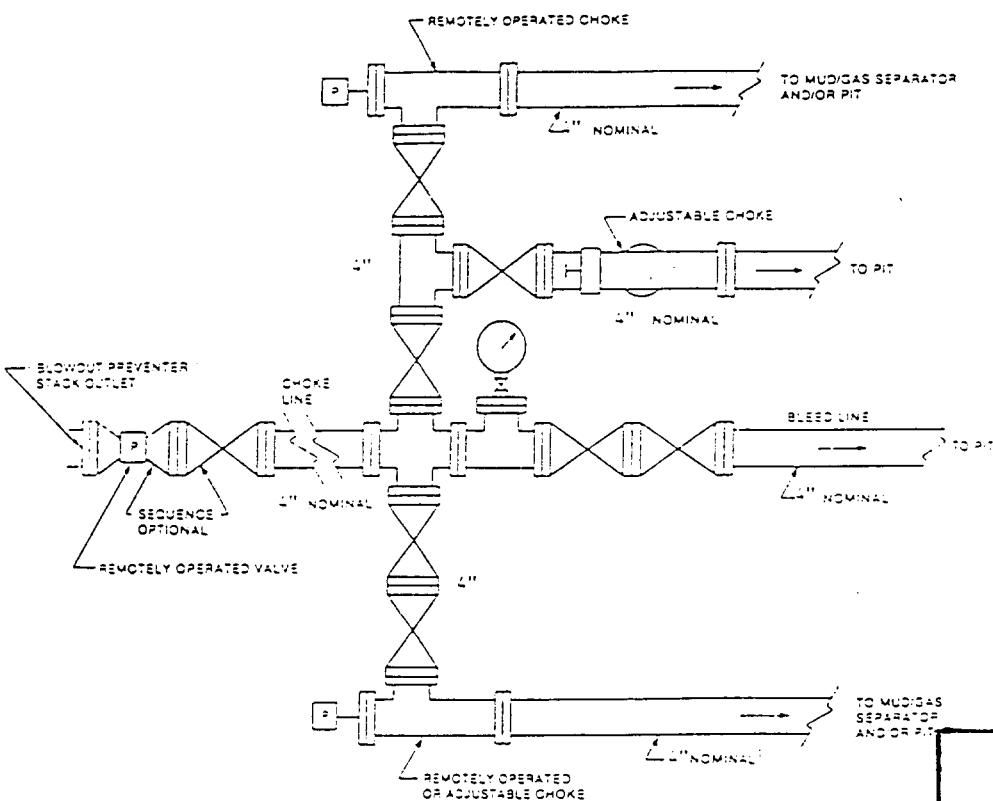


EXHIBIT "E-1"
CHOKE MANIFOLD & CLOSING UNIT

POGO PRODUCING COMPANY
 FOXGLOVE "30" FEDERAL # 2
 UNIT "P" SECTION 30
 T23S-R33E LEA CO. NM

STATEMENT ACCEPTING RESPONSIBILITY FOR OPERATIONS

OPERATOR NAME: POGO PRODUCING COMPANY

ADDRESS: P.O. BOX 10340

CITY, STATE, & ZIP: MIDLAND, TEXAS 79702-7340

The above operator accepts all applicable terms, conditions, stipulations, and restrictions concerning operations conducted on the leased land or portion thereof, as described below.

Lease No: NM-97148

Bond coverage: BLANKET

B.L.M. Bond File No.: WY-0405

RECEIVED
2005 AUG 26 AM 9:30
BUREAU OF LAND MANAGEMENT
ROSENBLUTH

Authorized Signature

Joe T. Janica
Title: Agent

Date: 08/25/05

SPECIAL DRILLING STIPULATIONS

THE FOLLOWING DATA IS REQUIRED ON THE WELL SIGN

Operator's Name Pogo Producing Co. Well Name & No. Foxglove 30 Federal #2
Location 660 F S L & 660 F E L Sec. 30, T. 23 S, R. 33 E.
Lease No. NM-97148 County Lea State New Mexico

The Special stipulations check marked below are applicable to the above described well and approval of this application to drill is conditioned upon compliance with such stipulations in addition to the General Requirements. The permittee should be familiar with the General Requirements, a copy of which is available from a Bureau of Land Management office. EACH PERMITTEE HAS THE RIGHT OF ADMINISTRATIVE APPEAL TO THESE STIPULATIONS PURSUANT TO TITLE 43 CRF 3165.3 AND 3165.4.

This permit is valid for a period of one year from the date of approval or until lease expiration or termination whichever is shorter.

I. SPECIAL ENVIRONMENT REQUIREMENTS

- (X) Lesser Prairie Chicken (stips attached) () Flood plain (stips attached)
() San Simon Swale (stips attached) () Other

II. ON LEASE - SURFACE REQUIREMENTS PRIOR TO DRILLING

(X) The BLM will monitor construction of this drill site. Notify the (X) Carlsbad Field Office at (505) 234-5972 () Hobbs Office (505) 393-3612, at least 3 working days prior to commencing construction.

(X) Roads and the drill pad for this well must be surfaced with 6 inches of compacted caliche.

() All topsoil and vegetation encountered during the construction of the drill site area will be stockpiled and made available for resurfacing of the disturbed area after completion of the drilling operation. Topsoil on the subject location is approximately _____ inches in depth. Approximately _____ cubic yards of topsoil material will be stockpiled for reclamation.

() Other.

III. WELL COMPLETION REQUIREMENTS

() A Communitization Agreement covering the acreage dedicated to the well must be filed for approval with the BLM. The effective date of the agreement must be prior to any sales.

(X) Surface Restoration: If the well is a producer, the reserve pit(s) will be backfilled when dry, and cut-and-fill slopes will be reduced to a slope of 3:1 or less. All areas of the pad not necessary for production must be re-contoured to resemble the original contours of the surrounding terrain, and topsoil must be re-distributed and re-seeded with a drill equipped with a depth indicator (set at depth of ½ inch) with the following seed mixture, in pounds of Pure Live Seed (PLS), per acre.

- | | |
|---|---|
| () A. Seed Mixture 1 (Loamy Sites) | (X) B. Seed Mixture 2 (Sandy Sites) |
| Side Oats Grama (<i>Bouteloua curtipendula</i>) 5.0 | Sand Dropseed (<i>Sporobolus cryptandrus</i>) 1.0 |
| Sand Dropseed (<i>Sporobolus cryptandrus</i>) 1.0 | Sand Lovegrass (<i>Eragrostis trichodes</i>) 1.0 |
| | Plains Bristlegrass (<i>Setaria magrostachya</i>) 2.0 |
| () C. Seed Mixture 3 (Shallow Sites) | () D. Seed Mixture 4 (Gypsum Sites) |
| Side oats Grama (<i>Boute curtipendula</i>) 1.0 | Alkali Sacaton (<i>Sporobolus airoides</i>) 1.0 |
| | Four-Wing Saltbush (<i>Atriplex canescens</i>) 5.0 |

() OTHER SEE ATTACHED SEED MIXTURE

Seeding should be done either late in the fall (September 15 - November 15, before freeze up, or early as possible the following spring to take advantage of available ground moisture.

() Other.

RESERVE PIT CONSTRUCTION STANDARDS

The reserve pit shall be constructed entirely in cut material and lined with 6 mil plastic.

Mineral material extracted during construction of the reserve pit may be used for development of the pad and access road as needed. Removal of any additional material on location must be purchased from BLM.

Reclamation: Reclamation of this type of deep pit will consist of pushing the pit walls into the pit when sufficiently dry to support track equipment. The pit liner is NOT TO BE RUPTURED to facilitate drying; a ten month period after completion of the well is allowed for drying of the pit contents.

The pit area must be contoured to the natural terrain with all contaminated drilling mud buried with at least 3 feet of clean soil. The reclaimed area will then be seeded as specified in this permit.

OPTIONAL PIT CONSTRUCTION STANDARDS

The reserve pit may be constructed in predominantly fill material if:

- (1) Lined as specified above and
- (2) A borrow/caliche/gravel pit can be constructed immediately adjacent to the reserve pit and it capable of containing all reserve pit contents. The mineral material removed in the process can be used for pad and access road construction. However, a material sales contract must be purchased from the BLM prior to removal of the material.

Reclamation of the reserve pit consists of bulldozing all reserve pit contents and contaminants into the borrow pit and covering with a minimum of 3 feet of clean soil material. The entire area must be recontoured, all trash removed, and reseeded as specified in this permit.

CULTURAL

Whether or not an archaeological survey has been completed and notwithstanding that operations are being conducted as approved, the lessee/operator/grantee shall notify the BLM immediately if previously unidentified cultural resources are observed during surface disturbing operations. From the time of the observation, the lessee/operator/grantee shall avoid operations that will result in disturbance to these cultural resources until directed to processed by BLM.

TRASH PIT STIPS

All trash, junk, and other waste material shall be contained in trash cages or bins to prevent scattering and will be removed and deposited in an approved sanitary landfill. Burial on site is not permitted.

PRAIRIE CHICKENS

No surface use is allowed during the following time periods; unless otherwise specified, this stipulation does not apply to operation and maintenance of production facilities.

On the following lands: All of Section 30 T. 23 S., R33 E.

For the purpose of: Protecting Prairie Chickens:

Drilling for oil and gas, and 3-D geophysical exploration operations will not be allowed in Lesser Prairie Chicken Habitat during the period of March 15 through June 15, each year. During that period, other activities that produce noise or involve human activity, such as the maintenance of oil and gas facilities, geophysical exploration other than 3-D operations, and pipeline, road, and well pad construction, will be allowed except between 3:00 a.m. and 9:00 a.m. The 3:00 a.m. and 9:00 a.m. restriction will not apply to normal, around-the-clock operations, such as venting, flaring, or pumping, which do not require a human presence during the period. Additionally, no new drilling will be allowed within up to 200 meters of leks known at the time of permitting. Normal vehicle use on existing roads will not be restricted. Exhaust noise from pump jack engines must be muffled or otherwise controlled so as not to exceed 75 db measured at 30 feet from the source of the noise.

Bureau of Land Management
Carlsbad Field Office

SENM-S-22
December 1997

CONDITIONS OF APPROVAL - DRILLING

Operator's Name: POGO Producing Company
Well Name & No: FoxGlove "30" Federal No 02
Location: Surface: 660' FSL & 660' FEL, Sec.30, T. 23 S. R. 33 E.
Lease: NMNM 97148
Lea County, New Mexico

.....

I. DRILLING OPERATIONS REQUIREMENTS:

1. The Bureau of Land Management (BLM) is to be notified at the Roswell Field Office, 2909 West Second St., Roswell, NM 88201, (505) 627-0272 for wells in Chaves and Roosevelt Counties; the Carlsbad Field Office, 620 East Greene St., Carlsbad, NM 88220, (505) 361-2822 for wells in Eddy County; and the Hobbs Field Station, 414 West Taylor, Hobbs NM 88240, (505) 393-3612 for wells in Lea County, in sufficient time for a representative to witness:

A. Spudding

B. Cementing casing: 13 3/8 inch; 8 5/8 inch; 5 1/2 inch.

C. BOP Tests

2. A Hydrogen Sulfide (H₂S) Drilling Plan is not required for this wellbore.

3. Unless the production casing has been run and cemented or the well has been properly plugged, the drilling rig shall not be removed from over the hole without prior approval.

4. Submit a Sundry Notice (Form 3160-5, one original and five copies) for each casing string, describing the casing and cementing operations. Include pertinent information such as; spud date, hole size, casing (size, weight, grade and thread type), cement (type, quantity and top), water zones and problems or hazards encountered. The Sundry shall be submitted within 15 days of completion of each casing string. The reports may be combined into the same Sundry if they fall within the same 15 day time frame.

5. The API No. assigned to the well by NMOCD shall be included on the subsequent report of setting the first casing string.

II. CASING:

1. The 13 3/8 inch shall be set at 1230 Feet with cement circulated to the surface. If cement does not circulate to the surface the appropriate BLM office shall be notified and a temperature survey or cement bond log shall be run to verify the top of the cement. Remedial cementing shall be completed prior to drilling out that string.

2. The minimum required fill of cement behind the 8 5/8 inch Intermediate casing is to circulate to surface.

3. The minimum required fill of cement behind the 5 1/2 inch Production casing is to tie back to 8 5/8 inch shoe by at least 200 ft.

III. PRESSURE CONTROL:

1. All BOP systems and related equipment shall comply with well control requirements as described in Onshore Oil and Gas Order No. 2. The BOP and related equipment shall be installed and operational before drilling below the 13 3/8 inch casing shoe and shall be tested as described in Onshore Order No. 2. Any equipment failing to test satisfactorily shall be repaired or replaced.

2. Minimum working pressure of the blowout preventer and related equipment (BOPE) shall be 3 M psi.

3. The appropriate BLM office shall be notified in sufficient time for a representative to witness the test.

- The test shall be done by an independent service company
- The results of the test shall be reported to the appropriate BLM office.
- Testing fluid must be water or an appropriate clear liquid suitable for sub-freezing temperatures.
- Use of drilling mud for testing is not permitted since it can mask small leaks.
- Testing must be done in safe workman-like manner. Hard line connections shall be required.
- Both low pressure and high pressure testing of BOPE is required.

BLM Serial Number: NM-97148
Company Reference: Pogo Producing Co.
Well No. & Name: Foxglove 30 Federal #2

STANDARD STIPULATIONS FOR PERMANENT RESOURCE ROADS
CARLSBAD FIELD OFFICE

A copy of the grant and attachments, including stipulations and map, will be on location during construction. BLM personnel may request to view a copy of your permit during construction to ensure compliance with all stipulations.

The holder/grantee/permittee shall hereafter be identified as the holder in these stipulations. The Authorized Officer is the person who approves the Application for Permit to Drill (APD) and/or Right-of-Way (ROW).

GENERAL REQUIREMENTS

A. The holder shall indemnify the United States against any liability for damage to life or property arising from the occupancy or use of public lands under this grant.

B. The holder shall comply with all applicable Federal laws and regulations existing or hereafter enacted or promulgated. In any event, the holder shall comply with the Toxic Substances Control Act of 1976, as amended (15 U.S.C. 2601, *et. seq.*) with regard to any toxic substances that are used, generated by or stored on the right-of-way or on facilities authorized by this grant. (See 40 CFR, Part 702-799 and especially, provisions on polychlorinated biphenyls, 40 CFR 761.1-761.193.) Additionally, any release of toxic substances (leaks, spills, etc.) in excess of the reportable quantity established by 40 CFR, Part 117 shall be reported as required by the Comprehensive Environmental Response, Compensation and Liability Act, Section 102b. A copy of any report required or requested by any Federal agency or State government as a result of a reportable release or spill of any toxic substances shall be furnished to the Authorized Officer concurrent with the filing of the reports to the involved Federal agency or State government.

C. The holder agrees to indemnify the United States against any liability arising from the release of any hazardous substance or hazardous waste (as these terms are defined in the Comprehensive Environmental Response, Compensation and Liability Act of 1980, 42 U.S.C. 9601, *et. seq.* or the Resource Conservation and Recovery Act, 42 U.S.C. 6901, *et. seq.*) on the right-of-way (unless the release or threatened release is wholly unrelated to the right-of-way holder's activity on the right-of-way). This agreement applies without regard to whether a release is caused by the holder, its agent, or unrelated third parties.

D. If, during any phase of the construction, operation, maintenance, or termination of the road, any oil or other pollutant should be discharged, impacting Federal lands, the control and total removal, disposal, and cleaning up of such oil or other pollutant, wherever found, shall be the responsibility of the holder, regardless of fault. Upon failure of the holder to control, dispose of, or clean up such discharge on or affecting Federal lands, or to repair all damages to Federal lands resulting there from, the Authorized Officer may take such measures as deemed necessary to control and cleanup the discharge and restore the area, including, where appropriate, the aquatic environment and fish and wildlife habitats, at the full expense of the holder. Such action by the Authorized Officer shall not relieve the holder of any liability or responsibility.

E. The holder shall minimize disturbance to existing fences and other improvements on public domain surface. The holder is required to promptly repair improvements to at least their former state. Functional use of these improvements will be maintained at all times.

The holder will make a documented good-faith effort to contact the owner of any improvements prior to disturbing them. When necessary to pass through a fence line, the fence shall be braced on both sides of the passageway prior to cutting of the fence.

F. The Holder shall ensure that the entire right-of-way, including the driving surface, ditching and drainage control structures, road verges and any construction sites or zones, will be kept free of the following plant species: Malta starthistle, African rue, Scotch thistle and salt cedar.

Holder agrees to comply with the following stipulations:

1. ROAD WIDTH AND GRADE

The road will have a driving surface of 14 feet (all roads shall have a minimum driving surface of 12 feet, unless local conditions dictate a different width). The maximum grade is 10 percent unless the box below is checked. Maximum width of surface disturbance from construction will be 30 feet.

☐ Those segments of road where grade is in excess of 10% for more than 300 feet shall be designed by a professional engineer.

2. CROWNING AND DITCHING

Crowning with materials on site and ditching on one side of the road on the uphill side will be required. The road cross-section will conform to the cross section diagrams in Figure 1. If conditions dictate, ditching may be required for both sides of the road; if local conditions permit, a flat-bladed road may be considered (if these conditions exist, check the appropriate box below). The crown shall have a grade of approximately 2% (i.e., 1" crown on a 12' wide road).

☒ Ditching will be required on both sides of the roadway as shown on the attached map or as staked in the field.

☐ Flat-blading is authorized on segment(s) delineated on the attached map.

3. DRAINAGE

Drainage control shall be ensured over the entire road through the use of borrow ditches, outsloping, insloping, natural rolling topography, lead-off (turnout) ditches, culverts, and/or drainage dips.

A. All lead-off ditches shall be graded to drain water with a 1 percent minimum to 3 percent maximum ditch slope. The spacing interval for lead-off ditches shall be determined according to the following table, but may be amended depending upon existing soil types and centerline road slope (in %):

SPACING INTERVAL FOR TURNOUT DITCHES

Percent slope	Spacing interval
0% - 4%	400' - 150'
4% - 6%	250' - 125'
6% - 8%	200' - 100'
8% - 10%	150' - 75'

A typical lead-off ditch has a minimum depth of 1 foot below and a berm 6 inches above natural ground level. The berm will be on the down-slope side of the lead-off ditch. The ditch end will tie into vegetation whenever possible.

For this road the spacing interval for lead-off ditches shall be at

☒ 400 foot intervals.

☐ _____ foot intervals.

☐ locations staked in the field as per spacing intervals above.

☐ locations delineated on the attached map.

B. Culvert pipes shall be used for cross drains where drainage dips or low water crossings are not feasible. The minimum culvert diameter must be 18 inches. Any culvert pipe installed shall be of sufficient diameter to pass the anticipated flow of water. Culvert location and required diameter are shown on the attached map (Further details can be obtained from the Roswell District Office or the appropriate Resource Area Office).

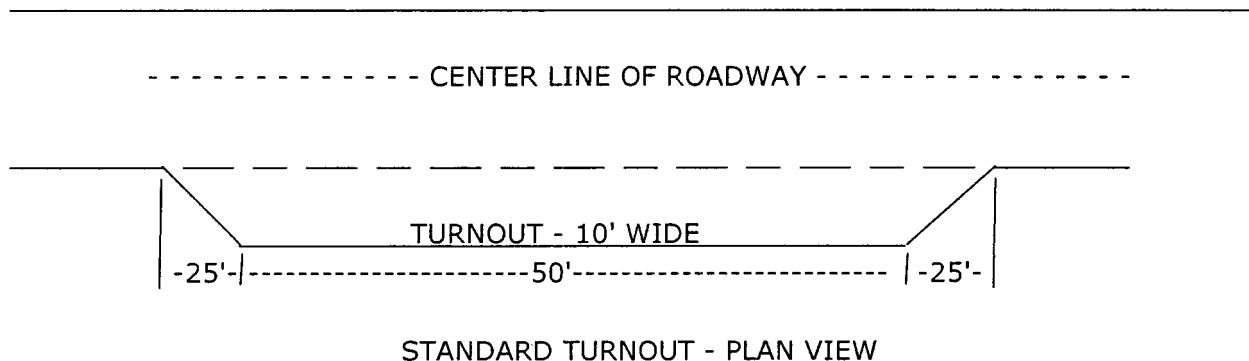
C. On road slopes exceeding 2%, drainage dips shall drain water into an adjacent lead-off ditch. Drainage dip location and spacing shall be determined by the formula:

$$\text{spacing interval} = \frac{400'}{\text{road slope in \%}} + 100'$$

Example: 4% slope: spacing interval = $\frac{400}{4} + 100 = 200$ feet

4. TURNOUTS

Unless otherwise approved by the Authorized Officer, vehicle turnouts will be required. Turnouts will be located at 2000-foot intervals, or the turnouts will be intervisible, whichever is less. Turnouts will conform to the following diagram:



5. SURFACING

Surfacing of the road or those portions identified on the attached map may, at the direction of the Authorized Officer, be required, if necessary, to maintain traffic within the right-of-way with caliche, gravel, or other surfacing material which shall be approved by the Authorized Officer. When surfacing is required, surfacing materials will be compacted to a minimum thickness of six inches with caliche material. The width of surfacing shall be no less than the driving surface. Prior to using any mineral materials from an existing or proposed Federal source, authorization must be obtained from the Authorized Officer.

A sales contract for the removal of mineral materials (caliche, sand, gravel, fill dirt, etc.) from an authorized pit, site, or on location must be obtained from the BLM prior to using any such mineral material from public lands. Contact the BLM solid minerals staff for the various options to purchase mineral material.

6. CATTLEGUARDS

Where used, all cattleguard grids and foundation designs and construction shall meet the American Association of State Highway and Transportation Officials (AASHTO) Load Rating H-20, although AASHTO U-80 rated grids shall be required where heavy loads (exceeding H-20 loading), are anticipated (See BLM standard drawings for cattleguards). Cattleguard grid length shall not be less than 8 feet and width of not less than 14 feet. A wire gate (16-foot minimum width) will be provided on one side of the cattleguard unless requested otherwise by the surface user.

7. MAINTENANCE

The holder shall maintain the road in a safe, usable condition. A maintenance program shall include, but not be limited to blading, ditching, culvert installation, culvert cleaning, drainage installation, cattleguard maintenance, and surfacing.

8. PUBLIC ACCESS

Public access along this road will not be restricted by the holder without specific written approval being granted by the Authorized Officer. Gates or cattleguards on public lands will not be locked or closed to public use unless closure is specifically determined to be necessary and is authorized in writing by the Authorized Officer.

9. CULTURAL RESOURCES

Any cultural and/or paleontological resource (historic or prehistoric site or object) discovered by the holder, or any person working on the holder's behalf, on public or Federal land shall be immediately reported to the authorized officer. The holder shall suspend all operations in the immediate area of such discovery until written authorization to proceed is issued by the authorized officer. An evaluation of the discovery will be made by the authorized officer to determine appropriate actions to prevent the loss of significant cultural or scientific values. The holder will be responsible for the cost of evaluation and any decision as to the proper mitigation measures will be made by the authorized officer after consulting with the holder.

10. SPECIAL STIPULATIONS:

BLM Serial Number: NM-97148
Company Reference: Pogo Producing Co.
Well No. & Name: Foxglove 30 Federal #2

STANDARD STIPULATIONS FOR SURFACE INSTALLED PIPELINES

Holder agrees to comply with the following stipulations to the satisfaction of the Authorized Officer:

1. The holder shall indemnify the United States against any liability for damage to life or property arising from the occupancy or use of public lands under this grant.
2. The holder shall comply with all applicable Federal laws and regulations existing or hereafter enacted or promulgated. In any event, the holder shall comply with the Toxic Substances Control Act of 1976 as amended, 15 USC 2601 et seq. (1982) with regards to any toxic substances that are used, generated by or stored on the right-of-way or on facilities authorized under this right-of-way grant. (See 40 CFR, Part 702-799 and especially, provisions on polychlorinated biphenyls, 40 CFR 761.1-761.193.) Additionally, any release of toxic substances (leaks, spills, etc.) in excess of the reportable quantity established by 40 CFR, Part 117 shall be reported as required by the Comprehensive Environmental Response, Compensation, and Liability Act, section 102b. A copy of any report required or requested by any Federal agency or State government as a result of a reportable release or spill of any toxic substances shall be furnished to the authorized officer concurrent with the filing of the reports to the involved Federal agency or State government.
3. The holder agrees to indemnify the United States against any liability arising from the release of any hazardous substance or hazardous waste (as these terms are defined in the Comprehensive Environmental Response, Compensation and Liability Act of 1980, 42 U.S.C. 9601, et seq. or the Resource Conservation and Recovery Act, 42 U.S.C. 6901, et seq.) on the Right-of-Way (unless the release or threatened release is wholly unrelated to activity of the Right-of-Way holder's activity on the Right-of-Way), or resulting from the activity of the Right-of-Way holder on the Right-of-Way. This agreement applies without regard to whether a release is caused by the holder, its agent, or unrelated third parties.
4. The holder shall be liable for damage or injury to the United States to the extent provided by 43 CFR Sec. 2883.1-4. The holder shall be held to a standard of strict liability for damage or injury to the United States resulting from pipe rupture, fire, or spills caused or substantially aggravated by any of the following within the right-of-way or permit area:
 - a. Activities of the holder including, but not limited to construction, operation, maintenance, and termination of the facility.
 - b. Activities of other parties including, but not limited to:
 - (1) Land clearing.
 - (2) Earth-disturbing and earth-moving work.

- (3) Blasting.
- (4) Vandalism and sabotage.

c. Acts of God.

The maximum limitation for such strict liability damages shall not exceed one million dollars (\$1,000,000) for any one event, and any liability in excess of such amount shall be determined by the ordinary rules of negligence of the jurisdiction in which the damage or injury occurred.

This section shall not impose strict liability for damage or injury resulting primarily from an act of war or from the negligent acts or omissions of the United States.

5. If, during any phase of the construction, operation, maintenance, or termination of the pipeline, any oil, salt water, or other pollutant should be discharged from the pipeline system, impacting Federal lands, the control and total removal, disposal, and cleaning up of such oil, salt water, or other pollutant, wherever found, shall be the responsibility of the holder, regardless of fault. Upon failure of the holder to control, dispose of, or clean up such discharge on or affecting Federal lands, or to repair all damages resulting therefrom, on the Federal lands, the Authorized Officer may take such measures as he deems necessary to control and clean up the discharge and restore the area, including, where appropriate, the aquatic environment and fish and wildlife habitats, at the full expense of the holder. Such action by the Authorized Officer shall not relieve the holder of any responsibility as provided herein.

6. All construction and maintenance activity will be confined to the authorized right-of-way width of 25 feet.

7. No blading or clearing of any vegetation will be allowed unless approved in writing by the Authorized Officer.

8. The holder shall install the pipeline on the surface in such a manner that will minimize suspension of the pipeline across low areas in the terrain. In hummocky or dune areas, the pipeline will be "snaked" around hummocks and dunes rather than suspended across these features.

9. The pipeline shall be buried with a minimum of 24 inches under all roads, "two-tracks," and trails. Burial of the pipe will continue for 20 feet on each side of each crossing. The condition of the road, upon completion of construction, shall be returned to at least its former state with no bumps or dips remaining in the road surface.

10. The holder shall minimize disturbance to existing fences and other improvements on public lands. The holder is required to promptly repair improvements to at least their former state. Functional use of these improvements will be maintained at all times. The holder will contact the owner of any improvements prior to disturbing them. When necessary to pass through a fence line, the fence shall be braced on both sides of the passageway prior to cutting of the fence. No permanent gates will be allowed unless approved by the Authorized Officer.

11. In those areas where erosion control structures are required to stabilize soil conditions, the holder will install such structures as are suitable for the specific soil conditions being encountered and which are in accordance with sound resource management practices.

12. Excluding the pipe, all above-ground structures not subject to safety requirement shall be painted by the holder to blend with the natural color of the landscape. The paint used shall be a color which simulates "Standard Environmental Colors" – **Shale Green**, Munsell Soil Color No. 5Y 4/2; designated by the Rocky Mountain Five State Interagency Committee.

13. The pipeline will be identified by signs at the point of origin and completion of the right-of-way and at all road crossings. At a minimum, signs will state the holder's name, BLM serial number, and the product being transported. Signs will be maintained in a legible condition for the life of the pipeline.

14. The holder shall not use the pipeline route as a road for purposes other than routine maintenance as determined necessary by the Authorized Officer in consultation with the holder. The holder will take whatever steps are necessary to ensure that the pipeline route is not used as a roadway.

15. Any cultural and/or paleontological resource (historic or prehistoric site or object) discovered by the holder, or any person working on his behalf, on public or Federal land shall be immediately reported to the authorized officer. Holder shall suspend all operations in the immediate area of such discovery until written authorization to proceed is issued by the authorized officer. An evaluation of the discovery will be made by the authorized officer to determine appropriate cultural or scientific values. The holder will be responsible for the cost of evaluation and any decision as to proper mitigation measures will be made by the authorized officer after consulting with the holder.

16. Special Stipulations:

(March 1989)

BLM Serial Number: NM-97148
Company Reference: Pogo Producing Co.
Well No. & Name: Foxglove 30 Federal #2

STANDARD STIPULATIONS FOR OVERHEAD ELECTRIC DISTRIBUTION LINES

Holder agrees to comply with the following stipulations to the satisfaction of the Authorized Officer:

1. The holder shall indemnify the United States against any liability for damage to life or property arising from the occupancy or use of public lands under this grant.
2. The holder shall comply with all applicable Federal laws and regulations existing or hereafter enacted or promulgated. In any event, the holder shall comply with the Toxic Substances Control Act of 1976 as amended, 15 USC 2601 et seq. (1982) with regards to any toxic substances that are used, generated by or stored on the right-of-way or on facilities authorized under this right-of-way grant. (See 40 CFR, Part 702-799 and especially, provisions on polychlorinated biphenyls, 40 CFR 761.1-761.193.) Additionally, any release of toxic substances (leaks, spills, etc.) in excess of the reportable quantity established by 40 CFR, Part 117 shall be reported as required by the Comprehensive Environmental Response, Compensation, and Liability Act, section 102b. A copy of any report required or requested by any Federal agency or State government as a result of a reportable release or spill of any toxic substances shall be furnished to the authorized officer concurrent with the filing of the reports to the involved Federal agency or State government.
3. The holder agrees to indemnify the United States against any liability arising from the release of any hazardous substance or hazardous waste (as these terms are defined in the Comprehensive Environmental Response, Compensation and Liability Act of 1980, 42 U.S.C. 9601, et seq. or the Resource Conservation and Recovery Act, 42 U.S.C. 6901, et seq.) on the Right-of-Way (unless the release or threatened release is wholly unrelated to the Right-of-Way holder's activity on the Right-of-Way), or resulting from the activity of the Right-of-Way holder on the Right-of-Way. This agreement applies without regard to whether a release is caused by the holder, its agent, or unrelated third parties.
4. There will be no clearing or blading of the right-of-way unless otherwise agreed to in writing by the Authorized Officer.
5. Powerlines shall be constructed in accordance to standards outlined in "Suggested Practices for Raptor Protection on Powerlines, " Raptor Research Foundation, Inc., 1981. The holder shall assume the burden and expense of proving that pole designs not shown in the above publication are "raptor safe." Such proof shall be provided by a raptor expert approved by the Authorized Officer. The BLM reserves the right to require modification or additions to all powerline structures placed on this right-of-way, should they be necessary to ensure the safety of large perching birds. Such modifications and/or additions shall be made by the holder without liability or expense to the United States.

6. The holder shall minimize disturbance to existing fences and other improvements on public lands. The holder is required to promptly repair improvements to at least their former state. Functional use of these improvements will be maintained at all times. The holder will contact the owner of any improvements prior to disturbing them. When necessary to pass through a fence line, the fence shall be braced on both sides of the passageway prior to cutting the fence. No permanent gates will be allowed unless approved by the Authorized Officer.

7. The BLM serial number assigned to this authorization shall be posted in a permanent, conspicuous manner where the power line crosses roads and at all serviced facilities. Numbers will be at least two inches high and will be affixed to the pole nearest the road crossing and at the facilities served.

8. Upon cancellation, relinquishment, or expiration of this grant, the holder shall comply with those abandonment procedures as prescribed by the Authorized Officer.

9. All surface structures (poles, lines, transformers, etc.) shall be removed within 180 days of abandonment, relinquishment, or termination of use of the serviced facility or facilities or within 180 days of abandonment, relinquishment, cancellation, or expiration of this grant, whichever comes first. This will not apply where the power line extends service to an active, adjoining facility or facilities.

10. Any cultural and/or paleontological resource (historic or prehistoric site or object) discovered by the holder, or any person working on his behalf, on public or Federal land shall be immediately reported to the Authorized Officer. Holder shall suspend all operations in the immediate area of such discovery until written authorization to proceed is issued by the Authorized Officer. An evaluation of the discovery will be made by the Authorized Officer to determine appropriate actions to prevent the loss of significant cultural or scientific values. The holder will be responsible for the cost of evaluation and any decision as to proper mitigation measures will be made by the Authorized Officer after consulting with the holder.

11. Special Stipulations:

District I
1625 N. French Dr., Hobbs, NM 88240
District II
1501 W. Grand Avenue, Artesia, NM 88210
District III
1000 Rio Brazos Road, Aztec, NM 87410
District IV
1220 S. St. Francis Dr., Santa Fe, NM 87505

State of New Mexico
Energy Minerals and Natural Resources

Form C-144
June 1, 2004

Oil Conservation Division
1220 South St. Francis Dr.
Santa Fe, NM 87505

For drilling and production facilities, submit to appropriate NMOCD District Office.
For downstream facilities, submit to Santa Fe office

Pit or Below-Grade Tank Registration or Closure

Is pit or below-grade tank covered by a "general plan"? Yes ☐ No ☒

Type of action: Registration of a pit or below-grade tank ☒ Closure of a pit or below-grade tank ☐

Operator: Pogo Producing Company Telephone: 432-685-8100 e-mail address: wrightc@pogoproducing.com
Address: P. O. Box 10340, Midland, TX 79702-7340
Facility or well name: Foxglove 30 Fed #2 API #: 30-025-37459 U/L or Qtr/Qtr P Sec 30 T 23S R 33E
County: Lea Latitude 32:16:12.60N Longitude 103:36:16.34W NAD: 1927 ☒ 1983 ☐
Surface Owner: Federal ☒ State ☐ Private ☐ Indian ☐

Pit Type: Drilling <input checked="" type="checkbox"/> Production <input type="checkbox"/> Disposal <input type="checkbox"/> Workover <input type="checkbox"/> Emergency <input type="checkbox"/> Lined <input checked="" type="checkbox"/> Unlined <input type="checkbox"/> Liner type: Synthetic <input checked="" type="checkbox"/> Thickness <u>12</u> mil Clay <input type="checkbox"/> Pit Volume <u>16000</u> bbl	Below-grade tank Volume: _____ bbl Type of fluid: _____ Construction material: _____ Double-walled, with leak detection? Yes <input type="checkbox"/> If not, explain why not. _____
Depth to ground water (vertical distance from bottom of pit to seasonal high water elevation of ground water.)	Less than 50 feet (20 points) 50 feet or more, but less than 100 feet (10 points) 100 feet or more X (0 points) 0
Wellhead protection area: (Less than 200 feet from a private domestic water source, or less than 1000 feet from all other water sources.)	Yes (20 points) No X (0 points) 0
Distance to surface water: (horizontal distance to all wetlands, playas, irrigation canals, ditches, and perennial and ephemeral watercourses.)	Less than 200 feet (20 points) 200 feet or more, but less than 1000 feet (10 points) 1000 feet or more X (0 points) 0
Ranking Score (Total Points) 0	

If this is a pit closure: (1) Attach a diagram of the facility showing the pit's relationship to other equipment and tanks. (2) Indicate disposal location: (check the onsite box if you are burying in place) onsite ☐ offsite ☐ If offsite, name of facility _____. (3) Attach a general description of remedial action taken including remediation start date and end date. (4) Groundwater encountered: No ☐ Yes ☐ If yes, show depth below ground surface _____ ft. and attach sample results. (5) Attach soil sample results and a diagram of sample locations and excavations.

Additional Comments:

I hereby certify that the information above is true and complete to the best of my knowledge and belief. I further certify that the above described pit or below-grade tank has been/will be constructed or closed according to NMOCD guidelines ☒ a general permit ☐, or an (attached) alternative OCD-approved plan ☐.

Date: 08/19/05

Printed Name/Title Cathy Wright, Sr. Eng Tech

Signature Cathy Wright

Your certification and NMOCD approval of this application/closure does not relieve the operator of liability should the contents of the pit or tank contaminate ground water or otherwise endanger public health or the environment. Nor does it relieve the operator of its responsibility for compliance with any other federal, state, or local laws and/or regulations.

Approval:

Printed Name/Title _____

Signature [Signature]

Date: _____

PETROLEUM ENGINEER

SEP 19 2005



Water Resources

Data Category:

Site Information

Geographic Area:

New Mexico

go

Site Map for New Mexico

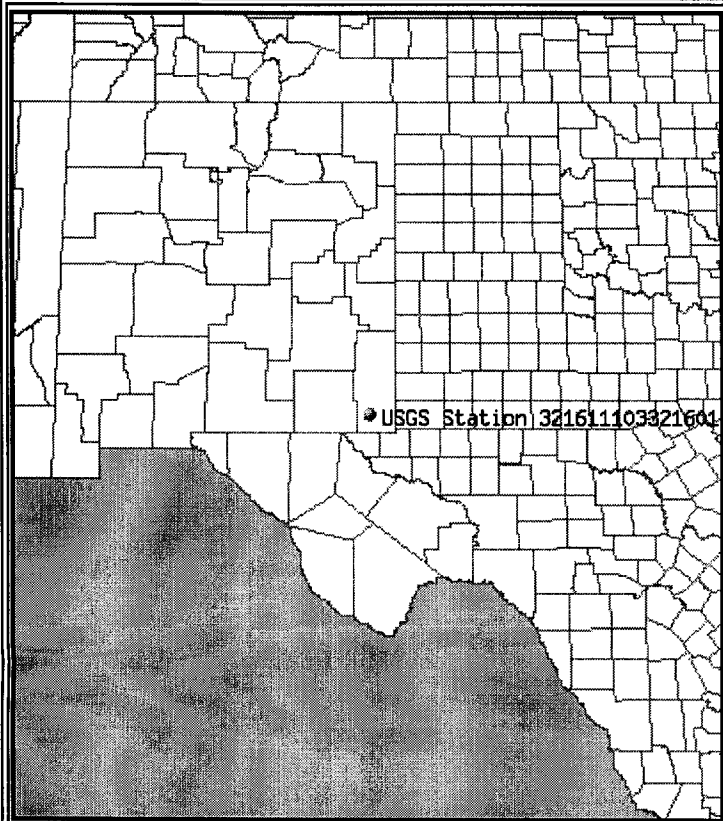
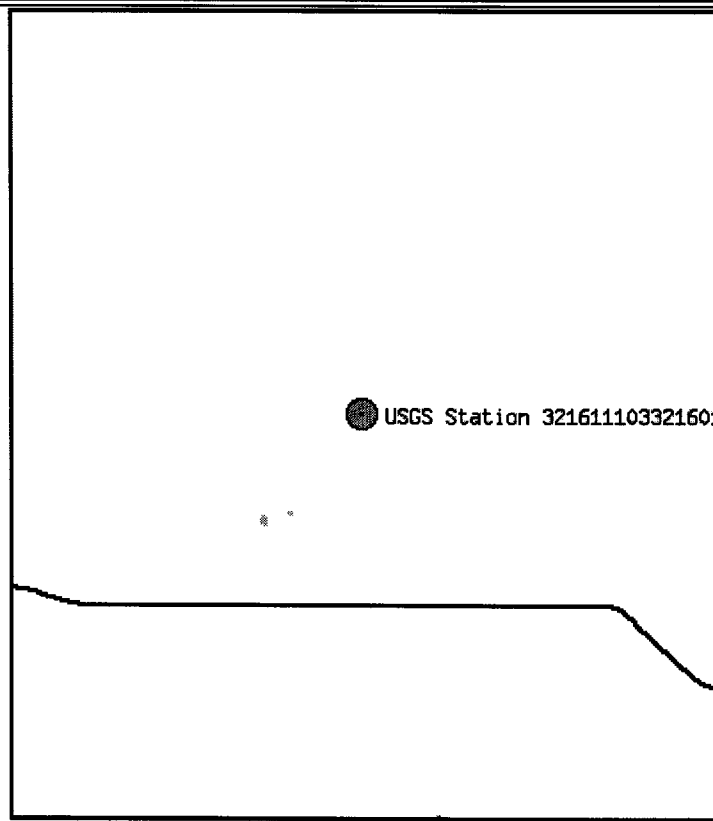
USGS 321611103321601 23S.33E.26.42100

Available data for this site

site map

GO

Lea County, New Mexico
Hydrologic Unit Code 13070007
Latitude 32°16'11", Longitude 103°32'16" NAD27
Gage datum 3,644.00 feet above sea level NGVD29

Location of the site in New Mexico.**Site map.**

ZOOM IN 2X, 4X, 6X, 8X, or ZOOM OUT 2X, 4X, 6X, 8X.

Maps are generated by US Census Bureau TIGER Mapping Service.

Questions about data [New Mexico NWISWeb Data Inquiries](#)
Feedback on this website [New Mexico NWISWeb Maintainer](#)
NWIS Site Inventory for New Mexico: Site Map
<http://waterdata.usgs.gov/nm/nwis/nwismap?>

[Top](#)
[Explanation of terms](#)

Retrieved on 2005-08-19 15:10:09 EDT
Department of the Interior, U.S. Geological Survey
USGS Water Resources of New Mexico
[Privacy Statement](#) || [Disclaimer](#) || [Accessibility](#) || [FOIA](#)
1.07 1.07 nadww01



Water Resources

Data Category:

Ground Water

Geographic Area:

New Mexico

go

Ground-water levels for New Mexico

Search Results -- 1 sites found

Search Criteria

site_no list =	• 321611103321601
----------------	-------------------

[Save file of selected sites to local disk for future upload](#)
USGS 321611103321601 23S.33E.26.42100

Available data for this site

Ground-water: Levels

GO

Lea County, New Mexico

Hydrologic Unit Code 13070007

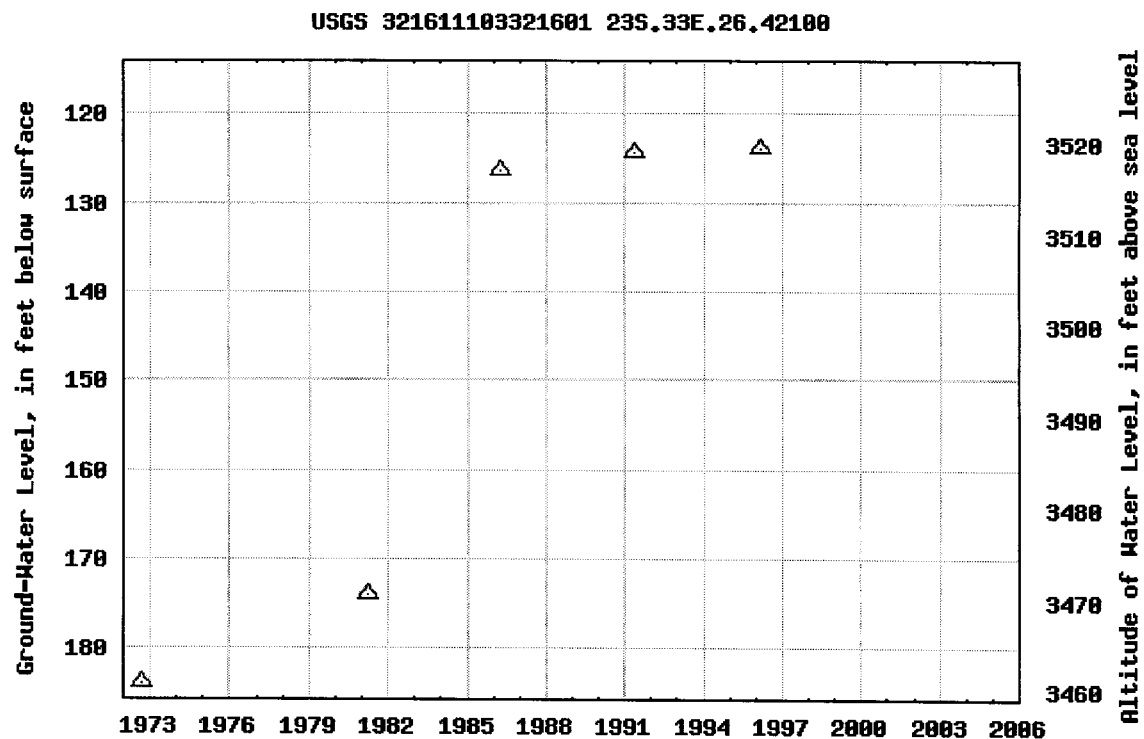
Latitude 32°16'11", Longitude 103°32'16" NAD27

Gage datum 3,644.00 feet above sea level NGVD29

The depth of the well is 190 feet below land surface.

This well is completed in CHINLE FORMATION (231CHNL)

Output formats

[Table of data](#)[Tab-separated data](#)[Graph of data](#)[Reselect period](#)

Breaks in the plot represent a gap of at least one calendar year between two consecutive points.

[Download a presentation-quality graph](#)

Questions about data [New Mexico NWISWeb Data Inquiries](#)
 Feedback on this website [New Mexico NWISWeb Maintainer](#)

[Top](#)
[Explanation of terms](#)

Great Circle Calculator.

By Ed Williams

You need Javascript enabled if you want this page to do anything useful! For Netscape, it's under Options/Network Preferences/Languages.

Compute true course and distance between points.

Enter lat/lon of points, select distance units and earth model and click "compute". Lat/lons may be entered in DD.DD, DD:MM.MM or DD:MM:SS.SS formats.

Note that if either point is very close to a pole, the course may be inaccurate, because of its extreme sensitivity to position and inevitable rounding error.

Input Data

Lat1		Lon1	
32:16:11	N	103:32:16	W
Lat2		Lon2	
32:16:12.6	N	103:36:16.34	W

Output

Course 1-2	Course 2-1	Distance
270.468921	90.4332773	3.38706441

Distance Units: Earth model:

Compute lat/lon given radial and distance from a known point

Enter lat/lon of initial point, true course and distance. Select distance units and earth model and click "compute". Lat/lons may be entered in DD.DD, DD:MM.MM or DD:MM:SS.SS formats.

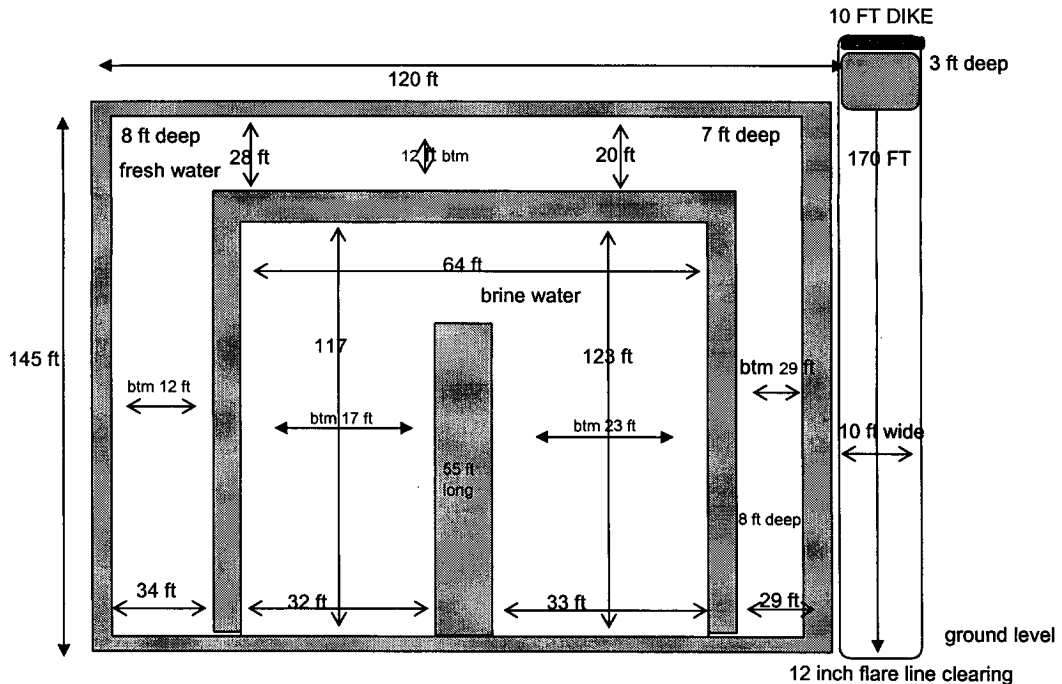
Note that the starting point cannot be a pole.

Input data

Lat1		Lon1	
0:00.00	N	0:00.00	W
Course 1-2		Distance 1-2	
360		0.0	

POGO Producing Company **Foxglove 30 Federal #2** **Approximate Pit Dimensions**

P/30/23S/33E, Lea County, New Mexico



PIT NOTES:

Pit will be lined with 12 mil Black plastic w/ UV protection.

Pit walls are 6 ft to 8 ft wide.

Pit is 8 ft deep below ground level plus 2 ft walls

Pit walls are 2 ft above ground level.

Caliches mined from pit used to make Well Pad.

Fresh Water volume to ground level = \pm 7950 bbls

Brine Water volume to ground level = \pm 7730 bbls

12 inch Flare line laid on gradual descending graded ROW away from rig to avoid fluid trapping

Fresh water well = (Nad 27) 32° 16' 11" N & 103° 32' 16" W "Published data"

This well produces from a depth greater than 50 ft.

Pit equals approx 16000 bbls