

N.M. Oil Cons. DIV-Dist. 2  
1301 W. Grand Avenue  
Artesia, NM 88210

UNITED STATES  
DEPARTMENT OF THE INTERIOR  
BUREAU OF LAND MANAGEMENT

0  
OMB No. 1004-0136  
Expires November 30, 2000

APPLICATION FOR PERMIT TO DRILL OR REENTER

1a. Type of Work: ☒ DRILL

☐ REENTER

b. Type of Well: ☐ Oil Well ☒

Gas  
Well

☐

Other

☐

Single  
Zone

☐

Multiple Zone

2. Name of Operator

Yates Petroleum Corporation

3A. Address 105 South Fourth Street

Artesia, New Mexico 88210

3b. Phone No. (include area code)

(505) 748-1471

4. Location of Well (Report location clearly and in accordance with any State requirements. \*)

At surface

1980' FSL and 660' FEL

At proposed prod. Zone

Same

14. Distance in miles and direction from nearest town or post office\*

Approximately 14 miles southwest of Artesia, New Mexico.

15. Distance from proposed\*  
location to nearest  
property or lease line, ft.  
(Also to nearest drig. unit line, if any)

660'

16. No. of Acres in lease

320

17. Spacing Unit dedicated to this well

S/2

18. Distance from proposed location\*  
to nearest well, drilling, completed,  
applied for, on this lease, ft.

.5 of mile

19. Proposed Depth

8750'

20. BLM/BIA Bond No. on file

NM-2811

21. Elevations (Show whether DF, KDB, RT, GL, etc.)

3744' GL

22. Approximate date work will start\*

ASAP

23. Estimated duration

45 days

24. Attachments

The following, completed in accordance with the requirements of Onshore Oil and Gas Order No. 1, shall be attached to this form:

1. Well plat certified by a registered surveyor.

2. A Drilling Plan.

3. A Surface Use Plan (if the location is on National Forest System Lands, the  
SUPO shall be filed with the appropriate Forest Service Office.

4. Bond to cover the operations unless covered by an existing bond on file (see  
Item 20 above).

5. Operator certification.

6. Such other site specific information and/or plans as may be required by the  
authorized office.

25. Signature

Name (Printed/Typed)

Date

Cy Cowan

5/9/05

Regulatory Agent

Regulatory Agent

Approved by (Signature)

/s/ Joe G. Lara

Name (Printed/Typed)

/s/ Joe G. Lara

Date

AUG 16 2005

Title

Office

ACTING FIELD MANAGER

CARLSBAD FIELD OFFICE

Application approval does not warrant or certify that the applicant holds legal or equitable title to those rights in the subject lease which would entitle the applicant to conduct  
operations thereon.

Conditions of approval, if any, are attached.

APPROVAL FOR 1 YEAR

Title 18 U.S.C. Section 1001 and Title 43 U.S.C. Section 1212, make it a crime for any person knowingly and willfully to make to any department or agency of the United  
States any false, fictitious or fraudulent statements or representations as to any matter within its jurisdiction.

\*(Instructions on reverse)

C-144 attached

WITNESS

29.5

9 5/8" CEMENT JOB

APPROVAL SUBJECT TO  
GENERAL REQUIREMENTS AND  
SPECIAL STIPULATIONS  
ATTACHED

District I  
1625 N. French Dr. Hobbs, NM 88240

District II  
611 South First, Artesia, NM 88210

District III  
1000 Rio Brazos Rd., Aztec NM 87410

District IV  
2040 South Pacheco, Santa Fe, NM 87505

State of New Mexico  
Energy, Minerals & Natural Resources

OIL CONSERVATION DIVISION

2040 South Pacheco  
Santa Fe, N M 87505

Form C-102

Revised March 17, 1999

Submit to Appropriate District Office

State Lease - 4 Copies

Fee Lease - 3 Copies

☐ AMENDED REPORT

WELL LOCATION AND ACREAGE DEDICATION PLAT

API Number	Pool Code 97338	Pool Name wc miss; GAS
Property Code	Property Name MADDOX QU FEDERAL	Well Number 2
OGRID No. 025575	Operation Name YATES PETROLEUM CORPORATION	Elevation 3744

Surface Location

UL or Lot No. I	Section 33	Township 18-S	Range 24-E	Lot Idn.	Feet from the 1980	North/South line SOUTH	Feet from the 660	East/West line EAST	County EDDY
--------------------	---------------	------------------	---------------	----------	-----------------------	---------------------------	----------------------	------------------------	----------------

Bottom Hole Location If Different From Surface

UL or Lot No.	Section	Township	Range	Lot Idn.	Feet from the	North/South line	Feet from the	East/West line	County
Dedicated Acres 320	Joint or Infill	Consolidation Code	Order No.						

NO ALLOWABLE WILL BE ASSIGNED TO THIS COMPLETION UNTIL ALL INTEREST HAVE BEEN CONSOLIDATED OR A NON-STANDARD UNIT HAS BEEN APPROVED BY THE DIVISION

OPERATOR CERTIFICATION

I HEREBY CERTIFY THAT THE INFORMATION HEREIN IS TRUE AND CORRECT TO THE BEST OF MY KNOWLEDGE AND BELIEF.

Signature

Printed Name

Cy Cowan

Title

Regulatory Agent

Date

May 9, 2005

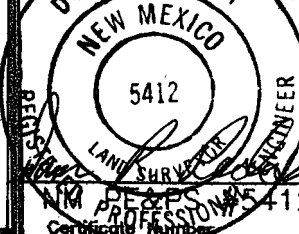
SURVEYOR CERTIFICATION

I HEREBY CERTIFY THAT THE WELL LOCATION SHOWN ON THIS PLAT WAS PLOTTED FROM FIELD NOTES OF ACTUAL SURVEYS MADE BY ME OR UNDER MY SUPERVISION, AND THAT THE SAME IS TRUE AND CORRECT TO THE BEST OF MY KNOWLEDGE AND BELIEF.

APRIL 6, 2005

Date of Survey

Signature and Seal of Professional Surveyor



Certification Number

NM-28864

LAT N32°42'51.8"  
LON W104°35'13.1"

660'

1980'

# YATES PETROLEUM CORPORATION

Maddox QU Federal #2  
1980' FSL and 660' FEL  
Section 33-T18S-R24E  
Eddy County, New Mexico

1. The estimated tops of geologic markers are as follows:

San Andres	520'	Cisco	6280'
Glorieta	1810'	Strawn	7430'
Upper Yeso	1970'	Atoka	7810'
Tubb	3195'	Middle Morrow	8380'
Lower Yeso	3370'	Lower Morrow	8500'
Abo	3845'	Chester	8560'
Wolfcamp	5220'	TD	8750'

2. The estimated depths at which anticipated water, oil or gas formations are expected to be encountered:

Water: 453'  
Oil or Gas: All potential zones.

3. Pressure Control Equipment: BOPE will be installed on the 9 5/8" casing and rated for 5000 BOP systems will be consistent with API RP 53. Pressure tests will be conducted before drilling out from under all casing strings which are set and cemented in place. Blowout Preventor controls will be installed prior to drilling the surface plug and will remain in use until the well is completed or abandoned. Preventors will be inspected and operated at least daily to ensure good mechanical working order, and this inspection recorded on the daily drilling report. See Exhibit B.

## Auxiliary Equipment:

- A. Auxiliary Equipment: Kelly cock, pit level indicators, flow sensor equipment and a sub with full opening valve to fit the drill pipe and collars will be available on the rig floor in the open position at all times for use when kelly is not in use.
4. THE PROPOSED CASING AND CEMENTING PROGRAM:

## A. Casing Program: (All New)

<u>Hole Size</u>	<u>Casing Size</u>	<u>Wt./Ft</u>	<u>Grade</u>	<u>Coupling</u>	<u>Interval</u>	<u>Length</u>
14 3/4"	9 5/8"	36#	J-55	ST&C	0-1200'	1200'
8 3/4"	5 1/2"	17#	J-55	LT&C	0-100'	100'
8 3/4"	5 1/2"	15.5#	J-55	LT&C	100'-6800'	6800'
8 3/4"	5 1/2"	17#	L-80	LT&C	6800'-8875'	1950'

Yates Petroleum Corporation requests a variance to install a rotating head on the surface casing strings when intermediate casing will be set. If a BOP system is required then we wish to install a 2M system and receive a variance to test the system to 1000# using the rig pumps. The test will be held for 30 minutes on each system component. Components to be tested include pipe rams, blind rams, and annular preventer.

Minimum Casing Design Factors: Collapse 1.125, Burst 1.0, Joint Strength 1.8

B. CEMENTING PROGRAM:

Surface casing: 875 sx POZ "C" (YLD 1.9 WT 12.4). Tail in with 200 sx "C" (YLD 1.32 WT 14.8)

Production Casing: Stage I 750 sx "C" (YLD 1.82 WT 13.6) DV Tool @ 6000.  
Stage II 1500 sx Lite "C" (YLD 2.04 WT 12.4) Tail in with 100 sx "C" (YLD 1.32 WT 14.8).

Nitrified mud maybe used to bring cement to the surface on production string.

5. MUD PROGRAM AND AUXILIARY EQUIPMENT:

<u>Interval</u>	<u>Type</u>	<u>Weight</u>	<u>Viscosity</u>	<u>Fluid Loss</u>
0-1200'	FW Gel/LCM	8.3-8.6	30	N/C
1200'-3800'	Cut Brine	9.1-9.3	28	N/C
3800'-7750'	Cut Brine	9.3-9.5	29	N/C
7750'-TD	Cut Brine/Starch/4-6% KCL	9.5-9.8	31-34	<10cc

Sufficient mud material(s) to maintain mud properties, control lost circulation and contain a blow out will be available at the well site during drilling operations. Mud will be checked hourly by rig personnel.

6. EVALUATION PROGRAM:

Samples: 10' samples out from under intermediate casing.

Logging: Platform Express/HRLA, possible FMI.

Coring: Possible Rotary Sidewall Cores

DST's: Possible Abo to TD.

7. ABNORMAL CONDITIONS, BOTTOM HOLE PRESSURE, AND POTENTIAL HAZARDS:

Anticipated BHP:

From: 0	TO: 1200'	Anticipated Max. BHP: 540	PSI
From: 1200'	TO: 8750'	Anticipated Max. BHP: 4450	PSI

No abnormal pressures or temperatures are anticipated.

Lost Circulation Zones Anticipated: None

H2S Zones Anticipated: Possible Canyon.

8. ANTICIPATED STARTING DATE:

Plans are to drill this well as soon as possible after receiving approval. It should take approximately 20 days to drill the well with completion taking another 15 days.

**MULTI-POINT SURFACE USE AND OPERATIONS PLAN  
YATES PETROLEUM CORPORATION**

Maddox QU Federal #2  
1980' FSL and 660' FEL  
Section 33 T18S-R24E  
Eddy County, New Mexico

This plan is submitted with Form 3160-3, Application for Permit to Drill, covering the above described well. The purpose of this plan is to describe the location of the proposed well, the proposed construction activities and operations plan, the magnitude of the surface disturbance involved and the procedures to be followed in rehabilitating the surface after completion of the operations, so that a complete appraisal can be made of the environmental effect associated with the operations.

**1. EXISTING ROADS:**

Exhibit A is a portion of the BLM map showing the well and roads in the vicinity of the proposed location. The proposed wellsite is located approximately 14 miles southwest of Artesia, New Mexico and the access route to the location is indicated in red and green on Exhibit A.

**DIRECTIONS:**

Go south of Artesia on Highway 285 to Kincaid Ranch Road (CR-38). Turn right on Kincaid Ranch Road and go 3.3 miles to the end of the pavement and a cattleguard. Cross cattleguard and continue on CR-38 for 1 mile. At this point follow county road west and cross a cattleguard. Continue going west on double road for approx. 3.7 miles to end of double road. From here continue west on lease road for approx. 1.4 miles. Turn right here and go .1 of a mile to the Arnold OL #1 well pad. The new road will start here from the northwest corner of the Arnold OL #1 following a pipeline right-of-way. Follow pipeline for approx. .4 of a mile to a fence. Turn west at the fence and go along fence for approx. .4 of a mile. The new road will start here going south for .1 of a mile to the northeast corner of the well pad.

**2. PLANNED ACCESS ROAD:**

- A. The proposed new access will be approximately .9 of a mile going to the northeast corner of the drilling pad. The road will lie in a northwest/west/south direction.
- B. The new road will be 14 feet in width (driving surface) and will be adequately drained to control runoff and soil erosion.
- C. The new road will be bladed with drainage on one side. Traffic turnouts will be built.
- D. The route of the road is visible.
- E. Existing roads will be maintained in the same or better condition.

**3. LOCATION OF EXISTING WELL:**

- A. There is drilling activity within a one-mile radius of the wellsite.
- B. Exhibit D shows existing wells within a one-mile radius of the proposed wellsite.

**4. LOCATION OF EXISTING AND/OR PROPOSED FACILITIES:**

- A. There are production facilities on this lease at the present time.
- B. In the event that the well is productive, the necessary production facilities will be installed on the drilling pad. If the well is productive oil, a gas or diesel self-contained unit will be used to provide the necessary power. No power will be required if the well is productive of gas.

**5. LOCATION AND TYPE OF WATER SUPPLY:**

- A. It is planned to drill the proposed well with a fresh water system. The water will be obtained from commercial sources and will be hauled to the location by truck over the existing and proposed roads shown in Exhibit A.

**6. SOURCE OF CONSTRUCTION MATERIALS:**

Dirt contractor will locate nearest pit and obtain any permits and materials needed for construction.

**7. METHODS OF HANDLING WASTE DISPOSAL:**

- A. Drill cuttings will be disposed of in the reserve pits.
- B. Drilling fluids will be allowed to evaporate in the reserve pits until the pits are dry.
- C. Water produced during operations will be collected in tanks until hauled to an approved disposal system, or separate disposal application will be submitted.
- D. Oil produced during operations will be stored in tanks until sold.
- E. Current laws and regulations pertaining to the disposal of human waste will be complied with.
- F. All trash, junk, and other waste materials will be contained in trash cages or bins to prevent scattering and will be removed and deposited in an approved sanitary land fill. Burial on site is not approved.

**8. ANCILLARY FACILITIES:**

None

**9. WELLSITE LAYOUT:**

- A. Exhibit C shows the relative location and dimensions of the well pad, the reserve pits, the location of the drilling equipment, rig orientation and access road approach.
- B. The reserve pits will be plastic lined. Yates Petroleum Corporation is in full compliance with the OCD General Plan for Drilling Pits approved on April 15, 2004.
- C. A 600' x 600' area has been staked and flagged.

**10. PLANS FOR RESTORATION:**

- A. After finishing drilling and/or completion operations, all equipment and other material not needed for further operations will be removed. The location will be cleaned of all trash and junk to leave the wellsite in as aesthetically pleasing a condition as possible.
- B. Unguarded pits, if any, containing fluids will be fenced until they have dried and been leveled.
- C. If the proposed well is non-productive, all rehabilitation and/or vegetation requirements of the Bureau of Land Management will be complied with and will be accomplished as expeditiously as possible. All pits will be filled level after they have evaporated and dried.

11. SURFACE OWNERSHIP: Federal Surface, Administered by Bureau of Land Management, Carlsbad, New Mexico.

12. OTHER INFORMATION:

- A. Topography: Refer to the existing archaeological report for a description of the topography, flora, fauna, soil characteristics, dwellings, historical and cultural sites.
- B. The primary surface use is for grazing.

13. OPERATOR'S REPRESENTATIVE:

A. Through A.P.D. Approval:  
  
Cy Cowan, Regulatory Agent  
Yates Petroleum Corporation  
105 South Fourth Street  
Artesia, New Mexico 88210  
Phone (505) 748-1471

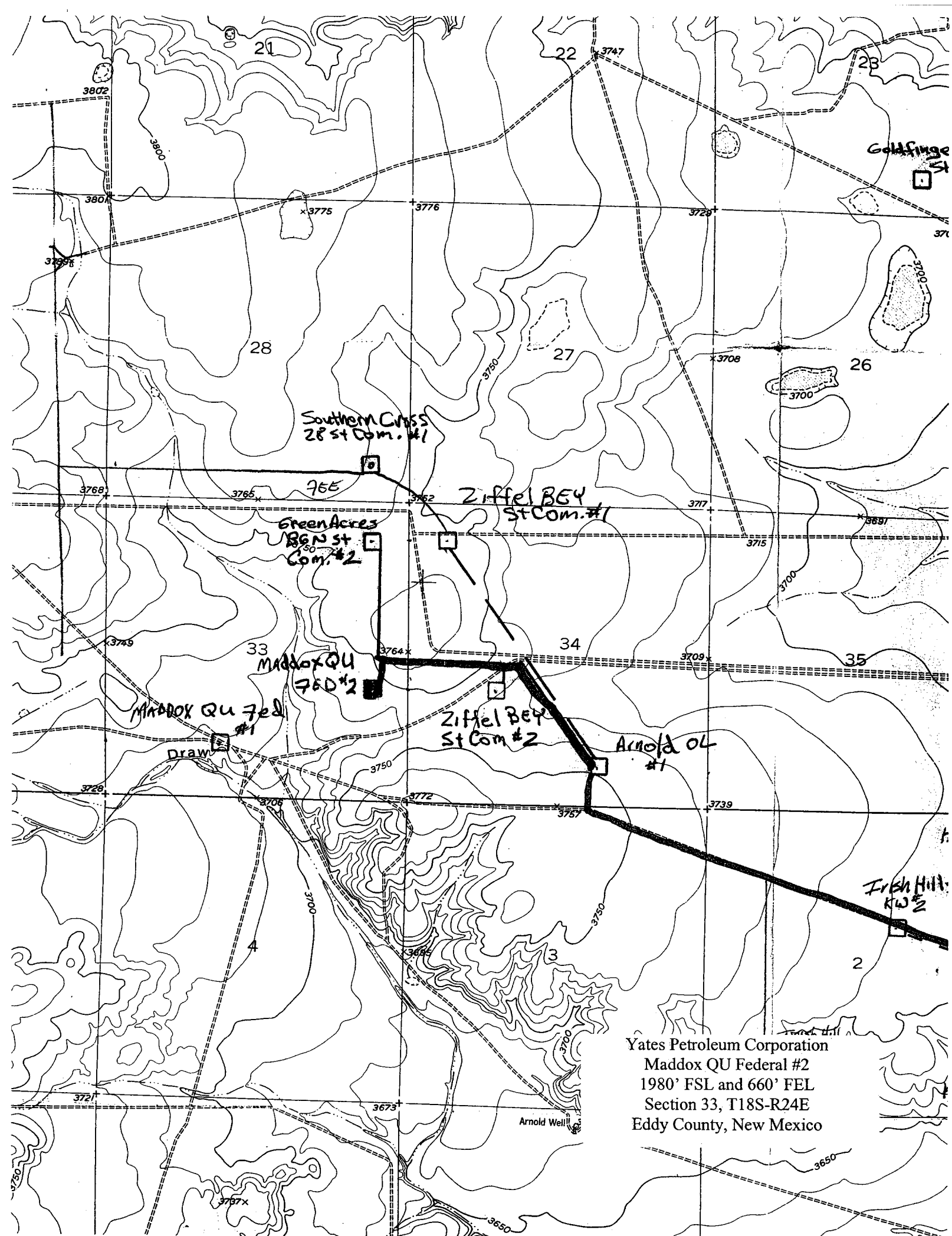
B. Through Drilling Operations,  
Completions and Production:  
Pinson McWhorter,  
Operations Manager  
Yates Petroleum Corporation  
105 South Fourth Street  
Artesia, New Mexico 88210  
Phone (505) 748-1471

14. CERTIFICATION:

I hereby certify that I, or persons under my direct supervision, have inspected the proposed drill site and access route, that I am familiar with the conditions which presently exist; that the statements made in this plan are to the best of my knowledge, true and correct; and , that the work associated with the operations proposed herein will be performed by Yates Petroleum Corporation and its contractors and subcontractors in conformity with this plan and the terms and conditions under which it is approved. This statement is subject to the provisions of 18 U.S.C. 1001 for the filing of a false statement.

5/9/05

  
Regulatory Agent



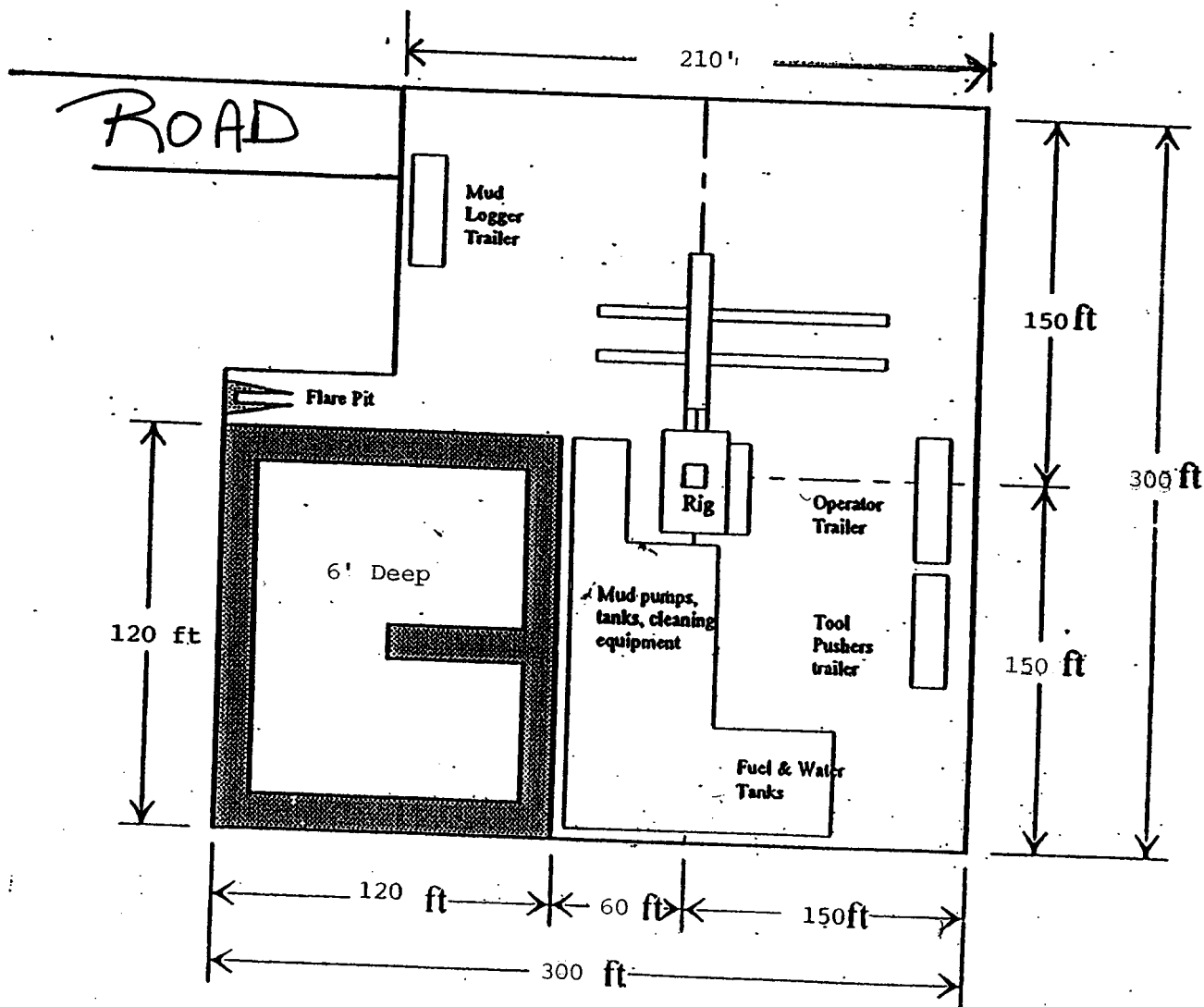
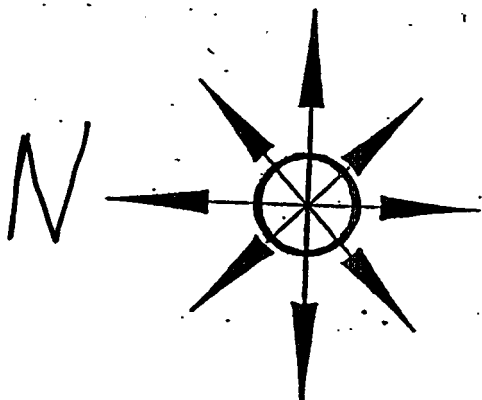


# Yates Petroleum Corporation

Location Layout for Permian Basin  
Up to 12,000'

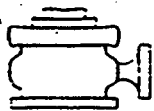
PB - L1

Yates Petroleum Corporation  
Maddox QU Federal #2  
1980' FSL and 660' FEL  
Section 33, T18S-R24E  
Eddy County, New Mexico



Distance from Well  
Head to Reserve Pit  
will vary between rigs

The above dimension  
should be a maximum

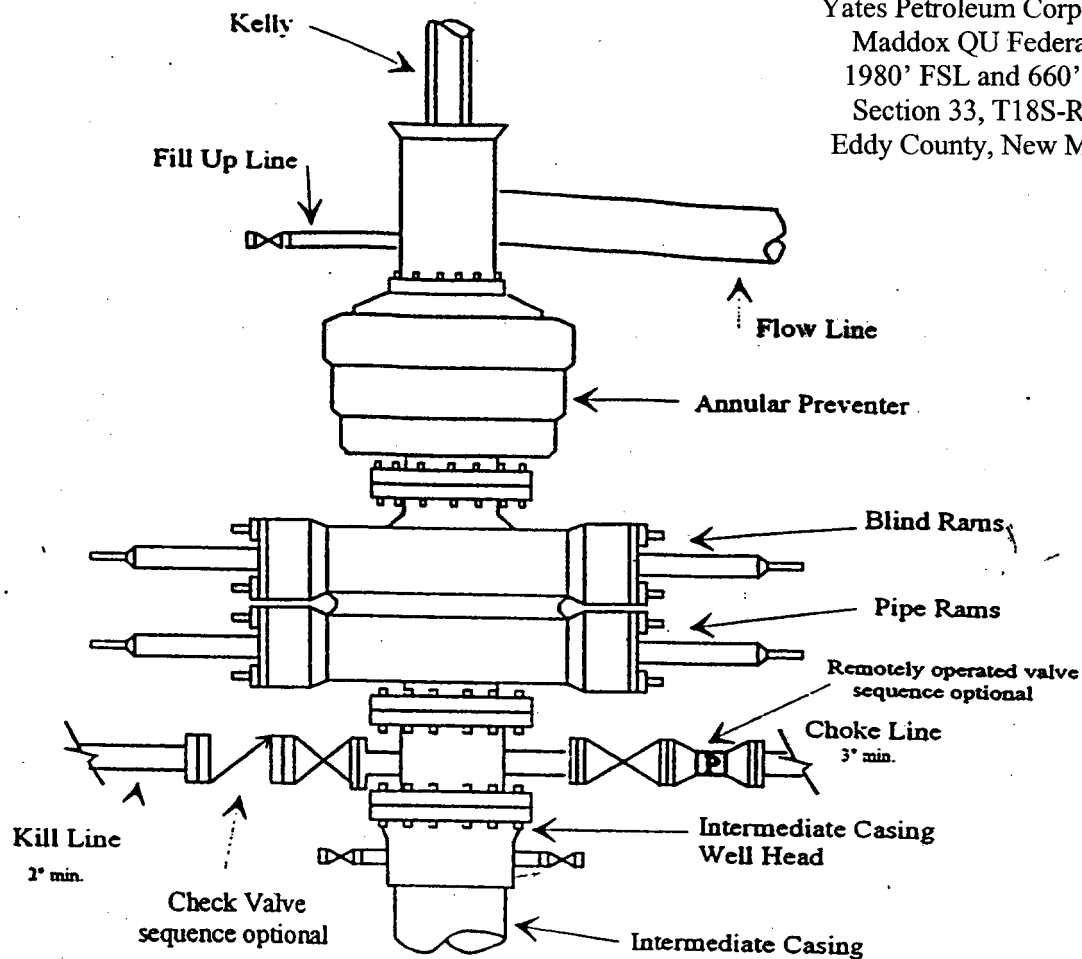


# YATES DRILLING COMPANY

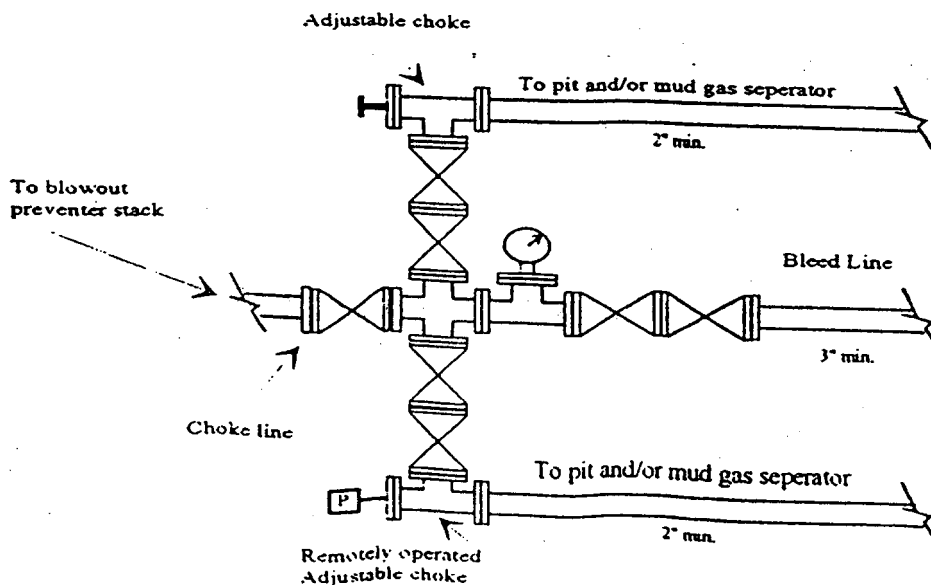
BOP-4

## Typical 5,000 psi Pressure System Schematic Annular with Double Ram Preventer Stack

Yates Petroleum Corporation  
Maddox QU Federal #2  
1980' FSL and 660' FEL  
Section 33, T18S-R24E  
Eddy County, New Mexico



Typical 5,000 psi choke manifold assembly with at least these minimum features



## CONDITIONS OF APPROVAL - DRILLING

Operator's Name: YATES PETROLEUM CORPORATION  
Well Name & No. 2 - MADDOX QU FEDERAL  
Location: 1980' FSL & 660' FEL - SEC 33 - T18S - R24E - EDDY COUNTY  
Lease: NM-28864

### I. DRILLING OPERATIONS REQUIREMENTS:

1. The Bureau of Land Management (BLM) is to be notified at the Roswell Field Office, 2909 West Second St., Roswell NM 88201, (505) 627-0272 for wells in Chaves and Roosevelt Counties; the Carlsbad Field Office, 620 East Greene St., Carlsbad, NM 88220, (505) 234-5909 or (505) 361-2822 (After hours) - for wells in Eddy County; and the Hobbs Field Station, 414 West Taylor, Hobbs NM 88240, (505) 393-3612 for wells in Lea County, in sufficient time for a representative to witness:

A. Spudding

B. Cementing casing: 9-5/8 inch 5-1/2 inch

C. BOP tests

2. Unless the production casing has been run and cemented or the well has been properly plugged, the drilling rig shall not be removed from over the hole without prior approval.

3. Submit a Sundry Notice (Form 3160-5, one original and five copies) for each casing string, describing the casing and cementing operations. Include pertinent information such as; spud date, hole size, casing (size, weight, grade and thread type), cement (type, quantity and top), water zones and problems or hazards encountered. The Sundry shall be submitted within 15 days of completion of each casing string. The reports may be combined into the same Sundry if they fall within the same 15 day time frame.

4. The API No. assigned to the well by NMOCD shall be included on the subsequent report of setting the first casing string.

### II. CASING:

1. The 9-5/8 inch surface casing shall be set at 1200 feet, below usable water and cement circulated to the surface. If cement does not circulate to the surface the appropriate BLM office shall be notified and a temperature survey or cement bond log shall be run to verify the top of the cement. Remedial cementing shall be completed prior to drilling out that string.

2. The minimum required fill of cement behind the 5-1/2 inch production casing is **cement shall extend upward a minimum of 500 feet above the uppermost hydrocarbon bearing interval.**

### III. PRESSURE CONTROL:

1. All BOP systems and related equipment shall comply with well control requirements as described in Onshore Oil and Gas Order No. 2. The BOP and related equipment shall be installed and operational before drilling below the 9-5/8 inch casing shoe and shall be tested as described in Onshore Order No. 2. Any equipment failing to test satisfactorily shall be repaired or replaced.

2. Minimum working pressure of the blowout preventer and related equipment (BOPE) shall be 3000 psi.

ORIG. SGD.) LES BABYAK

3. The appropriate BLM office shall be notified in sufficient time for a representative to witness the tests.
  - The tests shall be done by an independent service company.
  - The results of the test shall be reported to the appropriate BLM office.
  - Testing fluid must be water or an appropriate clear liquid suitable for sub-freezing temperatures. Use of drilling mud for testing is not permitted since it can mask small leaks.
  - Testing must be done in a safe workman-like manner. Hard line connections shall be required.
  - BOPE must be tested prior to drilling into the **Wolfcamp** Formation by an independent service company.

#### **IV. DRILLING MUD:**

Mud system monitoring equipment, with derrick floor indicators and visual and audio alarms, shall be operating before drilling into the **Wolfcamp** Formation, and shall be used until production casing is run and cemented. Monitoring equipment shall consist of the following:

1. Recording pit level indicator to indicate volume gains and losses.
2. Mud measuring device for accurately determining the mud volumes necessary to fill the hole during trips.
3. Flow-sensor on the flow line to warn of abnormal mud returns from the well.

# **Yates Petroleum Corporation**

**105 S. Fourth Street  
Artesia, NM 88210**

## **Hydrogen Sulfide (H<sub>2</sub>S) Contingency Plan**

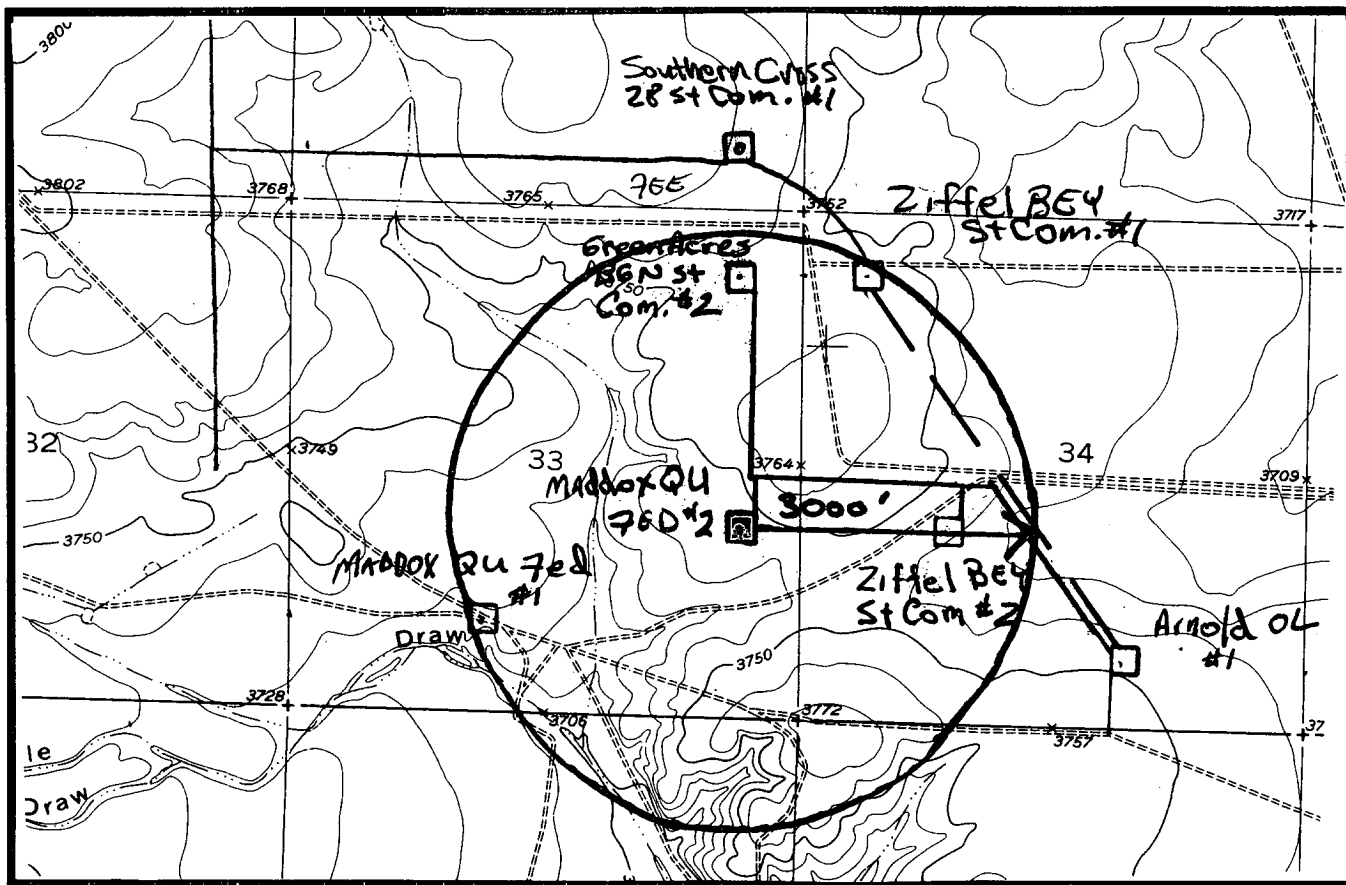
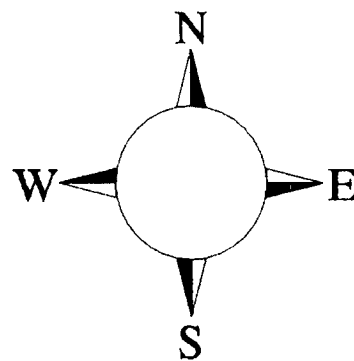
**For**

**Maddox QU Federal #2**

**1980' FSL, 660' FEL  
Section 33, T-18S, R-24E  
Eddy County NM**

# Maddox QU Federal #2 Location

This is an open drilling site. H<sub>2</sub>S monitoring equipment and emergency response equipment will be used within 500' of zones known to contain



Assumed 100 ppm ROE = 3000'

100 ppm H<sub>2</sub>S concentration shall trigger activation of this plan.

## Emergency Procedures

In the case of a release of gas containing H<sub>2</sub>S, the first responder(s) must isolate the area and prevent entry by other persons into the 100 ppm ROE. Additionally the first responder(s) must evacuate any public places encompassed by the 100 ppm ROE. First responder(s) must take care not to injure themselves during this operation. Company and/or local officials must be contacted to aid in this operation. Evacuation of the public should be beyond the 100 ppm ROE.

All responders must have training in the detection of H<sub>2</sub>S, measures for protection against the gas, equipment used for protection and emergency response. Additionally, responders must be equipped with H<sub>2</sub>S monitors and air packs in order to control the release. Use the “buddy system” to ensure no injuries during the response.

## Ignition of Gas Source

Should control of the well be considered lost and ignition considered, take care to protect against exposure to Sulfur Dioxide (SO<sub>2</sub>). Intentional ignition must be coordinated with the NMOCD and local officials. Additionally the NM State Police may become involved. NM State Police shall be the Incident Command on scene of any major release. Take care to protect downwind whenever there is an ignition of the gas

## Characteristics of H<sub>2</sub>S and SO<sub>2</sub>

Common Name	Chemical Formula	Specific Gravity	Threshold Limit	Hazardous Limit	Lethal Concentration
Hydrogen Sulfide	H <sub>2</sub> S	1.189 Air = 1	10 ppm	100 ppm/hr	600 ppm
Sulfur Dioxide	SO <sub>2</sub>	2.21 Air = 1	2 ppm	N/A	1000 ppm

## Contacting Authorities

YPC personnel must liaison with local and state agencies to ensure a proper response to a major release. Additionally, the OCD must be notified of the release as soon as possible but no later than 4 hours. Agencies will ask for information such as type and volume of release, wind direction, location of release, etc. Be prepared with all information available. The following call list of essential and potential responders has been prepared for use during a release. YPC Company response must be in coordination with the State of New Mexico’s ‘Hazardous Materials Emergency Response Plan’ (HMER)

## ***Yates Petroleum Corporation Phone Numbers***

---

YPC Office .....	(505) 748-1471
Pinson McWhorter/Operations Manager .....	(505) 748-4189
Darrel Atkins/Production Manager .....	(505) 748-4204
Ron Beasley/Prod Superintendent .....	(505) 748-4210
Al Springer/Drilling .....	(505) 748-4225
Paul Hanes/Prod. Foreman/Roswell .....	(505) 624-2805
Jim Krogman/Drilling Superintendent.....	(505) 748-4215
Artesia Answering Service .....	(505) 748-4302
(During non-office hours)	

### **Agency Call List**

#### **Eddy County (505)**

##### **Artesia**

State Police .....	746-2703
City Police.....	746-2703
Sheriff's Office .....	746-9888
Ambulance .....	911
Fire Department .....	746-2701
LEPC (Local Emergency Planning Committee) .....	746-2122
NMOCD.....	748-1283

##### **Carlsbad**

State Police .....	885-3137
City Police.....	885-2111
Sheriff's Office .....	887-7551
Ambulance .....	911
Fire Department .....	885-2111
LEPC (Local Emergency Planning Committee).....	887-3798
US Bureau of Land Management.....	887-6544

New Mexico Emergency Response Commission (Santa Fe)	(505)476-9600
24 HR .....	(505) 827-9126
New Mexico State Emergency Operations Center.....	(505) 476-9635
National Emergency Response Center (Washington, DC)	...(800) 424-8802

##### **Other**

Boots & Coots IWC .....	1-800-256-9688 or (281) 931-8884
Cudd Pressure Control.....	(915) 699-0139 or (915) 563-3356
Halliburton .....	(505) 746-2757
B. J. Services.....	(505) 746-3569

Flight For Life -4000 24th St, Lubbock, TX .....	(806) 743-9911
Aerocare -Rr 3 Box 49f , Lubbock, TX .....	(806) 747-8923
Med Flight Air Amb 2301 Yale Blvd SE #D3, Albuq, NM .....	(505) 842-4433
S B Air Med Svc 2505 Clark Carr Loop SE, Albuq, NM .....	(505) 842-4949