

District I

1625 N. French Dr., Hobbs, NM 88240

District II

1301 W. Grand Avenue, Artesia, NM 88210

District III

1000 Rio Brazos Road, Aztec, NM 87410

District IV

1220 S. St. Francis Dr., Santa Fe, NM 87505

State of New Mexico
Energy Minerals and Natural Resources

RECEIVED

Form C-101
May 27, 2004

Oil Conservation Division AUG 24 2005

Submit to appropriate District Office

1220 South St. Francis ~~DOD-ARTESIA~~
Santa Fe, NM 87505☐ AMENDED REPORT

APPLICATION FOR PERMIT TO DRILL, RE-ENTER, DEEPEN, PLUGBACK, OR ADD A ZONE

¹ Operator Name and Address Bass Enterprises Production Co. P. O. Box 2760 Midland, TX 79702		² OGRID Number 001801
³ Property Code 35052	⁵ Property Name INDIAN DRAW DEEP 7 COM.	⁴ API Number 30-015-34286
⁹ Proposed Pool 1 UNDES. OTIS (MORROW)		⁶ Well No. 1
¹⁰ Proposed Pool 2		

⁷ Surface Location

UL or lot no.	Section	Township	Range	Lot Idn	Feet from the	North/South line	Feet from the	East/Westline	County
D	7	22S	28E		1980	FNL	1980	FWL	EDDY

⁸ Proposed Bottom Hole Location If Different From Surface

UL or lot no.	Section	Township	Range	Lot Idn	Feet from the	North/South line	Feet from the	East/Westline	County

Additional Well Information

¹¹ Work Type Code N	¹² Well Type Code X G	¹³ Cable/Rotary R	¹⁴ Lease Type Code X P	¹⁵ Ground Level Elevation 3098' GL
¹⁶ Multiple NO	¹⁷ Proposed Depth 12700'	¹⁸ Formation MORROW	¹⁹ Contractor GREY WOLF	²⁰ Spud Date 10/01/2005
Depth to Groundwater 150'		Distance from nearest fresh water well 1 MILE		Distance from nearest surface water 1-1/2 MILES
Pit: Liner: Synthetic <input checked="" type="checkbox"/> 12 mil thick Clay <input type="checkbox"/>		Pit Volume: 11500 bbls		Drilling Method: Fresh Water <input checked="" type="checkbox"/> Brine <input checked="" type="checkbox"/> Diesel/Oil-based <input checked="" type="checkbox"/> Gas/Air <input type="checkbox"/>
Closed-Loop System <input type="checkbox"/>				

²¹ Proposed Casing and Cement Program

Hole Size	Casing Size	Casing weight/foot	Setting Depth	Sacks of Cement	Estimated TOC
17-1/2"	13-3/8"	48#	500' \leq 400'	525	SURFACE
12-1/4"	9-5/8"	36#	2500'	1800	SURFACE
8-3/4"	5-1/2"	17#	12700'	2500' *	SURFACE
				* TWO STAGE	

²² Describe the proposed program. If this application is to DEEPEN or PLUG BACK, give the data on the present productive zone and proposed new productive zone. Describe the blowout prevention program, if any. Use additional sheets if necessary.

SURFACE IS OWNED BY SAMMY & ELIZABETH CLARK 1617 THOMASON DRIVE, CARLSBAD NM 88221.

This well is located outside the Secretary's Potash Area and outside the R-111 Potash Area. There are no Potash leases within 1 mile of the location.

²³ I hereby certify that the information given above is true and complete to the best of my knowledge and belief. I further certify that the drilling pit will be constructed according to NMOC guidelines ☒, a general permit ☐, or an (attached) alternative OCD-approved plan ☐.

Printed name: Cindi Goodman

Title: Production Clerk

E-mail Address: cdgoodman@basspet.com

Date: 08/22/2005

Phone: (432)683-2277

OIL CONSERVATION DIVISION

Approved by:

TIM W. GUM
DISTRICT II SUPERVISOR

Title:

Approval Date: AUG 26 2005 Expiration Date: AUG 26 2006

Conditions of Approval Attached ☐

Salt 79.5

DISTRICT I
1825 N. French Dr., Hobbs, NM 88240

DISTRICT II
811 South First, Artesia, NM 88210

DISTRICT III
1000 Rio Brazos Rd., Aztec, NM 87410

DISTRICT IV
2040 South Pacheco, Santa Fe, NM 87505

State of New Mexico
Energy, Minerals and Natural Resources Department

Form C-102
Revised March 17, 1999

Submit to Appropriate District Office
State Lease - 4 Copies
Fee Lease - 3 Copies

OIL CONSERVATION DIVISION

2040 South Pacheco
Santa Fe, New Mexico 87504-2088

☐ AMENDED REPORT

WELL LOCATION AND ACREAGE DEDICATION PLAT

API Number	Pool Code 82360	Pool Name UNDES. OTIS (MORROW)
Property Code	Property Name INDIAN DRAW DEEP 7 COM	Well Number 1
OGRID No. 001801	Operator Name BASS ENTERPRISES PRODUCTION COMPANY	Elevation 3098'

Surface Location

UL or lot No.	Section	Township	Range	Lot Idn	Feet from the	North/South line	Feet from the	East/West line	County
F	7	22 S	28 E		1980	NORTH	1980	WEST	EDDY

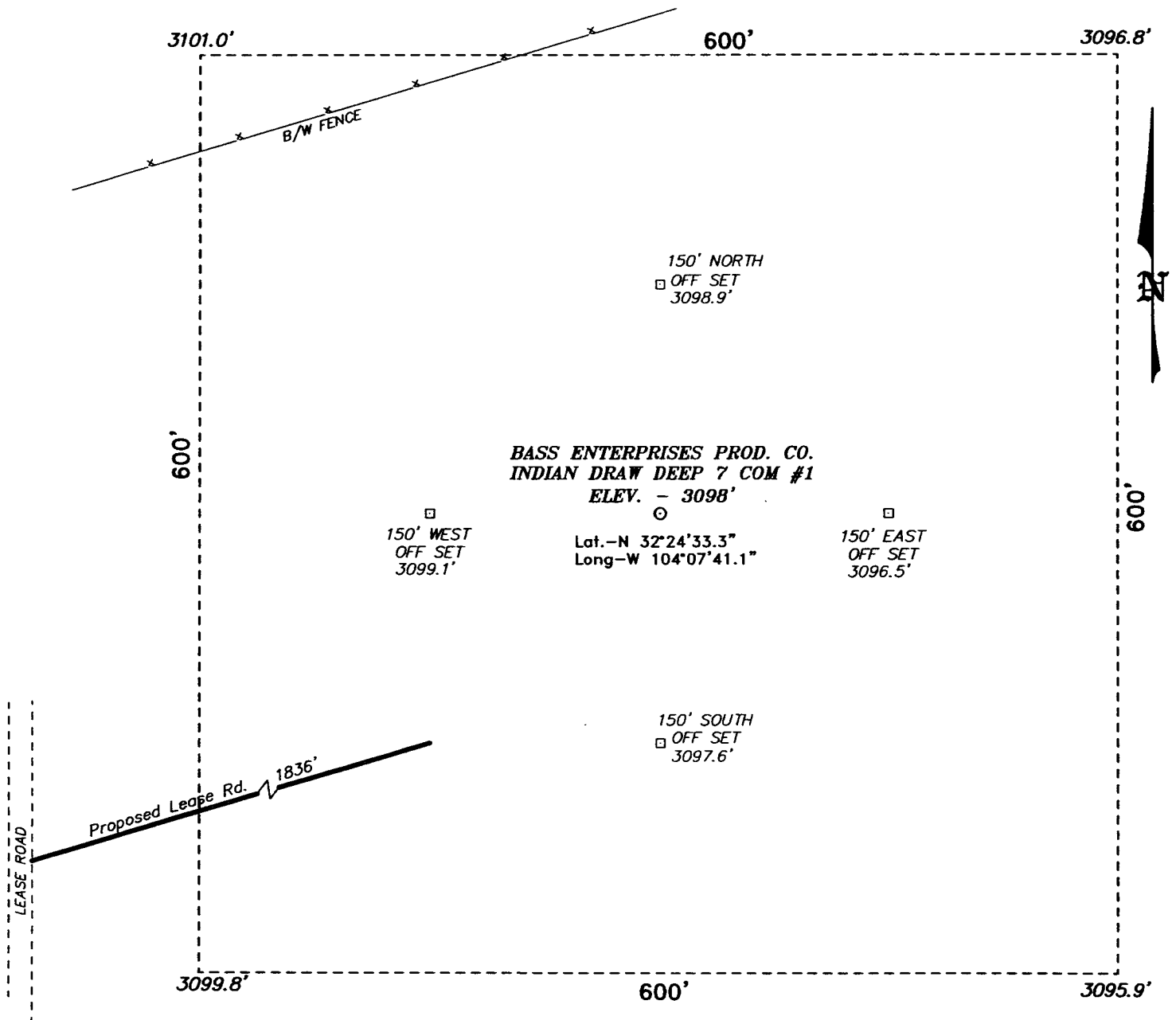
Bottom Hole Location If Different From Surface

UL or lot No.	Section	Township	Range	Lot Idn	Feet from the	North/South line	Feet from the	East/West line	County
Dedicated Acres 311.40	Joint or Infill	Consolidation Code	Order No.						

NO ALLOWABLE WILL BE ASSIGNED TO THIS COMPLETION UNTIL ALL INTERESTS HAVE BEEN CONSOLIDATED
OR A NON-STANDARD UNIT HAS BEEN APPROVED BY THE DIVISION

	<p>OPERATOR CERTIFICATION</p> <p>I hereby certify the the information contained herein is true and complete to the best of my knowledge and belief.</p> <p>Signature: <i>[Signature]</i> Printed Name: W.R. DANIELS Title: DIVISION DRILLING SUPT. Date: 8/22/2005</p> <p>SURVEYOR CERTIFICATION</p> <p>I hereby certify that the well location shown on this plat was plotted from field notes of actual surveys made by me or under my supervision and that the same is true and correct to the best of my belief.</p> <p>Date Surveyed: JULY 20, 2005 Signature & Seal of Professional Surveyor: <i>[Signature]</i> W.O. No. 5620 Certificate No. Gary L. Jones 7977 BASIN SURVEYS</p>
--	---

SECTION 7, TOWNSHIP 22 SOUTH, RANGE 28 EAST, N.M.P.M.,
EDDY COUNTY, NEW MEXICO.



DIRECTIONS TO LOCATION:

FROM THE JUNCTION OF US HWY 62/180 AND CO. RD. 605, GO SOUTH ON 605 FOR 4.8 MILES TO A LEASE ROAD JUST PAST A CATTLE GUARD; THENCE NORTH FOR 1.3 MILE TO PROPOSED LEASE ROAD.

BASIN SURVEYS P.O. BOX 1786 - HOBBS, NEW MEXICO

W.O. Number: 5620 Drawn By: K. GOAD

Date: 07-22-2005 Disk: KJG CD#7 - 5620A.DWG

BASS ENTERPRISES PRODUCTION CO.

REF: INDIAN DRAW DEEP 7 COM No. 1 / Well Pad Topo

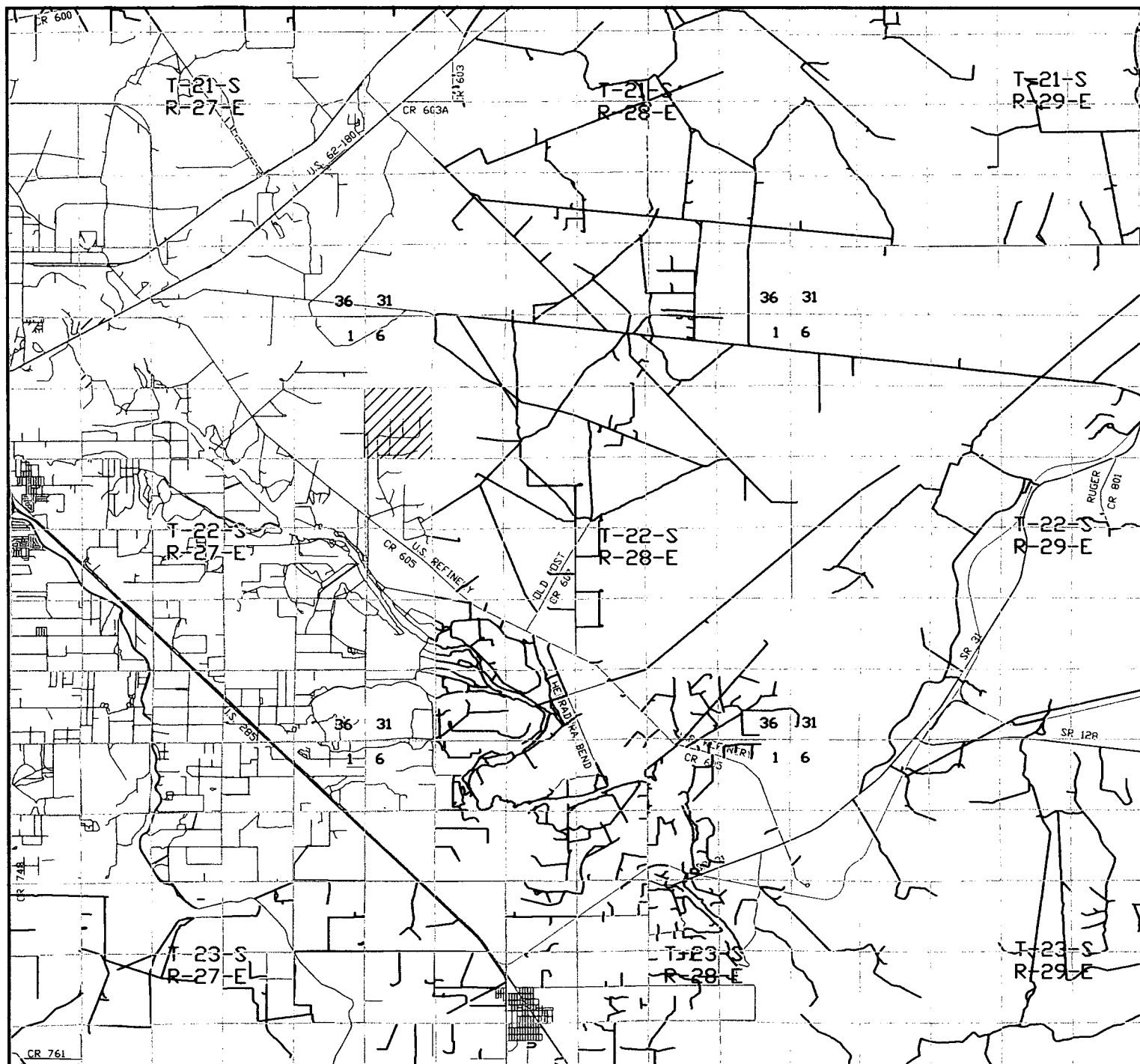
THE INDIAN DRAW DEEP 7 COM No. 1 LOCATED 1980' FROM

THE NORTH LINE AND 1980' FROM THE WEST LINE OF

SECTION 7, TOWNSHIP 22 SOUTH, RANGE 28 EAST,

N.M.P.M., EDDY COUNTY, NEW MEXICO.

Survey Date: 07-20-2005 Sheet 1 of 1 Sheets



INDIAN DRAW DEEP 7 COM #1
 Located at 1980' FNL and 1980' FWL
 Section 7, Township 22 South, Range 28 East,
 N.M.P.M., Eddy County, New Mexico.

basin
surveys
 focused on excellence
 in the oilfield

P.O. Box 1786
 1120 N. West County Rd.
 Hobbs, New Mexico 88241
 (505) 393-7316 - Office
 (505) 392-3074 - Fax
 basinsurveys.com

W.O. Number: 5620AA - KJG #7

Survey Date: 07-20-2005

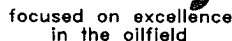
Scale: 1" = 2 MILES

Date: 07-22-2005

**BASS ENTERPRISES
 PRODUCTION CO.**



Section 7, Township 22 South, Range 28 East,
N.M.P.M., Eddy County, New Mexico.



Date: 07-22-2005

**BASS ENTERPRISES
PRODUCTION CO.**

**EIGHT POINT DRILLING PROGRAM
BASS ENTERPRISES PRODUCTION CO.**

NAME OF WELL: Indian Draw Deep 7 #1

LEGAL DESCRIPTION - SURFACE: 1980' FNL & 1980' FWL, Section 7, T-22-S, R-28-E, Eddy County, New Mexico.

POINT 1: ESTIMATED FORMATION TOPS

(See No. 2 Below)

POINT 2: WATER, OIL, GAS AND/OR MINERAL BEARING FORMATIONS

Anticipated Formation Tops: KB 3118' (est) GL 3098'

<u>FORMATION</u>	<u>ESTIMATED TOP FROM KB</u>	<u>ESTIMATED SUBSEA TOP</u>	<u>BEARING</u>
Reef			Absent
T/Delaware	2458'	+660'	Oil/Gas
T/Bone Spring	5768'	-2650'	Oil/Gas
T/Wolfcamp	9293'	-6175'	Oil/Gas
T/Strawn	10518'	-7400'	Oil/Gas
T/Atoka	10898'	-7780'	Oil/Gas
T/Upper Morrow	11398'	-8280'	Oil/Gas
T/Middle Morrow	11770'	-8660'	Oil/Gas
T/Lower Morrow	12068'	-8950'	Oil/Gas
TD	12500'	-9382'	

POINT 3: CASING PROGRAM

<u>TYPE</u>	<u>INTERVALS</u>	<u>PURPOSE</u>	<u>CONDITION</u>
20"	0'- 40'	Conductor	Contractor Discretion
13-3/8", 48#, H-40, ST&C	0'- 500'	Surface	New
9-5/8", 36#, J-55, LT&C	0'- 2500'	Intermediate	New
7", 17#, P110	0' -12700'	Production	New

POINT 4: PRESSURE CONTROL EQUIPMENT (SEE ATTACHED DIAGRAM)

A BOPE equivalent to requirements of Onshore Oil & Gas Order No. 2 – 2000 psi system (Diagram 1) will be nipped up on the surface casing head. The BOP stack, choke, kill lines, kelly cocks, inside BOP, etc. when installed on the surface casing head will be hydro-tested to 70% of internal yield pressure of casing or 1000 psig whichever is less with the rig pump. The BOPE when rigged up on the intermediate casing spool will be as described in Diagram 2 and will be tested to 5000 psig by independent tester. (As per Onshore Oil & Gas Order No 2 – 5000 psig system) In addition to the high pressure test, a low pressure (200 psig) test will be required. These tests will be performed: These tests will be performed:

- a) Upon installation
- b) After any component changes
- c) Fifteen days after a previous test
- d) As required by well conditions

A function test to insure that the preventers are operating correctly will be performed on each trip.

POINT 5: MUD PROGRAM

<u>DEPTH</u>	<u>MUD TYPE</u>	<u>WEIGHT</u>	<u>FV</u>	<u>PV</u>	<u>YP</u>	<u>FL</u>	<u>Ph</u>
0' - 500'	FW Spud Mud	8.5 - 9.2	38-70	NC	NC	NC	10.0
500' - 2500'	FW	9.8 -10.2	28-30	NC	NC	NC	9.5 - 10.5
2500' - 9000'	FW	8.8 - 9.2	28-32	NC	NC	NC	9.5 - 10.5
9000' - 11000'	BW/Starch	9 - 9.4	30-36	8	2	<100 cc	9.5 - 10.5
11000' - 12700'	BW/Starch	9.4 - 9.8	32-40	8	2	<25 cc	9.5 - 10.5

NOTE: May increase vis for logging purposes only.

POINT 6: TECHNICAL STAGES OF OPERATION

A) TESTING

None anticipated.

B) LOGGING

GR-CNL-LDT-AIT from TD to base of Salt (+/- 3300').
GR-CNL-CAL from base of Salt to surface.

C) CONVENTIONAL CORING

None anticipated.

D) CEMENT

<u>INTERVAL</u>	<u>AMOUNT SXS</u>	<u>FT OF FILL</u>	<u>TYPE</u>	<u>GALS/SX</u>	<u>PPG</u>	<u>FT³/SX</u>
SURFACE:						
Lead 0 - 300' (100% excess circ to surface)	325	300	Prem Plus + 2% CaCl ₂ + ½# Flocele	10.4	12.8	1.90
Tail 300' - 500' (100% excess circ to surface)	200	200	Prem Plus + 2% CaCl ₂	6.33	14.8	1.35
INTERMEDIATE:						
Lead 0' - 2000' (200% excess circ to surface)	1000	2000	Interfill C	14.11	11.9	2.45
Tail 2000' - 2500' (200% excess)	350	500	Prem Plus + 2% CaCl ₂	6.37	14.8	1.35
PRODUCTION: (DV Tool)						
2nd STAGE						
Lead 0' - 4000' (50% excess circ to surface)	350	4000	Lite	8.0	11.8	2.39
Tail 4000' - 9000' (50% excess)	1200	5000	Class H	6.5	14.7	1.36
1st STAGE						
9000' - 12700' (50% excess)	700	3700	Class H	6.5	14.7	1.36

E) **DIRECTIONAL DRILLING**

No directional services anticipated.

3

POINT 7: ANTICIPATED RESERVOIR CONDITIONS

Normal pressures are anticipated throughout Delaware section. A BHP of 5850 psi (max) or MWE of 9 ppg is expected. Lost circulation may exist in the Delaware Section from 2458'-5800'. No H₂S is anticipated.

POINT 8: OTHER PERTINENT INFORMATION

A) **Auxiliary Equipment**

Upper and lower kelly cocks. Full opening stab in valve on the rig floor.

B) **Anticipated Starting Date**

Upon approval

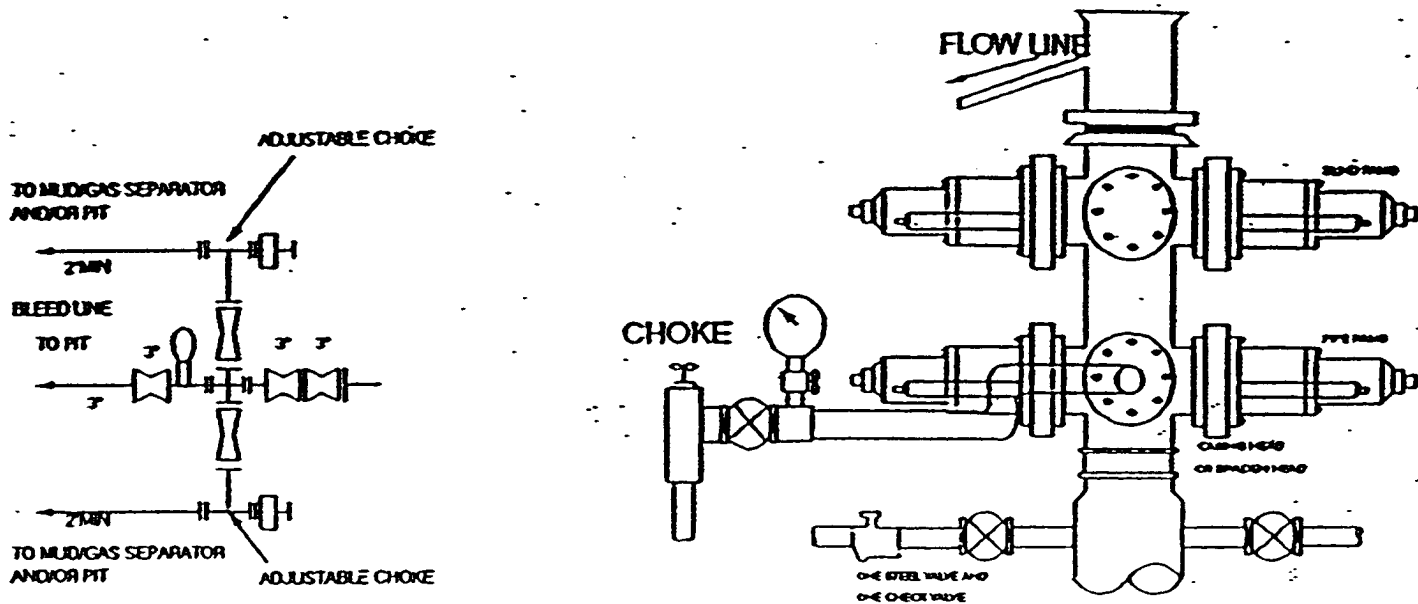
28 days drilling operations

14 days completion operations

LHS/cdg

August 19, 2005

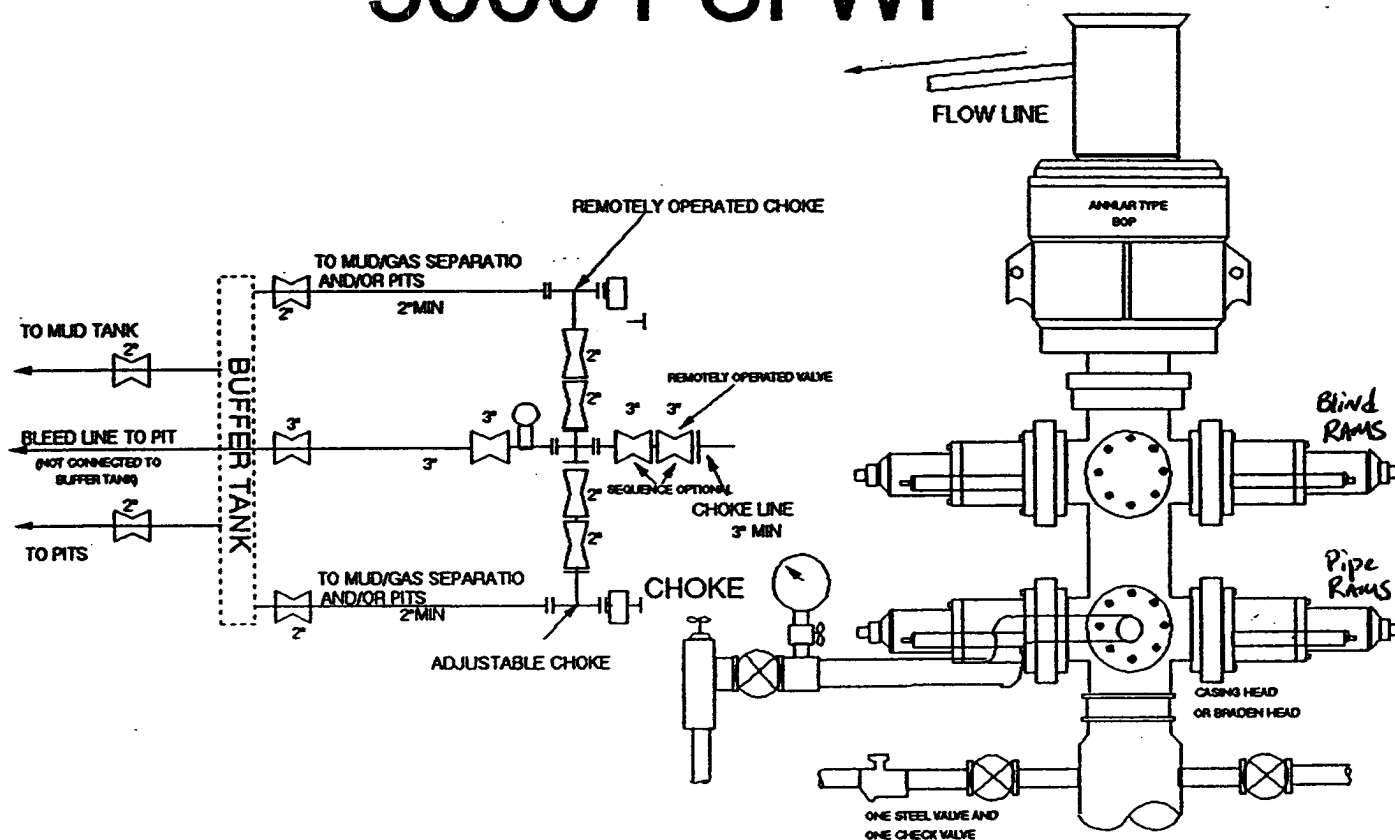
2000 PSI WP



THE FOLLOWING CONSTITUTE MINIMUM BLOWOUT PREVENTER REQUIREMENTS

- A. One double gate blowout preventer with lower rams for pipe and upper rams blind, all hydraulically controlled.
- B. Opening on preventers between rams to be flanged, studded or clamped and at least two inches in diameter.
- C. All connections from operating manifold to preventers to be all steel hose or tube a minimum of one inch in diameter.
- D. The available closing pressure shall be at least 15% in excess of that required with sufficient volume to operate (close, open, and re-close) the preventers.
- E. All connections to and from preventers to have a pressure rating equivalent to that of the BOP's.
- F. Manual controls to be installed before drilling cement plug.
- G. Valve to control flow through drill pipe to be located on rig floor.
- H. All chokes will be adjustable. Choke spool may be used between rams.

5000 PSI WP



THE FOLLOWING CONSTITUTE MINIMUM BLOWOUT PREVENTER REQUIREMENTS

- A. One double gate blowout preventer with lower rams for pipe and upper rams blind, all hydraulically controlled.
- B. Opening on preventers between rams to be flanged, studded or clamped and at least two inches in diameter.
- C. All connections from operating manifold to preventers to be all steel hose or tube a minimum of one inch in diameter.
- D. The available closing pressure shall be at least 15% in excess of that required with sufficient volume to operate (close, open, and re-close) the preventers.
- E. All connections to and from preventers to have a pressure rating equivalent to that of the BOP's.
- F. Manual controls to be installed before drilling cement plug.
- G. Valve to control flow through drill pipe to be located on rig floor.
- H. All chokes will be adjustable. Choke spool may be used between rams.

DIAGRAM 1