

N.M. Oil Cons. DIV-Dist. 2
1301 W. Grand Avenue
Artesia, NM 88210

UNITED STATES
DEPARTMENT OF THE INTERIOR
BUREAU OF LAND MANAGEMENT

APPLICATION FOR PERMIT TO DRILL OR REENTER

RECEIVED

AUG 29 2005

FORM APPROVED
OMB No. 1004-0136
Expires November 30, 2000

1a. Type of Work: ☒ DRILL ☐ REENTER

1b. Type of Well: ☒ Oil Well ☐ Gas Well ☐ Other ☐ Single Zone ☐ Multiple Zone

2. Name of Operator

Bass Enterprises Production Co.

3a. Address P. O. Box 2760 Midland, TX 79702

3b. Phone No. (include area code)
(432)683-2277

4. Location of Well (Report location clearly and in accordance with any State requirements. *)

At surface NESW UL K, 1980 FSL, 1930 FWL, 32.11118 N LAT, 103.55236 W LON

At proposed prod. zone SAME

14. Distance in miles and direction from nearest town or post office*

14 MILES EAST OF MALAGA NM

15. Distance from proposed location* to nearest property or lease line, ft.
(Also to nearest drig. unit line, if any)

1930'

16. No. of Acres in lease

1922

17. Spacing Unit dedicated to this well

40.00

18. Distance from proposed location* to nearest well, drilling, completed, applied for, on this lease, ft.

2175'

19. Proposed Depth

7585'

20. BLM/BIA Bond No. on file

21. Elevations (Show whether DF, KDB, RT, GL, etc.)

3163 GL

22. Approximate date work will start*

08/01/2005

23. Estimated duration

12 DAYS

24. Attachments

CARLSBAD CONTROLLED WATER BASIN

The following, completed in accordance with the requirements of Onshore Oil and Gas Order No. 1, shall be attached to this form:

1. Well plat certified by a registered surveyor.
2. A Drilling Plan
3. A Surface Use Plan (if the location is on National Forest System Lands, the SUPO shall be filed with the appropriate Forest Service Office).

4. Bond to cover the operations unless covered by an existing bond on file (see Item 20 above).
5. Operation certification.
6. Such other site specific information and/or plans as may be required by the authorized officer.

25. Signature

Cindi Goodman

Name (Printed/Typed)

Cindi Goodman

Date

06/16/2005

Title

Production Clerk

Approved by (Signature)

/s/ Joe G. Lara

Name (Printed/Typed)

/s/ Joe G. Lara

Date

AUG 24 2005

Title

ACTING

FIELD MANAGER

Office

CARLSBAD FIELD OFFICE

Application approval does not warrant or certify the the applicant holds legal or equitable title to those rights in the subject lease which would entitle the applicant to conduct operations thereon.

Conditions of approval, if any, are attached.

APPROVAL FOR 1 YEAR

Title 18 U.S.C Section 1001 and Title 43 U.S.C. Section 1212, make it a crime for any person knowingly and willfully to make to any department or agency of the United States and false, fictitious or fraudulent statements or representations as to any matter within its jurisdiction.

*(Instructions on reverse)

5-17
29.5

APPROVAL SUBJECT TO
GENERAL REQUIREMENTS
AND SPECIAL STIPULATIONS
ATTACHED

Witness Surface Casing

Surface casing to be set into the Rustler below all fresh water sands.
Production casing will be cemented using Zone Seal cement.
Drilling Procedure, BOP Diagram, Anticipated tops and surface plans attached.

This well is located outside the Secretary's Potash area and outside the R-111 Potash area. There are no potash leases within 1 mile of the location.

DISTRICT I
1625 N. French Dr., Hobbs, NM 88240

DISTRICT II
811 South First, Artesia, NM 88210

DISTRICT III
1000 Rio Brazos Rd., Aztec, NM 87410

DISTRICT IV
2040 South Pacheco, Santa Fe, NM 87505

State of New Mexico
Energy, Minerals and Natural Resources Department

Form C-102
Revised March 17, 1999

Submit to Appropriate District Office
State Lease - 4 Copies
Fee Lease - 3 Copies

OIL CONSERVATION DIVISION

2040 South Pacheco
Santa Fe, New Mexico 87504-2088

☐ AMENDED REPORT

WELL LOCATION AND ACREAGE DEDICATION PLAT

API Number	Pool Code 47545	Pool Name NASH DRAW DELAWARE
Property Code 001796	Property Name POKER LAKE UNIT	Well Number 235
OGRID No. 001801	Operator Name BASS ENTERPRISES PRODUCTION COMPANY	Elevation 3163'

Surface Location

UL or lot No.	Section	Township	Range	Lot Idn	Feet from the	North/South line	Feet from the	East/West line	County
K	30	24 S	30 E		1980	SOUTH	1930	WEST	EDDY

Bottom Hole Location If Different From Surface

UL or lot No.	Section	Township	Range	Lot Idn	Feet from the	North/South line	Feet from the	East/West line	County
Dedicated Acres 40	Joint or Infill N	Consolidation Code	Order No.						

NO ALLOWABLE WILL BE ASSIGNED TO THIS COMPLETION UNTIL ALL INTERESTS HAVE BEEN CONSOLIDATED
OR A NON-STANDARD UNIT HAS BEEN APPROVED BY THE DIVISION

<p>LOT 1 40.62 acres</p>		<p>40.62 acres</p>		<p>162.86 acres</p>	
<p>LOT 2 40.63 acres</p>		<p>40.63 acres</p>			
<p>LOT 3 40.65 acres</p>		<p>40.65 acres</p>		<p>162.74 acres</p>	
<p>LOT 4 40.66 acres</p>		<p>40.66 acres</p>			

Diagram showing well location and acreage. The well is located in the center of the plot, with a distance of 1980' from the bottom hole location. The well location is marked with a circle and the text "LAT - N32°11'11.8" LONG - W103°55'23.6". The acreage of each lot is shown. The total acreage is 162.86 acres.

OPERATOR CERTIFICATION

I hereby certify the the information contained herein is true and complete to the best of my knowledge and belief.

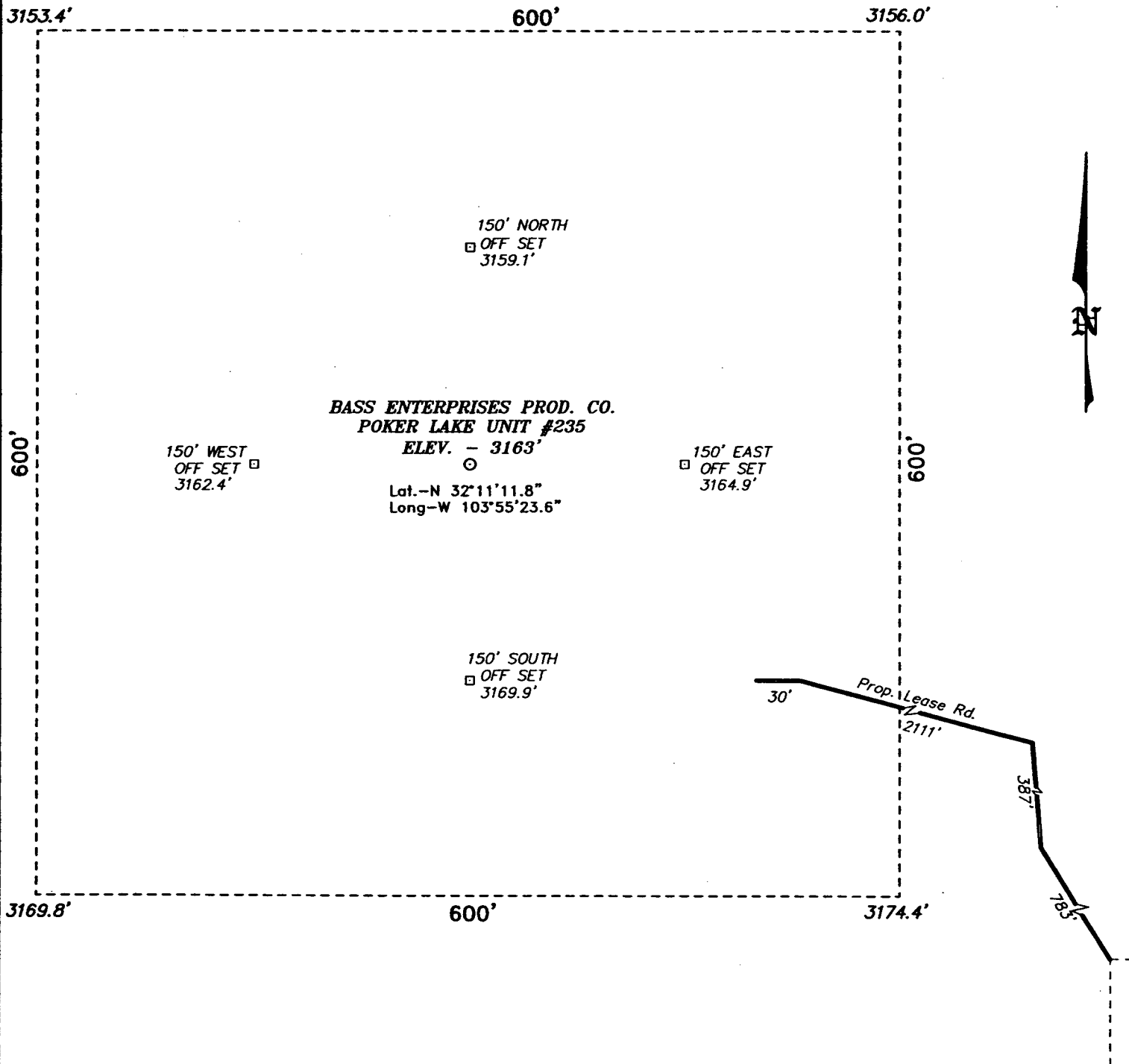
W.R. Dannels
Signature
W.R. DANNELS
Printed Name
DIVISION DRILLING SUPT.
Title
6-21-05
Date

SURVEYOR CERTIFICATION

I hereby certify that the well location shown on this plat was plotted from field notes of actual surveys made by me or under my supervision, and that the same is true and correct to the best of my belief.

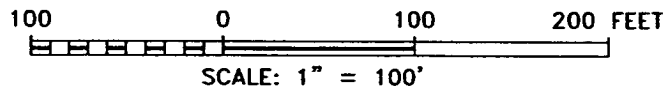
JUNE 06, 2005
Date Surveyed
Signature
Professional Surveyor
Seal of Professional Surveyor
NEW MEXICO
REG. NO. 54768
Certificate No. Gary L. Jones 7977
BASIN SURVEYS

SECTION 30, TOWNSHIP 24 SOUTH, RANGE 30 EAST, N.M.P.M.,
EDDY COUNTY, NEW MEXICO.



DIRECTIONS TO LOCATION:

FROM THE JUNCTION OF CO. RD. 746A AND CO. RD. 748, GO SOUTHEAST FOR 1.3 MILE TO LEAES ROAD; THENCE SOUTHEAST ON LEASE ROAD FOR 0.4 MILE; THENCE WEST ON LEASE ROAD FOR 0.3 MILE TO EXISTING WELL PAD AND PROPOSED LEASE ROAD.



BASS ENTERPRISES PRODUCTION CO.

REF: POKER LAKE UNIT No. 235 / Well Pad Topo

THE POKER LAKE UNIT No. 235 LOCATED 1980' FROM THE SOUTH LINE AND 1930' FROM THE WEST LINE OF SECTION 30, TOWNSHIP 24 SOUTH, RANGE 30 EAST, N.M.P.M., EDDY COUNTY, NEW MEXICO.

BASIN SURVEYS P.O. BOX 1786-HOBBS, NEW MEXICO

W.O. Number: 5476A Drawn By: K. GOAD

Date: 06-07-2005 Disk: KJG CD#7 - 5476A.DWG

Survey Date: 06-06-2005 Sheet 1 of 1 Sheets

**EIGHT POINT DRILLING PROGRAM
BASS ENTERPRISES PRODUCTION CO.**

NAME OF WELL: Poker Lake Unit #235

LEGAL DESCRIPTION - SURFACE: 1980' FSL & 1930' FWL, Section 30, T-24-S, R-30-E, Eddy County, New Mexico.

POINT 1: ESTIMATED FORMATION TOPS

(See No. 2 Below)

POINT 2: WATER, OIL, GAS AND/OR MINERAL BEARING FORMATIONS

Anticipated Formation Tops: KB 3183' (est) GL 3163'

<u>FORMATION</u>	<u>ESTIMATED TOP FROM KB</u>	<u>ESTIMATED SUBSEA TOP</u>	<u>BEARING</u>
B/Rustler	483'	+2700'	Barren
T/Salt	563'	+2620'	Barren
T/Lamar	3463'	-280'	Oil/Gas
T/Bone Spring	7213'	-4030'	Oil/Gas
T/Avalon	7333'	-4150'	Oil/Gas
TD	7585'	-4402'	

POINT 3: CASING PROGRAM

<u>TYPE</u>	<u>INTERVALS</u>	<u>PURPOSE</u>	<u>CONDITION</u>
16"	0'- 40'	Conductor	Contractor Discretion
11-3/4", 42#, H-40, ST&C	0'- 550'	Surface	New
*8-5/8", 32#, J-55, LT&C	0'- 3465'	Intermediate	New
5-1/2", 15.5#, J-55, LT&C	0'- 6300'	Production	New
5-1/2", 17#, J-55, LT&C	6300' -7585'	Production	New

*If there is no flowing sand or Loss Circulation this string will not be run.

POINT 4: PRESSURE CONTROL EQUIPMENT (SEE ATTACHED DIAGRAM)

A BOPE equivalent to requirements of Onshore Oil & Gas Order No. 2 – 2000 psi system (Diagram 1) will be nipped up on the surface casing head. The BOP stack, choke, kill lines, kelly cocks, inside BOP, etc. when installed on the surface casing head will be hydro-tested to 70% of internal yield pressure of casing or 1000 psig whichever is less with the rig pump. The BOPE when rigged up on the intermediate casing spool will be as described in Diagram 2 and will be tested to 3000 psig by independent tester. (As per Onshore Oil & Gas Order No 2 – 3000 psig system) In addition to the high pressure test, a low pressure (200 psig) test will be required. These tests will be performed: These tests will be performed:

- a) Upon installation
- b) After any component changes
- c) Fifteen days after a previous test
- d) As required by well conditions

A function test to insure that the preventers are operating correctly will be performed on each trip.

POINT 5: MUD PROGRAM

DEPTH	MUD TYPE	WEIGHT	FV	PV	YP	FL	Ph
0' - 550'	FW Spud Mud	8.5 - 9.2	38-70	NC	NC	NC	10.0
550' - 3465'	Brine Water	9.8 - 10.2	28-30	NC	NC	NC	9.5 - 10.5**
3465' - 6000'	FW	8.8 - 9.2	30-34	NC	NC	NC	9.5 - 10.5**
6000' - 6300'	FW/Starch	8.8 - 9.2	30-34	8	2	<100 cc	9.5 - 10.5**
6300' - TD	FW/Starch	8.8 - 9.2	30-34	8	2	<25 cc	9.5 - 10.5**

**** If there is no intermediate casing set @ 3465', the drilling fluid will be 10 ppg BW to 5600' where it will be converted to BW/Diesel with properties as follows: 8.8 – 9 ppg, 32 – 40 funnel secs vis, YP2, PV 8, FL 25 cc or less, Ph 9.5 – 10.**

NOTE: May increase vis for logging purposes only.

POINT 6: TECHNICAL STAGES OF OPERATION

A) TESTING

None anticipated.

B) LOGGING

GR-CNL-LDT-AIT from TD to base of Salt (+/- 3300').
GR-CNL-CAL from base of Salt to surface.

C) CONVENTIONAL CORING

None anticipated.

D) CEMENT

INTERVAL	AMOUNT SXS	FT OF FILL	TYPE	GALS/SX	PPG	FT ³ /SX
SURFACE:						
Lead 0 – 350' (100% excess circ to surface)	200	350	Prem Plus + 2% CaCl ₂ + ¼# Flocele	10.4	12.8	1.90
Tail 350' – 550' (100% excess circ to surface)	175	200	Prem Plus + 2% CaCl ₂	6.33	14.8	1.35
INTERMEDIATE:						
Lead 1000' – 3165' (200% excess)	750	2165	Interfill C	14.11	11.9	2.45
Tail 3165' – 3465' (200% excess)	200	300	Prem Plus + 2% CaCl ₂	6.37	14.8	1.35
PRODUCTION:						
Base Slurry w/nitrogen 2977-7585' (50% excess)	750	4608	Premium Plus + 2% Zone Sealant 2000	6.76	9.1-14.5	2.3-1.39

Nitrogen
300/600
scf/bbl

COMPRESSIVE
Strength
1200

E) DIRECTIONAL DRILLING

No directional services anticipated.

POINT 7: ANTICIPATED RESERVOIR CONDITIONS

Normal pressures are anticipated throughout Delaware section. A BHP of 3285 psi (max) or MWE of 8.7 ppg is expected. Lost circulation may exist in the Delaware Section from 3477-7597'. No H₂S is anticipated.

POINT 8: OTHER PERTINENT INFORMATION**A) Auxiliary Equipment**

Upper and lower kelly cocks. Full opening stab in valve on the rig floor.

B) Anticipated Starting Date

Upon approval

12 days drilling operations

14 days completion operations

GEG/cdg

June 16, 2005

MULTI-POINT SURFACE USE PLAN

NAME OF WELL: Poker Lake Unit #235

LEGAL DESCRIPTION - SURFACE: 1980 FSL & 1930' FWL, Section 30, T-24-S, R-30-E, Eddy County, New Mexico.

POINT 1: EXISTING ROADS

A) Proposed Well Site Location:

See Exhibit A and Survey Plats

B) Existing Roads:

From Carlsbad, New Mexico, go 8 miles south on Highway 285 to Highway 31. Turn north and go 7 miles on Highway 31. Turn east on Highway 128 and go 4 miles to Rawhide Road (located between mile markers 4 and 5). Go south for 7 miles to lease road, then east for 0.25 mile, then south 0.9 miles, then east 0.3 mile, then southeasterly for 5 miles, then westerly for 1.2 miles to Co. Road 748. From junction of County Road 746 and County Road 748 go southeast for 1.3 miles to lease road. Turn Southeast for 0.4 miles, thence west on lease road for 0.3 miles to existing well pad.

C) Existing Road Maintenance or Improvement Plan:

See Exhibit B and Survey Plats.

POINT 2: NEW PLANNED ACCESS ROUTE

A) Route Location:

Approximately 3311' of new road is required.

B) Width

12'

C) Maximum Grade

Grade to match existing topography or as per BLM requirements.

D) Turnout Ditches

Spaced per BLM requirements.

E) Culverts, Cattle Guards, and Surfacing Equipment

If required, culverts and cattle guards will be set per BLM Specs.

POINT 3: LOCATION OF EXISTING WELLS

Exhibit A indicates existing wells within the surrounding area.

POINT 11: OTHER INFORMATION

Page 5

A) Terrain

Relatively flat.

B) Soil

Caliche and sand.

C) Vegetation

Sparse, primarily grasses and mesquite with very little grass.

D) Surface Use

Primarily grazing.

E) Surface Water

There are no ponds, lakes, streams or rivers within several miles of the wellsite.

F) Water Wells

There is one water well located within 1-1/2 miles of the proposed well. This well is approximately 7920' North of the proposed well.

G) Residences and Buildings

None in the immediate vicinity.

H) Historical Sites

None observed.

I) Archeological Resources

An archeological survey will be obtained for this area. Before any construction begins, a full and complete archeological survey will be submitted to the Bureau of Land Management. Any location or construction conflicts will be resolved before construction begins.

J) Surface Ownership

The well site is on federally owned land.

K) Well signs will be posted at the drilling site.

L) Open Pits

All pits containing liquid or mud will be fenced and bird-netted.

POINT 12: OPERATOR'S FIELD REPRESENTATIVE

Page 6

(Field personnel responsible for compliance with development plan for surface use).

DRILLING

William R. Dannels
Box 2760
Midland, Texas 79702
(432) 683-2277

PRODUCTION

Mike Waygood
3104 East Green Street
Carlsbad, New Mexico 88220
(505) 887-7329

Kent A. Adams
Box 2760
Midland, Texas 79702
(432) 683-2277

POINT 13: CERTIFICATION

I hereby certify that I, or persons under my direct supervision have inspected the proposed drill site and access route; that I am familiar with the conditions which currently exist; that the statements made in the plan are, to the best of my knowledge, true and correct; and that the work associated with operations proposed herein will be performed by Bass Enterprises Production Co. and it's contractors and subcontractors in conformity with this plan and the terms and conditions under which it is approved. This statement is subject to the provisions of 18 U.S.C. 1001 for the filing of a false statement.

6-21-05
Date

William R. Dannels
William R. Dannels

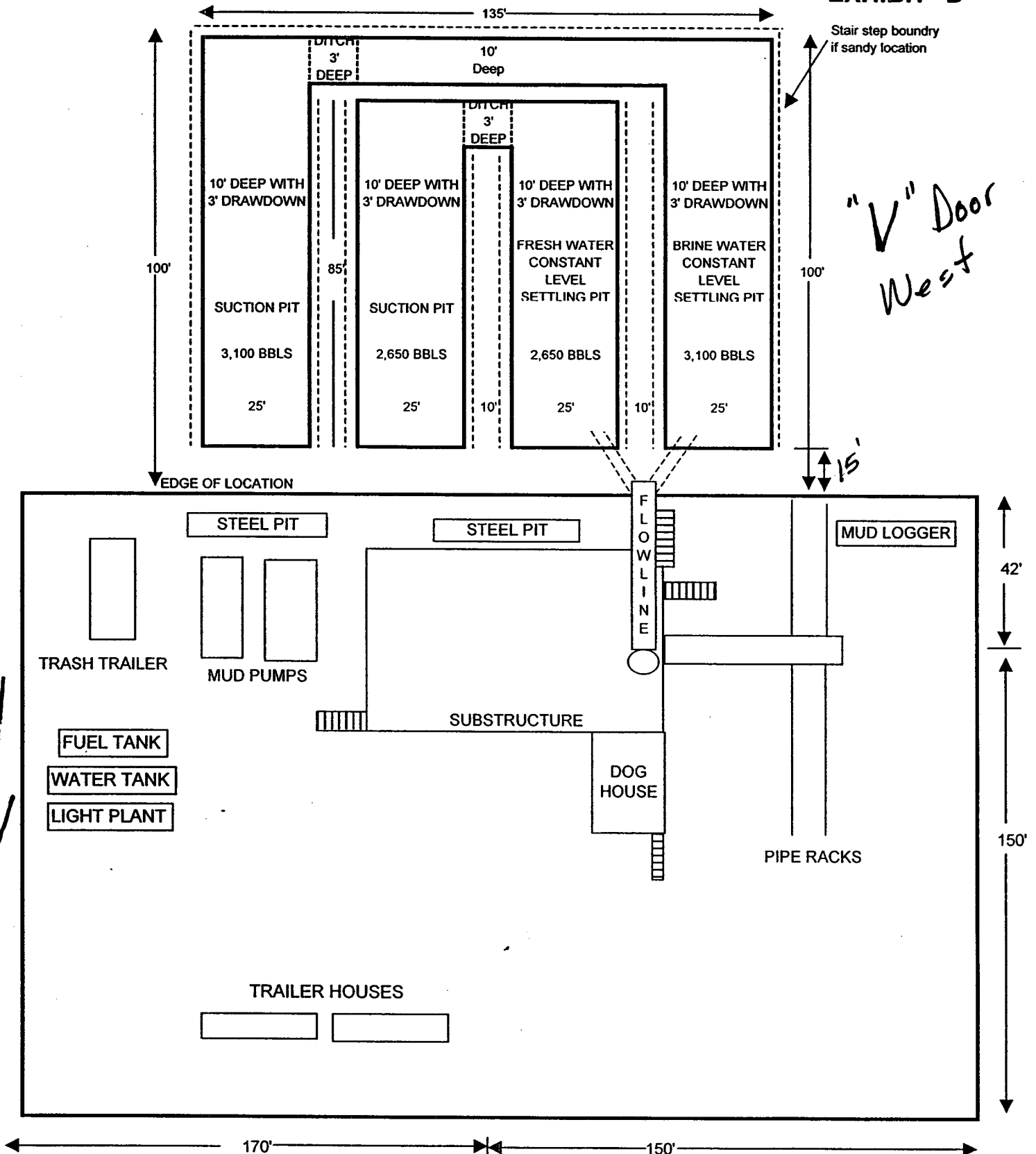
GEG/cdg

BASS ENTERPRISES PRODUCTION COMPANY

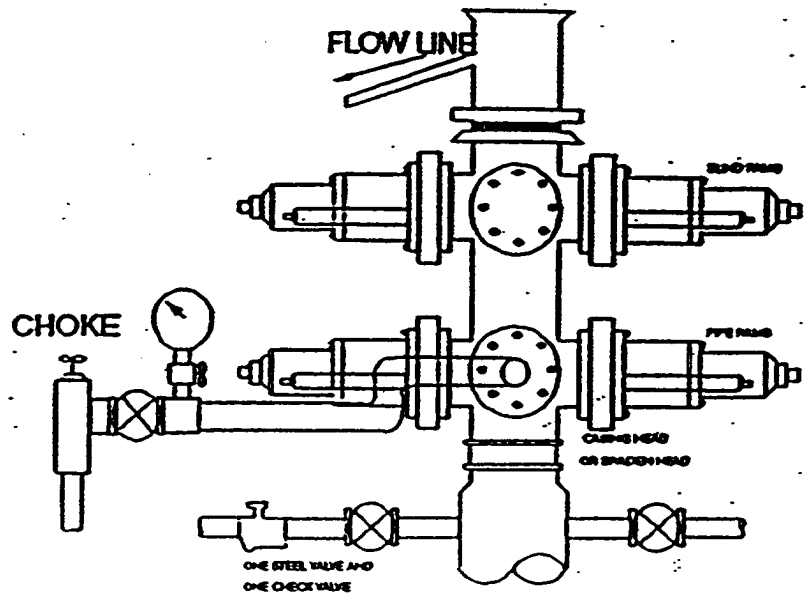
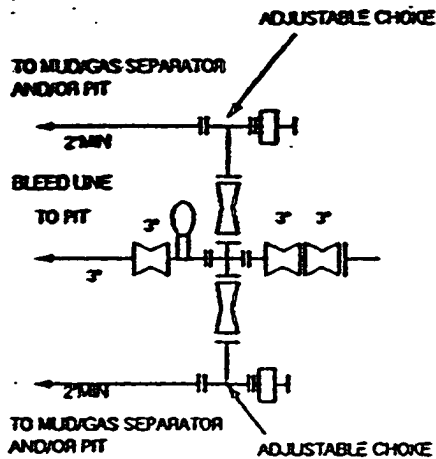
Poker Lake Unit #216

Grey Wolf Rig 15

EXHIBIT "D"



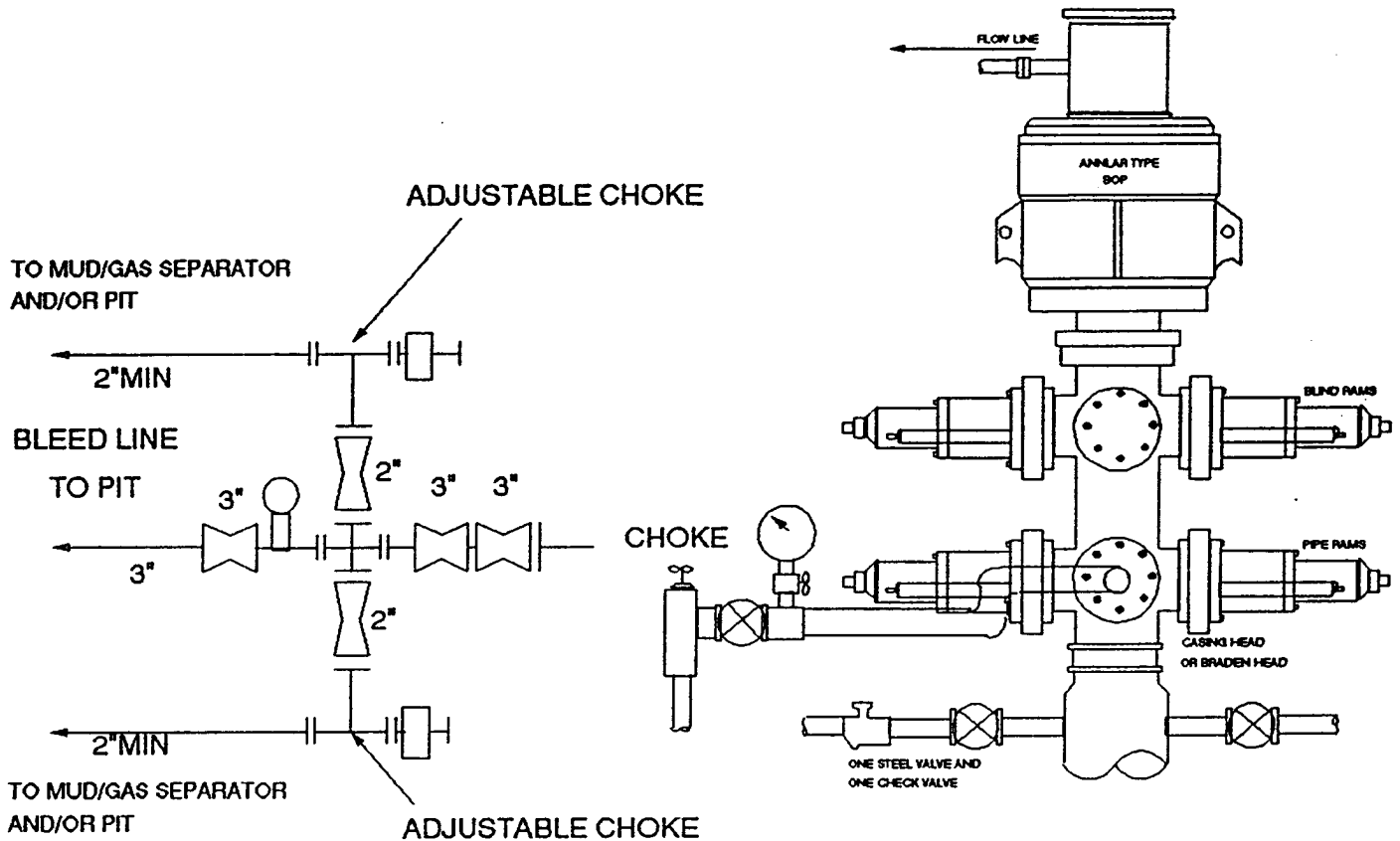
2000 PSI WP



THE FOLLOWING CONSTITUTE MINIMUM BLOWOUT PREVENTER REQUIREMENTS

- A. One double gate blowout preventer with lower rams for pipe and upper rams blind, all hydraulically controlled.
- B. Opening on preventers between rams to be flanged, studded or clamped and at least two inches in diameter.
- C. All connections from operating manifold to preventers to be all steel hose or tube a minimum of one inch in diameter.
- D. The available closing pressure shall be at least 15% in excess of that required with sufficient volume to operate (close, open, and re-close) the preventers.
- E. All connections to and from preventers to have a pressure rating equivalent to that of the BOP's.
- F. Manual controls to be installed before drilling cement plug.
- G. Valve to control flow through drill pipe to be located on rig floor.
- H. All chokes will be adjustable. Choke spool may be used between rams.

3000 PSI WP



THE FOLLOWING CONSTITUTE MINIMUM BLOWOUT PREVENTER REQUIREMENTS

- A. One double gate blowout preventer with lower rams for pipe and upper rams blind, all hydraulically controlled.
- B. Opening on preventers between rams to be flanged, studded or clamped and at least two inches in diameter.
- C. All connections from operating manifold to preventers to be all steel hose or tube a minimum of one inch in diameter.
- D. The available closing pressure shall be at least 15% in excess of that required with sufficient volume to operate (close, open, and re-close) the preventers.
- E. All connections to and from preventers to have a pressure rating equivalent to that of the BOP's.
- F. Manual controls to be installed before drilling cement plug.
- G. Valve to control flow through drill pipe to be located on rig floor.
- H. All chokes will be adjustable. Choke spool may be used between rams.