

## DISTRICT I

1025 N. FRENCH DR., HOBBS, NM 88240

## DISTRICT II

1301 W. GRAND AVENUE, ARTESIA, NM 88210

## DISTRICT III

1000 Rio Brazos Rd., Aztec, NM 87410

## DISTRICT IV

1220 S. ST. FRANCIS DR., SANTA FE, NM 87505

## State of New Mexico

Energy, Minerals and Natural Resources Department

## OIL CONSERVATION DIVISION

1220 SOUTH ST. FRANCIS DR.  
Santa Fe, New Mexico 87505

Form C-102

Revised October 12, 2005

Submit to Appropriate District Office

State Lease - 4 Copies

Fee Lease - 3 Copies

## WELL LOCATION AND ACREAGE DEDICATION PLAT

☐ AMENDED REPORT

API Number <b>30-025-37934</b>	Pool Code <b>23000</b>	Pool Name <b>Eunice Monument GB/SA</b>
Property Code <b>302708</b>	Property Name <b>NMGSA UNIT</b>	Well Number <b>340</b>
GRID No. <b>873</b>	Operator Name <b>APACHE CORPORATION</b>	Elevation <b>3645'</b>

## Surface Location

UL or lot No.	Section	Township	Range	Lot Idn	Feet from the	North/South line	Feet from the	East/West line	County
0	20	19-S	37-E		165	SOUTH	2500	EAST	LEA

## Bottom Hole Location If Different From Surface

UL or lot No.	Section	Township	Range	Lot Idn	Feet from the	North/South line	Feet from the	East/West line	County

Dedicated Acres	Joint or Infill	Consolidation Code	Order No.
40			

NO ALLOWABLE WILL BE ASSIGNED TO THIS COMPLETION UNTIL ALL INTERESTS HAVE BEEN CONSOLIDATED  
OR A NON-STANDARD UNIT HAS BEEN APPROVED BY THE DIVISION

<p>GEODETIC COORDINATES NAD 27 NME</p> <p>Y=597769.3 N X=826509.7 E</p> <p>LAT.=32°38'20.00" N LONG.=103°16'21.59" W</p>	<p>OPERATOR CERTIFICATION</p> <p>I hereby certify that the information herein is true and complete to the best of my knowledge and belief, and that this organization either owns a working interest or unleased mineral interest in the land including the proposed bottom hole location or has a right to drill this well at this location pursuant to a contract with an owner of such mineral or working interest, or to a voluntary pooling agreement or a compulsory pooling order heretofore entered by the division.</p> <p><i>Lana Williams</i> 6/13/06 Signature Date Lana Williams Printed Name</p>	
	<p>SURVEYOR CERTIFICATION</p> <p>I hereby certify that the well location shown on this plat was plotted from field notes of actual surveys made by me or under my supervision, and that the same is true and correct to the best of my belief.</p> <p>MAY 09, 2006</p>	
	<p>Date Surveyed _____ MR _____</p> <p>Signature &amp; Seal of Professional Surveyor</p> <p><i>Ronald E. Edson</i> 5/16/06 06.11.0762</p>	
	<p>Certificate No. GARY EIDSON 12641 RONALD E. EIDSON 3239</p>	

DISTRICT I  
1625 N. FRENCI DR., BOBBS, NM 88240

DISTRICT II  
1301 W. GRAND AVENUE, ARTESIA, NM 88210

DISTRICT III  
1000 Rio Brazos Rd., Aztec, NM 87410

DISTRICT IV  
1220 S. ST. FRANCIS DR., SANTA FE, NM 87505

State of New Mexico  
Energy, Minerals and Natural Resources Department

OIL CONSERVATION DIVISION  
1220 SOUTH ST. FRANCIS DR.  
Santa Fe, New Mexico 87505

Form C-102  
Revised October 12, 2005  
Submit to Appropriate District Office  
State Lease - 4 Copies  
Fee Lease - 3 Copies

WELL LOCATION AND ACREAGE DEDICATION PLAT

☐ AMENDED REPORT

API Number		Pool Code	Pool Name
Property Code	Property Name NMGSA UNIT		Well Number 340
OGRID No.	Operator Name APACHE CORPORATION		Elevation 3645'

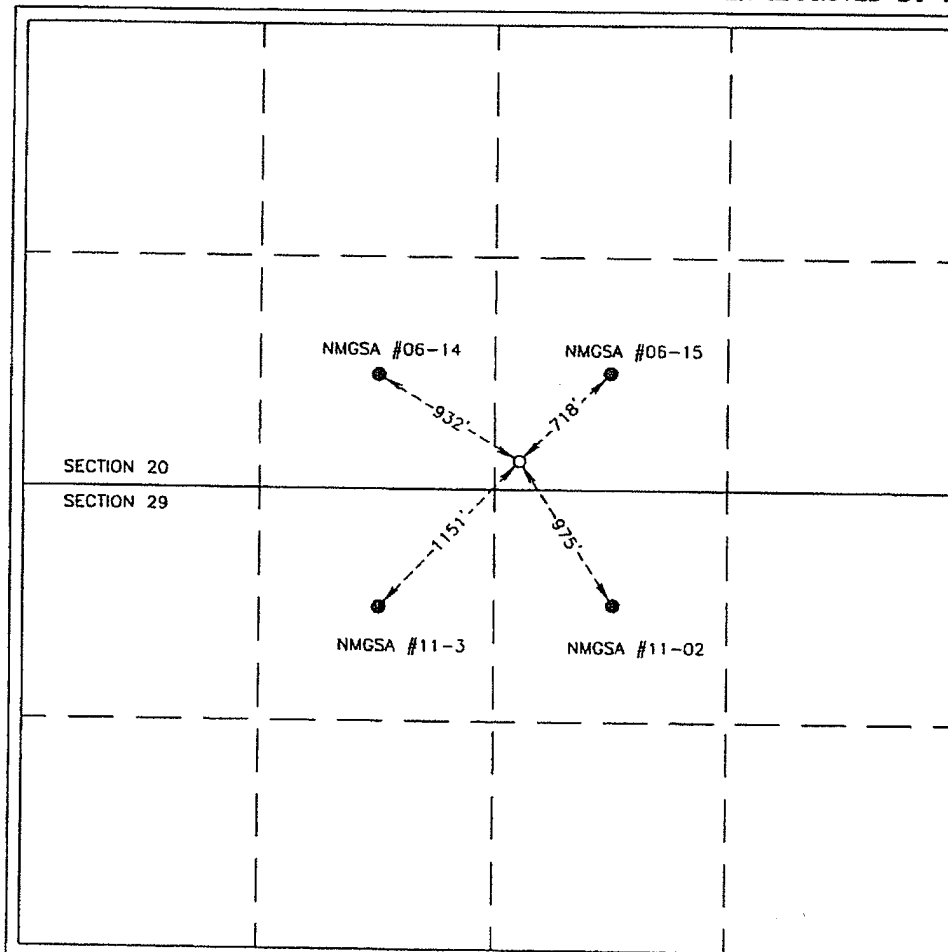
Surface Location

UL or lot No.	Section	Township	Range	Lot Idn	Feet from the	North/South line	Feet from the	East/West line	County
0	20	19-S	37-E		165	SOUTH	2500	EAST	LEA

Bottom Hole Location If Different From Surface

UL or lot No.	Section	Township	Range	Lot Idn	Feet from the	North/South line	Feet from the	East/West line	County
Dedicated Acres		Joint or Infill	Consolidation Code	Order No.					

NO ALLOWABLE WILL BE ASSIGNED TO THIS COMPLETION UNTIL ALL INTERESTS HAVE BEEN CONSOLIDATED  
OR A NON-STANDARD UNIT HAS BEEN APPROVED BY THE DIVISION



OPERATOR CERTIFICATION

I hereby certify that the information herein is true and complete to the best of my knowledge and belief, and that this organization either owns a working interest or unleased mineral interest in the land including the proposed bottom hole location or has a right to drill this well at this location pursuant to a contract with an owner of such mineral or working interest, or to a voluntary pooling agreement or a compulsory pooling order heretofore entered by the division.

*Lana Williams* 6/13/06  
Signature Date  
Lana Williams  
Printed Name

SURVEYOR CERTIFICATION

I hereby certify that the well location shown on this plat was plotted from field notes of actual surveys made by me or under my supervision, and that the same is true and correct to the best of my belief.

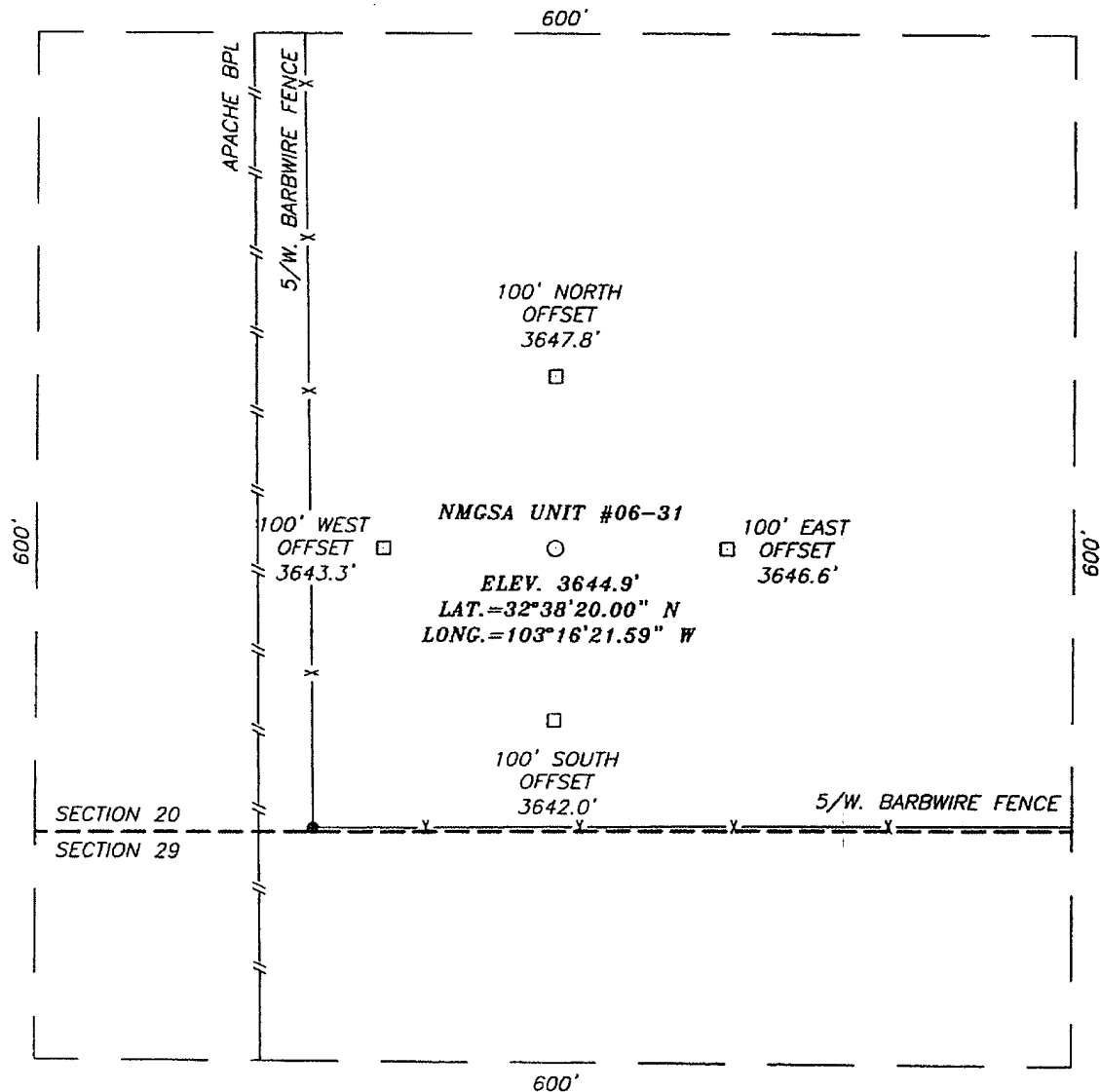
MAY 09, 2006

Date Surveyed MR  
Signature & Seal of  
Professional Surveyor

06.11.0762

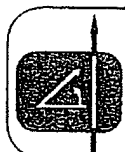
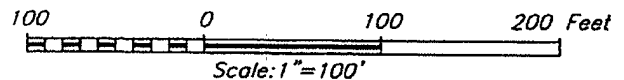
Certificate No. GARY EIDSON 12841  
RONALD J. EIDSON 3239

SECTION 20, TOWNSHIP 19 SOUTH, RANGE 37 EAST, N.M.P.M.,  
LEA COUNTY, NEW MEXICO



DIRECTIONS TO LOCATION

FROM THE INTERSECTION OF ST. HWY. #8 AND ST. HWY. #322, GO NORTH ON ST. HWY. #8 APPROX. 1.4 MILES. TURN LEFT (THROUGH CATTLE GUARD) AND GO WEST APPROX. 0.4 MILES. TURN LEFT AND GO SOUTH APPROX. 0.4 MILES TO AN EAST/WEST FENCE LINE. TURN RIGHT AND GO WEST (ALONG FENCE LINE) APPROX. 0.1 MILES. THIS LOCATION IS APPROX. 165 FEET NORTH.



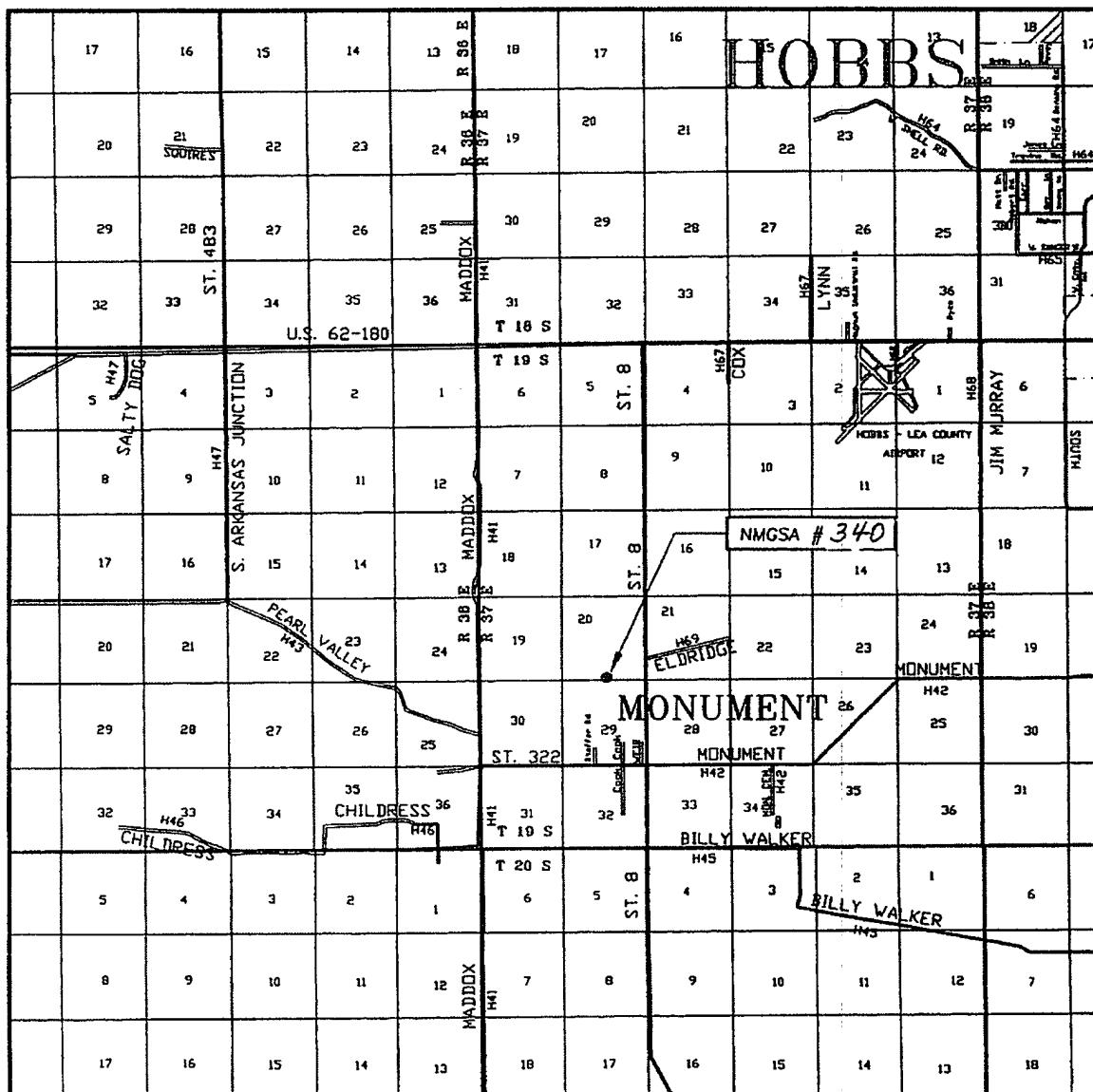
PROVIDING SURVEYING SERVICES  
SINCE 1946  
**JOHN WEST SURVEYING COMPANY**  
412 N. DAL PASO  
HOBBS, N.M. 88240  
(505) 393-3117

**APACHE CORPORATION**

NMGSA UNIT 340  
LOCATED 165 FEET FROM THE SOUTH LINE  
AND 2500 FEET FROM THE EAST LINE OF SECTION 20,  
TOWNSHIP 19 SOUTH, RANGE 37 EAST, N.M.P.M.,  
LEA COUNTY, NEW MEXICO.

Survey Date: 05/09/06	Sheet 1 of 1 Sheets
W.O. Number: 06.11.0762	Dr By: M.R. Rev 1:N/A
Date: 05/12/06	Disk: CD#6 06110762 Scale: 1"=100'

# VICINITY MAP



SCALE: 1" = 2 MILES

SEC. 20 TWP. 19-S RGE. 37-E

SURVEY N.M.P.M.

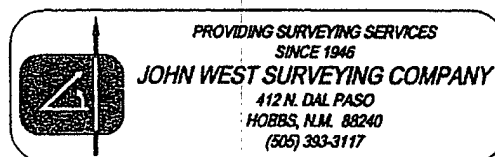
COUNTY LEA STATE NEW MEXICO

DESCRIPTION 165' FSL & 2500' FEL

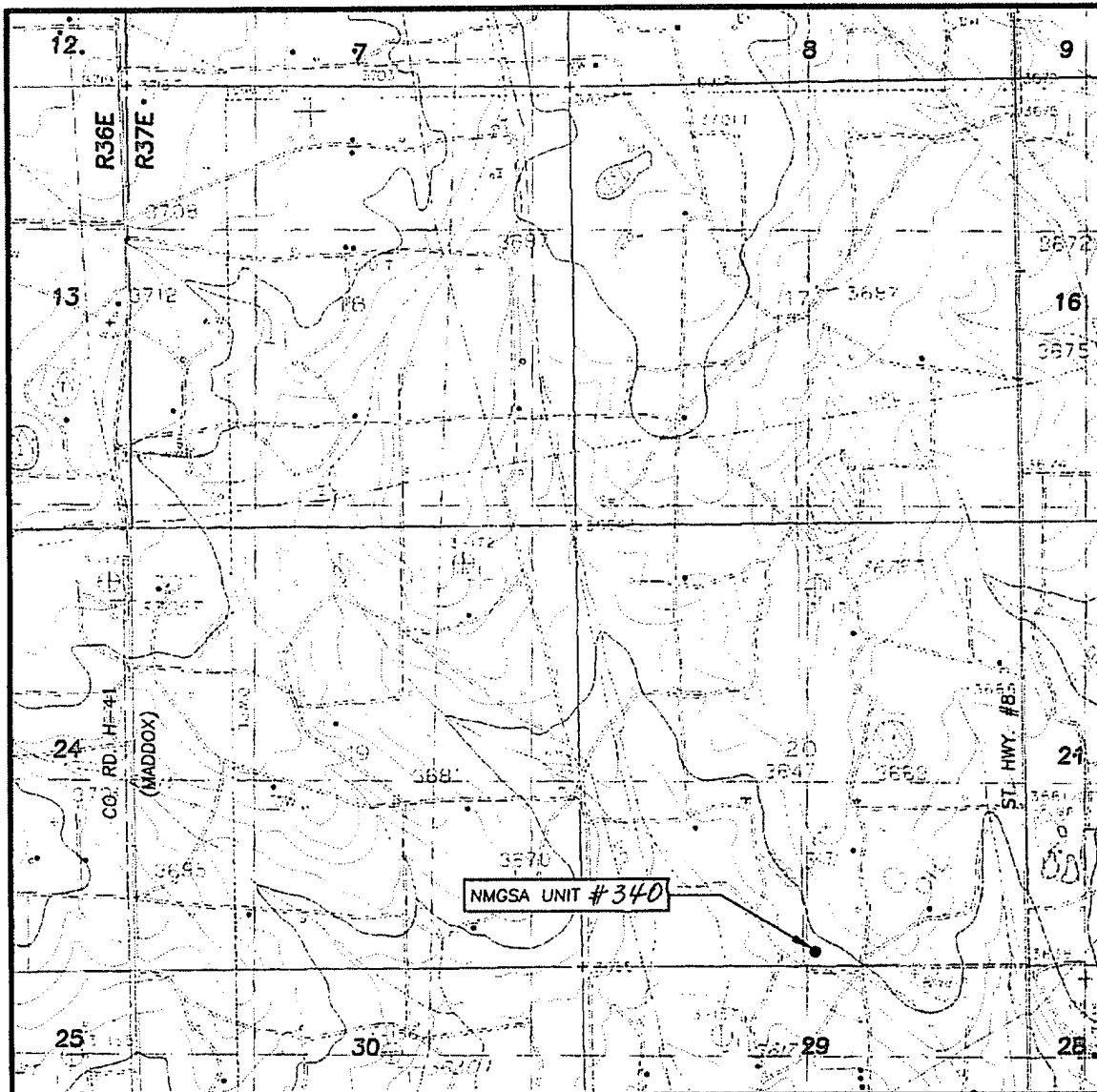
ELEVATION 3645'

OPERATOR APACHE CORPORATION

LEASE NMGSA UNIT



# LOCATION VERIFICATION MAP



SCALE: 1" = 2000'

CONTOUR INTERVAL:  
MONUMENT NORTH, N.M. - 10'  
(WITH 5' SUPPLEMENTARY CONTOUR INTERVALS)

SEC. 20 TWP. 19-S RGE. 37-E

SURVEY N.M.P.M.

COUNTY LEA STATE NEW MEXICO

DESCRIPTION 165' FSL & 2500' FEL

ELEVATION 3645'

OPERATOR APACHE CORPORATION

LEASE NMGSA UNIT

U.S.G.S. TOPOGRAPHIC MAP  
MONUMENT NORTH, N.M.

