

DISTRICT I

1325 N. VICTORY DR., ALBUQUERQUE, NM 87240

DISTRICT II

1301 W. GRAND AVENUE, ARTESIA, NM 88210

DISTRICT III

1000 Rio Brazos Rd., Aztec, NM 87410

DISTRICT IV

1220 S. ST. FRANCIS DR., SANTA FE, NM 87505

State of New Mexico

Energy, Minerals and Natural Resources Department

OIL CONSERVATION DIVISION
1220 SOUTH ST. FRANCIS DR.
Santa Fe, New Mexico 87505

Form C-102

Revised October 12, 2005

Submit to Appropriate District Office

State Lease - 4 Copies

Fee Lease - 3 Copies

WELL LOCATION AND ACREAGE DEDICATION PLAT

☐ AMENDED REPORT

API Number 30-025-37035	Pool Code 23000	Pool Name Eunice Monument GB/SA
Property Code 302708	Property Name NMGSA UNIT	Well Number 341
OGRID No. 873	Operator Name APACHE CORPORATION	Elevation 3644'

Surface Location

UL or lot No.	Section	Township	Range	Lot Idn	Feet from the	North/South line	Feet from the	East/West line	County
1	25	19-S	36-E		2559	SOUTH	259	EAST	LEA

Bottom Hole Location If Different From Surface

UL or lot No.	Section	Township	Range	Lot Idn	Feet from the	North/South line	Feet from the	East/West line	County
Dedicated Acres		Joint or Infill		Consolidation Code		Order No.			

NO ALLOWABLE WILL BE ASSIGNED TO THIS COMPLETION UNTIL ALL INTERESTS HAVE BEEN CONSOLIDATED
OR A NON-STANDARD UNIT HAS BEEN APPROVED BY THE DIVISION

<p>GEODETIC COORDINATES NAD 27 NME</p> <p>Y=594838.8 N X=818269.9 E</p> <p>LAT.=32°37'51.81" N LONG.=103°17'58.27" W</p>				<p>OPERATOR CERTIFICATION</p> <p>I hereby certify that the information herein is true and complete to the best of my knowledge and belief, and that this organization either owns a working interest or unleased mineral interest in the land including the proposed bottom hole location or has a right to drill this well at this location pursuant to a contract with an owner of such mineral or working interest, or to a voluntary pooling agreement or a compulsory pooling order heretofore entered by the division.</p> <p><i>Lana Williams</i> 4/13/06 Signature Date</p> <p><i>Lana Williams</i> Printed Name</p>	
				<p>SURVEYOR CERTIFICATION</p> <p>I hereby certify that the well location shown on this plat was plotted from field notes of actual surveys made by me or under my supervision, and that the same is true and correct to the best of my belief.</p> <p>MAY 05, 2006</p> <p>Date Surveyed MR</p> <p>Signature & Seal of Professional Surveyor</p> <p><i>Ronald E. Edson</i> 5/12/06 06.11.0764</p> <p>Certificate No. GARY-EDSON 12641 RONALD E. EDSON 3239</p>	

DISTRICT I
1625 N. FRENCH DR., BOHES, NM 88240

DISTRICT II
1301 W. GRAND AVENUE, ARTESIA, NM 88210

DISTRICT III
1000 Rio Brazos Rd., Aztec, NM 87410

DISTRICT IV
1220 S. ST. FRANCIS DR., SANTA FE, NM 87505

State of New Mexico
Energy, Minerals and Natural Resources Department

OIL CONSERVATION DIVISION
1220 SOUTH ST. FRANCIS DR.
Santa Fe, New Mexico 87505

Form C-102
Revised October 12, 2005
Submit to Appropriate District Office
State Lease - 4 Copies
Fee Lease - 3 Copies

WELL LOCATION AND ACREAGE DEDICATION PLAT

☐ AMENDED REPORT

API Number	Pool Code	Pool Name
Property Code	Property Name NMGSA UNIT	Well Number 341
OGRID No.	Operator Name APACHE CORPORATION	Elevation 3644'

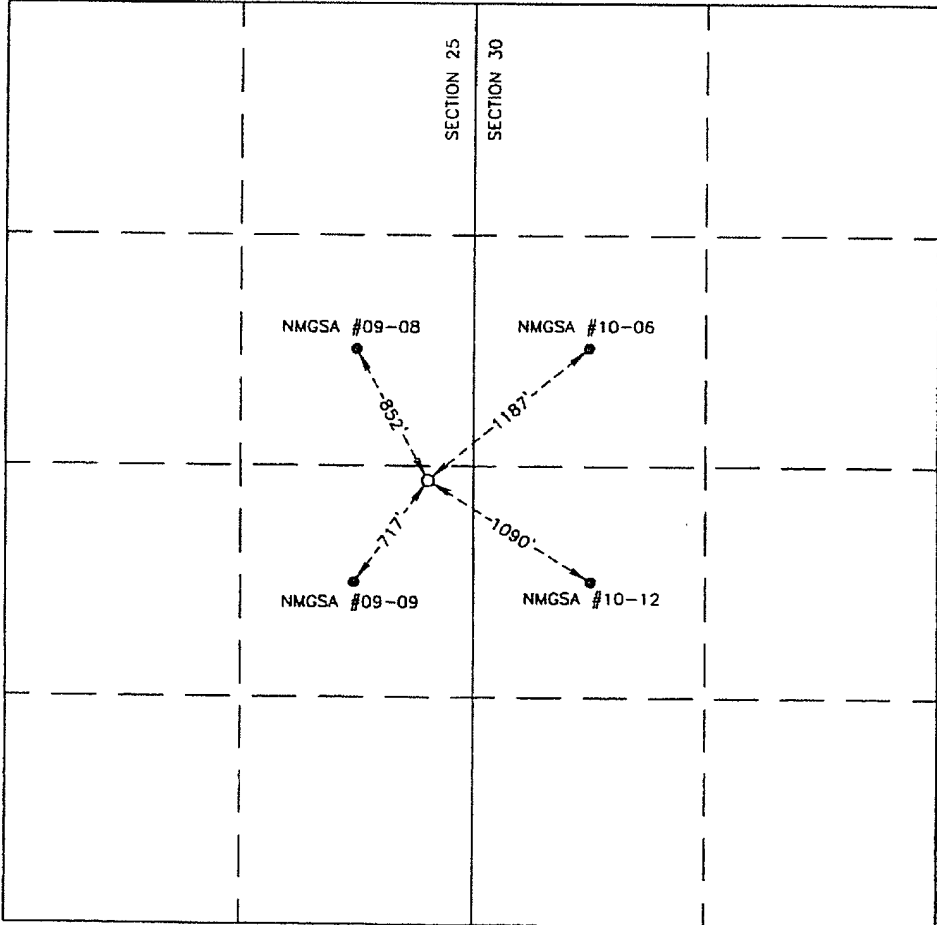
Surface Location

UL or lot No.	Section	Township	Range	Lot Idn	Feet from the	North/South line	Feet from the	East/West line	County
1	25	19-S	36-E		2559	SOUTH	259	EAST	LEA

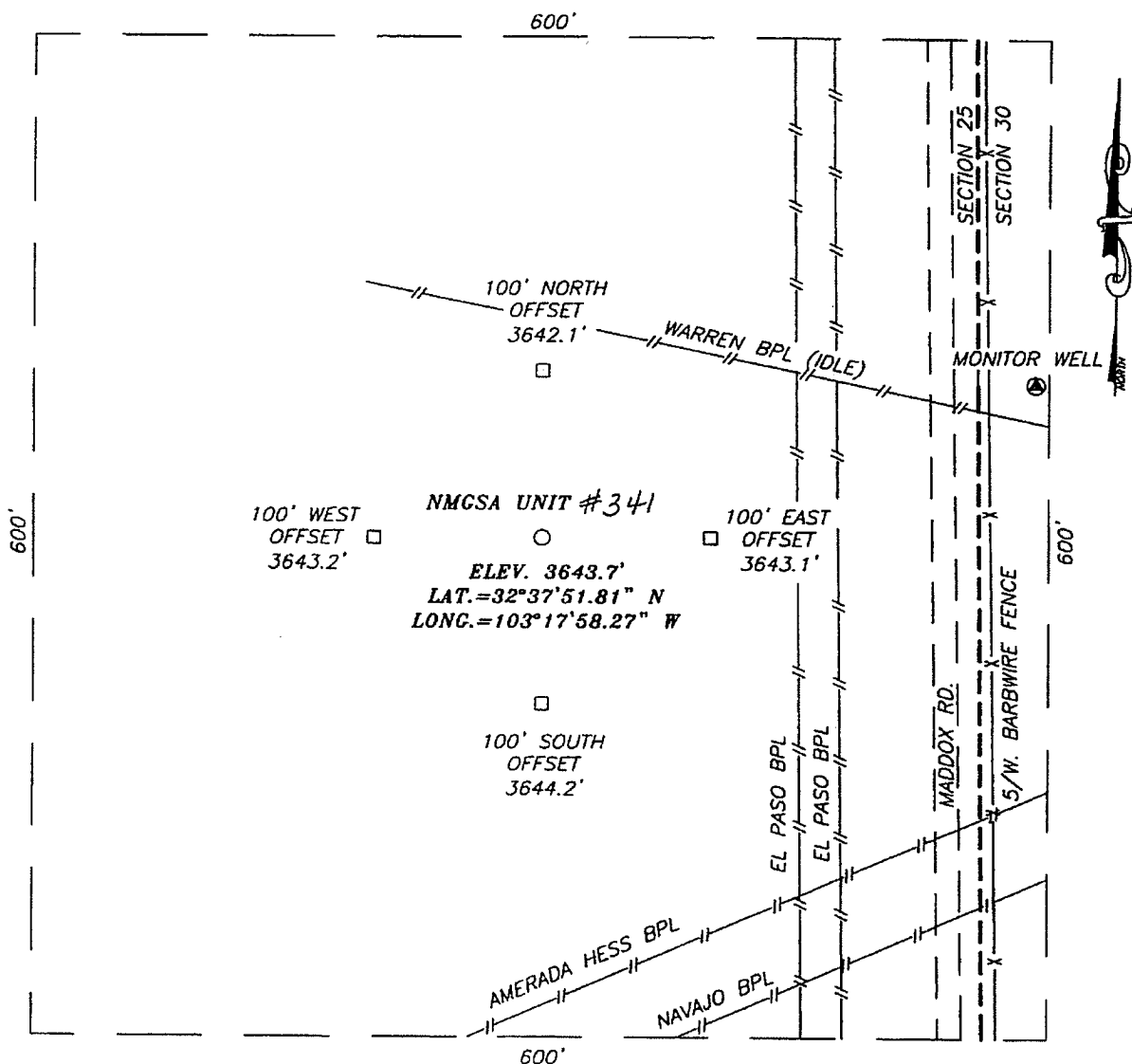
Bottom Hole Location If Different From Surface

UL or lot No.	Section	Township	Range	Lot Idn	Feet from the	North/South line	Feet from the	East/West line	County
Dedicated Acres	Joint or Infill	Consolidation Code	Order No.						

NO ALLOWABLE WILL BE ASSIGNED TO THIS COMPLETION UNTIL ALL INTERESTS HAVE BEEN CONSOLIDATED
OR A NON-STANDARD UNIT HAS BEEN APPROVED BY THE DIVISION

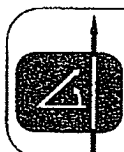
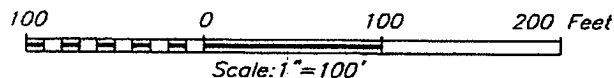
	OPERATOR CERTIFICATION <i>I hereby certify that the information herein is true and complete to the best of my knowledge and belief, and that this organization either owns a working interest or unleased mineral interest in the land including the proposed bottom hole location or has a right to drill this well at this location pursuant to a contract with an owner of such mineral or working interest, or to a voluntary pooling agreement or a compulsory pooling order heretofore entered by the division.</i> Signature _____ Date _____ Printed Name _____
	SURVEYOR CERTIFICATION <i>I hereby certify that the well location shown on this plat was plotted from field notes of actual surveys made by me or under my supervision, and that the same is true and correct to the best of my belief.</i> MAY 05, 2006 Date Surveyed _____ MR Signature & Seal of Professional Surveyor _____ 06.11.0764 Certificate No. GARY EIDSON 12641 RONALD J. EIDSON 3239

SECTION 25, TOWNSHIP 19 SOUTH, RANGE 36 EAST, N.M.P.M.,
LEA COUNTY, NEW MEXICO



DIRECTIONS TO LOCATION

FROM THE INTERSECTION OF CO. RD. H-41
(MADDOX RD.) AND CO. RD. H-43 (PEARL VALLEY
RD.), GO NORTH ON MADDOX RD. APPROX. 0.1
MILES. THIS LOCATION IS APPROX. 250 FEET WEST.



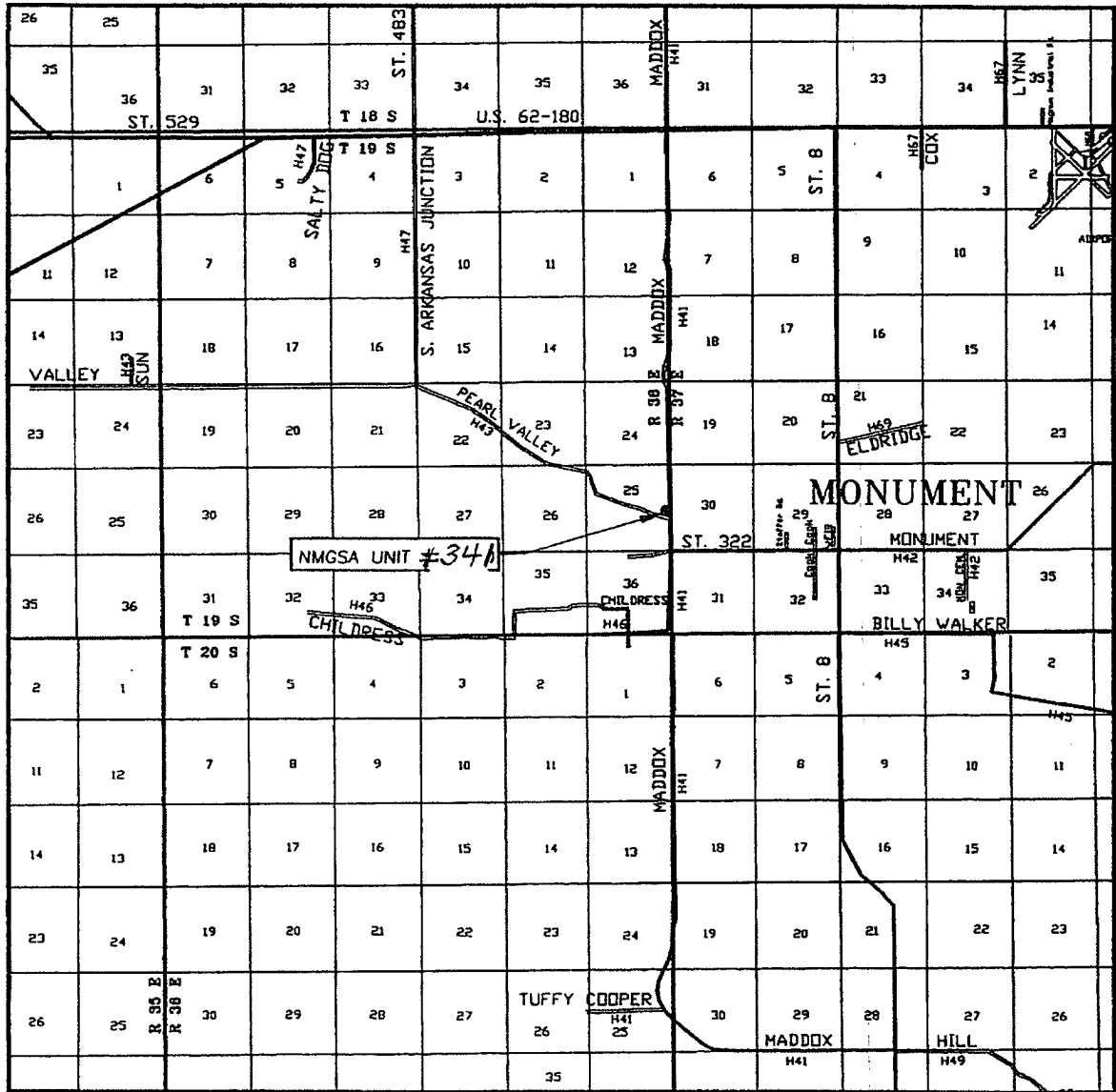
PROVIDING SURVEYING SERVICES
SINCE 1946
JOHN WEST SURVEYING COMPANY
412 N. DAL PASO
HOBBES, N.M. 88240
(505) 393-3117

APACHE CORPORATION

NMGSA UNIT #341
LOCATED 2559 FEET FROM THE SOUTH LINE
AND 259 FEET FROM THE EAST LINE OF SECTION 25,
TOWNSHIP 19 SOUTH, RANGE 36 EAST, N.M.P.M.,
LEA COUNTY, NEW MEXICO.

Survey Date: 05/05/06	Sheet 1 of 1 Sheets
W.O. Number: 06.11.0764	Dr. By: M.R.
Date: 05/11/06	Disk: CD#6
06110764	Scale: 1"=100'

VICINITY MAP



SCALE: 1" = 2 MILES

SEC. 25 TWP. 19-S RGE. 36-E

SURVEY N.M.P.M.

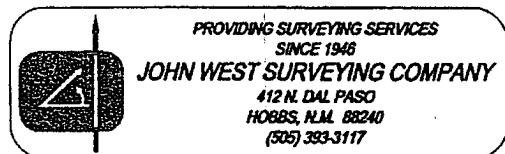
COUNTY LEA STATE NEW MEXICO

DESCRIPTION 2559' FSL & 259' FEL

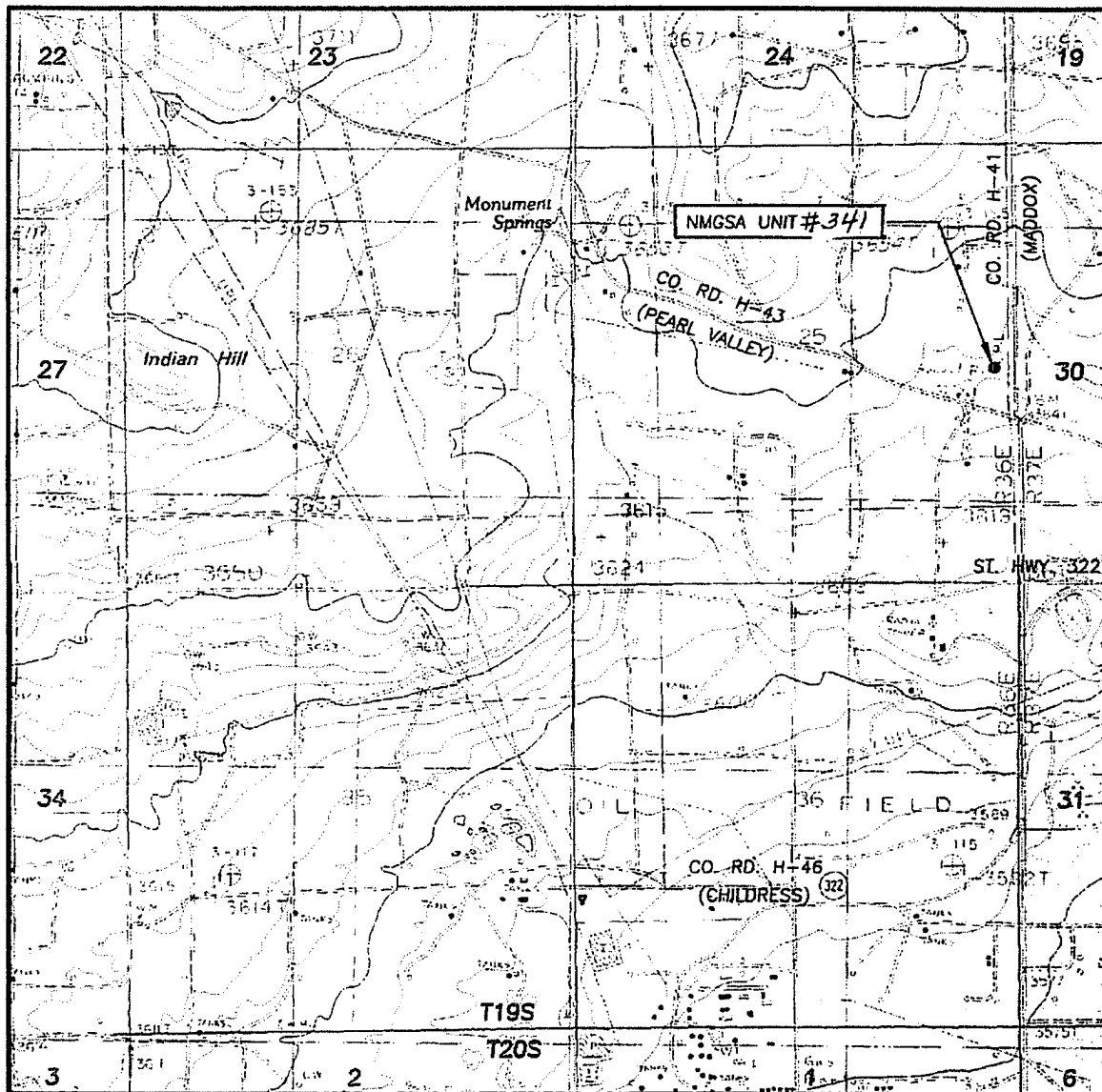
ELEVATION 3644'

OPERATOR APACHE CORPORATION

LEASE NMGSA UNIT



LOCATION VERIFICATION MAP



SCALE: 1" = 2000'

CONTOUR INTERVAL:
MONUMENT NORTH, N.M. - 5'
MONUMENT SOUTH, N.M. - 10'

SEC. 25 TWP. 19-S RGE. 36-E

SURVEY N.M.P.M.

COUNTY LEA STATE NEW MEXICO

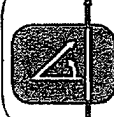
DESCRIPTION 2559' FSL & 259' FEL

ELEVATION 3644'

OPERATOR APACHE CORPORATION

LEASE NMGSA UNIT

U.S.G.S. TOPOGRAPHIC MAP
MONUMENT NORTH, N.M.



PROVIDING SURVEYING SERVICES
SINCE 1946
JOHN WEST SURVEYING COMPANY
412 N. DAL PASO
HOBBS, N.M. 88240
(505) 393-3117