

JUL 28 2011

30-025-40212

RECEIVED

SURFACE USE PLAN OF OPERATION

SHL: 170' FNL & 430' FEL, Unit A, Section 26, T26S-R33E, N.M.P.M., Lea, NM
BHL: 330' FSL & 440' FEL, Lot 1, Section 35, T26S-R33E, N.M.P.M., Lea, NM

1. EXISTING ROADS:

- a. The well site and elevation plat for the proposed well are reflected on the well site layout; Form C-102. The well was staked by Terry Asel, RPL 15079.
- b. All roads into the location are depicted on Exhibits 2, 2a and 5.
- c. Directions to Locations: Beginning in Jal, NM at the intersection of N.M. State Hwy 128 and Hwy 18, go west on Hwy 128 for 14.1 miles to County Road #2 (Battle Ax Road), turn left and go south/southwest on County Road #2 for 13.6 miles, turn left on Lea County J2 (Dinwiddie Road) and go southeast for 0.8 miles, turn left and go south and east on lease road for 1.4 miles, turn right and go south for 2.8 miles, turn right and go northwest on proposed road for 0.3 miles to location.

2. NEW OR RECONSTRUCTED ACCESS ROAD:

- a. The well site layout, Exhibit 2a shows the layout. A new access road will be constructed a distance of (1,434.3') of compact caliche as depicted per Exhibit 5. A SF-299 will be submitted to the Realty Department for that portion of the new road located "off-lease" in Section 25.
- b. The maximum width of the road will be 15'. It will be crowned and made of 6" of rolled and compacted caliche. Water will be deflected, as necessary, to avoid accumulation and prevent soil erosion.
- c. Surface material will be native caliche. This material will be obtained from a BLM approved pit nearest in proximity to the location. The average grade will be approximately 1%.
- d. No cattleguards, gates or fence cuts will be required. No turnouts are planned.

3. LOCATION OF EXISTING WELLS:

Exhibit #3 shows all existing wells within a one-mile radius of this well.

4. LOCATION OF EXISTING AND/OR PROPOSED PRODUCTION FACILITIES:

- a. In the event the well is found to be productive, the necessary production equipment will be installed on location as depicted by the Production Facility Layout. This well location will serve as the Central Tank Battery for both the Fram 26 Fed 1H & 2H well locations.

AUG 03 2011

EOG RESOURCES, INC.
FRAM 26 FED 1H

- b. As a proposed oil well, operator shall construct a power line as depicted by Exhibit 6. A SF-299 will be submitted to the Realty Department for that portion of the power line located “off-lease” in Section 25.
- c. All Pipelines will adhere to API standards. Applicant will lay a 4” surface poly Gas Sales Pipeline, a 4” surface poly Gas Lift Pipeline and two (2) 4” surface poly SWD pipelines as depicted on Exhibit 7. A SF-299 will be submitted to the Realty Department for that portion of the Gas Sales Pipeline, Gas Lift Pipeline and SWD Pipelines located “off-lease” in Section 25
- d. Refer to b above.
- e. If the well is productive, rehabilitation plans are as follows:
 - i. The location shall be reduced on the North and West Sides of the location as depicted by the Production Facilities Layout. The interim reclamation will be performed when optimal conditions exist during the growing season as per the interim reclamation guidelines of the BLM.
 - ii. The original topsoil from the well site will be returned to the location. The location will be contoured as close as possible to match the original topography.

5. LOCATION AND TYPE OF WATER SUPPLY:

This location will be drilled using a combination of water mud systems (outlined in the drilling program). The water will be obtained from commercial water stations in the area and transported by 4” poly pipeline to location by following alongside existing roads or established utility corridors. Haul trucks may also be used. If poly pipeline is used to transport fresh water to the location, proper authorization will be secured by the contractor.

6. CONSTRUCTION MATERIALS

Obtaining Mineral Material – Caliche utilized for the drilling pad and proposed access road will be obtained either from an existing approved pit, or by benching into a hill which will allow the pad to level with existing caliche from cut, or extracted by “flipping” the location. A caliche permit shall be obtained from the BLM prior to excavating any caliche on Federal Lands. Amount will vary for each pad. The procedure for “flipping” the location is as follows:

- 1. An adequate amount of topsoil for final reclamation will be stripped from the well location surface and stockpiled along the edge of the location as shown in the well site layout.
- 2. An area will be used within the proposed well site to excavate caliche.
- 3. The subsoil will then be removed and stockpiled within the footages of the well location.
- 4. Once caliche/mineral material is found, the material will be excavated and stockpiled within the footages of the well location.

EOG RESOURCES, INC.
FRAM 26 FED 1H

5. The subsoil will then be placed back in the excavated hole.
6. Caliche/mineral material will then be placed over the entire pad and/or road to be compacted.

In the event that caliche is not found on site, a permit will be acquired if caliche is obtained from a BLM approved caliche pit

7. METHODS OF HANDLING WASTE MATERIALS

- a. Drill cuttings shall be disposed of in a steel cuttings bin (catch tanks) on the drilling pad (behind the steel mud tanks). The bin and cuttings shall be hauled to an approved cuttings dumpsite.
At the site, the cuttings shall be removed from the bin & the bin shall be returned to the drilling site for reuse.
- b. All trash, junk, and other waste material shall be contained in trash cages or trash bins to prevent scattering. When a job is completed, all contents shall be removed and disposed of in an approved landfill.
- c. The supplier, including broken sacks, shall pick up salts remaining after completion of well.
- d. If necessary, a porto-john shall be provided for the rig crews. This equipment shall be properly maintained during the drilling and completion operations and shall be removed when all operations are complete.
- e. Remaining drilling fluids shall be hauled off by transports to a state approved disposal site. Water produced during completion shall be put in storage tanks and disposed of in a state approved disposal. Oil and condensate produced shall be put in a storage tank and sold.
- f. Disposal of fluids to be transported by the following companies:
 - i. RGB TRUCKING
 - ii. LOBO TRUCKING
 - iii. I & W TRUCKING
 - iv. CRANE HOT OIL & TRANSPORT
 - v. JWS
 - vi. QUALITY TRUCKING

8. ANCILLARY FACILITIES:

- a. No airstrip, campsite, or other facilities will be built.

9. WELL SITE LAYOUT:

- a. Exhibit 4 shows the proposed location of reserve and sump pits, living facilities and well site layout with dimensions of the pad layout.

EOG RESOURCES, INC.
FRAM 26 FED 1H

- b. Mud pits in the active circulating system shall be steel pits and the catch tanks shall be steel tanks set in shallow sumps behind the steel circulating tanks and sumps.
- c. The area where the catch tanks are placed shall be reclaimed and the surface vegetation restored to as or near the same condition that existed prior to operations.

10. PLANS FOR SURFACE RECLAMATION:

- a. After concluding the drilling and/or completion operations, if the well is found non-commercial, the caliche shall be removed from the pad and transported to the original caliche pit or used for other drilling locations and roads. The road shall be reclaimed and the surface vegetation restored to as or near the same condition that existed prior to operations. The catch tank area shall be broken out and leveled after drying to a condition where these are feasible. The original topsoil shall again be returned to the pad and contoured, as close as possible, to the original topography.
- b. After the well is plugged and abandoned, the location and road shall be reclaimed and the surface vegetation restored to as or near the same condition that existed prior to operations.
- c. If the well is deemed commercially productive, the catch tank area shall be restored as described in 4(e)(i). Caliche from areas of the pad site not required for operations shall be reclaimed. The original topsoil shall be returned to the area of the drill pad not necessary to operate the well. These unused areas of the drill pad shall be contoured, as close as possible, to match the original topography.

11. SURFACE OWNERSHIP

The surface is owned by the Bureau of Land Management. The surface is multiple use with the primary uses of the region for the grazing of livestock and the production of oil and gas.

12. OTHER INFORMATION:

- a. The area surrounding the well is mesquite and tar brush. The topsoil is sandy in nature. The vegetation is moderately sparse with native prairie grass, cactus and shinnery oak. No wildlife was observed but it is likely that deer, rabbits, coyotes, birds and rodents transverse the area.
- b. There are not dwellings within 2 miles of location.

**EOG RESOURCES, INC.
FRAM 26 FED 1H**

c. Applicant will participate in the MOA.

13. BOND COVERAGE:

a. Bond Coverage is Nationwide; Bond No. NM 2308

COMPANY REPRESENTATIVES:

Representatives responsible for ensuring compliance of the surface use plan are listed below:

Land and Right of Way

Mr. Donny G. Glanton
Senior Lease Operations ROW Representative
EOG Resources, Inc.
P.O. Box 2267
Midland, TX 79702
(432) 686-3642 Office
(432) 770-0602 Cell

Drilling

Mr. Steve Munsell
Drilling Engineer
EOG Resources, Inc.
P.O. Box 2267
Midland, TX 79702
(432) 686-3609 Office
(432) 894-1256 Cell

Operations

Mr. Howard Kemp
Production Manager
EOG Resources, Inc.
P.O. Box 2267
Midland, TX 79702
(432) 686-3704 Office
(432) 634-1001 Cell

Regulatory

Mr. Stan Wagner
Regulatory Analyst
EOG Resources, Inc.
P.O. Box 2267
Midland, TX 79702
(432) 686-3689 Office

HOBBS OCD

JUL 28 2011

RECEIVED

OPERATOR CERTIFICATION

I certify that I, or someone under my direct supervision, have inspected the drill site and access route proposed herein; that I am familiar with the conditions that presently exist; that I have full knowledge of State and Federal Laws applicable to this operation; that the statements made in this APD package are, to the best of my knowledge, true, and correct; and that the work associated with the operations proposed herein will be performed in conformity with this APD package and the terms and conditions under which it is approved. I also certify that I, or the company I represent, am responsible for the operations conducted under this application. These statements are subject to the provisions of 18 U.S.C. 1001 for the filing of false statements. Executed this 22nd day of November 2010.

Name: Donny G. Glanton

Position: Sr. Lease Operations ROW Representative

Address: P.O. Box 2267 Midland, TX 79705

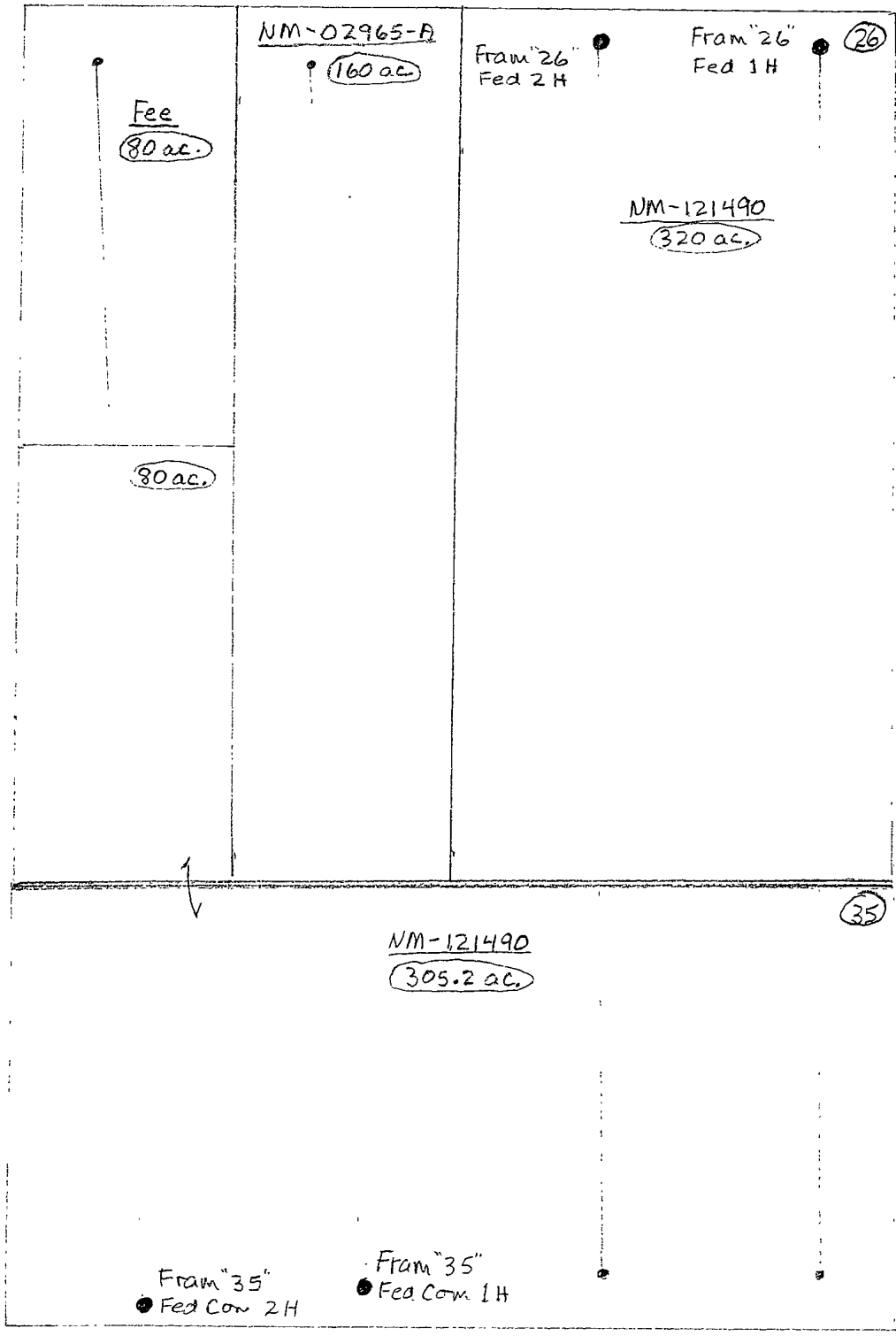
Telephone: 432-686-3642

Email: donny_glanton@eogresources.com

Signed: _____

Donny G. Glanton

T26S-R33E
 Lea Co., NM

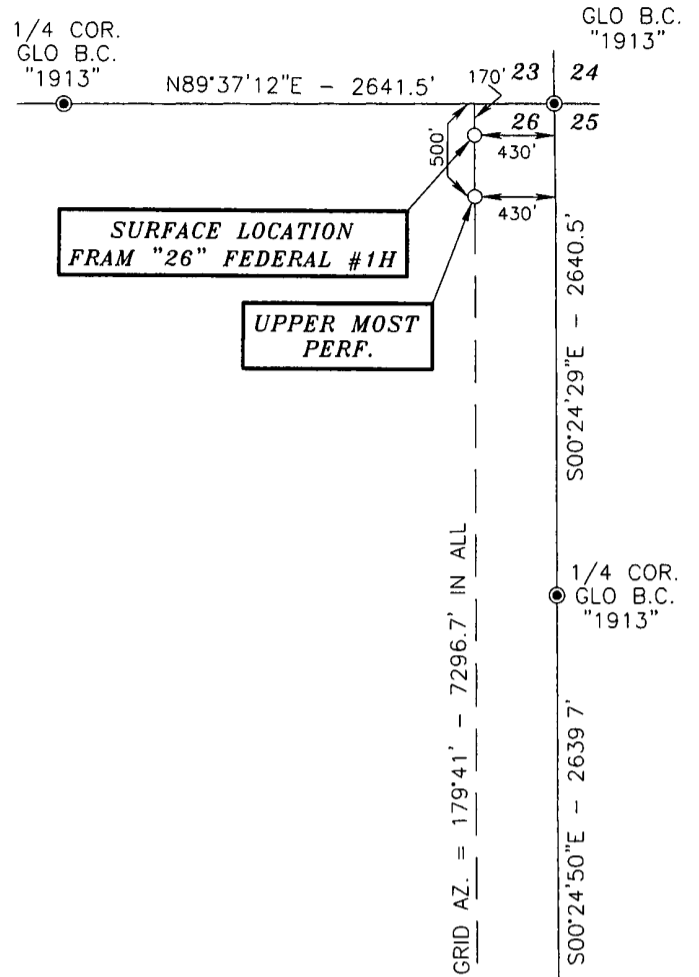


	Dedicated Acres
Fram 26 Fed 1 H	236.22 ac
Fram 26 Fed 2 H	236.28 ac
Fram 35 Fed Com 1 H	236.32 ac
Fram 35 Fed Com 2 H	236.38 ac
	<u>945.20</u>

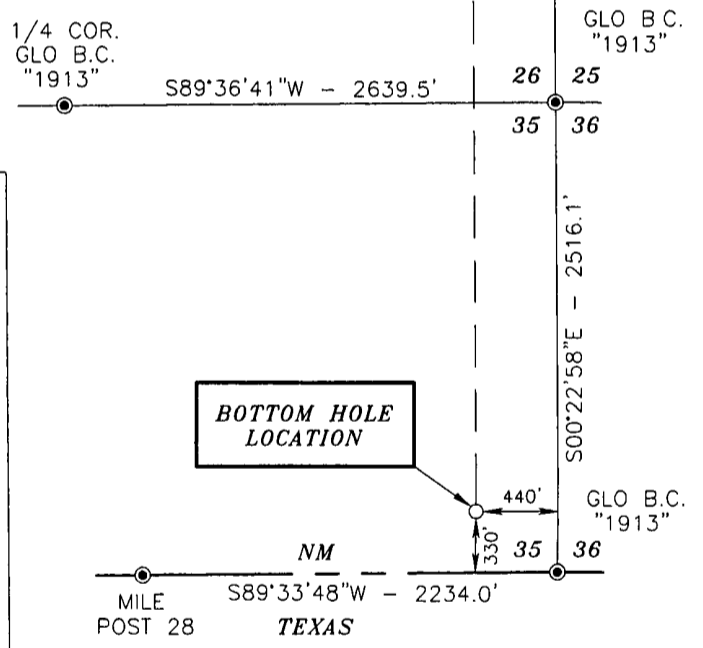
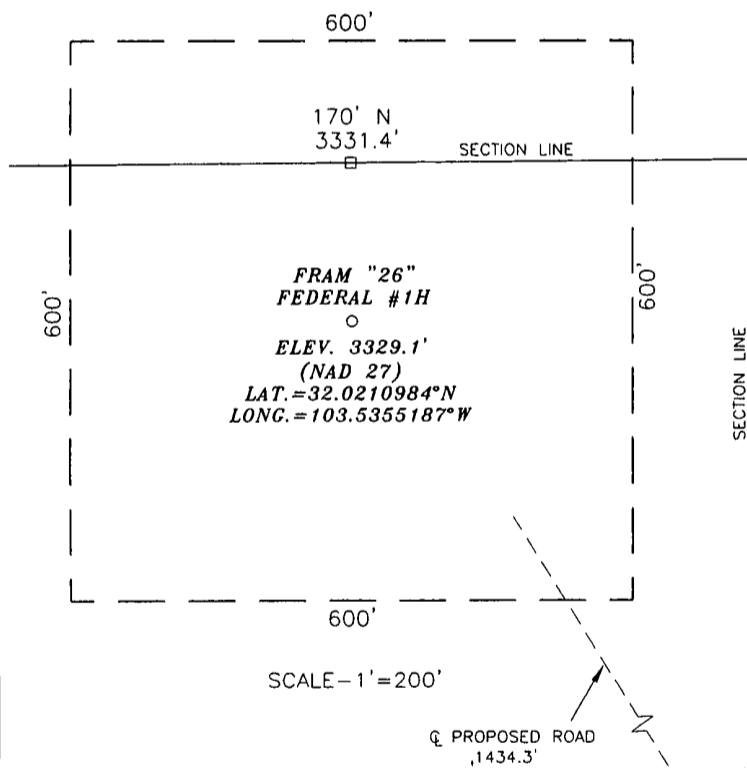
SECTIONS 26 & 35, TOWNSHIP 26 SOUTH, RANGE 33 EAST, N.M.P.M.,
LEA COUNTY NEW MEXICO

Exhibit 2a

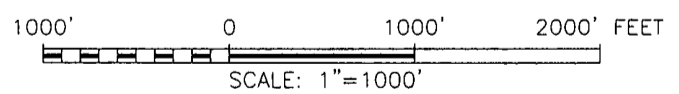
Basis of Bearings - GPS Geodetic Measurements
 NM East Zone (83) North American Datum of 1983



DIRECTIONS:
 BEGINNING IN JAL AT THE INTERSECTION OF N.M. STATE HWY. #18 AND N.M. STATE HWY. #128, GO WEST ON N.M. STATE HWY. #128 FOR 14.1 MILES TO COUNTY ROAD #2 (BATTLE AXE ROAD), TURN LEFT AND GO SOUTH/SOUTHWEST FOR 13.6 MILES, TURN LEFT ON LEA CO. ROAD #J2 (DINWIDDIE ROAD) AND GO SOUTHEAST FOR 0.8 MILES, TURN LEFT AND GO SOUTH AND EAST ON LEASE ROAD FOR 1.4 MILES, TURN RIGHT AND GO SOUTH FOR 2.8 MILES, TURN RIGHT AND GO NORTHWEST ON PROPOSED ROAD FOR 0.3 MILES TO LOCATION.



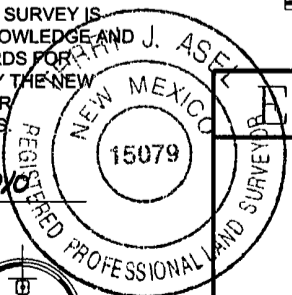
LEGEND
 ● - DENOTES FOUND MONUMENT AS NOTED



SURVEYORS CERTIFICATE

I, TERRY J. ASEL, NEW MEXICO PROFESSIONAL SURVEYOR NO. 15079, DO HEREBY CERTIFY THAT I CONDUCTED AND AM RESPONSIBLE FOR THIS SURVEY, THAT THIS SURVEY IS TRUE AND CORRECT TO THE BEST OF MY KNOWLEDGE AND BELIEF, AND MEETS THE "MINIMUM STANDARDS FOR SURVEYING IN NEW MEXICO" AS ADOPTED BY THE NEW MEXICO STATE BOARD OF REGISTRATION FOR PROFESSIONAL ENGINEERS AND SURVEYORS.

Terry J. Asel 11/4/2010
 Terry J. Asel N.M. R.P.S. No. 15079



Asel Surveying

P.O. BOX 393 - 310 W. TAYLOR
 HOBBS, NEW MEXICO - 575-393-9146

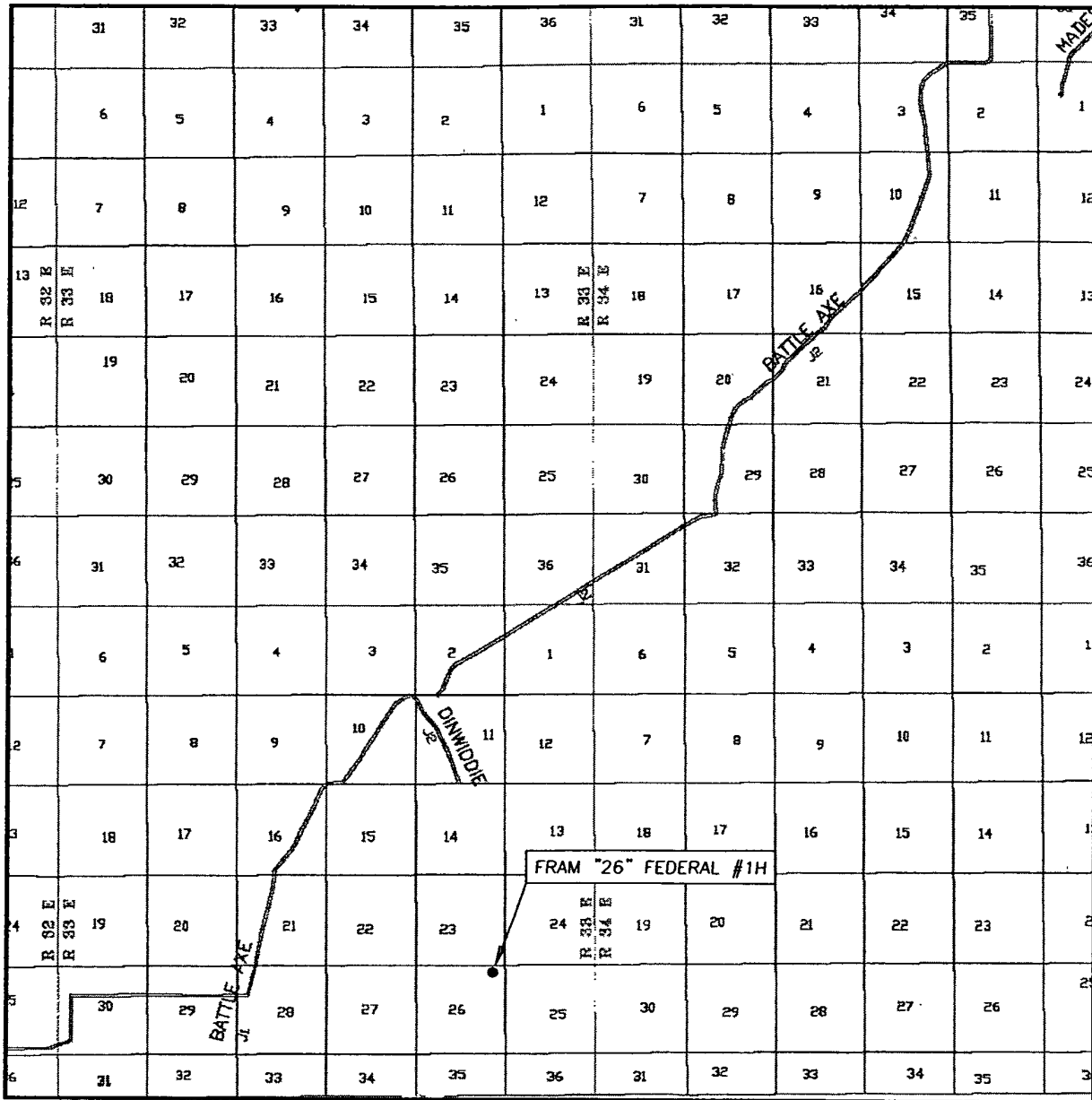
LOG RESOURCES, INC.

FRAM "26" FEDERAL #1H LOCATED AT 170' FNL & 430' FEL OF SECTION 26, TOWNSHIP 26 SOUTH, RANGE 33 EAST, N.M.P.M., LEA COUNTY, NEW MEXICO

Survey Date: 11/02/10	Sheet 1 of 1 Sheets
W.O. Number: 101102WL-a	Drawn By: KA Rev:
Date: 11/09/10	101102WL-a Scale: 1"=1000'

Exhibit 2

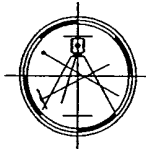
VICINITY MAP



SEC. 26 TWP. 26-S RGE. 33-E
 SURVEY N.M.P.M.
 COUNTY LEA
 DESCRIPTION 170' FNL & 430' FEL
 ELEVATION 3329.1
 OPERATOR EOG RESOURCES, INC.
 LEASE FRAM "26" FEDERAL #1H

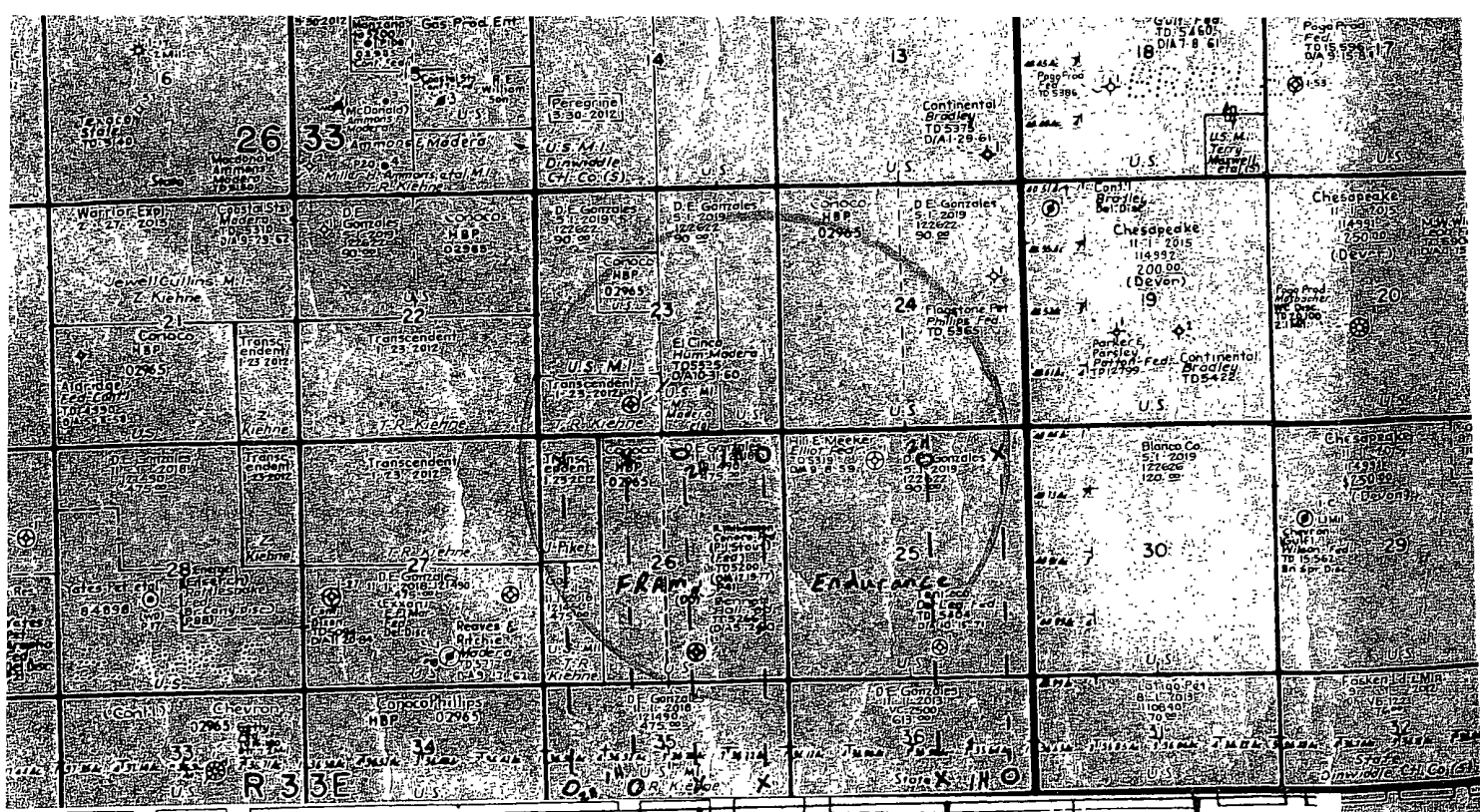
SCALE: 1" = 2 MILES

Asel Surveying



P.O. BOX 393 - 310 W. TAYLOR
 HOBBS, NEW MEXICO - 575-393-9146

DIRECTIONS BEGINNING IN JAL AT THE INTERSECTION OF N.M. STATE HWY. #18 AND N.M. STATE HWY. #128, GO WEST ON N.M. STATE HWY. #128 FOR 14.1 MILES TO COUNTY ROAD #2 (BATTLE AXE ROAD), TURN LEFT AND GO SOUTH/SOUTHWEST FOR 13.6 MILES, TURN LEFT ON LEA CO. ROAD #J2 (DINWIDDIE ROAD) AND GO SOUTHEAST FOR 0.8 MILES, TURN LEFT AND GO SOUTH AND EAST ON LEASE ROAD FOR 1.4 MILES, TURN RIGHT AND GO SOUTH FOR 2.8 MILES, TURN RIGHT AND GO NORTHWEST ON PROPOSED ROAD FOR 0.3 MILES TO LOCATION.



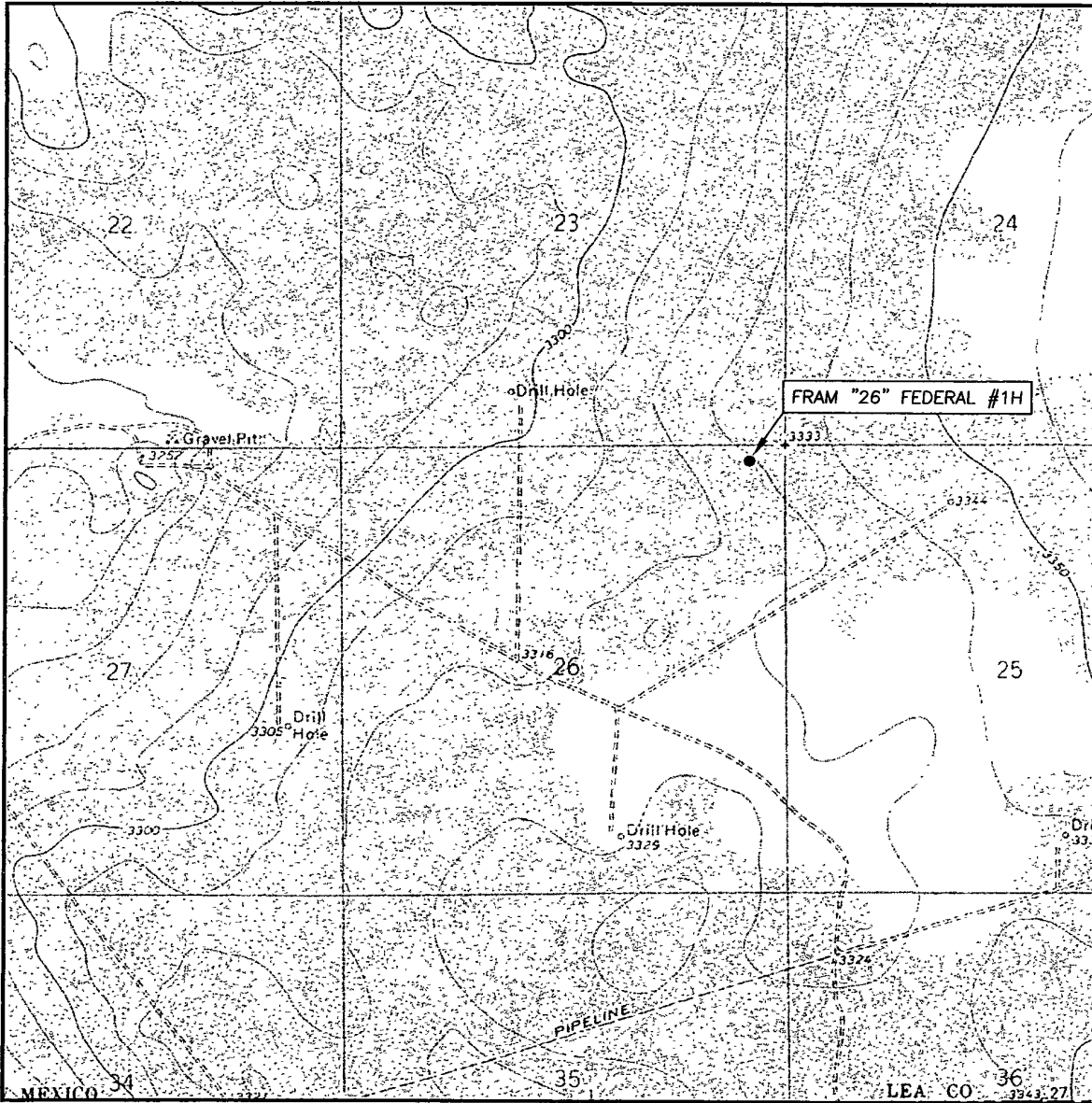
6	5	4	3	2	1
<p>6</p> <p>Trail Mtn Texaco Langdon 18 30 09 DIA 18 33</p> <p>ss Ld & Cat</p> <p>Six Cross Ld & Cat</p> <p>J Verkooyen</p>	<p>5</p> <p>H M Va</p> <p>United Global Network</p> <p>S Greiver</p> <p>(Chevron) Chesapeake 9 30 2009</p> <p>Anadarko 11 1 2007 (2009) 8 1 2009</p> <p>Chevron, M.I. J.M. Morales</p> <p>Six Cross Ld & Cat</p>	<p>4</p> <p>Hille Meeker</p> <p>Madera T05292</p> <p>DIA 30-60</p> <p>S F Clinton</p> <p>Chesapeake 9 30 2009</p> <p>Anadarko 11 1 2007 (2009) 8 1 2009</p> <p>R.J Bacon</p> <p>A 1221</p>	<p>3</p> <p>Chesapeake 30 2009</p> <p>S F Clinton</p> <p>E Bacety</p> <p>Chesapeake 9 30 2009</p> <p>Anadarko 11 1 2007 (2009) 8 1 2009</p> <p>FG Orwanya</p> <p>A 1220</p>	<p>2</p> <p>DB -aski</p> <p>Chesapeake 9 30 2009</p> <p>Anadarko 11 1 2007 (2009) 8 1 2009</p> <p>FG Orwanya</p> <p>A 1220</p>	<p>1</p> <p>Six Cross Ld & Cat</p> <p>Chesapeake 9 30 2009</p> <p>Anadarko 11 1 2007 (2009) 8 1 2009</p> <p>SEC</p>
7	8	9	10	11	12
<p>7</p> <p>Chevron, M.I. N2E, SE1/4</p> <p>R H Hensley III</p> <p>A 1222</p>	<p>8</p> <p>H Valdez, et al</p> <p>P Matousek, et al</p> <p>Chesapeake 9 30 2009</p> <p>Anadarko 11 1 2007 (2009) 8 1 2009</p> <p>Chevron, M.I.</p> <p>Six Cross Ld & Cat</p>	<p>9</p> <p>Harper Oil</p> <p>EOG Res. 1 18 2006 to B5PG base all sec Chesapeake 9 30 2009 all sec</p> <p>Anadarko 11 1 2007 (2009) 8 1 2009</p> <p>Chevron, M.I.</p> <p>Pride 'N Texas Land</p> <p>A 1225</p>	<p>10</p> <p>EOG Res. 1 18 2006 to B5PG base all sec Chesapeake 9 30 2009 all sec</p> <p>Anadarko 11 1 2007 (2009) 8 1 2009</p> <p>Chevron, M.I.</p> <p>M L Folino</p> <p>A 1228</p>	<p>11</p> <p>Six Cross Ld & Cat</p> <p>Chesapeake 9 30 2009</p> <p>Anadarko 11 1 2007 (2009) 8 1 2009</p> <p>J E II</p>	<p>12</p> <p>Chesapeake 9 30 2009</p> <p>Anadarko 11 1 2007 (2009) 8 1 2009</p> <p>J E II</p>
13	14	15	16	17	18
<p>13</p> <p>EOG Res. 1 18 2006 to B5PG base all sec Chesapeake 9 30 2009 all sec</p> <p>R. Nunez, Ltd</p>	<p>14</p> <p>Kathy Orr</p> <p>L. Pierre</p> <p>Anadarko 11 1 2007 (2009) 8 1 2009</p> <p>Anadarko 11 1 2007 (2009) 8 1 2009</p> <p>Kimberly Sharp</p>	<p>15</p> <p>Amanda Bergthold</p> <p>Six Cross Ld & Cat</p> <p>EOG Res. 1 18 2006 to B5PG base</p> <p>Chesapeake 9 30 2009</p> <p>Anadarko 11 1 2007 (2009) 8 1 2009</p> <p>S Neerukonda</p> <p>A 1232</p>	<p>16</p> <p>Kimberly Sharp</p> <p>S Neerukonda</p> <p>A 1232</p>	<p>17</p> <p>Chesapeake 9 30 2009</p> <p>Anadarko 11 1 2007 (2009) 8 1 2009</p> <p>Chevron, M.I.</p> <p>Six Cross Ld & Cat</p>	<p>18</p> <p>Chesapeake 9 30 2009</p> <p>Anadarko 11 1 2007 (2009) 8 1 2009</p> <p>Chesapeake 9 30 2009</p> <p>Anadarko 11 1 2007 (2009) 8 1 2009</p> <p>D. McPherson</p> <p>A-1230</p> <p>J E II</p>
19	20	21	22	23	24
<p>19</p> <p>EOG Res. 1 18 2006 to B5PG base</p> <p>Chesapeake 9 30 2009</p> <p>Anadarko 11 1 2007 (2009) 8 1 2009</p> <p>Chesapeake 9 30 2009</p> <p>Anadarko 11 1 2007 (2009) 8 1 2009</p> <p>Six Cross Ld & Cat</p>	<p>20</p> <p>Chesapeake 9 30 2009</p> <p>Anadarko 11 1 2007 (2009) 8 1 2009</p> <p>Chesapeake 9 30 2009</p> <p>Anadarko 11 1 2007 (2009) 8 1 2009</p> <p>Six Cross Ld & Cat</p>	<p>21</p> <p>Chesapeake 9 30 2009</p> <p>Anadarko 11 1 2007 (2009) 8 1 2009</p> <p>Six Cross Ld & Cat</p>	<p>22</p> <p>S P Davis</p> <p>Johnetta Nunez</p> <p>J.W. Largent</p> <p>D. Reese</p>	<p>23</p> <p>Chesapeake 9 30 2009</p> <p>Anadarko 11 1 2007 (2009) 8 1 2009</p> <p>Chesapeake 9 30 2009</p> <p>Anadarko 11 1 2007 (2009) 8 1 2009</p> <p>Six Cross Ld & Cat</p>	<p>24</p> <p>Chesapeake 9 30 2009</p> <p>Anadarko 11 1 2007 (2009) 8 1 2009</p> <p>Chesapeake 9 30 2009</p> <p>Anadarko 11 1 2007 (2009) 8 1 2009</p> <p>J.E. White</p> <p>Madera T04424</p> <p>A 1234</p>
25	26	27	28	29	30
<p>25</p> <p>Chesapeake 9 30 2009</p> <p>Anadarko 11 1 2007 (2009) 8 1 2009</p> <p>Chesapeake 9 30 2009</p> <p>Anadarko 11 1 2007 (2009) 8 1 2009</p> <p>Six Cross Ld & Cat</p>	<p>26</p> <p>Chesapeake 9 30 2009</p> <p>Anadarko 11 1 2007 (2009) 8 1 2009</p> <p>Chesapeake 9 30 2009</p> <p>Anadarko 11 1 2007 (2009) 8 1 2009</p> <p>Six Cross Ld & Cat</p>	<p>27</p> <p>Chesapeake 9 30 2009</p> <p>Anadarko 11 1 2007 (2009) 8 1 2009</p> <p>Chesapeake 9 30 2009</p> <p>Anadarko 11 1 2007 (2009) 8 1 2009</p> <p>Six Cross Ld & Cat</p>	<p>28</p> <p>Chesapeake 9 30 2009</p> <p>Anadarko 11 1 2007 (2009) 8 1 2009</p> <p>Chesapeake 9 30 2009</p> <p>Anadarko 11 1 2007 (2009) 8 1 2009</p> <p>Six Cross Ld & Cat</p>	<p>29</p> <p>Chesapeake 9 30 2009</p> <p>Anadarko 11 1 2007 (2009) 8 1 2009</p> <p>Chesapeake 9 30 2009</p> <p>Anadarko 11 1 2007 (2009) 8 1 2009</p> <p>Six Cross Ld & Cat</p>	<p>30</p> <p>Chesapeake 9 30 2009</p> <p>Anadarko 11 1 2007 (2009) 8 1 2009</p> <p>Chesapeake 9 30 2009</p> <p>Anadarko 11 1 2007 (2009) 8 1 2009</p> <p>Six Cross Ld & Cat</p>

EXHIBIT 3
 Fram 26 Federal 1H
 170' FNL & 430' FEL, U/L A (SHL)
 Sec 26, T26S, R33E
 330' FSL & 440' FEL, U/L H
 Sec 35, T26S, R33E Lea County, NM

BLK 76

LOVIN

LOCATION VERIFICATION MAP



SCALE: 1" = 2000'

CONTOUR INTERVAL: 10'

SEC. 26 TWP. 26-S RGE. 33-E

SURVEY N.M.P.M.

COUNTY LEA

DESCRIPTION 170' FNL & 430' FEL

ELEVATION 3329.1'

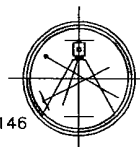
OPERATOR EOG RESOURCES, INC.

LEASE FRAM "26" FEDERAL #1H

U.S.G.S. TOPOGRAPHIC MAP
PADUCA BREAKS EAST, N.M.

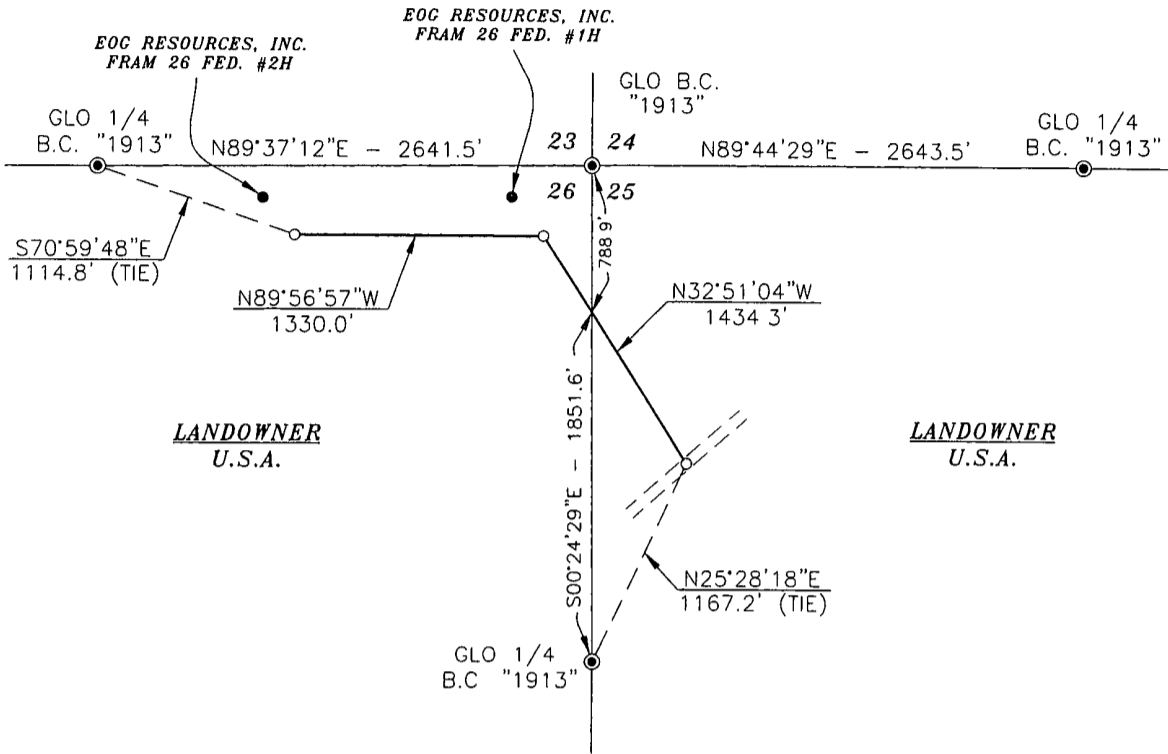
Asel Surveying

P.O. BOX 393 - 310 W. TAYLOR
 HOBBS, NEW MEXICO - 575-393-9146



SECTIONS 25 & 26, TOWNSHIP 26 SOUTH, RANGE 33 EAST, N.M.P.M.,
LEA COUNTY
NEW MEXICO

Exhibit 5



Basis of Bearings - GPS Geodetic Measurements
 NM East Zone (83) North American Datum of 1983

27+64.3 END SURVEY @
 EOG RESOURCES, INC.
 FRAM 26 FED. #2H
 NAD 27 LAT. = 32°01'13.98"N
 LONG. = 103°32'21.34"W
 14+34.3 P.I. 57°05'53" LT
 13+98.6 PROPOSED ELECTRIC LINE
 9+49.7 N-S SECTION LINE
 0+00.0 BEGIN SURVEY @
 EXISTING ROAD
 NAD 27 LAT. = 32°01'01.89"N
 LONG. = 103°31'56.96"W

DESCRIPTION

A STRIP OF LAND 30.0 FEET WIDE AND 2764.3 FEET OR 0.524 MILES IN LENGTH CROSSING U.S.A. LAND IN SECTIONS 25 & 26, TOWNSHIP 26 SOUTH, RANGE 33 EAST, N.M.P.M., LEA COUNTY, NEW MEXICO AND BEING 15.0 FEET LEFT AND 15.0 FEET RIGHT OF THE ABOVE PLATTED SURVEY.

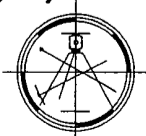


SURVEYORS CERTIFICATE

I, TERRY J. ASEL, NEW MEXICO PROFESSIONAL SURVEYOR NO. 15079, DO HEREBY CERTIFY THAT I CONDUCTED AND AM RESPONSIBLE FOR THIS SURVEY, THAT THIS SURVEY IS TRUE AND CORRECT TO THE BEST OF MY KNOWLEDGE AND BELIEF, AND MEETS THE "MINIMUM STANDARDS FOR SURVEYING IN NEW MEXICO" AS ADOPTED BY THE NEW MEXICO STATE BOARD OF REGISTRATION FOR PROFESSIONAL ENGINEERS AND SURVEYORS.

Terry J. Asel 11/16/2010
 Terry J. Asel N.M. R.P.S. No. 15079

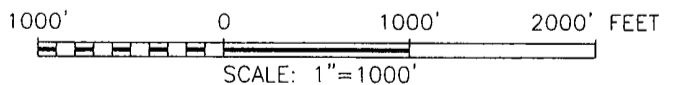
Asel Surveying



P.O. BOX 393 - 310 W TAYLOR
 HOBBS, NEW MEXICO - 575-393-9146

LEGEND

● - DENOTES FOUND MONUMENT AS NOTED



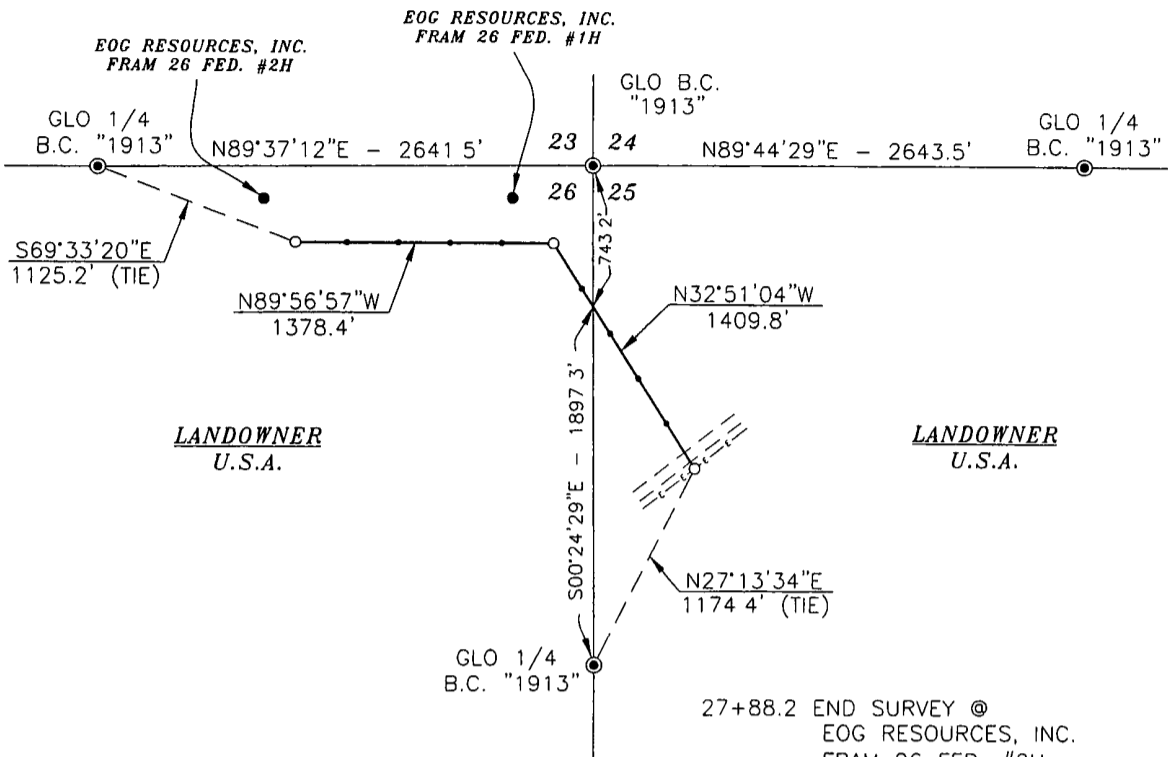
EOG RESOURCES, INC.

SURVEY FOR A ROAD EASEMENT CROSSING
 U.S.A. LAND IN SECTIONS 25 & 26,
 TOWNSHIP 26 SOUTH, RANGE 33 EAST,
 N.M.P.M., LEA COUNTY, NEW MEXICO

Survey Date: 11/02/10	Sheet 1 of 1 Sheets
W.O. Number: 101102RD	Drawn By: KA
Date: 11/13/10	101102RD.DWG Scale: 1"=1000'

SECTIONS 25 & 26, TOWNSHIP 26 SOUTH, RANGE 33 EAST, N.M.P.M.,
LEA COUNTY
NEW MEXICO

Exhibit G



Basis of Bearings - GPS Geodetic Measurements
 NM East Zone (83) North American Datum of 1983

- 27+88.2 END SURVEY @
EOG RESOURCES, INC.
FRAM 26 FED. #2H
& POLE #10
LAT. = 32°01'13.69"N
NAD 27 LONG = 103°32'21.34"W
- 25+12.5 POLE #9
- 22+36.8 POLE #8
- 19+61.2 POLE #7
- 16+85.5 POLE #6
- 14+56.9 PROPOSED PIPELINE
- 14+39.0 CL PROPOSED ROAD
- 14+09.8 P.I. 57°05'53" LT
& POLE #5
- 11+27.8 POLE #4
- 10+15.4 N-S SECTION LINE
- 8+45.9 POLE #3
- 5+63.9 POLE #2
- 2+82.0 POLE #1
- 0+26.6 CL CALICHE LEASE ROAD 20'W
- 0+00.0 BEGIN SURVEY @
EXISTING POLE
LAT. = 32°01'01.80"N
NAD 27 LONG. = 103°31'56.55"W

DESCRIPTION

A STRIP OF LAND 30.0 FEET WIDE AND 2788.2 FEET OR 0.528 MILES IN LENGTH CROSSING U.S.A LAND IN SECTIONS 25 & 26, TOWNSHIP 26 SOUTH, RANGE 33 EAST, N.M.P.M., LEA COUNTY, NEW MEXICO AND BEING 15.0 FEET LEFT AND 15.0 FEET RIGHT OF THE ABOVE PLATTED SURVEY.

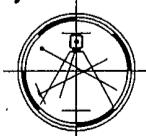


SURVEYORS CERTIFICATE

I, TERRY J. ASEL, NEW MEXICO PROFESSIONAL SURVEYOR NO. 15079, DO HEREBY CERTIFY THAT I CONDUCTED AND AM RESPONSIBLE FOR THIS SURVEY, THAT THIS SURVEY IS TRUE AND CORRECT TO THE BEST OF MY KNOWLEDGE AND BELIEF, AND MEETS THE "MINIMUM STANDARDS FOR SURVEYING IN NEW MEXICO" AS ADOPTED BY THE NEW MEXICO STATE BOARD OF REGISTRATION FOR PROFESSIONAL ENGINEERS AND SURVEYORS.

Terry J. Asel 11/16/2010
Terry J. Asel, N.M. R.P.S. No. 15079

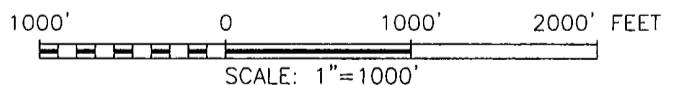
Asel Surveying



P.O. BOX 393 - 310 W. TAYLOR
HOBBS, NEW MEXICO - 575-393-9146

LEGEND

● - DENOTES FOUND MONUMENT AS NOTED



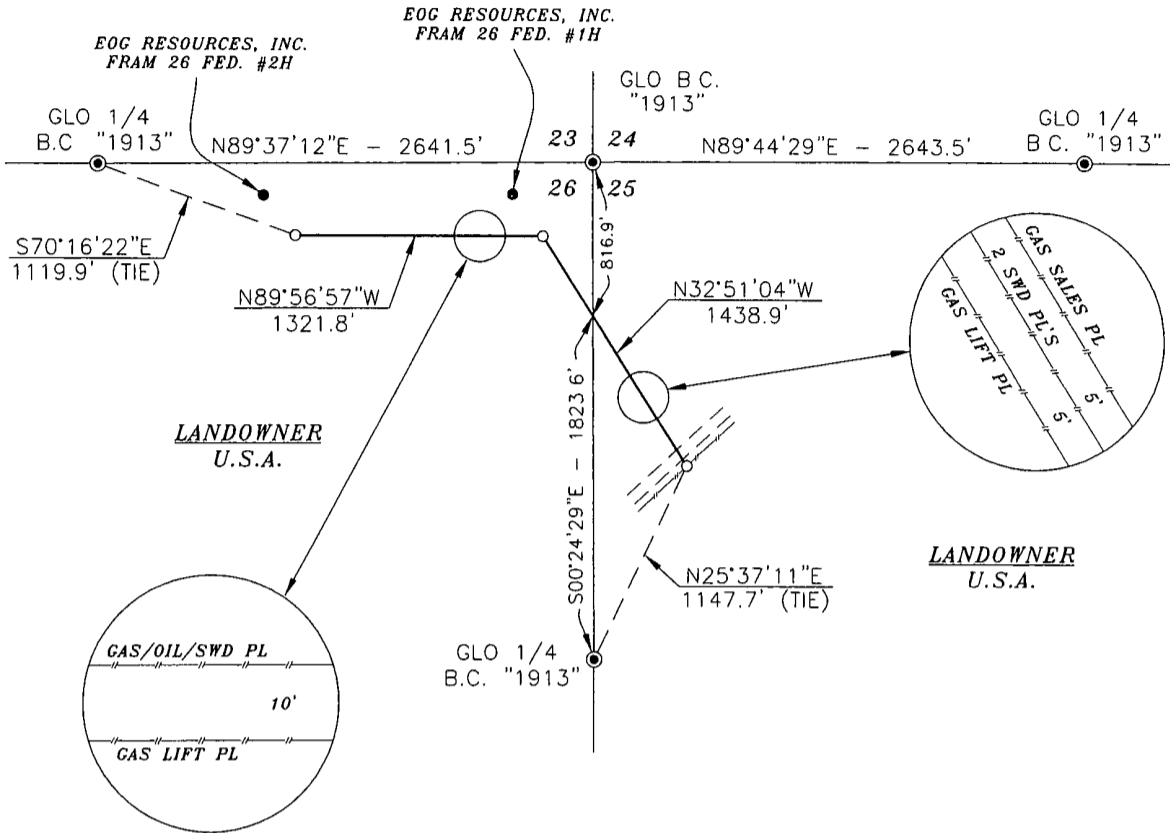
EOG RESOURCES, INC.

SURVEY FOR AN ELECTRIC LINE EASEMENT
CROSSING U.S.A LAND IN SECTIONS 25 & 26,
TOWNSHIP 26 SOUTH, RANGE 33 EAST,
N.M.P.M., LEA COUNTY, NEW MEXICO

Survey Date: 11/02/10	Sheet 1 of 1 Sheets
W.O. Number: 101102EL	Drawn By: KA
Date: 11/13/10	101102EL.DWG Scale: 1"=1000'

SECTIONS 25 & 26, TOWNSHIP 26 SOUTH, RANGE 33 EAST, N.M.P.M.,
LEA COUNTY NEW MEXICO

Exhibit 7



Basis of Bearings - GPS Geodetic Measurements
 NM East Zone (83) North American Datum of 1983

27+60.7 END SURVEY @
 EOG RESOURCES, INC.
 FRAM 26 FED. #2H
 LAT. = 32°01'13.84"N
 NAD 27 LONG. = 103°32'21.34"W
 14+38.9 P.I. 57°05'53" LT
 14+21.1 PROPOSED ELECTRIC LINE
 9+38.8 N-S SECTION LINE
 0+13.0 CL CALICHE LEASE ROAD 20'W
 0+00.0 BEGIN SURVEY @
 EXISTING EOG PIPELINE
 LAT = 32°01'01.71"N
 NAD 27 LONG. = 103°31'57.03"W

DESCRIPTION

A STRIP OF LAND 30.0 FEET WIDE AND 2760.7 FEET OR 0.523 MILES IN LENGTH CROSSING U.S.A LAND IN SECTIONS 25 & 26, TOWNSHIP 26 SOUTH, RANGE 33 EAST, N.M.P.M., LEA COUNTY, NEW MEXICO AND BEING 15.0 FEET LEFT AND 15.0 FEET RIGHT OF THE ABOVE PLATTED SURVEY.



LEGEND

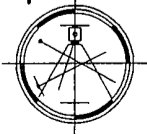
● - DENOTES FOUND MONUMENT AS NOTED

SURVEYORS CERTIFICATE

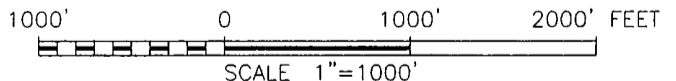
I, TERRY J. ASEL, NEW MEXICO PROFESSIONAL SURVEYOR NO. 15079, DO HEREBY CERTIFY THAT I CONDUCTED AND AM RESPONSIBLE FOR THIS SURVEY, THAT THIS SURVEY IS TRUE AND CORRECT TO THE BEST OF MY KNOWLEDGE AND BELIEF, AND MEETS THE "MINIMUM STANDARDS FOR SURVEYING IN NEW MEXICO" AS ADOPTED BY THE NEW MEXICO STATE BOARD OF REGISTRATION FOR PROFESSIONAL ENGINEERS AND SURVEYORS.

Terry J. Asel 12/3/2010
 Terry J. Asel N.M. R.P.S. No. 15079

Asel Surveying



P.O. BOX 393 - 310 W TAYLOR
 HOBBS, NEW MEXICO - 575-393-9146



EOG RESOURCES, INC.

SURVEY FOR A PIPELINE EASEMENT CROSSING
 U.S.A. LAND IN SECTIONS 25 & 26,
 TOWNSHIP 26 SOUTH, RANGE 33 EAST,
 N.M.P.M., LEA COUNTY, NEW MEXICO

Survey Date: 11/02/10	Sheet 1 of 1 Sheets
W.O. Number: 101102PL (Rev A)	Drawn By: KA
Date: 12/02/10	101102PL (Rev A).DWG Scale: 1"=1000'



V-Door East

