

District I
1625 N. French Dr., Hobbs, NM 88240
District II
1301 W. Grand Avenue, Artesia, NM 88210
District III
1000 Rio Brazos Rd., Aztec, NM 87410
District IV
1220 S. St. Francis Dr., Santa Fe, NM 87505

State of New Mexico
Energy, Minerals & Natural Resources Department
OIL CONSERVATION DIVISION
1220 South St. Francis Dr.
Santa Fe, NM 87505

Form C-102
Revised October 12, 2005
Submit to Appropriate District Office
State Lease- 4 Copies
Fee Lease- 3 Copies

☐ AMENDED REPORT

WELL LOCATION AND ACREAGE DEDICATION PLAT

API Number 30-025- 40213	Pool Code 7280 <i>OK dm</i>	Well Name Bradley; Bone Spring <i>OK dm</i>
Property Code 38729	Property Name FRAM "26" FEDERAL	
OGRID No. 7377	Operator Name EOG RESOURCES, INC.	
		Well Number 2H
		Elevation 3314.6'

Surface Location

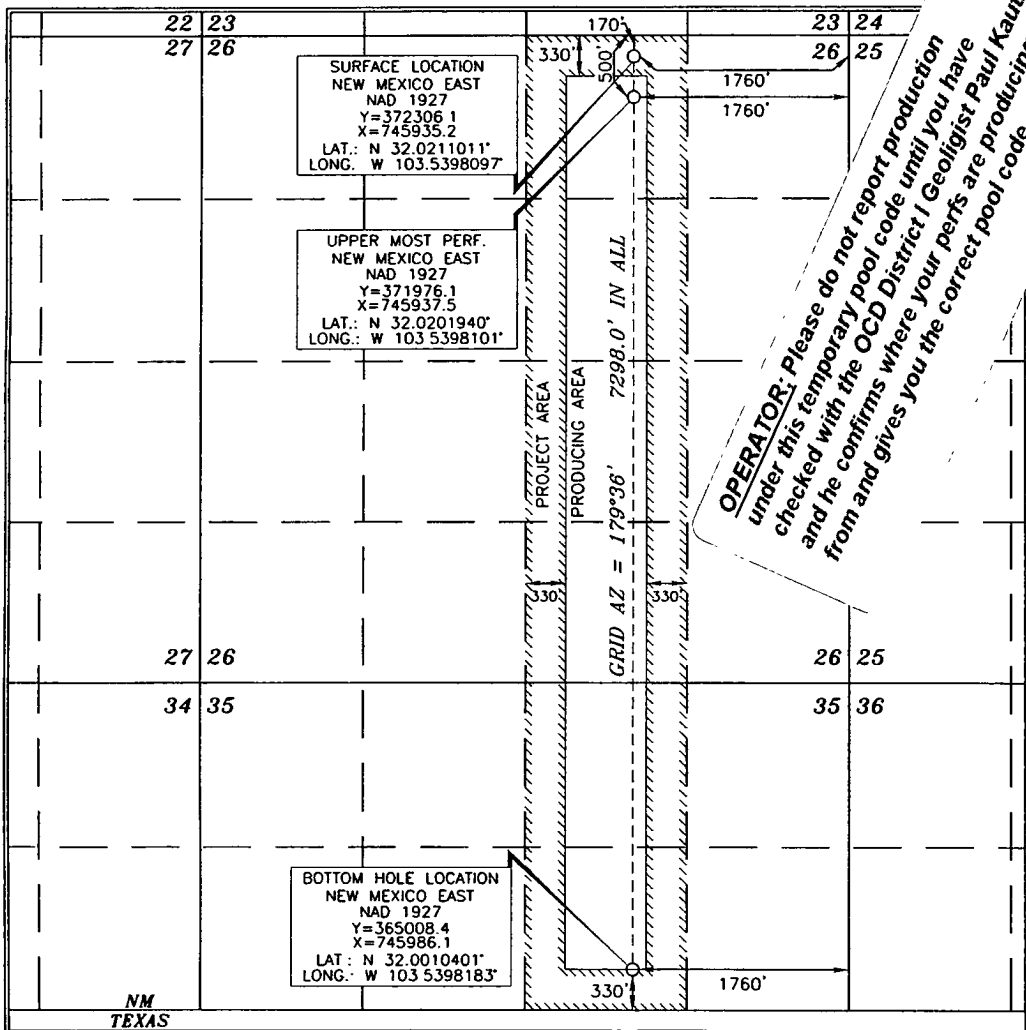
UL or lot no.	Section	Township	Range	Lot Idn	Feet from the	North/South line	Feet from the	East/West line	County
B	26	26 SOUTH	33 EAST, N.M.P.M.		170	NORTH	1760	EAST	LEA

Bottom Hole Location If Different From Surface

UL or lot no.	Section	Township	Range	Lot Idn	Feet from the	North/South line	Feet from the	East/West line	County
G	35	26 SOUTH	33 EAST, N.M.P.M.	2	330	SOUTH	1760	EAST	LEA

Dedicated Acres 236.28	Joint or Infill	Consolidation Code	Order No.
----------------------------------	-----------------	--------------------	-----------

No allowable will be assigned to this completion until all interests have been consolidated and a non-standard unit has been approved by the division.



OPERATOR CERTIFICATION

I hereby certify that the information contained herein is true and complete to the best of my knowledge and belief, and that this organization either owns a working interest or an undivided mineral interest in the land including the proposed bottom hole location or has a right to drill this well at this location pursuant to a contract with an owner of such a mineral or working interest, or to a voluntary pooling agreement or a compulsory pooling order heretofore entered by the division.

Donny G. Glanton 11/22/10
Signature Date

Donny G. Glanton
Printed Name

SURVEYOR CERTIFICATION

I hereby certify that the well location shown on this plat was plotted from field notes of actual surveys made by me or under my supervision, and that the same is true and correct to the best of my belief.

15079
NOVEMBER 2, 2010
Date of Survey
Signature and Seal of Professional Surveyor
Terry J. Asel 11/11/2010
Certificate Number 15079

WO# 101102WL-b (KA)