

Submit 1 Copy To Appropriate District
Office
District I
1625 N. French Dr., Hobbs, NM 88240
District II
1301 W. Grand Ave., Artesia, NM 88210
District III
1000 Rio Brazos Rd., Aztec, NM 87410
District IV
1220 S. St. Francis Dr., Santa Fe, NM
87505

State of New Mexico
Energy, Minerals and Natural Resources

Form C-103
October 13, 2009

HOBBS OGD

OIL CONSERVATION DIVISION
JUL 19 2011 220 South St. Francis Dr.
Santa Fe, NM 87505

RECEIVED

| | | |
|---|--|---|
| SUNDRY NOTICES AND REPORTS ON WELLS (DO NOT USE THIS FORM FOR PROPOSALS TO DRILL OR TO DEEPEN OR PLUG BACK TO A DIFFERENT RESERVOIR. USE "APPLICATION FOR PERMIT" (FORM C-101) FOR SUCH PROPOSALS) | | WELL API NO. 30-025-05204 |
| 1. Type of Well: Oil Well <input type="checkbox"/> Gas Well <input type="checkbox"/> Other Injector <input checked="" type="checkbox"/> | | 5. Indicate Type of Lease STATE <input type="checkbox"/> FEE <input checked="" type="checkbox"/> |
| 2. Name of Operator Celero Energy II, LP | | 6. State Oil & Gas Lease No. |
| 3. Address of Operator 400 W. Illinois, Ste. 1601 Midland, TX 79701 | | 7. Lease Name or Unit Agreement Name W T Mann A |
| 4. Well Location Unit Letter <u>B</u> : <u>660</u> feet from the <u>North</u> line and <u>2310</u> feet from the <u>East</u> line Section <u>36</u> Township <u>14S</u> Range <u>37E</u> NMPM County <u>Lea</u> | | 8. Well Number 2 |
| 11. Elevation (Show whether DR, RKB, RT, GR, etc.) | | 9. OGRID Number 247128 |
| | | 10. Pool name or Wildcat Denton; Devonian |

12. Check Appropriate Box to Indicate Nature of Notice, Report or Other Data

NOTICE OF INTENTION TO:

PERFORM REMEDIAL WORK ☐ PLUG AND ABANDON ☐
TEMPORARILY ABANDON ☐ CHANGE PLANS ☐
PULL OR ALTER CASING ☐ MULTIPLE COMPL ☐
DOWNHOLE COMMINGLE ☐

SUBSEQUENT REPORT OF:

REMEDIAL WORK ☐ ALTERING CASING ☐
COMMENCE DRILLING OPNS. ☐ P AND A ☐
CASING/CEMENT JOB ☐

OTHER: ☐

OTHER: Convert to injector ☒

13. Describe proposed or completed operations. (Clearly state all pertinent details, and give pertinent dates, including estimated date of starting any proposed work). SEE RULE 19.15.7.14 NMAC. For Multiple Completions: Attach wellbore diagram of proposed completion or recompletion.

2/28 - 3/12/11 - D/O cmt, plug & chase to btm @ 12,629'. RIH CIL from 12,400' to 12,000'. PU retainer & setting tool. Run into 12, 050', correlated log & set cmt retainer. Sqze cmt w/ a total of 900 sx (c Starbond +.2% FL -10 + .5% c - 11 + .2% c - 20 + .1% c - 51 + .25% R-38 + 2% salt). Drill retainer, cmt & start on shoe @ 12,627'. Drill 12,642' to 12,980'. Circ hole. Run 2 jts 4 1/2" csg float collar & 13 jts 4 1/2" liner, x-over, liner hanger & setting sleeve. Circulate bottoms up. Cmt w/ 125 sx Class "H", .5% FL-10, .3% C-11, .3% C-35, .25% R-38, 3% Salt. Final displacement pressure = 1000 PSI, bumped plug w/ 1500 PSI. Note: 4 1/2" liner top @ 12, 300'. Bottom of liner shoe @ 12,971'. Tag cmt @ 12,098'. Drill out cmt from 12,098' to 12,300', tag liner hanger top. Circ clean. Drill cmt, 4 1/2" liner, @ 12,845', pumping bottoms up. Pumped 9 sweeps. Drill out to 12,915'. Pumped bottoms up, pumped sweep, displaced hole w/ FW.

4/5 - 4/9/11 - RIH w/ 3 1/8" slick guns, correlate to CNL dated 4/1/11. Perf 12,760'-12,900', 810 holes in 4 runs. Break circ w/ 40 BFW, pump 250 gal 15% HCL acid, flush w/ 72 BFW. POH w/ 22 jts tbg to 12,213'. RU on csg to 500# psi, bled 120# psi in 5 min. Pressure to 800# psi for 1 hr, 3 bbbs gone, re-pressure to 1000# psi for 1.5 hrs, 10 bbbs gone. Perfs not breaking. RIH w/ 22 jts tbg to 12,920'. Rev tbg clean, rev 6 bbbs hot acid to 1/2 frac, pull 22 jts.

* Continued on attached sheet

Spud Date:

Rig Release Date:

I hereby certify that the information above is true and complete to the best of my knowledge and belief.

SIGNATURE

Lisa Hunt

TITLE Regulatory Analyst

DATE 07/15/2011

Type or print name Lisa Hunt

E-mail address: lhunt@celeroenergy.com

PHONE: (432)686-1883

For State Use Only

APPROVED BY:

[Signature]

TITLE

Staff mgr

DATE

8-8-2011

Conditions of Approval (if any):

AUG 08 2011

W T Mann A #2 – C103 continued

4/11/11 - POH w/ 2 7/8" tbg. RIH w/ 1 jt 2 7/8" tailpipe, 4 1/2" cline pkr, 2 3/8" SN, x-over, 400 jts 2 7/8" tbg. Tailpipe @ 12,901'. Break circ w/ 22 bbls, pump 1000 gals 15% HCL, flush w/ 63.5 BFW. Tailpipe @ 12,514', pkr @ 12,482'. Rev w/ 24 bbls, set pkr @ 12,482', csg to 500# psi, start pumping into perfs as soon as started pumping. Flush w/ 55 BFW. ISIP: 2100#, 5 min: 1911#, 10 min: 1825#, 15 min: 1736#. Max rate 5.8, avg rate 4.8, Max psi 3106, avg psi 2800.

6/22/11 - RIH w/ 4 1/2" CIBP & set @ 12,725'. Dump bail cmt in 2 runs.

6/23/11 - RIH w/ dump bailer. Tag @ 12,703'. Dump 35' cmt. RIH w/ 3 1/8" slick guns, w/ 120 degree phasing, locate top of tie back extension @ 12,258', correlate to GR/CCL/CNL dated 4/1/11. Perf 12,654'-12,644'-22 holes, 12,620'-12,599'-42 holes, 12,599'-12,578'-42 holes, 12,488'-12,474'-28 holes, 12,474'-12,434'-80 holes. Lost perf gun in hole. Locate top of tie back. Tag perf gun @ 12,627'. Top of fish @ 12,627' (Tally), btm of fish @ 12,673' (Tally).

6/27/11 - RU w/ 3 1/8" slick guns, w/ 120 degree phasing, fluid level @ 2500'. Locate top of tie back extension @ 12,258'. Correlate to GR/CCL/CNL dated 4/1/11. Perf 12,434' – 12,414'; 40 holes, 12,414' – 12,394'; 40 holes, 12,380' – 12,370'; 22 holes. Tag fish @ 12,614' (WL). Final fluid level @ 3400'.

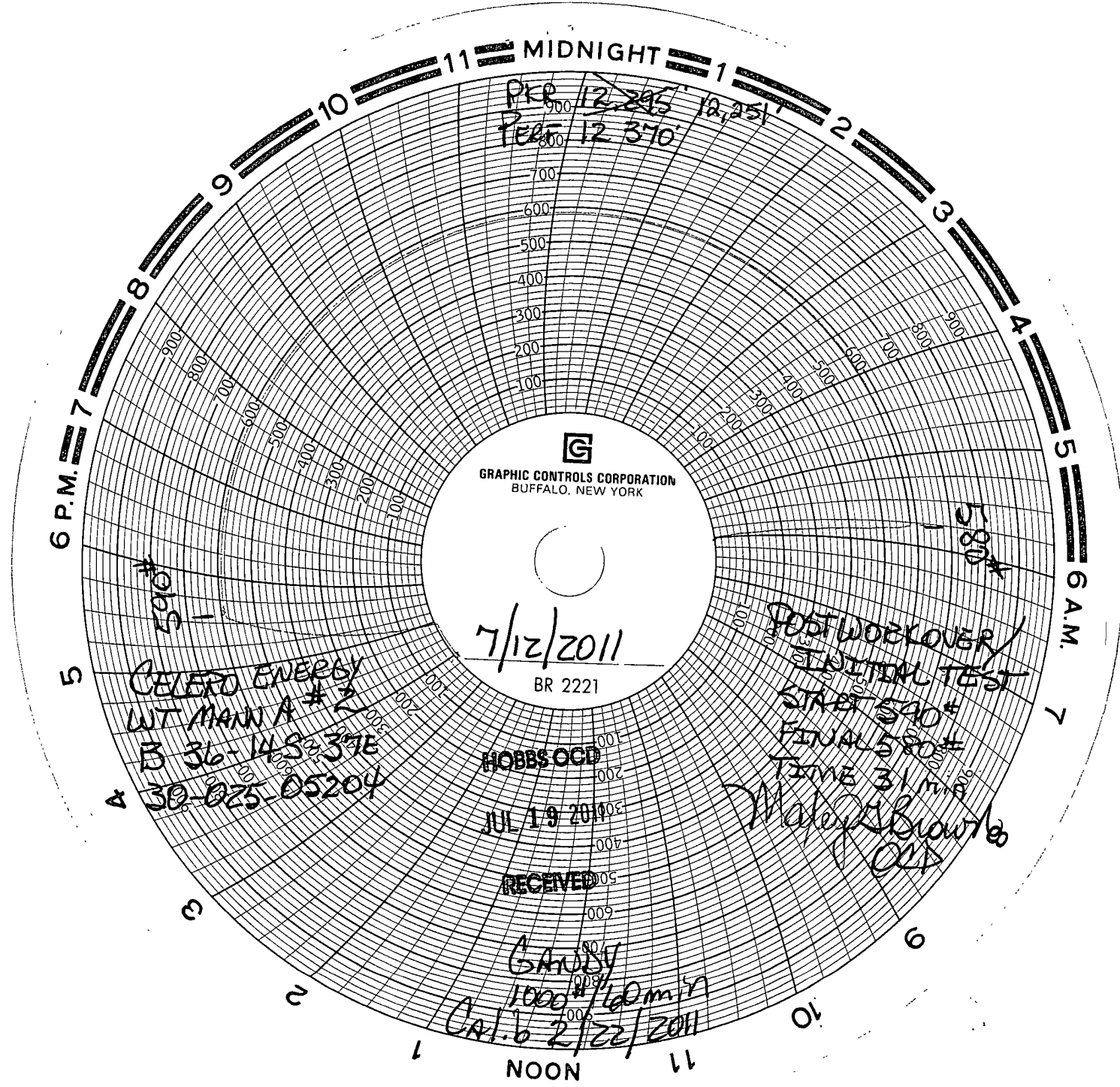
6/28/11 - RIH w/ tie back seal assembly, 7" Model FA pkr, B2 setting tool, lubricated BS, 383 jts of tbg. Sting into tie back extension @ 12,302' (Tally). Load csg w/ 30 bbls, test to 500# psi, drop ball down tbg, psi up on ball to 1500# psi, pull 25 pts over on pkr, rotate out of FA pkr.

6/30/11 - Ran 2806', 13.5#, L-80, LT&C; 6997' L-80, LT&C; & 2479' 13.5# L-80, LT&C.

7/1/11 - Tbg & csg was on a vacuum. Mix 3 drums of pkr fluid w/ 300 BFW in tank. Pump 2 BPM, broke circ w/ 53 bbls to half frac pumped 230 bbls down csg, stung into pkr, pulled 10 over to make sure it was latched up. NDBOP, install slips, landed well w/ 40K on pkr. Pressured up on csg to 560#. Recorded chart for 32 min, no psi loss or gain w/ tbg valve open. Install 4 1/2" gate valve on tbg.

7/5/11 - Gelled acid in tank, install pressure relief valve on backside. Backside was loaded, pressured up to 500#. Test lines to 4000# psi, started pumping acid, pumped 20 bbls ahead then dropped 1 ball every 2 bbls, tbg loaded w/ 72 bbls. Avg psi 3143#, Max psi 3500#, Min psi 2785#, ISIP 1295#, Max rate 20.3 BPM, Avg rate 9.5 BPM. Total load to recover 798.5 bbls,

7/12/11 - RIH w/ Electro BHP tool to 12,507'- 2423 psi @ 181.96 F. POH making gradient stops 12,307' – 2335 psi, 12,000' – 2205 psi, 10,000' – 1354 psi, 8000' – 501 psi, 6000' – 38 psi, 4000' – 35 psi, 2000' – 31 psi, 0' – 29 psi. ND Master valve, NU 7 1/16" flange x 4 1/2" ID w/ o'rings. NU Master valve. Ran MIT. Pressure to 590# psi. Lost 10# psi in 31 mins to 580# psi. Test is good. Maxey Brown w/ NMOCD witnessed & approved the test. Original chart is attached. Well in now an injection well as per Order No. R-13387.



PKR 12,295
REF 12,370

GRAPHIC CONTROLS CORPORATION
BUFFALO, NEW YORK

7/12/2011
BR 2221

CELESTO ENERGY
WT MANN A #2
B 36-14 S-37E
A 30-025-05204

HOBBS OGD

JUL 19 2011

RECEIVED

GAUSS

1000 #/60 min
CAL. 6 2/22/2011

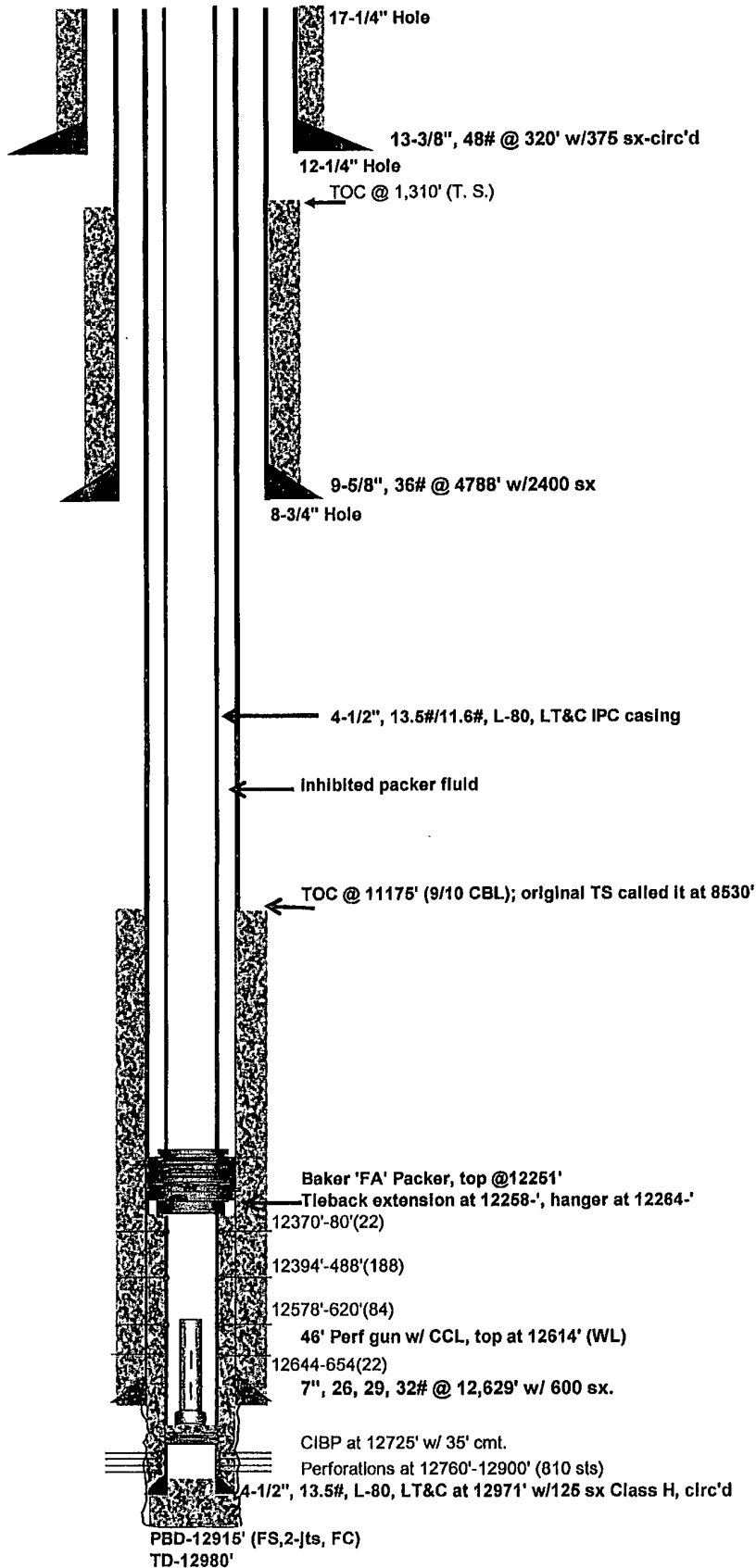
POSTWORKOVER
INITIAL TEST
START 540#
FINAL 580#
TIME 31 min
M. J. Brown
OGD

W. T. Mann "A" # 2 660' FNL & 2310' FEL of Sec. 36, T14S, R37E, Unit Letter "B"

Spud: 6/7/54
 Compl: 9/15/54
 Elev: 3801'
 API # 30-025-05204

7/16/2011

Anhy @ 2138'
 T-salt @ 2240'
 B-salt @ 3010'
 Yates @ 3160'
 San Andres @ 4688'
 Glorieta @ 6194'
 Tubbs @ 7334'
 Abo @ 8042'
 Wolfcamp @ 9335'
 Miss @ 11493'
 Devonian @ 12371'



4-1/2" casing as run:
 surface-2479', 13.5#
 2479'-9476', 11.6#
 9476'-12251', 13.5#

7" casing-as run
 Surf-1026', 32#
 1026'-2022', 29#
 2022'-7994', 26#
 7994'-10602', 29#
 10602'-12629', 32#