

Surface Use Plan  
HT 18 Federal No. 6  
Cimarex Energy Co. of Colorado  
Lot 2, Section 18  
T17S R32E, Lea County, NM

D-025-40233  
HOBBS OCD

AUG 10 2011

RECEIVED

8. Methods of Handling Waste Material:

- A. Drill cuttings will be separated by a series of solids removal equipment and stored in steel containment pits and then hauled to a state-approved disposal facility.
- B. All trash, junk and other waste material will be contained in trash cages or bins to prevent scattering. When the job is completed all contents will be removed and disposed of in an approved sanitary land fill.
- C. Salts remaining after completion of well will be picked up by supplier including broken sacks.
- D. Sewage from living quarters will drain into holding tanks and be cleaned out periodically and hauled to a waste disposal facility. A Porta-John will be provided for the rig crews. This equipment will be properly maintained during the drilling operations and removed upon completion of the well.
- E. Drilling fluids will be contained in steel pits in a closed circulating system. Fluids will be cleaned and reused. Water produced during testing will be contained in the steel pits and disposed of at a state approved disposal facility. Any oil or condensate produced will be stored in test tanks until sold and hauled from the site.

9. Ancillary Facilities:

- A. No camps or airstrips to be constructed.

10. Well Site Layout:

- A. Exhibit "D" shows location and rig layout.
- C. Mud pits in the closed circulating system will be steel pits and the cuttings will be stored in steel containment pits.
- D. Cuttings will be stored in steel pits until they are hauled to a state-approved disposal facility.
- E. If the well is a producer, those areas of the location not essential to production facilities will be reclaimed and seeded per BLM requirements.

11. Plans for Restoration of Surface:

Rehabilitation of the location will start in a timely manner after all drilling operations cease. The type of reclamation will depend on whether the well is a producer or a dry hole.

Drainage systems, if any, will be reshaped to the original configuration with provisions made to alleviate erosion. These may need to be modified in certain circumstances to prevent inundation of the location's pad and surface facilities. After the area has been shaped and contoured, topsoil from the spoil pile will be placed over the disturbed area to the extent possible. Revegetation procedures will comply with BLM standards.

If the well is a dry hole, the pad and road area will be recontoured to match the existing terrain. Topsoil will be spread to the extent possible. Revegetation will comply with BLM standards.

Should the well be a producer, those areas of the location not essential to production facilities and operations will be reclaimed and seeded per BLM requirements. Please see Production Facilities Layout Diagram, exhibit D-1.

12. Other Information

- A. Topography consists of a sloping plane with loose tan sands. Vegetation is mainly yucca, mesquite and shin oak.
- B. The wellsite is on surface owned by Department of the Interior, Bureau of Land Management. The land is used mainly for farming, cattle ranching, recreational use, and oil and gas production.
- C. In lieu of an archaeological survey report, Cimarex will be submitting an MOA application for this well pad and access road since they are within the MOA boundary.
- D. There are no known dwellings within 1½ miles of this location.

Operator Certification Statement  
HT 18 Federal No. 6  
Cimarex Energy Co. of Colorado  
Lot 2, Section 18  
T17S R32E, Lea County, NM

Operator's Representative

Cimarex Energy Co. of Colorado  
600 N. Marienfeld St., Ste. 600  
Midland, TX 79701  
Office Phone: (432) 571-7800  
Zeno Farris

**CERTIFICATION:** I hereby certify that I, or someone under my direct supervision, have inspected the drill site and access route proposed herein; that I am familiar with the conditions which currently exist; that I have full knowledge of state and Federal laws applicable to this operation; that the statements made in this APD package are, to the best of my knowledge, true and correct; and that the work associated with the operations proposed herein will be performed in conformity with this APD package and the terms and conditions under which it is approved. I also certify that I, or the company I represent, am responsible for the operations conducted under this application. These statements are subject to the provisions of 18 U.S.C. 1001 for the filing of false statements.

Executed this 23rd day of March, 2011

NAME: Zeno Farris  
Zeno Farris

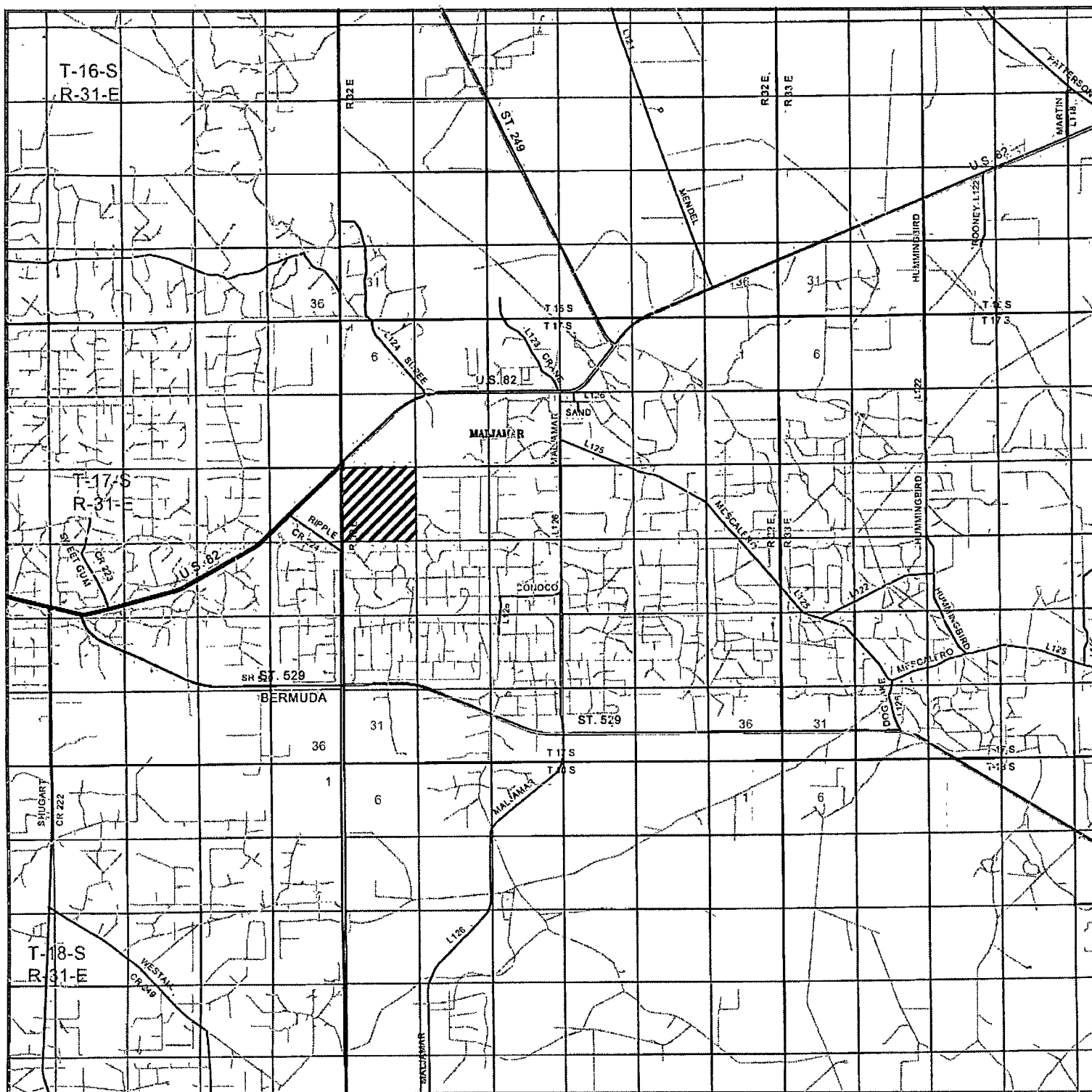
TITLE: Manager Operations Administration

ADDRESS: 600 N. Marienfeld St., Ste. 600  
Midland, TX 79701

TELEPHONE: (432) 620-1938

EMAIL: zfarris@cimarex.com

Field Representative: Same as above



# HT "18" FEDERAL #6

Located 2160' FNL and 1033' FWL

Section 18, Township 17 South, Range 32 East,  
N.M.P.M., Lea County, New Mexico.

**basin**  
**surveys**  
focused on excellence  
in the oilfield

P.O. Box 1786  
1120 N. West County Rd.  
Hobbs, New Mexico 88241  
(575) 393-7316 - Office  
(575) 392-2206 - Fax  
basinsurveys.com

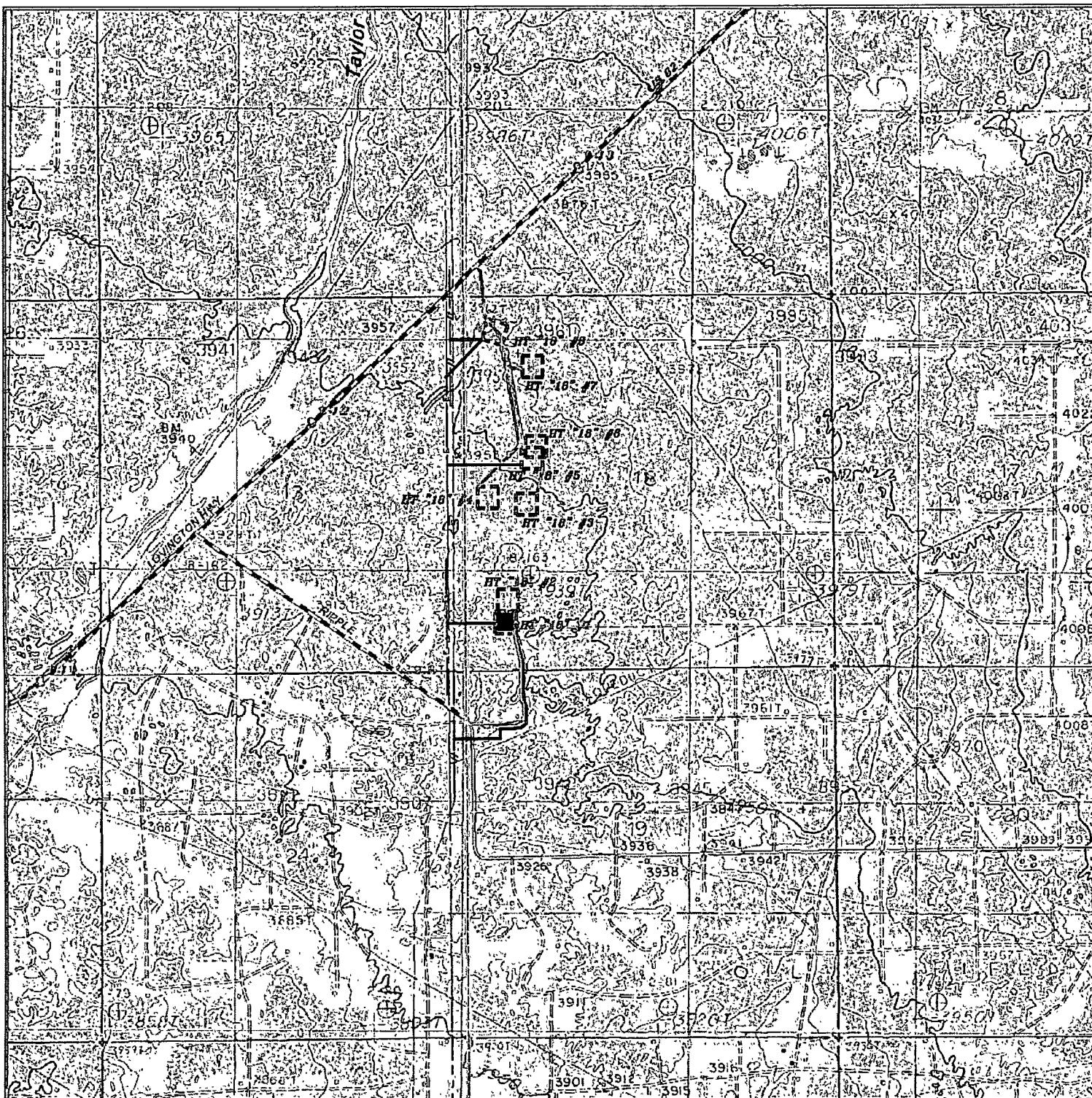
W.O. Number: JMS 23864

Survey Date: 02-21-2011

Scale: 1" = 2 Miles

Date: 02-23-2011

**CIMAREX**  
**ENERGY CO.**  
**OF COLORADO**



## THE HT FEDERAL WELLS

Section 18, Township 17 South, Range 32 East,  
N.M.P.M., Lea County, New Mexico.

- ROAD
- PIPELINE
- ELECTRIC LINE
- FLOWLINE

■ Battery

**basin**  
**surveys**

focused on excellence  
in the oilfield

P.O. Box 1786  
1120 N. West County Rd.  
Hobbs, New Mexico 88241  
(575) 393-7316 - Office  
(575) 392-2206 - Fax  
basinsurveys.com

W.O. Number: JMS 23576

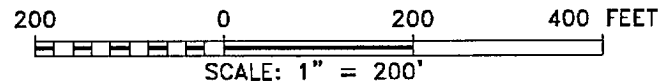
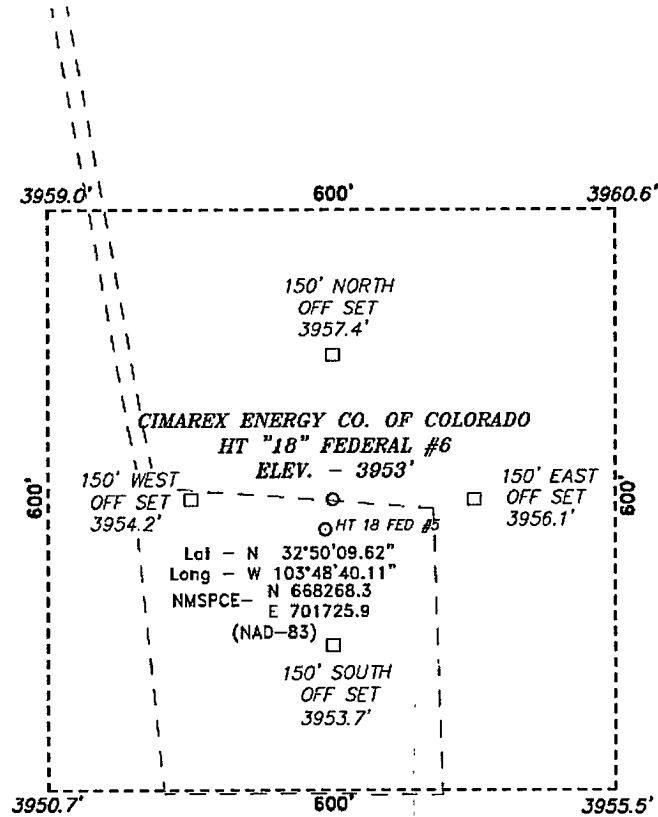
Survey Date: 10-14-2010

Scale: 1" = 2000'

Date: 10-26-2010

**CIMAREX**  
**ENERGY CO.**  
**OF COLORADO**

SECTION 18, TOWNSHIP 17 SOUTH, RANGE 32 EAST, N.M.P.M.,  
LEA COUNTY, NEW MEXICO.



Directions to Location:

FROM MILE MARKER 142, GO NORTHEAST 0.6 MILES  
TO LEASE ROAD, ON LEASE ROAD GO SOUTH 0.5  
MILES TO WELL PAD AND PROPOSED LOCATION.

**CIMAREX ENERGY CO. OF COLORADO**

REF: HT "18" FEDERAL #6 / WELL PAD TOPO

THE HT "18" FEDERAL #6 LOCATED 2160'

FROM THE NORTH LINE AND 1033' FROM THE WEST LINE OF  
SECTION 18, TOWNSHIP 17 SOUTH, RANGE 32 EAST,  
N.M.P.M., LEA COUNTY, NEW MEXICO.

**BASIN SURVEYS** P.O. BOX 1786 - HOBBS, NEW MEXICO

W.O. Number: 23864 Drawn By: J. SMALL

Date: 02-23-2011 Disk: JMS 23864

Survey Date: 02-21-2011 Sheet 1 of 1 Sheets

