

DISTRICT I
1625 N. French Dr., Hobbs, NM 88240
Phone: (575) 393-6161 Fax: (575) 393-0720
DISTRICT II
811 S. First St., Artesia, NM 88210
Phone: (575) 748-1283 Fax: (575) 748-9720
DISTRICT III
1000 Rio Brazos Road, Aztec, NM 87410
Phone: (505) 334-6178 Fax: (505) 334-6170
DISTRICT IV
1220 S. St. Francis Dr., Santa Fe, NM 87505
Phone: (505) 476-3460 Fax: (505) 476-3462

State of New Mexico
Energy, Minerals & Natural Resources Department
OIL CONSERVATION DIVISION
1220 South St. Francis Dr.
Santa Fe, New Mexico 87505

Form C-102
Revised August 1, 2011
Submit one copy to appropriate
District Office

☐ AMENDED REPORT

WELL LOCATION AND ACREAGE DEDICATION PLAT

API Number 30-025-43195		Pool Code 5535	Pool Name Berry;Bone Spring, North
Property Code 305310	Property Name 9012 JV-P ALINE		Well Number 3
OGRID No 260297	Operator Name BTA OIL PRODUCERS, LLC		Elevation 3741'

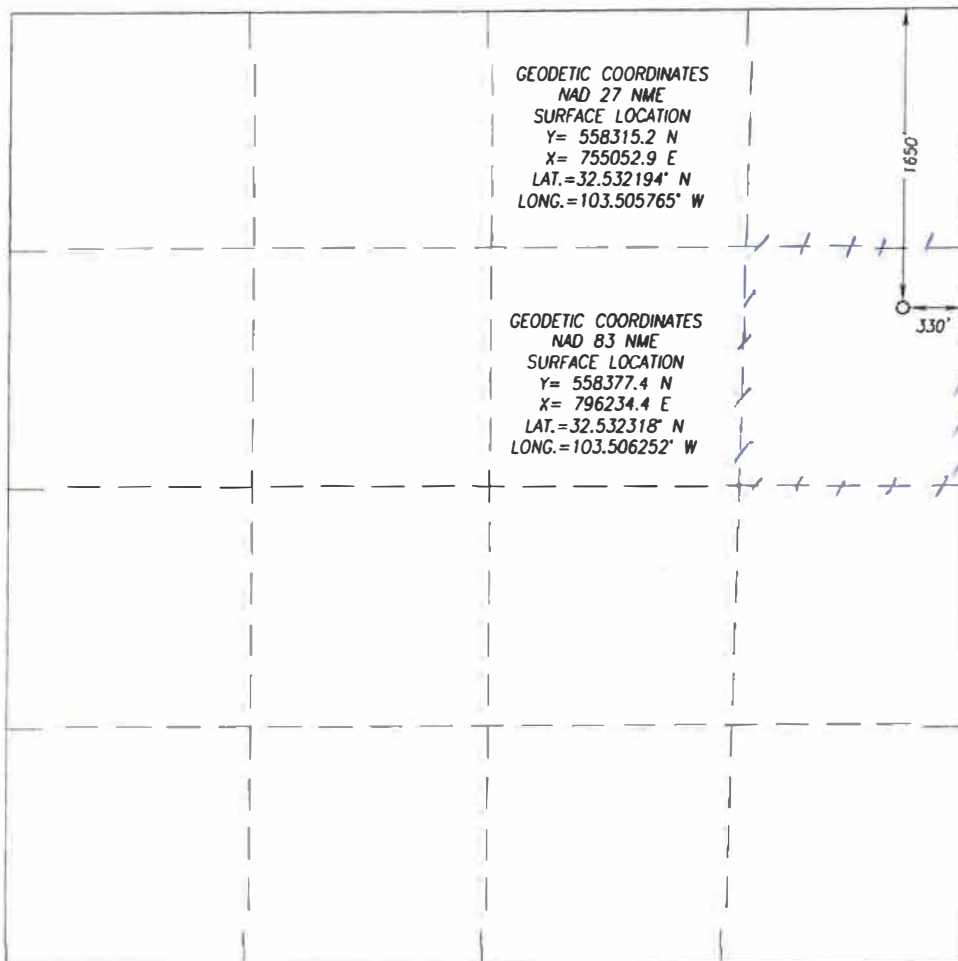
Surface Location

UL or lot No	Section	Township	Range	Lot Idn	Feet from the	North/South line	Feet from the	East/West line	County
H	36	20-S	34-E		1650	NORTH	330	EAST	LEA

Bottom Hole Location If Different From Surface

UL or lot No	Section	Township	Range	Lot Idn	Feet from the	North/South line	Feet from the	East/West line	County
Dedicated Acres 40		Joint or Infill		Consolidation Code		Order No			

NO ALLOWABLE WILL BE ASSIGNED TO THIS COMPLETION UNTIL ALL INTERESTS HAVE BEEN CONSOLIDATED OR A NON-STANDARD UNIT HAS BEEN APPROVED BY THE DIVISION



OPERATOR CERTIFICATION

I hereby certify that the information herein is true and complete to the best of my knowledge and belief, and that this organization either owns a working interest or unleased mineral interest in the land including the proposed bottom hole location or has a right to drill this well at this location pursuant to a contract with an owner of such mineral or working interest, or to a voluntary pooling agreement or a compulsory pooling order heretofore entered by the division.

Pam Inskeep 04/15/2016
Signature Date

Pam Inskeep, Regulatory Administrator
Printed Name

pinskeep@btaoil.com
E-mail Address

SURVEYOR CERTIFICATION

I hereby certify that the well location shown on this plat was plotted from field notes of actual surveys made by me or under my supervision, and that the same is true and correct to the best of my belief.

APR 14 2016

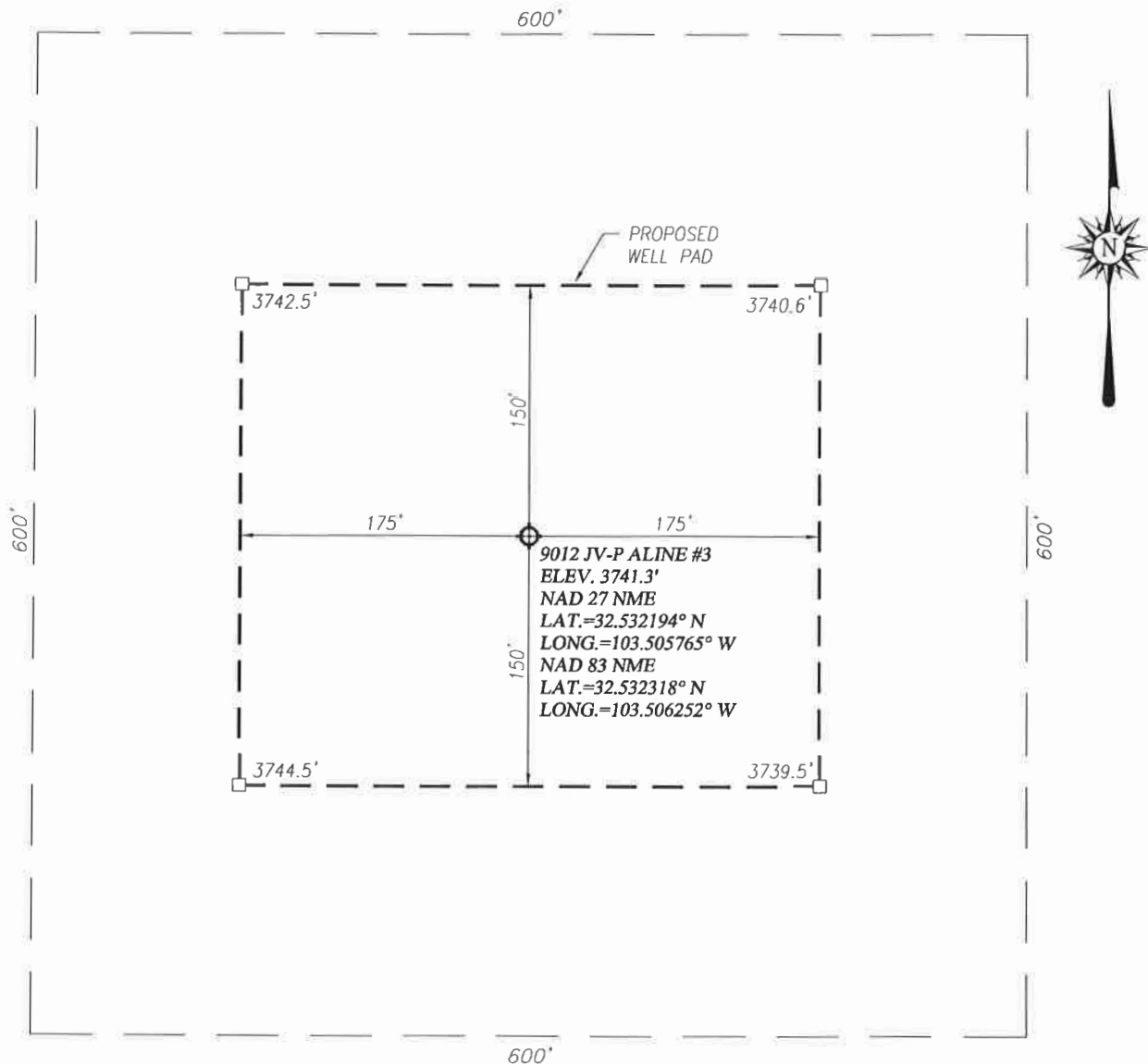
Date of Survey
Signature & Seal of Professional Surveyor

Ronald J. Eidson
NEW MEXICO
REGISTERED SURVEYOR
3239
4/14/2016

Certificate Number
Gary G. Eidson 12641
Ronald J. Eidson 3239

LSL JWSC W O 16 11 0233

WELL SITE PLAN

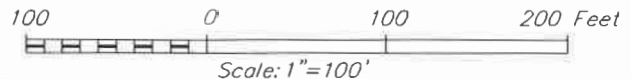


NOTE:

1) SEE "TOPOGRAPHICAL AND ACCESS ROAD MAP" FOR PROPOSED ROAD LOCATION.

DIRECTIONS TO THIS LOCATION:

FROM THE INTERSECTION OF U.S. HWY. 62-180 AND N.M. ST. HWY. 18 IN HOBBS GO WEST ON U.S. HWY 62-180 23.6 MILES TO CO. RD. 27-A (MARATHON ROAD) GO SOUTH ON CO. RD. 27-A APPROX. 7.9 MILES TO ST. HWY 128, TURN LEFT AND GO EAST APPROX. 0.4 MILES TO CALICHE LEASE ROAD, TURN LEFT AND GO NORTH APPROX. 0.9 MILES TO AN INTERSECTION, TURN RIGHT AND GO EAST APPROX. 0.5 MILES TO THE STARTOSPHERE 36 ST. COM #3H, FROM THE SE PAD CORNER GO SOUTH 284 FEET ROAD CURVES LEFT CONTINUE EAST APPROX 158 FEET TO THE JV-P ALINE #2, FROM THE SW PAD CORNER THIS LOCATION IS 447 FEET SOUTH-SOUTHEAST.



BTA OIL PRODUCERS, LLC

9012 JV-P ALINE #3 WELL LOCATED 1650 FEET FROM THE NORTH LINE AND 330 FEET FROM THE EAST LINE OF SECTION 36, TOWNSHIP 20 SOUTH, RANGE 34 EAST, N.M.P.M., LEA COUNTY, NEW MEXICO

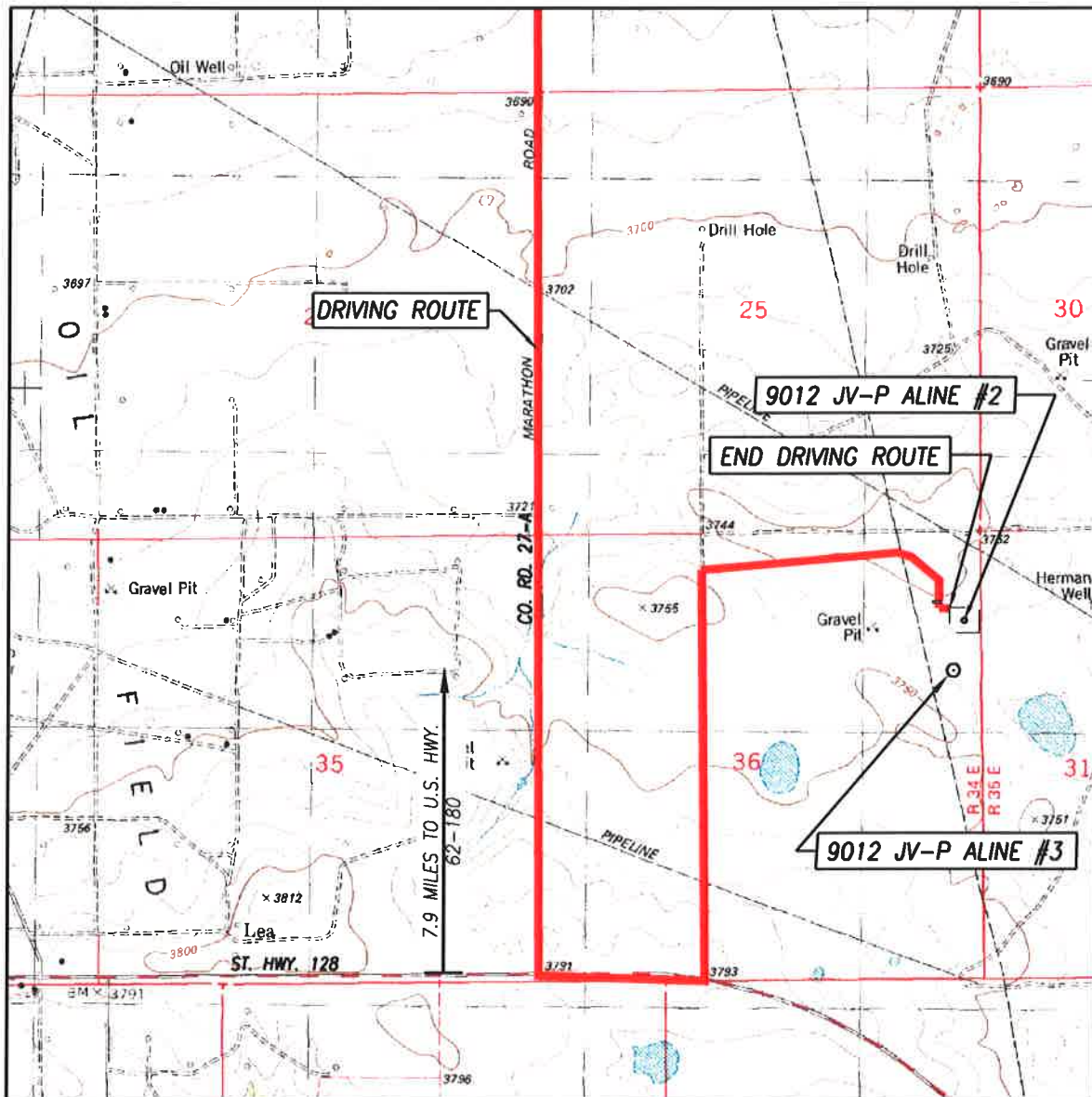


PROVIDING SURVEYING SERVICES
SINCE 1946
JOHN WEST SURVEYING COMPANY
412 N. DAL PASO HOBBS, N.M. 88240
(575) 393-3117 www.jwsc.biz
TBPLS# 10021000

Survey Date: 4/11/16	CAD Date: 4/14/16	Drawn By: LSL
W.O. No.: 16110233	Rev: .	Rel. W.O.:

Sheet 1 of 1

TOPOGRAPHIC AND ACCESS ROAD MAP



SCALE: 1" = 2000'

DIRECTIONS TO THIS LOCATION:

CONTOUR INTERVAL:
LEA, N.M. - 10'

SEC. 36 TWP. 20-S RGE. 34-E

SURVEY N.M.P.M.

COUNTY LEA STATE NEW MEXICO

DESCRIPTION 1650' FNL & 330' FEL

ELEVATION 3741'

OPERATOR BTA OIL PRODUCERS, LLC

LEASE 9012 JV-P ALINE

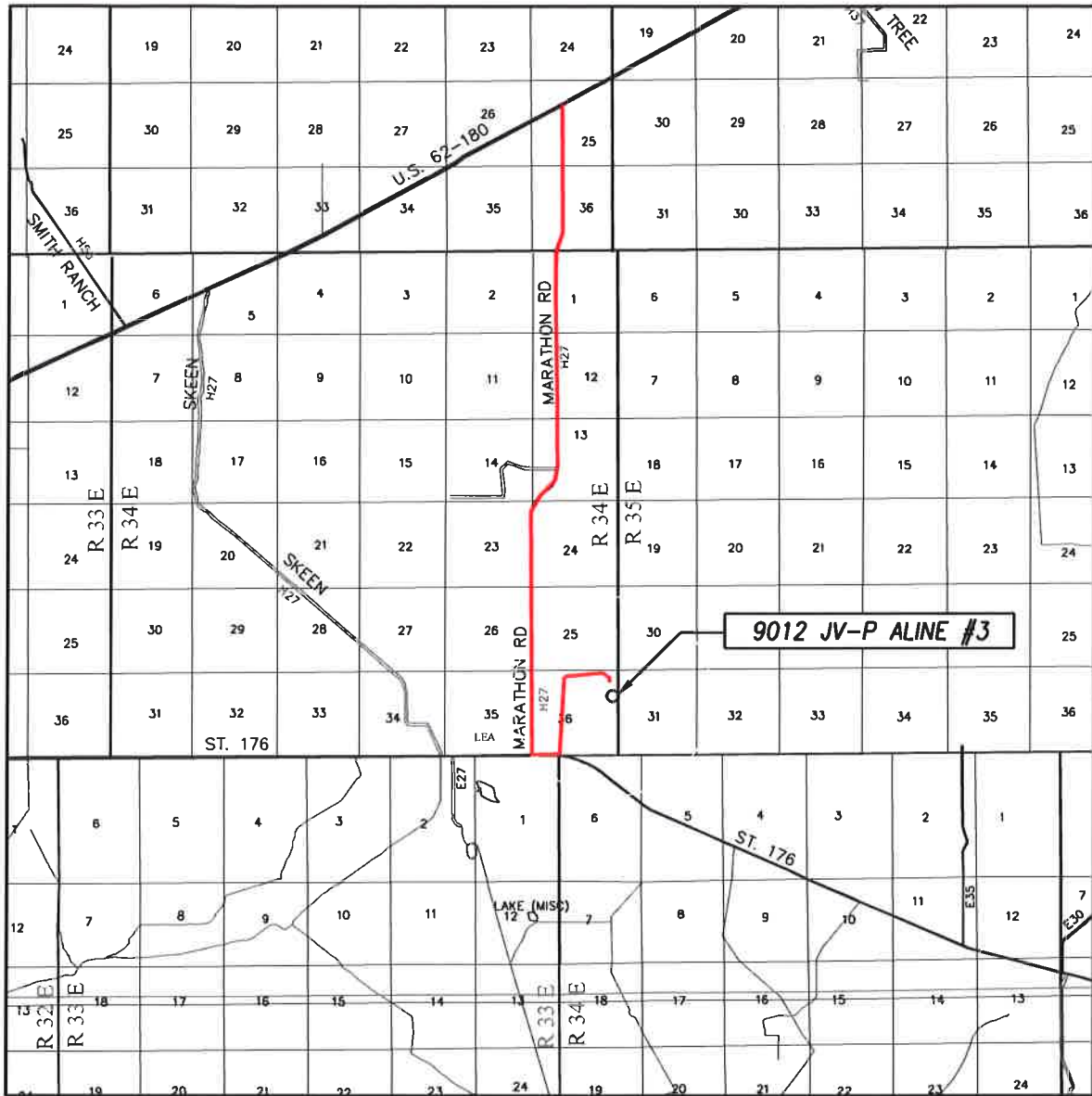
U.S.G.S. TOPOGRAPHIC MAP
LEA, N.M.

FROM THE INTERSECTION OF U.S. HWY. 62-180 AND N.M. ST. HWY. 18 IN HOBBS GO WEST ON U.S. HWY 62-180 23.6 MILES TO CO. RD. 27-A (MARATHON ROAD) GO SOUTH ON CO. RD. 27-A APPROX. 7.9 MILES TO ST. HWY 128, TURN LEFT AND GO EAST APPROX. 0.4 MILES TO CALICHE LEASE ROAD, TURN LEFT AND GO NORTH APPROX. 0.9 MILES TO AN INTERSECTION, TURN RIGHT AND GO EAST APPROX. 0.5 MILES TO THE STARTOSPHERE 36 ST. COM #3H. FROM THE SE PAD CORNER GO SOUTH 284 FEET ROAD CURVES LEFT CONTINUE EAST APPROX 158 FEET TO THE JV-P ALINE #2, FROM THE SW PAD CORNER THIS LOCATION IS 447 FEET SOUTH-SOUTHEAST.



PROVIDING SURVEYING SERVICES
SINCE 1946
JOHN WEST SURVEYING COMPANY
412 N. DAL PASO HOBBS, N.M. 88240
(575) 393-3117 www.jwsc.biz
TBPLS# 10021000

VICINITY MAP



SCALE: 1" = 2 MILES

DRIVING ROUTE: SEE TOPOGRAPHICAL AND ACCESS ROAD MAP

SEC. 36 TWP. 20-S RGE. 34-E

SURVEY N.M.P.M.

COUNTY LEA STATE NEW MEXICO

DESCRIPTION 1650' FNL & 330' FEL

ELEVATION 3741'

OPERATOR BTA OIL PRODUCERS, LLC

LEASE 9012 JV-P ALINE

