

30-025-43311

District I  
1625 N. French Dr., Hobbs, NM 88240  
Phone: (575) 393-6161 Fax: (575) 393-0720  
District II  
811 S. First St., Artesia, NM 88210  
Phone: (505) 748-1283 Fax: (575) 748-9720  
District III  
1000 Rio Brazos Road, Aztec, NM 87410  
Phone: (505) 334-6178 Fax: (505) 334-6170  
District IV  
1220 S. St. Francis Dr., Santa Fe, NM 87505  
Phone: (505) 476-3460 Fax: (505) 476-3462

State of New Mexico  
Energy, Minerals & Natural Resources Department  
OIL CONSERVATION DIVISION  
1220 South St. Francis Dr. **OCD - HOBBS**  
Santa Fe, NM 87505

Form C-102  
Revised August 1, 2011  
Submit one copy to appropriate  
District Office

☐ AMENDED REPORT

**06/21/2016**  
**RECEIVED**

WELL LOCATION AND ACREAGE DEDICATION PLAT

<sup>1</sup> API Number	<sup>2</sup> Pool Code 59900 ✓	<sup>3</sup> Pool Name TRIPLE X; BONE SPRING <b>KZ</b>
<sup>4</sup> Property Code	<sup>5</sup> Property Name THISTLE UNIT ✓	<sup>6</sup> Well Number 110H ✓
<sup>7</sup> OGRID No. 6137 ✓	<sup>8</sup> Operator Name DEVON ENERGY PRODUCTION COMPANY, L.P. ✓	<sup>9</sup> Elevation 3711.2

<sup>10</sup> Surface Location

UL or lot no. C	Section 22	Township 23 S	Range 33 E	Lot Idn 305	Feet from the 305	North/South line NORTH	Feet from the 1700	East/West line WEST	County LEA ✓
--------------------	---------------	------------------	---------------	----------------	----------------------	---------------------------	-----------------------	------------------------	-----------------

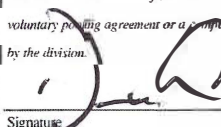
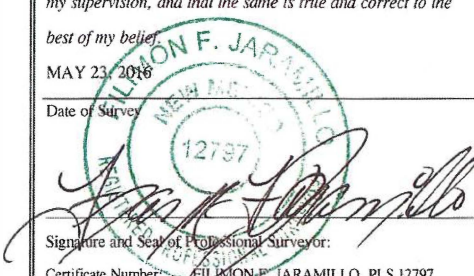
<sup>11</sup> Bottom Hole Location If Different From Surface

UL or lot no. F	Section 27	Township 23 S	Range 33 E	Lot Idn	Feet from the 2630	North/South line NORTH	Feet from the 1340	East/West line WEST	County LEA ✓
--------------------	---------------	------------------	---------------	---------	-----------------------	---------------------------	-----------------------	------------------------	-----------------

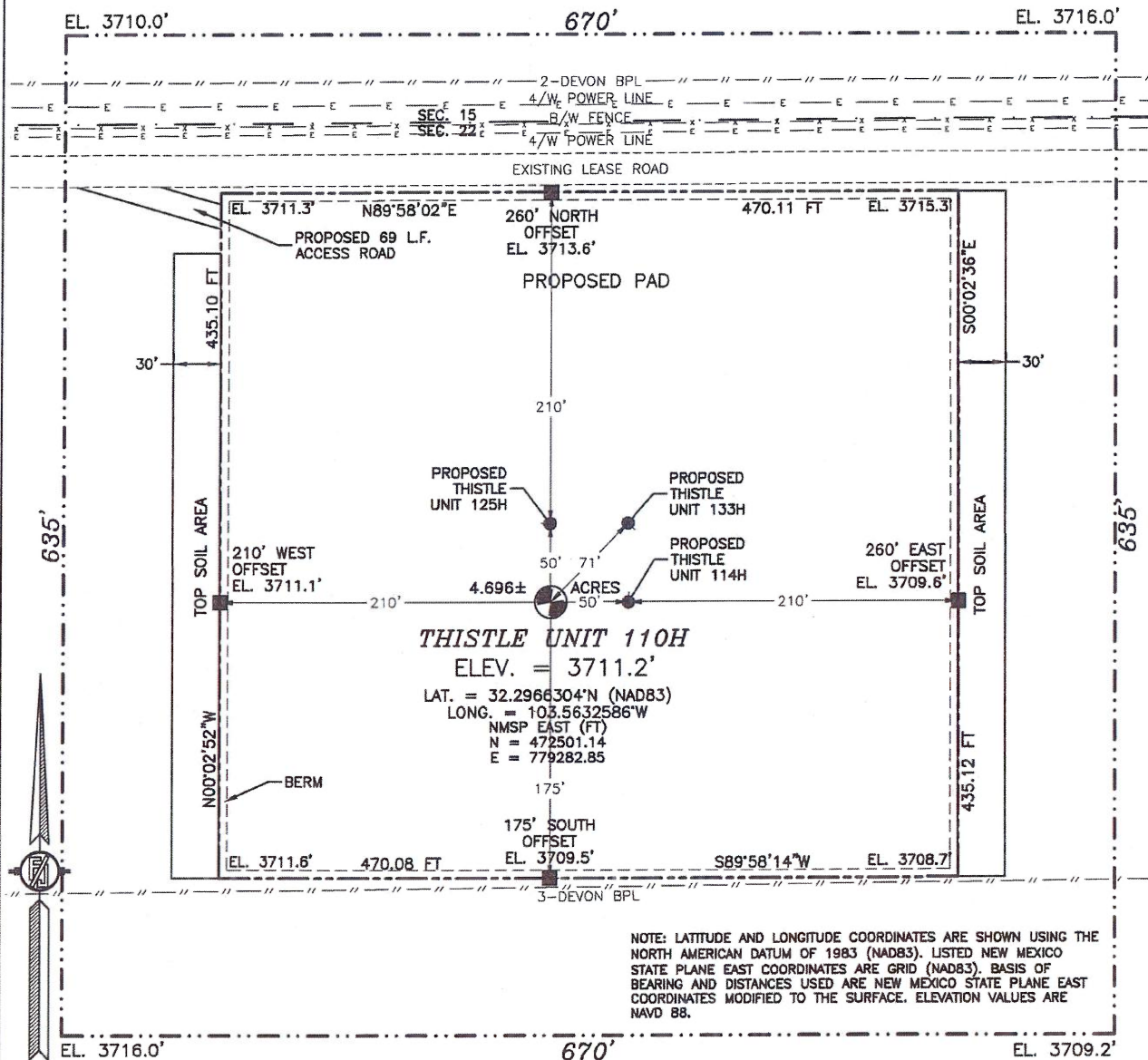
<sup>12</sup> Dedicated Acres 240 ✓	<sup>13</sup> Joint or Infill ✓	<sup>14</sup> Consolidation Code	<sup>15</sup> Order No.
--	------------------------------------	----------------------------------	-------------------------

No allowable will be assigned to this completion until all interests have been consolidated or a non-standard unit has been approved by the division.

PP: 930 FNL & 850 FWL

<p>NW CORNER SEC. 22 LAT. = 32.2974757°N LONG. = 103.5687592°W NMSP EAST (FT) N = 472796.48 E = 777580.98</p> <p>W/4 CORNER SEC. 22 SCALED</p> <p>SECTION CORNER LAT. = 32.2829508°N LONG. = 103.5687577°W NMSP EAST (FT) N = 467512.36 E = 777619.12</p> <p>W/4 CORNER SEC. 27 LAT. = 32.2756899°N LONG. = 103.5687542°W NMSP EAST (FT) N = 464870.84 E = 777639.03</p> <p>SW CORNER SEC. 27 LAT. = 32.2684420°N LONG. = 103.5687493°W NMSP EAST (FT) N = 462234.08 E = 777659.34</p>		<p>N/4 CORNER SEC. 22 LAT. = 32.2974646°N LONG. = 103.5682208°W NMSP EAST (FT) N = 472811.37 E = 780219.33</p> <p>THISTLE UNIT 110H ELEV. = 3711.2' LAT. = 32.2966304°N (NAD83) LONG. = 103.5632586°W NMSP EAST (FT) N = 472501.14 E = 779282.85</p> <p>QUARTER CORNER LAT. = 32.2829394°N LONG. = 103.562131°W NMSP EAST (FT) N = 467527.14 E = 780259.81</p> <p>NOTE: LATITUDE AND LONGITUDE COORDINATES ARE SHOWN USING THE NORTH AMERICAN DATUM OF 1983 (NAD83). LISTED NEW MEXICO STATE PLANE EAST COORDINATES ARE GRID (NAD83). BASIS OF BEARING AND DISTANCES USED ARE NEW MEXICO STATE PLANE EAST COORDINATES MODIFIED TO THE SURFACE. ELEVATION VALUES ARE NAVD 88.</p> <p>S/4 CORNER SEC. 27 SCALED</p>		<p>NE CORNER SEC. 22 LAT. = 32.2974530°N LONG. = 103.5516745°W NMSP EAST (FT) N = 472826.30 E = 782860.12</p> <p>E/4 CORNER SEC. 22 LAT. = 32.2901991°N LONG. = 103.5516779°W NMSP EAST (FT) N = 470187.30 E = 782878.31</p> <p>SECTION CORNER LAT. = 32.2829270°N LONG. = 103.5516698°W NMSP EAST (FT) N = 467541.76 E = 782900.10</p> <p>E/4 CORNER SEC. 27 LAT. = 32.2757053°N LONG. = 103.5516694°W NMSP EAST (FT) N = 464914.49 E = 782919.36</p> <p>SE CORNER SEC. 27 LAT. = 32.2684152°N LONG. = 103.5516675°W NMSP EAST (FT) N = 462262.37 E = 782939.28</p>		<p><b>17 OPERATOR CERTIFICATION</b> I hereby certify that the information contained herein is true and complete to the best of my knowledge and belief, and that this organization either owns a working interest or unleased mineral interest in the land including the proposed bottom hole location or has a right to drill this well at this location pursuant to a contract with an owner of such a mineral or working interest, or to a voluntary pooling agreement or a compulsory pooling order heretofore entered by the division.</p> <p> 6/21/2016 Signature Date</p> <p>David H. Cook Printed Name</p> <p>david.cook@dvn.com E-mail Address</p>
<p><b>18 SURVEYOR CERTIFICATION</b> I hereby certify that the well location shown on this plat was plotted from field notes of actual surveys made by me or under my supervision, and that the same is true and correct to the best of my belief.</p> <p>MAY 23, 2016 Date of Survey</p> <p> Signature and Seal of Professional Surveyor: Certificate Number: J. P. JARAMILLO, PLS 12797 SURVEY NO. 4696</p>						

SECTION 22, TOWNSHIP 23 SOUTH, RANGE 33 EAST, N.M.P.M.  
LEA COUNTY, STATE OF NEW MEXICO  
**SITE MAP**



0 10 50 100 200  
SCALE 1" = 100'

**DIRECTIONS TO LOCATION**

FROM STATE HIGHWAY 128 AND CR 21 (DELAWARE BASIN) GO NORTH ON CR 21 3.95 MILES, TURN LEFT ON PAVED ROAD (XL ROAD) AND GO WEST 3.4 MILES, TURN RIGHT AND GO NORTH 0.9 MILE, BEND LEFT AND GO NORTHWEST 0.15 MILE, BEND RIGHT AND GO NORTHEAST 0.1 MILE, BEND LEFT AND GO NORTH 0.95 MILE, TURN RIGHT AND GO EAST 1810 FT, LOCATION IS ON RIGHT (SOUTH) 240'.

**DEVON ENERGY PRODUCTION COMPANY, L.P.**

**THISTLE UNIT 110H**

LOCATED 305 FT. FROM THE NORTH LINE  
AND 1700 FT. FROM THE WEST LINE OF  
SECTION 22, TOWNSHIP 23 SOUTH,  
RANGE 33 EAST, N.M.P.M.  
LEA COUNTY, STATE OF NEW MEXICO

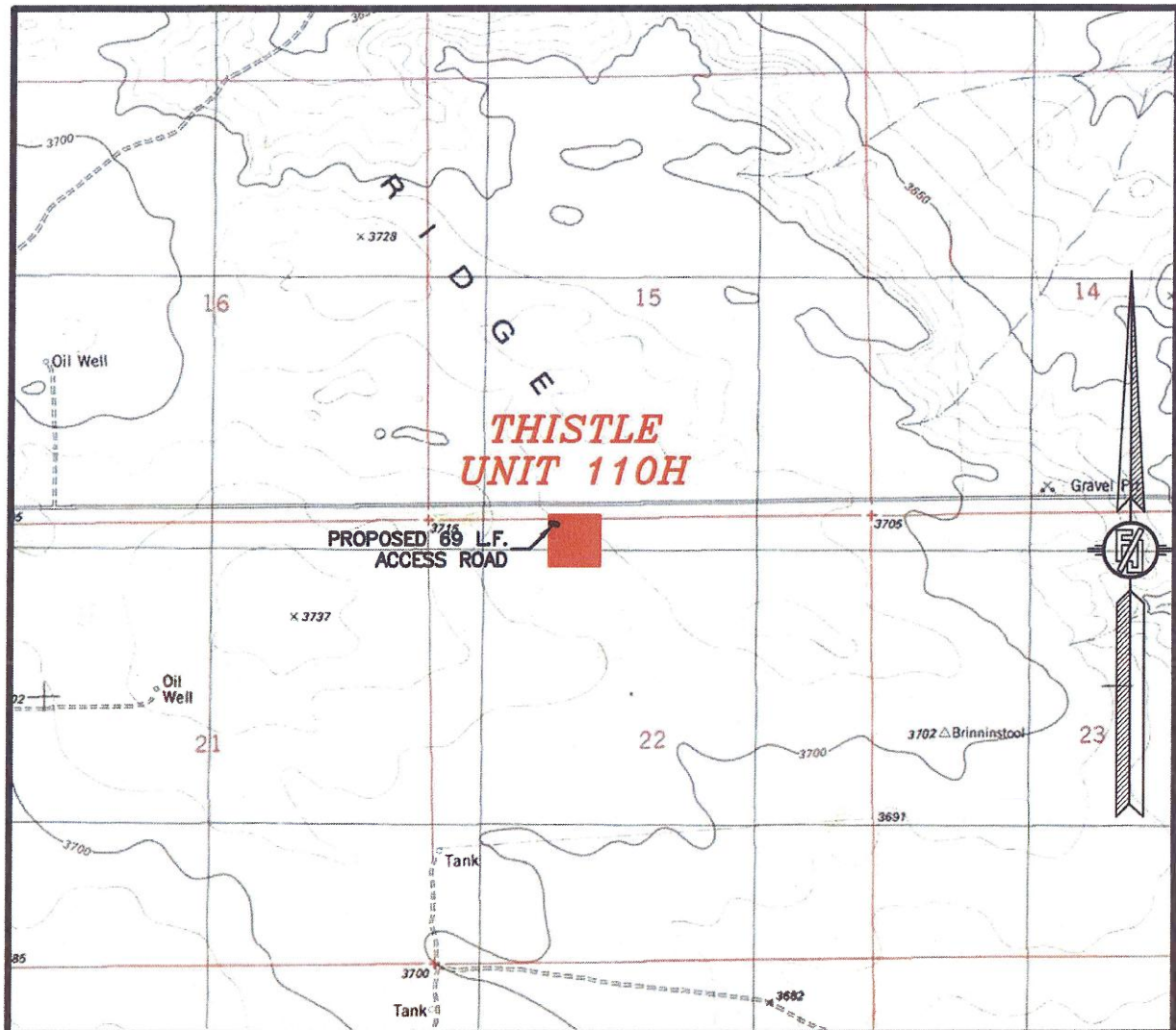
MAY 23, 2016

SURVEY NO. 4696

**MADRON SURVEYING, INC.** 301 SOUTH CANAL (575) 234-3341 **CARLSBAD, NEW MEXICO**



SECTION 22, TOWNSHIP 23 SOUTH, RANGE 33 EAST, N.M.P.M.  
LEA COUNTY, STATE OF NEW MEXICO  
LOCATION VERIFICATION MAP



USGS QUAD MAP:  
TIP TOP WELLS

NOT TO SCALE

DEVON ENERGY PRODUCTION COMPANY, L.P.  
**THISTLE UNIT 110H**

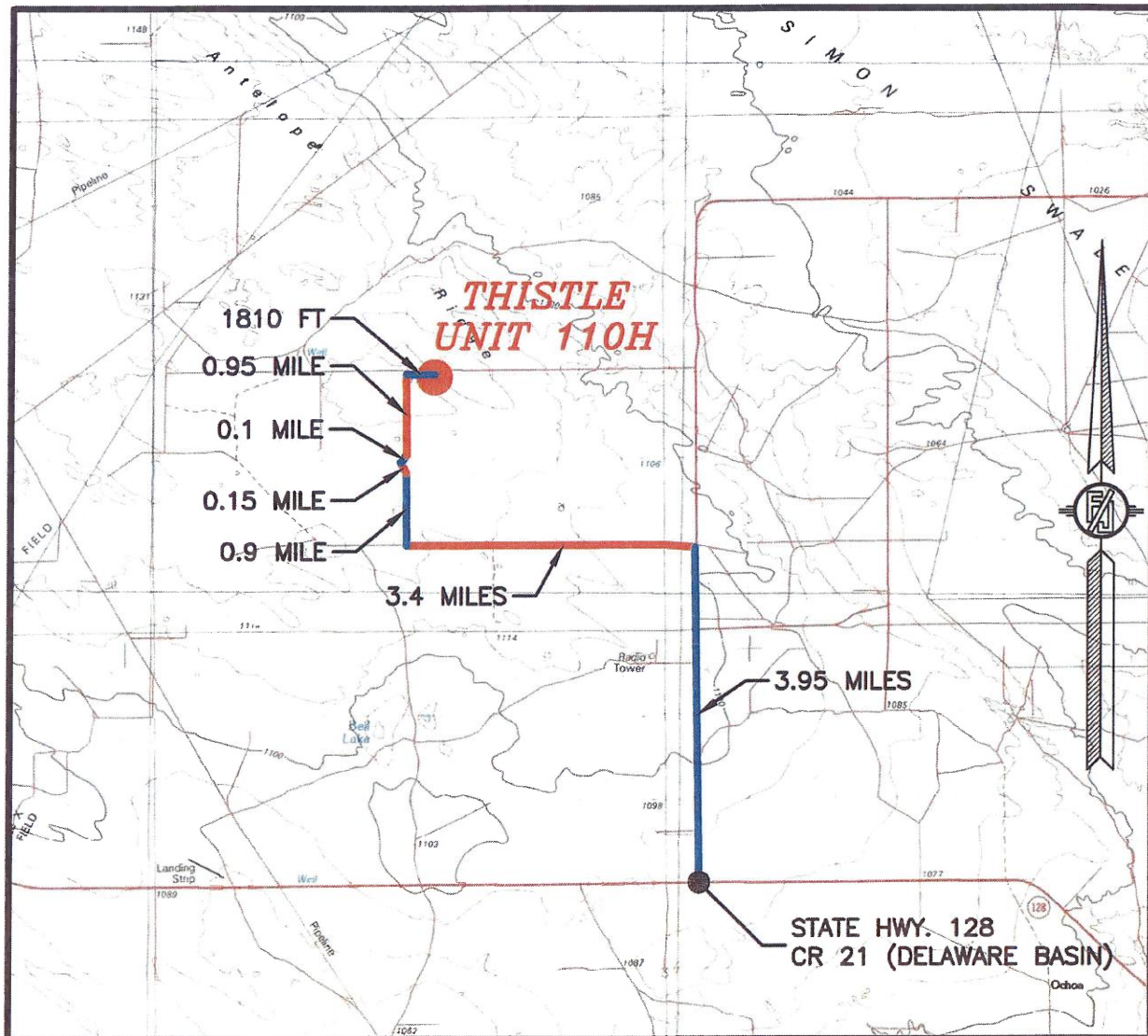
LOCATED 305 FT. FROM THE NORTH LINE  
AND 1700 FT. FROM THE WEST LINE OF  
SECTION 22, TOWNSHIP 23 SOUTH,  
RANGE 33 EAST, N.M.P.M.  
LEA COUNTY, STATE OF NEW MEXICO

MAY 23, 2016

SURVEY NO. 4696

MADRON SURVEYING, INC. 301 SOUTH CANAL (575) 234-3341 CARLSBAD, NEW MEXICO

SECTION 22, TOWNSHIP 23 SOUTH, RANGE 33 EAST, N.M.P.M.  
LEA COUNTY, STATE OF NEW MEXICO  
VICINITY MAP



DISTANCES IN MILES

NOT TO SCALE

**DIRECTIONS TO LOCATION**

FROM STATE HIGHWAY 128 AND CR 21 (DELAWARE BASIN) GO NORTH ON CR 21 3.95 MILES, TURN LEFT ON PAVED ROAD (XL ROAD) AND GO WEST 3.4 MILES, TURN RIGHT AND GO NORTH 0.9 MILE, BEND LEFT AND GO NORTHWEST 0.15 MILE, BEND RIGHT AND GO NORTHEAST 0.1 MILE, BEND LEFT AND GO NORTH 0.95 MILE, TURN RIGHT AND GO EAST 1810 FT, LOCATION IS ON RIGHT (SOUTH) 240'.

DEVON ENERGY PRODUCTION COMPANY, L.P.  
**THISTLE UNIT 110H**

LOCATED 305 FT. FROM THE NORTH LINE  
AND 1700 FT. FROM THE WEST LINE OF  
SECTION 22, TOWNSHIP 23 SOUTH,  
RANGE 33 EAST, N.M.P.M.  
LEA COUNTY, STATE OF NEW MEXICO

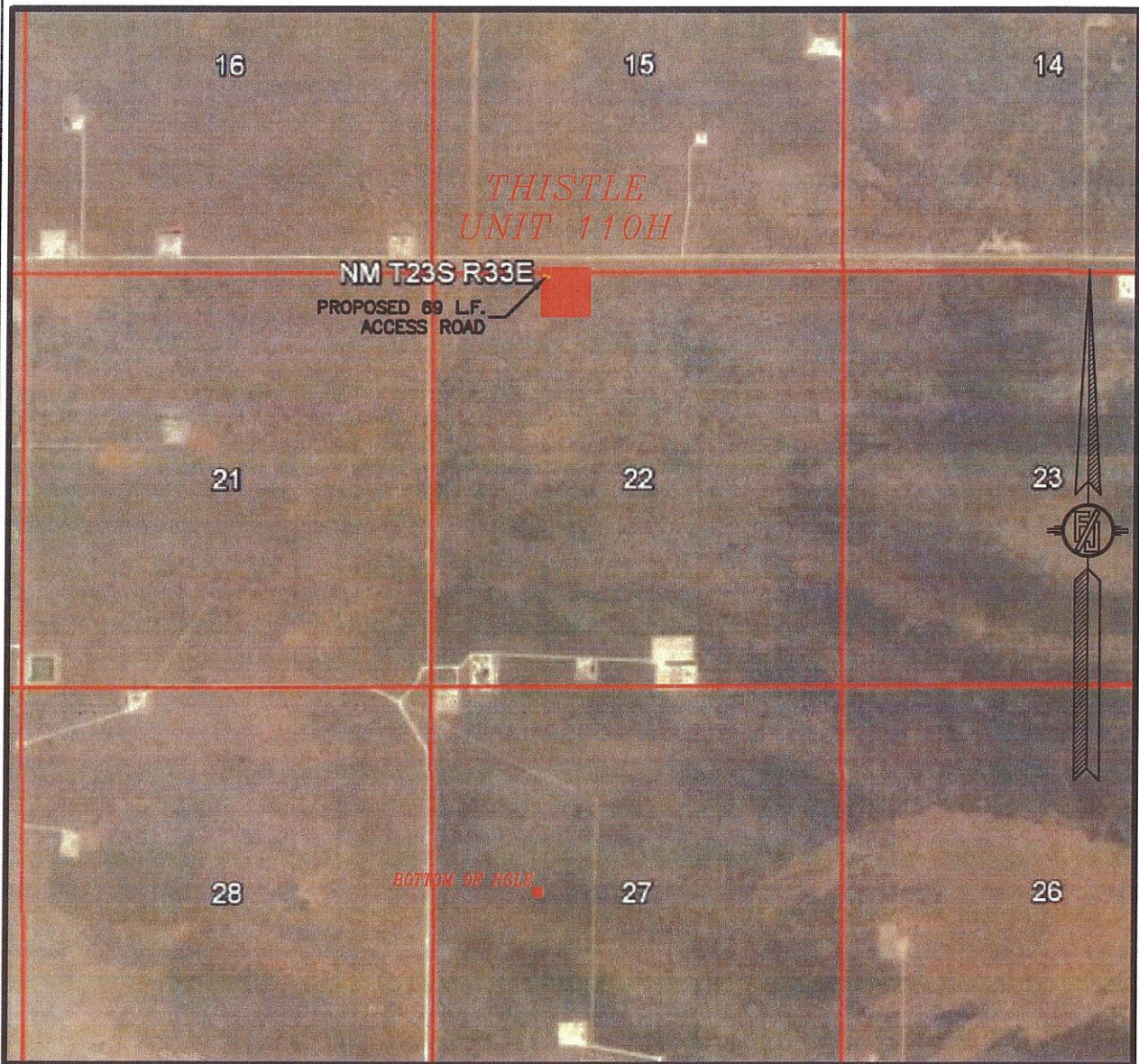
MAY 23, 2016

MADRON SURVEYING, INC. 301 SOUTH CANAL (575) 234-3341 CARLSBAD, NEW MEXICO

SURVEY NO. 4696



SECTION 22, TOWNSHIP 23 SOUTH, RANGE 33 EAST, N.M.P.M.  
LEA COUNTY, STATE OF NEW MEXICO  
AERIAL PHOTO



NOT TO SCALE  
AERIAL PHOTO:  
GOOGLE EARTH  
FEB. 2014

DEVON ENERGY PRODUCTION COMPANY, L.P.  
THISTLE UNIT 110H  
LOCATED 305 FT. FROM THE NORTH LINE  
AND 1700 FT. FROM THE WEST LINE OF  
SECTION 22, TOWNSHIP 23 SOUTH,  
RANGE 33 EAST, N.M.P.M.  
LEA COUNTY, STATE OF NEW MEXICO

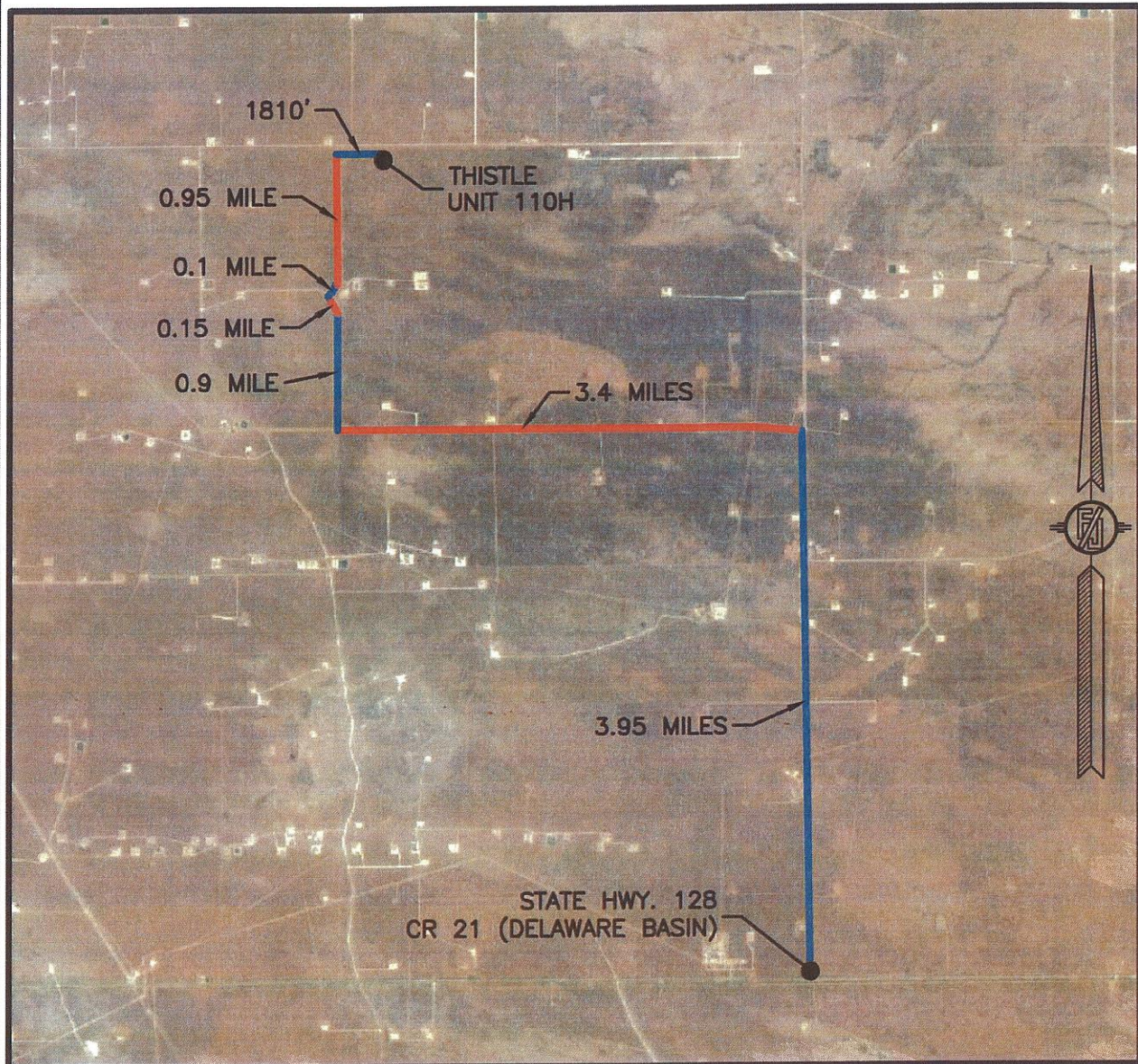
MAY 23, 2016

SURVEY NO. 4696

MADRON SURVEYING, INC. 301 SOUTH CANAL (575) 234-3341 CARLSBAD, NEW MEXICO



SECTION 22, TOWNSHIP 23 SOUTH, RANGE 33 EAST, N.M.P.M.  
LEA COUNTY, STATE OF NEW MEXICO  
AERIAL ACCESS ROUTE MAP



NOT TO SCALE  
AERIAL PHOTO:  
GOOGLE EARTH  
FEB. 2014

DEVON ENERGY PRODUCTION COMPANY, L.P.  
THISTLE UNIT 110H

LOCATED 305 FT. FROM THE NORTH LINE  
AND 1700 FT. FROM THE WEST LINE OF  
SECTION 22, TOWNSHIP 23 SOUTH,  
RANGE 33 EAST, N.M.P.M.  
LEA COUNTY, STATE OF NEW MEXICO

MAY 23, 2016

SURVEY NO. 4696

MADRON SURVEYING, INC. 301 SOUTH CANAL (575) 234-3341 CARLSBAD, NEW MEXICO