

District I
1625 N. French Dr., Hobbs, NM 88240
Phone: (575) 393-6161 Fax: (575) 393-0720
District II
811 S. First St., Artesia, NM 88210
Phone: (575) 748-1283 Fax: (575) 748-9720
District III
1000 Rio Brazos Road, Aztec, NM 87410
Phone: (505) 334-6178 Fax: (505) 334-6170
District IV
1220 S. St. Francis Dr., Santa Fe, NM 87505
Phone: (505) 476-3460 Fax: (505) 476-3462

State of New Mexico
Energy, Minerals & Natural Resources Department
OIL CONSERVATION DIVISION
1220 South St. Francis Dr.
Santa Fe, NM 87505

Form C-102
Revised August 1, 2011
Submit one copy to appropriate
District Office

☐ AMENDED REPORT

WELL LOCATION AND ACREAGE DEDICATION PLAT

¹ API Number	² Pool Code 59900	³ Pool Name TRIPLE X; BONE SPRING
⁴ Property Code	⁵ Property Name THISTLE UNIT	⁶ Well Number 114H
⁷ OGRID No. 6137	⁸ Operator Name DEVON ENERGY PRODUCTION COMPANY, L.P.	⁹ Elevation 3711.7

¹⁰ Surface Location

UL or lot no.	Section	Township	Range	Lot Idn	Feet from the	North/South line	Feet from the	East/West line	County
C	22	23 S	33 E		305	NORTH	1750	WEST	LEA

¹¹ Bottom Hole Location If Different From Surface

UL or lot no.	Section	Township	Range	Lot Idn	Feet from the	North/South line	Feet from the	East/West line	County
F	27	23 S	33 E		2630	NORTH	2230	WEST	LEA

¹² Dedicated Acres 240	¹³ Joint or Infill	¹⁴ Consolidation Code	¹⁵ Order No.
--------------------------------------	-------------------------------	----------------------------------	-------------------------

No allowable will be assigned to this completion until all interests have been consolidated or a non-standard unit has been approved by the division.

PP: 305 FNL & 2230 FWL

<p>17 OPERATOR CERTIFICATION I hereby certify that the information contained herein is true and complete to the best of my knowledge and belief, and that this organization either owns a working interest or unleased mineral interest in the land including the proposed bottom hole location or has a right to drill this well at this location pursuant to a contract with an owner of such a mineral or working interest, or to a voluntary pooling agreement or a compulsory pooling order heretofore entered by the division.</p> <p>Signature: <i>[Signature]</i> Date: 6/22/2016</p> <p>David H. Cook Printed Name</p> <p>david.cook@dvn.com E-mail Address</p>		<p>18 SURVEYOR CERTIFICATION I hereby certify that the well location shown on this plat was plotted from field notes of actual surveys made by me or under my supervision, and that the same is true and correct to the best of my belief.</p> <p>MAY 23, 2016 Date of Survey</p> <p><i>[Signature]</i> Signature and Seal of Professional Surveyor:</p> <p>Certificate Number: FELIMON F. JARAMILLO, PLS 12797 SURVEY NO. 4697</p>	
---	--	--	--

THISTLE UNIT 114H
ELEV. = 3711.7'
LAT. = 32.2966302°N (NAD83)
LONG. = 103.5630969°W
NMSP EAST (FT)
N = 472501.40
E = 779332.81

BOTTOM OF HOLE
LAT. = 32.2757136°N
LONG. = 103.5615406°W
NMSP EAST (FT)
N = 464895.43
E = 779868.46

NOTE: LATITUDE AND LONGITUDE COORDINATES ARE SHOWN USING THE NORTH AMERICAN DATUM OF 1983 (NAD83). LISTED NEW MEXICO STATE PLANE EAST COORDINATES ARE GRID (NAD83). BASIS OF BEARING AND DISTANCES USED ARE NEW MEXICO STATE PLANE EAST COORDINATES MODIFIED TO THE SURFACE. ELEVATION VALUES ARE NAVD 88.

SECTION CORNER
LAT. = 32.2829508°N
LONG. = 103.5687592°W
NMSP EAST (FT)
N = 467512.36
E = 777619.12

SECTION CORNER
LAT. = 32.2829270°N
LONG. = 103.5516698°W
NMSP EAST (FT)
N = 467541.76
E = 782900.10

SECTION CORNER
LAT. = 32.2684420°N
LONG. = 103.5687493°W
NMSP EAST (FT)
N = 462234.08
E = 777659.34

SECTION CORNER
LAT. = 32.2684152°N
LONG. = 103.5516675°W
NMSP EAST (FT)
N = 462262.37
E = 782939.28

SECTION CORNER
LAT. = 32.2974646°N
LONG. = 103.5682208°W
NMSP EAST (FT)
N = 472811.37
E = 780219.33

SECTION CORNER
LAT. = 32.2974530°N
LONG. = 103.5516745°W
NMSP EAST (FT)
N = 472826.30
E = 782860.12

SECTION CORNER
LAT. = 32.2829394°N
LONG. = 103.5602131°W
NMSP EAST (FT)
N = 467527.14
E = 780259.81

SECTION CORNER
LAT. = 32.2757053°N
LONG. = 103.5516675°W
NMSP EAST (FT)
N = 464914.49
E = 782919.36

SECTION CORNER
LAT. = 32.2756899°N
LONG. = 103.5687542°W
NMSP EAST (FT)
N = 464870.84
E = 777639.03

SECTION CORNER
LAT. = 32.2829508°N
LONG. = 103.5687592°W
NMSP EAST (FT)
N = 467512.36
E = 777619.12

SECTION CORNER
LAT. = 32.2829270°N
LONG. = 103.5516698°W
NMSP EAST (FT)
N = 467541.76
E = 782900.10

SECTION CORNER
LAT. = 32.2684420°N
LONG. = 103.5687493°W
NMSP EAST (FT)
N = 462234.08
E = 777659.34

SECTION CORNER
LAT. = 32.2684152°N
LONG. = 103.5516675°W
NMSP EAST (FT)
N = 462262.37
E = 782939.28

SECTION CORNER
LAT. = 32.2974646°N
LONG. = 103.5682208°W
NMSP EAST (FT)
N = 472811.37
E = 780219.33

SECTION CORNER
LAT. = 32.2974530°N
LONG. = 103.5516745°W
NMSP EAST (FT)
N = 472826.30
E = 782860.12

SECTION CORNER
LAT. = 32.2829394°N
LONG. = 103.5602131°W
NMSP EAST (FT)
N = 467527.14
E = 780259.81

SECTION CORNER
LAT. = 32.2757053°N
LONG. = 103.5516675°W
NMSP EAST (FT)
N = 464914.49
E = 782919.36

SECTION CORNER
LAT. = 32.2756899°N
LONG. = 103.5687542°W
NMSP EAST (FT)
N = 464870.84
E = 777639.03

SECTION CORNER
LAT. = 32.2829508°N
LONG. = 103.5687592°W
NMSP EAST (FT)
N = 467512.36
E = 777619.12

SECTION CORNER
LAT. = 32.2829270°N
LONG. = 103.5516698°W
NMSP EAST (FT)
N = 467541.76
E = 782900.10

SECTION CORNER
LAT. = 32.2684420°N
LONG. = 103.5687493°W
NMSP EAST (FT)
N = 462234.08
E = 777659.34

SECTION CORNER
LAT. = 32.2684152°N
LONG. = 103.5516675°W
NMSP EAST (FT)
N = 462262.37
E = 782939.28

SECTION CORNER
LAT. = 32.2974646°N
LONG. = 103.5682208°W
NMSP EAST (FT)
N = 472811.37
E = 780219.33

SECTION CORNER
LAT. = 32.2974530°N
LONG. = 103.5516745°W
NMSP EAST (FT)
N = 472826.30
E = 782860.12

SECTION CORNER
LAT. = 32.2829394°N
LONG. = 103.5602131°W
NMSP EAST (FT)
N = 467527.14
E = 780259.81

SECTION CORNER
LAT. = 32.2757053°N
LONG. = 103.5516675°W
NMSP EAST (FT)
N = 464914.49
E = 782919.36

SECTION CORNER
LAT. = 32.2756899°N
LONG. = 103.5687542°W
NMSP EAST (FT)
N = 464870.84
E = 777639.03

SECTION CORNER
LAT. = 32.2829508°N
LONG. = 103.5687592°W
NMSP EAST (FT)
N = 467512.36
E = 777619.12

SECTION CORNER
LAT. = 32.2829270°N
LONG. = 103.5516698°W
NMSP EAST (FT)
N = 467541.76
E = 782900.10

SECTION CORNER
LAT. = 32.2684420°N
LONG. = 103.5687493°W
NMSP EAST (FT)
N = 462234.08
E = 777659.34

SECTION CORNER
LAT. = 32.2684152°N
LONG. = 103.5516675°W
NMSP EAST (FT)
N = 462262.37
E = 782939.28

SECTION CORNER
LAT. = 32.2974646°N
LONG. = 103.5682208°W
NMSP EAST (FT)
N = 472811.37
E = 780219.33

SECTION CORNER
LAT. = 32.2974530°N
LONG. = 103.5516745°W
NMSP EAST (FT)
N = 472826.30
E = 782860.12

SECTION CORNER
LAT. = 32.2829394°N
LONG. = 103.5602131°W
NMSP EAST (FT)
N = 467527.14
E = 780259.81

SECTION CORNER
LAT. = 32.2757053°N
LONG. = 103.5516675°W
NMSP EAST (FT)
N = 464914.49
E = 782919.36

SECTION CORNER
LAT. = 32.2756899°N
LONG. = 103.5687542°W
NMSP EAST (FT)
N = 464870.84
E = 777639.03

SECTION CORNER
LAT. = 32.2829508°N
LONG. = 103.5687592°W
NMSP EAST (FT)
N = 467512.36
E = 777619.12

SECTION CORNER
LAT. = 32.2829270°N
LONG. = 103.5516698°W
NMSP EAST (FT)
N = 467541.76
E = 782900.10

SECTION CORNER
LAT. = 32.2684420°N
LONG. = 103.5687493°W
NMSP EAST (FT)
N = 462234.08
E = 777659.34

SECTION CORNER
LAT. = 32.2684152°N
LONG. = 103.5516675°W
NMSP EAST (FT)
N = 462262.37
E = 782939.28

SECTION CORNER
LAT. = 32.2974646°N
LONG. = 103.5682208°W
NMSP EAST (FT)
N = 472811.37
E = 780219.33

SECTION CORNER
LAT. = 32.2974530°N
LONG. = 103.5516745°W
NMSP EAST (FT)
N = 472826.30
E = 782860.12

SECTION CORNER
LAT. = 32.2829394°N
LONG. = 103.5602131°W
NMSP EAST (FT)
N = 467527.14
E = 780259.81

SECTION CORNER
LAT. = 32.2757053°N
LONG. = 103.5516675°W
NMSP EAST (FT)
N = 464914.49
E = 782919.36

SECTION CORNER
LAT. = 32.2756899°N
LONG. = 103.5687542°W
NMSP EAST (FT)
N = 464870.84
E = 777639.03

SECTION CORNER
LAT. = 32.2829508°N
LONG. = 103.5687592°W
NMSP EAST (FT)
N = 467512.36
E = 777619.12

SECTION CORNER
LAT. = 32.2829270°N
LONG. = 103.5516698°W
NMSP EAST (FT)
N = 467541.76
E = 782900.10

SECTION CORNER
LAT. = 32.2684420°N
LONG. = 103.5687493°W
NMSP EAST (FT)
N = 462234.08
E = 777659.34

SECTION CORNER
LAT. = 32.2684152°N
LONG. = 103.5516675°W
NMSP EAST (FT)
N = 462262.37
E = 782939.28

SECTION CORNER
LAT. = 32.2974646°N
LONG. = 103.5682208°W
NMSP EAST (FT)
N = 472811.37
E = 780219.33

SECTION CORNER
LAT. = 32.2974530°N
LONG. = 103.5516745°W
NMSP EAST (FT)
N = 472826.30
E = 782860.12

SECTION CORNER
LAT. = 32.2829394°N
LONG. = 103.5602131°W
NMSP EAST (FT)
N = 467527.14
E = 780259.81

SECTION CORNER
LAT. = 32.2757053°N
LONG. = 103.5516675°W
NMSP EAST (FT)
N = 464914.49
E = 782919.36

SECTION CORNER
LAT. = 32.2756899°N
LONG. = 103.5687542°W
NMSP EAST (FT)
N = 464870.84
E = 777639.03

SECTION CORNER
LAT. = 32.2829508°N
LONG. = 103.5687592°W
NMSP EAST (FT)
N = 467512.36
E = 777619.12

SECTION CORNER
LAT. = 32.2829270°N
LONG. = 103.5516698°W
NMSP EAST (FT)
N = 467541.76
E = 782900.10

SECTION CORNER
LAT. = 32.2684420°N
LONG. = 103.5687493°W
NMSP EAST (FT)
N = 462234.08
E = 777659.34

SECTION CORNER
LAT. = 32.2684152°N
LONG. = 103.5516675°W
NMSP EAST (FT)
N = 462262.37
E = 782939.28

SECTION CORNER
LAT. = 32.2974646°N
LONG. = 103.5682208°W
NMSP EAST (FT)
N = 472811.37
E = 780219.33

SECTION CORNER
LAT. = 32.2974530°N
LONG. = 103.5516745°W
NMSP EAST (FT)
N = 472826.30
E = 782860.12

SECTION CORNER
LAT. = 32.2829394°N
LONG. = 103.5602131°W
NMSP EAST (FT)
N = 467527.14
E = 780259.81

SECTION CORNER
LAT. = 32.2757053°N
LONG. = 103.5516675°W
NMSP EAST (FT)
N = 464914.49
E = 782919.36

SECTION CORNER
LAT. = 32.2756899°N
LONG. = 103.5687542°W
NMSP EAST (FT)
N = 464870.84
E = 777639.03

SECTION CORNER
LAT. = 32.2829508°N
LONG. = 103.5687592°W
NMSP EAST (FT)
N = 467512.36
E = 777619.12

SECTION CORNER
LAT. = 32.2829270°N
LONG. = 103.5516698°W
NMSP EAST (FT)
N = 467541.76
E = 782900.10

SECTION CORNER
LAT. = 32.2684420°N
LONG. = 103.5687493°W
NMSP EAST (FT)
N = 462234.08
E = 777659.34

SECTION CORNER
LAT. = 32.2684152°N
LONG. = 103.5516675°W
NMSP EAST (FT)
N = 462262.37
E = 782939.28

SECTION CORNER
LAT. = 32.2974646°N
LONG. = 103.5682208°W
NMSP EAST (FT)
N = 472811.37
E = 780219.33

SECTION CORNER
LAT. = 32.2974530°N
LONG. = 103.5516745°W
NMSP EAST (FT)
N = 472826.30
E = 782860.12

SECTION CORNER
LAT. = 32.2829394°N
LONG. = 103.5602131°W
NMSP EAST (FT)
N = 467527.14
E = 780259.81

SECTION CORNER
LAT. = 32.2757053°N
LONG. = 103.5516675°W
NMSP EAST (FT)
N = 464914.49
E = 782919.36

SECTION CORNER
LAT. = 32.2756899°N
LONG. = 103.5687542°W
NMSP EAST (FT)
N = 464870.84
E = 777639.03

SECTION CORNER
LAT. = 32.2829508°N
LONG. = 103.5687592°W
NMSP EAST (FT)
N = 467512.36
E = 777619.12

SECTION CORNER
LAT. = 32.2829270°N
LONG. = 103.5516698°W
NMSP EAST (FT)
N = 467541.76
E = 782900.10

SECTION CORNER
LAT. = 32.2684420°N
LONG. = 103.5687493°W
NMSP EAST (FT)
N = 462234.08
E = 777659.34

SECTION CORNER
LAT. = 32.2684152°N
LONG. = 103.5516675°W
NMSP EAST (FT)
N = 462262.37
E = 782939.28

SECTION CORNER
LAT. = 32.2974646°N
LONG. = 103.5682208°W
NMSP EAST (FT)
N = 472811.37
E = 780219.33

SECTION CORNER
LAT. = 32.2974530°N
LONG. = 103.5516745°W
NMSP EAST (FT)
N = 472826.30
E = 782860.12

SECTION CORNER
LAT. = 32.2829394°N
LONG. = 103.5602131°W
NMSP EAST (FT)
N = 467527.14
E = 780259.81

SECTION CORNER
LAT. = 32.2757053°N
LONG. = 103.5516675°W
NMSP EAST (FT)
N = 464914.49
E = 782919.36

SECTION CORNER
LAT. = 32.2756899°N
LONG. = 103.5687542°W
NMSP EAST (FT)
N = 464870.84
E = 777639.03

SECTION CORNER
LAT. = 32.2829508°N
LONG. = 103.5687592°W
NMSP EAST (FT)
N = 467512.36
E = 777619.12

SECTION CORNER
LAT. = 32.2829270°N
LONG. = 103.5516698°W
NMSP EAST (FT)
N = 467541.76
E = 782900.10

SECTION CORNER
LAT. = 32.2684420°N
LONG. = 103.5687493°W
NMSP EAST (FT)
N = 462234.08
E = 777659.34

SECTION CORNER
LAT. = 32.2684152°N
LONG. = 103.5516675°W
NMSP EAST (FT)
N = 462262.37
E = 782939.28

SECTION CORNER
LAT. = 32.2974646°N
LONG. = 103.5682208°W
NMSP EAST (FT)
N = 472811.37
E = 780219.33

SECTION CORNER
LAT. = 32.2974530°N
LONG. = 103.5516745°W
NMSP EAST (FT)
N = 472826.30
E = 782860.12

SECTION CORNER
LAT. = 32.2829394°N
LONG. = 103.5602131°W
NMSP EAST (FT)
N = 467527.14
E = 780259.81

SECTION CORNER
LAT. = 32.2757053°N
LONG. = 103.5516675°W
NMSP EAST (FT)
N = 464914.49
E = 782919.36

SECTION CORNER
LAT. = 32.2756899°N
LONG. = 103.5687542°W
NMSP EAST (FT)
N = 464870.84
E = 777639.03

SECTION CORNER
LAT. = 32.2829508°N
LONG. = 103.5687592°W
NMSP EAST (FT)
N = 467512.36
E = 777619.12

SECTION CORNER
LAT. = 32.2829270°N
LONG. = 103.5516698°W
NMSP EAST (FT)
N = 467541.76
E = 782900.10

SECTION CORNER
LAT. = 32.2684420°N
LONG. = 103.5687493°W
NMSP EAST (FT)
N = 462234.08
E = 777659.34

SECTION CORNER
LAT. = 32.2684152°N
LONG. = 103.5516675°W
NMSP EAST (FT)
N = 462262.37
E = 782939.28

SECTION CORNER
LAT. = 32.2974646°N
LONG. = 103.5682208°W
NMSP EAST (FT)
N = 472811.37
E = 780219.33

SECTION CORNER
LAT. = 32.2974530°N
LONG. = 103.5516745°W
NMSP EAST (FT)
N = 472826.30
E = 782860.12

SECTION CORNER
LAT. = 32.2829394°N
LONG. = 103.5602131°W
NMSP EAST (FT)
N = 467527.14
E = 780259.81

SECTION CORNER
LAT. = 32.2757053°N
LONG. = 103.5516675°W
NMSP EAST (FT)
N = 464914.49
E = 782919.36

SECTION CORNER
LAT. = 32.2756899°N
LONG. = 103.5687542°W
NMSP EAST (FT)
N = 464870.84
E = 777639.03

SECTION CORNER
LAT. = 32.2829508°N
LONG. = 103.5687592°W
NMSP EAST (FT)
N = 467512.36
E = 777619.12

SECTION CORNER
LAT. = 32.2829270°N
LONG. = 103.5516698°W
NMSP EAST (FT)
N = 467541.76
E = 782900.10

SECTION CORNER
LAT. = 32.2684420°N
LONG. = 103.5687493°W
NMSP EAST (FT)
N = 462234.08
E = 777659.34

SECTION CORNER
LAT. = 32.2684152°N
LONG. = 103.5516675°W
NMSP EAST (FT)
N = 462262.37
E = 782939.28

SECTION CORNER
LAT. = 32.2974646°N
LONG. = 103.5682208°W
NMSP EAST (FT)
N = 472811.37
E = 780219.33

SECTION CORNER
LAT. = 32.2974530°N
LONG. = 103.5516745°W
NMSP EAST (FT)
N = 472826.30
E = 782860.12

SECTION CORNER
LAT. = 32.2829394°N
LONG. = 103.5602131°W
NMSP EAST (FT)
N = 467527.14
E = 780259.81

SECTION CORNER
LAT. = 32.2757053°N
LONG. = 103.5516675°W
NMSP EAST (FT)
N = 464914.49
E = 782919.36

SECTION CORNER
LAT. = 32.2756899°N
LONG. = 103.5687542°W
NMSP EAST (FT)
N = 464870.84
E = 777639.03

SECTION CORNER
LAT. = 32.2829508°N
LONG. = 103.5687592°W
NMSP EAST (FT)
N = 467512.36
E = 777619.12

SECTION CORNER
LAT. = 32.2829270°N
LONG. = 103.5516698°W
NMSP EAST (FT)
N = 467541.76
E = 782900.10

SECTION CORNER
LAT. = 32.2684420°N
LONG. = 103.5687493°W
NMSP EAST (FT)
N = 462234.08
E = 777659.34

SECTION CORNER
LAT. = 32.2684152°N
LONG. = 103.5516675°W
NMSP EAST (FT)
N = 462262.37
E = 782939.28

SECTION CORNER
LAT. = 32.2974646°N
LONG. = 103.5682208°W
NMSP EAST (FT)
N = 472811.37
E = 780219.33

SECTION CORNER
LAT. = 32.2974530°N
LONG. = 103.5516745°W
NMSP EAST (FT)
N = 472826.30
E = 782860.12

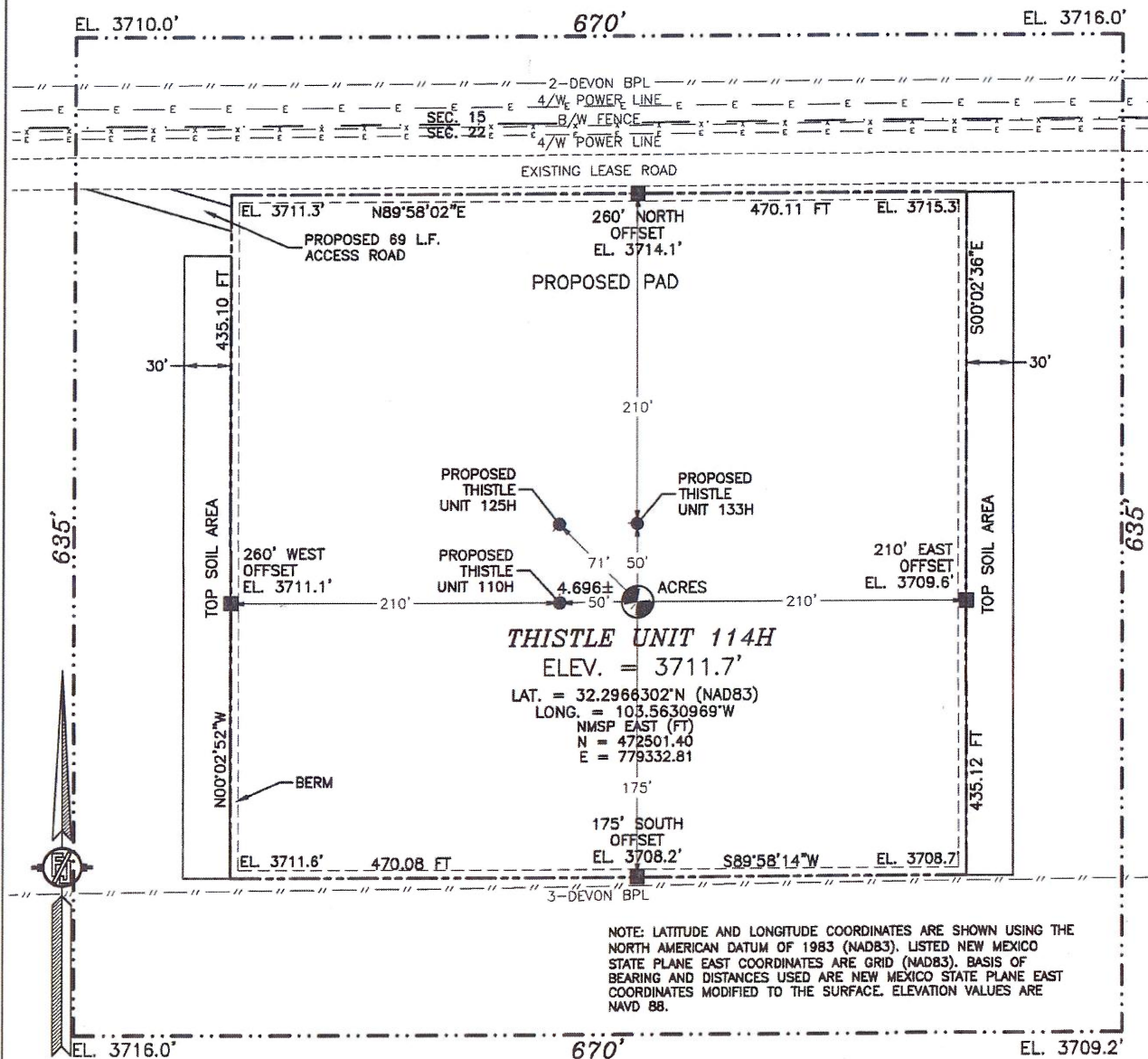
SECTION CORNER
LAT. = 32.2829394°N
LONG. = 103.5602131°W
NMSP EAST (FT)
N = 467527.14
E = 780259.81

SECTION CORNER
LAT. = 32.2757053°N
LONG. = 103.5516675°W
NMSP EAST (FT)
N = 464914.49
E = 782919.36

SECTION CORNER
LAT. = 32.2756899°N
LONG. = 103.5687542°W
NMSP EAST (FT)
N = 464870.84
E = 777639.03

SECTION

SECTION 22, TOWNSHIP 23 SOUTH, RANGE 33 EAST, N.M.P.M.
LEA COUNTY, STATE OF NEW MEXICO
SITE MAP



010 50 100 200
SCALE 1" = 100'

DIRECTIONS TO LOCATION

FROM STATE HIGHWAY 128 AND CR 21 (DELAWARE BASIN) GO NORTH ON CR 21 3.95 MILES, TURN LEFT ON PAVED ROAD (XL ROAD) AND GO WEST 3.4 MILES, TURN RIGHT AND GO NORTH 0.9 MILE, BEND LEFT AND GO NORTHWEST 0.15 MILE, BEND RIGHT AND GO NORTHEAST 0.1 MILE, BEND LEFT AND GO NORTH 0.95 MILE, TURN RIGHT AND GO EAST 1810 FT, LOCATION IS ON RIGHT (SOUTH) 240'.

DEVON ENERGY PRODUCTION COMPANY, L.P.

THISTLE UNIT 114H

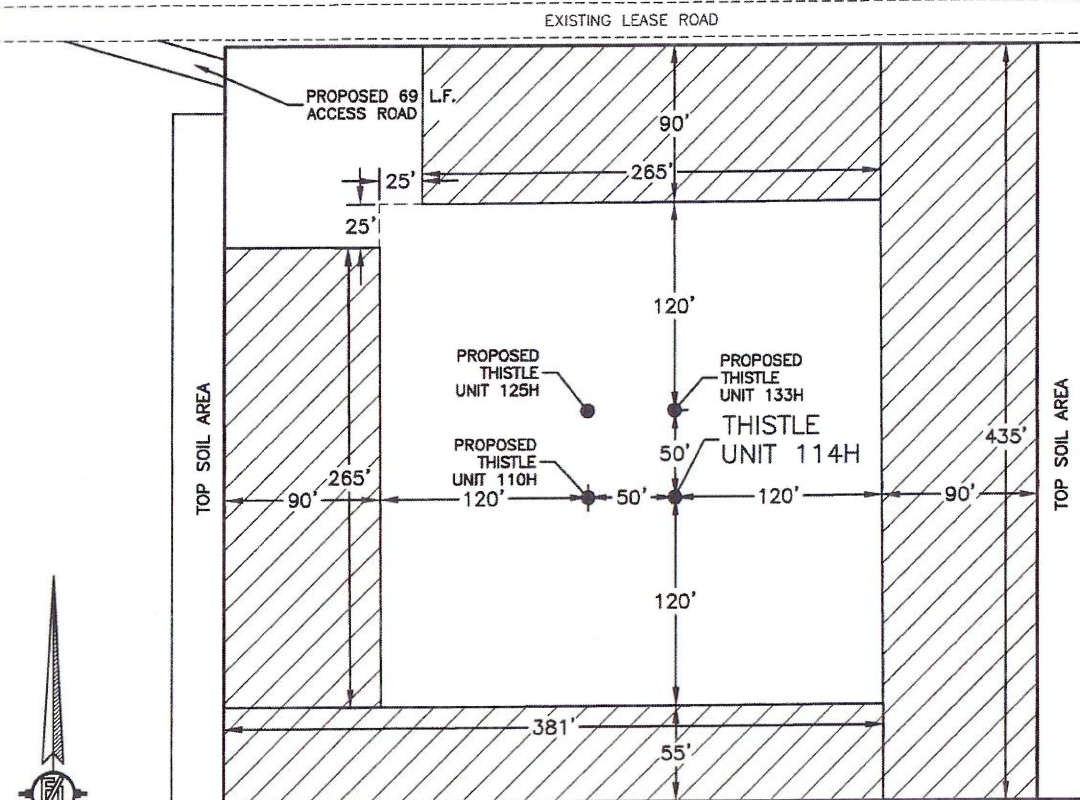
LOCATED 305 FT. FROM THE NORTH LINE
AND 1750 FT. FROM THE WEST LINE OF
SECTION 22, TOWNSHIP 23 SOUTH,
RANGE 33 EAST, N.M.P.M.
LEA COUNTY, STATE OF NEW MEXICO

MAY 23, 2016

SURVEY NO. 4697

MADRON SURVEYING, INC. 301 SOUTH CANAL (575) 234-3341 CARLSBAD, NEW MEXICO

**PROPOSED INTERIM SITE RECLAMATION
FOR THISTLE UNIT 114H
SECTION 22, TOWNSHIP 23 SOUTH, RANGE 33 EAST, N.M.P.M.
LEA COUNTY, STATE OF NEW MEXICO**



 DENOTES
RECLAMATION AREA
2.476± ACRES RECLAMATION AREA



010 50 100 200
SCALE 1" = 100'

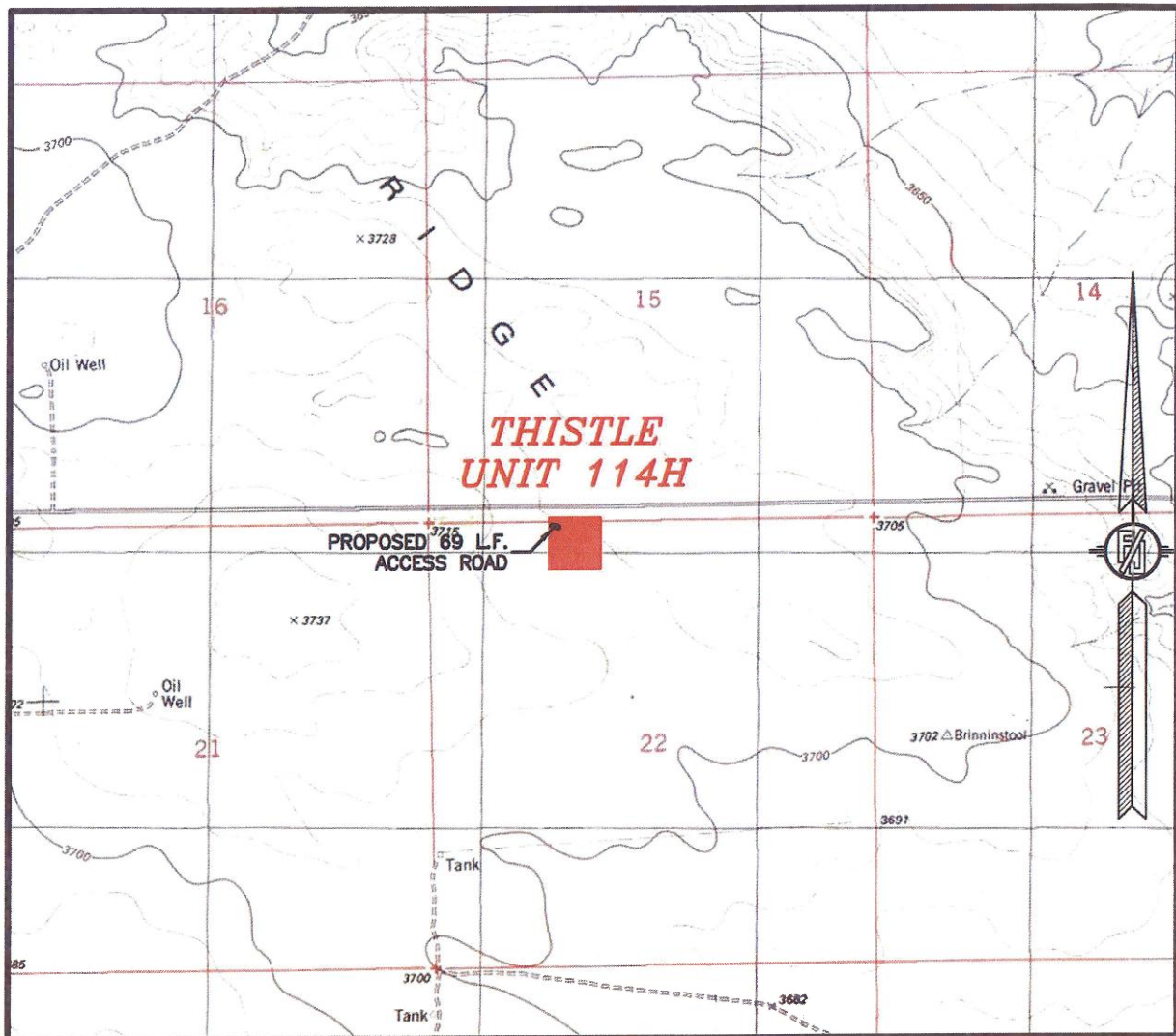
DEVON ENERGY PRODUCTION COMPANY, L.P.
THISTLE UNIT 114H
 LOCATED 305 FT. FROM THE NORTH LINE
 AND 1750 FT. FROM THE WEST LINE OF
 SECTION 22, TOWNSHIP 23 SOUTH,
 RANGE 33 EAST, N.M.P.M.
 LEA COUNTY, STATE OF NEW MEXICO

MAY 23, 2016

SURVEY NO. 4697

MADRON SURVEYING, INC. 301 SOUTH CANAL (575) 234-3341 **CARLSBAD, NEW MEXICO**

SECTION 22, TOWNSHIP 23 SOUTH, RANGE 33 EAST, N.M.P.M.
LEA COUNTY, STATE OF NEW MEXICO
LOCATION VERIFICATION MAP



USGS QUAD MAP:
TIP TOP WELLS

NOT TO SCALE

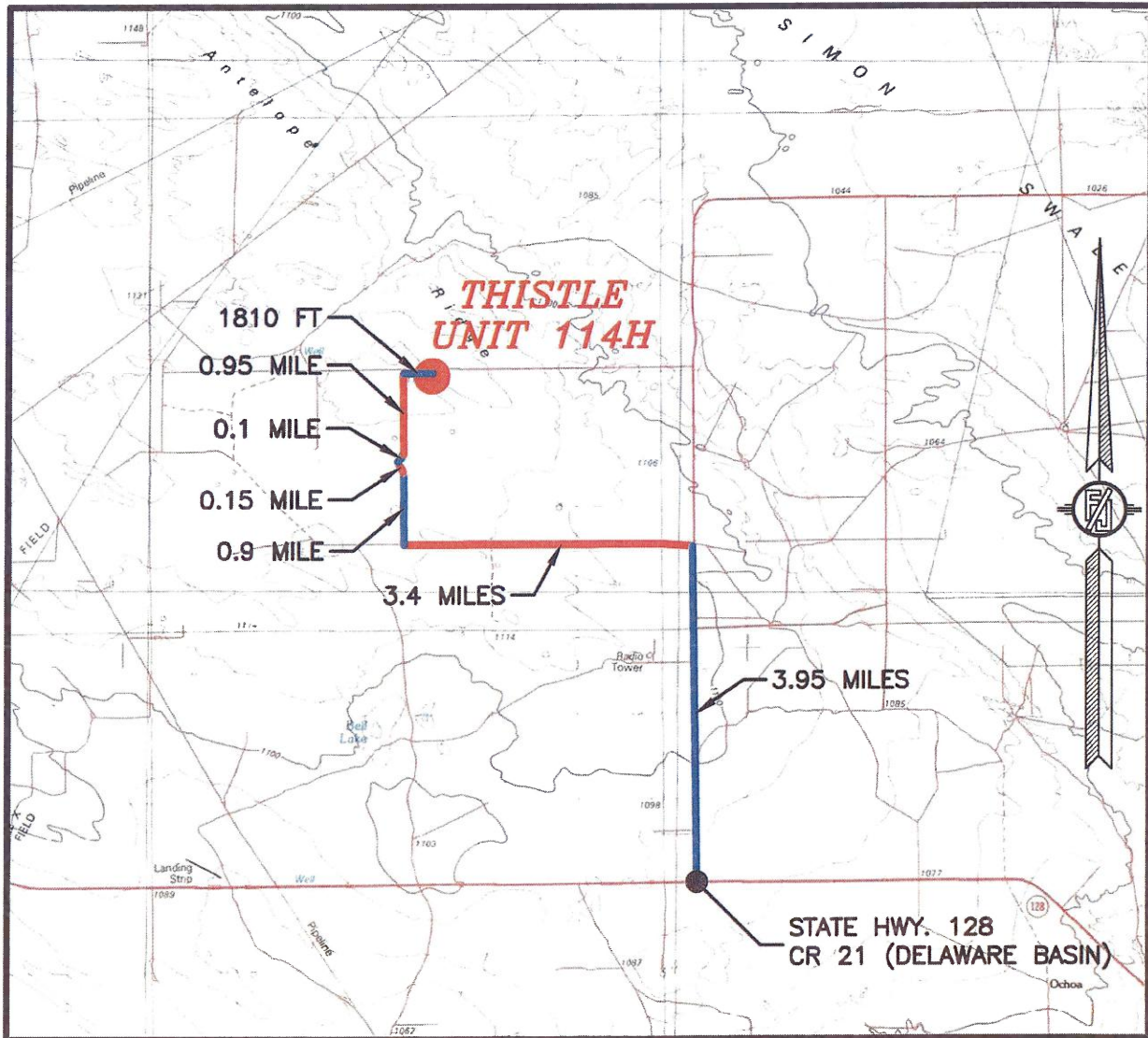
DEVON ENERGY PRODUCTION COMPANY, L.P.
THISTLE UNIT 114H
LOCATED 305 FT. FROM THE NORTH LINE
AND 1750 FT. FROM THE WEST LINE OF
SECTION 22, TOWNSHIP 23 SOUTH,
RANGE 33 EAST, N.M.P.M.
LEA COUNTY, STATE OF NEW MEXICO

MAY 23, 2016

SURVEY NO. 4697

MADRON SURVEYING, INC. 301 SOUTH CANAL (575) 234-3341 CARLSBAD, NEW MEXICO

SECTION 22, TOWNSHIP 23 SOUTH, RANGE 33 EAST, N.M.P.M.
LEA COUNTY, STATE OF NEW MEXICO
VICINITY MAP



DISTANCES IN MILES

NOT TO SCALE

DIRECTIONS TO LOCATION

FROM STATE HIGHWAY 128 AND CR 21 (DELAWARE BASIN) GO NORTH ON CR 21 3.95 MILES, TURN LEFT ON PAVED ROAD (XL ROAD) AND GO WEST 3.4 MILES, TURN RIGHT AND GO NORTH 0.9 MILE, BEND LEFT AND GO NORTHWEST 0.15 MILE, BEND RIGHT AND GO NORTHEAST 0.1 MILE, BEND LEFT AND GO NORTH 0.95 MILE, TURN RIGHT AND GO EAST 1810 FT, LOCATION IS ON RIGHT (SOUTH) 240°.

DEVON ENERGY PRODUCTION COMPANY, L.P.

THISTLE UNIT 114H

LOCATED 305 FT. FROM THE NORTH LINE
AND 1750 FT. FROM THE WEST LINE OF
SECTION 22, TOWNSHIP 23 SOUTH,
RANGE 33 EAST, N.M.P.M.
LEA COUNTY, STATE OF NEW MEXICO

MAY 23, 2016

MADRON SURVEYING, INC. 301 SOUTH CANAL (575) 234-3341 CARLSBAD, NEW MEXICO

SURVEY NO. 4697

SECTION 22, TOWNSHIP 23 SOUTH, RANGE 33 EAST, N.M.P.M.
LEA COUNTY, STATE OF NEW MEXICO
AERIAL PHOTO



NOT TO SCALE
AERIAL PHOTO:
GOOGLE EARTH
FEB. 2014

DEVON ENERGY PRODUCTION COMPANY, L.P.
THISTLE UNIT 114H

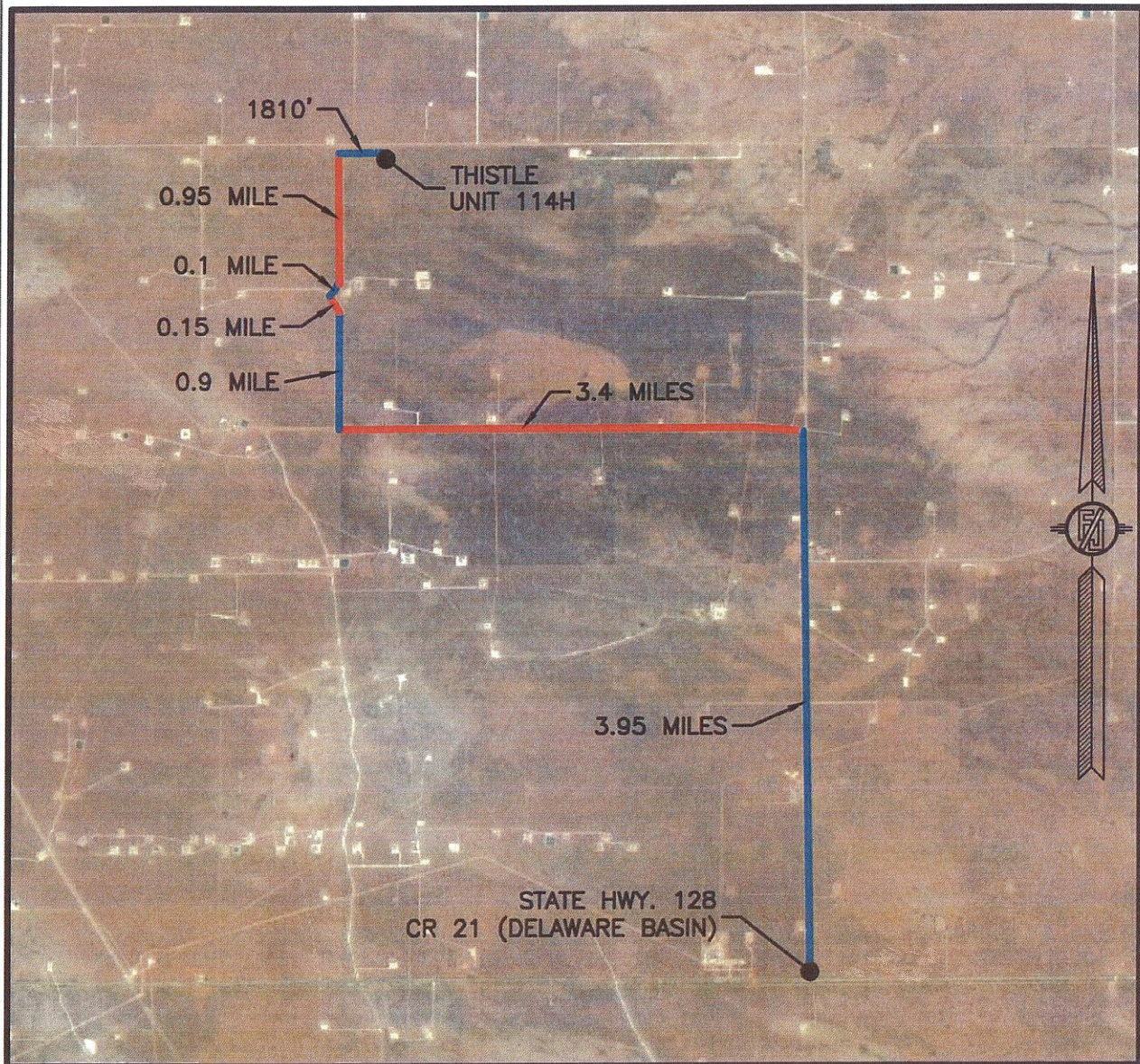
LOCATED 305 FT. FROM THE NORTH LINE
AND 1750 FT. FROM THE WEST LINE OF
SECTION 22, TOWNSHIP 23 SOUTH,
RANGE 33 EAST, N.M.P.M.
LEA COUNTY, STATE OF NEW MEXICO

MAY 23, 2016

SURVEY NO. 4697

MADRON SURVEYING, INC. 301 SOUTH CANAL (575) 234-3341 CARLSBAD, NEW MEXICO

SECTION 22, TOWNSHIP 23 SOUTH, RANGE 33 EAST, N.M.P.M.
LEA COUNTY, STATE OF NEW MEXICO
AERIAL ACCESS ROUTE MAP



NOT TO SCALE
AERIAL PHOTO:
GOOGLE EARTH
FEB. 2014

DEVON ENERGY PRODUCTION COMPANY, L.P.
THISTLE UNIT 114H

LOCATED 305 FT. FROM THE NORTH LINE
AND 1750 FT. FROM THE WEST LINE OF
SECTION 22, TOWNSHIP 23 SOUTH,
RANGE 33 EAST, N.M.P.M.
LEA COUNTY, STATE OF NEW MEXICO

MAY 23, 2016

SURVEY NO. 4697

MADRON SURVEYING, INC. 301 SOUTH CANAL (575) 234-3341 CARLSBAD, NEW MEXICO