

District I  
1625 N. French Dr., Hobbs, NM 88240  
Phone: (575) 393-6161 Fax: (575) 393-0720  
District II  
811 S. First St., Artesia, NM 88210  
Phone: (575) 748-1283 Fax: (575) 748-9720  
District III  
1000 Rio Brazos Road, Aztec, NM 87410  
Phone: (505) 334-6178 Fax: (505) 334-6170  
District IV  
1220 S. St. Francis Dr., Santa Fe, NM 87505  
Phone: (505) 476-3460 Fax: (505) 476-3462

State of New Mexico  
Energy, Minerals & Natural Resources Department  
OIL CONSERVATION DIVISION  
1220 South St. Francis Dr.  
Santa Fe, NM 87505

**OCD - HOBBS**

**06/23/2016**

**RECEIVED**

Form C-102  
Revised August 1, 2011  
Submit one copy to appropriate  
District Office

☐ AMENDED REPORT

WELL LOCATION AND ACREAGE DEDICATION PLAT

<sup>1</sup> API Number <b>30-025-43313</b> ✓		<sup>2</sup> Pool Code <b>98155</b>		<sup>3</sup> Pool Name <b>WC-025 G-01 S103610H; SAN ANDRES</b> <i>KZ</i>	
<sup>4</sup> Property Code <b>316339</b> ✓		<sup>5</sup> Property Name <b>FIRE EAGLE STATE SAN ANDRES UNIT</b> ✓			<sup>6</sup> Well Number <b>2H</b> ✓
<sup>7</sup> OGRID NO. <b>873</b> ✓		<sup>8</sup> Operator Name <b>APACHE CORPORATION</b> ✓			<sup>9</sup> Elevation <b>3997'</b>

<sup>10</sup> Surface Location

UL or lot no. <b>H</b>	Section <b>11</b>	Township <b>10S</b>	Range <b>36E</b>	Lot Idn	Feet from the <b>2600</b>	North/South line <b>NORTH</b>	Feet From the <b>380</b>	East/West line <b>EAST</b>	County <b>LEA</b> ✓
---------------------------	----------------------	------------------------	---------------------	---------	------------------------------	----------------------------------	-----------------------------	-------------------------------	------------------------

<sup>11</sup> Bottom Hole Location If Different From Surface

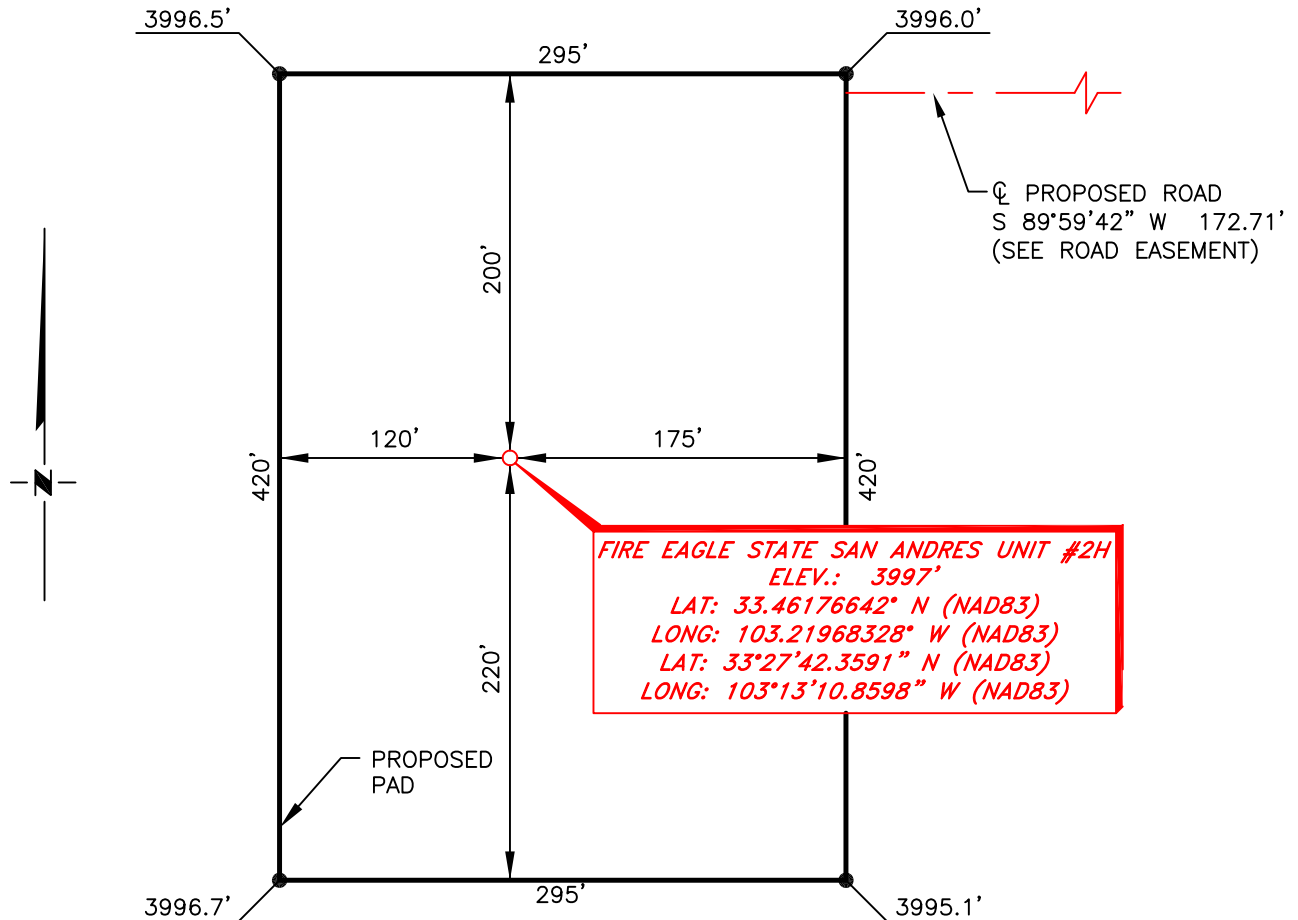
UL or lot no. <b>1</b>	Section <b>2</b>	Township <b>10S</b>	Range <b>36E</b>	Lot Idn	Feet from the <b>330</b>	North/South line <b>NORTH</b>	Feet from the <b>380</b>	East/West line <b>EAST</b>	County <b>LEA</b> ✓
---------------------------	---------------------	------------------------	---------------------	---------	-----------------------------	----------------------------------	-----------------------------	-------------------------------	------------------------

<sup>12</sup> Dedicated Acres <b>240</b>	<sup>13</sup> Joint or Infill	<sup>14</sup> Consolidation Code	<sup>15</sup> Order No.
---	-------------------------------	----------------------------------	-------------------------

No allowable will be assigned to this completion until all interest have been consolidated or a non-standard unit has been approved by the division.

	<p><b>17 OPERATOR CERTIFICATION</b> I hereby certify that the information contained herein is true and complete to the best of my knowledge and belief, and that this organization either owns a working interest or unleased mineral interest in the land including the proposed bottom hole location or has a right to drill this well at this location pursuant to a contract with an owner of such a mineral or working interest, or to a voluntary pooling agreement or a compulsory pooling order heretofore entered by the division.</p> <p><i>Sorina L Flores</i> 6/22/16 Signature Date <b>SORINA L. FLORES</b> Printed Name sorina.flores@apachecorp.com E-mail Address</p>
	<p><b>18 SURVEYOR CERTIFICATION</b> I hereby certify that the well location shown on this plat was plotted from field notes of actual surveys made by me or under my supervision, and that the same is true and correct to the best of my belief.</p> <p><b>6-16-2016</b> Date of Survey Signature and Seal of Professional Surveyor:  <b>19680</b> Certificate Number</p>
	<p><b>GEODETIC DATA</b> NAD 83 GRID - NM EAST</p> <p><b>SURFACE LOCATION</b> N: 897365.4 - E: 880975.4 LAT. 33.46176642° N LONG. 103.21968328° W LAT. 33°27'42.3591" N LONG. 103°13'10.8598 W</p> <p><b>BOTTOM LOCATION</b> N: 904926.4 - E: 880930.7 LAT. 33.48254416° N LONG. 103.21956405° W LAT. 33°28'57.1590" N LONG. 103°13'10.4306" W</p> <p><b>CORNER DATA</b> NAD 83 GRID - NM EAST</p> <p>A - N: 894632.7, E: 876111.3 B - N: 899913.3, E: 876053.5 C - N: 905207.3, E: 876028.9 D - N: 905260.2, E: 881309.7 E - N: 899968.9, E: 881324.6 F - N: 894690.0, E: 881386.9 G - N: 894658.0, E: 878747.7</p> <p>1 - N: 897329.5, E: 881355.8 2 - N: 897315.3, E: 880037.1 3 - N: 899955.0, E: 880006.9 4 - N: 905247.0, E: 879989.5</p>
	<p>RRC - Firm No.: TX 10193838 NM 4655451 - Job No.: LS1606223</p>

**APACHE CORPORATION**  
**FIRE EAGLE STATE SAN ANDRES UNIT #2H**  
**(2600' FNL & 380' FEL)**  
**SECTION 11, T10S, R36E**  
**N. M. P. M., LEA CO., NEW MEXICO**



**DIRECTIONS TO LOCATION**

*From the intersection of SR-206 and SR-508 in Croassroads, N.M.  
 Go East on SR-508 approx. 6.1 miles to a lease road on the right;  
 Turn right and go South approx. 2.7 miles to the beginning of a proposed road;  
 Continue going South approx. 0.6 miles to a proposed road on the right;  
 Turn right and go West approx. 348 feet to location on the left.*

SCALE: 1" = 100'  
 0 50 100  
 BEARINGS ARE  
 NAD 83 GRID - NM EAST  
 DISTANCES ARE  
 GROUND.



Firm No.: TX 10193838 NM 4655451

Copyright 2014 - All Rights Reserved

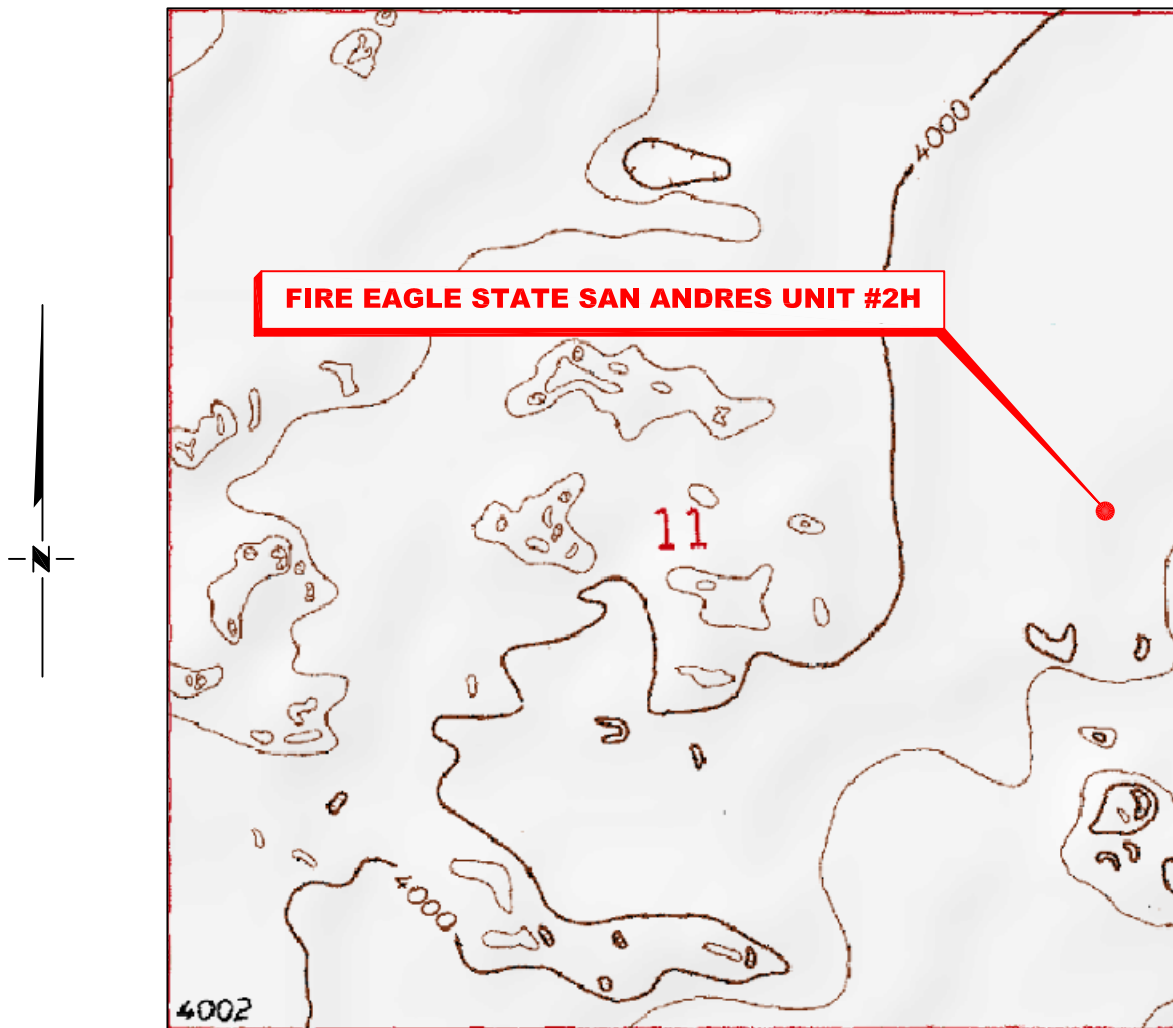
NO.	REVISION	DATE
JOB NO.:	LS1606223	
DWG. NO.:	1606223PAD	

**RRC**

308 W. BROADWAY ST., HOBBS, NM 88240 (575) 964-8200

SCALE: 1" = 100'
DATE: 6-16-2016
SURVEYED BY: BK/HD
DRAWN BY: CMJ
APPROVED BY: RMH
SHEET : 1 OF 1

# LOCATION VERIFICATION MAP



*SECTION 11, TWP. 10 SOUTH, RGE. 36 EAST,  
N. M. P. M., LEA CO., NEW MEXICO*

OPERATOR: Apache Corporation  
LEASE: Fire Eagle State San Andres Unit  
WELL NO.: 2H  
ELEVATION: 3997'

LOCATION: 2600' FNL & 380' FEL  
CONTOUR INTERVAL: 10'  
USGS TOPO. SOURCE MAP:  
Walking Cane Ranch, NM (P. E. 1985)

Firm No.: TX 10193838 NM 4655451

Copyright 2014 - All Rights Reserved

NO.	REVISION	DATE
JOB NO.: LS1606223		
DWG. NO.: 1606223LVM		

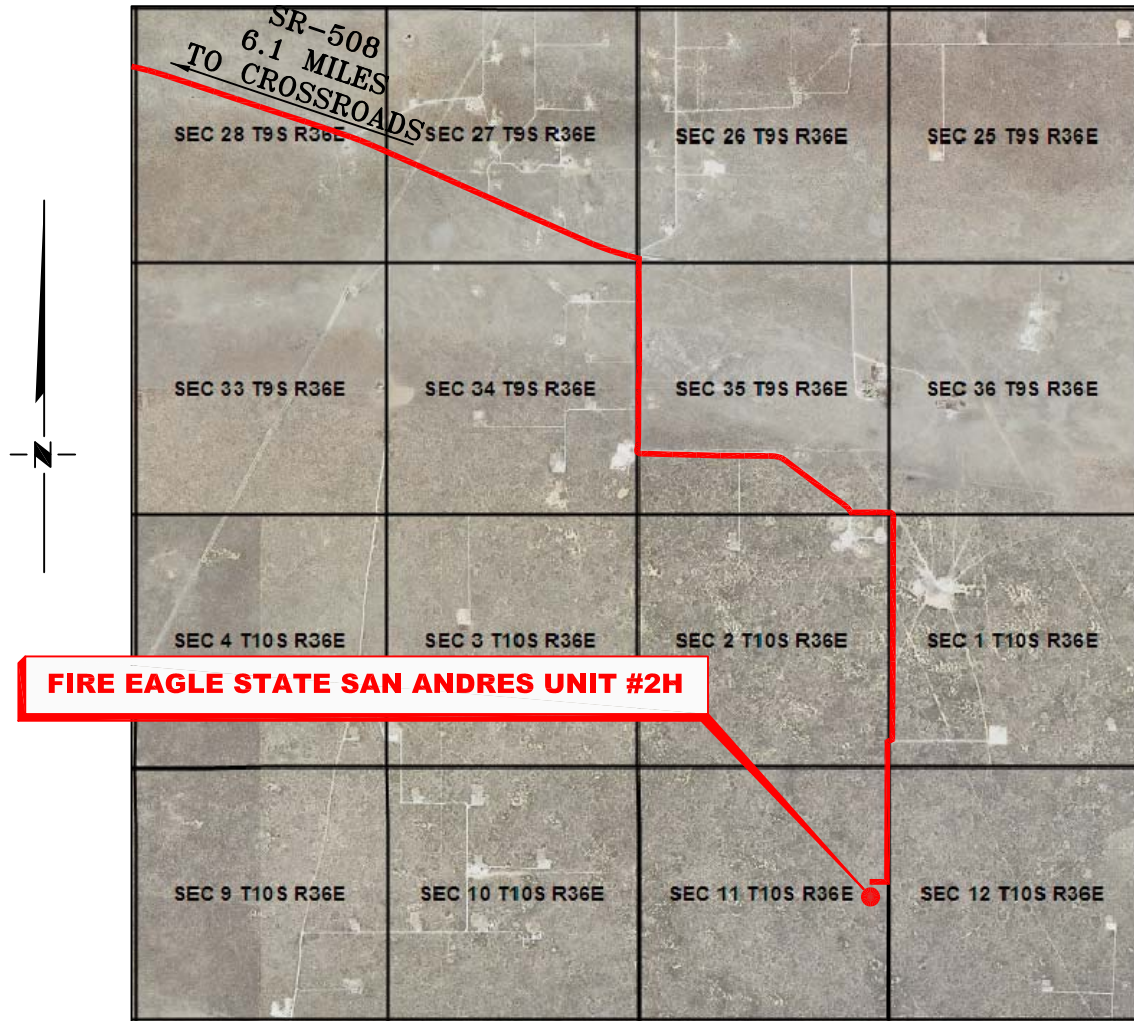
## RRC

308 W. BROADWAY ST., HOBBS, NM 88240 (575) 964-8200

SCALE: 1" = 1000'
DATE: 6-16-2016
SURVEYED BY: BK/HD
DRAWN BY: CMJ
APPROVED BY: RMH
SHEET : 1 OF 1

# VICINITY MAP

NOT TO SCALE



*Tatum is located approximately 15.2 miles to the Southwest.*

**SECTION 11, TWP. 10 SOUTH, RGE. 36 EAST,  
N. M. P. M., LEA CO., NEW MEXICO**

OPERATOR: Apache Corporation  
LEASE: Fire Eagle State San Andres Unit  
WELL NO.: 2H

LOCATION: 2600' FNL & 380' FEL  
ELEVATION: 3997'

Firm No.: TX 10193838 NM 4655451

Copyright 2014 - All Rights Reserved

NO.	REVISION	DATE
JOB NO.: LS1606223		
DWG. NO.: 1606223VM		

# RRC

308 W. BROADWAY ST., HOBBS, NM 88240 (575) 964-8200

SCALE: NTS
DATE: 6-16-2016
SURVEYED BY: BK/HD
DRAWN BY: CMJ
APPROVED BY: RMH
SHEET : 1 OF 1

**APACHE CORPORATION  
OVERALL OF PROPOSED ACCESS ROAD  
FOR THE FIRE EAGLE STATE SAN ANDRES UNIT #2H  
SECTIONS 1, 2 & 11, T10S, R36E,  
N. M. P. M., LEA CO., NEW MEXICO**



LINE TABLE		
LINE	BEARING	LENGTH
L1	S 00°58'53" E	197.21'
L2	S 62°22'14" W	114.94'
L3	S 00°40'37" E	2,946.84'
L4	S 89°59'42" W	172.71'

SCALE: 1" = 2000'  
0 500' 2000'

BEARINGS ARE GRID NAD 27  
NM EAST  
DISTANCES ARE HORIZ. GROUND.

LEGEND  
( ) RECORD DATA - GLO  
◆ FOUND MONUMENT AS NOTED  
— PROPOSED ROAD

I, R. M. Howett, a N. M. Professional Surveyor, hereby certify that I prepared this plat from an actual survey made on the ground under my direct supervision, said survey and plat meet the Min. Stds. for Land Surveying in the State of N. M. and are true and correct to the best of my knowledge and belief.

*Robert M. Howett*  
Robert M. Howett

NM PS 19680



Firm No.: TX 10193838 NM 4655451

Copyright 2014 - All Rights Reserved

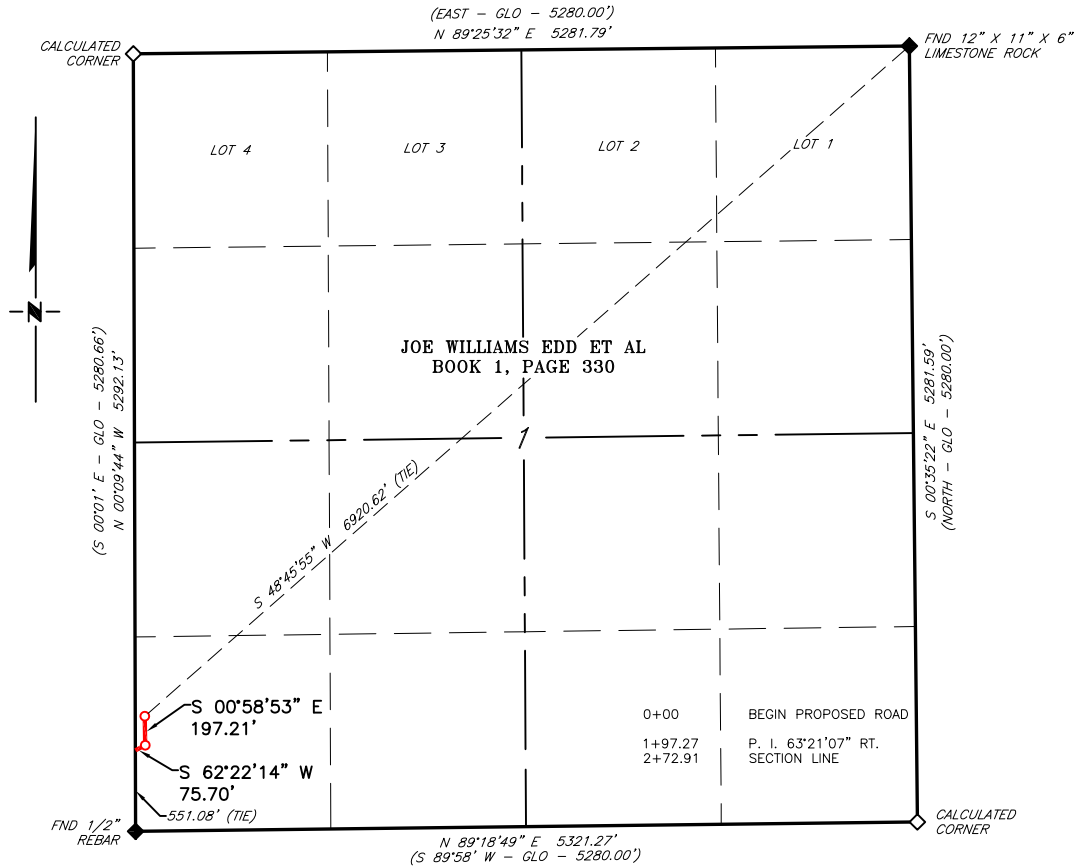
NO.	REVISION	DATE
JOB NO.:	LS1606223	
DWG. NO.:	1606223-1	

**RRC**

308 W. BROADWAY ST., HOBBS, NM 88240 (575) 964-8200

SCALE: 1" = 2000'  
DATE: 6-16-2016  
SURVEYED BY: BK/HD  
DRAWN BY: CMJ  
APPROVED BY: RMH  
SHEET : 1 OF 4

**APACHE CORPORATION  
PROPOSED ACCESS ROAD  
FOR THE FIRE EAGLE STATE SAN ANDRES UNIT #2H  
SECTION 1, T10S, R36E  
N. M. P. M., LEA CO., NEW MEXICO**



**DESCRIPTION**

A strip of land 20 feet wide, being 272.91 feet or 16.540 rods in length, lying in Section 1, Township 10 South, Range 36 East, N. M. P. M., Lea County, New Mexico, being 10 feet left and 10 feet right of the following described survey of a centerline across the lands of Joe Williams EDD ET. AL. according to a deed filed for record in Book 1, Page 330, of the deed records of Lea County, New Mexico:

BEGINNING at Engr. Sta. 0+00, a point in the Southwest quarter of Section 1, which bears, S 48°45'55" W, 6,920.62 feet, from a 12"x11"x6" limestone rock, found for the Northeast corner of Section 1;

Thence S 00°58'53" E, 197.21 feet, to Engr. Sta. 1+97.21, a P. I. of 63°21'07" right;

Thence S 62°22'14" W, 75.70 feet, to Engr. Sta. 2+72.91, to a point on the West line of Section 1, which bears, N 00°09'44" W, 551.08 feet, from a 1/2" rebar, found for the Southwest corner of Section 1.

Said strip of land contains 0.125 acres, more or less, and is allocated by forties as follows:

SCALE: 1" = 1000'  
0 500' 1000'

SW 1/4 SW 1/4 16.540 Rods 0.125 Acres

BEARINGS ARE GRID NAD 27  
NM EAST  
DISTANCES ARE HORIZ. GROUND.

LEGEND  
( ) RECORD DATA - GLO  
◆ FOUND MONUMENT AS NOTED  
— PROPOSED ACCESS ROAD

I, R. M. Howett, a N. M. Professional Surveyor, hereby certify that I prepared this plat from an actual survey made on the ground under my direct supervision, said survey and plat meet the Min. Stds. for Land Surveying in the State of N. M. and are true and correct to the best of my knowledge and belief.

*Robert M. Howett*  
Robert M. Howett NM PS 19680



Firm No.: TX 10193838 NM 4655451

Copyright 2014 - All Rights Reserved

NO.	REVISION	DATE
JOB NO.:	LS1606223	
DWG. NO.:	2-1606223	

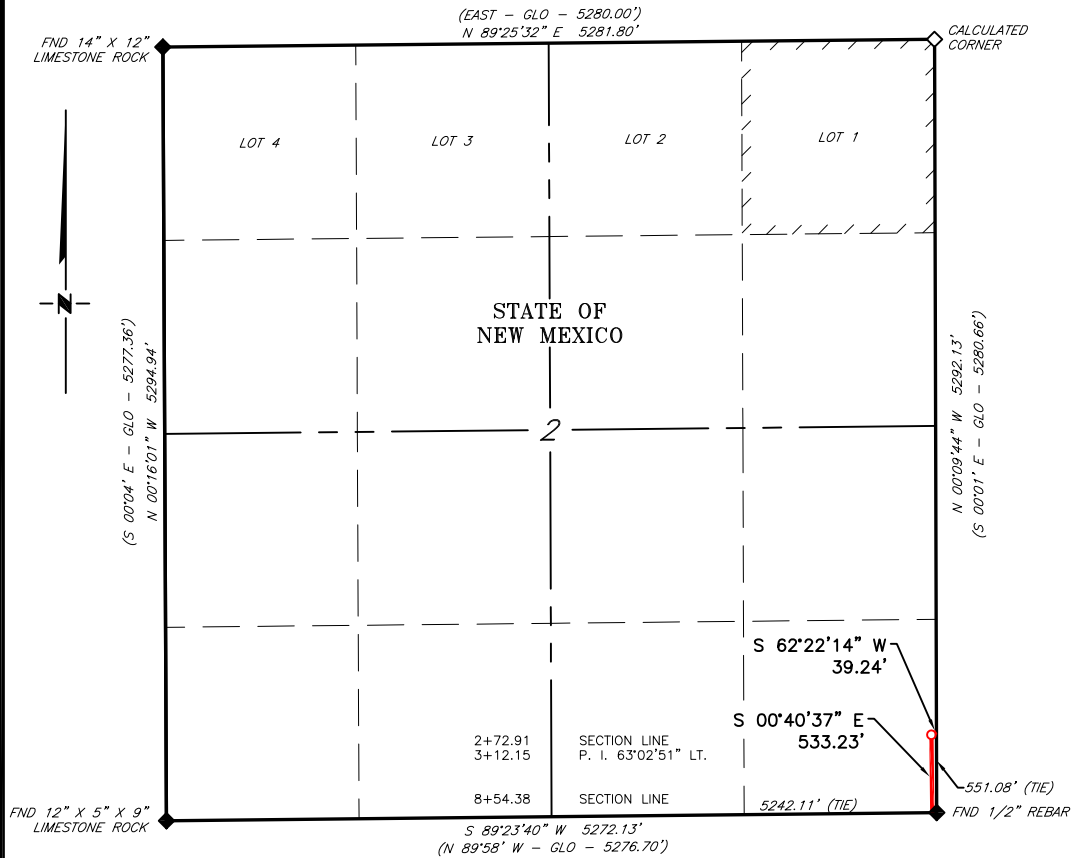
**RRC**

308 W. BROADWAY ST., HOBBS, NM 88240 (575) 964-8200

SCALE: 1" = 1000'
DATE: 6-16-2016
SURVEYED BY: BK/HD
DRAWN BY: CMJ
APPROVED BY: RMH
SHEET : 2 OF 4



**APACHE CORPORATION  
PROPOSED ACCESS ROAD  
FOR THE FIRE EAGLE STATE SAN ANDRES UNIT #2H  
SECTION 2, T10S, R36E  
N. M. P. M., LEA CO., NEW MEXICO**



**DESCRIPTION**

A strip of land 20 feet wide, being 572.47 feet or 34.695 rods in length, lying in Section 2, Township 10 South, Range 36 East, N. M. P. M., Lea County, New Mexico, being 10 feet left and 10 feet right of the following described survey of a centerline across State of New Mexico land:

BEGINNING at Engr. Sta. 2+72.91, a point on the East line of Section 2, which bears, N 00°09'44" W, 551.08 feet, from a 1/2" rebar, found for the Southeast corner of Section 2;

Thence S 62°22'14" W, 39.24 feet, to Engr. Sta. 3+12.15, a P. I. of 63°02'51" left;

Thence S 00°40'37" E, 533.23 feet, to Engr. Sta. 8+45.38, to a point on the South line of Section 2, which bears, N 89°23'40" E, 5,242.11 feet, from a 12"x5"x9" limestone rock, found for the Southwest corner of Section 2.

Said strip of land contains 0.263 acres, more or less, and is allocated by forties as follows:

SE 1/4 SE 1/4      34.695 Rods      0.263 Acres

SCALE: 1" = 1000'

0      500'      1000'

BEARINGS ARE GRID NAD 27  
NM EAST  
DISTANCES ARE HORIZ. GROUND.

LEGEND

( ) RECORD DATA - GLO

FOUND MONUMENT  
AS NOTED

PROPOSED ACCESS  
ROAD

I, R. M. Howett, a N. M. Professional Surveyor, hereby certify that I prepared this plat from an actual survey made on the ground under my direct supervision, said survey and plat meet the Min. Stds. for Land Surveying in the State of N. M. and are true and correct to the best of my knowledge and belief.

*Robert M. Howett*  
Robert M. Howett      NM PS 19680



Firm No.: TX 10193838 NM 4655451

Copyright 2014 - All Rights Reserved

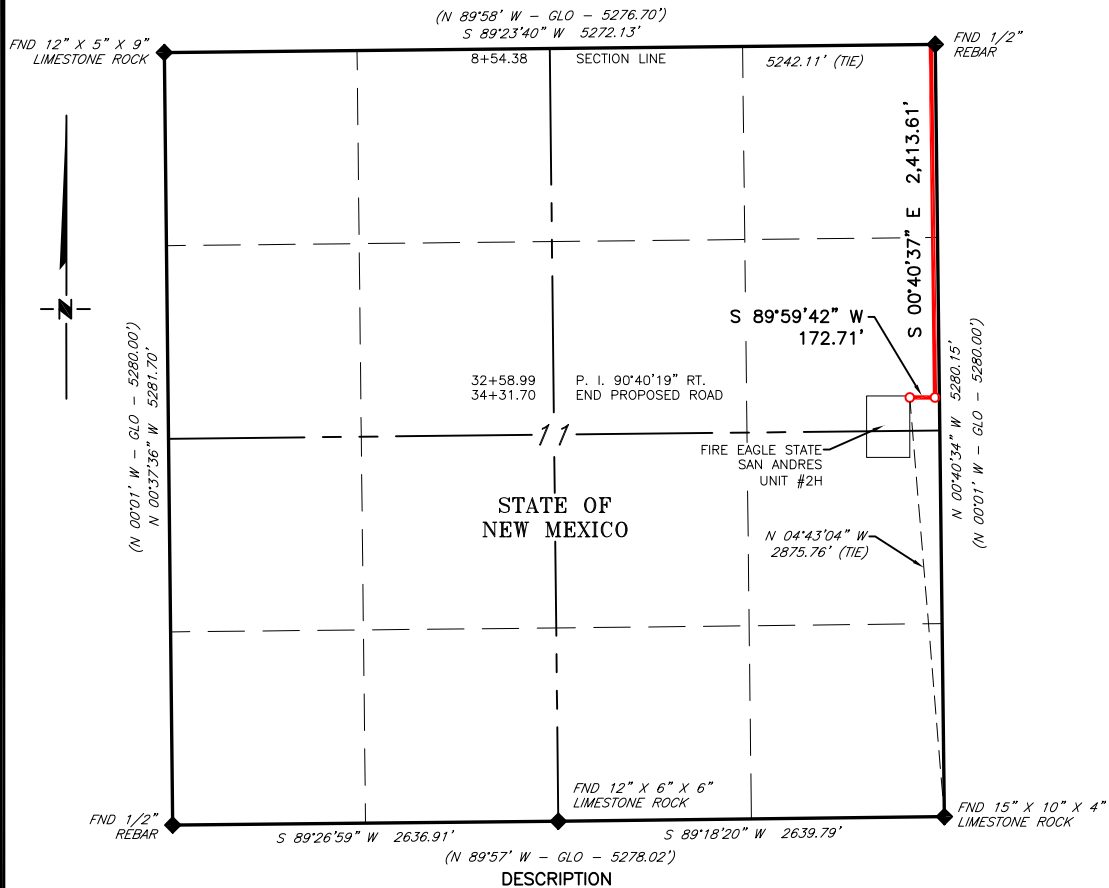
NO.	REVISION	DATE
JOB NO.:	LS1606223	
DWG. NO.:	3-1606223	

**RRC**

308 W. BROADWAY ST., HOBBS, NM 88240 (575) 964-8200

SCALE: 1" = 1000'
DATE: 6-16-2016
SURVEYED BY: BK/HD
DRAWN BY: CMJ
APPROVED BY: RMH
SHEET : 3 OF 4

**APACHE CORPORATION  
PROPOSED ACCESS ROAD  
FOR THE FIRE EAGLE STATE SAN ANDRES UNIT #2H  
SECTION 11, T10S, R36E  
N. M. P. M., LEA CO., NEW MEXICO**



**DESCRIPTION**

A strip of land 20 feet wide, being 2,586.32 feet or 156.746 rods in length, lying in Section 11, Township 10 South, Range 36 East, N. M. P. M., Lea County, New Mexico, being 10 feet left and 10 feet right of the following described survey of a centerline across State of New Mexico land:

**BEGINNING** at Engr. Sta. 8+45.38, a point on the North line of Section 11, which bears, N 89°23'40\" E, 5,242.11 feet, from a 12"x5"x9" limestone rock, found for the Northwest corner of Section 11;

Thence S 00°40'37\" E, 2,413.61 feet, to Engr. Sta. 32+58.99, a P. I. of 90°40'19\" right;

Thence S 89°59'42\" W, 172.71 feet, to Engr. Sta. 34+31.70, the End of Survey, a point in the Northeast quarter of Section 11, which bears, N 04°43'04\" W, 2,875.76 feet, from a 15"x10"x4\" limestone rock, found for the Southeast corner of Section 11.

Said strip of land contains 1.187 acres, more or less, and is allocated by forties as follows:

<b>SCALE:</b> 1" = 1000'	NE 1/4 NE 1/4	80.002 Rods	0.606 Acres
	SE 1/4 NE 1/4	76.744 Rods	0.581 Acres

BEARINGS ARE GRID NAD 27  
NM EAST  
DISTANCES ARE HORIZ. GROUND.

**LEGEND**  
( ) RECORD DATA - GLO  
◆ FOUND MONUMENT AS NOTED  
— PROPOSED ACCESS ROAD

I, R. M. Howett, a N. M. Professional Surveyor, hereby certify that I prepared this plat from an actual survey made on the ground under my direct supervision, said survey and plat meet the Min. Stds. for Land Surveying in the State of N. M. and are true and correct to the best of my knowledge and belief.

*Robert M. Howett*  
Robert M. Howett NM PS 19680



Firm No.: TX 10193838 NM 4655451

Copyright 2014 - All Rights Reserved

NO.	REVISION	DATE
JOB NO.:	LS1606223	
DWG. NO.:	4-1606223	



308 W. BROADWAY ST., HOBBS, NM 88240 (575) 964-8200

SCALE:	1" = 1000'
DATE:	6-16-2016
SURVEYED BY:	BK/HD
DRAWN BY:	CMJ
APPROVED BY:	RMH
SHEET :	4 OF 4