

State of New Mexico  
Energy, Minerals & Natural Resources Department  
OIL CONSERVATION DIVISION  
1220 South St. Francis Dr.  
Santa Fe, NM 87505

☐ AMENDED REPORT

|                                  |  |                                 |  |                                   |
|----------------------------------|--|---------------------------------|--|-----------------------------------|
| <sup>1</sup> API Number          |  | <sup>2</sup> Pool Code<br>98187 | <sup>3</sup> Pool Name<br>WC-025 G-09 S253502D; UPR WOLFCAMP |                                   |
| <sup>4</sup> Property Code       | <sup>5</sup> Property Name<br>BLUE BAY WCA STATE COM           |                                 |  | <sup>6</sup> Well Number<br>1H    |
| <sup>7</sup> OGRID No.<br>372031 | <sup>8</sup> Operator Name<br>OneEnergy Partners Operating LLC |                                 |  | <sup>9</sup> Elevation<br>3348.4' |

|                    |               |                 |              |         |                       |                           |                       |                        |               |
|--------------------|---------------|-----------------|--------------|---------|-----------------------|---------------------------|-----------------------|------------------------|---------------|
| UL or lot no.<br>J | Section<br>36 | Township<br>24S | Range<br>35E | Lot Idn | Feet from the<br>2640 | North/South line<br>SOUTH | Feet from the<br>1395 | East/West line<br>EAST | County<br>LEA |
|--------------------|---------------|-----------------|--------------|---------|-----------------------|---------------------------|-----------------------|------------------------|---------------|

|                                      |              |                               |              |                                  |                      |                           |                       |                        |               |
|--------------------------------------|--------------|-------------------------------|--------------|----------------------------------|----------------------|---------------------------|-----------------------|------------------------|---------------|
| UL or lot no.<br>O                   | Section<br>1 | Township<br>25S               | Range<br>35E | Lot Idn                          | Feet from the<br>380 | North/South line<br>SOUTH | Feet from the<br>1700 | East/West line<br>EAST | County<br>LEA |
| <sup>12</sup> Dedicated Acres<br>480 |              | <sup>13</sup> Joint or Infill |              | <sup>14</sup> Consolidation Code |                      | <sup>15</sup> Order No.   |                       |                        |               |

16

NE Cor. Sec. 25

2000' 1000' 0' 2000'

SCALE

DRAWN BY: R.T. 10-30-17

● = SURFACE HOLE LOCATION  
○ = BOTTOM HOLE LOCATION  
▲ = SECTION CORNER LOCATED  
△ = SECTION CORNER RE-ESTABLISHED.  
(Not Set on Ground.)

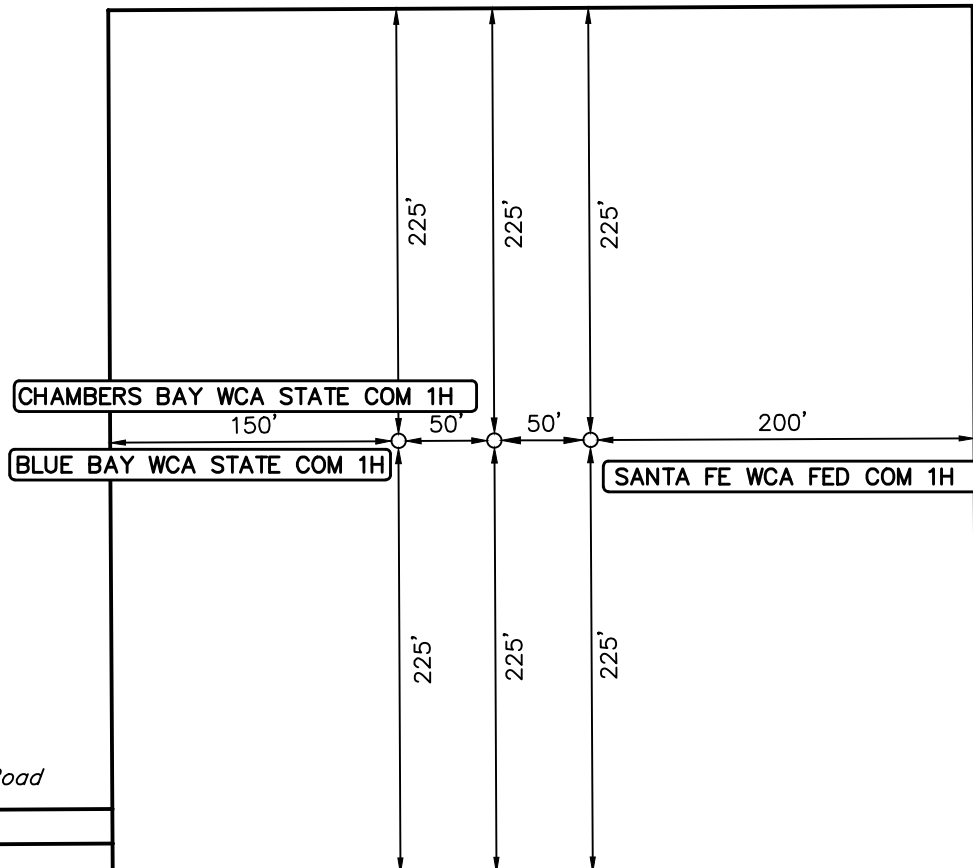
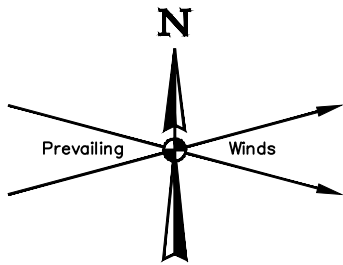
NOTE:  
• Distances referenced on plat to section lines are perpendicular.  
• Basis of Bearing is a Transverse Mercator Projection with a Central Meridian of W103°53'00"

NAD 83 (SURFACE HOLE LOCATION)  
LATITUDE = 32°10'26.30" (32.173973°)  
LONGITUDE = 103°19'02.04" (103.317232°)  
NAD 27 (SURFACE HOLE LOCATION)  
LATITUDE = 32°10'25.85" (32.173846°)  
LONGITUDE = 103°19'00.36" (103.316767°)  
STATE PLANE NAD 83 (N.M. EAST)  
N: 428510.65' E: 855727.75'  
STATE PLANE NAD 27 (N.M. EAST)  
N: 428451.76' E: 814541.38'

NAD 83 (BOTTOM HOLE LOCATION)  
LATITUDE = 32°09'11.60" (32.153221°)  
LONGITUDE = 103°19'05.57" (103.318215°)  
NAD 27 (BOTTOM HOLE LOCATION)  
LATITUDE = 32°09'11.14" (32.153094°)  
LONGITUDE = 103°19'03.90" (103.317751°)  
STATE PLANE NAD 83 (N.M. EAST)  
N: 420958.25' E: 855494.86'  
STATE PLANE NAD 27 (N.M. EAST)  
N: 420899.57' E: 814308.20'

jliery@oneenergypartners.com  
E-mail Address

Certificate Number:



REV: 1 10-30-17 R.T. (ADD WELL)

**NOTES:**

**OneEnergy Partners Operating LLC**

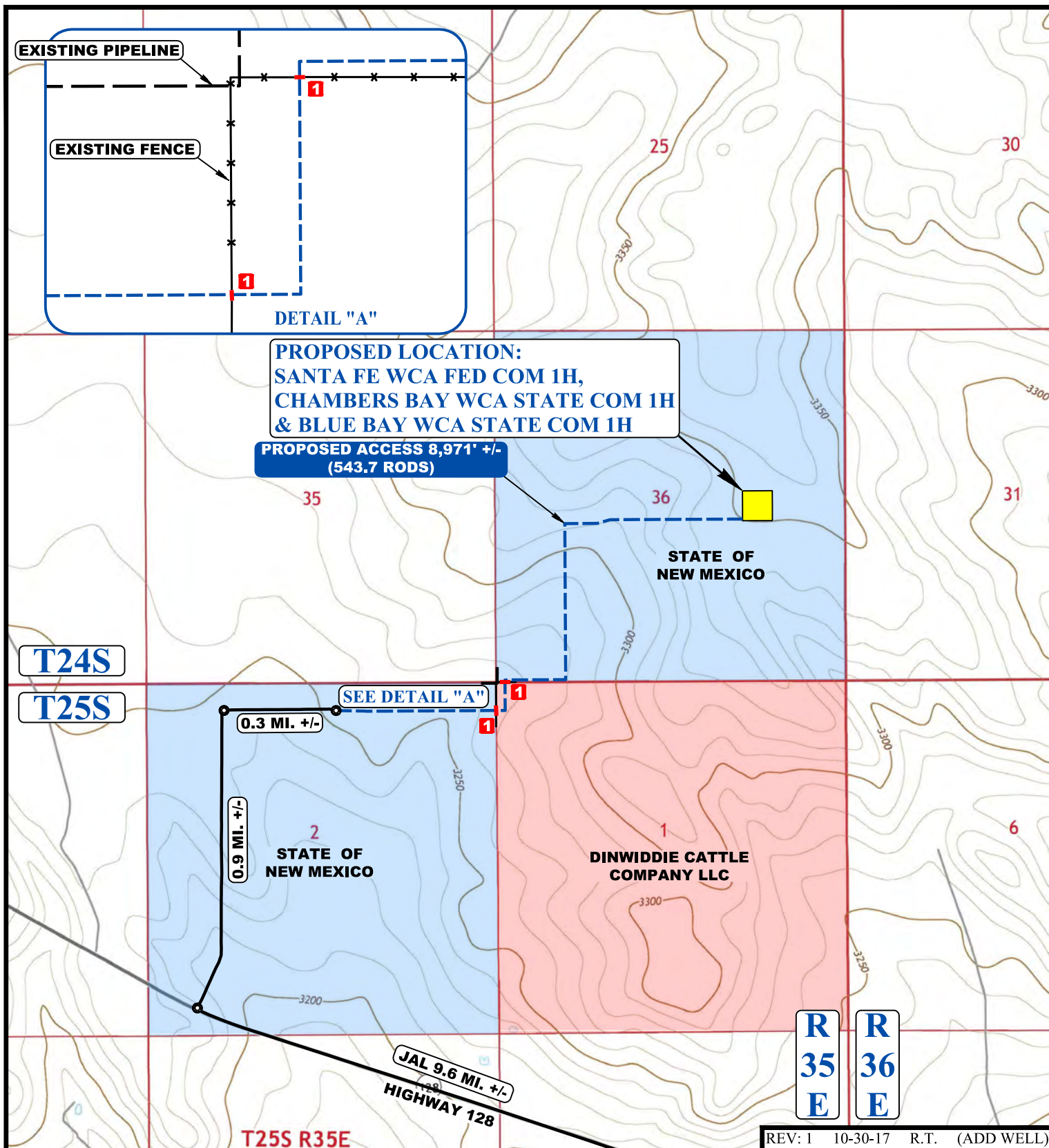
SANTA FE WCA FED COM 1H,  
CHAMBERS BAY WCA STATE COM 1H  
& BLUE BAY WCA STATE COM 1H  
N 1/2 SE 1/4, SECTION 36, T24S, R35E, N.M.P.M.  
LEA COUNTY, NEW MEXICO

|             |            |          |           |
|-------------|------------|----------|-----------|
| SURVEYED BY | A.H., A.G. | 10-25-17 | SCALE     |
| DRAWN BY    | V.LD.      | 07-19-17 | 1" = 100' |

**SITE PLAN**



**UELS, LLC**  
Corporate Office \* 85 South 200 East  
Vernal, UT 84078 \* (435) 789-1017



NOTE: PARCEL DATA SHOWN HAS BEEN OBTAINED FROM VARIOUS SOURCES AND SHOULD BE USED FOR MAPPING, GRAPHIC AND PLANNING PURPOSES ONLY. NO WARRANTY IS MADE BY UINTAH ENGINEERING AND LAND SURVEYING (UELS) FOR ACCURACY OF THE PARCEL DATA.

#### LEGEND:

- EXISTING ROAD
- PROPOSED ROAD
- x x EXISTING FENCE
- EXISTING PIPELINE
- INSTALL CATTLE GUARD



**UELS, LLC**  
Corporate Office \* 85 South 200 East  
Vernal, UT 84078 \* (435) 789-1017

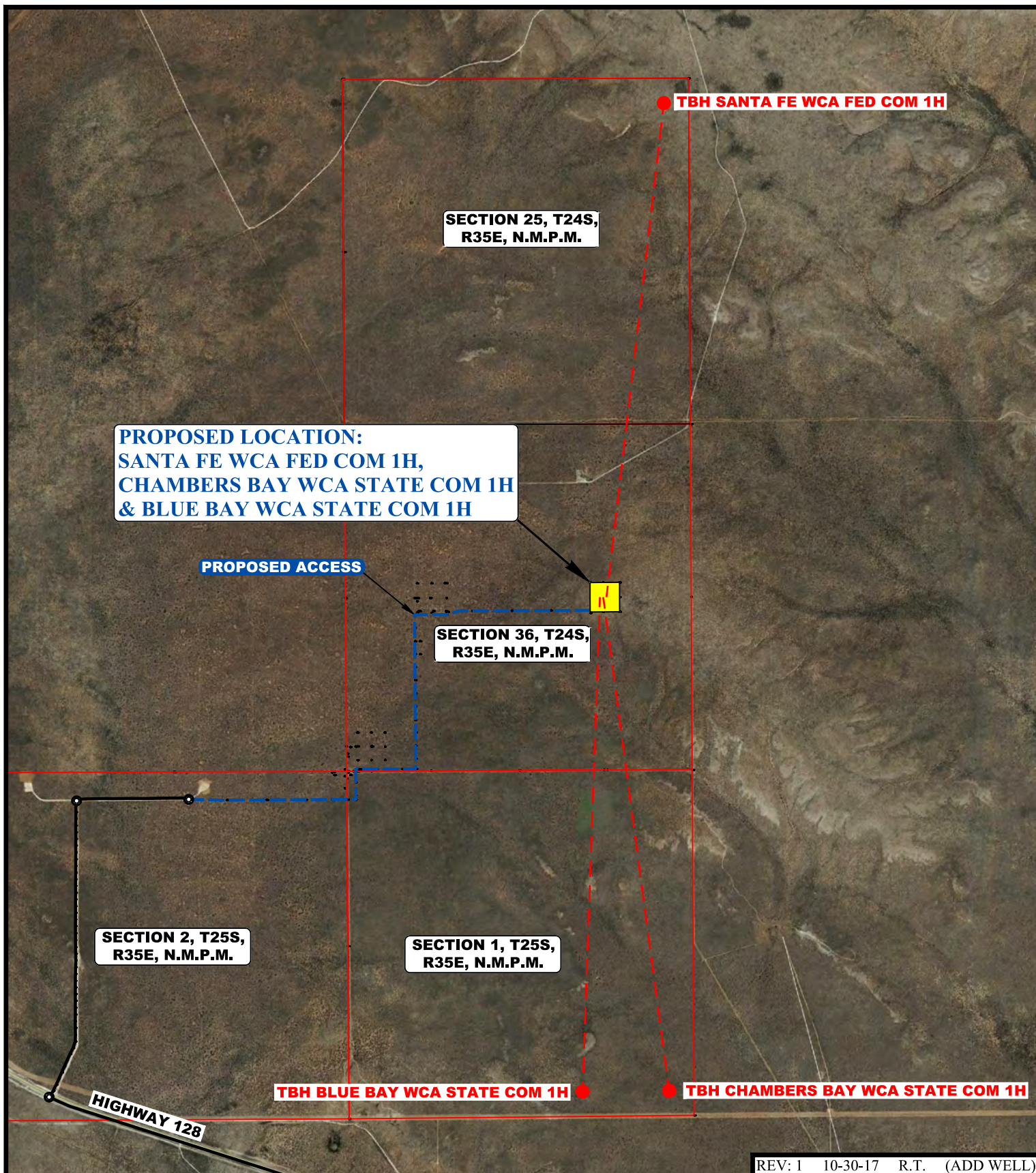


#### OneEnergy Partners Operating LLC

SANTA FE WCA FED COM 1H,  
CHAMBERS BAY WCA STATE COM 1H  
& BLUE BAY WCA STATE COM 1H  
N 1/2 SE 1/4, SECTION 36, T24S, R35E, N.M.P.M.  
LEA COUNTY, NEW MEXICO

|                        |            |          |               |
|------------------------|------------|----------|---------------|
| SURVEYED BY            | A.H., A.G. | 10-25-17 | SCALE         |
| DRAWN BY               | R.T.       | 07-14-17 | 1 : 24,000    |
| <b>ACCESS ROAD MAP</b> |            |          | <b>TOPO B</b> |





**LEGEND:**



**UELS, LLC**  
Corporate Office \* 85 South 200 East  
Vernal, UT 84078 \* (435) 789-1017

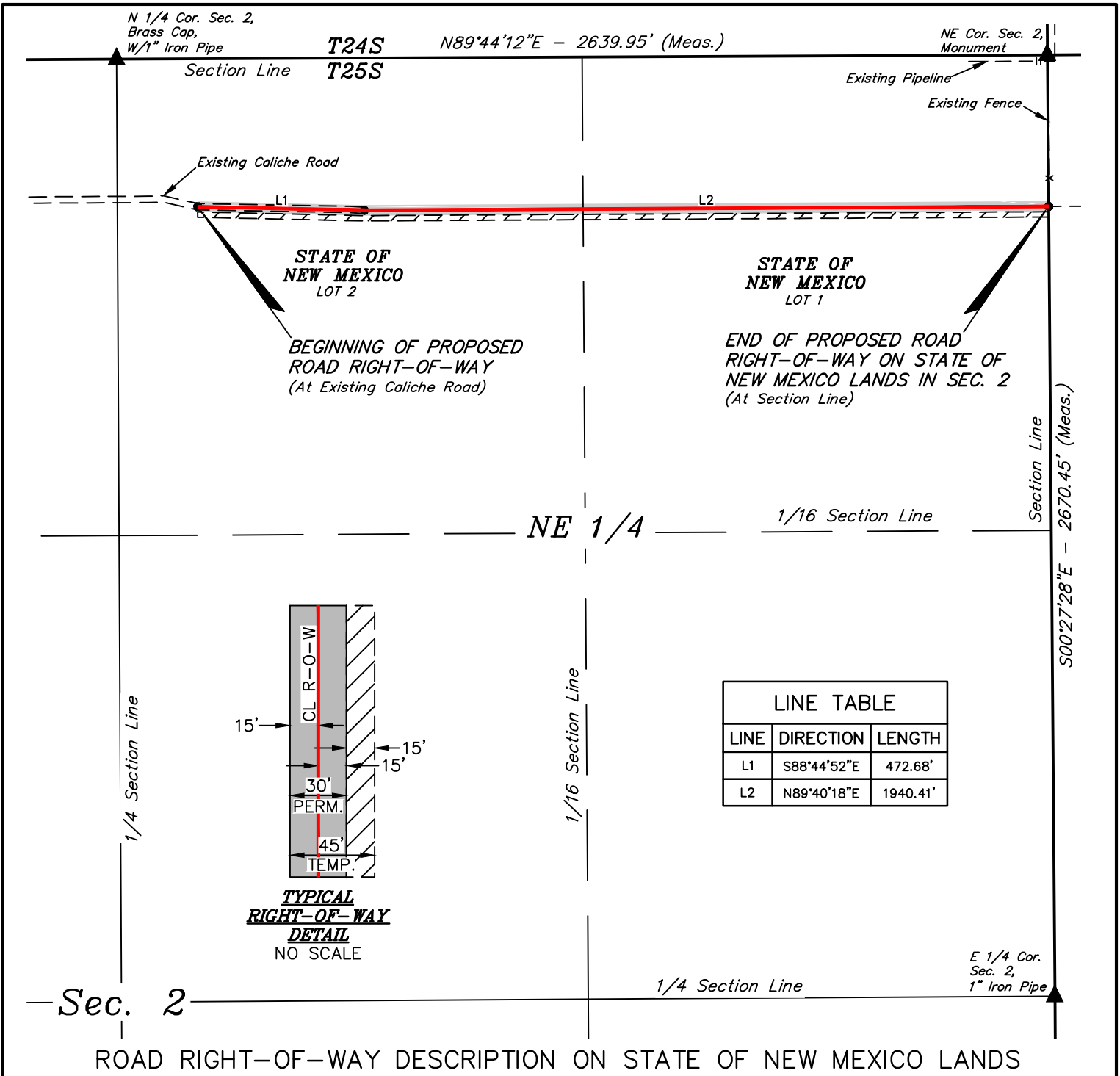


**OneEnergy Partners Operating LLC**

**SANTA FE WCA FED COM 1H,  
CHAMBERS BAY WCA STATE COM 1H  
& BLUE BAY WCA STATE COM 1H  
N 1/2 SE 1/4, SECTION 36, T24S, R35E, N.M.P.M.  
LEA COUNTY, NEW MEXICO**

|                   |            |          |               |
|-------------------|------------|----------|---------------|
| SURVEYED BY       | A.H., A.G. | 10-25-17 | SCALE         |
| DRAWN BY          | R.T.       | 07-14-17 | 1 : 24,000    |
| <b>AERIAL MAP</b> |            |          | <b>TOPO 1</b> |





ROAD RIGHT-OF-WAY DESCRIPTION ON STATE OF NEW MEXICO LANDS

A 30' WIDE PERMANENT RIGHT-OF-WAY 15' ON EACH SIDE OF THE FOLLOWING DESCRIBED CENTERLINE. WITH A 15' WIDE TEMPORARY RIGHT-OF-WAY ON THE RIGHT SIDE OF SAID PERMANENT RIGHT-OF-WAY.

BEGINNING AT A POINT IN LOT 2 OF SECTION 2, T25S, R35E, N.M.P.M., WHICH BEARS S28°50'26"E 477.68' FROM THE NORTH 1/4 CORNER OF SAID SECTION 2, THENCE S88°44'52"E 472.68'; THENCE N89°40'18"E 1940.41' TO A POINT ON THE EAST LINE OF LOT 1 OF SAID SECTION 2, WHICH BEARS S00°27'28"E 429.79' FROM THE NORTHEAST CORNER OF SAID SECTION 2. THE SIDE LINES OF SAID DESCRIBED RIGHT-OF-WAY BEING SHORTENED OR ELONGATED TO MEET THE GRANTOR'S PROPERTY LINES. BASIS OF BEARINGS IS A TRANSVERSE MERCATOR PROJECTION WITH A CENTRAL MERIDIAN OF W103°53'00". PERMANENT RIGHT-OF-WAY CONTAINS 1.662 ACRES MORE OR LESS. TEMPORARY RIGHT-OF-WAY CONTAINS 0.831 ACRES MORE OR LESS.

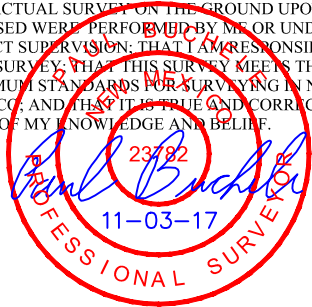
BEGINNING OF ROAD BEARS S28°50'26"E 477.68' FROM THE NORTH 1/4 CORNER OF SECTION 2, T25S, R35E, N.M.P.M.

END OF ROAD ON STATE OF NEW MEXICO LANDS IN SECTION 2 BEARS S00°27'28"E 429.79' FROM THE NORTHEAST CORNER OF SECTION 2, T25S, R35E, N.M.P.M.



| ACREAGE / LENGTH TABLE |                     |         |        |             |             |
|------------------------|---------------------|---------|--------|-------------|-------------|
|                        | OWNERSHIP           | FEET    | RODS   | PERM. ACRES | TEMP. ACRES |
| SEC. 4 (LOT 2)         | STATE OF NEW MEXICO | 1092.54 | 66.21  | 0.752       | 0.376       |
| SEC. 4 (LOT 1)         | STATE OF NEW MEXICO | 1320.55 | 80.03  | 0.909       | 0.455       |
| TOTAL                  |                     | 2413.09 | 146.25 | 1.662       | 0.831       |

CERTIFICATE  
THIS IS TO CERTIFY THAT THIS EASEMENT PLAT AND THE ACTUAL SURVEY ON THE GROUND UPON WHICH IT IS BASED WERE PERFORMED BY ME OR UNDER MY DIRECT SUPERVISION; THAT I AM RESPONSIBLE FOR THIS SURVEY; THAT THIS SURVEY MEETS THE MINIMUM STANDARDS FOR SURVEYING IN NEW MEXICO; AND THAT IT IS TRUE AND CORRECT TO THE BEST OF MY KNOWLEDGE AND BELIEF.



▲ = SECTION CORNERS LOCATED.

FILE: 62156-A

REV: 1 11-03-17 R.T. (UPDATE NAME)

- NOTES:
- The maximum grade of existing ground for the proposed access road is ±24.73%.
  - Basis of Bearings is a Transverse Mercator Projection with a Central Meridian of W103°53'00"



OneEnergy Partners Operating LLC

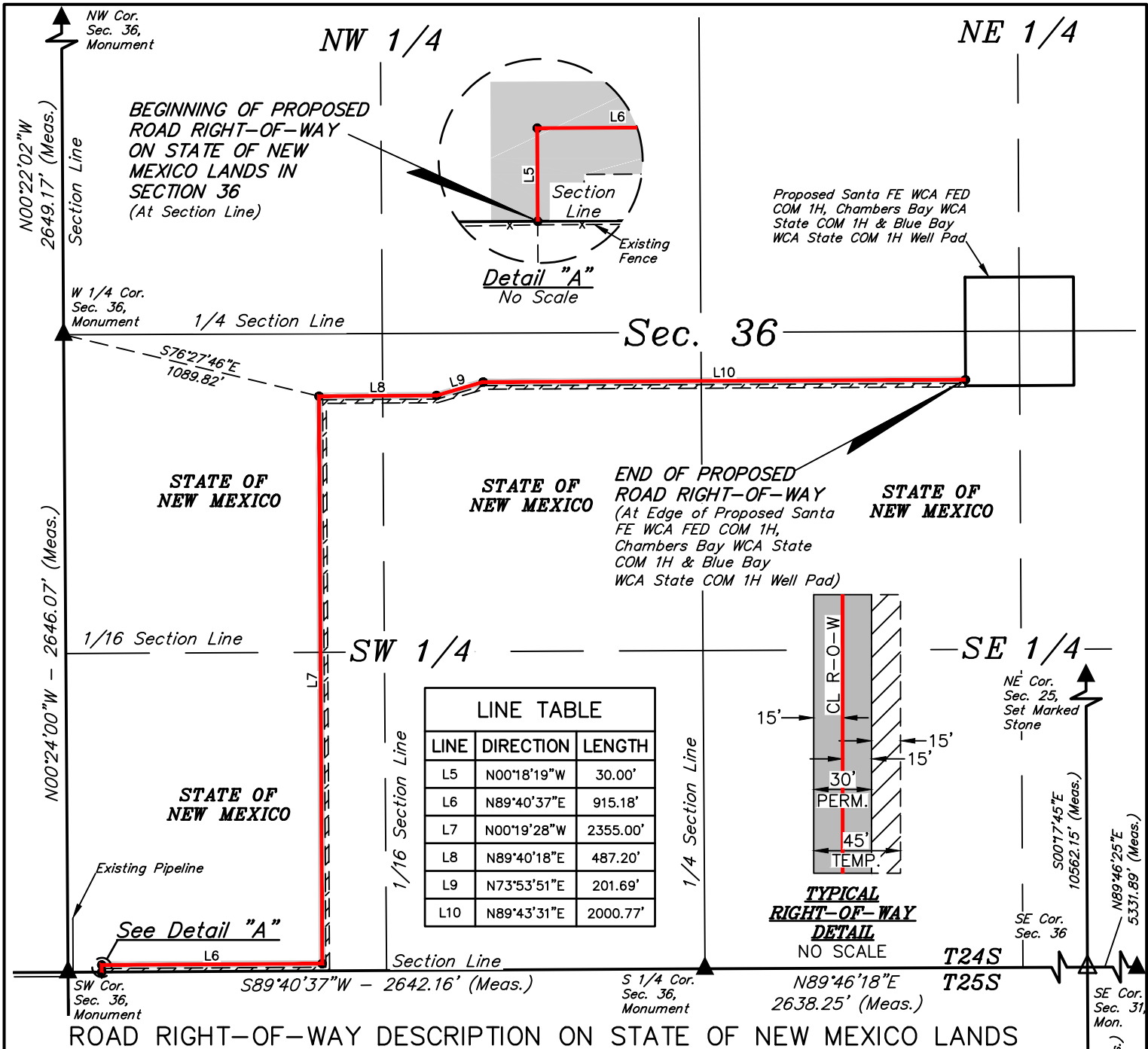
SANTA FE WCA FED COM 1H,  
CHAMBERS BAY WCA STATE COM 1H  
& BLUE BAY WCA STATE COM 1H  
N 1/2 SE 1/4, SECTION 36, T24S, R35E, N.M.P.M.  
LEA COUNTY, NEW MEXICO

|             |            |          |           |
|-------------|------------|----------|-----------|
| SURVEYED BY | G.M., R.S. | 07-12-17 | SCALE     |
| DRAWN BY    | B.D.H.     | 09-25-17 | 1" = 400' |

ACCESS ROAD R-O-W



UELS, LLC  
Corporate Office \* 85 South 200 East  
Vernal, UT 84078 \* (435) 789-1017



A 30' WIDE PERMANENT RIGHT-OF-WAY 15' ON EACH SIDE OF THE FOLLOWING DESCRIBED CENTERLINE. WITH A 15' WIDE TEMPORARY RIGHT-OF-WAY ON THE RIGHT SIDE OF SAID PERMANENT RIGHT-OF-WAY.

BEGINNING AT A POINT ON THE SOUTH LINE OF THE SW 1/4 SW 1/4 OF SECTION 36, T24S, R35E, N.M.P.M., WHICH BEARS N89°40'37"E 139.40' FROM THE SOUTHWEST CORNER OF SAID SECTION 36, THENCE N00°18'19"W 30.00'; THENCE N89°40'37"E 915.18'; THENCE N00°19'28"W 2355.00'; THENCE N89°40'18"E 487.20'; THENCE N73°53'51"E 201.69'; THENCE N89°43'31"E 2000.77' TO A POINT IN THE NW 1/4 SE 1/4 OF SAID SECTION 36, WHICH BEARS N23°51'03"E 2672.56' FROM THE SOUTH 1/4 CORNER OF SAID SECTION 36. THE SIDE LINES OF SAID DESCRIBED RIGHT-OF-WAY BEING SHORTENED OR ELONGATED TO MEET THE GRANTOR'S PROPERTY LINES. BASIS OF BEARINGS IS A TRANSVERSE MERCATOR PROJECTION WITH A CENTRAL MERIDIAN OF W103°53'00". PERMANENT RIGHT-OF-WAY CONTAINS 4.125 ACRES MORE OR LESS. TEMPORARY RIGHT-OF-WAY CONTAINS 2.063 ACRES MORE OR LESS.

BEGINNING OF ROAD ON STATE OF NEW MEXICO LANDS IN SECTION 36 BEARS N89°40'37"E 139.40' FROM THE SOUTHWEST CORNER OF SECTION 36, T24S, R35E, N.M.P.M.

END OF ROAD BEARS N23°51'03"E 2672.56' FROM THE SOUTH 1/4 CORNER OF SECTION 36, T24S, R35E, N.M.P.M.

| ACREAGE / LENGTH TABLE  |                     |         |        |             |             |
|-------------------------|---------------------|---------|--------|-------------|-------------|
|                         | OWNERSHIP           | FEET    | RODS   | PERM. ACRES | TEMP. ACRES |
| SEC. 36 (SW 1/4 SW 1/4) | STATE OF NEW MEXICO | 2237.22 | 135.59 | 1.541       | 0.770       |
| SEC. 36 (NW 1/4 SW 1/4) | STATE OF NEW MEXICO | 1327.11 | 80.43  | 0.914       | 0.457       |
| SEC. 36 (NE 1/4 SW 1/4) | STATE OF NEW MEXICO | 1329.46 | 80.57  | 0.916       | 0.458       |
| SEC. 36 (NW 1/4 SE 1/4) | STATE OF NEW MEXICO | 1096.04 | 66.43  | 0.755       | 0.377       |
| TOTAL                   |                     | 5989.83 | 363.02 | 4.125       | 2.063       |

▲ = SECTION CORNERS LOCATED.  
△ = SECTION CORNERS RE-ESTABLISHED.  
(Not Set on Ground.)

NOTES:  
• The maximum grade of existing ground for the proposed access road is ±24.7%.  
• Basis of Bearings is a Transverse Mercator Projection with a Central Meridian of W103°53'00"



UELS, LLC  
Corporate Office \* 85 South 200 East  
Vernal, UT 84078 \* (435) 789-1017



FILE: 62156-B

REV: 1 11-03-17 R.T. (UPDATE NAME)

OneEnergy Partners Operating LLC

SANTA FE WCA FED COM 1H,  
CHAMBERS BAY WCA STATE COM 1H  
& BLUE BAY WCA STATE COM 1H  
N 1/2 SE 1/4, SECTION 36, T24S, R35E, N.M.P.M.  
LEA COUNTY, NEW MEXICO

|             |            |          |           |
|-------------|------------|----------|-----------|
| SURVEYED BY | G.M., R.S. | 07-12-17 | SCALE     |
| DRAWN BY    | B.D.H.     | 09-25-17 | 1" = 600' |

ACCESS ROAD R-O-W