

District I
1625 N. French Dr., Hobbs, NM 88240
Phone: (575) 393-6161 Fax: (575) 393-0720
District II
811 S. First St., Artesia, NM 88210
Phone: (575) 748-1283 Fax: (575) 748-9720
District III
1000 Rio Brazos Road, Aztec, NM 87410
Phone: (505) 334-6178 Fax: (505) 334-6170
District IV
1220 S. St. Francis Dr., Santa Fe, NM 87505
Phone: (505) 476-3460 Fax: (505) 476-3462

State of New Mexico
Energy, Minerals & Natural Resources Department
OIL CONSERVATION DIVISION
1220 South St. Francis Dr.
Santa Fe, NM 87505

Form C-102
Revised August 1, 2011
Submit one copy to appropriate
District Office

☐ AMENDED REPORT

WELL LOCATION AND ACREAGE DEDICATION PLAT

¹ API Number	² Pool Code 98116	³ Pool Name WC-025 G-09 S253402N; Wolfcamp
⁴ Property Code	⁵ Property Name BEAVER CREEK WXY STATE COM	⁶ Well Number 1H
⁷ OGRID No. 372031	⁸ Operator Name OneEnergy Partners Operating LLC	⁹ Elevation 3525.4'

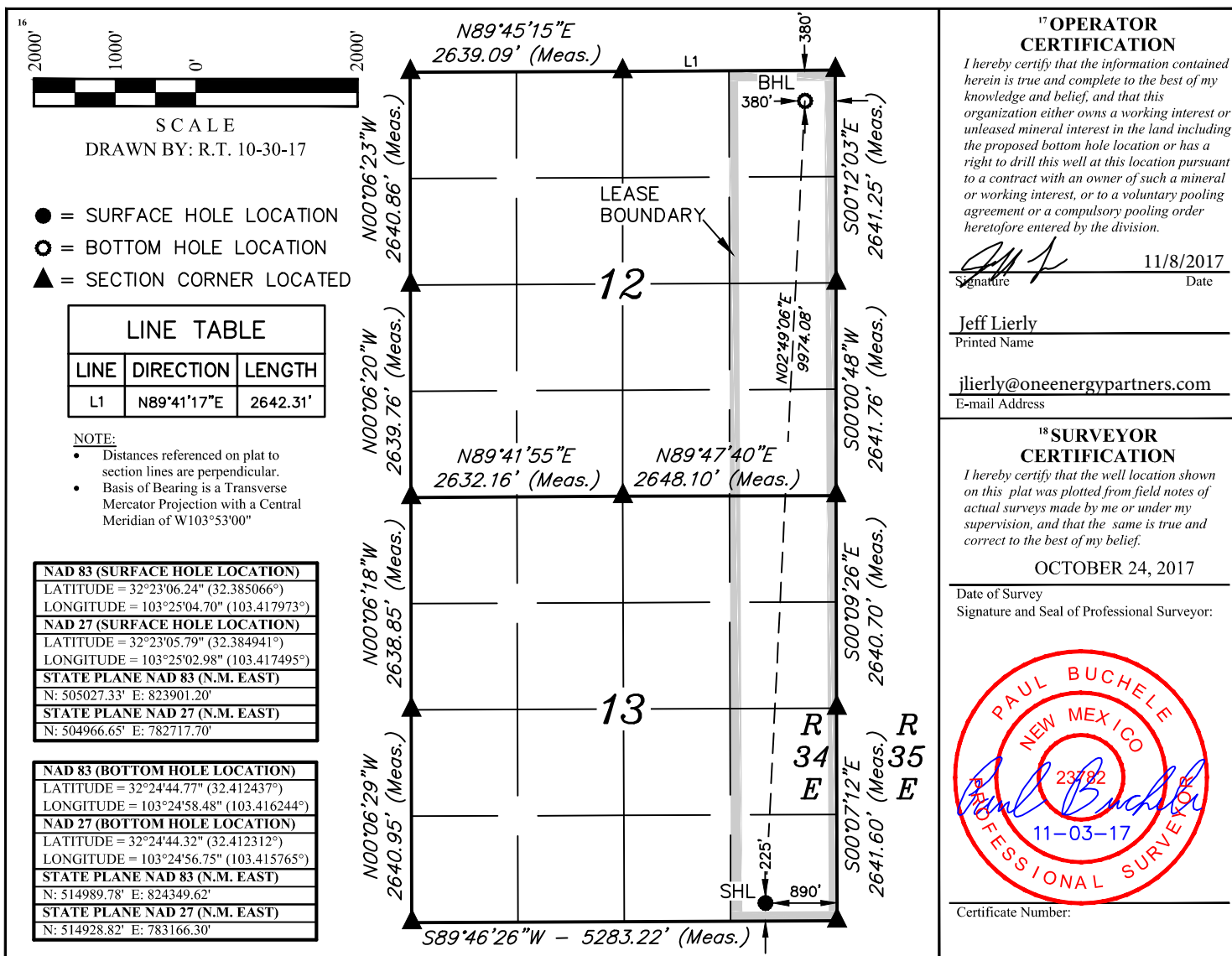
¹⁰ Surface Location

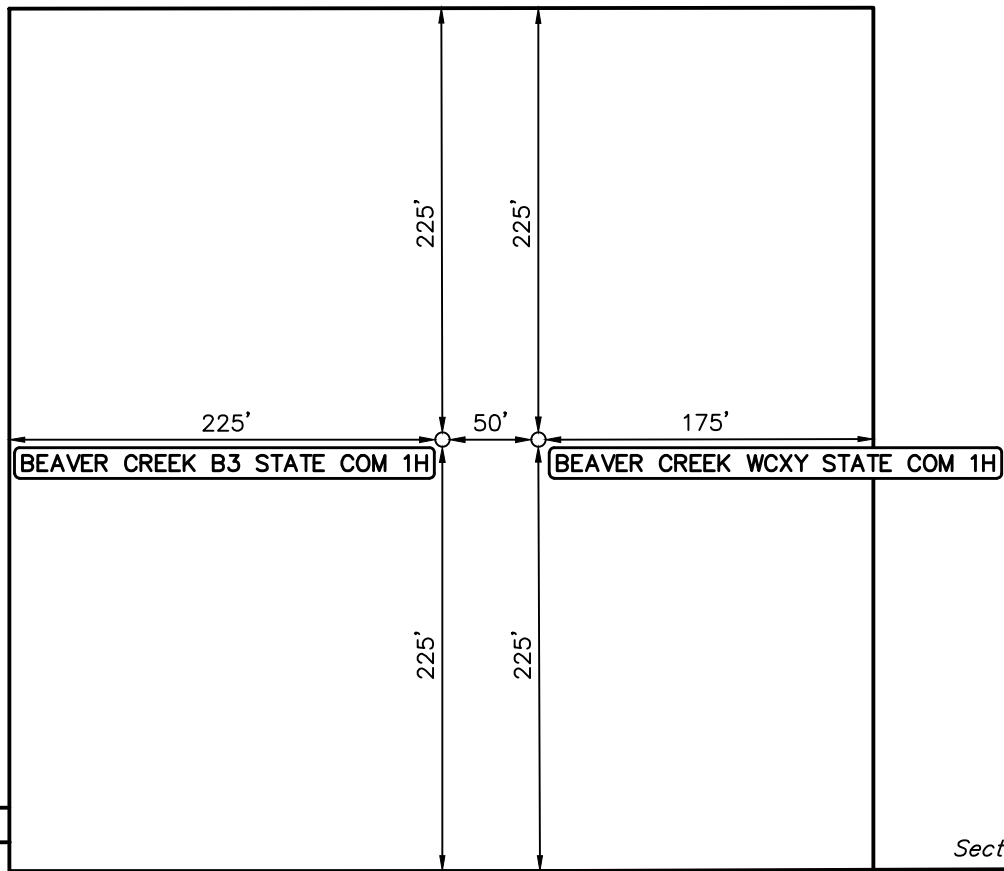
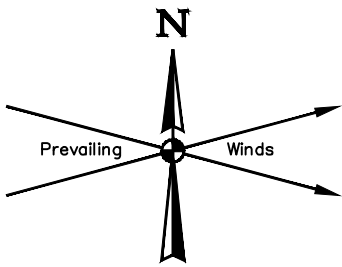
UL or lot no.	Section	Township	Range	Lot Idn	Feet from the	North/South line	Feet from the	East/West line	County
P	13	22S	34E		225	SOUTH	890	EAST	LEA

¹¹ Bottom Hole Location If Different From Surface

UL or lot no.	Section	Township	Range	Lot Idn	Feet from the	North/South line	Feet from the	East/West line	County
A	12	22S	34E		380	NORTH	380	EAST	LEA
¹² Dedicated Acres 320	¹³ Joint or Infill	¹⁴ Consolidation Code	¹⁵ Order No.						

No allowable will be assigned to this completion until all interests have been consolidated or a non-standard unit has been approved by the division.





Section 13

Section 24

REV: 1 10-30-17 R.T. (ADD WELL)

NOTES:

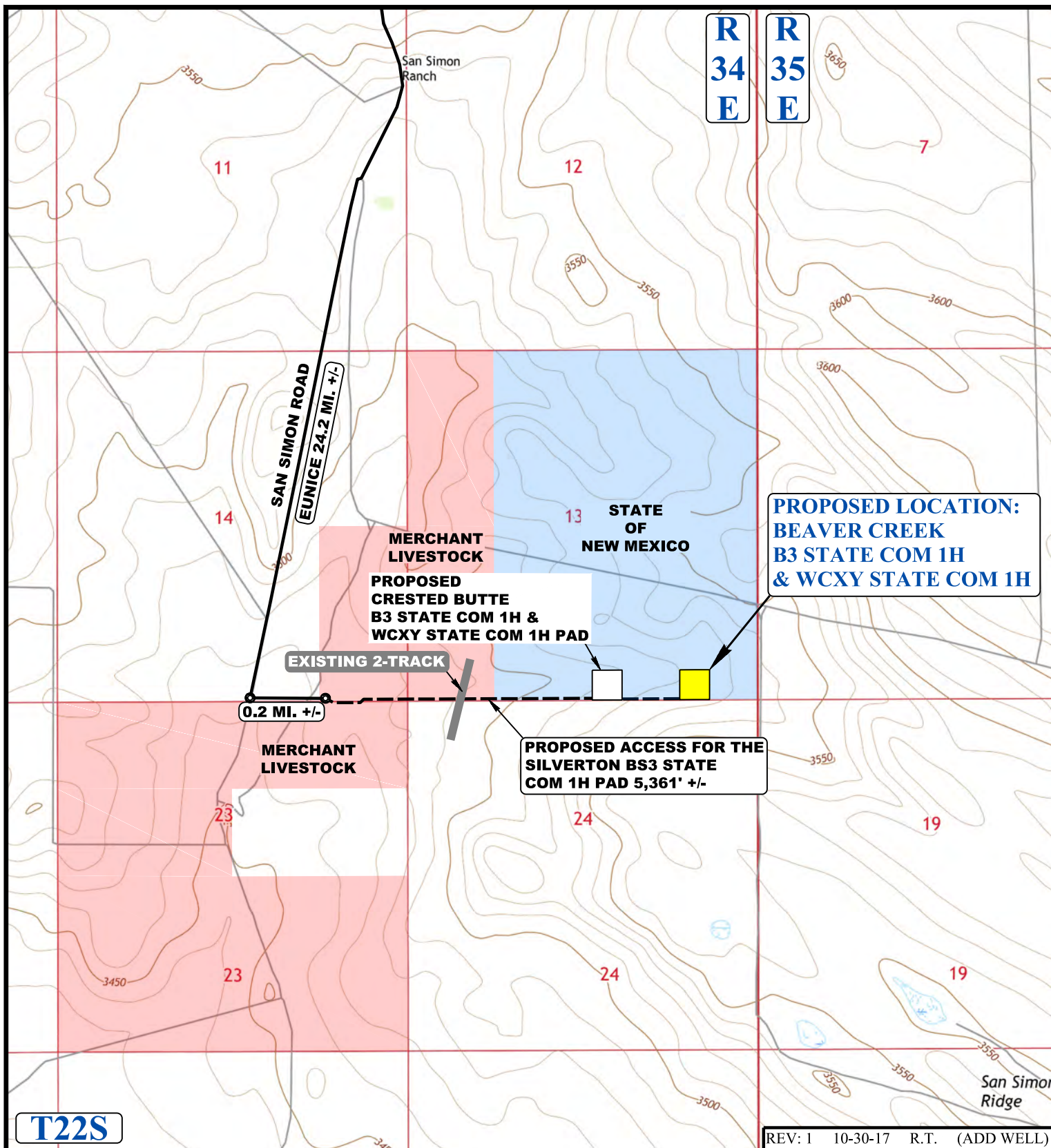
OneEnergy Partners Operating LLC

**BEAVER CREEK B3 STATE COM 1H
& WCXY STATE COM 1H
SE 1/4 SE 1/4, SECTION 13, T22S, R34E, N.M.P.M.
LEA COUNTY, NEW MEXICO**

SURVEYED BY	A.H., A.G.	10-24-17	SCALE
DRAWN BY	R.T.	08-16-17	1" = 100'
SITE PLAN			



UELS, LLC
Corporate Office * 85 South 200 East
Vernal, UT 84078 * (435) 789-1017



T22S

REV: 1 10-30-17 R.T. (ADD WELL)

NOTE: PARCEL DATA SHOWN HAS BEEN OBTAINED FROM VARIOUS SOURCES AND SHOULD BE USED FOR MAPPING, GRAPHIC AND PLANNING PURPOSES ONLY. NO WARRANTY IS MADE BY UINTAH ENGINEERING AND LAND SURVEYING (UELS) FOR ACCURACY OF THE PARCEL DATA.

LEGEND:

- EXISTING ROAD
- EXISTING 2-TRACK
- - - PROPOSED ROAD (SERVICING OTHER WELLS)



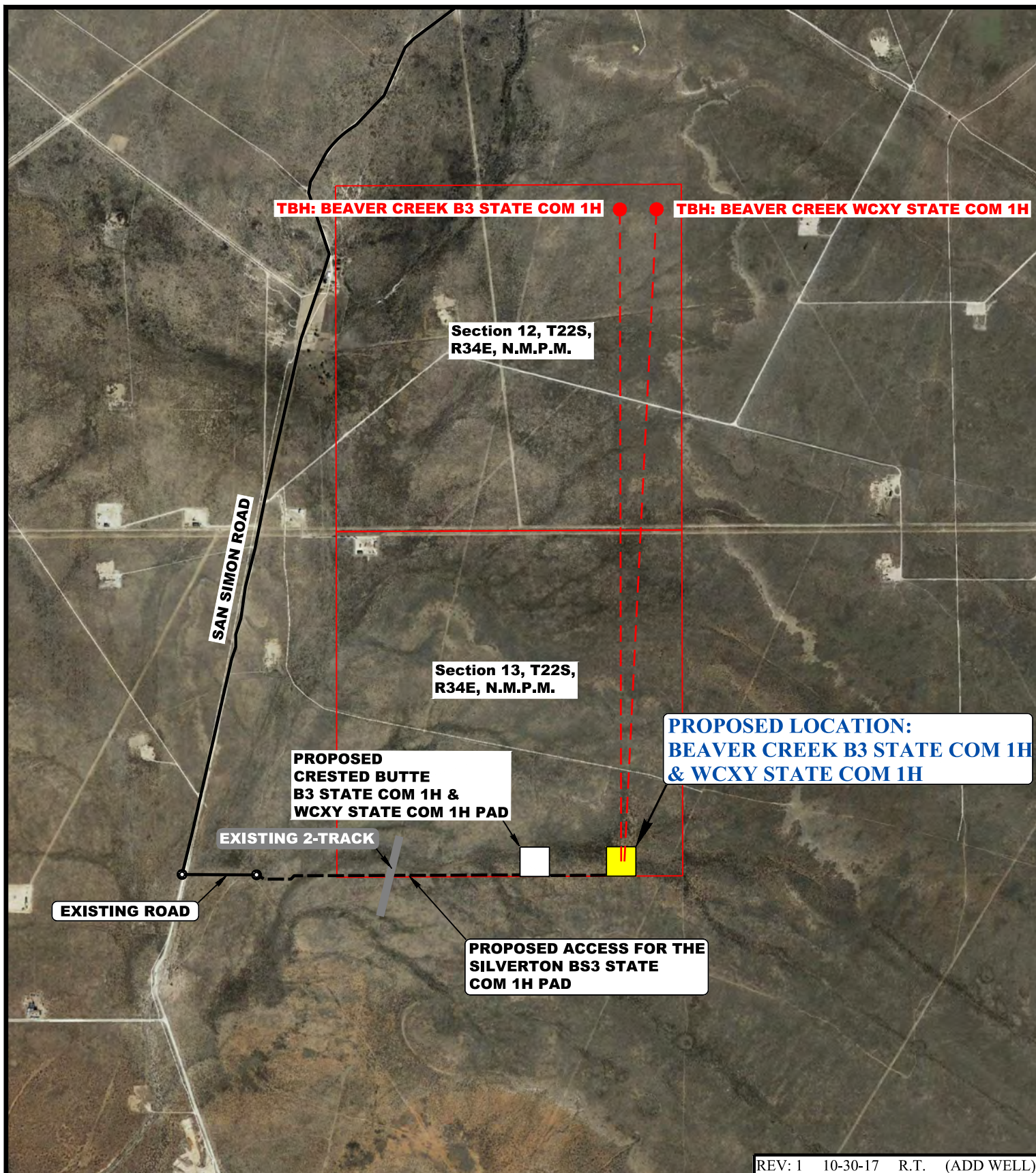
UELS, LLC
Corporate Office * 85 South 200 East
Vernal, UT 84078 * (435) 789-1017



OneEnergy Partners Operating LLC

**BEAVER CREEK B3 STATE COM 1H
& WCXY STATE COM 1H**
SE 1/4 SE 1/4, SECTION 13, T22S, R34E, N.M.P.M.
LEA COUNTY, NEW MEXICO

SURVEYED BY	A.H., A.G.	10-24-17	SCALE
DRAWN BY	R.T.	09-07-17	1 : 24,000
ACCESS ROAD MAP			TOPO B



REV: 1 10-30-17 R.T. (ADD WELL)

LEGEND:

- EXISTING ROAD
- EXISTING 2-TRACK
- PROPOSED ROAD
(SERVICING OTHER WELLS)



UELS, LLC
Corporate Office * 85 South 200 East
Vernal, UT 84078 * (435) 789-1017



OneEnergy Partners Operating LLC

**BEAVER CREEK B3 STATE COM 1H
& WCXY STATE COM 1H**
SE 1/4 SE 1/4, SECTION 13, T22S, R34E, N.M.P.M.
LEA COUNTY, NEW MEXICO

SURVEYED BY	A.H., A.G.	10-24-17	SCALE
DRAWN BY	R.T.	09-07-17	1 : 24,000
AERIAL MAP			TOPO 1