

Submit 3 Copies To Appropriate District  
Office  
District I  
1625 N French Dr., Hobbs, NM 88240  
District II  
1301 W Grand Ave., Artesia, NM 88210  
District III  
1000 Rio Brazos Rd., Aztec, NM 87410  
District IV  
1220 S St Francis Dr., Santa Fe, NM  
87505

State of New Mexico  
Energy, Minerals and Natural Resources  
OIL CONSERVATION DIVISION  
1220 South St. Francis Dr.  
Santa Fe, NM 87505

Form C-103  
March 4, 2004

WELL API NO. 30-025-24047
5. Indicate Type of Lease STATE <input checked="" type="checkbox"/> FEE <input type="checkbox"/>
6. State Oil & Gas Lease No.
7. Lease Name or Unit Agreement Name North Vacuum Abo West Unit
8. Well Number 16
9. OGRID Number 4323
10. Pool name or Wildcat Vacuum Abo, North

SUNDRY NOTICES REPORTS ON WELLS  
(DO NOT USE THIS FORM FOR PROPOSALS TO DRILL OR TO DEEPEN OR PLUG BACK TO A  
DIFFERENT RESERVOIR USE "APPLICATION FOR PERMIT" (FORM C-101) FOR SUCH  
PROPOSALS)

1. Type of Well:  
Oil Well ☐ Gas Well ☒ Other TA'd ☐

2. Name of Operator  
Chevron USA Inc.

3. Address of Operator  
#15 Smith Rd., Midland, TX 79705

4. Well Location  
Unit Letter F : 1980 feet from the North line and 1980 feet from the West line  
Section 28 Township 17-S Range 34-E NMPM Lea County

11. Elevation (Show whether DR, RKB, RT, GR, etc.)

Pit or Below-grade Tank Application (For pit or below-grade tank closures, a form C-144 must be attached)

Pit Location: UL F Sect 28 Twp 17-S Rng 34-E Pit type Steel Depth to Groundwater \_\_\_\_\_ Distance from nearest fresh water well \_\_\_\_\_  
Distance from nearest surface water \_\_\_\_\_ Below-grade Tank Location UL \_\_\_\_\_ Sect \_\_\_\_\_ Twp \_\_\_\_\_ Rng \_\_\_\_\_ ;  
1980 feet from the North line and 1980 feet from the West line (Steel Tank)

12. Check Appropriate Box to Indicate Nature of Notice, Report or Other Data  
NOTICE OF INTENTION TO:

PERFORM REMEDIAL WORK ☐ PLUG AND ABANDON ☒  
TEMPORARILY ABANDON ☐ CHANGE PLANS ☐  
PULL OR ALTER CASING ☐ MULTIPLE COMPLETION ☐  
OTHER ☐

SUBSEQUENT REPORT OF:

REMEDIAL WORK ☐ ALTERING CASING ☐  
CEASE DRILLING OPNS ☐ PLUG AND ABANDONMENT ☐  
OTHER ☐

13. Describe proposed or completed operations. (Clearly state all pertinent details, and estimated date of starting any proposed work). SEE RULE 1103. For Multiple Completions: Attach well log and completion or recompletion.

1. Notify OCD 24 hrs. prior to MI and RU.
2. RIH tag CIBP@8450' and spot 30sx cement plug from 8450'-8250'.
3. Displace hole w/MLF, 9.5# Brine w/25# gel P/BBL.
4. Perf and squeeze 60sxsx cement plug from 6290'-6090' (Glorieta) WOC&TAG.
5. Perf and squeeze 55sxsx cement plug from 2965'-2765' (S.Andres/B.Salt est.) WOC&TAG.

I hereby certify that the information above is true and complete to the best of my knowledge and belief. I further certify that any pit or below-grade tank has been/will be constructed or closed according to NMOCD guidelines ☐, a general permit ☐ or an (attached) alternative OCD-approved plan ☐.

SIGNATURE M. Lee Roark TITLE Agent for Chevron USA, Inc. DATE 8-16-2011  
Type or print name M. Lee Roark E-mail address: \_\_\_\_\_ Telephone No. 432-561-8600

(This space for State use)

APPROVED BY [Signature] TITLE STAFF MGR DATE 8-17-2011  
Conditions of approval, if any: \_\_\_\_\_

AUG 17 2011

WELL API NO.  
30-025-24047

5. Indicate Type of Lease

STATE ☒ FEE ☐

6. State Oil &amp; Gas Lease No.

7. Lease Name or Unit Agreement Name

North Vacuum Abo West Unit

8. Well Number

16

9. OGRID Number

4323

10. Pool name or Wildcat

Vacuum Abo, North

## SUNDRY NOTICES AND REPORTS ON WELLS

(DO NOT USE THIS FORM FOR PROPOSALS TO DRILL OR TO DEEPEN OR PLUG BACK TO A DIFFERENT RESERVOIR USE "APPLICATION FOR PERMIT" (FORM C-101) FOR SUCH PROPOSALS)

1. Type of Well:

Oil Well ☐ Gas Well ☒ Other TA'd

2. Name of Operator

Chevron USA Inc.

3. Address of Operator

#15 Smith Rd., Midland, TX 79705

4. Well Location

Unit Letter F; 1980 feet from the North line and 1980 feet from the West lineSection 28Township 17-SRange 34-E

NMPM

Lea

County

11. Elevation (Show whether DR, RKB, RT, GR, etc.)

**Pit or Below-grade Tank Application (For pit or below-grade tank closures, a form C-144 must be attached)**Pit Location: UL F Sect 28 Twp 17-S Rng 34-E Pit type Steel Depth to Groundwater \_\_\_\_\_ Distance from nearest fresh water well \_\_\_\_\_

Distance from nearest surface water \_\_\_\_\_ Below-grade Tank Location UL \_\_\_\_\_ Sect \_\_\_\_\_ Twp \_\_\_\_\_ Rng \_\_\_\_\_;

1980 feet from the North line and 1980 feet from the West line (Steel Tank)

## 12. Check Appropriate Box to Indicate Nature of Notice, Report or Other Data

## NOTICE OF INTENTION TO:

PERFORM REMEDIAL WORK ☐ PLUG AND ABANDON ☒TEMPORARILY ABANDON ☐ CHANGE PLANS ☐PULL OR ALTER CASING ☐ MULTIPLE COMPLETION ☐OTHER. ☐

## SUBSEQUENT REPORT OF:

REMEDIAL WORK ☐ ALTERING CASING ☐COMMENCE DRILLING OPNS. ☐ PLUG AND ABANDONMENT ☐CASING TEST AND CEMENT JOB ☐OTHER. ☐

13. Describe proposed or completed operations. (Clearly state all pertinent details, and give pertinent dates, including estimated date of starting any proposed work). SEE RULE 1103. For Multiple Completions: Attach wellbore diagram of proposed completion or recompletion.

6. Perf and squeeze 75sx cement plug from 1720'-1455' (shoe/T.Salt est.) WOC&amp;TAG.

7. Perf and squeeze 105sx cement plug from 400'-surface' (Fr.Wtr./surface) Verify TOC.

8. Install dryhole marker and clean location.

I hereby certify that the information above is true and complete to the best of my knowledge and belief. I further certify that any pit or below-grade tank has been/will be constructed or closed according to NMOCD guidelines ☐, a general permit ☐ or an (attached) alternative OCD-approved plan ☐.SIGNATURE M. Lee Roark TITLE Agent for Chevron USA, Inc. DATE 8-16-2011Type or print name M. Lee Roark E-mail address: \_\_\_\_\_ Telephone No. 432-561-8600

(This space for State use)

APPROVED BY [Signature] TITLE STATE MGR DATE 8-17-2011  
Conditions of approval, if any: \_\_\_\_\_

# NVAWU #16

## LOCATION

State	New Mexico
County	Lea
Surface Locat	1980 FNL 1980 FWL
	Sec 28, T-17S, R-34E

## WELL ID INFORMATION

Lease Name	North Vacuum Abo West Unit
Field	Vacuum North
Reservoir	Abo
Ref #	
API #	30-025-24047

DF

GL 4068

Original Spud Date 3/6/1972

Original Compl Date 4/19/1972

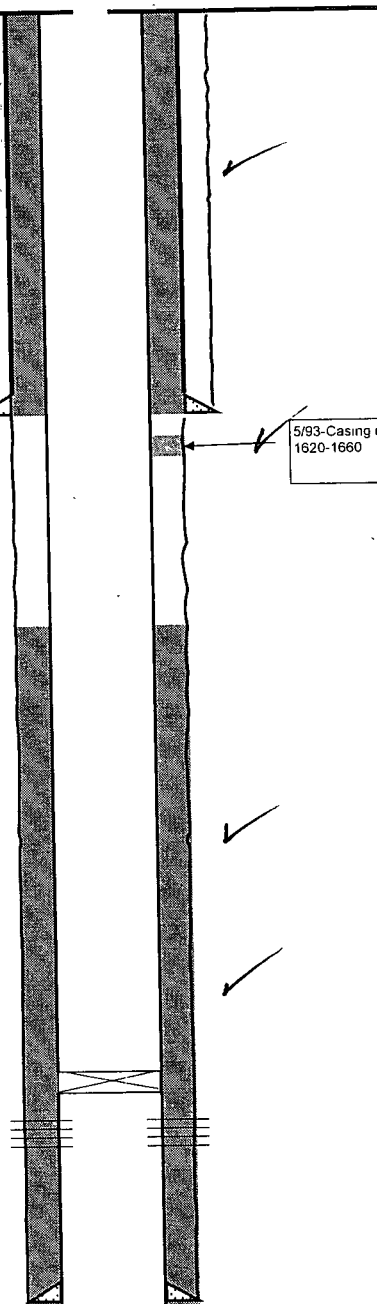
## CASING DETAIL

<b>Surface Csg.</b>	
Size	8 5/8"
Wt	24# K-55
Set @	1620'
Sxs cmt	850sx
TOC	Surface
Hole Size	11"
<b>Production Csg.</b>	
Size	5 1/2"
Wt (top to bottom)	17# N-80
Set @	8910'
Sxs Cmt	3000sx
TOC	
Hole Size	7 7/8"

## NVAWU #16

## Well History

4/17/1972	<b>Initial Completion</b> Spotted 250gal double inhibited 15% NEA in 5-1/2" csg 8870-8570' Perforations 8777,87,81,89,92,94,95,8807,14,20,22,28,30,36,42,44,50,51,57,59 (2spf) Acidize perms with 500gal 15% NEA & 10,000gal 20% NEA in 4- 2500gal stages with 200# benzoic flakes b/t stgs, overflush ea stg w/500gals 15% NEA & 3000gal gel brine MaxP 5000#, IR 5 bpm, ISIP 2800#, 15min 2700# 24hr test pumped 121 bo, 7bw, 112 mcf
10/11/1984	<b>Convert to Injection</b> Acidize perms 8777' - 8859' w/10000gal 30# gel brine, 10000gal 20% NEFE acid in 2 equal stages 500# rock salt between stages, flush w/2500gals gel brine Ran 2-3/8" plastic coated tbg to 8738'
12/13/1990	<b>Repair Casing Leak</b> Tested csg with packer & plug - csg ok above 8227 Set 2-3/8" tbg to 8200'
5/24/1993	<b>Bradenhead Squeeze</b> 400sx Class "C" 2% CaCl ISIP 400# Injection Rate 185bpd @ 1550psi
3/12/1997	<b>Step Rate Test</b> Maximum Surface Injection Pressure 4165psig 5-1/2" packer set @ 8454'  <b>Abo perforations</b> 8777,78,81,89,92,94,95,8807,14,20,22,28,30,36,42,44,50,51,57,59 (2spf)
9/2006	set CIBP @ 8450' capped w/ 1 sx cement TA'd 9/19/06

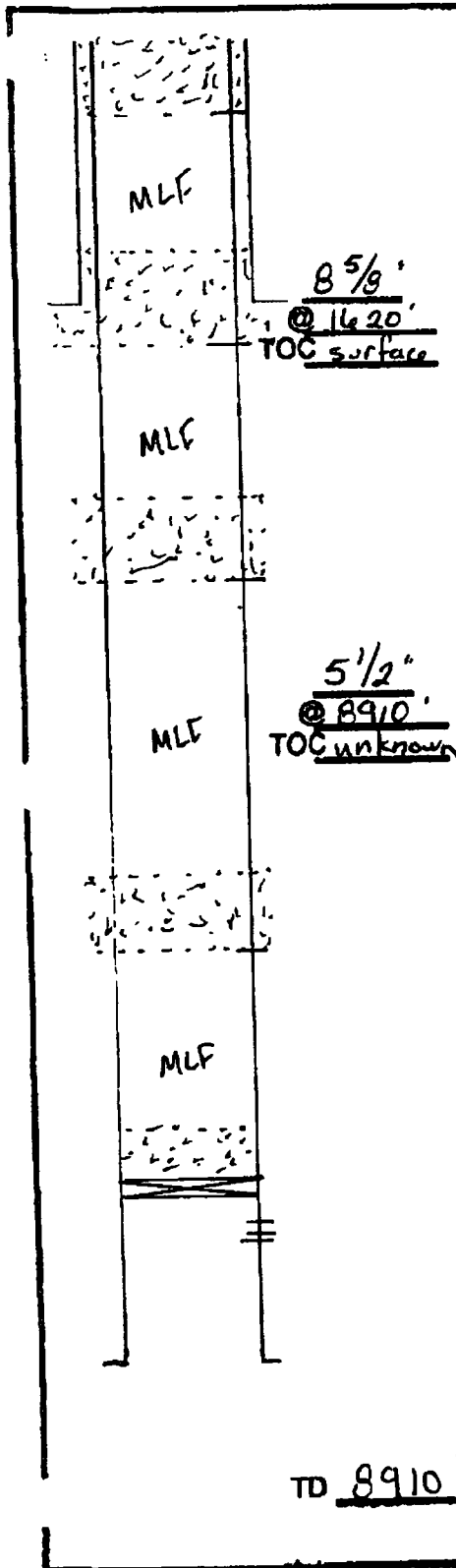


PBTD:  
TD: 8910'

UPDATED BY SMI  
DATE 3/12/2010

**PLUGGING & ABANDONMENT WORKSHEET (2 STRING CSNG)**OPERATOR CHEVRON USA Inc.LEASENAME North Vacuum Abo West UnitWELL # 16SECT 28 TWN 17S RNG 34EFROM 1980 (NSL) 1980 (EVL)TD: 8910' FORMATION @ TD

PBTD: FORMATION @ PBTD



	SIZE	SET @	TOC	TOC DETERMINED BY	
SURFACE	8 5/8"		surface	circulated	
INTMED 1					
INTMED 2					
PROD	5 1/2"	8910	unknown		
	SIZE	TOP	BOT	TOC	DETERMINED BY
LINER 1					
LINER 2					
	CUT & PULL @			TOP - BOTTOM	
INTMED 1			PERF	8777 - 8859	
INTMED 2			OPENHOLE	-	
PROD					

**\*REQUIRED PLUGS DISTRICT!**

PLUG	TYPE	BACKS	DEPTH
PLUG	PLUG	CMNT	
EXAMPLES			
PLUG #1	OH	35 SXS	6400'
PLUG #2	SHOE	50 SXS	3350'-5450'
PLUG #3	CIBP/35'		4800'
PLUG #4	CIBP	25 SXS	4800'
PLUG #5	STUB	50 SXS	3600'-3700'
PLUG #6	RETNR SXS	200 SXS	400'
PLUG #7	SURF	10 SXS	0-10'
PLUG #8	CIBP	305x	8450'-8250'
PLUG #9	Gloricta	1405x	16290'-6090
PLUG #10	S. Anchor	555x	2965'-2765
PLUG #11	B. Salt est.		
PLUG #12	shoe	755x	1720'-1455
PLUG #13	T. Salt est.		
PLUG #14	Ec. Wtr.	1095x	400'-surface
PLUG #15	surface		
PLUG #16			
PLUG #17			
PLUG #18			
PLUG #19			
PLUG #20			
PLUG #21			
PLUG #22			
PLUG #23			
PLUG #24			
PLUG #25			
PLUG #26			
PLUG #27			
PLUG #28			
PLUG #29			
PLUG #30			
PLUG #31			
PLUG #32			
PLUG #33			
PLUG #34			
PLUG #35			
PLUG #36			
PLUG #37			
PLUG #38			
PLUG #39			
PLUG #40			
PLUG #41			
PLUG #42			
PLUG #43			
PLUG #44			
PLUG #45			
PLUG #46			
PLUG #47			
PLUG #48			
PLUG #49			
PLUG #50			
PLUG #51			
PLUG #52			
PLUG #53			
PLUG #54			
PLUG #55			
PLUG #56			
PLUG #57			
PLUG #58			
PLUG #59			
PLUG #60			
PLUG #61			
PLUG #62			
PLUG #63			
PLUG #64			
PLUG #65			
PLUG #66			
PLUG #67			
PLUG #68			
PLUG #69			
PLUG #70			
PLUG #71			
PLUG #72			
PLUG #73			
PLUG #74			
PLUG #75			
PLUG #76			
PLUG #77			
PLUG #78			
PLUG #79			
PLUG #80			
PLUG #81			
PLUG #82			
PLUG #83			
PLUG #84			
PLUG #85			
PLUG #86			
PLUG #87			
PLUG #88			
PLUG #89			
PLUG #90			
PLUG #91			
PLUG #92			
PLUG #93			
PLUG #94			
PLUG #95			
PLUG #96			
PLUG #97			
PLUG #98			
PLUG #99			
PLUG #100			

TD 8910