

DISTRICT I
1625 N. French Dr., Hobbs, NM 88240
Phone: (575) 393-6161 Fax: (575) 393-0720

DISTRICT II
811 S. First St., Artesia, NM 88210
Phone: (575) 748-1283 Fax: (575) 748-9720

DISTRICT III
1000 Rio Brazos Rd., Aztec, NM 87410
Phone: (505) 334-6178 Fax: (505) 334-6170

DISTRICT IV
1220 S. St. Francis Dr., Santa Fe, NM 87505
Phone: (505) 476-3460 Fax: (505) 476-3462

State of New Mexico
Energy, Minerals & Natural Resources Department

OIL CONSERVATION DIVISION
1220 South St. Frances Dr.
Santa Fe, NM 87505

Form C-102
Revised August 1, 2011
Submit one copy to appropriate
District Office

☐ AMENDED REPORT

WELL LOCATION AND ACREAGE DEDICATION PLAT

API Number 30-025-45210	Pool Code 37570	Pool Name LEA;BONE SPRING
Property Code 302802	Property Name LEA UNIT	Well Number 65H
OGRID No. 240974	Operator Name LEGACY RESERVES OPERATING LP	Elevation 3654'

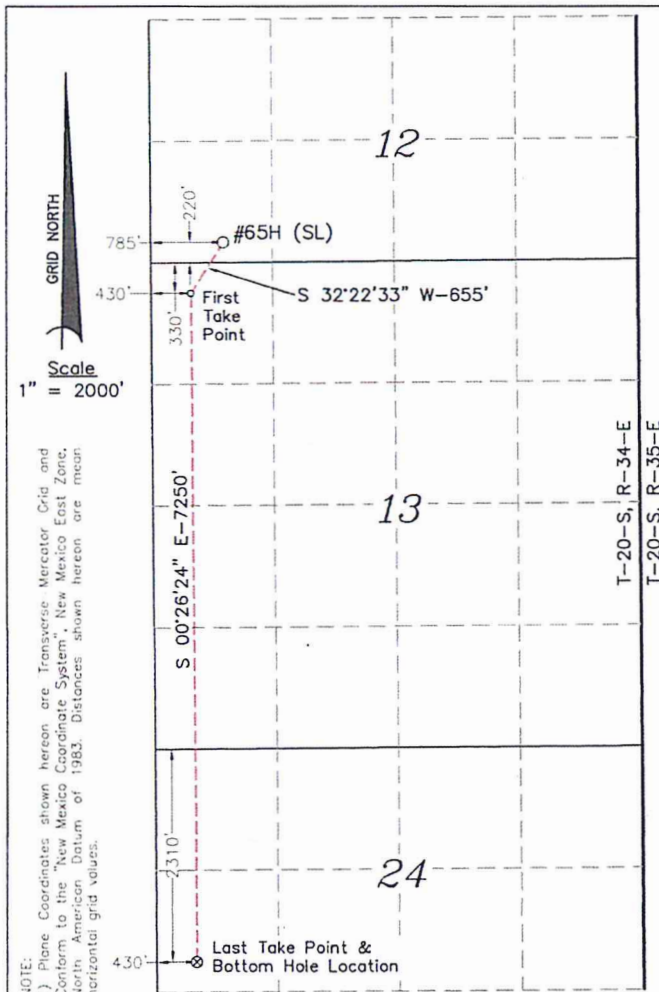
Surface Location

UL or lot No.	Section	Township	Range	Lot Idn	Feet from the	North/South line	Feet from the	East/West line	County
M	12	20 S	34 E		220	SOUTH	785	WEST	LEA

Bottom Hole Location If Different From Surface

UL or lot No.	Section	Township	Range	Lot Idn	Feet from the	North/South line	Feet from the	East/West line	County
E	24	20 S	34 E		2,310	NORTH	430	WEST	LEA
Dedicated Acres	Joint or Infill	Consolidation Code	Order No.						

NO ALLOWABLE WILL BE ASSIGNED TO THIS COMPLETION UNTIL ALL INTERESTS HAVE BEEN CONSOLIDATED OR A NON-STANDARD UNIT HAS BEEN APPROVED BY THE DIVISION



SURFACE LOCATION
Plane Coordinate (NAD '83)
Y = 576,042.85
X = 791,930.17
Geodetic Coordinate (NAD '83)
Latitude = 32.58096229° N
Longitude = 103.51977869° W

FIRST TAKE POINT LOCATION
Plane Coordinate (NAD '83)
Y = 575,489.74
X = 791,579.48
Geodetic Coordinate (NAD '83)
Latitude = 32.57944943° N
Longitude = 103.52093082° W

LAST TAKE POINT LOCATION
& BOTTOM HOLE LOCATION
Plane Coordinate (NAD '83)
Y = 568,240.17
X = 791,635.14
Geodetic Coordinate (NAD '83)
Latitude = 32.55952297° N
Longitude = 103.52092979° W

OPERATOR CERTIFICATION

I hereby certify that the information contained herein is true and complete to the best of my knowledge and belief, and that this organization either owns a working interest or unleased mineral interest in the land including the proposed bottom hole location or has a right to drill this well at this location pursuant to a contract with an owner of such a mineral or working interest, or to a voluntary pooling agreement or a compulsory pooling order heretofore entered by the division.

Signature: *Sherry Morrow* Date: *5/19/2018*
Printed Name: *Sherry Morrow*
E-mail Address: *SMorrow@legacylp.com*

SURVEYOR CERTIFICATION

I hereby certify that the well location shown on this plat was plotted from field notes of actual surveys made by me or under my supervision, and that the same is true and correct to the best of my belief.

November 16, 2017

Date of Survey: SC
Signature & Seal of Professional Surveyor

02-28-18
LINDSAY GYGAX
NEW MEXICO
23263
W.O. Num. 0929
Certificate No. Lindsay Gygax 23263