

District I  
1625 N. French Dr., Hobbs, NM 88240  
Phone: (575) 393-6161 Fax: (575) 393-0720  
District II  
811 S. First St., Artesia, NM 88210  
Phone: (575) 748-1283 Fax: (575) 748-9720  
District III  
1000 Rio Brazos Road, Aztec, NM 87410  
Phone: (505) 334-6178 Fax: (505) 334-6170  
District IV  
1220 S. St. Francis Dr., Santa Fe, NM 87505  
Phone: (505) 476-3460 Fax: (505) 476-3462

State of New Mexico  
Energy, Minerals & Natural Resources Department  
OIL CONSERVATION DIVISION  
1220 South St. Francis Dr.  
Santa Fe, NM 87505

Form C-102  
Revised August 1, 2011  
Submit one copy to appropriate  
District Office

**OCB - HOBBS**  
**10/10/2018**  
**RECEIVED**

☐ AMENDED REPORT

WELL LOCATION AND ACREAGE DEDICATION PLAT

|  |  |   |
|--|--|---|
| <sup>1</sup> API Number<br><b>30-025-45259</b> | <sup>2</sup> Pool Code<br><b>97900</b>                                     | <sup>3</sup> Pool Name<br><b>RED HILLS; UPPER BONE SPRING SHALE</b> |
| <sup>4</sup> Property Code<br><b>322149</b>    | <sup>5</sup> Property Name<br><b>FLAGLER 8 FEDERAL</b>                     | <sup>6</sup> Well Number<br><b>26H</b>                              |
| <sup>7</sup> OGRID No.<br><b>6137</b>          | <sup>8</sup> Operator Name<br><b>DEVON ENERGY PRODUCTION COMPANY, L.P.</b> | <sup>9</sup> Elevation<br><b>3445.7</b>                             |

<sup>10</sup> Surface Location

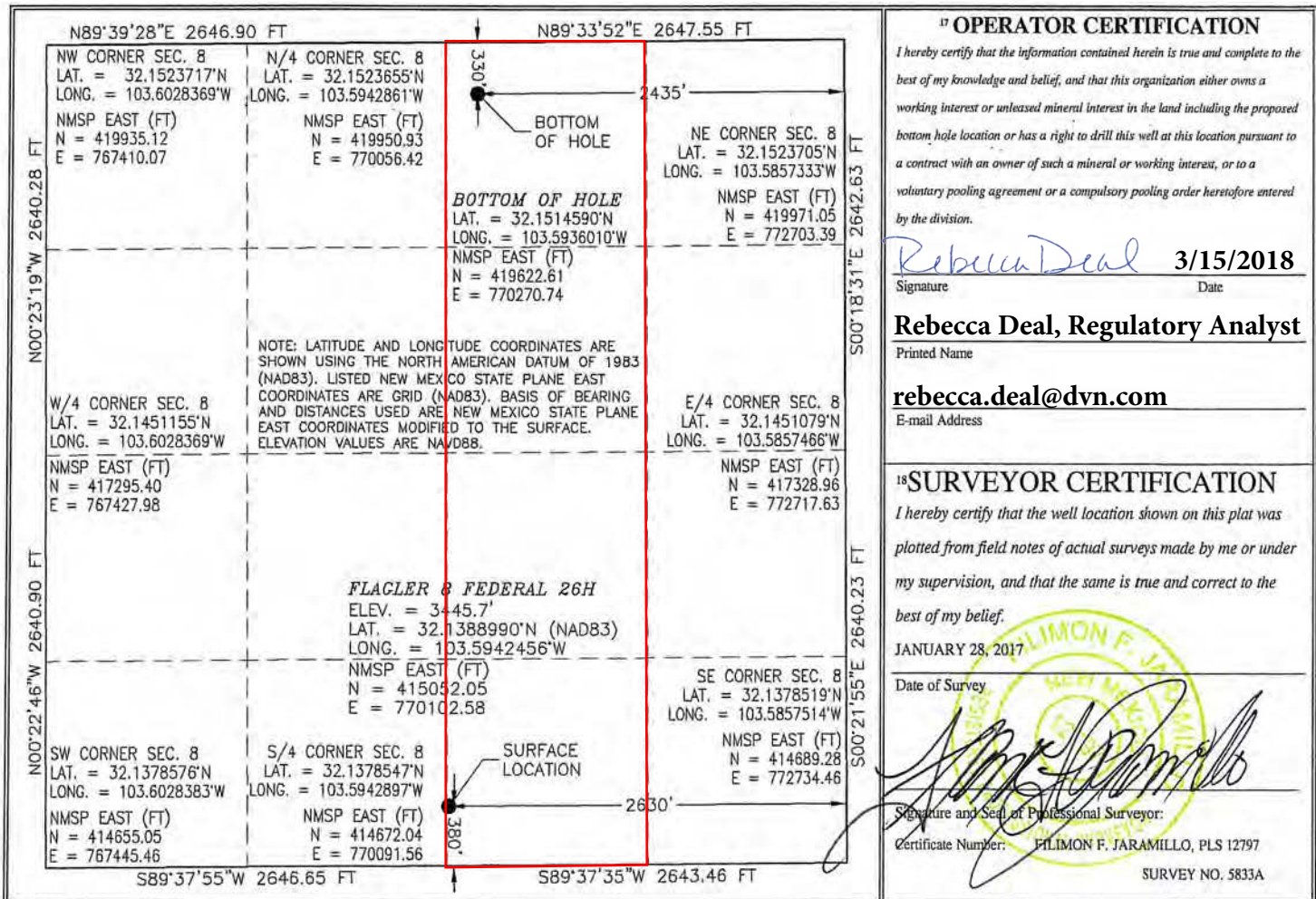
| UL or lot no. | Section  | Township    | Range       | Lot Idn | Feet from the | North/South line | Feet from the | East/West line | County     |
|---------------|----------|-------------|-------------|---------|---------------|------------------|---------------|----------------|------------|
| <b>O</b>      | <b>8</b> | <b>25 S</b> | <b>33 E</b> |         | <b>380</b>    | <b>SOUTH</b>     | <b>2630</b>   | <b>EAST</b>    | <b>LEA</b> |

<sup>11</sup> Bottom Hole Location If Different From Surface

| UL or lot no. | Section  | Township    | Range       | Lot Idn | Feet from the | North/South line | Feet from the | East/West line | County     |
|---------------|----------|-------------|-------------|---------|---------------|------------------|---------------|----------------|------------|
| <b>B</b>      | <b>8</b> | <b>25 S</b> | <b>33 E</b> |         | <b>330</b>    | <b>NORTH</b>     | <b>2435</b>   | <b>EAST</b>    | <b>LEA</b> |

|   |                               |                                  |                         |
|---|-------------------------------|----------------------------------|-------------------------|
| <sup>12</sup> Dedicated Acres<br><b>160</b> | <sup>13</sup> Joint or Infill | <sup>14</sup> Consolidation Code | <sup>15</sup> Order No. |
|---|-------------------------------|----------------------------------|-------------------------|

No allowable will be assigned to this completion until all interests have been consolidated or a non-standard unit has been approved by the division.



**First Take Point: 330' FSL & 2435' FEL, 8-25S-33E**

**Last Take Point: 330' FNL & 2435' FEL, 8-25S-33E**