

District I  
1625 N. French Dr., Hobbs, NM 88240  
Phone: (575) 393-6161 Fax: (575) 393-0720  
District II  
811 S First St., Artesia, NM 88210  
Phone: (575) 748-1283 Fax: (575) 748-9720  
District III  
1000 Rio Arizos Road, Aztec, NM 87410  
Phone: (505) 334-6178 Fax: (505) 334-6170  
District IV  
1220 S. St. Francis Dr., Santa Fe, NM 87505  
Phone: (505) 476-3460 Fax: (505) 476-3462

State of New Mexico  
Energy, Minerals & Natural Resources Department  
OIL CONSERVATION DIVISION  
1220 South St. Francis Dr.  
Santa Fe, NM 87505

Form C-102  
Revised August 1, 2011  
Submit one copy to appropriate District Office

☐ AMENDED REPORT

RED HILLS;BS, NORTH

WELL LOCATION AND ACREAGE DEDICATION PLAT

1 API Number <b>30-025-45577</b>	2 Pool Code <b>96434</b>	3 Pool Name <b>XXXXXXXXXXXXXXX</b>
4 Property Code <b>318029</b>	5 Property Name <b>SOLOMON FEDERAL COM</b>	6 Well Number <b>505H</b>
7 GRID No. <b>372165</b>	8 Operator Name <b>CENTENNIAL RESOURCE PRODUCTION, LLC</b>	9 Elevation <b>3522.1'</b>

"Surface Location

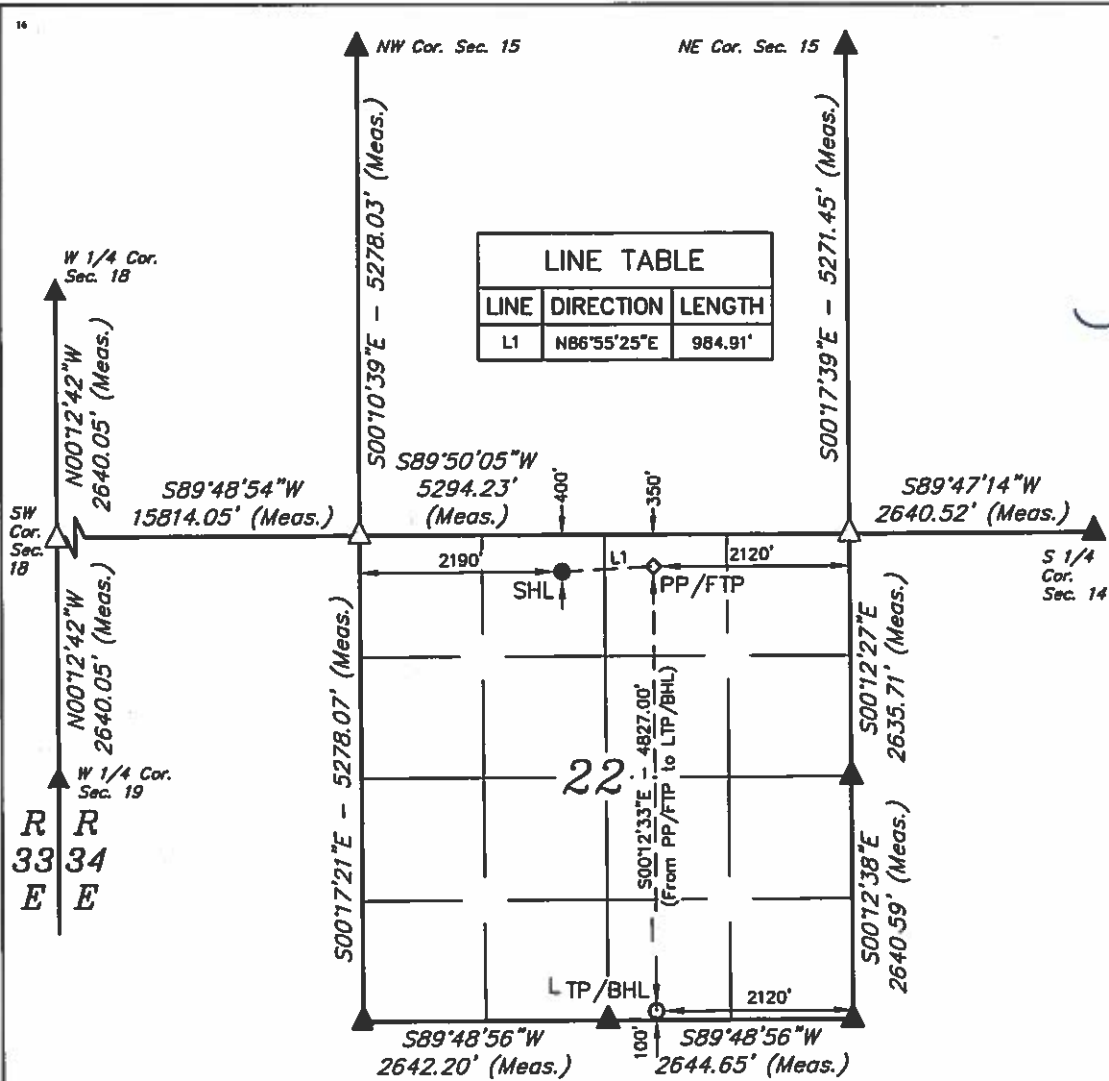
UL or lot no.	Section	Township	Range	Lot Idn	Feet from the	North/South line	Feet from the	East/West line	County
C	22	24S	34E		400	NORTH	2190	WEST	LEA

"Bottom Hole Location If Different From Surface

UL or lot no.	Section	Township	Range	Lot Idn	Feet from the	North/South line	Feet from the	East/West line	County
O	22	24S	34E		100	SOUTH	2120	EAST	LEA

11 Dedicated Acres 160	12 Joint or Infill	13 Consolidation Code	14 Order No.
---------------------------	--------------------	-----------------------	--------------

No allowable will be assigned to this completion until all interests have been consolidated or a non-standard unit has been approved by the division.



17 OPERATOR CERTIFICATION  
I hereby certify that the information contained herein is true and complete to the best of my knowledge and belief, and that this organization either owns a working interest or unleased mineral interest in the land including the proposed bottom hole location or has a right to drill this well at this location pursuant to a contract with an owner of such a mineral or working interest, or to a voluntary pooling agreement or a compulsory pooling order heretofore entered by the division.

Signature: *Melissa Luke* Date: *04/15/18*  
Printed Name: Melissa Luke  
E-mail Address: melissa.luke@cdevinc.com

18 SURVEYOR CERTIFICATION  
I hereby certify that the well location shown on this plat was plotted from field notes of actual surveys made by me or under my supervision, and that the same is true and correct to the best of my belief.

February 13, 2018  
Date of Survey  
Signature and Seal of Professional Surveyor:

NAD 83 (SURFACE HOLE LOCATION) LATITUDE = 32°12'33.08" (32.209188°) LONGITUDE = 103°27'33.52" (103.459310°) STATE PLANE NAD 83 (N.M. EAST) Y: 440935.77' X: 811661.81' UTM, NAD 83 (ZONE 13) Y: 11693067.58' X: 2116802.23'
NAD 83 (LTP/BHL) LATITUDE = 32°11'45.80" (32.196057°) LONGITUDE = 103°27'22.09" (103.456136°) STATE PLANE NAD 83 (N.M. EAST) Y: 436166.65' X: 812682.73' UTM, NAD 83 (ZONE 13) Y: 11690305.51' X: 2117852.58'

NAD 83 (PP/FTP) LATITUDE = 32°12'33.56" (32.209323°) LONGITUDE = 103°27'22.07" (103.456131°) STATE PLANE NAD 83 (N.M. EAST) Y: 440992.74' X: 812644.92' UTM, NAD 83 (ZONE 13) Y: 11695130.63' X: 2117784.84'
--------------------------------------------------------------------------------------------------------------------------------------------------------------------------------------------------------------------------------

NOTE:  
• Distances referenced on plat to section lines are perpendicular.  
• Basis of Bearing is a Transverse Mercator Projection with a Central Meridian of W103°53'00"



DRAWN BY: C.D. 03-22-18

- = SURFACE HOLE LOCATION
- = FIRST TAKE POINT
- = LTP/BHL
- ▲ = SECTION CORNER LOCATED
- △ = SECTION CORNER RE-ESTABLISHED.  
(Not Set on Ground.)

PAUL BUCHELE  
NEW MEXICO  
23782  
04-30-18  
PROFESSIONAL SURVEYOR

Certificate Number: