

DISTRICT I  
1025 N. French Dr., Hobbs, NM 88240  
Phone (505) 393-6161 Fax: (505) 393-0720  
DISTRICT II  
911 S. First St., Artesia, NM 88210  
Phone (505) 748-1823 Fax: (505) 748-0720

DISTRICT III  
1000 Rio Bravos Rd., Aztec, NM 87410  
Phone (505) 334-6178 Fax: (505) 334-6170

DISTRICT IV  
1220 S. St. Francis Dr., Santa Fe, NM 87505  
Phone (505) 478-3480 Fax: (505) 478-3488

State of New Mexico  
Energy, Minerals and Natural Resources Department

OIL CONSERVATION DIVISION  
1220 South St. Francis Dr.  
Santa Fe, New Mexico 87505

Form C-102

Revised August 4, 2011

Submit one copy to appropriate  
District Office

WELL LOCATION AND ACREAGE DEDICATION PLAT

☐ AMENDED REPORT

API Number <b>30-024-45815</b>	Pool Code <b>97869</b>	Pool Name <b>SWD; DEVONIAN-SILURIAN</b>
Property Code	Property Name <b>DAGGER SWD</b>	Well Number <b>1</b>
OGRID No.	Operator Name <b>ADVANCE ENERGY PARTNERS HAT MESA</b>	Elevation <b>3802'</b>

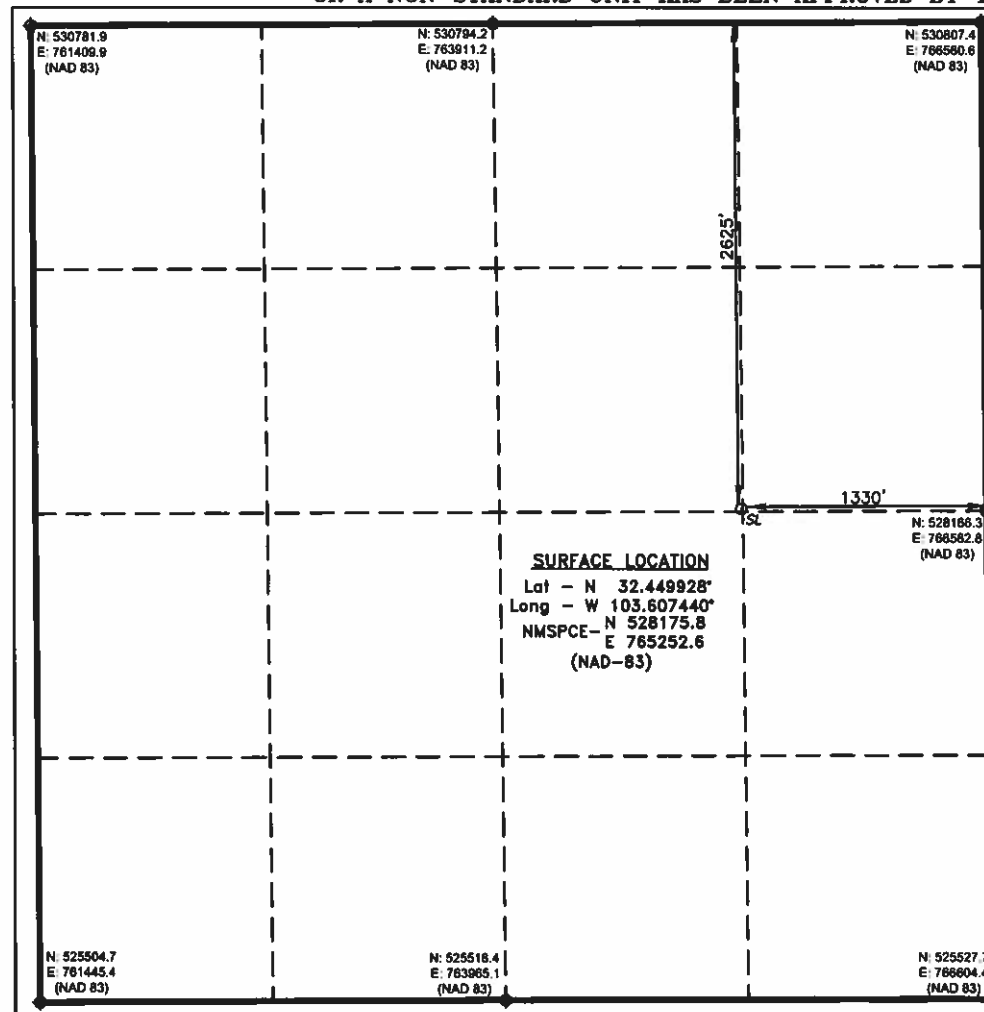
Surface Location

UL or lot No.	Section	Township	Range	Lot Idn	Feet from the	SOUTH/South line	Feet from the	East/West line	County
<b>G</b>	<b>30</b>	<b>21 S</b>	<b>33 E</b>		<b>2625</b>	<b>NORTH</b>	<b>1330</b>	<b>EAST</b>	<b>LEA</b>

Bottom Hole Location If Different From Surface

UL or lot No.	Section	Township	Range	Lot Idn	Feet from the	SOUTH/South line	Feet from the	East/West line	County
Dedicated Acres	Joint or Infill	Consolidation Code	Order No.						

NO ALLOWABLE WILL BE ASSIGNED TO THIS COMPLETION UNTIL ALL INTERESTS HAVE BEEN CONSOLIDATED  
OR A NON-STANDARD UNIT HAS BEEN APPROVED BY THE DIVISION



<b>OPERATOR CERTIFICATION</b> I hereby certify that the information contained herein is true and complete to the best of my knowledge and belief, and that this organization either owns a working interest or undivided mineral interest in the land including the proposed bottom hole location or has a right to drill this well at this location pursuant to a contract with an owner of such a mineral or working interest, or to a voluntary pooling agreement or a compulsory pooling order heretofore entered by the division.  Signature _____ Date _____  Printed Name _____  Email Address _____	
<b>SURVEYOR CERTIFICATION</b> I hereby certify that the well location shown on this plat was plotted from field notes of actual surveys made by me or under my supervision and that the same is true and correct to the best of my belief.  FEBRUARY 12 2019 Date Surveyed Signature & Seal of Professional Surveyor  Certificate No. 7977 Basis: 34035  0' 500' 1000' 1500' 2000' SCALE: 1" = 1000' WO Num.: 34035	