

District I1625 N. French Dr., Hobbs, NM 88240
Phone:(575) 393-6161 Fax:(575) 393-0720**District II**811 S. First St., Artesia, NM 88210
Phone:(575) 748-1283 Fax:(575) 748-9720**District III**1000 Rio Brazos Rd., Aztec, NM 87410
Phone:(505) 334-6178 Fax:(505) 334-6170**District IV**1220 S. St Francis Dr., Santa Fe, NM 87505
Phone:(505) 476-3470 Fax:(505) 476-3462

State of New Mexico
Energy, Minerals and Natural
Resources
Oil Conservation Division
1220 S. St Francis Dr.
Santa Fe, NM 87505

Form C-101
Revised July 18, 2013

Permit 269511

APPLICATION FOR PERMIT TO DRILL, RE-ENTER, DEEPEN, PLUGBACK, OR ADD A ZONE

1. Operator Name and Address MEWBOURNE OIL CO P.O. Box 5270 Hobbs, NM 88241		2. OGRID Number 14744
		3. API Number 30-025-46236
4. Property Code 325953	5. Property Name Cutthroat 7 B2PA State Com	6. Well No. 001H

7. Surface Location

UL - Lot P	Section 7	Township 21S	Range 35E	Lot Idn P	Feet From 205	N/S Line S	Feet From 600	E/W Line E	County LEA
---------------	--------------	-----------------	--------------	--------------	------------------	---------------	------------------	---------------	---------------

8. Proposed Bottom Hole Location

UL - Lot A	Section 7	Township 21S	Range 35E	Lot Idn A	Feet From 100	N/S Line N	Feet From 500	E/W Line E	County Lea
---------------	--------------	-----------------	--------------	--------------	------------------	---------------	------------------	---------------	---------------

9. Pool Information

97704	WILSON;BONE SPRING, NORTH [97704]	97704
-------	--	-------

Additional Well Information

11. Work Type New Well	12. Well Type OIL	13. Cable/Rotary	14. Lease Type State	15. Ground Level Elevation 3659
16. Multiple N	17. Proposed Depth	18. Formation 2nd Bone Spring Sand	19. Contractor	20. Spud Date 8/9/2019
Depth to Ground water		Distance from nearest fresh water well		Distance to nearest surface water

☒ We will be using a closed-loop system in lieu of lined pits**21. Proposed Casing and Cement Program**

Type	Hole Size	Casing Size	Casing Weight/ft	Setting Depth	Sacks of Cement	Estimated TOC
Surf	17.5	13.375	54.5	1825	1275	0
Int1	12.25	9.625	40	4393	0	0
Int1	12.25	9.625	40	5282	0	0
Int1	12.25	9.625	40	5400	780	0
Prod	8.75	7	26	10198	625	5200
Liner1	6.125	4.5	13.5	14883	225	9440

Casing/Cement Program: Additional Comments

MOC proposed to drill & test the Bone Springs formation. H2S rule 118 does not apply because MOC has researched the area & no high concentrations were found. Will have on location & working all H2S safety equipment before Yates formation for safety & insurance purposes. Will stimulate as needed for production.

22. Proposed Blowout Prevention Program

Type	Working Pressure	Test Pressure	Manufacturer
Annular	2000	1500	Schaffer
Double Ram	3000	3000	Schaffer
Annular	3000	1500	Schaffer

23. I hereby certify that the information given above is true and complete to the best of my knowledge and belief.

I further certify I have complied with 19.15.14.9 (A) NMAC ☒ and/or 19.15.14.9 (B) NMAC ☐ if applicable.

Signature:

Printed Name:

Title:

Email Address:

Date:

Bradley Bishop

BRUCEY BISNAP

Regulatory Manager

bbishop@meubone.com

7-15-19

Phone:

OIL CONSERVATION DIVISION

Approved By:

Title:

Approved Date:

Conditions of Approval Attached

Expiration Date:

District I

1625 N. French Dr., Hobbs, NM 88240
Phone:(575) 393-6161 Fax:(575) 393-0720

District II

811 S. First St., Artesia, NM 88210
Phone:(575) 748-1283 Fax:(575) 748-9720

District III

1000 Rio Brazos Rd., Aztec, NM 87410
Phone:(505) 334-6178 Fax:(505) 334-6170

District IV

1220 S. St Francis Dr., Santa Fe, NM 87505
Phone:(505) 476-3470 Fax:(505) 476-3462

State of New Mexico
Energy, Minerals and Natural
Resources
Oil Conservation Division
1220 S. St Francis Dr.
Santa Fe, NM 87505

Form C-102

August 1, 2011

Permit 269511

WELL LOCATION AND ACREAGE DEDICATION PLAT

1. API Number 30-025-46236	2. Pool Code 97704 WILSON;BONE SPRING, NORTH [97704]	3. Pool Name 97704
4. Property Code 325953	5. Property Name Cutthroat 7 B2PA State Com	6. Well No. 001H
7. OGRID No. 14744	8. Operator Name MEWBOURNE OIL CO	9. Elevation 3659

10. Surface Location

UL - Lot P	Section 7	Township 21S	Range 35E	Lot Idn P	Feet From 205	N/S Line S	Feet From 600	E/W Line E	County LEA
---------------	--------------	-----------------	--------------	--------------	------------------	---------------	------------------	---------------	---------------

11. Bottom Hole Location If Different From Surface

UL - Lot A	Section 7	Township 21S	Range 35E	Lot Idn A	Feet From 100	N/S Line N	Feet From 500	E/W Line E	County LEA
12. Dedicated Acres 160.00			13. Joint or Infill		14. Consolidation Code			15. Order No.	

NO ALLOWABLE WILL BE ASSIGNED TO THIS COMPLETION UNTIL ALL INTERESTS HAVE BEEN CONSOLIDATED OR A NON-STANDARD UNIT HAS BEEN APPROVED BY THE DIVISION

	<p align="center">OPERATOR CERTIFICATION</p> <p><i>I hereby certify that the information contained herein is true and complete to the best of my knowledge and belief, and that this organization either owns a working interest or unleased mineral interest in the land including the proposed bottom hole location(s) or has a right to drill this well at this location pursuant to a contract with an owner of such a mineral or working interest, or to a voluntary pooling agreement or a compulsory pooling order heretofore entered by the division.</i></p> <p>E-Signed By: Title: Date:</p>
	<p align="center">SURVEYOR CERTIFICATION</p> <p><i>I hereby certify that the well location shown on this plat was plotted from field notes of actual surveys made by me or under my supervision, and that the same is true and correct to the best of my belief.</i></p> <p>Surveyed By: Robert Howett Date of Survey: 10/20/2016 Certificate Number: 19680</p>

District I

1625 N. French Dr., Hobbs, NM 88240
Phone:(575) 393-6161 Fax:(575) 393-0720

District II

811 S. First St., Artesia, NM 88210
Phone:(575) 748-1283 Fax:(575) 748-9720

District III

1000 Rio Brazos Rd., Aztec, NM 87410
Phone:(505) 334-6178 Fax:(505) 334-6170

District IV

1220 S. St Francis Dr., Santa Fe, NM 87505
Phone:(505) 476-3470 Fax:(505) 476-3462

State of New Mexico
Energy, Minerals and Natural
Resources
Oil Conservation Division
1220 S. St Francis Dr.
Santa Fe, NM 87505

Form APD Conditions

Permit 269511

PERMIT CONDITIONS OF APPROVAL

Operator Name and Address: MEWBOURNE OIL CO [14744] P.O. Box 5270 Hobbs, NM 88241	API Number: Well: Cutthroat 7 B2PA State Com #001H
--	--

OCD Reviewer	Condition
--------------	-----------

District I

1625 N. French Dr., Hobbs, NM 88240
Phone:(575) 393-6161 Fax:(575) 393-0720

District II

811 S. First St., Artesia, NM 88210
Phone:(575) 748-1283 Fax:(575) 748-9720

District III

1000 Rio Brazos Rd., Aztec, NM 87410
Phone:(505) 334-6178 Fax:(505) 334-6170

District IV

1220 S. St Francis Dr., Santa Fe, NM 87505
Phone:(505) 476-3470 Fax:(505) 476-3462

**State of New Mexico
Energy, Minerals and Natural
Resources
Oil Conservation Division
1220 S. St Francis Dr.
Santa Fe, NM 87505**

Form APD Comments

Permit 269511

PERMIT COMMENTS

Operator Name and Address: MEWBOURNE OIL CO [14744]	API Number:
	Well: Cutthroat 7 B2PA State Com #001H

Created By	Comment	Comment Date
------------	---------	--------------

District I
1625 N. French Dr., Hobbs, NM 88240
Phone: (575) 393-6161 Fax: (575) 393-0720
District II
811 S. First St., Artesia, NM 88210
Phone: (575) 748-1283 Fax: (575) 748-9720
District III
1000 Rio Brazos Road, Aztec, NM 87410
Phone: (505) 334-6178 Fax: (505) 334-6170
District IV
1220 S. St. Francis Dr., Santa Fe, NM 87505
Phone: (505) 476-3460 Fax: (505) 476-3462

State of New Mexico
Energy, Minerals & Natural Resources Department
OIL CONSERVATION DIVISION
1220 South St. Francis Dr.
Santa Fe, NM 87505

Form C-102
Revised August 1, 2011
Submit one copy to appropriate
District Office

☐ AMENDED REPORT

WELL LOCATION AND ACREAGE DEDICATION PLAT

¹ API Number 30-025-46236	² Pool Code 97704	³ Pool Name WILSON; BONE SPRING, NORTH
⁴ Property Code 325953	⁵ Property Name CUTTHROAT 7 B2PA STATE COM	⁶ Well Number 1H
⁷ GRID NO. 14744	⁸ Operator Name MEWBOURNE OIL COMPANY	⁹ Elevation 3659'

¹⁰ Surface Location

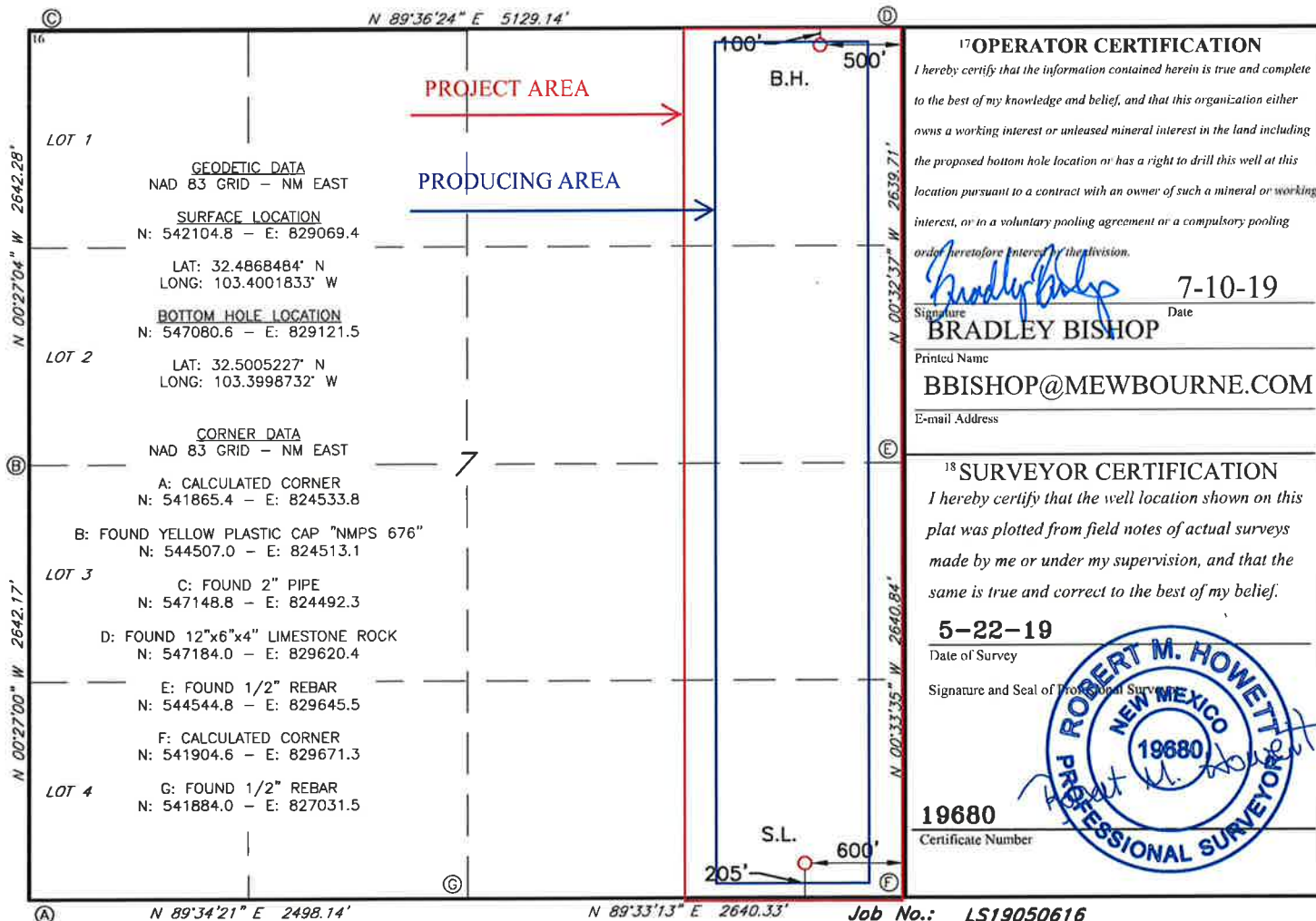
UL or lot no.	Section	Township	Range	Lot Idn	Feet from the	North/South line	Feet From the	East/West line	County
P	7	21S	35E		205	SOUTH	600	EAST	LEA

¹¹ Bottom Hole Location If Different From Surface

UL or lot no.	Section	Township	Range	Lot Idn	Feet from the	North/South line	Feet from the	East/West line	County
A	7	21S	35E		100	NORTH	500	EAST	LEA

¹² Dedicated Acres 160	¹³ Joint or Infill	¹⁴ Consolidation Code	¹⁵ Order No.
--------------------------------------	-------------------------------	----------------------------------	-------------------------

No allowable will be assigned to this completion until all interest have been consolidated or a non-standard unit has been approved by the division.



Job No.: LS19050616