

District I
1625 N. French Dr., Hobbs, NM 88240
Phone: (575) 393-6161 Fax: (575) 393-0720
District II
811 S. First St., Artesia, NM 88210
Phone: (575) 748-1283 Fax: (575) 748-9720
District III
1000 Rio Brazos Road, Aztec, NM 87410
Phone: (505) 334-6178 Fax: (505) 334-6170
District IV
1220 S. St. Francis Dr., Santa Fe, NM 87505
Phone: (505) 476-3460 Fax: (505) 476-3462

State of New Mexico
Energy, Minerals & Natural Resources
Department
OIL CONSERVATION DIVISION
1220 South St. Francis Dr.
Santa Fe, NM 87505

FORM C-102

Revised August 1, 2011

Submit one copy to appropriate

District Office

OCD - HOBBS
07/31/2019
RECEIVED

AMENDED REPORT

WELL LOCATION AND ACREAGE DEDICATION PLAT

| | | |
|--|---|---|
| ¹ API Number 30-025-45971 | ² Pool Code 98135 | ³ Pool Name WC 025 G09S2433 10P ; Upper Wolfcamp |
| ⁴ Property Code 325667 | ⁵ Property Name POSEIDON STATE COM | |
| ⁶ OGRID No. 372043 | ⁷ Operator Name TAP ROCK OPERATING, LLC. | ⁸ Well Number 201H |
| | | ⁹ Elevation 3610' |

¹⁰Surface Location

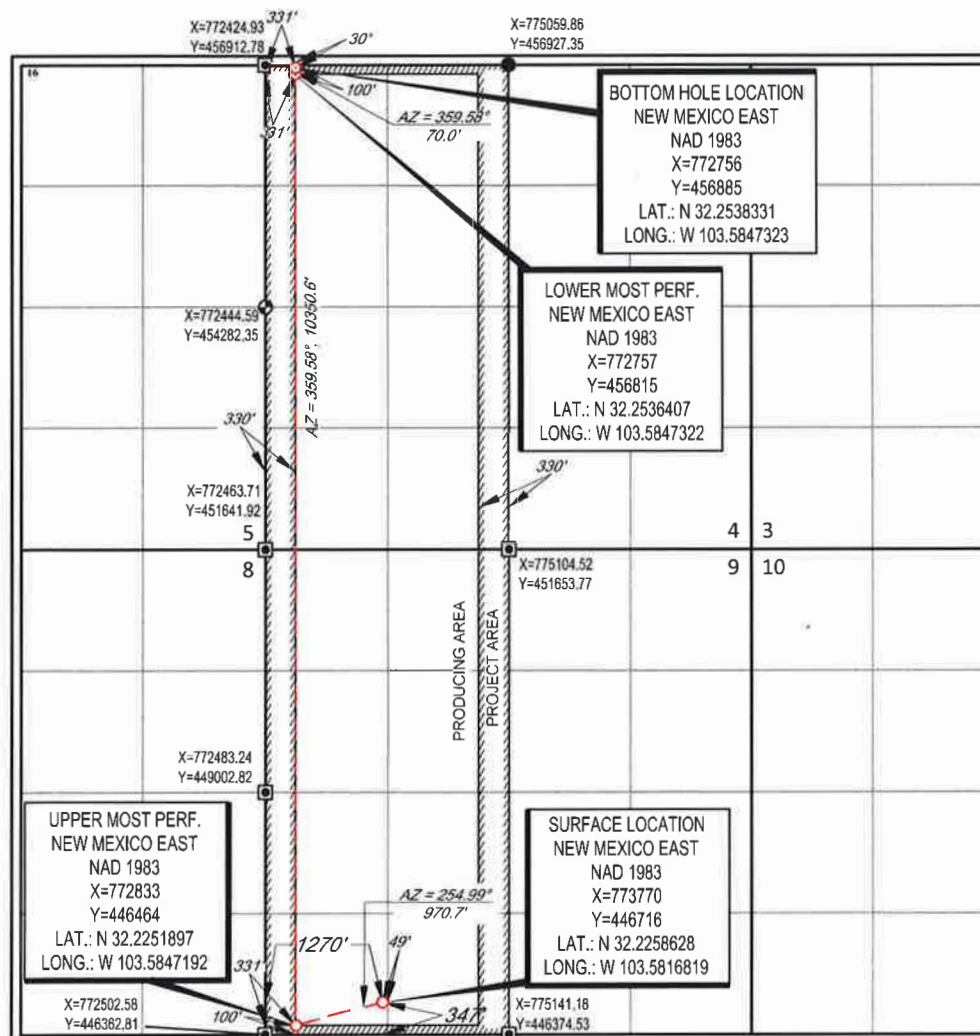
| | | | | | | | | | |
|---------------------------|---------------------|-------------------------|----------------------|---------------------|------------------------------|----------------------------------|-------------------------------|-------------------------------|----------------------|
| UL or lot no. M | Section 9 | Township 24-S | Range 33-E | Lot Idn - | Feet from the 347' | North/South line SOUTH | Feet from the 1270' | East/West line WEST | County LEA |
|---------------------------|---------------------|-------------------------|----------------------|---------------------|------------------------------|----------------------------------|-------------------------------|-------------------------------|----------------------|

¹¹Bottom Hole Location If Different From Surface

| | | | | | | | | | |
|---------------------------|---------------------|-------------------------|----------------------|----------------------|-----------------------------|----------------------------------|------------------------------|-------------------------------|----------------------|
| UL or lot no. D | Section 4 | Township 24-S | Range 33-E | Lot Idn 4- | Feet from the 30' | North/South line NORTH | Feet from the 331' | East/West line WEST | County LEA |
|---------------------------|---------------------|-------------------------|----------------------|----------------------|-----------------------------|----------------------------------|------------------------------|-------------------------------|----------------------|

| | | | |
|--|-------------------------------|----------------------------------|-------------------------|
| ¹² Dedicated Acres 639.62 | ¹³ Joint or Infill | ¹⁴ Consolidation Code | ¹⁵ Order No. |
|--|-------------------------------|----------------------------------|-------------------------|

No allowable will be assigned to this completion until all interests have been consolidated or a non-standard unit has been approved by the division.



¹⁷OPERATOR CERTIFICATION

I hereby certify that the information contained herein is true and complete to the best of my knowledge and belief, and that this organization either owns a working interest or undivided mineral interest in the land including the proposed bottom hole location or has a right to drill this well at this location pursuant to a contract with an owner of such a mineral or working interest, or to a voluntary pooling agreement or a compulsory pooling order heretofore entered by the division.

Erica Hixson 7/30/2019
Signature Date

Erica Hixson
Printed Name

ehixson@taprk.com
E-mail Address

¹⁸SURVEYOR CERTIFICATION

I hereby certify that the well location shown on this plat was plotted from field notes of actual surveys made by me or under my supervision, and that the same is true to the best of my belief.

06/14/2019

Date of Survey
Signature and Seal of Professional Surveyor



Certificate Number