



OCD - HOBBS
09/12/2019
RECEIVED

EOG Resources - Midland

Lea County, NM (NAD 83 NME)

Bandit 29 State Com

#604H

OH

Plan: Plan #0.1

Standard Planning Report

29 August, 2019

Database:	EDM 5000.14	Local Co-ordinate Reference:	Well #604H
Company:	EOG Resources - Midland	TVD Reference:	KB = 25 @ 3563.0usft
Project:	Lea County, NM.(NAD 83 NME)	MD Reference:	KB = 25 @ 3563.0usft
Site:	Bandit 29 State Com	North Reference:	Grid
Well:	#604H	Survey Calculation Method:	Minimum Curvature
Wellbore:	OH		
Design:	Plan #0.1		

Project:	Lea County, NM.(NAD 83 NME)		
Map System:	US State Plane 1983	System Datum:	Mean Sea Level
Geo Datum:	North American Datum 1983		
Map Zone:	New Mexico Eastern Zone		

Site:	Bandit 29 State Com		
Site Position:		Northing:	435,375.00 usft
From:	Map	Easting:	771,884.00 usft
Position Uncertainty:	0.0 usft	Slot Radius:	13-3/16 "
		Latitude:	32° 11' 41.017 N
		Longitude:	103° 35' 16.930 W
		Grid Convergence:	0.40 °

Well:	#604H		
Well Position	+N/-S	-41.0 usft	Northing:
	+E/-W	-3,577.0 usft	Easting:
Position Uncertainty	0.0 usft	Wellhead Elevation:	
		Latitude:	32° 11' 40.855 N
		Longitude:	103° 35' 58.559 W
		Ground Level:	3,538.0 usft

Wellbore	OH		
Magnetics	Model Name	Sample Date	Declination
			(°)
	IGRF2015	3/12/2019	6.78
			Dip Angle
			(°)
			60.01
			Field Strength
			(nT)
			47,738.68651374

Design	Plan #0.1		
Audit Notes:			
Version:	Phase:	PLAN	Tie On Depth:
			0.0
Vertical Section:	Depth From (TVD)	+N/-S	+E/-W
	(usft)	(usft)	(usft)
	0.0	0.0	0.0
			Direction
			(°)
			182.27

Plan Survey Tool Program	Date: 8/29/2019		
Depth From	Depth To	Survey (Wellbore)	Tool Name
(usft)	(usft)		
1	0.0	19,840.7 Plan #0.1 (OH)	MWD
			OWSG MWD - Standard
			Remarks

Plan Sections										
Measured	Inclination	Azimuth	Vertical	+N/-S	+E/-W	Dogleg	Build	Turn	TFO	Target
Depth	(°)	(°)	Depth	(usft)	(usft)	Rate	Rate	Rate	(°)	
(usft)			(usft)			(°/100usft)	(°/100usft)	(°/100usft)		
0.0	0.00	0.00	0.0	0.0	0.0	0.00	0.00	0.00	0.00	
1,300.0	0.00	0.00	1,300.0	0.0	0.0	0.00	0.00	0.00	0.00	
1,446.5	2.93	318.45	1,446.5	2.8	-2.5	2.00	2.00	0.00	318.45	
11,649.4	2.93	318.45	11,636.0	393.2	-348.5	0.00	0.00	0.00	0.00	
11,796.0	0.00	0.00	11,782.5	396.0	-351.0	2.00	-2.00	0.00	180.00	KOP(Bandit 29 St Co
12,546.0	90.00	179.57	12,260.0	-81.4	-347.4	12.00	12.00	23.94	179.57	
19,840.7	90.00	179.57	12,260.0	-7,376.0	-292.0	0.00	0.00	0.00	0.00	PBHL(Bandit 29 St Co

Database:	EDM 5000.14	Local Co-ordinate Reference:	Well #604H
Company:	Eog Resources - Midland	TVD Reference:	KB = 25 @ 3563.0usft
Project:	Lea County, NM (NAD 83 NME)	MD Reference:	KB = 25 @ 3563.0usft
Site:	Bandit 29 State Com	North Reference:	Grid
Well:	#604H	Survey Calculation Method:	Minimum Curvature
Wellbore:	OH		
Design:	Plan #0.1		

Planned Survey:									
Measured Depth (usft)	Inclination (°)	Azimuth (°)	Vertical Depth (usft)	+N/-S (usft)	+E/-W (usft)	Vertical Section (usft)	Dogleg Rate (°/100usft)	Build Rate (°/100usft)	Turn Rate (°/100usft)
0.0	0.00	0.00	0.0	0.0	0.0	0.0	0.00	0.00	0.00
100.0	0.00	0.00	100.0	0.0	0.0	0.0	0.00	0.00	0.00
200.0	0.00	0.00	200.0	0.0	0.0	0.0	0.00	0.00	0.00
300.0	0.00	0.00	300.0	0.0	0.0	0.0	0.00	0.00	0.00
400.0	0.00	0.00	400.0	0.0	0.0	0.0	0.00	0.00	0.00
500.0	0.00	0.00	500.0	0.0	0.0	0.0	0.00	0.00	0.00
600.0	0.00	0.00	600.0	0.0	0.0	0.0	0.00	0.00	0.00
700.0	0.00	0.00	700.0	0.0	0.0	0.0	0.00	0.00	0.00
800.0	0.00	0.00	800.0	0.0	0.0	0.0	0.00	0.00	0.00
900.0	0.00	0.00	900.0	0.0	0.0	0.0	0.00	0.00	0.00
1,000.0	0.00	0.00	1,000.0	0.0	0.0	0.0	0.00	0.00	0.00
1,100.0	0.00	0.00	1,100.0	0.0	0.0	0.0	0.00	0.00	0.00
1,200.0	0.00	0.00	1,200.0	0.0	0.0	0.0	0.00	0.00	0.00
1,300.0	0.00	0.00	1,300.0	0.0	0.0	0.0	0.00	0.00	0.00
1,400.0	2.00	318.45	1,400.0	1.3	-1.2	-1.3	2.00	2.00	0.00
1,446.5	2.93	318.45	1,446.5	2.8	-2.5	-2.7	2.00	2.00	0.00
1,500.0	2.93	318.45	1,499.9	4.8	-4.3	-4.7	0.00	0.00	0.00
1,600.0	2.93	318.45	1,599.7	8.7	-7.7	-8.4	0.00	0.00	0.00
1,700.0	2.93	318.45	1,699.6	12.5	-11.1	-12.1	0.00	0.00	0.00
1,800.0	2.93	318.45	1,799.5	16.3	-14.5	-15.7	0.00	0.00	0.00
1,900.0	2.93	318.45	1,899.3	20.2	-17.9	-19.4	0.00	0.00	0.00
2,000.0	2.93	318.45	1,999.2	24.0	-21.3	-23.1	0.00	0.00	0.00
2,100.0	2.93	318.45	2,099.1	27.8	-24.6	-26.8	0.00	0.00	0.00
2,200.0	2.93	318.45	2,199.0	31.6	-28.0	-30.5	0.00	0.00	0.00
2,300.0	2.93	318.45	2,298.8	35.5	-31.4	-34.2	0.00	0.00	0.00
2,400.0	2.93	318.45	2,398.7	39.3	-34.8	-37.9	0.00	0.00	0.00
2,500.0	2.93	318.45	2,498.6	43.1	-38.2	-41.6	0.00	0.00	0.00
2,600.0	2.93	318.45	2,598.4	46.9	-41.6	-45.3	0.00	0.00	0.00
2,700.0	2.93	318.45	2,698.3	50.8	-45.0	-48.9	0.00	0.00	0.00
2,800.0	2.93	318.45	2,798.2	54.6	-48.4	-52.6	0.00	0.00	0.00
2,900.0	2.93	318.45	2,898.0	58.4	-51.8	-56.3	0.00	0.00	0.00
3,000.0	2.93	318.45	2,997.9	62.2	-55.2	-60.0	0.00	0.00	0.00
3,100.0	2.93	318.45	3,097.8	66.1	-58.6	-63.7	0.00	0.00	0.00
3,200.0	2.93	318.45	3,197.6	69.9	-62.0	-67.4	0.00	0.00	0.00
3,300.0	2.93	318.45	3,297.5	73.7	-65.3	-71.1	0.00	0.00	0.00
3,400.0	2.93	318.45	3,397.4	77.5	-68.7	-74.8	0.00	0.00	0.00
3,500.0	2.93	318.45	3,497.3	81.4	-72.1	-78.5	0.00	0.00	0.00
3,600.0	2.93	318.45	3,597.1	85.2	-75.5	-82.1	0.00	0.00	0.00
3,700.0	2.93	318.45	3,697.0	89.0	-78.9	-85.8	0.00	0.00	0.00
3,800.0	2.93	318.45	3,796.9	92.9	-82.3	-89.5	0.00	0.00	0.00
3,900.0	2.93	318.45	3,896.7	96.7	-85.7	-93.2	0.00	0.00	0.00
4,000.0	2.93	318.45	3,996.6	100.5	-89.1	-96.9	0.00	0.00	0.00
4,100.0	2.93	318.45	4,096.5	104.3	-92.5	-100.6	0.00	0.00	0.00
4,200.0	2.93	318.45	4,196.3	108.2	-95.9	-104.3	0.00	0.00	0.00
4,300.0	2.93	318.45	4,296.2	112.0	-99.3	-108.0	0.00	0.00	0.00
4,400.0	2.93	318.45	4,396.1	115.8	-102.7	-111.7	0.00	0.00	0.00
4,500.0	2.93	318.45	4,495.9	119.6	-106.0	-115.3	0.00	0.00	0.00
4,600.0	2.93	318.45	4,595.8	123.5	-109.4	-119.0	0.00	0.00	0.00
4,700.0	2.93	318.45	4,695.7	127.3	-112.8	-122.7	0.00	0.00	0.00
4,800.0	2.93	318.45	4,795.5	131.1	-116.2	-126.4	0.00	0.00	0.00
4,900.0	2.93	318.45	4,895.4	134.9	-119.6	-130.1	0.00	0.00	0.00
5,000.0	2.93	318.45	4,995.3	138.8	-123.0	-133.8	0.00	0.00	0.00
5,100.0	2.93	318.45	5,095.2	142.6	-126.4	-137.5	0.00	0.00	0.00
5,200.0	2.93	318.45	5,195.0	146.4	-129.8	-141.2	0.00	0.00	0.00

Database:	EDM 5000.14	Local Co-ordinate Reference:	Well #604H
Company:	EOG Resources - Midland	TVD Reference:	KB = 25 @ 3563.0usft
Project:	Lea County, NM (NAD 83 NME)	MD Reference:	KB = 25 @ 3563.0usft
Site:	Bandit 29 State, Com	North Reference:	Grid
Well:	#604H	Survey Calculation Method:	Minimum Curvature
Wellbore:	OH		
Design:	Plan #0.1		

Planned Survey									
Measured Depth (usft)	Inclination (°)	Azimuth (°)	Vertical Depth (usft)	+N/-S (usft)	+E/-W (usft)	Vertical Section (usft)	Dogleg Rate (°/100usft)	Build Rate (°/100usft)	Turn Rate (°/100usft)
5,300.0	2.93	318.45	5,294.9	150.2	-133.2	-144.9	0.00	0.00	0.00
5,400.0	2.93	318.45	5,394.8	154.1	-136.6	-148.6	0.00	0.00	0.00
5,500.0	2.93	318.45	5,494.6	157.9	-140.0	-152.2	0.00	0.00	0.00
5,600.0	2.93	318.45	5,594.5	161.7	-143.3	-155.9	0.00	0.00	0.00
5,700.0	2.93	318.45	5,694.4	165.6	-146.7	-159.6	0.00	0.00	0.00
5,800.0	2.93	318.45	5,794.2	169.4	-150.1	-163.3	0.00	0.00	0.00
5,900.0	2.93	318.45	5,894.1	173.2	-153.5	-167.0	0.00	0.00	0.00
6,000.0	2.93	318.45	5,994.0	177.0	-156.9	-170.7	0.00	0.00	0.00
6,100.0	2.93	318.45	6,093.8	180.9	-160.3	-174.4	0.00	0.00	0.00
6,200.0	2.93	318.45	6,193.7	184.7	-163.7	-178.1	0.00	0.00	0.00
6,300.0	2.93	318.45	6,293.6	188.5	-167.1	-181.8	0.00	0.00	0.00
6,400.0	2.93	318.45	6,393.5	192.3	-170.5	-185.4	0.00	0.00	0.00
6,500.0	2.93	318.45	6,493.3	196.2	-173.9	-189.1	0.00	0.00	0.00
6,600.0	2.93	318.45	6,593.2	200.0	-177.3	-192.8	0.00	0.00	0.00
6,700.0	2.93	318.45	6,693.1	203.8	-180.7	-196.5	0.00	0.00	0.00
6,800.0	2.93	318.45	6,792.9	207.6	-184.0	-200.2	0.00	0.00	0.00
6,900.0	2.93	318.45	6,892.8	211.5	-187.4	-203.9	0.00	0.00	0.00
7,000.0	2.93	318.45	6,992.7	215.3	-190.8	-207.6	0.00	0.00	0.00
7,100.0	2.93	318.45	7,092.5	219.1	-194.2	-211.3	0.00	0.00	0.00
7,200.0	2.93	318.45	7,192.4	222.9	-197.6	-215.0	0.00	0.00	0.00
7,300.0	2.93	318.45	7,292.3	226.8	-201.0	-218.6	0.00	0.00	0.00
7,400.0	2.93	318.45	7,392.1	230.6	-204.4	-222.3	0.00	0.00	0.00
7,500.0	2.93	318.45	7,492.0	234.4	-207.8	-226.0	0.00	0.00	0.00
7,600.0	2.93	318.45	7,591.9	238.3	-211.2	-229.7	0.00	0.00	0.00
7,700.0	2.93	318.45	7,691.8	242.1	-214.6	-233.4	0.00	0.00	0.00
7,800.0	2.93	318.45	7,791.6	245.9	-218.0	-237.1	0.00	0.00	0.00
7,900.0	2.93	318.45	7,891.5	249.7	-221.4	-240.8	0.00	0.00	0.00
8,000.0	2.93	318.45	7,991.4	253.6	-224.7	-244.5	0.00	0.00	0.00
8,100.0	2.93	318.45	8,091.2	257.4	-228.1	-248.2	0.00	0.00	0.00
8,200.0	2.93	318.45	8,191.1	261.2	-231.5	-251.8	0.00	0.00	0.00
8,300.0	2.93	318.45	8,291.0	265.0	-234.9	-255.5	0.00	0.00	0.00
8,400.0	2.93	318.45	8,390.8	268.9	-238.3	-259.2	0.00	0.00	0.00
8,500.0	2.93	318.45	8,490.7	272.7	-241.7	-262.9	0.00	0.00	0.00
8,600.0	2.93	318.45	8,590.6	276.5	-245.1	-266.6	0.00	0.00	0.00
8,700.0	2.93	318.45	8,690.4	280.3	-248.5	-270.3	0.00	0.00	0.00
8,800.0	2.93	318.45	8,790.3	284.2	-251.9	-274.0	0.00	0.00	0.00
8,900.0	2.93	318.45	8,890.2	288.0	-255.3	-277.7	0.00	0.00	0.00
9,000.0	2.93	318.45	8,990.1	291.8	-258.7	-281.4	0.00	0.00	0.00
9,100.0	2.93	318.45	9,089.9	295.6	-262.1	-285.0	0.00	0.00	0.00
9,200.0	2.93	318.45	9,189.8	299.5	-265.4	-288.7	0.00	0.00	0.00
9,300.0	2.93	318.45	9,289.7	303.3	-268.8	-292.4	0.00	0.00	0.00
9,400.0	2.93	318.45	9,389.5	307.1	-272.2	-296.1	0.00	0.00	0.00
9,500.0	2.93	318.45	9,489.4	311.0	-275.6	-299.8	0.00	0.00	0.00
9,600.0	2.93	318.45	9,589.3	314.8	-279.0	-303.5	0.00	0.00	0.00
9,700.0	2.93	318.45	9,689.1	318.6	-282.4	-307.2	0.00	0.00	0.00
9,800.0	2.93	318.45	9,789.0	322.4	-285.8	-310.9	0.00	0.00	0.00
9,900.0	2.93	318.45	9,888.9	326.3	-289.2	-314.6	0.00	0.00	0.00
10,000.0	2.93	318.45	9,988.7	330.1	-292.6	-318.3	0.00	0.00	0.00
10,100.0	2.93	318.45	10,088.6	333.9	-296.0	-321.9	0.00	0.00	0.00
10,200.0	2.93	318.45	10,188.5	337.7	-299.4	-325.6	0.00	0.00	0.00
10,300.0	2.93	318.45	10,288.4	341.6	-302.7	-329.3	0.00	0.00	0.00
10,400.0	2.93	318.45	10,388.2	345.4	-306.1	-333.0	0.00	0.00	0.00
10,500.0	2.93	318.45	10,488.1	349.2	-309.5	-336.7	0.00	0.00	0.00
10,600.0	2.93	318.45	10,588.0	353.0	-312.9	-340.4	0.00	0.00	0.00

Database:	EDM 5000.14	Local Co-ordinate Reference:	Well #604H
Company:	EOG Resources - Midland	TVD Reference:	KB = 25 @ 3563.0usft
Project:	Lea County, NM (NAD 83 NME)	MD Reference:	KB = 25 @ 3563.0usft
Site:	Bandit 29 State Com	North Reference:	Grid
Well:	#604H	Survey Calculation Method:	Minimum Curvature
Wellbore:	OH		
Design:	Plan #0.1		

Planned Survey										
Measured Depth (usft)	Inclination (°)	Azimuth (°)	Vertical Depth (usft)	+N/-S (usft)	+E/-W (usft)	Vertical Section (usft)	Dogleg Rate (°/100usft)	Build Rate (°/100usft)	Turn Rate (°/100usft)	
10,700.0	2.93	318.45	10,687.8	356.9	-316.3	-344.1	0.00	0.00	0.00	
10,800.0	2.93	318.45	10,787.7	360.7	-319.7	-347.8	0.00	0.00	0.00	
10,900.0	2.93	318.45	10,887.6	364.5	-323.1	-351.5	0.00	0.00	0.00	
11,000.0	2.93	318.45	10,987.4	368.3	-326.5	-355.1	0.00	0.00	0.00	
11,100.0	2.93	318.45	11,087.3	372.2	-329.9	-358.8	0.00	0.00	0.00	
11,200.0	2.93	318.45	11,187.2	376.0	-333.3	-362.5	0.00	0.00	0.00	
11,300.0	2.93	318.45	11,287.0	379.8	-336.7	-366.2	0.00	0.00	0.00	
11,400.0	2.93	318.45	11,386.9	383.7	-340.1	-369.9	0.00	0.00	0.00	
11,500.0	2.93	318.45	11,486.8	387.5	-343.4	-373.6	0.00	0.00	0.00	
11,600.0	2.93	318.45	11,586.7	391.3	-346.8	-377.3	0.00	0.00	0.00	
11,649.4	2.93	318.45	11,636.0	393.2	-348.5	-379.1	0.00	0.00	0.00	
11,700.0	1.92	318.45	11,686.5	394.8	-349.9	-380.6	2.00	-2.00	0.00	
11,796.0	0.00	0.00	11,782.5	396.0	-351.0	-381.8	2.00	-2.00	0.00	
KOP(Bandit 29 St Com #604H)										
11,800.0	0.48	179.57	11,786.5	396.0	-351.0	-381.8	12.00	12.00	0.00	
11,825.0	3.48	179.57	11,811.5	395.1	-351.0	-380.9	12.00	12.00	0.00	
11,850.0	6.48	179.57	11,836.4	392.9	-351.0	-378.8	12.00	12.00	0.00	
11,875.0	9.48	179.57	11,861.2	389.5	-351.0	-375.3	12.00	12.00	0.00	
11,900.0	12.48	179.57	11,885.7	384.7	-350.9	-370.5	12.00	12.00	0.00	
11,925.0	15.48	179.57	11,910.0	378.7	-350.9	-364.5	12.00	12.00	0.00	
11,950.0	18.48	179.57	11,933.9	371.4	-350.8	-357.2	12.00	12.00	0.00	
11,975.0	21.48	179.57	11,957.4	362.8	-350.7	-348.7	12.00	12.00	0.00	
12,000.0	24.48	179.57	11,980.4	353.1	-350.7	-338.9	12.00	12.00	0.00	
12,025.0	27.48	179.57	12,002.8	342.1	-350.6	-328.0	12.00	12.00	0.00	
12,050.0	30.48	179.57	12,024.7	330.0	-350.5	-315.9	12.00	12.00	0.00	
12,075.0	33.48	179.57	12,045.9	316.8	-350.4	-302.7	12.00	12.00	0.00	
12,100.0	36.48	179.57	12,066.4	302.4	-350.3	-288.3	12.00	12.00	0.00	
12,125.0	39.48	179.57	12,086.1	287.1	-350.2	-273.0	12.00	12.00	0.00	
12,150.0	42.48	179.57	12,105.0	270.7	-350.0	-256.6	12.00	12.00	0.00	
12,175.0	45.48	179.57	12,123.0	253.3	-349.9	-239.3	12.00	12.00	0.00	
12,200.0	48.48	179.57	12,140.0	235.0	-349.8	-221.0	12.00	12.00	0.00	
FTP(Bandit 29 St Com #604H)										
12,225.0	51.48	179.57	12,156.1	215.9	-349.6	-201.9	12.00	12.00	0.00	
12,250.0	54.48	179.57	12,171.1	195.9	-349.5	-181.9	12.00	12.00	0.00	
12,275.0	57.48	179.57	12,185.1	175.2	-349.3	-161.2	12.00	12.00	0.00	
12,300.0	60.48	179.57	12,198.0	153.8	-349.2	-139.8	12.00	12.00	0.00	
12,325.0	63.48	179.57	12,209.7	131.7	-349.0	-117.8	12.00	12.00	0.00	
12,350.0	66.48	179.57	12,220.3	109.1	-348.8	-95.2	12.00	12.00	0.00	
12,375.0	69.48	179.57	12,229.7	85.9	-348.6	-72.0	12.00	12.00	0.00	
12,400.0	72.48	179.57	12,237.8	62.3	-348.5	-48.4	12.00	12.00	0.00	
12,425.0	75.48	179.57	12,244.7	38.2	-348.3	-24.4	12.00	12.00	0.00	
12,450.0	78.48	179.57	12,250.4	13.9	-348.1	-0.1	12.00	12.00	0.00	
12,475.0	81.48	179.57	12,254.7	-10.7	-347.9	24.5	12.00	12.00	0.00	
12,500.0	84.48	179.57	12,257.8	-35.6	-347.7	49.3	12.00	12.00	0.00	
12,525.0	87.48	179.57	12,259.5	-60.5	-347.5	74.2	12.00	12.00	0.00	
12,546.0	90.00	179.57	12,260.0	-81.4	-347.4	95.1	12.00	12.00	0.00	
12,600.0	90.00	179.57	12,260.0	-135.5	-347.0	149.1	0.00	0.00	0.00	
12,700.0	90.00	179.57	12,260.0	-235.5	-346.2	249.0	0.00	0.00	0.00	
12,800.0	90.00	179.57	12,260.0	-335.5	-345.4	348.9	0.00	0.00	0.00	
12,900.0	90.00	179.57	12,260.0	-435.5	-344.7	448.8	0.00	0.00	0.00	
13,000.0	90.00	179.57	12,260.0	-535.5	-343.9	548.7	0.00	0.00	0.00	
13,100.0	90.00	179.57	12,260.0	-635.5	-343.2	648.5	0.00	0.00	0.00	
13,200.0	90.00	179.57	12,260.0	-735.5	-342.4	748.4	0.00	0.00	0.00	
13,300.0	90.00	179.57	12,260.0	-835.5	-341.7	848.3	0.00	0.00	0.00	



Planning Report

Database:	EDM 5000.14	Local Co-ordinate Reference:	Well #604H
Company:	EOG Resources - Midland	TVD Reference:	KB = 25 @ 3563.0usft
Project:	Lea County, NM (NAD 83 NME)	MD Reference:	KB = 25 @ 3563.0usft
Site:	Bandit 29 State Com	North Reference:	Grid
Well:	#604H	Survey Calculation Method:	Minimum Curvature
Wellbore:	OH		
Design:	Plan #0.1		

Planned Survey									
Measured Depth (usft)	Inclination (°)	Azimuth (°)	Vertical Depth (usft)	+N/-S (usft)	+E/-W (usft)	Vertical Section (usft)	Dogleg Rate (°/100usft)	Build Rate (°/100usft)	Turn Rate (°/100usft)
13,400.0	90.00	179.57	12,260.0	-935.5	-340.9	948.2	0.00	0.00	0.00
13,500.0	90.00	179.57	12,260.0	-1,035.5	-340.1	1,048.1	0.00	0.00	0.00
13,600.0	90.00	179.57	12,260.0	-1,135.4	-339.4	1,148.0	0.00	0.00	0.00
13,700.0	90.00	179.57	12,260.0	-1,235.4	-338.6	1,247.9	0.00	0.00	0.00
13,800.0	90.00	179.57	12,260.0	-1,335.4	-337.9	1,347.8	0.00	0.00	0.00
13,900.0	90.00	179.57	12,260.0	-1,435.4	-337.1	1,447.7	0.00	0.00	0.00
14,000.0	90.00	179.57	12,260.0	-1,535.4	-336.3	1,547.5	0.00	0.00	0.00
14,100.0	90.00	179.57	12,260.0	-1,635.4	-335.6	1,647.4	0.00	0.00	0.00
14,200.0	90.00	179.57	12,260.0	-1,735.4	-334.8	1,747.3	0.00	0.00	0.00
14,300.0	90.00	179.57	12,260.0	-1,835.4	-334.1	1,847.2	0.00	0.00	0.00
14,400.0	90.00	179.57	12,260.0	-1,935.4	-333.3	1,947.1	0.00	0.00	0.00
14,500.0	90.00	179.57	12,260.0	-2,035.4	-332.5	2,047.0	0.00	0.00	0.00
14,600.0	90.00	179.57	12,260.0	-2,135.4	-331.8	2,146.9	0.00	0.00	0.00
14,700.0	90.00	179.57	12,260.0	-2,235.4	-331.0	2,246.8	0.00	0.00	0.00
14,800.0	90.00	179.57	12,260.0	-2,335.4	-330.3	2,346.6	0.00	0.00	0.00
14,900.0	90.00	179.57	12,260.0	-2,435.4	-329.5	2,446.5	0.00	0.00	0.00
15,000.0	90.00	179.57	12,260.0	-2,535.4	-328.7	2,546.4	0.00	0.00	0.00
15,100.0	90.00	179.57	12,260.0	-2,635.4	-328.0	2,646.3	0.00	0.00	0.00
15,200.0	90.00	179.57	12,260.0	-2,735.4	-327.2	2,746.2	0.00	0.00	0.00
15,300.0	90.00	179.57	12,260.0	-2,835.4	-326.5	2,846.1	0.00	0.00	0.00
15,400.0	90.00	179.57	12,260.0	-2,935.4	-325.7	2,946.0	0.00	0.00	0.00
15,500.0	90.00	179.57	12,260.0	-3,035.4	-325.0	3,045.9	0.00	0.00	0.00
15,600.0	90.00	179.57	12,260.0	-3,135.4	-324.2	3,145.8	0.00	0.00	0.00
15,700.0	90.00	179.57	12,260.0	-3,235.4	-323.4	3,245.6	0.00	0.00	0.00
15,800.0	90.00	179.57	12,260.0	-3,335.4	-322.7	3,345.5	0.00	0.00	0.00
15,900.0	90.00	179.57	12,260.0	-3,435.4	-321.9	3,445.4	0.00	0.00	0.00
16,000.0	90.00	179.57	12,260.0	-3,535.4	-321.2	3,545.3	0.00	0.00	0.00
16,100.0	90.00	179.57	12,260.0	-3,635.4	-320.4	3,645.2	0.00	0.00	0.00
16,200.0	90.00	179.57	12,260.0	-3,735.4	-319.6	3,745.1	0.00	0.00	0.00
16,300.0	90.00	179.57	12,260.0	-3,835.4	-318.9	3,845.0	0.00	0.00	0.00
16,400.0	90.00	179.57	12,260.0	-3,935.4	-318.1	3,944.9	0.00	0.00	0.00
16,500.0	90.00	179.57	12,260.0	-4,035.4	-317.4	4,044.8	0.00	0.00	0.00
16,600.0	90.00	179.57	12,260.0	-4,135.4	-316.6	4,144.6	0.00	0.00	0.00
16,700.0	90.00	179.57	12,260.0	-4,235.4	-315.8	4,244.5	0.00	0.00	0.00
16,800.0	90.00	179.57	12,260.0	-4,335.4	-315.1	4,344.4	0.00	0.00	0.00
16,900.0	90.00	179.57	12,260.0	-4,435.4	-314.3	4,444.3	0.00	0.00	0.00
17,000.0	90.00	179.57	12,260.0	-4,535.3	-313.6	4,544.2	0.00	0.00	0.00
17,100.0	90.00	179.57	12,260.0	-4,635.3	-312.8	4,644.1	0.00	0.00	0.00
17,200.0	90.00	179.57	12,260.0	-4,735.3	-312.0	4,744.0	0.00	0.00	0.00
17,300.0	90.00	179.57	12,260.0	-4,835.3	-311.3	4,843.9	0.00	0.00	0.00
17,400.0	90.00	179.57	12,260.0	-4,935.3	-310.5	4,943.8	0.00	0.00	0.00
17,500.0	90.00	179.57	12,260.0	-5,035.3	-309.8	5,043.6	0.00	0.00	0.00
17,600.0	90.00	179.57	12,260.0	-5,135.3	-309.0	5,143.5	0.00	0.00	0.00
17,700.0	90.00	179.57	12,260.0	-5,235.3	-308.3	5,243.4	0.00	0.00	0.00
17,800.0	90.00	179.57	12,260.0	-5,335.3	-307.5	5,343.3	0.00	0.00	0.00
17,900.0	90.00	179.57	12,260.0	-5,435.3	-306.7	5,443.2	0.00	0.00	0.00
18,000.0	90.00	179.57	12,260.0	-5,535.3	-306.0	5,543.1	0.00	0.00	0.00
18,100.0	90.00	179.57	12,260.0	-5,635.3	-305.2	5,643.0	0.00	0.00	0.00
18,200.0	90.00	179.57	12,260.0	-5,735.3	-304.5	5,742.9	0.00	0.00	0.00
18,300.0	90.00	179.57	12,260.0	-5,835.3	-303.7	5,842.8	0.00	0.00	0.00
18,400.0	90.00	179.57	12,260.0	-5,935.3	-302.9	5,942.6	0.00	0.00	0.00
18,500.0	90.00	179.57	12,260.0	-6,035.3	-302.2	6,042.5	0.00	0.00	0.00
18,600.0	90.00	179.57	12,260.0	-6,135.3	-301.4	6,142.4	0.00	0.00	0.00
18,700.0	90.00	179.57	12,260.0	-6,235.3	-300.7	6,242.3	0.00	0.00	0.00

Database:	EDM 5000.14	Local Co-ordinate Reference:	Well #604H
Company:	EOG Resources - Midland	TVD Reference:	KB = 25 @ 3563.0usft
Project:	Lea County, NM (NAD 83 NME)	MD Reference:	KB = 25 @ 3563.0usft
Site:	Bandit 29 State Com	North Reference:	Grid
Well:	#604H	Survey Calculation Method:	Minimum Curvature
Wellbore:	OH		
Design:	Plan #0.1		

Planned Survey										
Measured Depth (usft)	Inclination (°)	Azimuth (°)	Vertical Depth (usft)	+N/-S (usft)	+E/-W (usft)	Vertical Section (usft)	Dogleg Rate (°/100usft)	Build Rate (°/100usft)	Turn Rate (°/100usft)	
18,800.0	90.00	179.57	12,260.0	-6,335.3	-299.9	6,342.2	0.00	0.00	0.00	
18,900.0	90.00	179.57	12,260.0	-6,435.3	-299.1	6,442.1	0.00	0.00	0.00	
19,000.0	90.00	179.57	12,260.0	-6,535.3	-298.4	6,542.0	0.00	0.00	0.00	
19,100.0	90.00	179.57	12,260.0	-6,635.3	-297.6	6,641.9	0.00	0.00	0.00	
19,200.0	90.00	179.57	12,260.0	-6,735.3	-296.9	6,741.8	0.00	0.00	0.00	
19,300.0	90.00	179.57	12,260.0	-6,835.3	-296.1	6,841.6	0.00	0.00	0.00	
19,400.0	90.00	179.57	12,260.0	-6,935.3	-295.3	6,941.5	0.00	0.00	0.00	
19,500.0	90.00	179.57	12,260.0	-7,035.3	-294.6	7,041.4	0.00	0.00	0.00	
19,600.0	90.00	179.57	12,260.0	-7,135.3	-293.8	7,141.3	0.00	0.00	0.00	
19,700.0	90.00	179.57	12,260.0	-7,235.3	-293.1	7,241.2	0.00	0.00	0.00	
19,800.0	90.00	179.57	12,260.0	-7,335.3	-292.3	7,341.1	0.00	0.00	0.00	
19,840.7	90.00	179.57	12,260.0	-7,376.0	-292.0	7,381.8	0.00	0.00	0.00	
PBHL(Bandit 29 St Com #604H)										

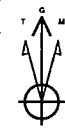
Design Targets										
Target Name	Dip Angle (°)	Dip Dir. (°)	TVD (usft)	+N/-S (usft)	+E/-W (usft)	Northing (usft)	Easting (usft)	Latitude	Longitude	
- hit/miss target										
- Shape										
KOP(Bandit 29 St Com #	0.00	0.00	11,782.5	396.0	-351.0	435,730.00	767,956.00	32° 11' 44.797 N	103° 36' 2.612 W	
- plan hits target center										
- Point										
FTP(Bandit 29 St Com #	0.00	0.00	12,260.0	346.0	-351.0	435,680.00	767,956.00	32° 11' 44.302 N	103° 36' 2.616 W	
- plan misses target center by 163.4usft at 12200.0usft MD (12140.0 TVD, 235.0 N, -349.8 E)										
- Point										
PBHL(Bandit 29 St Com	0.00	0.00	12,260.0	-7,376.0	-292.0	427,958.00	768,015.00	32° 10' 27.887 N	103° 36' 2.541 W	
- plan hits target center										
- Point										



Lea County, NM (NAD 83 NME)
Bandit 29 State Com #604H
Plan #0.1

PROJECT DETAILS: Lea County, NM (NAD 83 NME)

Geodetic System: US State Plane 1983
Datum: North American Datum 1983
Ellipsoid: GRS 1980
Zone: New Mexico Eastern Zone
System Datum: Mean Sea Level



Azimuths to Grid North
True North: -0.39°
Magnetic North: 6.38°
Magnetic Field
Strength: 47738.7mT
Dip Angle: 60.01°
Date: 3/12/2019
Model: IGRF2019

To convert a Magnetic Direction to a Grid Direction, Add 6.39°
To convert a Magnetic Direction to a True Direction, Add 6.78° East
To convert a True Direction to a Grid Direction, Subtract 0.39°

WELL DETAILS: #604H

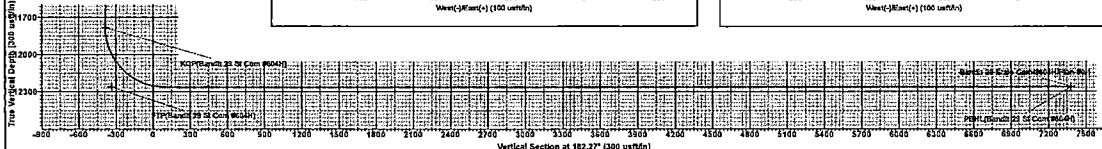
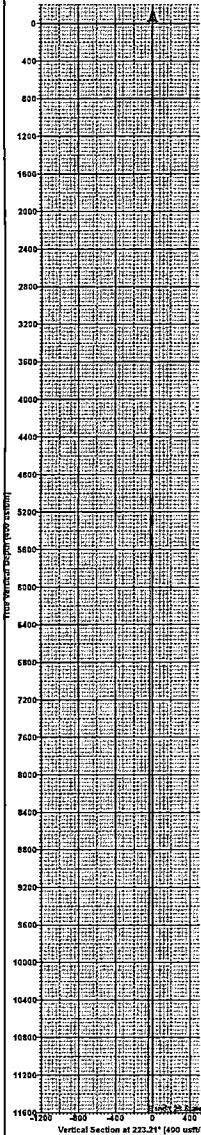
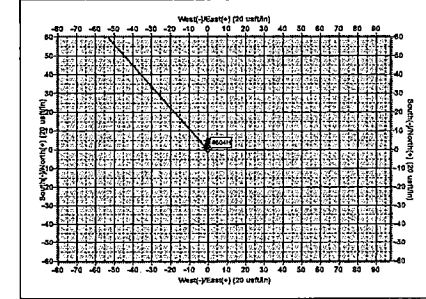
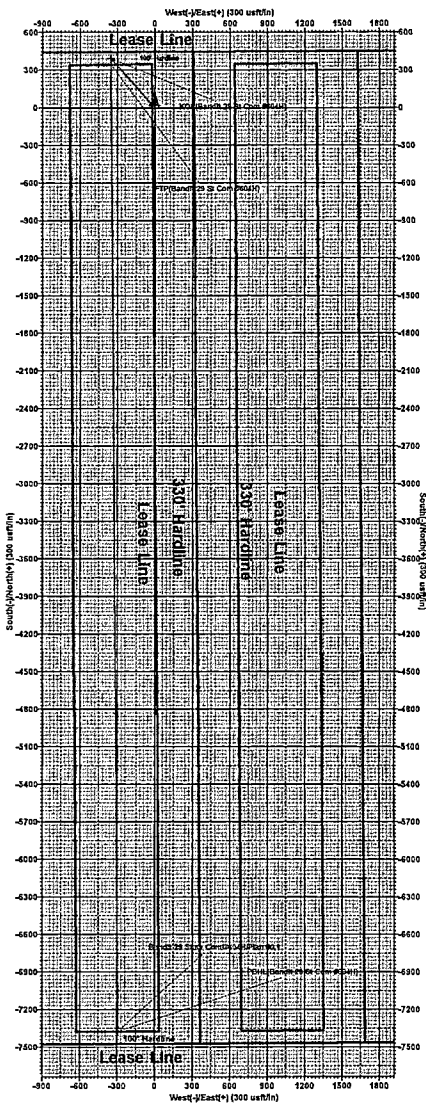
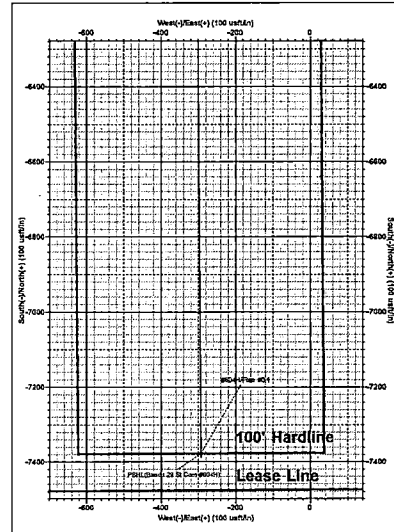
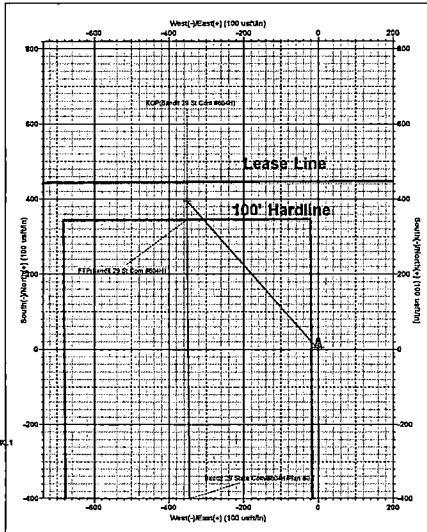
			3538.0				
			KB = 25 @ 3563.0usft				
+N/-S	+E/-W	Northing	Easting	Latitude	Longitude	Slot	
0.0	0.0	435334.00	768307.00	32° 11' 40.855 N	103° 35' 58.559 W		

SECTION DETAILS

Sec	MD	Inc	Azi	TVD	+N/-S	+E/-W	Dleg	TFace	VSect	Target
1	0.0	0.00	0.00	0.0	0.0	0.00	0.00	0.00	0.0	
2	1300.0	0.00	0.00	1300.0	0.0	0.00	0.00	0.00	0.0	
3	1446.5	2.93	318.45	1446.5	2.8	-2.5	2.00	318.45	-2.7	
4	11649.4	2.93	318.45	11636.0	393.2	-348.5	0.00	0.00	-379.1	
5	11795.0	0.00	0.00	11782.5	396.0	-351.0	2.00	180.00	-381.8	KOP(Bandit 29 St Com #604H)
6	12546.0	90.00	179.57	12260.0	-81.4	-347.4	12.00	179.57	95.1	
7	19840.7	90.00	179.57	12260.0	-7376.0	-292.0	0.00	0.00	7381.8	PBHL(Bandit 29 St Com #604H)

WELLBORE TARGET DETAILS (MAP CO-ORDINATES)

Name	TVD	+N/-S	+E/-W	Northing	Easting	Shape
KOP(Bandit 29 St Com #604H)	11782.5	396.0	-351.0	435730.00	767555.00	Point
FTF(Bandit 29 St Com #604H)	12260.0	346.0	-351.0	435890.00	767555.00	Point
PBHL(Bandit 29 St Com #604H)	12260.0	-7376.0	-292.0	427958.00	768015.00	Point



Lea County, NM (NAD 83 NME)
Bandit 29 State Com #604H
Plan #0.1