

District I
1625 N. French Dr., Hobbs, NM 88240
Phone: (575) 393-6161 Fax: (575) 393-0720
District II
811 S. First St., Artesia, NM 88210
Phone: (575) 748-1283 Fax: (575) 748-9720
District III
1000 Rio Brazos Road, Aztec, NM 87410
Phone: (505) 334-6178 Fax: (505) 334-6170
District IV
1220 S. St. Francis Dr., Santa Fe, NM 87505
Phone: (505) 476-3460 Fax: (505) 476-3462

State of New Mexico
Energy Minerals and Natural Resources
Oil Conservation Division
1220 South St. Francis Dr.
Santa Fe, NM 87505

Form C-101
Revised July 18, 2013

☐ AMENDED REPORT

APPLICATION FOR PERMIT TO DRILL, RE-ENTER, DEEPEN, PLUGBACK, OR ADD A ZONE

¹ Operator Name and Address Solaris Water Midstream, LLC 907 Tradewinds Blvd, Suite B Midland, TX 79706		² OGRID Number 371643
⁴ Property Code 326246		³ API Number 30-025-46473
⁵ Property Name MILLS 19 SWD		⁶ Well No. 1

⁷ Surface Location

UL - Lot E	Section 19	Township 22S	Range 32E	Lot Idn	Feet from 2430	N/S Line North	Feet From 1170	E/W Line West	County Lea
---------------	---------------	-----------------	--------------	---------	-------------------	-------------------	-------------------	------------------	---------------

⁸ Proposed Bottom Hole Location

UL - Lot	Section	Township	Range	Lot Idn	Feet from	N/S Line	Feet From	E/W Line	County
----------	---------	----------	-------	---------	-----------	----------	-----------	----------	--------

⁹ Pool Information

SWD-1878

Pool Name SWD; Devonian-Silurian	Pool Code 97869
-------------------------------------	--------------------

Additional Well Information

¹¹ Work Type N	¹² Well Type SWD	¹³ Cable/Rotary Rotary	¹⁴ Lease Type P	¹⁵ Ground Level Elevation 3589
¹⁶ Multiple No	¹⁷ Proposed Depth 17,457'	¹⁸ Formation Devonian/Silurian/Fusselma	¹⁹ Contractor	²⁰ Spud Date Upon Approval
Depth to Ground water		Distance from nearest fresh water well		Distance to nearest surface water

☐ We will be using a closed-loop system in lieu of lined pits

²¹ Proposed Casing and Cement Program

Type	Hole Size	Casing Size	Casing Weight/ft	Setting Depth	Sacks of Cement	Estimated TOC
Surf	18.125"	16"	84# J55	802'	600	Circ to Surf
1 st Int	14.75"	13.375"	68# FJ	5482'	1675	Circ to Surf
2 nd Int	12.25"	9.625"	35.5# HCP110	13,312'	2400	Circ to Surf
Liner	8.5"	7.625"	39# P110	13,112' - 16,207'	140	Top of Liner

Casing/Cement Program: Additional Comments

6.5" OH 16,207' - 15,457'

²² Proposed Blowout Prevention Program

Type	Working Pressure	Test Pressure	Manufacturer
Double Hydraulic/Blinds, Pipe	10000 (10M)	10000	Shaffer or Equivalent

²³ I hereby certify that the information given above is true and complete to the best of my knowledge and belief.

I further certify that I have complied with 19.15.14.9 (A) NMAC ☐ and/or 19.15.14.9 (B) NMAC ☐, if applicable.

Signature: *Bonnie Atwater*

Printed name: Bonnie Atwater

Title: Regulatory Tech

E-mail Address: bonnie.atwater@solarismidstream.com

Date: 9/13/19

Phone: 432-203-9046

OIL CONSERVATION DIVISION

Approved By:

P. G. Kautz

Title:

Approved Date: 10/29/2019

Expiration Date: 10/29/2021

Conditions of Approval Attached

DISTRICT I
1625 N. French Dr., Hobbs, NM 88240
Phone (505) 593-6101 Fax: (505) 593-0720

DISTRICT II
911 S. First St., Artesia, NM 88210
Phone (505) 748-1253 Fax: (505) 748-0720

DISTRICT III
1000 Rio Brazos Rd., Aztec, NM 87410
Phone (505) 334-6178 Fax: (505) 334-6170

DISTRICT IV
1220 S. St. Francis Dr., Santa Fe, NM 87505
Phone (505) 476-3460 Fax: (505) 476-3462

State of New Mexico
Energy, Minerals and Natural Resources Department

Form C-102
Revised August 1, 2011

Submit one copy to appropriate
District Office

OIL CONSERVATION DIVISION
1220 South St. Francis Dr.
Santa Fe, New Mexico 87505

WELL LOCATION AND ACREAGE DEDICATION PLAT

☐ AMENDED REPORT

API Number 30-025-46473	Pool Code 97869	Pool Name SWD; Devonian - Silurian
Property Code 326246	Property Name MILLS 19 SWD	Well Number 1
OGRID No. 371634	Operator Name SOLARIS WATER MIDSTREAM, LLC	Elevation 3589'

Surface Location

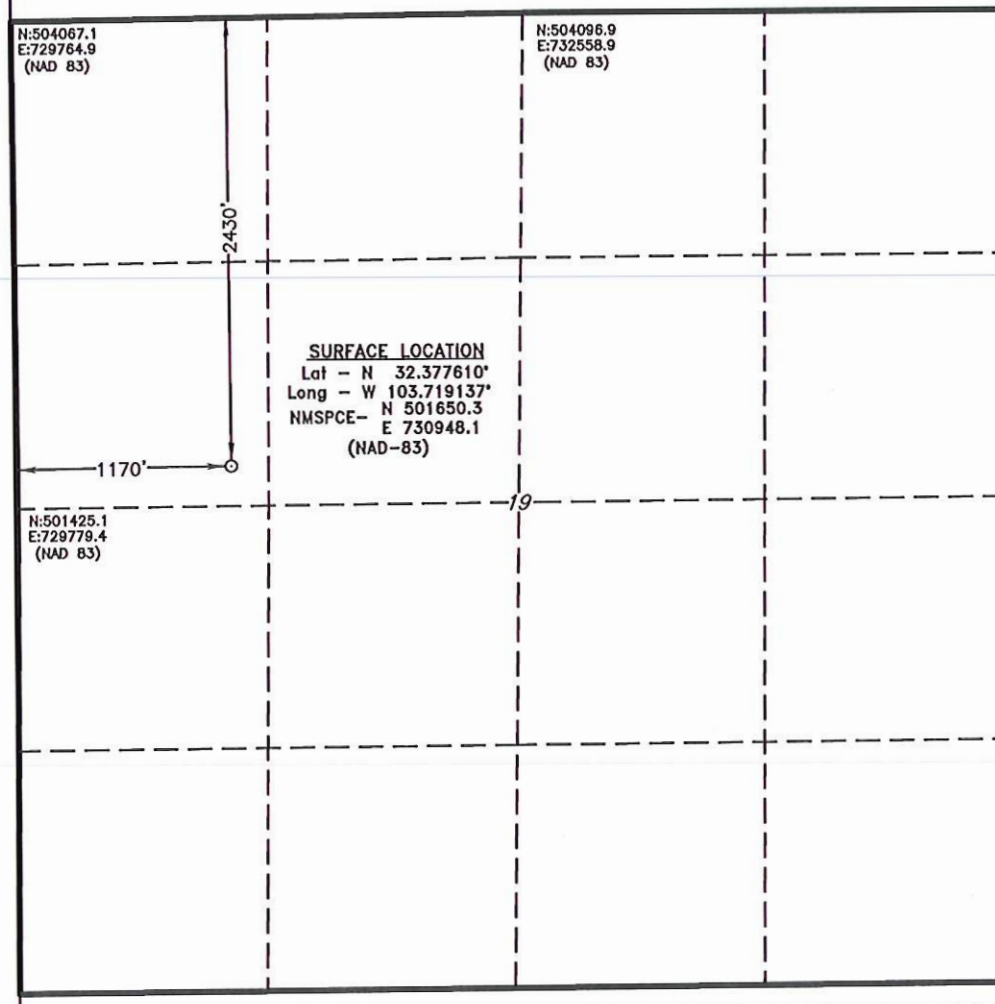
UL or lot No. E	Section 19	Township 22 S	Range 32 E	Lot Idn	Feet from the 2430	North/South line NORTH	Feet from the 1170	East/West line WEST	County LEA
--------------------	---------------	------------------	---------------	---------	-----------------------	---------------------------	-----------------------	------------------------	---------------

Bottom Hole Location If Different From Surface

UL or lot No.	Section	Township	Range	Lot Idn	Feet from the	North/South line	Feet from the	East/West line	County
---------------	---------	----------	-------	---------	---------------	------------------	---------------	----------------	--------

Dedicated Acres 5.50	Joint or Infill	Consolidation Code	Order No.
-------------------------	-----------------	--------------------	-----------

NO ALLOWABLE WILL BE ASSIGNED TO THIS COMPLETION UNTIL ALL INTERESTS HAVE BEEN CONSOLIDATED
OR A NON-STANDARD UNIT HAS BEEN APPROVED BY THE DIVISION



OPERATOR CERTIFICATION

I hereby certify that the information contained herein is true and complete to the best of my knowledge and belief, and that this organization either owns a working interest or unleased mineral interest in the land including the proposed bottom hole location or has a right to drill this well at this location pursuant to a contract with an owner of such a mineral or working interest, or to a voluntary pooling agreement or a compulsory pooling order heretofore entered by the division.

Bonnie Atwater 12.5.18
Signature Date

Bonnie Atwater
Printed Name

bonnie.atwater@solarismidstream.com
Email Address

SURVEYOR CERTIFICATION

I hereby certify that the well location shown on this plat was plotted from field notes of actual surveys made by me or under my supervision, and that the same is true and correct to the best of my belief.

NOVEMBER 13, 2018

Date Surveyed

Signature & Seal of
Professional Surveyor

Certificate No. 7977
Date Surveyed

0' 500' 1000' 1500' 2000'
SCALE: 1" = 1000'
WO Num.: 34181