

DISTRICT I  
1625 N. French Dr., Hobbs, NM 88240  
Phone (505) 593-6101 Fax: (505) 593-0720

DISTRICT II  
911 S. First St., Artesia, NM 88210  
Phone (505) 748-1253 Fax: (505) 748-0720

DISTRICT III  
1000 Rio Brazos Rd., Aztec, NM 87410  
Phone (505) 334-6178 Fax: (505) 334-6170

DISTRICT IV  
1220 S. St. Francis Dr., Santa Fe, NM 87505  
Phone (505) 476-3460 Fax: (505) 476-3462

State of New Mexico  
Energy, Minerals and Natural Resources Department

Form C-102  
Revised August 1, 2011

Submit one copy to appropriate  
District Office

OIL CONSERVATION DIVISION

1220 South St. Francis Dr.  
Santa Fe, New Mexico 87505

WELL LOCATION AND ACREAGE DEDICATION PLAT

☐ AMENDED REPORT

API Number 30-025-46473	Pool Code 97869	Pool Name SWD; Devonian - Silurian
Property Code 326246	Property Name MILLS 19 SWD	Well Number 1
OGRID No. 371634	Operator Name SOLARIS WATER MIDSTREAM, LLC	Elevation 3589'

Surface Location

UL or lot No. E	Section 19	Township 22 S	Range 32 E	Lot Idn	Feet from the 2430	North/South line NORTH	Feet from the 1170	East/West line WEST	County LEA
--------------------	---------------	------------------	---------------	---------	-----------------------	---------------------------	-----------------------	------------------------	---------------

Bottom Hole Location If Different From Surface

UL or lot No.	Section	Township	Range	Lot Idn	Feet from the	North/South line	Feet from the	East/West line	County
---------------	---------	----------	-------	---------	---------------	------------------	---------------	----------------	--------

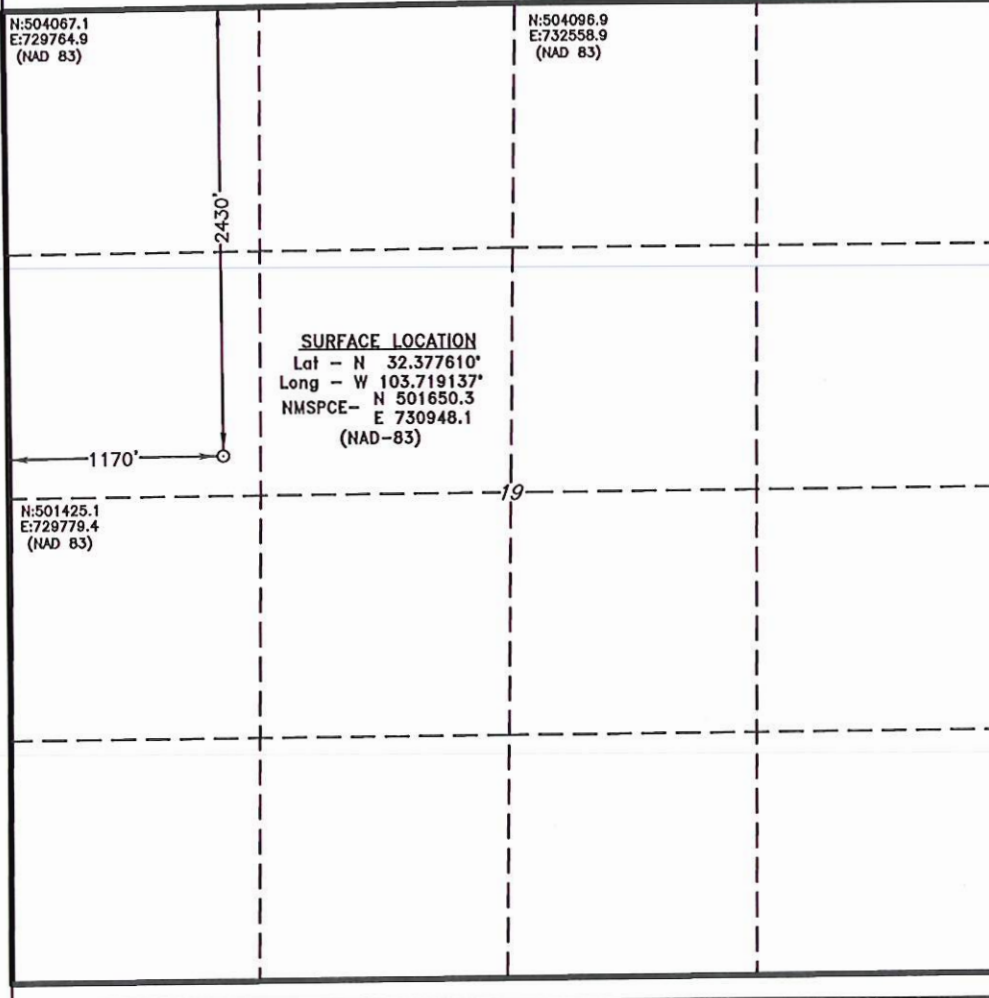
Dedicated Acres  
5.50

Joint or Infill

Consolidation Code

Order No.

NO ALLOWABLE WILL BE ASSIGNED TO THIS COMPLETION UNTIL ALL INTERESTS HAVE BEEN CONSOLIDATED  
OR A NON-STANDARD UNIT HAS BEEN APPROVED BY THE DIVISION



OPERATOR CERTIFICATION

I hereby certify that the information contained herein is true and complete to the best of my knowledge and belief, and that this organization either owns a working interest or unleased mineral interest in the land including the proposed bottom hole location or has a right to drill this well at this location pursuant to a contract with an owner of such a mineral or working interest, or to a voluntary pooling agreement or a compulsory pooling order heretofore entered by the division.

Signature: Bonnie Atwater  
Date: 12.5.18

Printed Name  
Bonnie Atwater

Email Address  
bonnie.atwater@solarismidstream.com

SURVEYOR CERTIFICATION

I hereby certify that the well location shown on this plat was plotted from field notes of actual surveys made by me or under my supervision, and that the same is true and correct to the best of my belief.

NOVEMBER 13, 2018

Date Surveyed  
Signature & Seal of  
Professional Surveyor

Certificate No. 7977  
Date Surveyed

Scale: 1" = 1000'  
WO Num.: 34181