

State of New Mexico

Energy, Minerals and Natural Resources Department

Form C-102

Revised February 10, 1994

Submit to Appropriate District Office

State Lease - 4 Copies

Fee Lease - 3 Copies

DISTRICT I

P.O. Box 1960, Hobbs, NM 88241-1960

DISTRICT II

P.O. Drawer DD, Artesia, NM 86211-0719

DISTRICT III

1000 Rio Brazos Rd., Aztec, NM 87410

DISTRICT IV

P.O. BOX 2088, SANTA FE, N.M. 87504-2088

OIL CONSERVATION DIVISION

P.O. Box 2088

Santa Fe, New Mexico 87504-2088

WELL LOCATION AND ACREAGE DEDICATION PLAT

☐ AMENDED REPORT

API Number 30-025-36224	Pool Code 98341	Pool Name WC-025 G-03 S173432L;PADDOCK
Property Code 303992	Property Name HEYWARD "32" STATE	Well Number 1
GRID No. 256512	Operator Name CML Exploration, LLC	Elevation 4075'

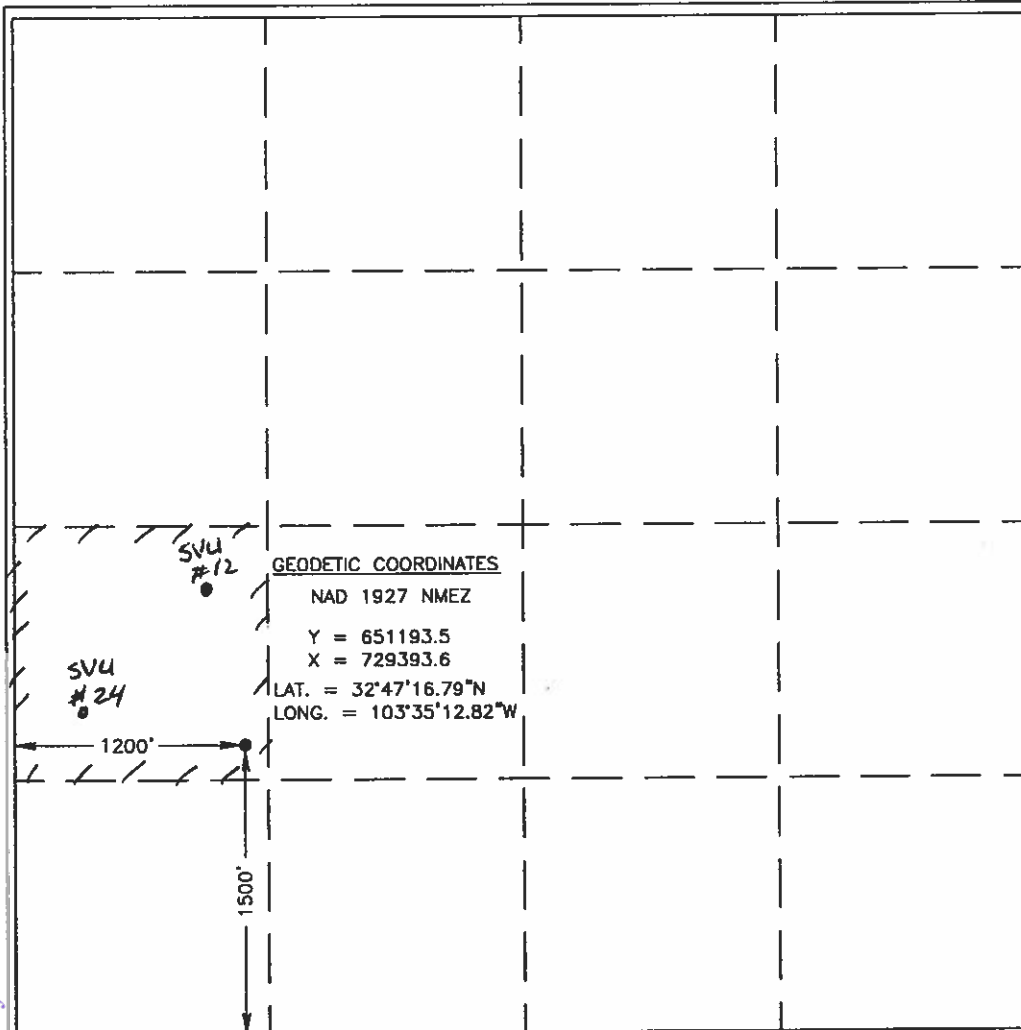
Surface Location

UL or lot No.	Section	Township	Range	Lot Idn	Feet from the	North/South line	Feet from the	East/West line	County
L	32	17-S	34-E		1500'	SOUTH	1200	WEST	LEA

Bottom Hole Location If Different From Surface

UL or lot No.	Section	Township	Range	Lot Idn	Feet from the	North/South line	Feet from the	East/West line	County
Dedicated Acres 40	Joint or Infill	Consolidation Code	Order No.						

NO ALLOWABLE WILL BE ASSIGNED TO THIS COMPLETION UNTIL ALL INTERESTS HAVE BEEN CONSOLIDATED
OR A NON-STANDARD UNIT HAS BEEN APPROVED BY THE DIVISION



OPERATOR CERTIFICATION

I hereby certify the the information
contained herein is true and complete to the
best of my knowledge and belief.

Nolan von Roeder
Signature

Nolan von Roeder
Printed Name

Engineer
Title

2/11/2020
Date

SURVEYOR CERTIFICATION

I hereby certify that the well location shown
on this plat was plotted from field notes of
actual surveys made by me or under my
supervision, and that the same is true and
correct to the best of my belief.

FEBRUARY 19, 2003

Date Surveyed AWW

Signature & Seal of
Professional Surveyor

Gary Edson 2/21/03
03.11.0208

Certificate No. RONALD J. EDSON 3239
GARY EDSON 12641