

Form C-102
Revised August 1, 2011
Submit one copy to appropriate
District Office

DISTRICT II
811 S. FIRST ST., ARTESIA, NM 88210
Phone: (575) 748-1263 Fax: (575) 748-9720

DISTRICT III
1000 RIO BRAZOS RD., AZTEC, NM 87410
Phone: (505) 334-6178 Fax: (505) 334-6170

DISTRICT IV
1220 S. ST. FRANCIS DR., SANTA FE, NM 87505
Phone: (505) 478-3460 Fax: (505) 478-3462

WELL LOCATION AND ACREAGE DEDICATION PLAT

| | | |
|-----------------------------|--|---|
| API Number 30-025- 46988 | Pool Code 98135 | Pool Name WC-025 G-09 S243310P; Upper Wolfcamp |
| Property Code 40400 | Property Name SEBASTIAN FEDERAL COM | Well Number 704H |
| OGRID No. 229137 | Operator Name COG OPERATING, LLC | Elevation 3585.8' |

Surface Location

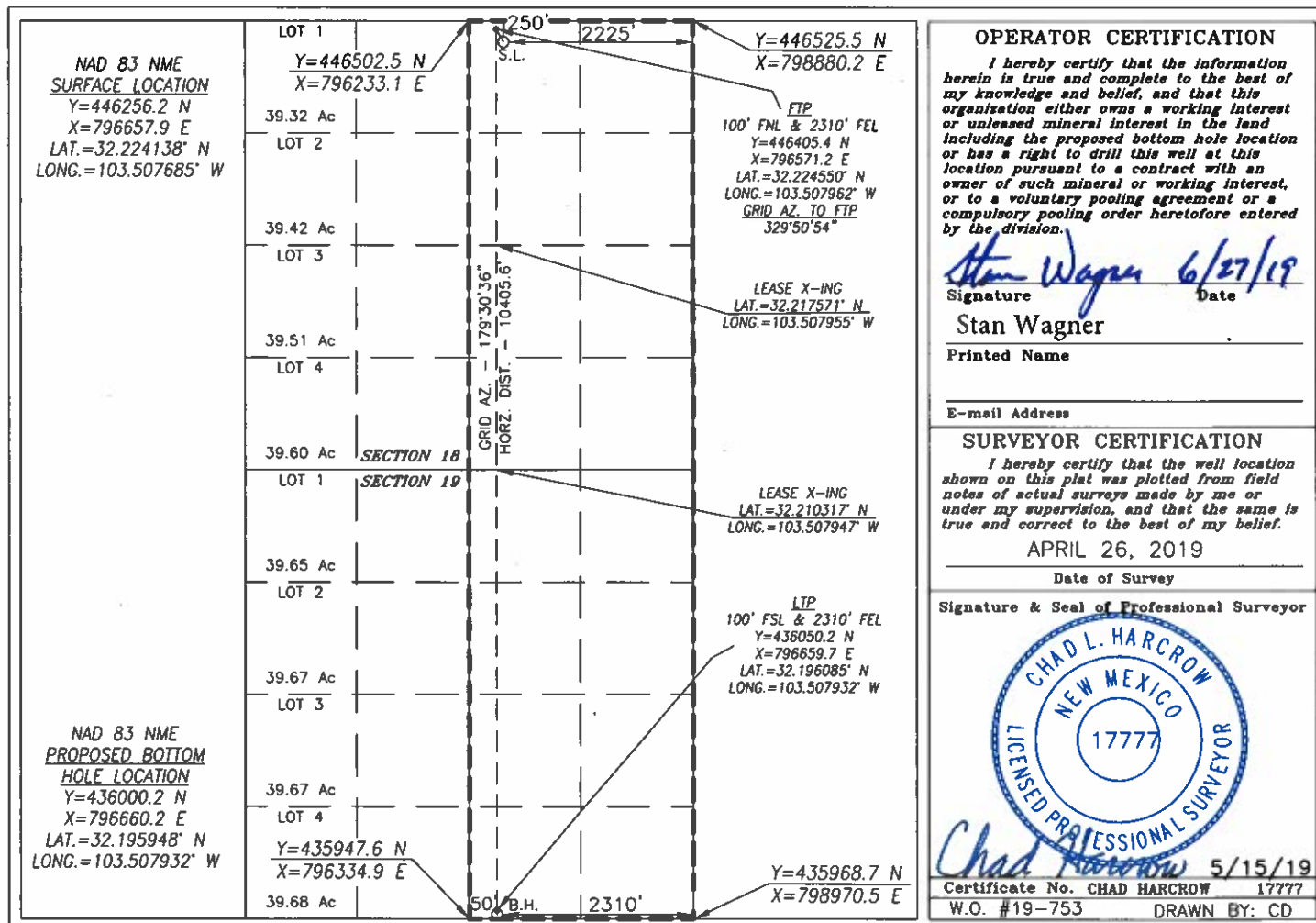
| UL or lot No. | Section | Township | Range | Lot Idn | Feet from the | North/South line | Feet from the | East/West line | County |
|---------------|---------|----------|-------|---------|---------------|------------------|---------------|----------------|--------|
| B | 18 | 24-S | 34-E | | 250 | NORTH | 2225 | EAST | LEA |

Bottom Hole Location If Different From Surface

| UL or lot No. | Section | Township | Range | Lot Idn | Feet from the | North/South line | Feet from the | East/West line | County |
|---------------|---------|----------|-------|---------|---------------|------------------|---------------|----------------|--------|
| 0 | 19 | 24-S | 34-E | | 50 | SOUTH | 2310 | EAST | LEA |

| | | | |
|-----------------|-----------------|--------------------|-----------|
| Dedicated Acres | Joint or Infill | Consolidation Code | Order No. |
| 640 | | | |

NO ALLOWABLE WILL BE ASSIGNED TO THIS COMPLETION UNTIL ALL INTERESTS HAVE BEEN CONSOLIDATED
OR A NON-STANDARD UNIT HAS BEEN APPROVED BY THE DIVISION



Intent ☒ As Drilled ☐

API #
30-025- 46988

| | | |
|-------------------|-----------------------|-------------|
| Operator Name: | Property Name: | Well Number |
| COG Operating LLC | Sebastian Federal Com | 704H |

Kick Off Point (KOP)

| | | | | | | | | | |
|----------|---------------|-----------------|--------------|-----|-----------|----------|------|----------|---------------|
| UL A | Section 18 | Township 24S | Range 34E | Lot | Feet | From N/S | Feet | From E/W | County Lea |
| Latitude | | | | | Longitude | | | | NAD 83 |

First Take Point (FTP)

| | | | | | | | | | |
|-----------------------|---------------|-----------------|--------------|-----|--------------------------|-------------------|--------------|------------------|---------------|
| UL A | Section 18 | Township 24S | Range 34E | Lot | Feet 100 | From N/S North | Feet 2310 | From E/W East | County Lea |
| Latitude 32.224550 | | | | | Longitude -103.507962 | | | | NAD 83 |

Last Take Point (LTP)

| | | | | | | | | | |
|-----------------------|---------------|-----------------|--------------|-----|--------------------------|-------------------|--------------|------------------|---------------|
| UL P | Section 19 | Township 24S | Range 34E | Lot | Feet 100 | From N/S South | Feet 2310 | From E/W East | County Lea |
| Latitude 32.196085 | | | | | Longitude -103.507932 | | | | NAD |

Is this well the defining well for the Horizontal Spacing Unit? ☐ No

Is this well an infill well? ☐ Yes

If infill is yes please provide API if available, Operator Name and well number for Defining well for Horizontal Spacing Unit.

API #
30-025-

| | | |
|-------------------|-----------------------|-------------|
| Operator Name: | Property Name: | Well Number |
| COG Operating LLC | Sebastian Federal Com | 702H |

KZ 06/29/2018