

DISTRICT I  
1625 N. FRENCH DR., HOBBS, NM 88240  
Phone: (575) 393-6161 Fax: (575) 393-0720

DISTRICT II  
611 S. FIRST ST., ARTESIA, NM 88210  
Phone: (575) 748-1283 Fax: (575) 748-8720

DISTRICT III  
1000 RIO BRAZOS RD., AZTEC, NM 87410  
Phone: (505) 334-6178 Fax: (505) 334-6170

DISTRICT IV  
1220 S. ST. FRANCIS DR., SANTA FE, NM 87505  
Phone: (505) 476-3460 Fax: (505) 476-3462

State of New Mexico  
Energy, Minerals & Natural Resources Department  
**OIL CONSERVATION DIVISION**  
1220 SOUTH ST. FRANCIS DR.  
Santa Fe, New Mexico 87505

Form C-102  
Revised August 1, 2011  
Submit one copy to appropriate  
District Office

☐ AMENDED REPORT

**WELL LOCATION AND ACREAGE DEDICATION PLAT**

API Number <b>30-025-46986</b>	Pool Code <b>96434</b>	Pool Name <b>Red Hills; Bone Spring, North</b>
Property Code <b>40400</b>	Property Name <b>SEBASTIAN FEDERAL COM</b>	Well Number <b>602H</b>
GRID No. <b>229137</b>	Operator Name <b>COG OPERATING, LLC</b>	Elevation <b>3584.9'</b>

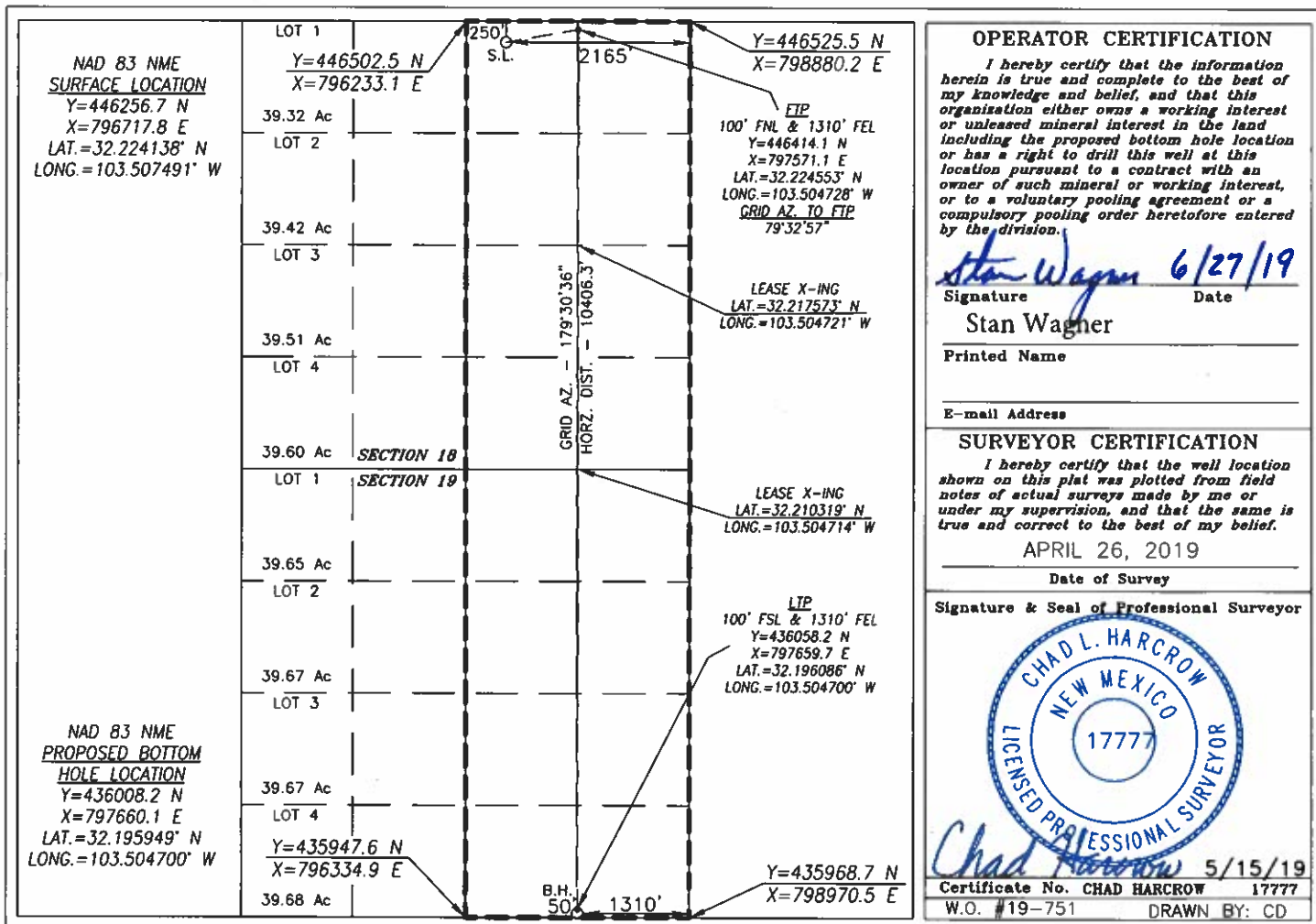
**Surface Location**

UL or lot No.	Section	Township	Range	Lot Idn	Feet from the	North/South line	Feet from the	East/West line	County
B	18	24-S	34-E		250	NORTH	2165	EAST	LEA

**Bottom Hole Location If Different From Surface**

UL or lot No.	Section	Township	Range	Lot Idn	Feet from the	North/South line	Feet from the	East/West line	County
P	19	24-S	34-E		50	SOUTH	1310	EAST	LEA
Dedicated Acres <b>640</b>	Joint or Infill	Consolidation Code	Order No.						

**NO ALLOWABLE WILL BE ASSIGNED TO THIS COMPLETION UNTIL ALL INTERESTS HAVE BEEN CONSOLIDATED  
OR A NON-STANDARD UNIT HAS BEEN APPROVED BY THE DIVISION**



Intent ☒ As Drilled ☐

API #  
30-025- 46986

Operator Name:	Property Name:	Well Number
COG Operating LLC	Sebastian Federal Com	602H

Kick Off Point (KOP)

UL A	Section 18	Township 24S	Range 34E	Lot	Feet	From N/S	Feet	From E/W	County Lea
Latitude					Longitude				NAD 83

First Take Point (FTP)

UL A	Section 18	Township 24S	Range 34E	Lot	Feet 100	From N/S North	Feet 1310	From E/W East	County Lea
Latitude 32.224553					Longitude -103.504728				NAD 83

Last Take Point (LTP)

UL P	Section 19	Township 24S	Range 34E	Lot	Feet 100	From N/S South	Feet 1310	From E/W East	County Lea
Latitude 32.196086					Longitude -103.504700				NAD

Is this well the defining well for the Horizontal Spacing Unit? ☐ Yes

Is this well an infill well? ☐ No

If infill is yes please provide API if available, Operator Name and well number for Defining well for Horizontal Spacing Unit.

API #

Operator Name:	Property Name:	Well Number

KZ 06/29/2018