

DISTRICT I
1625 N. FRENCH DR., HOBBS, NM 88240
Phone: (575) 393-6161 Fax: (575) 393-0720

DISTRICT II
811 S. FIRST ST., ARTESIA, NM 88210
Phone: (575) 748-1263 Fax: (575) 748-9720

DISTRICT III
1000 RIO BRAZOS RD., AZTEC, NM 87410
Phone: (505) 334-6178 Fax: (505) 334-6170

DISTRICT IV
1220 S. ST. FRANCIS DR., SANTA FE, NM 87505
Phone: (505) 476-3460 Fax: (505) 476-3462

State of New Mexico
Energy, Minerals & Natural Resources Department
OIL CONSERVATION DIVISION
1220 SOUTH ST. FRANCIS DR.
Santa Fe, New Mexico 87505

Form C-102
Revised August 1, 2011
Submit one copy to appropriate
District Office

☐ AMENDED REPORT

WELL LOCATION AND ACREAGE DEDICATION PLAT

| | | |
|-----------------------------------|---|---|
| API Number 30-025-47004 | Pool Code 98105 | Pool Name WC-025 G-09 S263416B;UPPER WOLFCAMP |
| Property Code 327330 | Property Name BLONDIE 15-10 FED COM | Well Number 4H |
| OGRID No. 6137 | Operator Name DEVON ENERGY PRODUCTION COMPANY, L.P. | Elevation 3272.1' |

Surface Location

| UL or lot No. | Section | Township | Range | Lot Idn | Feet from the | North/South line | Feet from the | East/West line | County |
|---------------|---------|----------|-------|---------|---------------|------------------|---------------|----------------|--------|
| F | 15 | 26-S | 34-E | | 2149 | NORTH | 1748 | WEST | LEA |

Bottom Hole Location If Different From Surface

| UL or lot No. | Section | Township | Range | Lot Idn | Feet from the | North/South line | Feet from the | East/West line | County |
|-------------------------------|-----------------|--------------------|-----------|---------|---------------|------------------|---------------|----------------|--------|
| C | 10 | 26-S | 34-E | | 20 | NORTH | 2320 | WEST | LEA |
| Dedicated Acres 240 | Joint or Infill | Consolidation Code | Order No. | | | | | | |

NO ALLOWABLE WILL BE ASSIGNED TO THIS COMPLETION UNTIL ALL INTERESTS HAVE BEEN CONSOLIDATED
OR A NON-STANDARD UNIT HAS BEEN APPROVED BY THE DIVISION

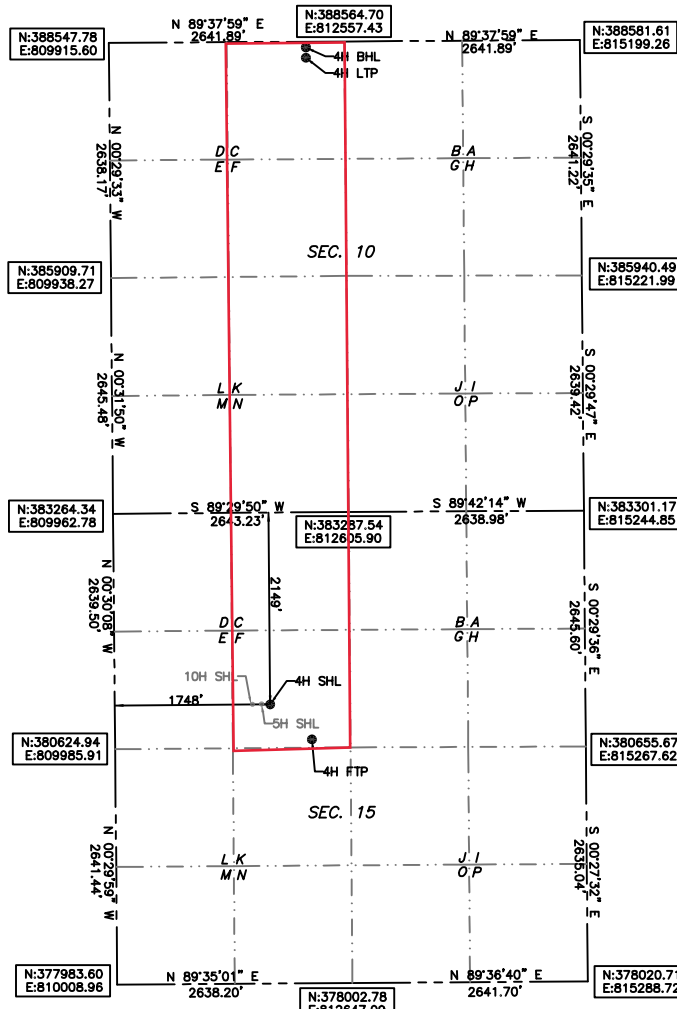
BLONDIE 15-10 FED COM 4H
ELEV: 3272.1'
LAT: 32.044805
LON: -103.460658
N: 381130.76
E: 811729.55

FIRST TAKE POINT
2546' FNL 2320' FWL SEC. 15
LAT: 32.043714
LON: -103.458811
N: 380738.43
E: 812305.01

LAST TAKE POINT
100' FNL 2320' FWL SEC. 10
LAT: 32.064946
LON: -103.458830
N: 388462.64
E: 812236.42

BOTTOM OF HOLE
20' FSL 2320' FWL SEC. 10
LAT: 32.065166
LON: -103.458830
N: 388542.64
E: 812235.73

Note: All bearings recited herein
are based on the New Mexico
State Plane Coordinate System,
NAD 83, New Mexico East Zone
3001, US Survey Feet, all
distances are grid.



OPERATOR CERTIFICATION

I hereby certify that the information herein is true and complete to the best of my knowledge and belief, and that this organization either owns a working interest or unleased mineral interest in the land including the proposed bottom hole location or has a right to drill this well at this location pursuant to a contract with an owner of such mineral or working interest, or to a voluntary pooling agreement or a compulsory pooling order heretofore entered by the division.

Rebecca Deal 6/19/2019
Signature Date

Rebecca Deal, Regulatory Analyst
Printed Name

rebecca.deal@dvn.com
E-mail Address

SURVEYOR CERTIFICATION

I hereby certify that the well location shown on this plat was plotted from field notes of actual surveys made by me or under my supervision, and that the same is true and correct to the best of my belief.

04/2019

Date of Survey

Signature & Seal of Professional Surveyor



05/29/19

Certificate No. 22404 B.L. LAMAN

DRAWN BY: JR

Intent ☐ As Drilled ☐

| | | |
|----------------|----------------|-------------|
| API # | | |
| Operator Name: | Property Name: | Well Number |

Kick Off Point (KOP)

| | | | | | | | | | |
|----------|---------|----------|-------|-----|-----------|----------|------|----------|--------|
| UL | Section | Township | Range | Lot | Feet | From N/S | Feet | From E/W | County |
| Latitude | | | | | Longitude | | | | NAD |

First Take Point (FTP)

| | | | | | | | | | |
|----------|---------|----------|-------|-----|-----------|----------|------|----------|--------|
| UL | Section | Township | Range | Lot | Feet | From N/S | Feet | From E/W | County |
| Latitude | | | | | Longitude | | | | NAD |

Last Take Point (LTP)

| | | | | | | | | | |
|----------|---------|----------|-------|-----|-----------|----------|------|----------|--------|
| UL | Section | Township | Range | Lot | Feet | From N/S | Feet | From E/W | County |
| Latitude | | | | | Longitude | | | | NAD |

Is this well the defining well for the Horizontal Spacing Unit? ☐

Is this well an infill well? ☐

If infill is yes please provide API if available, Operator Name and well number for Defining well for Horizontal Spacing Unit.

| | | |
|----------------|----------------|-------------|
| API # | | |
| Operator Name: | Property Name: | Well Number |