

District I  
1625 N. French Dr., Hobbs, NM 88240  
Phone: (575) 393-6161 Fax: (575) 393-0720  
District II  
811 S. First St., Artesia, NM 88210  
Phone: (575) 748-1283 Fax: (575) 748-9720  
District III  
1000 Rio Brazos Road, Aztec, NM 87410  
Phone: (505) 334-6178 Fax: (505) 334-6170  
District IV  
1220 S. St. Francis Dr., Santa Fe, NM 87505  
Phone: (505) 476-3460 Fax: (505) 476-3462

State of New Mexico  
Energy, Minerals & Natural Resources  
Department  
OIL CONSERVATION DIVISION  
1220 South St. Francis Dr.  
Santa Fe, NM 87505

FORM C-102  
Revised August 1, 2011  
Submit one copy to appropriate  
District Office

**OCD - HOBBS**  
**03/23/2020**  
**RECEIVED**

☐ AMENDED REPORT

**WELL LOCATION AND ACREAGE DEDICATION PLAT**

<sup>1</sup> API Number <b>30-025 -46213</b>	<sup>2</sup> Pool Code <b>96682</b>	<sup>3</sup> Pool Name <b>TRISTE DRAW; BONE Spring, EAST</b>
<sup>4</sup> Property Code <b>325 943</b>	<sup>5</sup> Property Name <b>GETTY 5 FED COM</b>	
<sup>6</sup> Well Number <b>503H</b>	<sup>7</sup> Operator Name <b>EOG RESOURCES, INC.</b>	
<sup>8</sup> OGRID No. <b>7377</b>	<sup>9</sup> Elevation <b>3438'</b>	

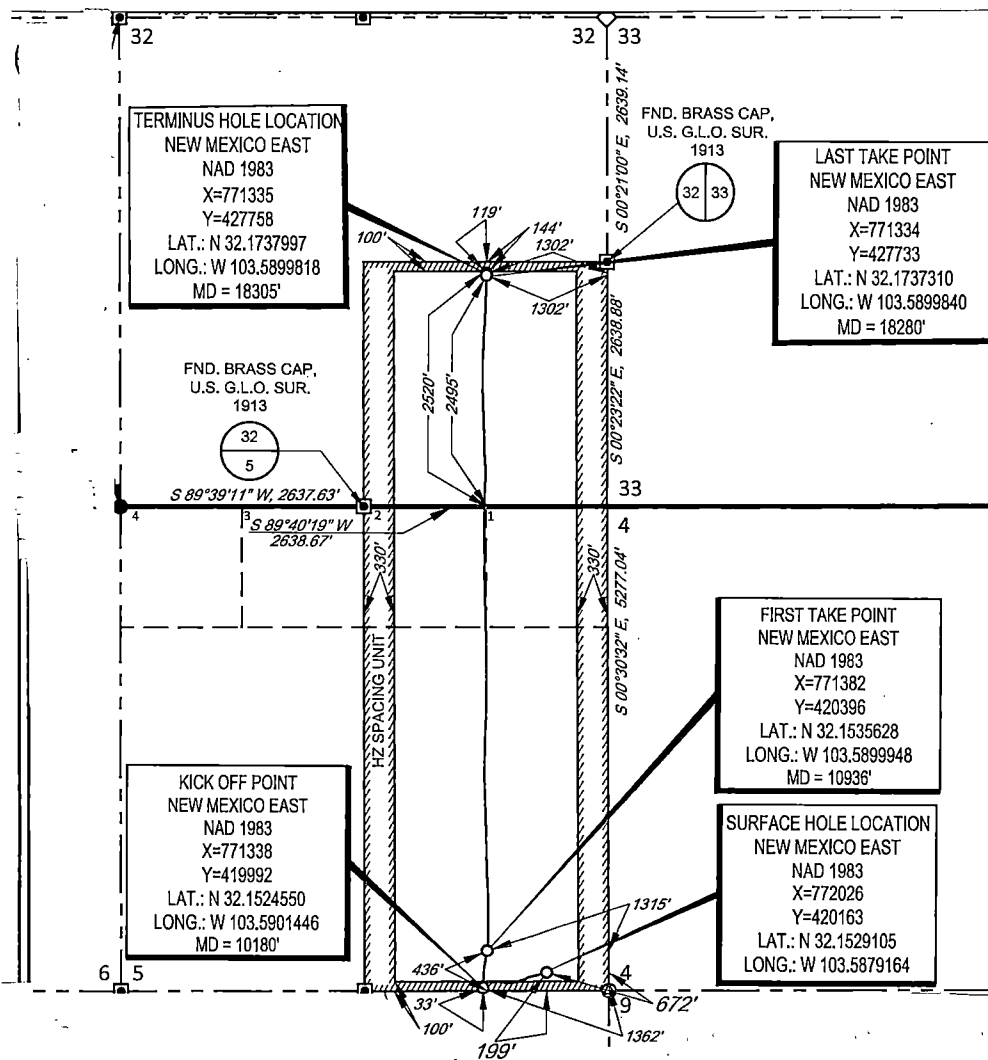
<sup>10</sup>Surface Location

UL or lot no.	Section	Township	Range	Lot Idn	Feet from the	North/South line	Feet from the	East/West line	County
<b>P</b>	<b>5</b>	<b>25-S</b>	<b>33-E</b>	<b>-</b>	<b>199'</b>	<b>SOUTH</b>	<b>672'</b>	<b>EAST</b>	<b>LEA</b>

UL or lot no.	Section	Township	Range	Lot Idn	Feet from the	North/South line	Feet from the	East/West line	County
<b>I</b>	<b>32</b>	<b>24-S</b>	<b>33-E</b>	<b>-</b>	<b>2520</b>	<b>SOUTH</b>	<b>1302'</b>	<b>EAST</b>	<b>LEA</b>

<sup>12</sup> Dedicated Acres <b>479.88</b>	<sup>13</sup> Joint or Infill	<sup>14</sup> Consolidation Code	<sup>15</sup> Order No.
--	-------------------------------	----------------------------------	-------------------------

No allowable will be assigned to this completion until all interests have been consolidated or a non-standard unit has been approved by the division.



<sup>17</sup>OPERATOR CERTIFICATION

I hereby certify that the information contained herein is true and complete to the best of my knowledge and belief, and that this organization either owns a working interest or unleased mineral interest in the land including the proposed bottom hole location or has a right to drill this well at this location pursuant to a contract with an owner of such a mineral or working interest, or to a voluntary pooling agreement or a compulsory pooling order heretofore entered by the division.

**Kay Maddox** 3/18/20  
Signature Date

**KAY MADDUX**  
Printed Name

E-mail Address

<sup>18</sup>SURVEYOR CERTIFICATION

I hereby certify that the well location shown on this plat was plotted from field notes of actual surveys made by me or under my supervision, and that the same is true to the best of my belief.

12/15/2017  
Date of Survey

**MICHAEL B. BROWN**  
Signature and Seal of Professional Surveyor

**NEW MEXICO**  
18329  
PROFESSIONAL SURVEYOR

Certificate Number

Intent ☐ As Drilled ☒ XXX

API # 30-025-46213			
Operator Name: EOG RESOURCES, INC		Property Name: GETTY 5 FEDERAL COM	Well Number 503H

Kick Off Point (KOP)

UL P	Section 05	Township 25S	Range 33E	Lot	Feet 33	From N/S SOUTH	Feet 1362	From E/W EAST	County LEA
Latitude 32.1524550					Longitude 103.5901446				NAD 1983

First Take Point (FTP)

UL P	Section 05	Township 25S	Range 33E	Lot	Feet 436	From N/S SOUTH	Feet 1315	From E/W EAST	County LEA
Latitude 32.1535628					Longitude 103.5899948				NAD 1983

Last Take Point (LTP)

UL I	Section 32	Township 24S	Range 33E	Lot	Feet 2495	From N/S SOUTH	Feet 1302	From E/W EAST	County LEA
Latitude 32.1737310					Longitude 103.5899840				NAD 1983

Is this well the defining well for the Horizontal Spacing Unit? ☒ YES

Is this well an infill well? ☐ NO

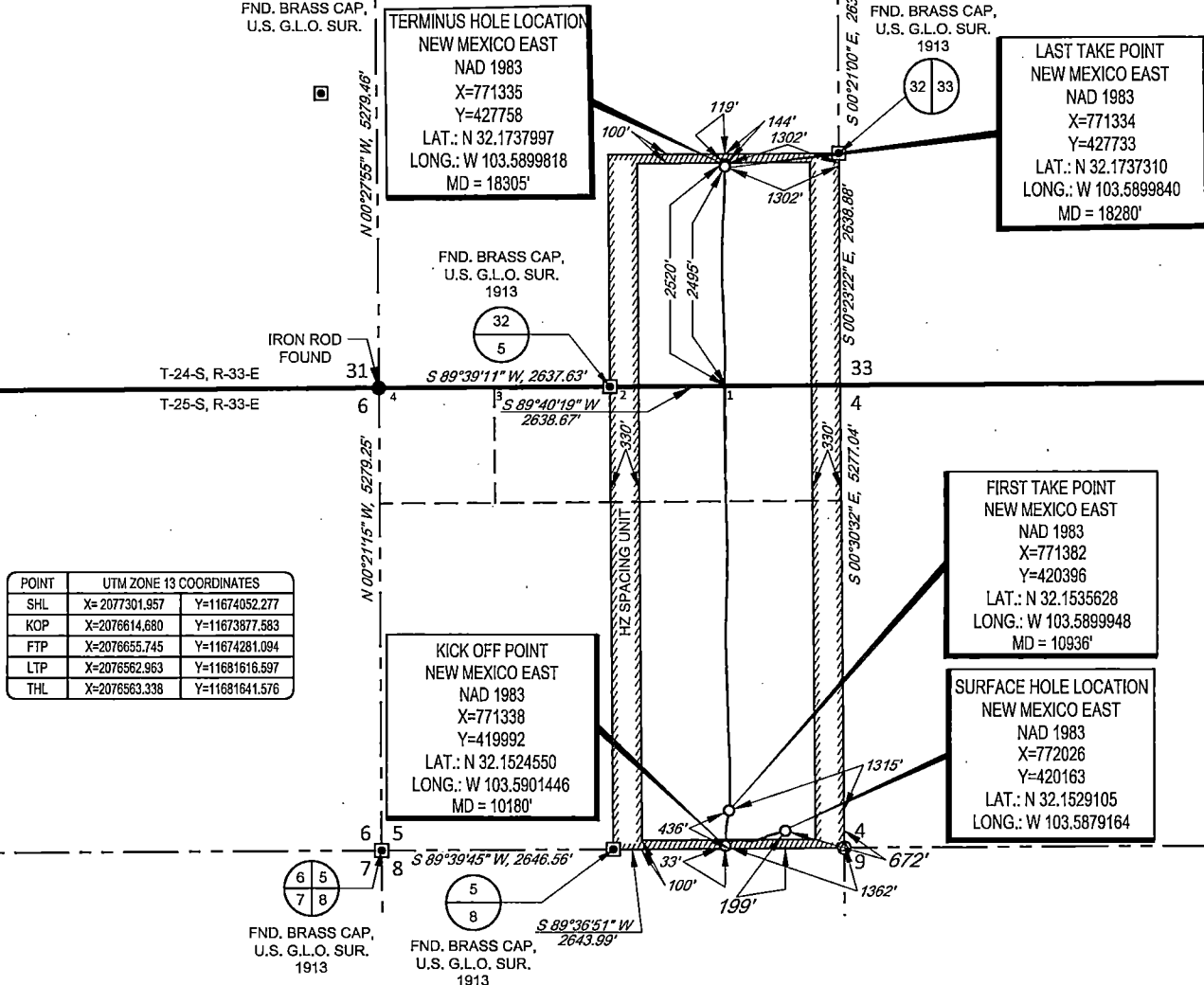
If infill is yes please provide API if available, Operator Name and well number for Defining well for Horizontal Spacing Unit.

API #			
Operator Name: EOG RESOURCES, INC		Property Name:	Well Number

KZ 06/29/2018

SECTION 5, TOWNSHIP 25-S, RANGE 33-E, N.M.P.M.  
LEA COUNTY, NEW MEXICO

SCALE: 1" = 2000'  
0' 1000' 2000'

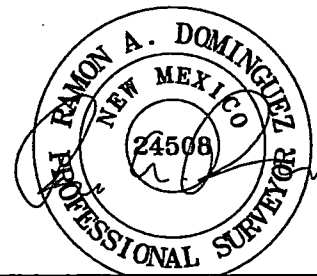


LEASE NAME & WELL NO.: GETTY 5 FED COM 503H  
SECTION 5 TWP 25-S RGE 33-E SURVEY N.M.P.M.  
COUNTY LEA STATE NM ELEVATION 3438'  
DESCRIPTION 199' FSL & 672' FEL



**TOPOGRAPHIC**  
LOYALTY INNOVATION LEGACY

1400 EVERMAN PARKWAY, Ste. 146 • FT. WORTH, TEXAS 76140  
TELEPHONE: (817) 744-7512 • FAX (817) 744-7554  
2803 NORTH BIG SPRING • MIDLAND, TEXAS 79705  
TELEPHONE: (432) 682-1653 OR (800) 767-1653 • FAX (432) 682-1743  
WWW.TOPOGRAPHIC.COM



Ramon A. Dominguez, P.S. No. 24508  
FEBRUARY 20, 2020



GETTY 5 FED COM 503H AS-COMPLETED	REVISION:		NOTES: 1. ORIGINAL DOCUMENT SIZE: 8.5" X 11" 2. ALL BEARINGS, DISTANCES, AND COORDINATE VALUES CONTAINED HEREIN ARE GRID BASED UPON THE NEW MEXICO COORDINATE SYSTEM OF 1983, EAST ZONE, U.S. SURVEY FEET. 3. THIS WELL LOCATION SHOWN HEREON HAS BEEN SURVEYED ON THE GROUND UNDER MY SUPERVISION AND PREPARED ACCORDING TO THE EVIDENCE FOUND AT THE TIME OF SURVEY, AND DATA PROVIDED BY EOG RESOURCES, INC. THIS CERTIFICATION IS MADE AND LIMITED TO THOSE PERSONS OR ENTITIES SHOWN ON THE FACE OF THIS PLAT AND IS NON-TRANSFERABLE. THIS SURVEY IS CERTIFIED FOR THIS TRANSACTION ONLY.
DATE: 02/20/2020			
FILE:AD_GETTY_5_FED_COM_503H			
DRAWN BY: A.V.F.			
SHEET: 1 OF 1			