

District I
1625 N. French Dr., Hobbs, NM 88240
Phone: (575) 393-6161 Fax: (575) 393-0720
District II
811 S. First St., Artesia, NM 8710
Phone: (575) 748-1283 Fax: (575) 748-9720
District III
1000 Rio Brazos Road, Aztec, NM 87410
Phone: (505) 334-6178 Fax: (505) 334-6170
District IV
1220 S. St. Francis Dr., Santa Fe, NM 87505
Phone: (505) 476-3460 Fax: (505) 476-3462

State of New Mexico
Energy, Minerals & Natural Resources
Department
OIL CONSERVATION DIVISION
1220 South St. Francis Dr.
Santa Fe, NM 87505

FORM C-102
Revised August 1, 2011
Submit one copy to appropriate
District Office

OCD - HOBBS
03/23/2020
RECEIVED

☐ AMENDED REPORT

WELL LOCATION AND ACREAGE DEDICATION PLAT

¹ API Number 30-025-46214	² Pool Code 96682	³ Pool Name TRISTE DRAW; BONE Spring, East
⁴ Property Code 325943	⁵ Property Name GETTY 5 FED COM	
⁶ OGRID No. 7377	⁷ Operator Name EOG RESOURCES, INC.	⁸ Well Number 50414
		⁹ Elevation 3443'

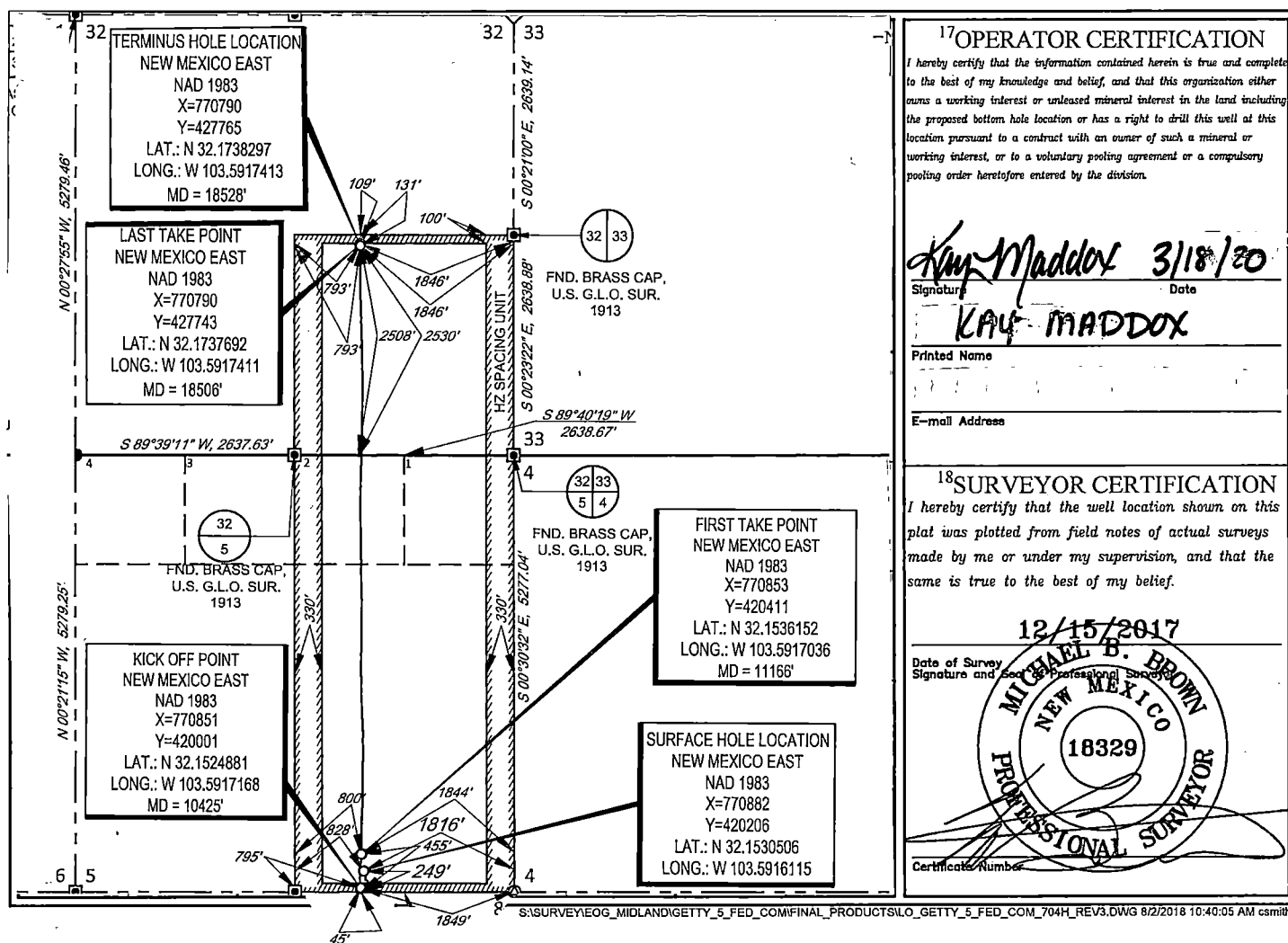
¹⁰Surface Location

UL or lot no.	Section	Township	Range	Lot Idn	Feet from the	North/South line	Feet from the	East/West line	County
0	5	25-S	33-E	-	249'	SOUTH	1816'	EAST	LEA

UL or lot no.	Section	Township	Range	Lot Idn	Feet from the	North/South line	Feet from the	East/West line	County
J	32	24-S	33-E	-	2530	SOUTH	1846	EAST	LEA

¹² Dedicated Acres 479.88	¹³ Joint or Infill	¹⁴ Consolidation Code	¹⁵ Order No.
--	-------------------------------	----------------------------------	-------------------------

No allowable will be assigned to this completion until all interests have been consolidated or a non-standard unit has been approved by the division.



Intent ☐ As Drilled ☒ XXX

API # 30-025-46214			
Operator Name: EOG RESOURCES, INC		Property Name: GETTY 5 FEDERAL COM	Well Number 504H

Kick Off Point (KOP)

UL O	Section 05	Township 25S	Range 33E	Lot	Feet 45	From N/S SOUTH	Feet 1849	From E/W EAST	County LEA
Latitude 32.1524881					Longitude 103.5917168				NAD 1983

First Take Point (FTP)

UL O	Section 05	Township 25S	Range 33E	Lot	Feet 455	From N/S SOUTH	Feet 1844	From E/W EAST	County LEA
Latitude 32.1536152					Longitude 103.5917036				NAD 1983

Last Take Point (LTP)

UL J	Section 32	Township 24S	Range 33E	Lot	Feet 2508	From N/S SOUTH	Feet 1846	From E/W EAST	County LEA
Latitude 32.1737692					Longitude 103.5917411				NAD 1983

Is this well the defining well for the Horizontal Spacing Unit? ☐ NO

Is this well an infill well? ☐ YES

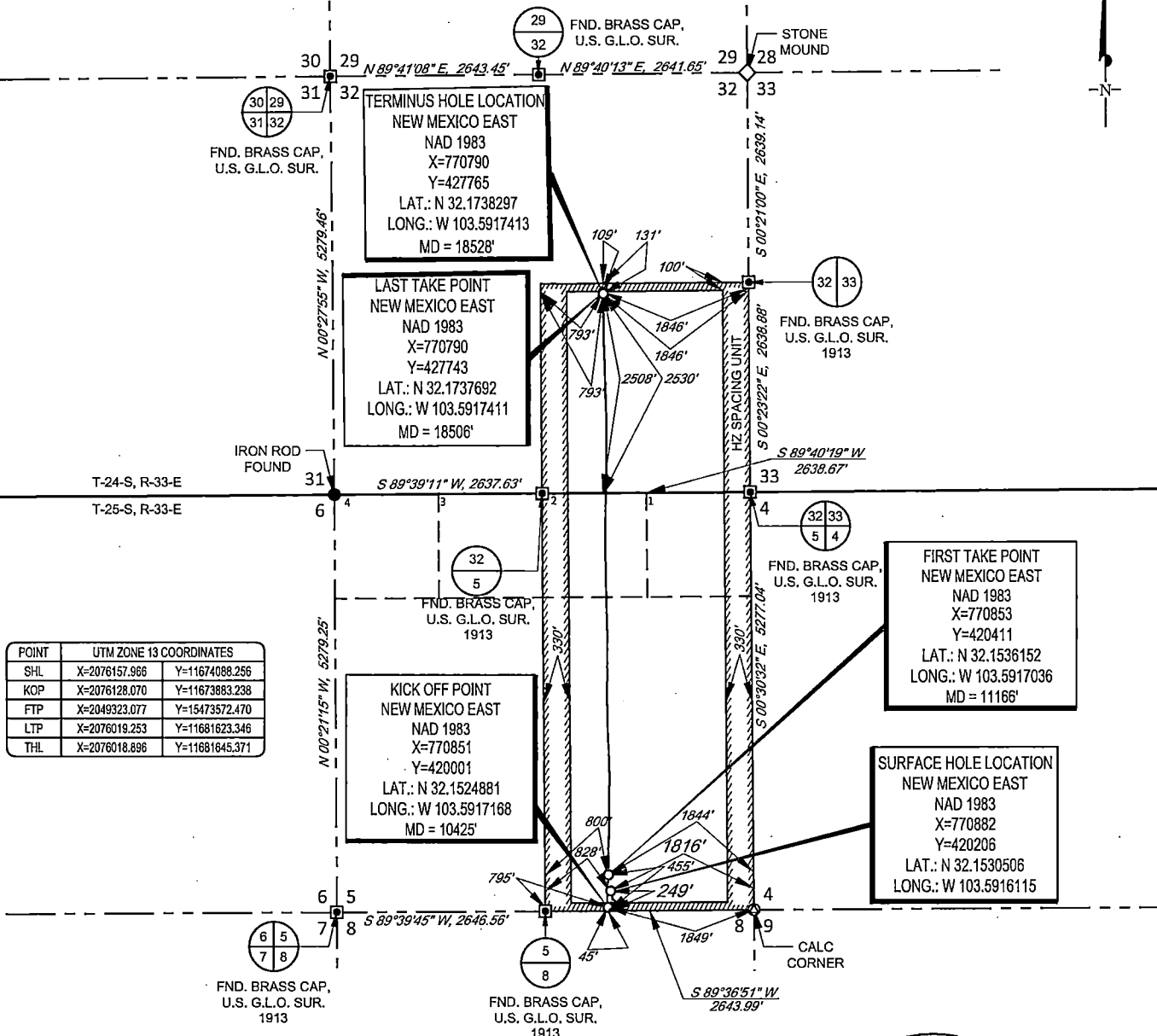
If infill is yes please provide API if available, Operator Name and well number for Defining well for Horizontal Spacing Unit.

API # 30-025-46213			
Operator Name: EOG RESOURCES, INC		Property Name: GETTY 5 FEDERAL COM	Well Number #503H

KZ 06/29/2018

SECTION 5, TOWNSHIP 25-S, RANGE 33-E, N.M.P.M.
LEA COUNTY, NEW MEXICO

SCALE: 1" = 2000'
0' 1000' 2000'

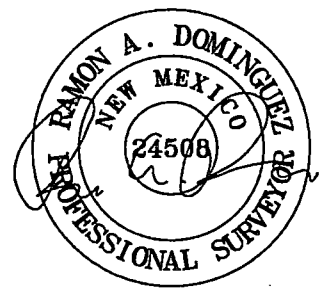


POINT	UTM ZONE 13 COORDINATES
SHL	X=2076157.966 Y=11674088.256
KOP	X=2076128.070 Y=11673883.238
FTP	X=2049323.077 Y=15473572.470
LTP	X=2076019.253 Y=11681623.346
THL	X=2076018.896 Y=11681645.371

LEASE NAME & WELL NO.: GETTY 5 FED COM 504H
 SECTION 5 TWP 25-S RGE 33-E SURVEY N.M.P.M.
 COUNTY LEA STATE NM ELEVATION 3443'
 DESCRIPTION 249' FSL & 1816' FEL

TOPOGRAPHIC
LOYALTY INNOVATION LEGACY

1400 EVERMAN PARKWAY, Ste. 146 • FT. WORTH, TEXAS 76140
 TELEPHONE: (817) 744-7512 • FAX (817) 744-7554
 2903 NORTH BIG SPRING • MIDLAND, TEXAS 79705
 TELEPHONE: (432) 682-1653 OR (800) 767-1653 • FAX (432) 682-1743
 WWW.TOPOGRAPHIC.COM



Ramon A. Dominguez, P.S. No. 24508
OCTOBER 01, 2019

Geog resources, Inc.

GETTY 5 FED COM 504H AS-COMplete	REVISION:	NOTES:
DATE: 02/19/2020		1. ORIGINAL DOCUMENT SIZE: 8.5" X 11"
FILE:AD_GETTY_5_FED_COM_504H		2. ALL BEARINGS, DISTANCES, AND COORDINATE VALUES CONTAINED HEREIN ARE GRID BASED UPON THE NEW MEXICO COORDINATE SYSTEM OF 1983, EAST ZONE, U.S. SURVEY FEET.
DRAWN BY: TRG		3. THIS WELL LOCATION SHOWN HEREON HAS BEEN SURVEYED ON THE GROUND UNDER MY SUPERVISION AND PREPARED ACCORDING TO THE EVIDENCE FOUND AT THE TIME OF SURVEY, AND DATA PROVIDED BY EOG RESOURCES, INC. THIS CERTIFICATION IS MADE AND LIMITED TO THOSE PERSONS OR ENTITIES SHOWN ON THE FACE OF THIS PLAT AND IS NON-TRANSFERABLE. THIS SURVEY IS CERTIFIED FOR THIS TRANSACTION ONLY.
SHEET: 1 OF 1		4. ADJOINER INFORMATION SHOWN FOR INFORMATIONAL PURPOSES ONLY.