

District I  
1625 N. French Dr., Hobbs, NM 88240  
Phone: (575) 393-6161 Fax: (575) 393-0720  
District II  
811 S. First St., Artesia, NM 88210  
Phone: (575) 748-1283 Fax: (575) 748-9720  
District III  
1000 Rio Brazos Road, Aztec, NM 87410  
Phone: (505) 334-6178 Fax: (505) 334-6170  
District IV  
1220 S. St. Francis Dr., Santa Fe, NM 87505  
Phone: (505) 476-3460 Fax: (505) 476-3462

State of New Mexico  
Energy, Minerals & Natural Resources Department  
OIL CONSERVATION DIVISION  
1220 South St. Francis Dr.  
Santa Fe, NM 87505

Form C-102  
Revised August 1, 2011  
Submit one copy to appropriate  
District Office

OCD - HOBBS  
03/24/2020  
RECEIVED

☐ AMENDED REPORT

WELL LOCATION AND ACREAGE DEDICATION PLAT

<sup>1</sup> API Number 30-025-47027	<sup>2</sup> Pool Code 97958	<sup>3</sup> Pool Name WC-025 G-08 S233528D;LWR BONE SPRING
<sup>4</sup> Property Code 327347	<sup>5</sup> Property Name BRECKENRIDGE FED COM	<sup>6</sup> Well Number 302H
<sup>7</sup> OGRID No. 373910	<sup>8</sup> Operator Name FRANKLIN MOUNTAIN ENERGY LLC	<sup>9</sup> Elevation 3374.4'

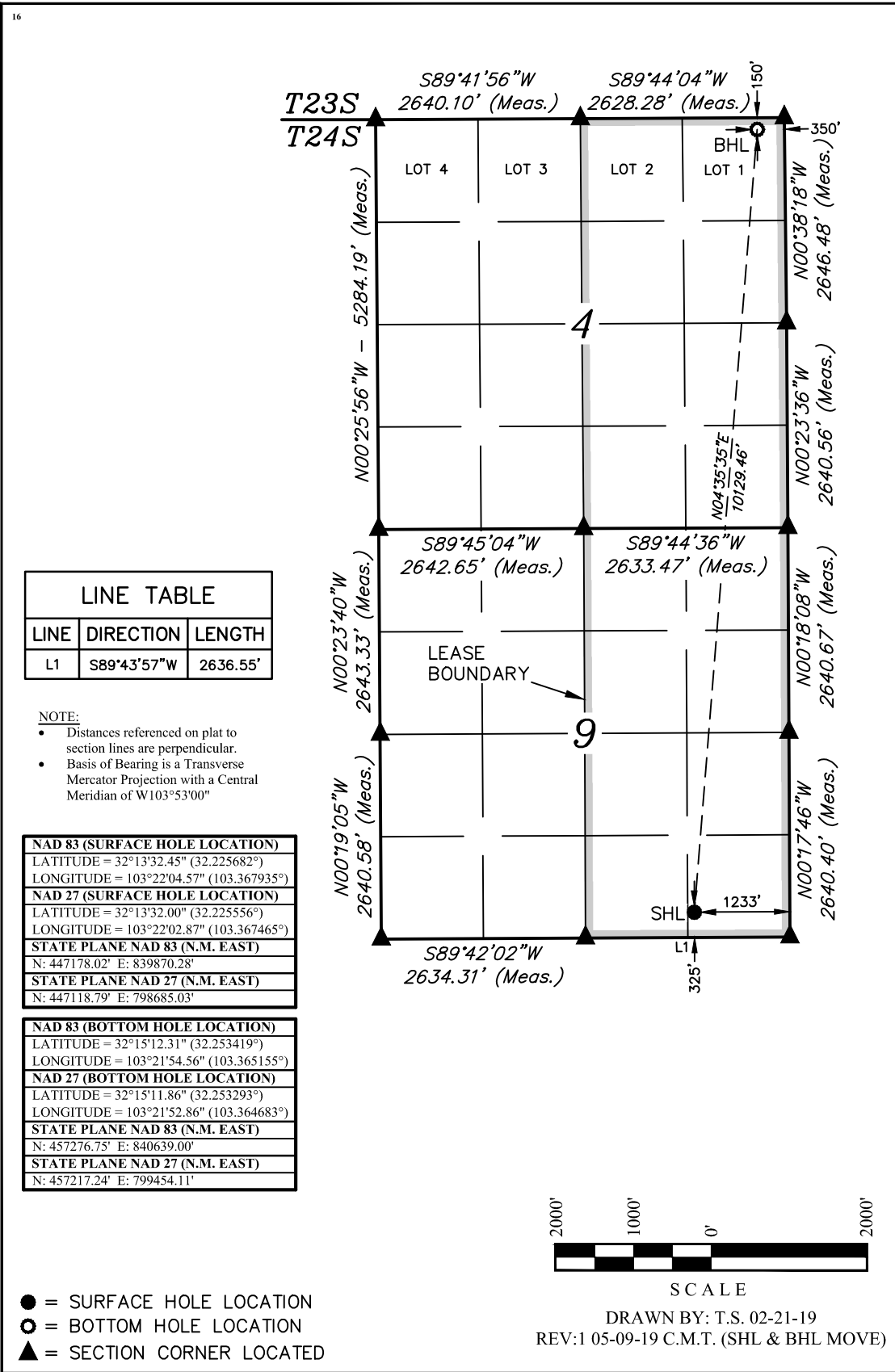
<sup>10</sup> Surface Location

UL or lot no. P	Section 9	Township 24S	Range 35E	Lot Idn	Feet from the 325	North/South line SOUTH	Feet from the 1233	East/West line EAST	County LEA
--------------------	--------------	-----------------	--------------	---------	----------------------	---------------------------	-----------------------	------------------------	---------------

<sup>11</sup> Bottom Hole Location If Different From Surface

UL or lot no. 1	Section 4	Township 24S	Range 35E	Lot Idn	Feet from the 150	North/South line NORTH	Feet from the 350	East/West line EAST	County LEA
<sup>12</sup> Dedicated Acres 320.19	<sup>13</sup> Joint or Infill	<sup>14</sup> Consolidation Code	<sup>15</sup> Order No.						

No allowable will be assigned to this completion until all interests have been consolidated or a non-standard unit has been approved by the division.



**<sup>17</sup> OPERATOR CERTIFICATION**

I hereby certify that the information contained herein is true and complete to the best of my knowledge and belief, and that this organization either owns a working interest or unleased mineral interest in the land including the proposed bottom hole location or has a right to drill this well at this location pursuant to a contract with an owner of such a mineral or working interest, or to a voluntary pooling agreement or a compulsory pooling order heretofore entered by the division.

Signature: Shelly Albrecht Date: 5/24/2019

Printed Name: Shelly Albrecht

E-mail Address: salbrecht@fmellc.com

**<sup>18</sup> SURVEYOR CERTIFICATION**

I hereby certify that the well location shown on this plat was plotted from field notes of actual surveys made by me or under my supervision, and that the same is true and correct to the best of my belief.

May 7, 2019

Date of Survey: 23782  
Signature and Seal of Professional Surveyor: Paul Buchele

Certificate Number: 05-09-19