

DISTRICT I
1625 N. FRENCH DR., HOBBS, NM 88240
Phone: (505) 393-6161 Fax: (505) 393-0720

DISTRICT II
811 S. FIRST ST., ARTESIA, NM 88210
Phone: (505) 748-1283 Fax: (505) 748-9720

DISTRICT III
1000 RIO BRAZOS RD., AZTEC, NM 87410
Phone: (505) 334-6178 Fax: (505) 334-6170

DISTRICT IV
1220 S. ST. FRANCIS DR., SANTA FE, NM 87505
Phone: (505) 476-3460 Fax: (505) 476-3462

State of New Mexico
Energy, Minerals & Natural Resources Department
OIL CONSERVATION DIVISION
1220 SOUTH ST. FRANCIS DR.
Santa Fe, New Mexico 87505

Form C-102
Revised August 1, 2011
Submit one copy to appropriate
District Office

☐ AMENDED REPORT

WELL LOCATION AND ACREAGE DEDICATION PLAT

API Number 30-025-47053	Pool Code 96689	Pool Name BRINNINSTOOL;WOLFCAMP, WEST
Property Code 327369	Property Name DANGER NOODLE 29-20 FED COM	Well Number 7H
OGRID No. 6137	Operator Name DEVON ENERGY PRODUCTION COMPANY, L.P.	Elevation 3681.0'

Surface Location

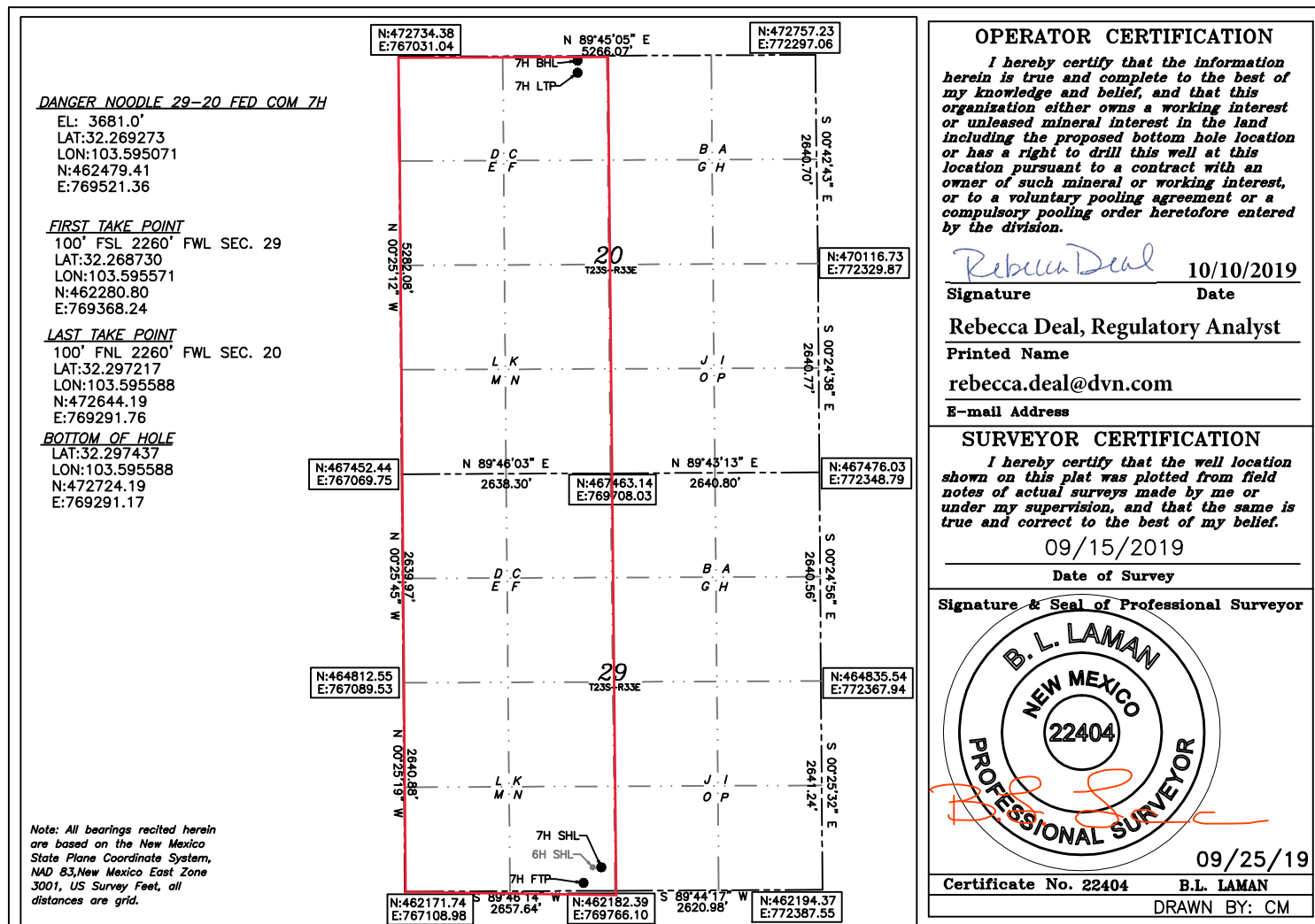
UL or lot No.	Section	Township	Range	Lot Idn	Feet from the	North/South line	Feet from the	East/West line	County
N	29	23-S	33-E		298	SOUTH	2415	WEST	LEA

Bottom Hole Location If Different From Surface

UL or lot No.	Section	Township	Range	Lot Idn	Feet from the	North/South line	Feet from the	East/West line	County
C	20	23-S	33-E		20	NORTH	2260	WEST	LEA

Dedicated Acres 640	Joint or Infill	Consolidation Code	Order No.
-------------------------------	-----------------	--------------------	-----------

**NO ALLOWABLE WILL BE ASSIGNED TO THIS COMPLETION UNTIL ALL INTERESTS HAVE BEEN CONSOLIDATED
OR A NON-STANDARD UNIT HAS BEEN APPROVED BY THE DIVISION**



Intent ☒ As Drilled ☐

API #
30-025-47053

Operator Name: DEVON ENERGY PRODUCTION COMPANY, LP.	Property Name: DANGER NOODLE 29-20 FED COM	Well Number 7H
---	--	--------------------------

Kick Off Point (KOP)

UL	Section 29	Township 23S	Range 33E	Lot	Feet 50	From N/S FSL	Feet 2260	From E/W FWL	County LEA
Latitude 32.268594					Longitude -103.595578				NAD 83

First Take Point (FTP)

UL N	Section 29	Township 23-S	Range 33-E	Lot	Feet 100	From N/S SOUTH	Feet 2260	From E/W WEST	County LEA
Latitude 32.268730					Longitude 103.595571				NAD 83

Last Take Point (LTP)

UL C	Section 20	Township 23-S	Range 33-E	Lot	Feet 100	From N/S NORTH	Feet 2260	From E/W WEST	County LEA
Latitude 32.297217					Longitude 103.595588				NAD 83

Is this well the defining well for the Horizontal Spacing Unit?

Is this well an infill well?

If infill is yes please provide API if available, Operator Name and well number for Defining well for Horizontal Spacing Unit.

API #

Operator Name: DEVON ENERGY PRODUCTION CO., L.P.	Property Name: DANGER NOODLE 29-20 FED COM	Well Number 6H
--	--	--------------------------

KZ 06/29/2018