

State of New Mexico
Energy, Minerals & Natural Resources Department
OIL CONSERVATION DIVISION
1220 South St. Francis Dr.
Santa Fe, NM 87505

☐ AMENDED REPORT

WELL LOCATION AND ACREAGE DEDICATION PLAT

¹ API Number 30-025-47061	² Pool Code 2205	³ Pool Name ANTELOPE RIDGE;BONE SPRING, NORTH
⁴ Property Code 326211	⁵ Property Name PAC-MAN 36 FED COM	⁶ Well Number #301H
⁷ OGRID No. 372165	⁸ Operator Name CENTENNIAL RESOURCE PRODUCTION, LLC	⁹ Elevation 3386.0'

¹⁰Surface Location

UL or lot no.	Section	Township	Range	Lot Idn	Feet from the	North/South line	Feet from the	East/West line	County
4	1	23S	34E		450	NORTH	1274	WEST	LEA

¹¹ Bottom Hole Location If Different From Surface

UL or lot no. N	Section 12	Township 23S	Range 34E	Lot Idn	Feet from the 100	North/South line SOUTH	Feet from the 2158	East/West line WEST	County LEA
¹² Dedicated Acres 160		¹³ Joint or Infill		¹⁴ Consolidation Code		¹⁵ Order No.			

No allowable will be assigned to this completion until all interests have been consolidated or a non-standard unit has been approved by the division.

NAD 83 (SURFACE HOLE LOCATION)
LATITUDE = 32°20'22.81" (32.339670°)
LONGITUDE = 103°25'41.50" (103.428194°)
STATE PLANE NAD 83 (N.M. EAST)
Y: 488485.36' X: 820885.67'
UTM, NAD 83 (ZONE 13)
Y: 11742667.35' X: 2125729.22'

NAD 83 (PP/FTP)
LATITUDE = 32°20'26.27" (32.340632°)
LONGITUDE = 103°25'31.20" (103.425333°)
STATE PLANE NAD 83 (N.M. EAST)
Y: 488842.60' X: 821766.35'
UTM, NAD 83 (ZONE 13)
Y: 11743030.02' X: 2126607.55'

NAD 83 (LTP/BHL)
LATITUDE = 32°18'43.72" (32.312144°)
LONGITUDE = 103°25'31.16" (103.425323°)
STATE PLANE NAD 83 (N.M. EAST)
Y: 478478.75' X: 821857.23'
UTM, NAD 83 (ZONE 13)
Y: 11732668.27' X: 2126762.91'

LINE TABLE		
LINE	DIRECTION	LENGTH
L1	N68°09'40"E	950.53'

17 OPERATOR CERTIFICATION

I hereby certify that the information contained herein is true and complete to the best of my knowledge and belief, and that this organization either owns a working interest or unleased mineral interest in the land including the proposed bottom hole location or has a right to drill this well at this location pursuant to a contract with an owner of such a mineral or working interest, or to a voluntary pooling agreement or a compulsory pooling order heretofore entered by the division.

Signature: K. S. Date: 6/20/19

Signature _____

Date _____

Kanicia Schlichting

Printed Name _____

Kanicia.schlichting@cdevinc.com

E-mail Address

18 SURVEYOR CERTIFICATION

I hereby certify that the well location shown on this plat was plotted from field notes of actual surveys made by me or under my supervision, and that the same is true and correct to the best of my belief.

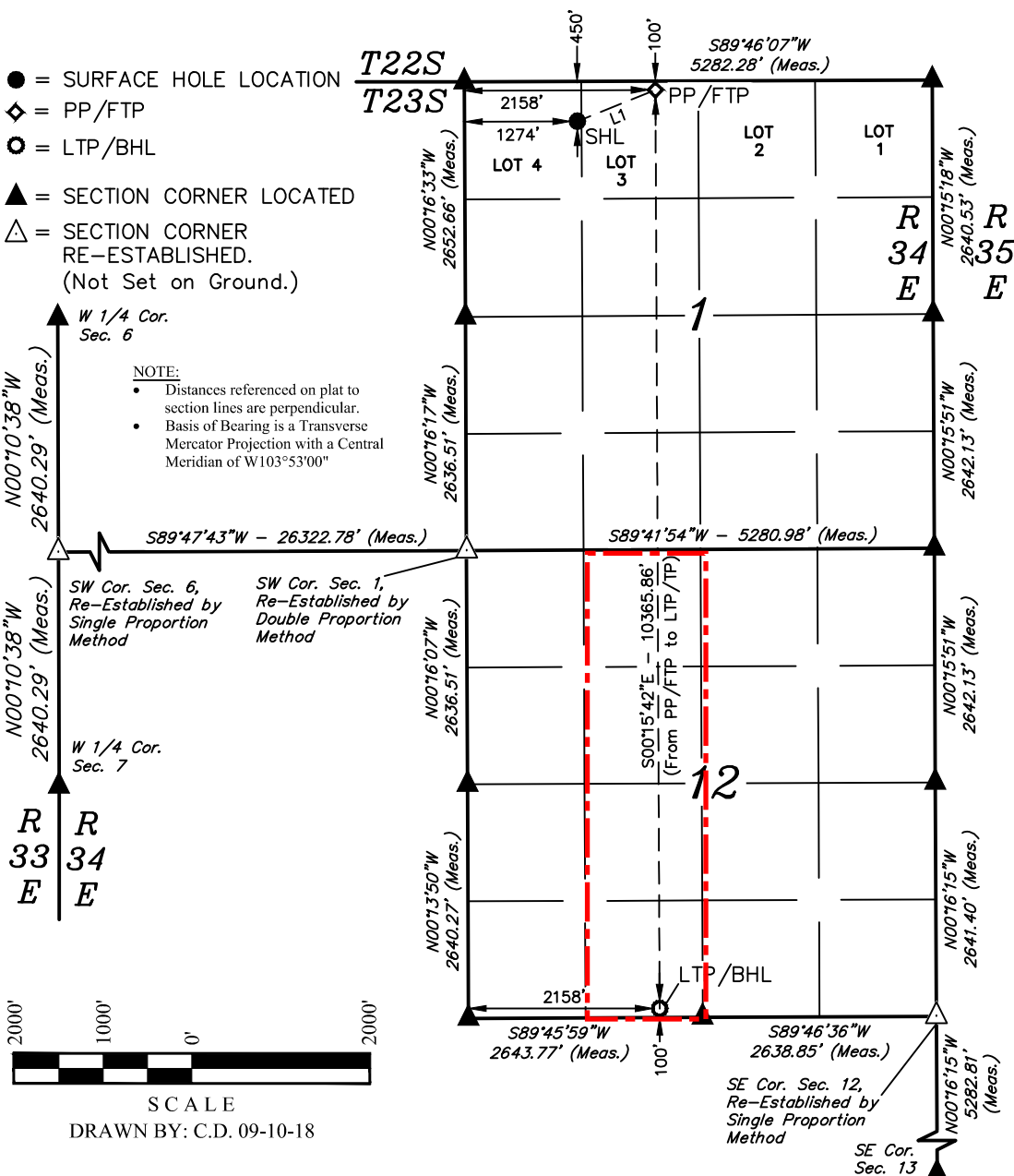
September 05, 2018

Date of Survey

Signature and Seal of Professional Surveyor:



Certificate Number:



District I
1625 N. French Dr., Hobbs, NM 88240
Phone: (575) 393-6161 Fax: (575) 393-0720
District II
811 S. First St., Artesia, NM 88210
Phone: (575) 748-1283 Fax: (575) 748-9720
District III
1000 Rio Brazos Road, Aztec, NM 87410
Phone: (505) 334-6178 Fax: (505) 334-6170
District IV
1220 S. St. Francis Dr., Santa Fe, NM 87505
Phone: (505) 476-3460 Fax: (505) 476-3462

State of New Mexico
Energy, Minerals & Natural Resources Department
OIL CONSERVATION DIVISION
1220 South St. Francis Dr.
Santa Fe, NM 87505

Form C-102
Revised August 1, 2011
Submit one copy to appropriate
District Office

☐ AMENDED REPORT

WELL LOCATION AND ACREAGE DEDICATION PLAT

¹ API Number 30-025-47061	² Pool Code 97293	³ Pool Name OJO CHISO;BONE SPRING, SOUTH
⁴ Property Code 326211	⁵ Property Name PAC-MAN 36 FED COM	⁶ Well Number #301H
⁷ OGRID No. 372165	⁸ Operator Name CENTENNIAL RESOURCE PRODUCTION, LLC	⁹ Elevation 3386.0'

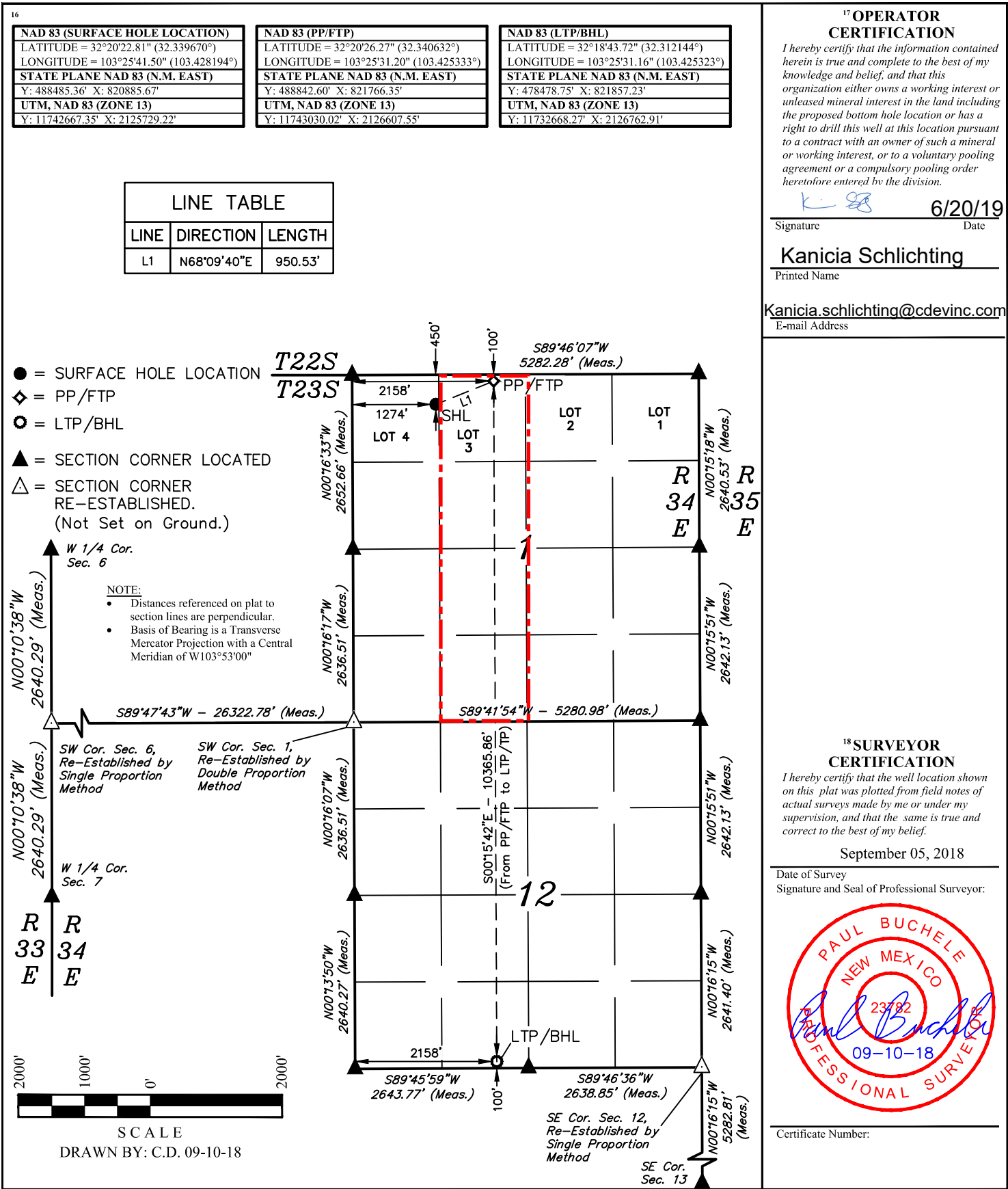
¹⁰ Surface Location

UL or lot no. 4	Section 1	Township 23S	Range 34E	Lot Idn	Feet from the 450	North/South line NORTH	Feet from the 1274	East/West line WEST	County LEA
--------------------	--------------	-----------------	--------------	---------	----------------------	---------------------------	-----------------------	------------------------	---------------

¹¹ Bottom Hole Location If Different From Surface

UL or lot no. N	Section 12	Township 23S	Range 34E	Lot Idn	Feet from the 100	North/South line SOUTH	Feet from the 2158	East/West line WEST	County LEA
¹² Dedicated Acres 160.14	¹³ Joint or Infill	¹⁴ Consolidation Code	¹⁵ Order No.						

No allowable will be assigned to this completion until all interests have been consolidated or a non-standard unit has been approved by the division.



State of New Mexico
Energy, Minerals & Natural Resources Department
OIL CONSERVATION DIVISION
1220 South St. Francis Dr.
Santa Fe, NM 87505

☐ AMENDED REPORT

WELL LOCATION AND ACREAGE DEDICATION PLAT

¹ API Number 30-025-47061	² Pool Code	³ Pool Name
⁴ Property Code	⁵ Property Name PAC-MAN 36 FED COM	⁶ Well Number #301H
⁷ OGRID No. 372165	⁸ Operator Name CENTENNIAL RESOURCE PRODUCTION, LLC	⁹ Elevation 3386.0'

¹⁰Surface Location

UL or lot no. 4	Section 1	Township 23S	Range 34E	Lot Idn	Feet from the 450	North/South line NORTH	Feet from the	East/West line WEST	County LEA
--------------------	--------------	-----------------	--------------	---------	----------------------	---------------------------	---------------	------------------------	---------------

¹¹ Bottom Hole Location If Different From Surface

UL or lot no. N	Section 12	Township 23S	Range 34E	Lot Idn	Feet from the 100	North/South line SOUTH	Feet from the 2158	East/West line WEST	County LEA
¹² Dedicated Acres 160.14		¹³ Joint or Infill		¹⁴ Consolidation Code		¹⁵ Order No.			

No allowable will be assigned to this completion until all interests have been consolidated or a non-standard unit has been approved by the division.

NAD 83 (SURFACE HOLE LOCATION) LATITUDE = 32°20'22.81" (32.339670°) LONGITUDE = 103°25'41.50" (103.428194°) STATE PLANE NAD 83 (N.M. EAST) Y: 488485.36' X: 820885.67' UTM, NAD 83 (ZONE 13) Y: 11742667.35' X: 2125729.22'	NAD 83 (PP/FTP) LATITUDE = 32°20'26.27" (32.340632°) LONGITUDE = 103°25'31.20" (103.425333°) STATE PLANE NAD 83 (N.M. EAST) Y: 488842.60' X: 821766.35' UTM, NAD 83 (ZONE 13) Y: 11743030.02' X: 2126607.55'	NAD 83 (LTP/BHL) LATITUDE = 32°18'43.72" (32.312144°) LONGITUDE = 103°25'31.16" (103.425323°) STATE PLANE NAD 83 (N.M. EAST) Y: 478478.75' X: 821857.23' UTM, NAD 83 (ZONE 13) Y: 11732668.27' X: 2126762.91'
--	---	--

LINE TABLE		
LINE	DIRECTION	LENGTH
L1	N68°09'40"E	950.53'

17 OPERATOR CERTIFICATION

I hereby certify that the information contained herein is true and complete to the best of my knowledge and belief, and that this organization either owns a working interest or unleased mineral interest in the land including the proposed bottom hole location or has a right to drill this well at this location pursuant to a contract with an owner of such a mineral or working interest, or to a voluntary pooling agreement or a compulsory pooling order heretofore entered by the division.

K. 28 6/20/19

Signature
Date

Kanicia Schlichting

Printed Name _____

Kanicia.schlichting@cdevinc.com

E-mail Address

18 SURVEYOR CERTIFICATION

I hereby certify that the well location shown on this plat was plotted from field notes of actual surveys made by me or under my supervision, and that the same is true and correct to the best of my belief.

September 05, 2018

Date of Survey _____
Signature and Seal of Professional Surveyor: _____



Certificate Number:

