

DISTRICT I
1625 N. FRENCH DR., HOBBS, NM 88240
Phone: (505) 393-6181 Fax: (505) 393-0720

DISTRICT II
811 S. FIRST ST., ARTESIA, NM 88210
Phone: (505) 748-1283 Fax: (505) 748-0720

DISTRICT III
1000 RIO BRAZOS RD., AZTEC, NM 87410
Phone: (505) 334-6178 Fax: (505) 334-6170

DISTRICT IV
1220 S. ST. FRANCIS DR., SANTA FE, NM 87505
Phone: (505) 478-3480 Fax: (505) 478-3482

State of New Mexico
Energy, Minerals & Natural Resources Department
OIL CONSERVATION DIVISION
1220 SOUTH ST. FRANCIS DR.
Santa Fe, New Mexico 87505

OCD - HOBBS
04/17/2020
RECEIVED

Form C-102
Revised August 1, 2011
Submit one copy to appropriate
District Office

☐ AMENDED REPORT

WELL LOCATION AND ACREAGE DEDICATION PLAT

API Number 30-025-47104	Pool Code 98094	Pool Name Bobcat Draw; Upper Wolfcamp
Property Code 327008	Property Name VALOR FEDERAL COM	Well Number 707H
OGRID No. 229137	Operator Name COG OPERATING, LLC	Elevation 3325.9'

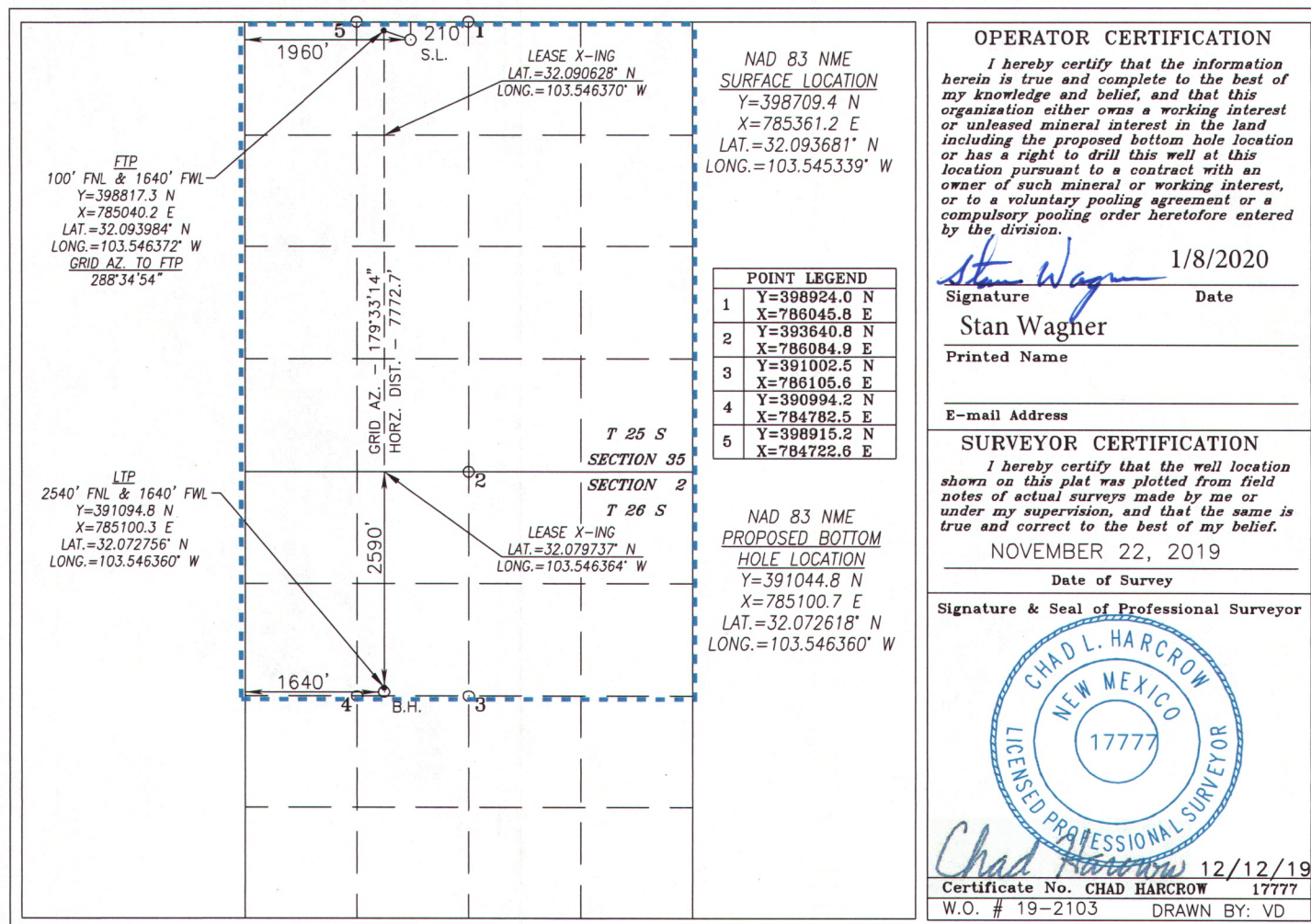
Surface Location

UL or lot No.	Section	Township	Range	Lot Idn	Feet from the	North/South line	Feet from the	East/West line	County
C	35	25-S	33-E		210	NORTH	1960	WEST	LEA

Bottom Hole Location If Different From Surface

UL or lot No.	Section	Township	Range	Lot Idn	Feet from the	North/South line	Feet from the	East/West line	County
F	2	26-S	33-E		2590	NORTH	1640	WEST	LEA
Dedicated Acres 960	Joint or Infill	Consolidation Code	Order No.						

NO ALLOWABLE WILL BE ASSIGNED TO THIS COMPLETION UNTIL ALL INTERESTS HAVE BEEN CONSOLIDATED
OR A NON-STANDARD UNIT HAS BEEN APPROVED BY THE DIVISION



OCD - HOBBS
04/17/2020
RECEIVED

Intent ☒ As Drilled ☐

API #
30-025-

Operator Name:	Property Name:	Well Number
COG Operating LLC	Valor Federal Com	707H

Kick Off Point (KOP)

UL C	Section 35	Township 25S	Range 33E	Lot	Feet	From N/S	Feet	From E/W	County Lea
Latitude					Longitude				NAD 83

First Take Point (FTP)

UL C	Section 35	Township 25S	Range 33E	Lot	Feet 100	From N/S North	Feet 1640	From E/W West	County Lea
Latitude 32.093984					Longitude -103.546372				NAD NAD 83

Last Take Point (LTP)

UL F	Section 2	Township 26S	Range 33E	Lot	Feet 2540	From N/S North	Feet 1640	From E/W West	County Lea
Latitude 32.072756					Longitude -103.546360				NAD NAD 83

Is this well the defining well for the Horizontal Spacing Unit? ☐ No

Is this well an infill well? ☐ Yes

If infill is yes please provide API if available, Operator Name and well number for Defining well for Horizontal Spacing Unit.

API #
30-025-

Operator Name:	Property Name:	Well Number
COG Operating LLC	Valor Federal Com	704H

KZ 06/29/2018