

UNITED STATES  
DEPARTMENT OF THE INTERIOR  
BUREAU OF LAND MANAGEMENTFORM APPROVED  
OMB NO. 1004-0137  
Expires: January 31, 2018**SUNDRY NOTICES AND REPORTS ON WELLS**  
**Do not use this form for proposals to drill or to re-enter an abandoned well. Use form 3160-3 (APD) for such proposals.**5. Lease Serial No.  
NMNM18848

6. If Indian, Allottee or Tribe Name

7. If Unit or CA/Agreement, Name and/or No.

**SUBMIT IN TRIPLICATE - Other instructions on page 2**

1. Type of Well

☒ Oil Well ☐ Gas Well ☐ Other

8. Well Name and No.

PURRITO 18-19 FED COM 210H

2. Name of Operator

DEVON ENERGY PRODUCTION COMPANY

Contact: JENNIFER HARMS

jennifer.harms@devon.com

9. API Well No.

30-025-46786-00-X1

3a. Address

333 WEST SHERIDAN AVENUE  
OKLAHOMA CITY, OK 73102

3b. Phone No. (include area code)

Ph: 405-552-6560

10. Field and Pool or Exploratory Area  
SAND DUNES

4. Location of Well (Footage, Sec., T., R., M., or Survey Description)

Sec 18 T23S R32E NENW 525FNL 1760FWL  
32.310276 N Lat, 103.717262 W Lon

11. County or Parish, State

LEA COUNTY, NM

## 12. CHECK THE APPROPRIATE BOX(ES) TO INDICATE NATURE OF NOTICE, REPORT, OR OTHER DATA

TYPE OF SUBMISSION	TYPE OF ACTION				
<input type="checkbox"/> Notice of Intent	<input type="checkbox"/> Acidize	<input type="checkbox"/> Deepen	<input type="checkbox"/> Production (Start/Resume)	<input type="checkbox"/> Water Shut-Off	
<input checked="" type="checkbox"/> Subsequent Report	<input type="checkbox"/> Alter Casing	<input type="checkbox"/> Hydraulic Fracturing	<input type="checkbox"/> Reclamation	<input type="checkbox"/> Well Integrity	
<input type="checkbox"/> Final Abandonment Notice	<input type="checkbox"/> Casing Repair	<input type="checkbox"/> New Construction	<input type="checkbox"/> Recomplete	<input checked="" type="checkbox"/> Other	
	<input type="checkbox"/> Change Plans	<input type="checkbox"/> Plug and Abandon	<input type="checkbox"/> Temporarily Abandon	Change to Original A	
	<input type="checkbox"/> Convert to Injection	<input type="checkbox"/> Plug Back	<input type="checkbox"/> Water Disposal	PD	

13. Describe Proposed or Completed Operation: Clearly state all pertinent details, including estimated starting date of any proposed work and approximate duration thereof. If the proposal is to deepen directionally or recompleat horizontally, give subsurface locations and measured and true vertical depths of all pertinent markers and zones. Attach the Bond under which the work will be performed or provide the Bond No. on file with BLM/BIA. Required subsequent reports must be filed within 30 days following completion of the involved operations. If the operation results in a multiple completion or recompleat in a new interval, a Form 3160-4 must be filed once testing has been completed. Final Abandonment Notices must be filed only after all requirements, including reclamation, have been completed and the operator has determined that the site is ready for final inspection.

Devon Energy Production Co., L.P. (Devon) respectfully requests to have the dedicated acres on the C102 changed to match the submitted CA for approval. The dedicated spacing unit is larger due to lots. Please attached revised C102.

14. I hereby certify that the foregoing is true and correct.

**Electronic Submission #515964 verified by the BLM Well Information System**  
**For DEVON ENERGY PRODUCTION COMPANY, sent to the Hobbs**  
**Committed to AFMSS for processing by PRISCILLA PEREZ on 05/21/2020 (20PP1199SE)**

Name (Printed/Typed) JENNIFER HARMS

Title REGULATORY COMPLIANCE ANALYST

Signature (Electronic Submission)

Date 05/19/2020

**THIS SPACE FOR FEDERAL OR STATE OFFICE USE**

Approved By

**ACCEPTED**LONG VO  
Title PETROLEUM ENGINEER

Date 06/01/2020

Conditions of approval, if any, are attached. Approval of this notice does not warrant or certify that the applicant holds legal or equitable title to those rights in the subject lease which would entitle the applicant to conduct operations thereon.

Office Hobbs

Title 18 U.S.C. Section 1001 and Title 43 U.S.C. Section 1212, make it a crime for any person knowingly and willfully to make to any department or agency of the United States any false, fictitious or fraudulent statements or representations as to any matter within its jurisdiction.

(Instructions on page 2)

**\*\* BLM REVISED \*\* BLM REVISED \*\* BLM REVISED \*\* BLM REVISED \*\* BLM REVISED \*\***

Accepted - KMS NMOCD

## Revisions to Operator-Submitted EC Data for Sundry Notice #515964

	Operator Submitted	BLM Revised (AFMSS)
Sundry Type:	APDCH SR	APDCH SR
Lease:	NMNM18848	NMNM18848
Agreement:		
Operator:	DEVON ENERGY PRODUCTION COMPAN 333 W SHERIDAN AVE OKLAHOMA CITY, OK 73102 Ph: 405-552-6560	DEVON ENERGY PRODUCTION COMPAN 333 WEST SHERIDAN AVENUE OKLAHOMA CITY, OK 73102 Ph: 4055526571
Admin Contact:	JENNIFER HARMS REGULATORY COMPLIANCE ANALYST E-Mail: jennifer.harms@dvn.com  Ph: 405-552-6560	JENNIFER HARMS REGULATORY COMPLIANCE ANALYST E-Mail: jennifer.harms@dvn.com  Ph: 405-552-6560
Tech Contact:	JENNIFER HARMS REGULATORY COMPLIANCE ANALYST E-Mail: jennifer.harms@dvn.com  Ph: 405-552-6560	JENNIFER HARMS REGULATORY COMPLIANCE ANALYST E-Mail: jennifer.harms@dvn.com  Ph: 405-552-6560
Location:		
State:	NM	NM
County:	LEA	LEA
Field/Pool:	SAND DUNES; BONE SPRING,	SAND DUNES
Well/Facility:	PURRITO 18-19 FED COM 210H Sec 18 T23S R32E NENW 525FNL 1760FWL	PURRITO 18-19 FED COM 210H Sec 18 T23S R32E NENW 525FNL 1760FWL 32.310276 N Lat, 103.717262 W Lon

District I  
1625 N. French Dr., Hobbs, NM 88240  
Phone: (575) 393-6161 Fax: (575) 393-0720  
District II  
811 S. First St., Artesia, NM 88210  
Phone: (575) 748-1283 Fax: (575) 748-9720  
District III  
1000 Rio Brazos Road, Aztec, NM 87410  
Phone: (505) 334-6178 Fax: (505) 334-6170  
District IV  
1220 S. St. Francis Dr., Santa Fe, NM 87505  
Phone: (505) 476-3460 Fax: (505) 476-3462

State of New Mexico  
Energy, Minerals & Natural Resources Department  
OIL CONSERVATION DIVISION  
1220 South St. Francis Dr.  
Santa Fe, NM 87505

Form C-102  
Revised August 1, 2011  
Submit one copy to appropriate  
District Office

☐ AMENDED REPORT

WELL LOCATION AND ACREAGE DEDICATION PLAT

<sup>1</sup> API Number	<sup>2</sup> Pool Code 53805	<sup>3</sup> Pool Name SAND DUNES;BONE SPRING, SOUTH
<sup>4</sup> Property Code	<sup>5</sup> Property Name PURRITO 18-19 FED COM	<sup>6</sup> Well Number 210H
<sup>7</sup> OGRID No. 6137	<sup>8</sup> Operator Name DEVON ENERGY PRODUCTION COMPANY, L.P.	<sup>9</sup> Elevation 3555.5

<sup>10</sup> Surface Location

UL or lot no. C	Section 18	Township 23S	Range 32E	Lot Idn	Feet from the 525	North/South line NORTH	Feet from the 1760	East/West line WEST	County LEA
--------------------	---------------	-----------------	--------------	---------	----------------------	---------------------------	-----------------------	------------------------	---------------

<sup>11</sup> Bottom Hole Location If Different From Surface

UL or lot no. 4	Section 19	Township 23S	Range 32E	Lot Idn 4	Feet from the 20	North/South line SOUTH	Feet from the 480	East/West line WEST	County LEA
--------------------	---------------	-----------------	--------------	--------------	---------------------	---------------------------	----------------------	------------------------	---------------

<sup>12</sup> Dedicated Acres 345.08	<sup>13</sup> Joint or Infill	<sup>14</sup> Consolidation Code	<sup>15</sup> Order No.
---	-------------------------------	----------------------------------	-------------------------

**\*NMOCD REQUESTED TWO PLATS TO SHOW TWO DIFFERENT POOL CODES IN THE WELLBORE\***  
No allowable will be assigned to this completion until all interests have been consolidated or a non-standard unit has been approved by the division.

<p>NW CORNER SEC. 18 LAT. = 32.3116930°N LONG. = 103.7229595°W NMSP EAST (FT) N = 477663.17 E = 729904.77</p> <p>W/4 CORNER SEC. 18 LAT. = 32.3044384°N LONG. = 103.7229618°W NMSP EAST (FT) N = 475023.97 E = 729919.08</p> <p>SW CORNER SEC. 18 LAT. = 32.2971933°N LONG. = 103.7229608°W NMSP EAST (FT) N = 472388.26 E = 729934.39</p> <p>W/4 CORNER SEC. 19 LAT. = 32.2899380°N LONG. = 103.7229667°W NMSP EAST (FT) N = 469748.81 E = 729947.60</p> <p>SW CORNER SEC. 19 LAT. = 32.2826837°N LONG. = 103.7229672°W NMSP EAST (FT) N = 467109.75 E = 729962.47</p>		<p>N89°21'06"E 2840.72 FT N89°21'58"E 2640.54 FT</p> <p>N/4 CORNER SEC. 18 LAT. = 32.3117365°N LONG. = 103.7137668°W NMSP EAST (FT) N = 477695.30 E = 732744.70</p> <p>PURRITO 18-19 FED COM 210H ELEV. = 3555.5' LAT. = 32.3102772°N (NAD83) LONG. = 103.7172646°W NMSP EAST (FT) N = 477158.17 E = 731867.14</p> <p>FIRST TAKE POINT 100' FSL, 480' FWL LAT. = 32.3114256°N LONG. = 103.7214082°W NMSP EAST (FT) N = 477568.62 E = 730385.19</p> <p>NOTE: LATITUDE AND LONGITUDE COORDINATES ARE SHOWN USING THE NORTH AMERICAN DATUM OF 1983 (NAD83). LISTED NEW MEXICO STATE PLANE EAST COORDINATES ARE GRID (NAD83). BASIS OF BEARING AND DISTANCES USED ARE NEW MEXICO STATE PLANE EAST COORDINATES MODIFIED TO THE SURFACE. VERTICAL DATUM NAVD83.</p> <p>BOTTOM OF HOLE LAT. = 32.2827454°N LONG. = 103.7214143°W NMSP EAST (FT) N = 467134.93 E = 730442.24</p> <p>S/4 CORNER SEC. 19 LAT. = 32.2827234°N LONG. = 103.7137479°W NMSP EAST (FT) N = 467140.54 E = 732811.53</p>		<p>NE CORNER SEC. 18 LAT. = 32.3117746°N LONG. = 103.7052219°W NMSP EAST (FT) N = 477724.51 E = 735384.50</p> <p>E/4 CORNER SEC. 18 LAT. = 32.3045169°N LONG. = 103.7052099°W NMSP EAST (FT) N = 475084.23 E = 735403.66</p> <p>SE CORNER SEC. 18 LAT. = 32.2972667°N LONG. = 103.7052095°W NMSP EAST (FT) N = 472446.64 E = 735419.26</p> <p>LAST TAKE POINT 100' FSL, 480' FWL LAT. = 32.2829652°N LONG. = 103.7214143°W NMSP EAST (FT) N = 467214.91 E = 730441.78</p> <p>E/4 CORNER SEC. 19 LAT. = 32.2900102°N LONG. = 103.7052115°W NMSP EAST (FT) N = 469806.75 E = 735434.10</p> <p>SE CORNER SEC. 19 LAT. = 32.2827586°N LONG. = 103.7052086°W NMSP EAST (FT) N = 467168.68 E = 735450.43</p>		<p><b><sup>17</sup> OPERATOR CERTIFICATION</b></p> <p>I hereby certify that the information contained herein is true and complete to the best of my knowledge and belief, and that this organization either owns a working interest or unleased mineral interest in the land including the proposed bottom hole location or has a right to drill this well at this location pursuant to a contract with an owner of such a mineral or working interest, or to a voluntary pooling agreement or a compulsory pooling order heretofore entered by the division.</p> <p><i>Jenny Harms</i> 5-20-19 Signature Date</p> <p>Jenny Harms Printed Name</p> <p>Jenny.harms@dvn.com E-mail Address</p> <p><b><sup>18</sup> SURVEYOR CERTIFICATION</b></p> <p>I hereby certify that the well location shown on this plat was plotted from field notes of actual surveys made by me or under my supervision, and that the same is true and correct to the best of my belief.</p> <p>MAY 10, 2019 Date of Survey</p> <p><i>FILMON F. JARAMILLO</i> Signature and Seal of Professional Surveyor</p> <p>Certificate Number FILMON F. JARAMILLO, PLS 12797 SURVEY NO. 7276</p>
---	--	---	--	--	--	--



District I  
1625 N. French Dr., Hobbs, NM 88240  
Phone: (575) 393-6161 Fax: (575) 393-0720  
District II  
811 S. First St., Artesia, NM 88210  
Phone: (575) 748-1283 Fax: (575) 748-9720  
District III  
1000 Rio Brazos Road, Aztec, NM 87410  
Phone: (505) 334-6178 Fax: (505) 334-6170  
District IV  
1220 S. St. Francis Dr., Santa Fe, NM 87505  
Phone: (505) 476-3460 Fax: (505) 476-3462

State of New Mexico  
Energy, Minerals & Natural Resources Department  
OIL CONSERVATION DIVISION  
1220 South St. Francis Dr.  
Santa Fe, NM 87505

Form C-102  
Revised August 1, 2011  
Submit one copy to appropriate  
District Office

☐ AMENDED REPORT

WELL LOCATION AND ACREAGE DEDICATION PLAT

<sup>1</sup> API Number	<sup>2</sup> Pool Code 53800	<sup>3</sup> Pool Name SAND DUNES;BONE SPRING
<sup>4</sup> Property Code	<sup>5</sup> Property Name PURRITO 18-19 FED COM	<sup>6</sup> Well Number 210H
<sup>7</sup> OGRID No. 6137	<sup>8</sup> Operator Name DEVON ENERGY PRODUCTION COMPANY, L.P.	<sup>9</sup> Elevation 3555.5

<sup>10</sup> Surface Location

UL or lot no. C	Section 18	Township 23S	Range 32E	Lot Idn	Feet from the 525	North/South line NORTH	Feet from the 1760	East/West line WEST	County LEA
--------------------	---------------	-----------------	--------------	---------	----------------------	---------------------------	-----------------------	------------------------	---------------

<sup>11</sup> Bottom Hole Location If Different From Surface

UL or lot no. 4	Section 19	Township 23S	Range 32E	Lot Idn 4	Feet from the 20	North/South line SOUTH	Feet from the 480	East/West line WEST	County LEA
--------------------	---------------	-----------------	--------------	--------------	---------------------	---------------------------	----------------------	------------------------	---------------

<sup>12</sup> Dedicated Acres 344.28	<sup>13</sup> Joint or Infill	<sup>14</sup> Consolidation Code	<sup>15</sup> Order No.
---	-------------------------------	----------------------------------	-------------------------

**\*NMOCD REQUESTED TWO PLATS TO SHOW TWO DIFFERENT POOL CODES IN THE WELLBORE\***  
No allowable will be assigned to this completion until all interests have been consolidated or a non-standard unit has been approved by the division.

<p>NW CORNER SEC. 18 LAT. = 32.3116930°N LONG. = 103.7229595°W NMSP EAST (FT) N = 477663.17 E = 729904.77</p> <p>W/4 CORNER SEC. 18 LAT. = 32.3044384°N LONG. = 103.7229618°W NMSP EAST (FT) N = 475023.97 E = 729919.08</p> <p>SW CORNER SEC. 18 LAT. = 32.2971933°N LONG. = 103.7229608°W NMSP EAST (FT) N = 472388.26 E = 729934.39</p> <p>W/4 CORNER SEC. 19 LAT. = 32.2899380°N LONG. = 103.7229667°W NMSP EAST (FT) N = 469748.81 E = 729947.60</p> <p>SW CORNER SEC. 19 LAT. = 32.2826837°N LONG. = 103.7229672°W NMSP EAST (FT) N = 467109.75 E = 729962.47</p>	<p>N89°21'06"E 2840.72 FT</p> <p>N89°21'58"E 2640.54 FT</p> <p>NE CORNER SEC. 18 LAT. = 32.3117746°N LONG. = 103.7052219°W NMSP EAST (FT) N = 477724.51 E = 735384.50</p> <p>E/4 CORNER SEC. 18 LAT. = 32.3045169°N LONG. = 103.7052099°W NMSP EAST (FT) N = 475084.23 E = 735403.66</p> <p>SE CORNER SEC. 18 LAT. = 32.2972667°N LONG. = 103.7052095°W NMSP EAST (FT) N = 472446.64 E = 735419.26</p> <p>LAST TAKE POINT 100' FSL, 480' FWL LAT. = 32.2829652°N LONG. = 103.7214143°W NMSP EAST (FT) N = 467214.91 E = 730441.78</p> <p>E/4 CORNER SEC. 19 LAT. = 32.2900102°N LONG. = 103.7052115°W NMSP EAST (FT) N = 469806.75 E = 735434.10</p> <p>SE CORNER SEC. 19 LAT. = 32.2827586°N LONG. = 103.7052086°W NMSP EAST (FT) N = 467168.68 E = 735450.43</p>	<p><sup>17</sup> OPERATOR CERTIFICATION</p> <p>I hereby certify that the information contained herein is true and complete to the best of my knowledge and belief, and that this organization either owns a working interest or unleased mineral interest in the land including the proposed bottom hole location or has a right to drill this well at this location pursuant to a contract with an owner of such a mineral or working interest, or to a voluntary pooling agreement or a compulsory pooling order heretofore entered by the division.</p> <p><i>Jenny Harms</i> 5-20-19 Signature Date</p> <p>Jenny Harms Printed Name</p> <p>Jenny.harms@dvn.com E-mail Address</p> <p><sup>18</sup> SURVEYOR CERTIFICATION</p> <p>I hereby certify that the well location shown on this plat was plotted from field notes of actual surveys made by me or under my supervision, and that the same is true and correct to the best of my belief.</p> <p>MAY 10, 2019 Date of Survey</p> <p><i>FILMON F. JARAMILLO</i> Signature and Seal of Professional Surveyor</p> <p>Certificate Number FILMON F. JARAMILLO, PLS 12797 SURVEY NO. 7276</p>
---	--	--

Intent ☒ As Drilled ☐

API #		
Operator Name: <b>DEVON ENERGY PRODUCTION CO., L.P.</b>	Property Name: <b>PURRITO 18-19 FED COM</b>	Well Number <b>210H</b>

Kick Off Point (KOP)

UL <b>D</b>	Section <b>18</b>	Township <b>23S</b>	Range <b>32E</b>	Lot <b>1</b>	Feet <b>200</b>	From N/S <b>FNL</b>	Feet <b>573</b>	From E/W <b>FWL</b>	County <b>LEA</b>
Latitude <b>32.311189</b>					Longitude <b>-103.721101</b>				NAD <b>83</b>

First Take Point (FTP)

UL <b>D</b>	Section <b>18</b>	Township <b>23S</b>	Range <b>32E</b>	Lot <b>1</b>	Feet <b>100</b>	From N/S <b>NORTH</b>	Feet <b>480</b>	From E/W <b>WEST</b>	County <b>LEA</b>
Latitude <b>32.3114256</b>					Longitude <b>103.7214062</b>				NAD <b>83</b>

Last Take Point (LTP)

UL <b>D</b>	Section <b>19</b>	Township <b>23S</b>	Range <b>32E</b>	Lot <b>4</b>	Feet <b>100</b>	From N/S <b>SOUTH</b>	Feet <b>480</b>	From E/W <b>WEST</b>	County <b>LEA</b>
Latitude <b>32.2829652</b>					Longitude <b>103.7214143</b>				NAD <b>83</b>

Is this well the defining well for the Horizontal Spacing Unit?

☐ no

Is this well an infill well?

☐ yes

If infill is yes please provide API if available, Operator Name and well number for Defining well for Horizontal Spacing Unit.

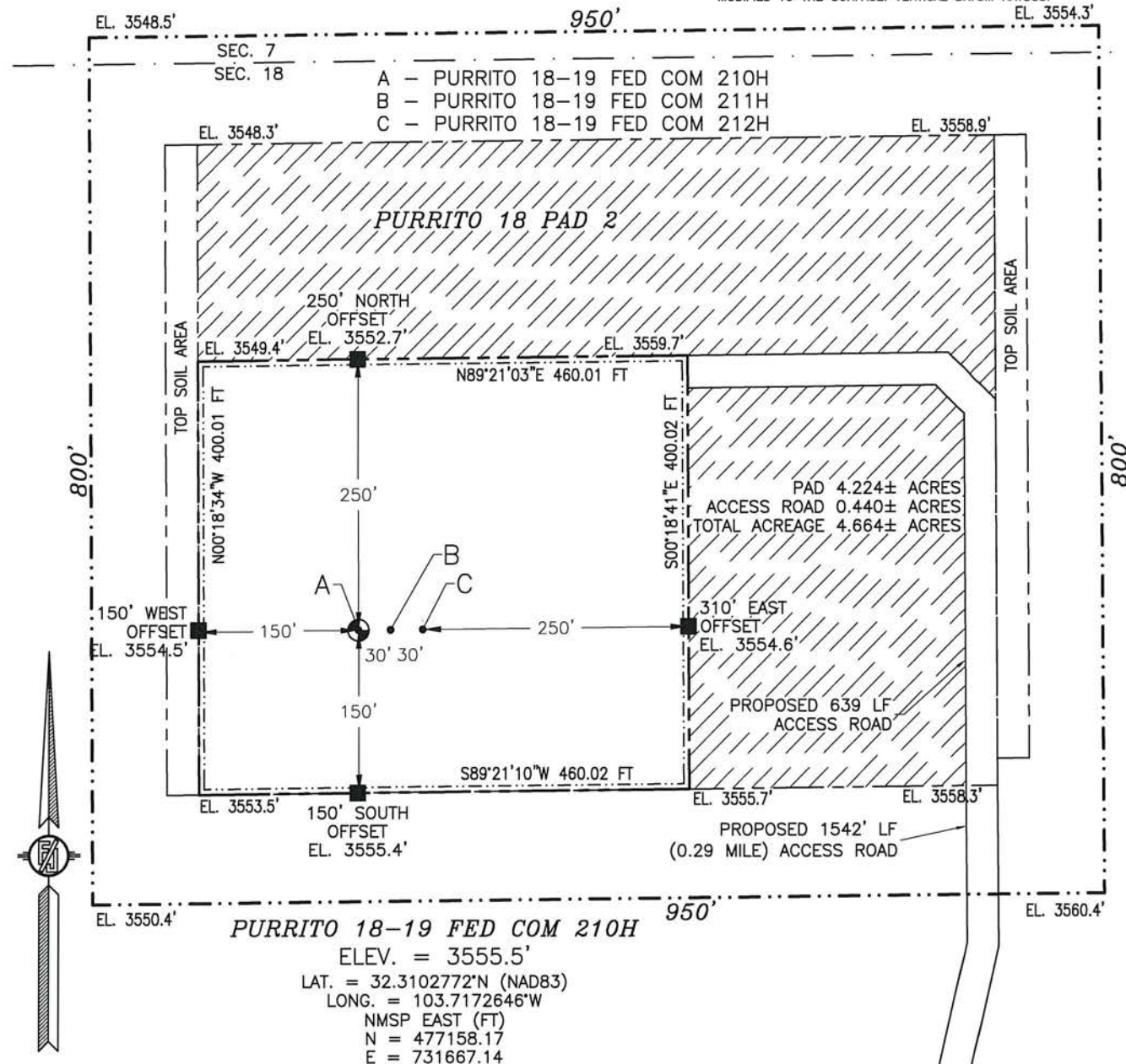
API #		
Operator Name:	Property Name:	Well Number

KZ 06/29/2018



SECTION 18, TOWNSHIP 23 SOUTH, RANGE 32 EAST, N.M.P.M.  
LEA COUNTY, STATE OF NEW MEXICO  
**SITE MAP**

NOTE: LATITUDE AND LONGITUDE COORDINATES ARE SHOWN USING THE NORTH AMERICAN DATUM OF 1983 (NAD83) LISTED NEW MEXICO STATE PLANE EAST COORDINATES ARE GRID (NAD83). BASIS OF BEARING AND DISTANCES USED ARE NEW MEXICO STATE PLANE EAST COORDINATES MODIFIED TO THE SURFACE. VERTICAL DATUM NAVD88.



015 75 150 300  
SCALE 1" = 150'

**DIRECTIONS TO LOCATION**

FROM THE INTERSECTION OF STATE HIGHWAY 128 AND RED ROAD GO NORTH ON RED ROAD APPROX. 3.7 MILES TO A LEASE ROAD ON RIGHT (EAST), TURN RIGHT ON LEASE ROAD AND GO APPROX. 1.5 MILES TO A ROAD LATH WITH RED & WHITE FLAGGING ON THE LEFT SIDE (NORTH) OF LEASE ROAD, TURN LEFT AND GO APPROX. 1542' (0.29 OF A MILE) TO THE SOUTHEAST PAD CORNER FOR THE PURRITO 18 PAD 2, CONTINUE NORTH-NORTHWEST-WEST 639' TO THE NORTHEAST PAD CORNER FOR THIS LOCATION.

DEVON ENERGY PRODUCTION COMPANY, L.P.  
**PURRITO 18-19 FED COM 210H**  
LOCATED 525 FT. FROM THE NORTH LINE  
AND 1760 FT. FROM THE WEST LINE OF  
SECTION 18, TOWNSHIP 23 SOUTH,  
RANGE 32 EAST, N.M.P.M.  
LEA COUNTY, STATE OF NEW MEXICO  
LAND STATUS: BLM

MAY 10, 2019

SURVEY NO. 7276

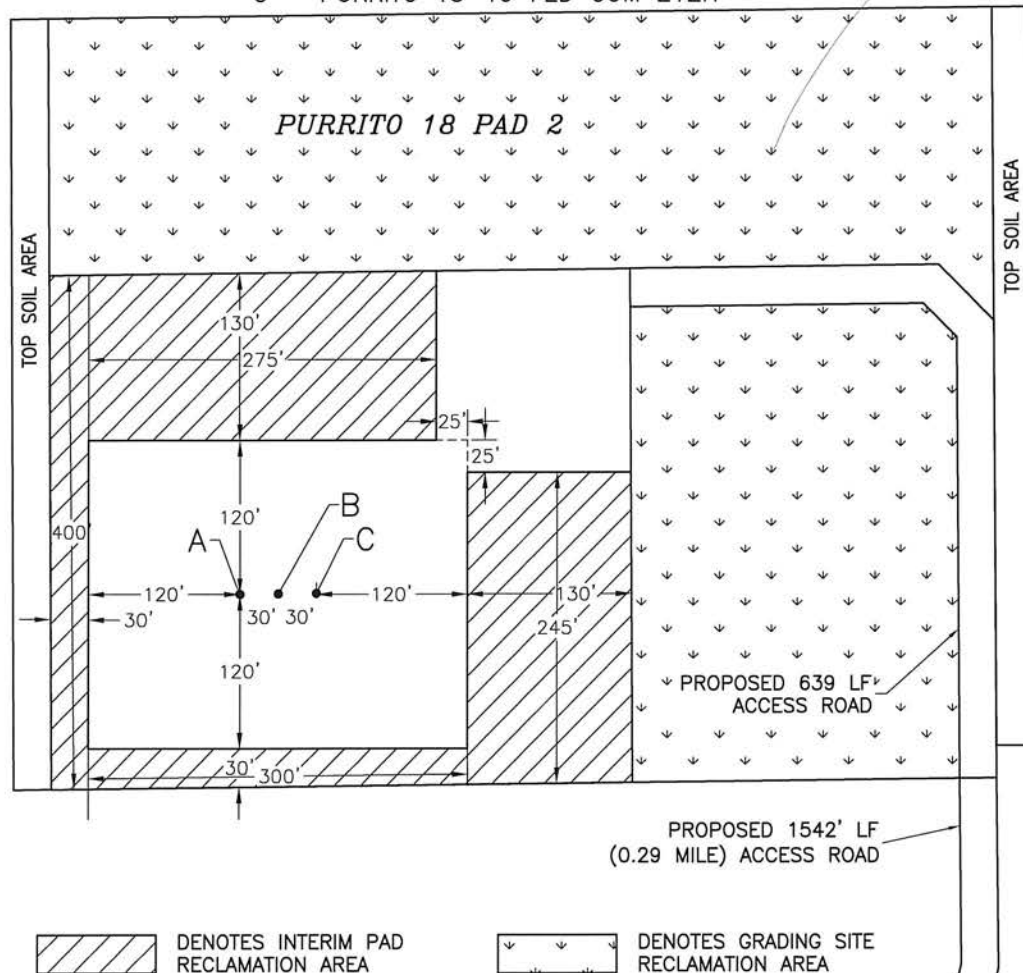
MADRON SURVEYING, INC. 301 SOUTH CANAL (575) 234-3341

CARLSBAD, NEW MEXICO

SECTION 18, TOWNSHIP 23 SOUTH, RANGE 32 EAST, N.M.P.M.  
LEA COUNTY, STATE OF NEW MEXICO  
INTERIM SITE BUILD PLAN

SEC. 7  
SEC. 18

A - PURRITO 18-19 FED COM 210H  
B - PURRITO 18-19 FED COM 211H  
C - PURRITO 18-19 FED COM 212H



DENOTES INTERIM PAD RECLAMATION AREA

DENOTES GRADING SITE RECLAMATION AREA

015 75 150 300  
SCALE 1" = 150'

2.028± ACRES INTERIM PAD RECLAMATION AREA  
5.666± ACRES GRADING SITE RECLAMATION AREA  
2.637± ACRES NON-RECLAIMED AREA  
10.331± ACRES PURRITO 18 PAD 2

DEVON ENERGY PRODUCTION COMPANY, L.P.  
**PURRITO 18-19 FED COM 210H**  
LOCATED 525 FT. FROM THE NORTH LINE  
AND 1760 FT. FROM THE WEST LINE OF  
SECTION 18, TOWNSHIP 23 SOUTH,  
RANGE 32 EAST, N.M.P.M.  
LEA COUNTY, STATE OF NEW MEXICO  
LAND STATUS: BLM

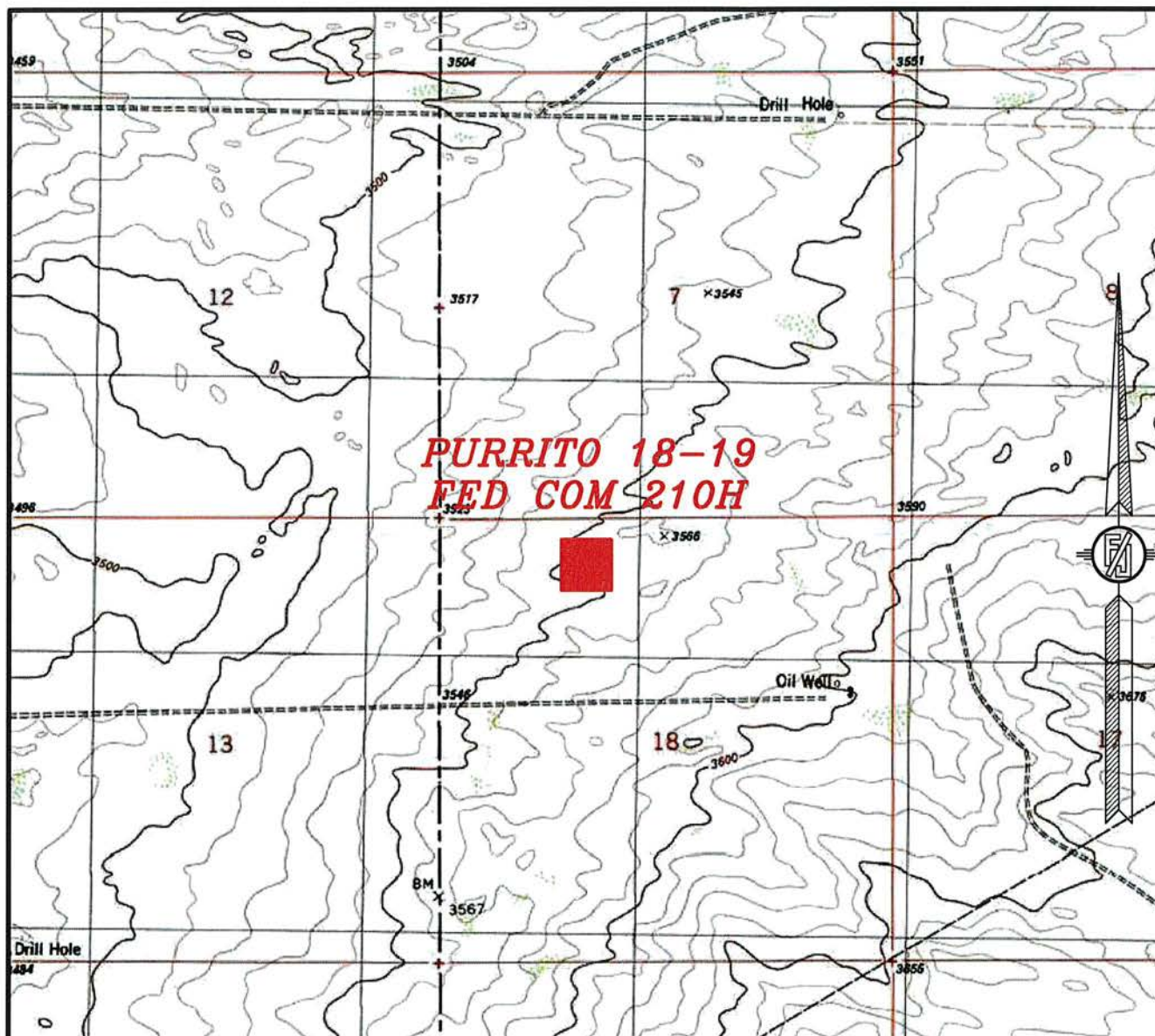
MAY 10, 2019

SURVEY NO. 7276

MADRON SURVEYING, INC. 301 SOUTH CANAL CARLSBAD, NEW MEXICO  
(575) 234-3341



SECTION 18, TOWNSHIP 23 SOUTH, RANGE 32 EAST, N.M.P.M.  
LEA COUNTY, STATE OF NEW MEXICO  
LOCATION VERIFICATION MAP



USGS QUAD MAP:  
BOOTLEG RIDGE

NOT TO SCALE

DEVON ENERGY PRODUCTION COMPANY, L.P.  
**PURRITO 18-19 FED COM 210H**  
LOCATED 525 FT. FROM THE NORTH LINE  
AND 1760 FT. FROM THE WEST LINE OF  
SECTION 18, TOWNSHIP 23 SOUTH,  
RANGE 32 EAST, N.M.P.M.  
LEA COUNTY, STATE OF NEW MEXICO  
LAND STATUS: BLM

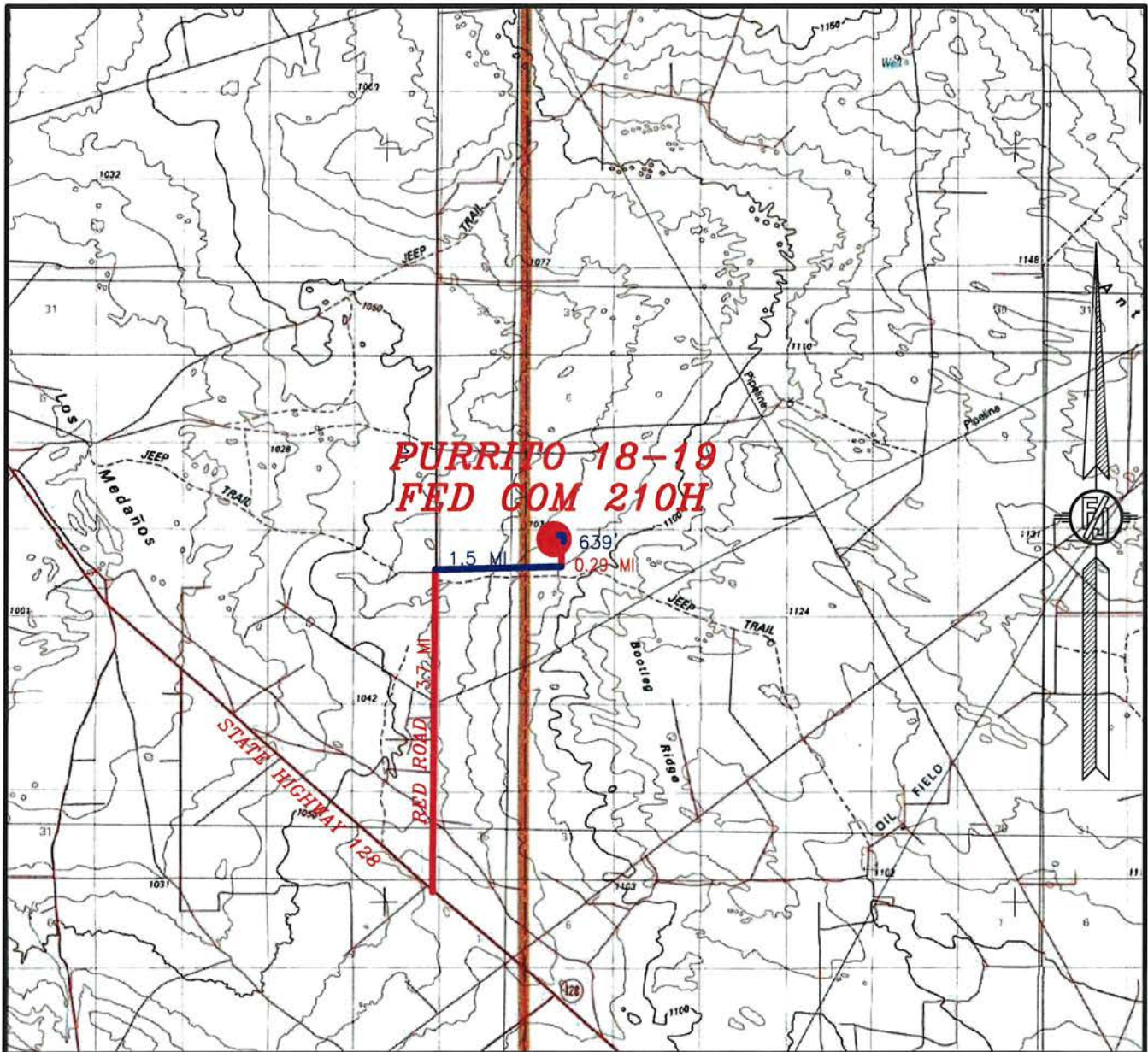
MAY 10, 2019

SURVEY NO. 7276

MADRON SURVEYING, INC. 301 SOUTH CANAL CARLSBAD, NEW MEXICO  
(575) 234-3341



SECTION 18, TOWNSHIP 23 SOUTH, RANGE 32 EAST, N.M.P.M.  
LEA COUNTY, STATE OF NEW MEXICO  
VICINITY MAP



DISTANCES IN MILES

NOT TO SCALE

DEVON ENERGY PRODUCTION COMPANY, L.P.

**PURRITO 18-19 FED COM 210H**

LOCATED 525 FT. FROM THE NORTH LINE

AND 1760 FT. FROM THE WEST LINE OF

SECTION 18, TOWNSHIP 23 SOUTH,

RANGE 32 EAST, N.M.P.M.

LEA COUNTY, STATE OF NEW MEXICO

LAND STATUS: BLM

**DIRECTIONS TO LOCATION**

FROM THE INTERSECTION OF STATE HIGHWAY 128 AND RED ROAD GO NORTH ON RED ROAD APPROX. 3.7 MILES TO A LEASE ROAD ON RIGHT (EAST), TURN RIGHT ON LEASE ROAD AND GO APPROX. 1.5 MILES TO A ROAD LATH WITH RED & WHITE FLAGGING ON THE LEFT SIDE (NORTH) OF LEASE ROAD, TURN LEFT AND GO APPROX. 1542' (0.29 OF A MILE) TO THE SOUTHEAST PAD CORNER FOR THE PURRITO 18 PAD 2, CONTINUE NORTH-NORTHWEST-WEST 639' TO THE NORTHEAST PAD CORNER FOR THIS LOCATION.

MAY 10, 2019

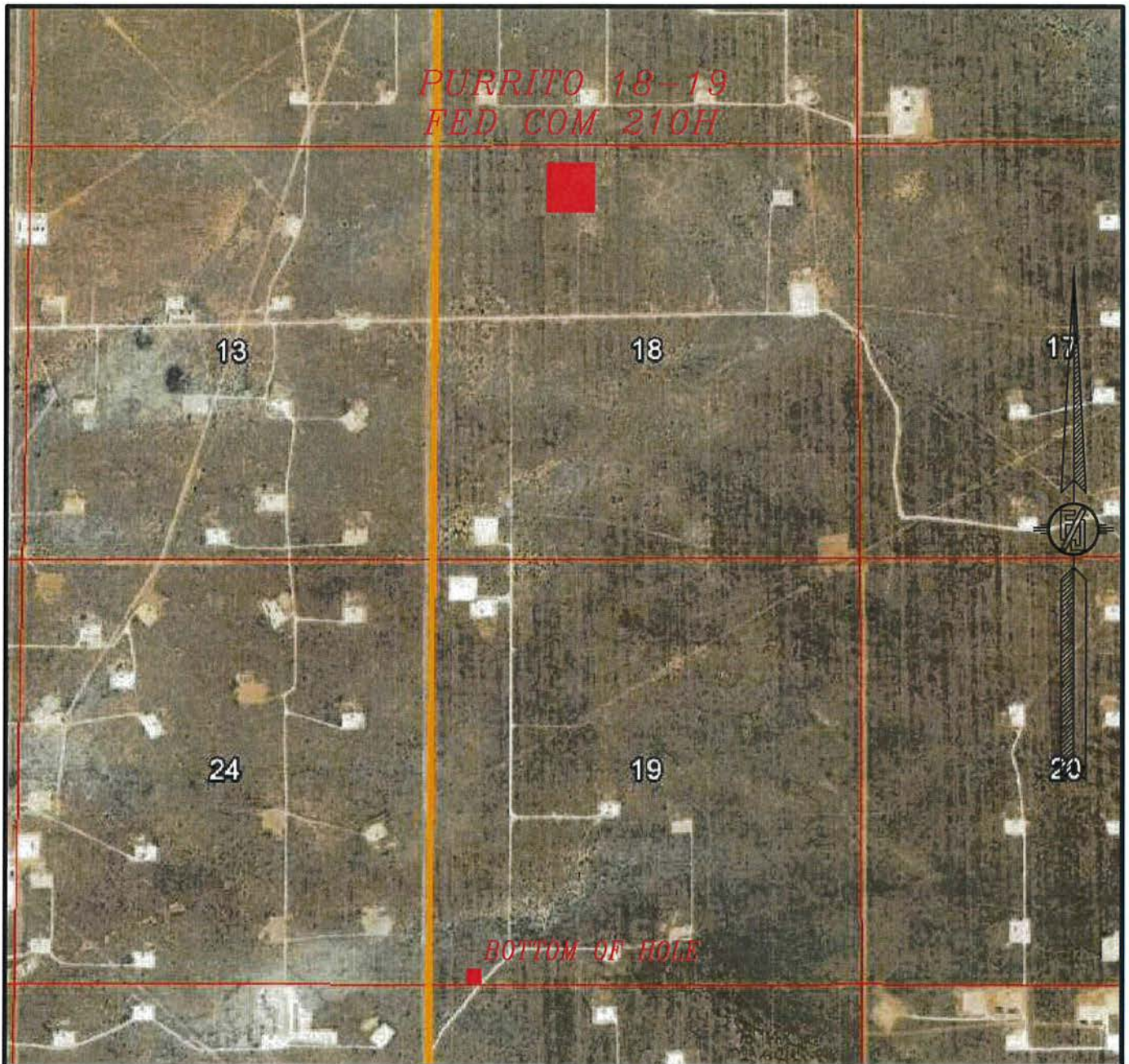
SURVEY NO. 7276

MADRON SURVEYING, INC. 301 SOUTH CANAL  
(575) 234-3341

CARLSBAD, NEW MEXICO



SECTION 18, TOWNSHIP 23 SOUTH, RANGE 32 EAST, N.M.P.M.  
LEA COUNTY, STATE OF NEW MEXICO  
**AERIAL PHOTO**



NOT TO SCALE  
AERIAL PHOTO:  
GOOGLE EARTH  
NOVEMBER 2017

**DEVON ENERGY PRODUCTION COMPANY, L.P.**  
**PURRITO 18-19 FED COM 210H**  
LOCATED 525 FT. FROM THE NORTH LINE  
AND 1760 FT. FROM THE WEST LINE OF  
SECTION 18, TOWNSHIP 23 SOUTH,  
RANGE 32 EAST, N.M.P.M.  
LEA COUNTY, STATE OF NEW MEXICO  
LAND STATUS: BLM

MAY 10, 2019

SURVEY NO. 7276

MADRON SURVEYING, INC. 301 SOUTH CANAL CARLSBAD, NEW MEXICO  
(575) 234-3341



SECTION 18, TOWNSHIP 23 SOUTH, RANGE 32 EAST, N.M.P.M.  
LEA COUNTY, STATE OF NEW MEXICO  
ACCESS AERIAL ROUTE MAP



NOT TO SCALE  
AERIAL PHOTO:  
GOOGLE EARTH  
NOVEMBER 2017

DEVON ENERGY PRODUCTION COMPANY, L.P.

**PURRITO 18-19 FED COM 210H**

LOCATED 525 FT. FROM THE NORTH LINE  
AND 1760 FT. FROM THE WEST LINE OF  
SECTION 18, TOWNSHIP 23 SOUTH,  
RANGE 32 EAST, N.M.P.M.  
LEA COUNTY, STATE OF NEW MEXICO  
LAND STATUS: BLM

MAY 10, 2019

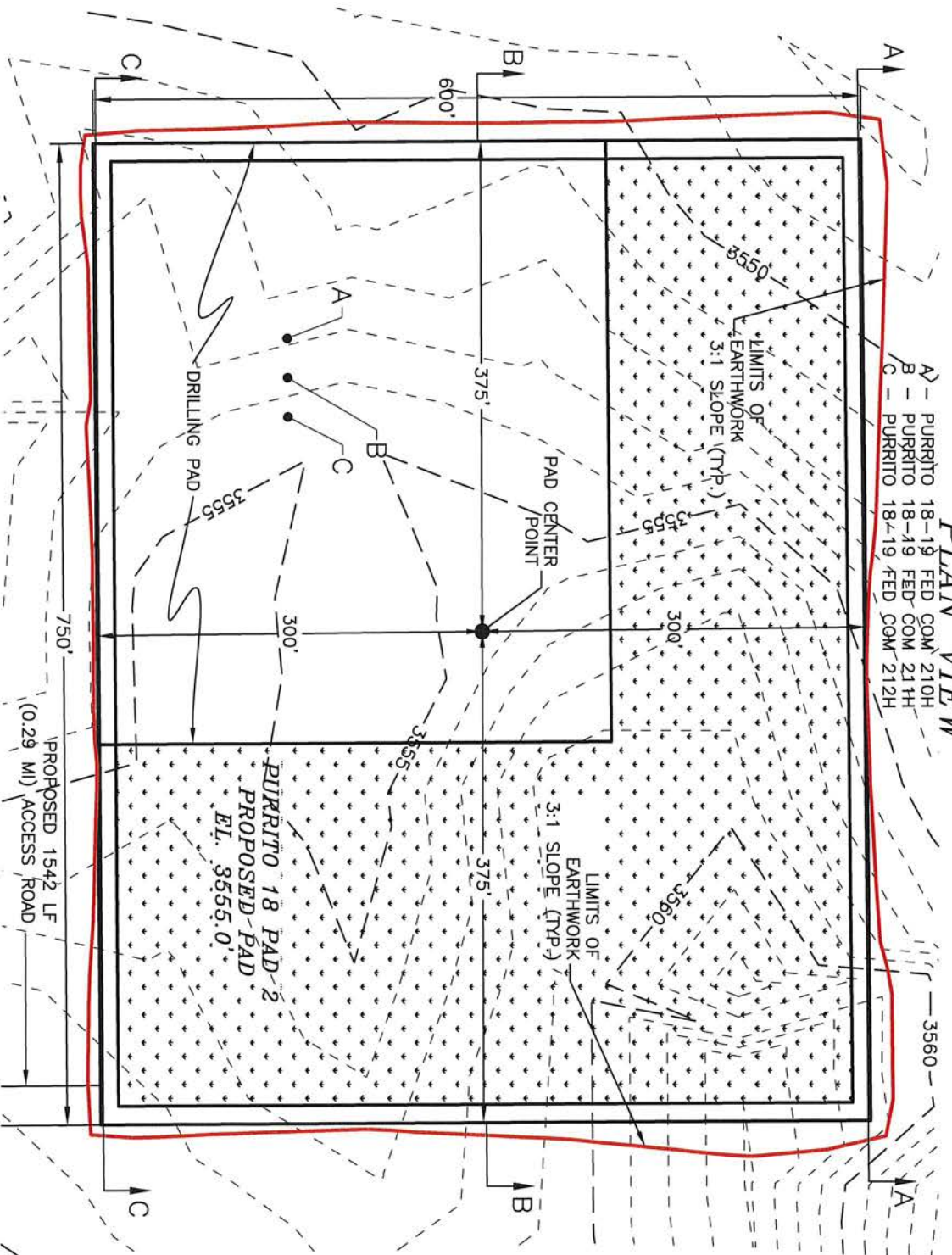
SURVEY NO. 7276

MADRON SURVEYING, INC. 301 SOUTH CANAL (575) 234-3341 CARLSBAD, NEW MEXICO



# PLAN VIEW

A - PURRITO 18-19 FED COM 210H  
 B - PURRITO 18-19 FED COM 211H  
 C - PURRITO 18-19 FED COM 212H



DEVON ENERGY PRODUCTION COMPANY, L.P.  
 GRADING PLAN AND CROSS SECTIONS  
 FOR PURRITO 18-19 FED COM 210H  
 SECTION 18, TOWNSHIP 23 SOUTH,  
 RANGE 32 EAST, N.M.P.M.  
 LEA COUNTY, STATE OF NEW MEXICO

MAY 10, 2019

MADRON SURVEYING, INC. 301 SOUTH CANAL (S/S) 234-3341 CARLSBAD, NEW MEXICO

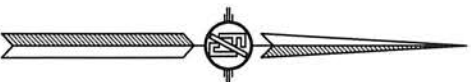
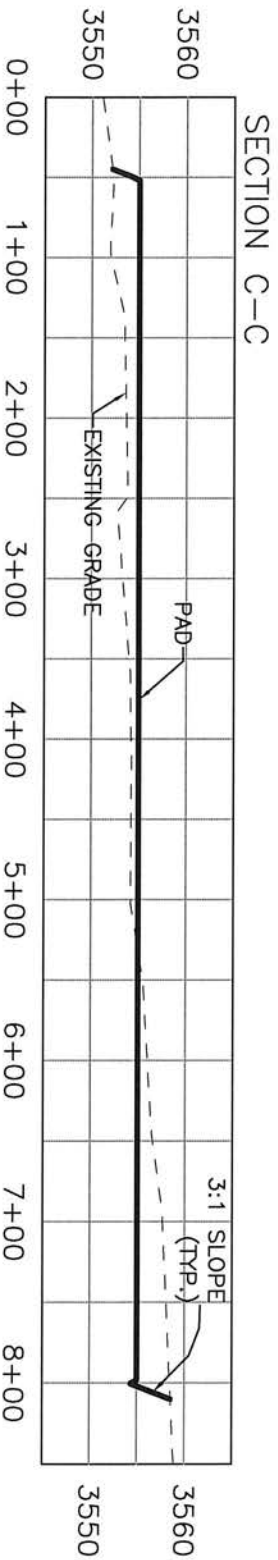
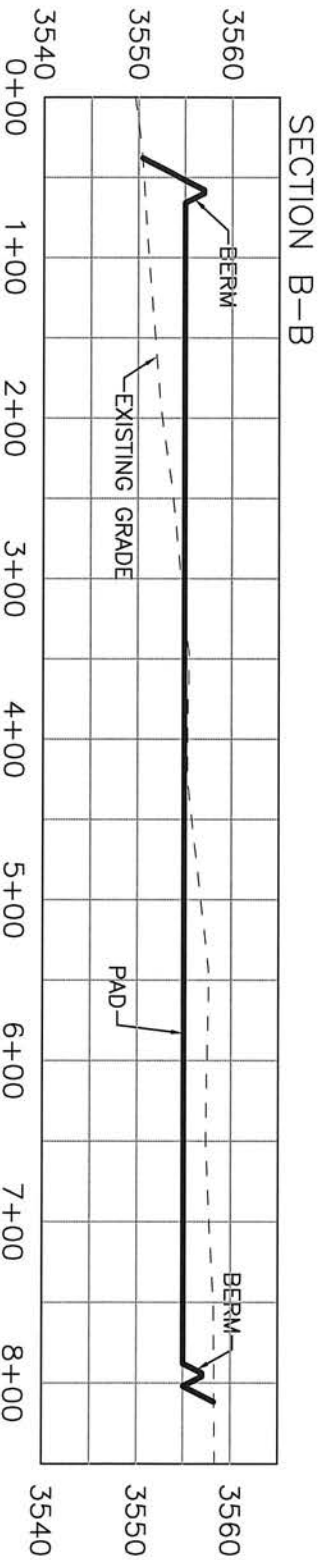
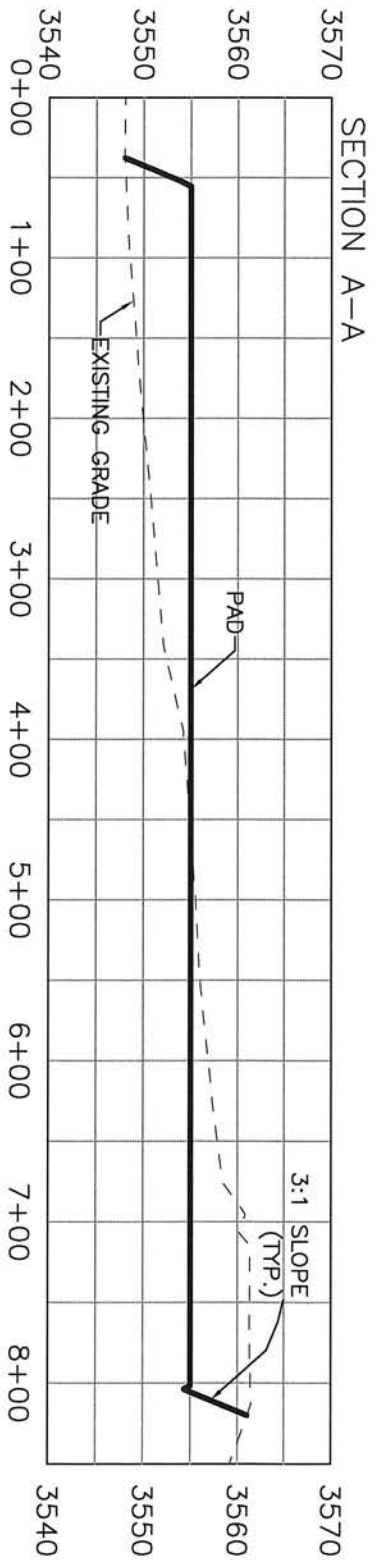
CUT	FILL	NET
23829 CU. YD	20059 CU. YD	3770 CU. YD (CUT)

EARTHWORK QUANTITIES ARE ESTIMATED

SHEET 1-2  
 SURVEY NO. 7276



# CROSS SECTIONS



DEVON ENERGY PRODUCTION COMPANY, L.P.  
GRADING PLAN AND CROSS SECTIONS  
FOR PURRITO 18-19 FED COM 210H  
SECTION 18, TOWNSHIP 23 SOUTH,  
RANGE 32 EAST, N.M.P.M.  
LEA COUNTY, STATE OF NEW MEXICO

MAY 10, 2019

MADRON SURVEYING, INC. 301 SOUTH CANAL CARLSBAD, NEW MEXICO

SHEET 2-2  
SURVEY NO. 7276

CUT	FILL	NET
23629 CU. YD	20059 CU. YD	3770 CU. YD (CUT)

EARTHWORK QUANTITIES ARE ESTIMATED





ACCESS ROAD TO THE PURRITO 18 PAD 2 ( PURRITO 18-19 FED COM 210H, 211H, 212H)

(TIE)  
N82°40'01"W  
2088.53 FT  
N89°21'06"E  
2840.72 FT  
N35°51'43"E  
839.80 FT  
BC 1916  
N89°21'58"E  
2640.54 FT  
7 8  
12 7  
13 18  
18 17  
BC 1916  
LOT 1  
S89°20'44"W  
239.62 FT  
N45°29'49"W  
49.89 FT  
N00°18'53"W  
349.67 FT  
PURRITO 18 PAD 2  
(PURRITO 18-19 FED COM 210H, 211H, 212H)  
STA 6+39.2 E.O.R.  
STA 3+99.6 PI LEFT  
STA 3+49.7 PI LEFT  
STA 0+00 B.O.R.  
PROPOSED ACCESS ROAD  
PURRITO 18 PAD 2  
EXISTING LEASE ROAD  
LOT 2  
LOT 3  
LOT 4  
SEC 18  
T.23S., R.32E.  
BLM  
S89°23'25"W  
2743.19 FT  
S89°23'25"W  
2743.19 FT  
N00°18'38"W  
2639.81 FT  
N00°19'58"W  
2636.33 FT  
N00°20'20"E  
2638.21 FT  
S00°24'57"E  
2640.93 FT  
BC 1916  
BC 1916  
BC 1916  
BC 1916  
13 18  
24 19  
18 17  
19 20  
BC 1916  
BC 1916

MADRON SURVEYING, INC. 301 SOUTH CANAL CARLSBAD, NEW MEXICO  
(575) 234-3341

*SURVEY NO. 7276.*

FILMON, F. JARAMILLO PLS. 1279

301 SOUTH CANAL  
(575) 234-3341



## ACCESS ROAD PLAT

ACCESS ROAD TO THE PURRITO 18 PAD 2 ( PURRITO 18-19 FED COM 210H, 211H, 212H)

DEVON ENERGY PRODUCTION COMPANY, L.P.  
CENTERLINE SURVEY OF AN ACCESS ROAD CROSSING  
SECTION 18, TOWNSHIP 23 SOUTH, RANGE 32 EAST, N.M.P.M.  
LEA COUNTY, STATE OF NEW MEXICO  
MAY 10, 2019

### DESCRIPTION

A STRIP OF LAND 30 FEET WIDE CROSSING BUREAU OF LAND MANAGEMENT LAND IN SECTION 18, TOWNSHIP 23 SOUTH, RANGE 32 EAST, N.M.P.M., LEA COUNTY, STATE OF NEW MEXICO AND BEING 15 FEET EACH SIDE OF THE FOLLOWING DESCRIBED CENTERLINE SURVEY:

BEGINNING AT A POINT WITHIN THE NE/4 NW/4 OF SAID SECTION 18, TOWNSHIP 23 SOUTH, RANGE 32 EAST, N.M.P.M., WHENCE THE NORTH QUARTER CORNER OF SAID SECTION 18, TOWNSHIP 23 SOUTH, RANGE 32 EAST, N.M.P.M. BEARS N35°51'43"E, A DISTANCE OF 839.80 FEET;

THENCE N00°18'53"W A DISTANCE OF 349.67 FEET TO AN ANGLE POINT OF THE LINE HEREIN DESCRIBED;

THENCE N45°29'49"W A DISTANCE OF 49.89 FEET TO AN ANGLE POINT OF THE LINE HEREIN DESCRIBED;

THENCE S89°20'44"W A DISTANCE OF 239.62 FEET THE TERMINUS OF THIS CENTERLINE SURVEY, WHENCE THE NORTHWEST CORNER OF SAID SECTION 18, TOWNSHIP 23 SOUTH, RANGE 32 EAST, N.M.P.M. BEARS N82°40'01"W, A DISTANCE OF 2088.53 FEET;

SAID STRIP OF LAND BEING 639.18 FEET OR 38.74 RODS IN LENGTH, CONTAINING 0.440 ACRES MORE OR LESS AND BEING ALLOCATED BY FORTIES AS FOLLOWS:

NE/4 NW/4 639.18 L.F. 38.74 RODS 0.440 ACRES

### GENERAL NOTES

1.) THE INTENT OF THIS ROUTE SURVEY IS TO ACQUIRE AN EASEMENT.

2.) BASIS OF BEARING AND DISTANCE IS NMSP EAST (NAD83) MODIFIED TO SURFACE COORDINATES. NAD 83 (FEET) AND NAVD 88 (FEET) COORDINATE SYSTEMS USED IN THE SURVEY.

SHEET: 2-2

MADRON SURVEYING, INC. 301 SOUTH CANAL (575) 234-3341 CARLSBAD, NEW MEXICO

### SURVEYOR CERTIFICATE

I, FILIMON F. JARAMILLO, A NEW MEXICO PROFESSIONAL SURVEYOR NO. 12797, HEREBY CERTIFY THAT I HAVE CONDUCTED AND AM RESPONSIBLE FOR THIS SURVEY, THAT THIS SURVEY IS TRUE AND CORRECT TO THE BEST OF MY KNOWLEDGE AND BELIEF, AND THAT THIS SURVEY AND PLAT MEET THE MINIMUM STANDARDS FOR LAND SURVEYING IN THE STATE OF NEW MEXICO.

IN WITNESS WHEREOF, THIS CERTIFICATE IS EXECUTED AT CARLSBAD, NEW MEXICO, THIS 16 DAY OF MAY 2019

FILIMON F. JARAMILLO REG. 12797

MADRON SURVEYING, INC.  
301 SOUTH CANAL  
CARLSBAD, NEW MEXICO 88220  
Phone (575) 234-3341

SURVEY NO. 7276

# SITE MAP

[illegible]

MADRON SURVEYING, INC. 301 SOUTH CANAL (575) 234-3341 CARLSBAD, NEW MEXICO

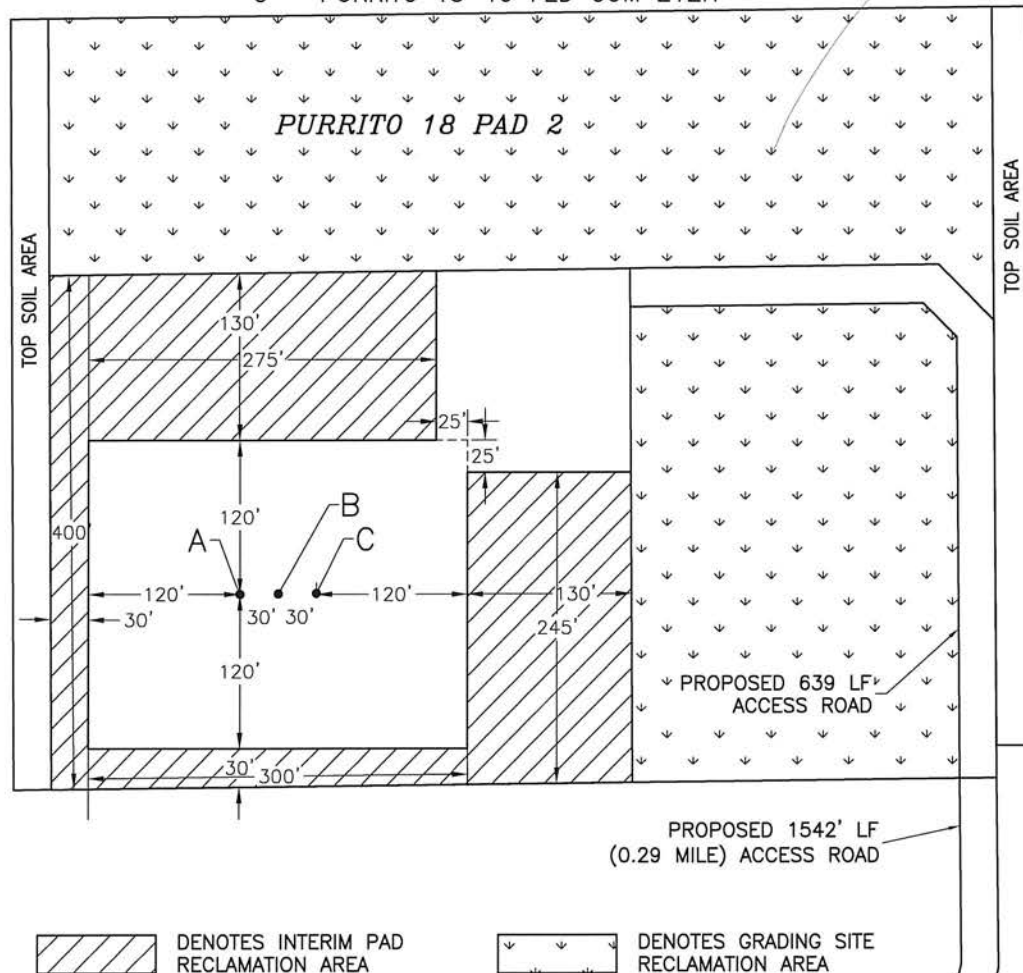
301 SOUTH CANAL  
(575) 234-3341



SECTION 18, TOWNSHIP 23 SOUTH, RANGE 32 EAST, N.M.P.M.  
LEA COUNTY, STATE OF NEW MEXICO  
INTERIM SITE BUILD PLAN

SEC. 7  
SEC. 18

A - PURRITO 18-19 FED COM 210H  
B - PURRITO 18-19 FED COM 211H  
C - PURRITO 18-19 FED COM 212H



DENOTES INTERIM PAD RECLAMATION AREA

DENOTES GRADING SITE RECLAMATION AREA

015 75 150 300  
SCALE 1" = 150'

2.028± ACRES INTERIM PAD RECLAMATION AREA  
5.666± ACRES GRADING SITE RECLAMATION AREA  
2.637± ACRES NON-RECLAIMED AREA  
10.331± ACRES PURRITO 18 PAD 2

DEVON ENERGY PRODUCTION COMPANY, L.P.  
**PURRITO 18-19 FED COM 210H**  
LOCATED 525 FT. FROM THE NORTH LINE  
AND 1760 FT. FROM THE WEST LINE OF  
SECTION 18, TOWNSHIP 23 SOUTH,  
RANGE 32 EAST, N.M.P.M.  
LEA COUNTY, STATE OF NEW MEXICO  
LAND STATUS: BLM

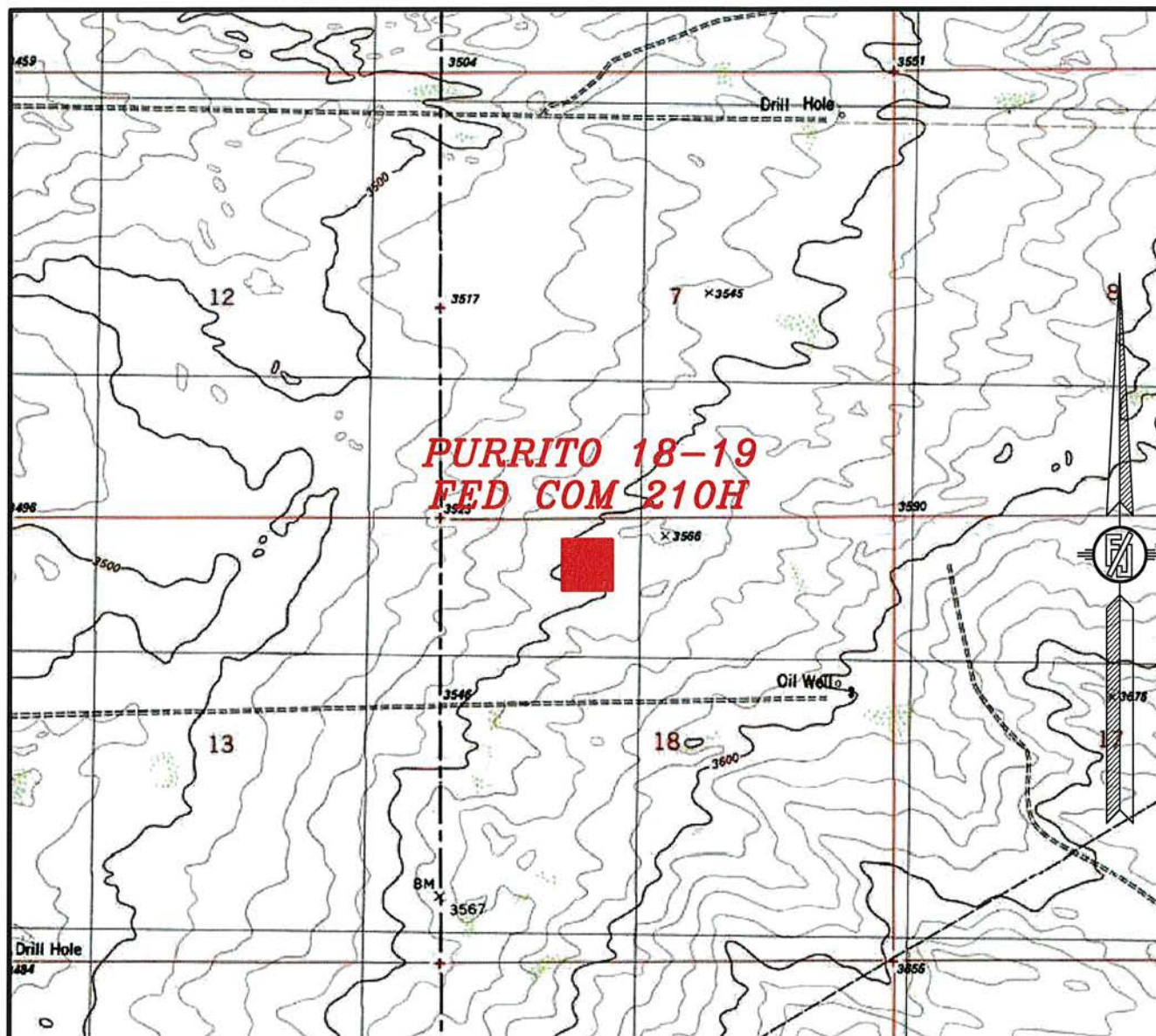
MAY 10, 2019

SURVEY NO. 7276

MADRON SURVEYING, INC. 301 SOUTH CANAL CARLSBAD, NEW MEXICO  
(575) 234-3341



SECTION 18, TOWNSHIP 23 SOUTH, RANGE 32 EAST, N.M.P.M.  
LEA COUNTY, STATE OF NEW MEXICO  
LOCATION VERIFICATION MAP



USGS QUAD MAP:  
BOOTLEG RIDGE

NOT TO SCALE

DEVON ENERGY PRODUCTION COMPANY, L.P.  
**PURRITO 18-19 FED COM 210H**  
LOCATED 525 FT. FROM THE NORTH LINE  
AND 1760 FT. FROM THE WEST LINE OF  
SECTION 18, TOWNSHIP 23 SOUTH,  
RANGE 32 EAST, N.M.P.M.  
LEA COUNTY, STATE OF NEW MEXICO  
LAND STATUS: BLM

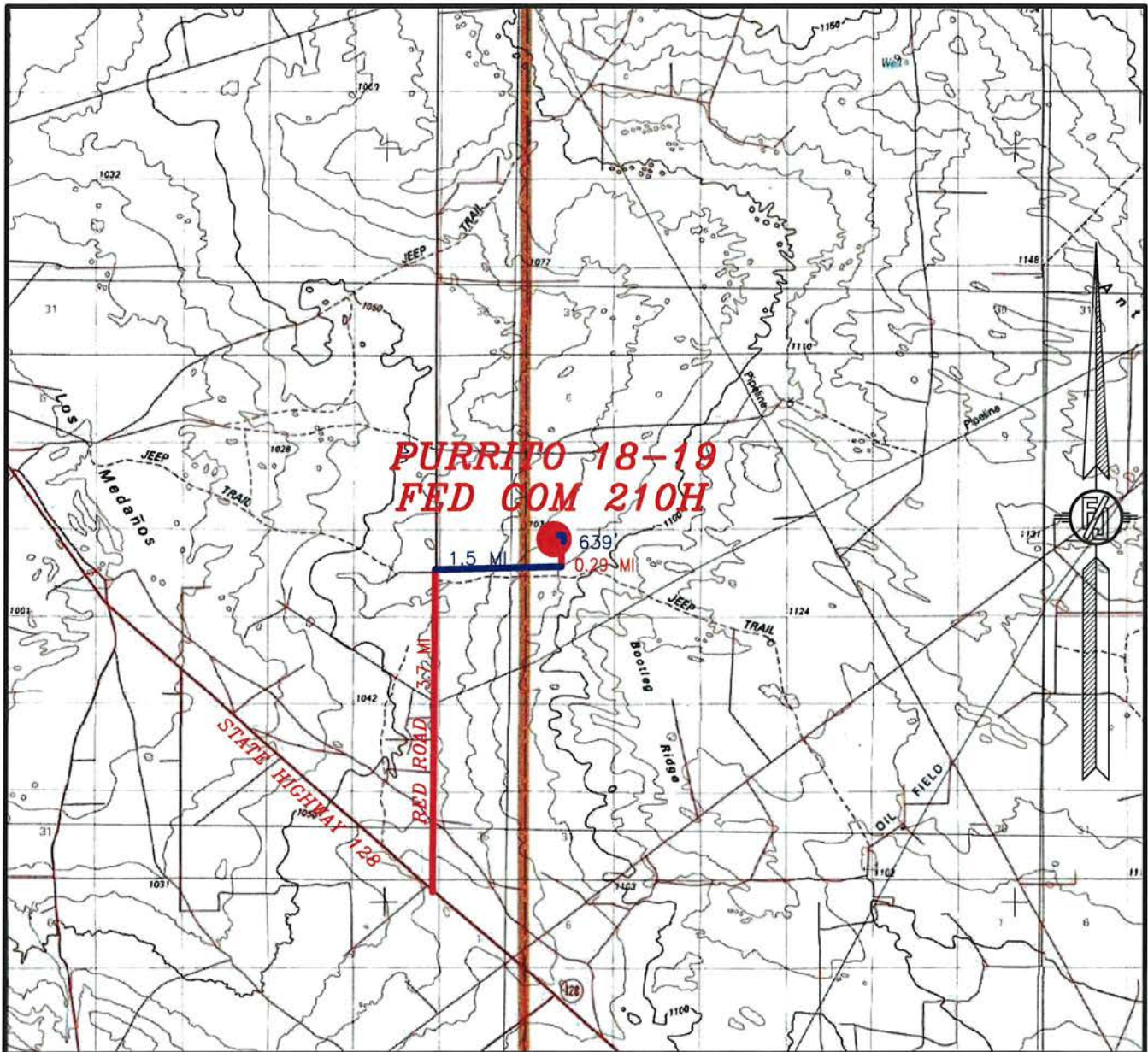
MAY 10, 2019

SURVEY NO. 7276

MADRON SURVEYING, INC. 301 SOUTH CANAL CARLSBAD, NEW MEXICO  
(575) 234-3341



SECTION 18, TOWNSHIP 23 SOUTH, RANGE 32 EAST, N.M.P.M.  
LEA COUNTY, STATE OF NEW MEXICO  
VICINITY MAP



DISTANCES IN MILES

NOT TO SCALE

DEVON ENERGY PRODUCTION COMPANY, L.P.

**PURRITO 18-19 FED COM 210H**

LOCATED 525 FT. FROM THE NORTH LINE

AND 1760 FT. FROM THE WEST LINE OF

SECTION 18, TOWNSHIP 23 SOUTH,

RANGE 32 EAST, N.M.P.M.

LEA COUNTY, STATE OF NEW MEXICO

LAND STATUS: BLM

**DIRECTIONS TO LOCATION**

FROM THE INTERSECTION OF STATE HIGHWAY 128 AND RED ROAD GO NORTH ON RED ROAD APPROX. 3.7 MILES TO A LEASE ROAD ON RIGHT (EAST), TURN RIGHT ON LEASE ROAD AND GO APPROX. 1.5 MILES TO A ROAD LATH WITH RED & WHITE FLAGGING ON THE LEFT SIDE (NORTH) OF LEASE ROAD, TURN LEFT AND GO APPROX. 1542' (0.29 OF A MILE) TO THE SOUTHEAST PAD CORNER FOR THE PURRITO 18 PAD 2, CONTINUE NORTH-NORTHWEST-WEST 639' TO THE NORTHEAST PAD CORNER FOR THIS LOCATION.

MAY 10, 2019

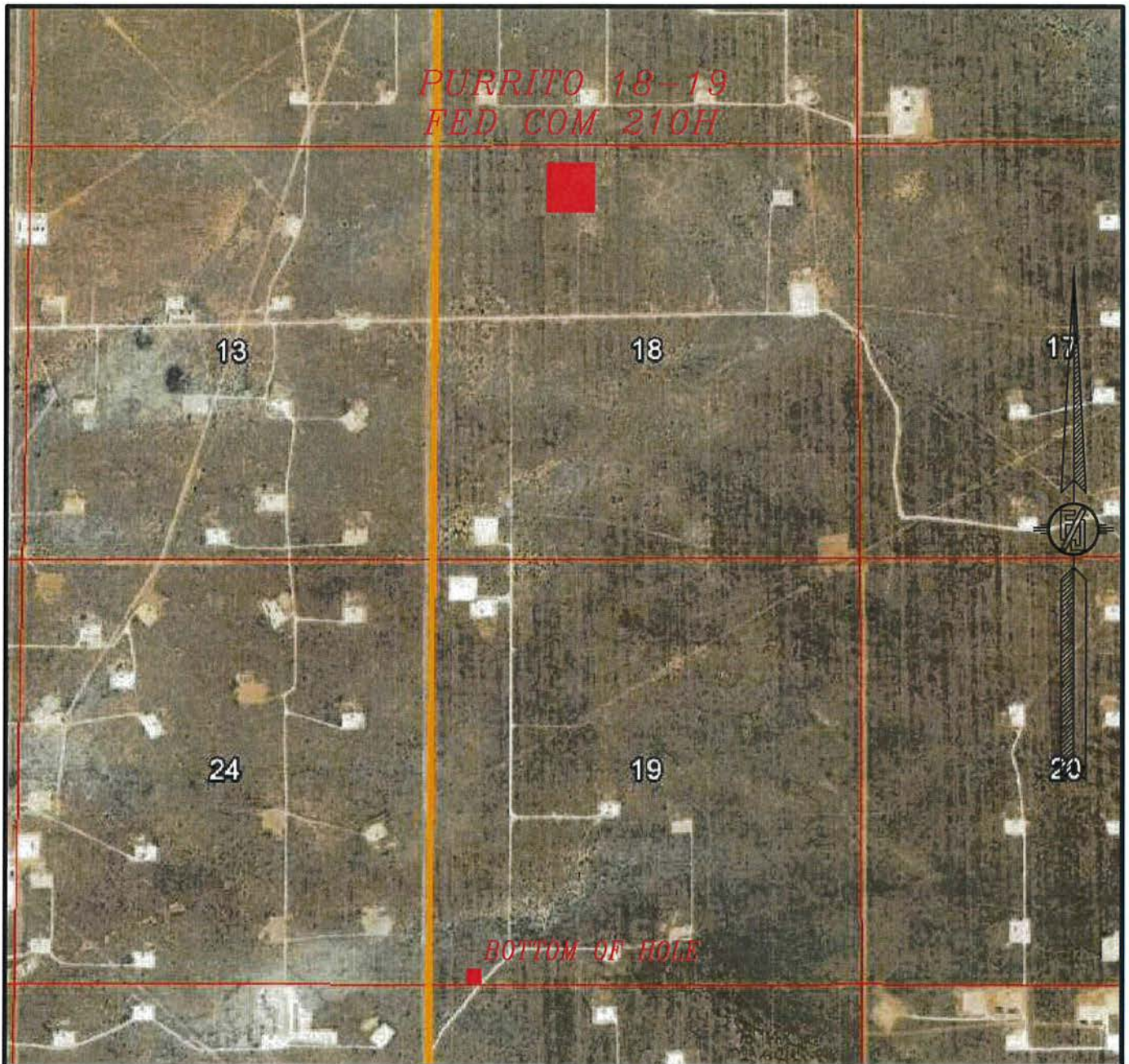
SURVEY NO. 7276

MADRON SURVEYING, INC. 301 SOUTH CANAL  
(575) 234-3341

CARLSBAD, NEW MEXICO



SECTION 18, TOWNSHIP 23 SOUTH, RANGE 32 EAST, N.M.P.M.  
LEA COUNTY, STATE OF NEW MEXICO  
**AERIAL PHOTO**



NOT TO SCALE  
AERIAL PHOTO:  
GOOGLE EARTH  
NOVEMBER 2017

**DEVON ENERGY PRODUCTION COMPANY, L.P.**  
**PURRITO 18-19 FED COM 210H**  
LOCATED 525 FT. FROM THE NORTH LINE  
AND 1760 FT. FROM THE WEST LINE OF  
SECTION 18, TOWNSHIP 23 SOUTH,  
RANGE 32 EAST, N.M.P.M.  
LEA COUNTY, STATE OF NEW MEXICO  
LAND STATUS: BLM

MAY 10, 2019

SURVEY NO. 7276

MADRON SURVEYING, INC. 301 SOUTH CANAL CARLSBAD, NEW MEXICO  
(575) 234-3341



SECTION 18, TOWNSHIP 23 SOUTH, RANGE 32 EAST, N.M.P.M.  
LEA COUNTY, STATE OF NEW MEXICO  
ACCESS AERIAL ROUTE MAP



NOT TO SCALE  
AERIAL PHOTO:  
GOOGLE EARTH  
NOVEMBER 2017

DEVON ENERGY PRODUCTION COMPANY, L.P.

**PURRITO 18-19 FED COM 210H**

LOCATED 525 FT. FROM THE NORTH LINE  
AND 1760 FT. FROM THE WEST LINE OF  
SECTION 18, TOWNSHIP 23 SOUTH,  
RANGE 32 EAST, N.M.P.M.  
LEA COUNTY, STATE OF NEW MEXICO  
LAND STATUS: BLM

MAY 10, 2019

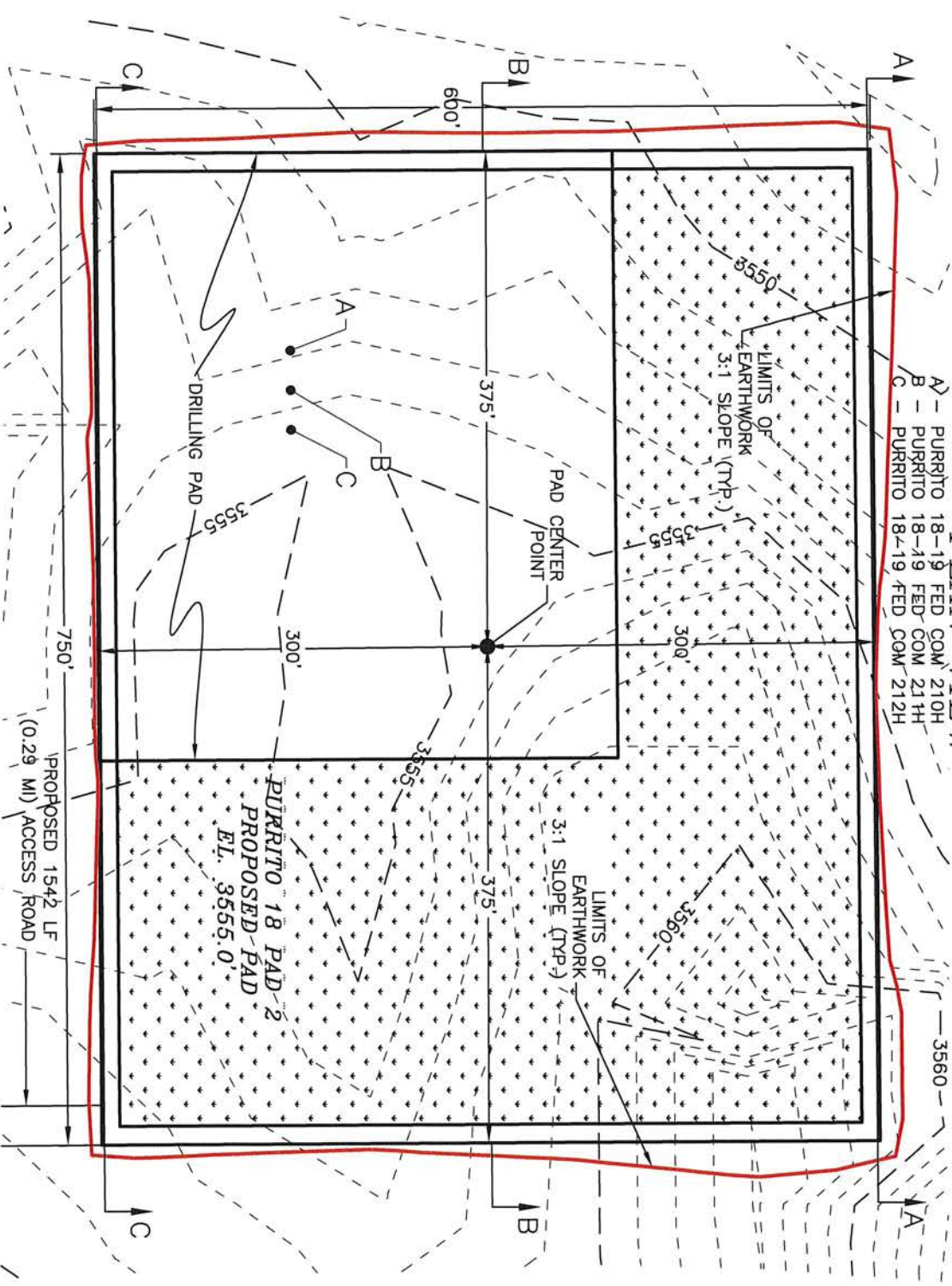
SURVEY NO. 7276

MADRON SURVEYING, INC. 301 SOUTH CANAL (575) 234-3341 CARLSBAD, NEW MEXICO



# PLAN VIEW

- A - PURRITO 18-19 FED COM 210H
- B - PURRITO 18-19 FED COM 211H
- C - PURRITO 18-19 FED COM 212H



DEVON ENERGY PRODUCTION COMPANY, L.P.  
 GRADING PLAN AND CROSS SECTIONS  
 FOR PURRITO 18-19 FED COM 210H  
 SECTION 18, TOWNSHIP 23 SOUTH,  
 RANGE 32 EAST, N.M.P.M.  
 LEA COUNTY, STATE OF NEW MEXICO

MAY 10, 2019

MADRON SURVEYING, INC. 301 SOUTH CANAL (S/S) 234-3341 CARLSBAD, NEW MEXICO

CUT	FILL	NET
23829 CU. YD	20059 CU. YD	3770 CU. YD (CUT)

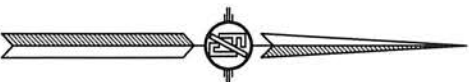
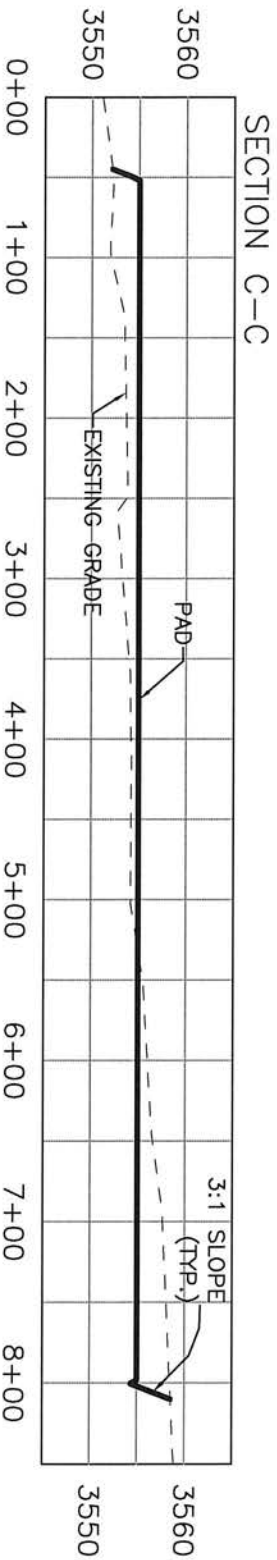
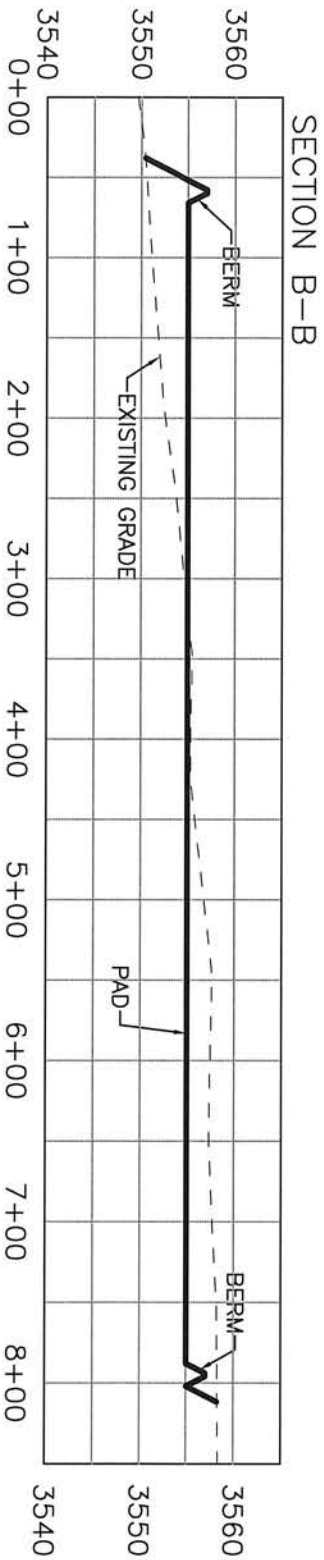
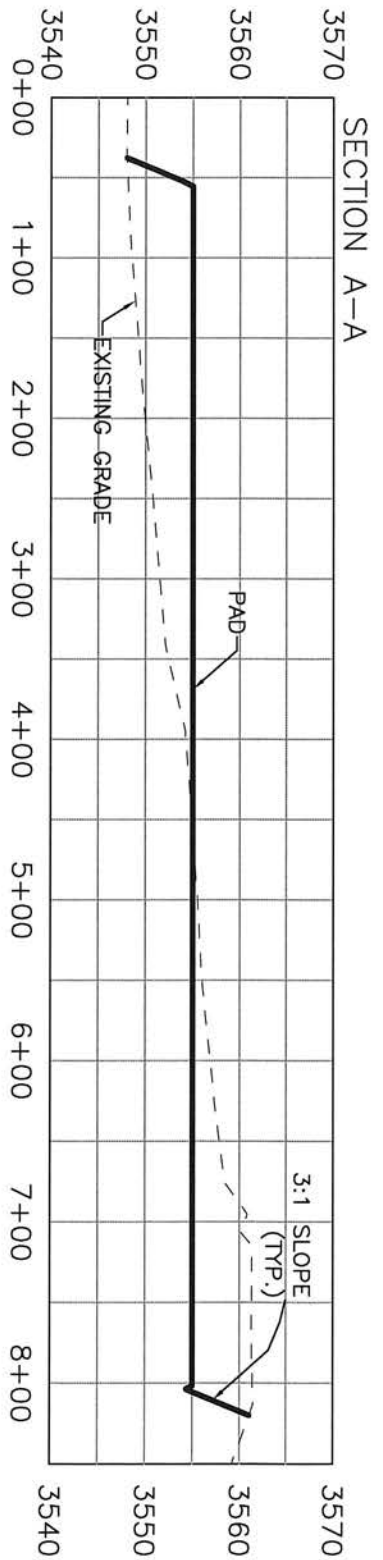
EARTHWORK QUANTITIES ARE ESTIMATED

SHEET 1-2  
 SURVEY NO. 7276





# CROSS SECTIONS



DEVON ENERGY PRODUCTION COMPANY, L.P.  
GRADING PLAN AND CROSS SECTIONS  
FOR PURRITO 18-19 FED COM 210H  
SECTION 18, TOWNSHIP 23 SOUTH,  
RANGE 32 EAST, N.M.P.M.  
LEA COUNTY, STATE OF NEW MEXICO

MAY 10, 2019

MADRON SURVEYING, INC. 301 SOUTH CANAL CARLSBAD, NEW MEXICO

SHEET 2-2  
SURVEY NO. 7276

CUT	FILL	NET
23629 CU. YD	20059 CU. YD	3770 CU. YD (CUT)

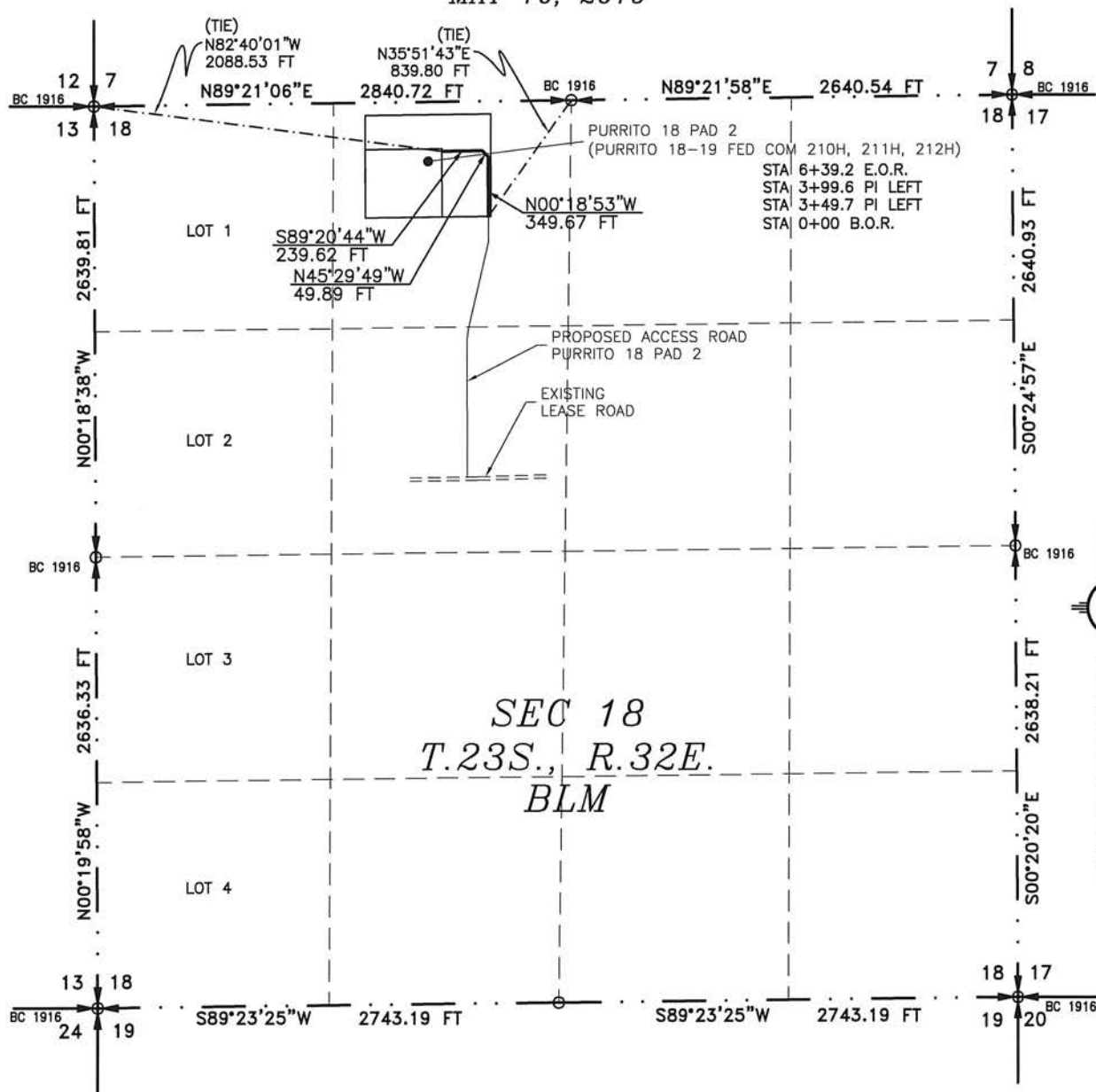
EARTHWORK QUANTITIES ARE ESTIMATED



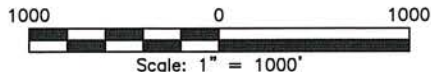
# ACCESS ROAD PLAT

ACCESS ROAD TO THE PURRITO 18 PAD 2 ( PURRITO 18-19 FED COM 210H, 211H, 212H)

DEVON ENERGY PRODUCTION COMPANY, L.P.  
CENTERLINE SURVEY OF AN ACCESS ROAD CROSSING  
SECTION 18, TOWNSHIP 23 SOUTH, RANGE 32 EAST, N.M.P.M.  
LEA COUNTY, STATE OF NEW MEXICO  
MAY 10, 2019



SEE NEXT SHEET (1-2) FOR DESCRIPTION



## GENERAL NOTES

1.) THE INTENT OF THIS ROUTE SURVEY IS TO ACQUIRE AN EASEMENT.

2.) BASIS OF BEARING AND DISTANCE IS NMSP EAST (NAD83) MODIFIED TO SURFACE COORDINATES. NAD 83 (FEET) AND NAVD 88 (FEET) COORDINATE SYSTEMS USED IN THE SURVEY.

SHEET: 1-2

MADRON SURVEYING, INC. CARLSBAD, NEW MEXICO

## SURVEYOR CERTIFICATE

I, FILIMON F. JARAMILLO, A NEW MEXICO PROFESSIONAL SURVEYOR NO. 12797, HEREBY CERTIFY THAT I HAVE CONDUCTED AND AM RESPONSIBLE FOR THIS SURVEY, THAT THIS SURVEY IS TRUE AND CORRECT TO THE BEST OF MY KNOWLEDGE AND BELIEF, AND THAT THIS SURVEY AND PLAT MEET THE MINIMUM STANDARDS FOR LAND SURVEYING IN THE STATE OF NEW MEXICO.

IN WITNESS WHEREOF, THIS CERTIFICATE IS EXECUTED AT CARLSBAD,

NEW MEXICO, THIS 16 DAY OF MAY 2019

FILIMON F. JARAMILLO, PLS. 12797

MADRON SURVEYING, INC.  
301 SOUTH CANAL  
CARLSBAD, NEW MEXICO 88220  
Phone (575) 234-3341

SURVEY NO. 7276



## ACCESS ROAD PLAT

ACCESS ROAD TO THE PURRITO 18 PAD 2 (PURRITO 18-19 FED COM 210H, 211H, 212H)

DEVON ENERGY PRODUCTION COMPANY, L.P.  
CENTERLINE SURVEY OF AN ACCESS ROAD CROSSING  
SECTION 18, TOWNSHIP 23 SOUTH, RANGE 32 EAST, N.M.P.M.  
LEA COUNTY, STATE OF NEW MEXICO  
MAY 10, 2019

### DESCRIPTION

A STRIP OF LAND 30 FEET WIDE CROSSING BUREAU OF LAND MANAGEMENT LAND IN SECTION 18, TOWNSHIP 23 SOUTH, RANGE 32 EAST, N.M.P.M., LEA COUNTY, STATE OF NEW MEXICO AND BEING 15 FEET EACH SIDE OF THE FOLLOWING DESCRIBED CENTERLINE SURVEY:

BEGINNING AT A POINT WITHIN THE NE/4 NW/4 OF SAID SECTION 18, TOWNSHIP 23 SOUTH, RANGE 32 EAST, N.M.P.M., WHENCE THE NORTH QUARTER CORNER OF SAID SECTION 18, TOWNSHIP 23 SOUTH, RANGE 32 EAST, N.M.P.M. BEARS N35°51'43"E, A DISTANCE OF 839.80 FEET;

THENCE N00°18'53"W A DISTANCE OF 349.67 FEET TO AN ANGLE POINT OF THE LINE HEREIN DESCRIBED;

THENCE N45°29'49"W A DISTANCE OF 49.89 FEET TO AN ANGLE POINT OF THE LINE HEREIN DESCRIBED;

THENCE S89°20'44"W A DISTANCE OF 239.62 FEET THE TERMINUS OF THIS CENTERLINE SURVEY, WHENCE THE NORTHWEST CORNER OF SAID SECTION 18, TOWNSHIP 23 SOUTH, RANGE 32 EAST, N.M.P.M. BEARS N82°40'01"W, A DISTANCE OF 2088.53 FEET;

SAID STRIP OF LAND BEING 639.18 FEET OR 38.74 RODS IN LENGTH, CONTAINING 0.440 ACRES MORE OR LESS AND BEING ALLOCATED BY FORTIES AS FOLLOWS:

NE/4 NW/4 639.18 L.F. 38.74 RODS 0.440 ACRES

### GENERAL NOTES

1.) THE INTENT OF THIS ROUTE SURVEY IS TO ACQUIRE AN EASEMENT.

2.) BASIS OF BEARING AND DISTANCE IS NMSP EAST (NAD83) MODIFIED TO SURFACE COORDINATES. NAD 83 (FEET) AND NAVD 88 (FEET) COORDINATE SYSTEMS USED IN THE SURVEY.

SHEET: 2-2

MADRON SURVEYING, INC. 301 SOUTH CANAL (575) 234-3341 CARLSBAD, NEW MEXICO

### SURVEYOR CERTIFICATE

I, FILIMON F. JARAMILLO, A NEW MEXICO PROFESSIONAL SURVEYOR NO. 12797, HEREBY CERTIFY THAT I HAVE CONDUCTED AND AM RESPONSIBLE FOR THIS SURVEY, THAT THIS SURVEY IS TRUE AND CORRECT TO THE BEST OF MY KNOWLEDGE AND BELIEF, AND THAT THIS SURVEY AND PLAT MEET THE MINIMUM STANDARDS FOR LAND SURVEYING IN THE STATE OF NEW MEXICO.

IN WITNESS WHEREOF, THIS CERTIFICATE IS EXECUTED AT CARLSBAD, NEW MEXICO, THIS 16 DAY OF MAY 2019

FILIMON F. JARAMILLO REG. 12797

MADRON SURVEYING, INC.  
301 SOUTH CANAL  
CARLSBAD, NEW MEXICO 88220  
Phone (575) 234-3341

SURVEY NO. 7276