

DISTRICT I
1625 N. French Dr., Hobbs, NM 88240
Phone: (575) 393-6161 Fax: (575) 393-0720

DISTRICT II
811 S. First St., Artesia, NM 88210
Phone: (575) 748-1283 Fax: (575) 748-9720

DISTRICT III
1000 Rio Brazos Road, Aztec, NM 87410
Phone: (505) 334-6178 Fax: (505) 334-6170

DISTRICT IV
1220 S. St. Francis Dr., Santa Fe, NM 87505
Phone: (505) 476-3460 Fax: (505) 476-3462

State of New Mexico
Energy, Minerals & Natural Resources Department
OIL CONSERVATION DIVISION
1220 South St. Francis Dr.
Santa Fe, New Mexico 87505

Form C-102
Revised August 1, 2011
Submit one copy to appropriate
District Office

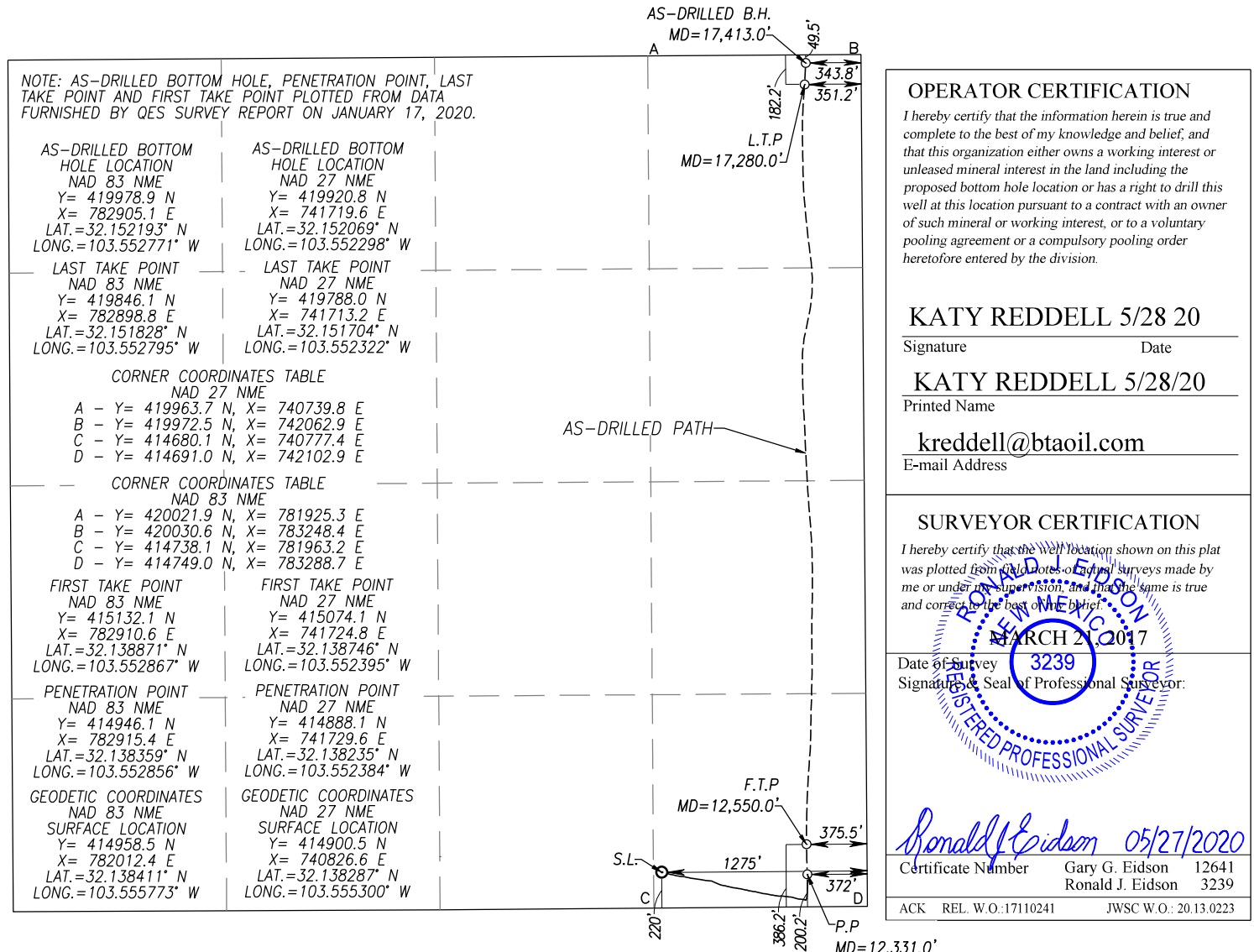
EXAMENED REPORT

AS-DRILLED PLAT

WELL LOCATION AND ACREAGE DEDICATION PLAT

API Number 30-025-45497		Pool Code 98180		Pool Name WC-025 G-09 S253309P;UPR WOLFCAMP					
Property Code 317432		Property Name VACA DRAW 9418 10 FEDERAL						Well Number 19H	
OGRID No. 260297		Operator Name BTA OIL PRODUCERS, LLC						Elevation 3377'	
Surface Location									
UL or lot No. P	Section 10	Township 25-S	Range 33-E	Lot Idn	Feet from the 220	North/South line SOUTH	Feet from the 1275	East/West line EAST	County LEA
As-Drilled Bottom Hole Location If Different From Surface									
UL or lot No. A	Section 10	Township 25-S	Range 33-E	Lot Idn	Feet from the 49.5	North/South line NORTH	Feet from the 343.8	East/West line EAST	County LEA
Penetration Point Location									
UL or lot No. P	Section 10	Township 25-S	Range 33-E	Lot Idn	Feet from the 200.2	North/South line SOUTH	Feet from the 372	East/West line EAST	County LEA
Dedicated Acres 160		Joint or Infill		Consolidation Code		Order No.			

NO ALLOWABLE WILL BE ASSIGNED TO THIS COMPLETION UNTIL ALL INTERESTS HAVE BEEN CONSOLIDATED OR A NON-STANDARD UNIT HAS BEEN APPROVED BY THE DIVISION



Intent ☐ As Drilled ☒API #
30-025-

Operator Name: BTA OIL PRODUCERS, LLC	Property Name: VACA DRAW 9418 10 FEDERAL	Well Number 19H
------------------------------------------	---------------------------------------------	--------------------

Kick Off Point (KOP)

UL	Section 10	Township 25S	Range 33E	Lot	Feet 220	From N/S SOUTH	Feet 1305	From E/W EAST	County LEA
Latitude 32.138411					Longitude 103.555773			NAD 83	

First Take Point (FTP)

UL	Section 10	Township 25S	Range 33E	Lot	Feet 386.2	From N/S SOUTH	Feet 375.5	From E/W EAST	County LEA
Latitude 32.138871					Longitude 103.552867			NAD 83	

Last Take Point (LTP)

UL	Section 10	Township 25S	Range 33E	Lot	Feet 182.2	From N/S NORTH	Feet 351.2	From E/W EAST	County LEA
Latitude 32.151828					Longitude 103.552795			NAD 83	

Is this well the defining well for the Horizontal Spacing Unit? ☐ NOIs this well an infill well? ☐ YES

If infill is yes please provide API if available, Operator Name and well number for Defining well for Horizontal Spacing Unit.

API #
30-025-45496

Operator Name: BTA OIL PRODUCERS, LLC	Property Name: VACA DRAW 9418 10 FEDERAL	Well Number 16H
------------------------------------------	---------------------------------------------	--------------------