

UNITED STATES
DEPARTMENT OF THE INTERIOR
BUREAU OF LAND MANAGEMENT

Operator

FORM APPROVED
OMB NO. 1004-0137
Expires: January 31, 2018**SUNDRY NOTICES AND REPORTS ON WELLS**
*Do not use this form for proposals to drill or to re-enter an abandoned well. Use form 3160-3 (APD) for such proposals.*5. Lease Serial No.
NMMN128366

6. If Indian, Allottee or Tribe Name

7. If Unit or CA/Agreement, Name and/or No.

SUBMIT IN TRIPLICATE - Other instructions on page 28. Well Name and No.
BLACK PEARL 1 FEDERAL 2H9. API Well No.
30-025-42293-00-S110. Field and Pool or Exploratory Area
LEA-BONE SPRING11. County or Parish, State
LEA COUNTY, NM

1. Type of Well

☒ Oil Well ☐ Gas Well ☐ Other2. Name of Operator
COG OPERATING LLCContact: JEANETTE BARRON
E-Mail: JBARRON@CONCHO.COM3a. Address
ONE CONCHO CENTER 600 W ILLINOIS AVENUE
MIDLAND, TX 79701-42873b. Phone No. (include area code)
Ph: 575-748-6974

4. Location of Well (Footage, Sec., T., R., M., or Survey Description)

Sec 1 T20S R34E Lot 1 0190FNL 1090FEL
32.608910 N Lat, 103.508204 W Lon**12. CHECK THE APPROPRIATE BOX(ES) TO INDICATE NATURE OF NOTICE, REPORT, OR OTHER DATA**

TYPE OF SUBMISSION	TYPE OF ACTION			
<input checked="" type="checkbox"/> Notice of Intent	<input type="checkbox"/> Acidize	<input type="checkbox"/> Deepen	<input type="checkbox"/> Production (Start/Resume)	<input type="checkbox"/> Water Shut-Off
<input type="checkbox"/> Subsequent Report	<input type="checkbox"/> Alter Casing	<input type="checkbox"/> Hydraulic Fracturing	<input type="checkbox"/> Reclamation	<input type="checkbox"/> Well Integrity
<input type="checkbox"/> Final Abandonment Notice	<input type="checkbox"/> Casing Repair	<input type="checkbox"/> New Construction	<input type="checkbox"/> Recomplete	<input checked="" type="checkbox"/> Other
	<input type="checkbox"/> Change Plans	<input type="checkbox"/> Plug and Abandon	<input type="checkbox"/> Temporarily Abandon	Production Facility Changes
	<input type="checkbox"/> Convert to Injection	<input type="checkbox"/> Plug Back	<input type="checkbox"/> Water Disposal	

13. Describe Proposed or Completed Operation: Clearly state all pertinent details, including estimated starting date of any proposed work and approximate duration thereof. If the proposal is to deepen directionally or recomple horizontally, give subsurface locations and measured and true vertical depths of all pertinent markers and zones. Attach the Bond under which the work will be performed or provide the Bond No. on file with BLM/BIA. Required subsequent reports must be filed within 30 days following completion of the involved operations. If the operation results in a multiple completion or recomple in a new interval, a Form 3160-4 must be filed once testing has been completed. Final Abandonment Notices must be filed only after all requirements, including reclamation, have been completed and the operator has determined that the site is ready for final inspection.

COG OPERATING LLC RESPECTFULLY REQUESTS DESIGNATION OF GAS FACILITY MEASUREMENT POINTS FOR BLACK PEARL 1 FEDERAL 3H & 4H BATTERY.

THE GAS FACILITY MEASUREMENT POINT IS GAS SALES METER # 1181283 MEETS API AND AGA STANDARDS AND WILL MEASURE AND BE CALIBRATED ACCORDING TO ALL FEDERAL REQUIREMENTS AND REGULATIONS.

BLACK PEARL 1 FEDERAL 2H - 30-025-42293
BLACK PEARL 1 FEDERAL 3H - 30-025-42294
BLACK PEARL 1 FEDERAL 4H - 30-025-42295

PLEASE SEE ATTACHED SITE FACILITY DIAGRAM

14. I hereby certify that the foregoing is true and correct.

Electronic Submission #519104 verified by the BLM Well Information System

For COG OPERATING LLC, sent to the Hobbs

Committed to AFMSS for processing by DEBORAH MCKINNEY on 06/17/2020 (20DLM0375SE)

Name (Printed/Typed) JEANETTE BARRON

Title REGULATORY ANALYST

Signature (Electronic Submission)

Date 06/16/2020

THIS SPACE FOR FEDERAL OR STATE OFFICE USE**ACCEPTED FOR RECORD**

JUN 17 2020

BUREAU OF LAND MANAGEMENT
CARLSBAD FIELD OFFICE

Approved By

Title

Conditions of approval, if any, are attached. Approval of this notice does not warrant or certify that the applicant holds legal or equitable title to those rights in the subject lease which would entitle the applicant to conduct operations thereon.

Office

Title 18 U.S.C. Section 1001 and Title 43 U.S.C. Section 1212, make it a crime for any person knowingly and willfully to make to any department or agency of the United States any false, fictitious or fraudulent statements or representations as to any matter within its jurisdiction.

(Instructions on page 2)

**** BLM REVISED ** BLM REVISED ** BLM REVISED ** BLM REVISED ** BLM REVISED ****

Accepted - KMS NMOCD

BLACK PEARL 1 FEDERAL 3H & 4H BATTERY
SEC: D1/T205/R34E, UNIT D
COORDS: 37.609256, -103.51839
LEA COUNTY, NM

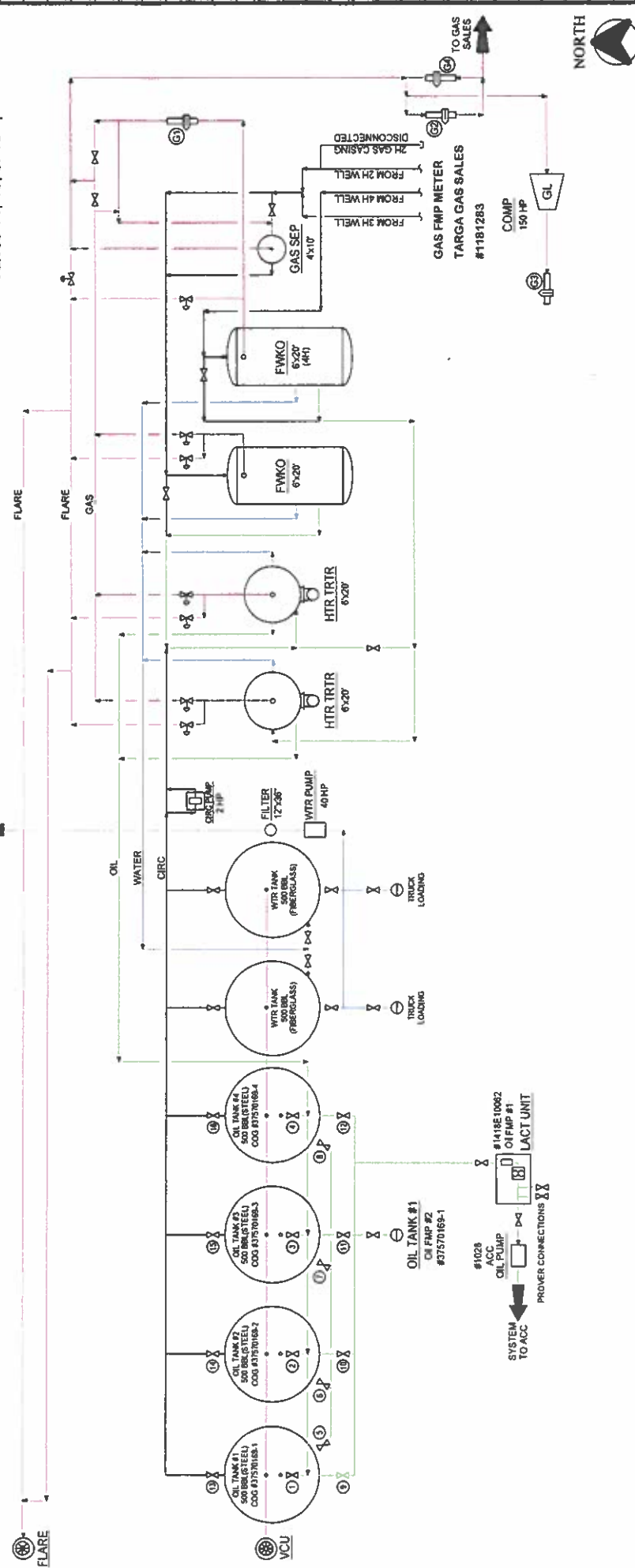
WELLS:
BLACK PEARL 1 FEDERAL #002H: 30-025-42293
BLACK PEARL 1 FEDERAL #003H: 30-025-42294
BLACK PEARL 1 FEDERAL #004H: 30-025-42295

METERS
4H Test Meter
(G1) # 39022159
Targa Gas Sales Meter
(G2) # 1181283
4H L&L Gas Meter
(G3) # 39022168
Targa Buy Back Meter
(G4) # 118100122

Production Phase - Oil Tank #1
- Valve 1 open
- Valves 2, 3, and 4 closed
- Valves 5, 6, 7, and 8 open
- Valves 9, 10, 11, and 12 closed
- Valve 13 open
- Valves 14, 15, and 16 closed

Sales Phase - Oil Tank #1
- Valve 1 closed
- Valves 2, 3, or 4 open
- Valve 5 closed
- Valves 6, 7, and 8 open
- Valve 9 open
- Valves 10, 11, and 12 closed
- Valve 13 closed
- Valves 14, 15, or 16 open

TO SWD
SYSTEM



REVISIONS				ENGINEERING RECORD			
NO.	DATE	DESCRIPTION	BY	CHK.	APP.	DATE	DATE
1	06/17/18	ISSUE FOR APPROVAL	BY	CHK.	APP.	06/17/18	06/17/18
2	06/17/18	REVISED AND FIELD CORRECTION	BY	CHK.	APP.	06/17/18	06/17/18
3	11/29/18	REVISED AND FIELD CORRECTION	BY	CHK.	APP.	11/29/18	11/29/18
4			BY	CHK.	APP.		
5			BY	CHK.	APP.		
6			BY	CHK.	APP.		
7			BY	CHK.	APP.		
8			BY	CHK.	APP.		
9			BY	CHK.	APP.		
10			BY	CHK.	APP.		
11			BY	CHK.	APP.		
12			BY	CHK.	APP.		
13			BY	CHK.	APP.		
14			BY	CHK.	APP.		
15			BY	CHK.	APP.		
16			BY	CHK.	APP.		
17			BY	CHK.	APP.		
18			BY	CHK.	APP.		
19			BY	CHK.	APP.		
20			BY	CHK.	APP.		
21			BY	CHK.	APP.		
22			BY	CHK.	APP.		
23			BY	CHK.	APP.		
24			BY	CHK.	APP.		
25			BY	CHK.	APP.		
26			BY	CHK.	APP.		
27			BY	CHK.	APP.		
28			BY	CHK.	APP.		
29			BY	CHK.	APP.		
30			BY	CHK.	APP.		
31			BY	CHK.	APP.		
32			BY	CHK.	APP.		
33			BY	CHK.	APP.		
34			BY	CHK.	APP.		
35			BY	CHK.	APP.		
36			BY	CHK.	APP.		
37			BY	CHK.	APP.		
38			BY	CHK.	APP.		
39			BY	CHK.	APP.		
40			BY	CHK.	APP.		
41			BY	CHK.	APP.		
42			BY	CHK.	APP.		
43			BY	CHK.	APP.		
44			BY	CHK.	APP.		
45			BY	CHK.	APP.		
46			BY	CHK.	APP.		
47			BY	CHK.	APP.		
48			BY	CHK.	APP.		
49			BY	CHK.	APP.		
50			BY	CHK.	APP.		
51			BY	CHK.	APP.		
52			BY	CHK.	APP.		
53			BY	CHK.	APP.		
54			BY	CHK.	APP.		
55			BY	CHK.	APP.		
56			BY	CHK.	APP.		
57			BY	CHK.	APP.		
58			BY	CHK.	APP.		
59			BY	CHK.	APP.		
60			BY	CHK.	APP.		
61			BY	CHK.	APP.		
62			BY	CHK.	APP.		
63			BY	CHK.	APP.		
64			BY	CHK.	APP.		
65			BY	CHK.	APP.		
66			BY	CHK.	APP.		
67			BY	CHK.	APP.		
68			BY	CHK.	APP.		
69			BY	CHK.	APP.		
70			BY	CHK.	APP.		
71			BY	CHK.	APP.		
72			BY	CHK.	APP.		
73			BY	CHK.	APP.		
74			BY	CHK.	APP.		
75			BY	CHK.	APP.		
76			BY	CHK.	APP.		
77			BY	CHK.	APP.		
78			BY	CHK.	APP.		
79			BY	CHK.	APP.		
80			BY	CHK.	APP.		
81			BY	CHK.	APP.		
82			BY	CHK.	APP.		
83			BY	CHK.	APP.		
84			BY	CHK.	APP.		
85			BY	CHK.	APP.		
86			BY	CHK.	APP.		
87			BY	CHK.	APP.		
88			BY	CHK.	APP.		
89			BY	CHK.	APP.		
90			BY	CHK.	APP.		
91			BY	CHK.	APP.		
92			BY	CHK.	APP.		
93			BY	CHK.	APP.		
94			BY	CHK.	APP.		
95			BY	CHK.	APP.		
96			BY	CHK.	APP.		
97			BY	CHK.	APP.		
98			BY	CHK.	APP.		
99			BY	CHK.	APP.		
100			BY	CHK.	APP.		

Ledger for Site Diagram
Produced Fluid: _____
Produced Oil: _____
Produced Gas: _____
Flare/Vent: _____

Type of Lease: Federal
State Lease #: N/A
Federal Lease SHL #: NMMNM128366
CA/Agreement #: _____
Property Code: 313919
OGRID #: 229137

CONCHO
NORTHERN DELAWARE BASIN ASSET
PRODUCTION FACILITIES
SITE FACILITY DIAGRAM
BLACK PEARL 1 FEDERAL 3H & 4H
LEA COUNTY
TERRAPIN DRIVE
309/246
D-1700-81
REV C