



HOBBS OCD

AUG 22 2011

RECEIVED

August 19, 2011

VIA FEDERAL EXPRESS 7950-9929-9392

New Mexico Oil Conservation Division
District 1
1625 N. French Drive
Hobbs, NM 88240

Attn: Cindy Herrera

Ref: APD Approved Permits for Sharbro Federal #10 (API 30-25-40218)
and Sharbro Federal #11 (API 30-25-40219)

Dear Cindy:

Enclosed please find a copy of the APD permits for both Sharbro Federal #10 and Sharbro Federal #11. Both of these permits were approved by the BLM (August 4, 2011) and NMOCD (August 5, 2011). Upon checking the NMOCD website, I noticed that both Exhibit 6 (Plan of Development) and Exhibit 10 (C-144 CLEZ schematic) are incorrect. The BLM had rejected the original two exhibits so EnerVest resubmitted. Per conversation with Duncan Whitlock of the BLM/Farmington office, both these exhibits are approved and in BLM's file. Is it possible for you to rescan? I am also attaching a copy of the C144 CLEZ for the state's file.

Should you have any question or comments, please feel free to call the undersigned at 713-495-1571. Thank you very much.

Very truly yours,

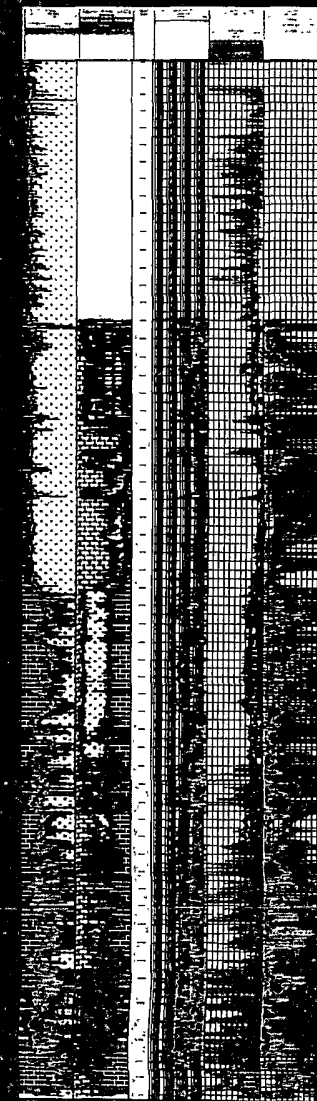
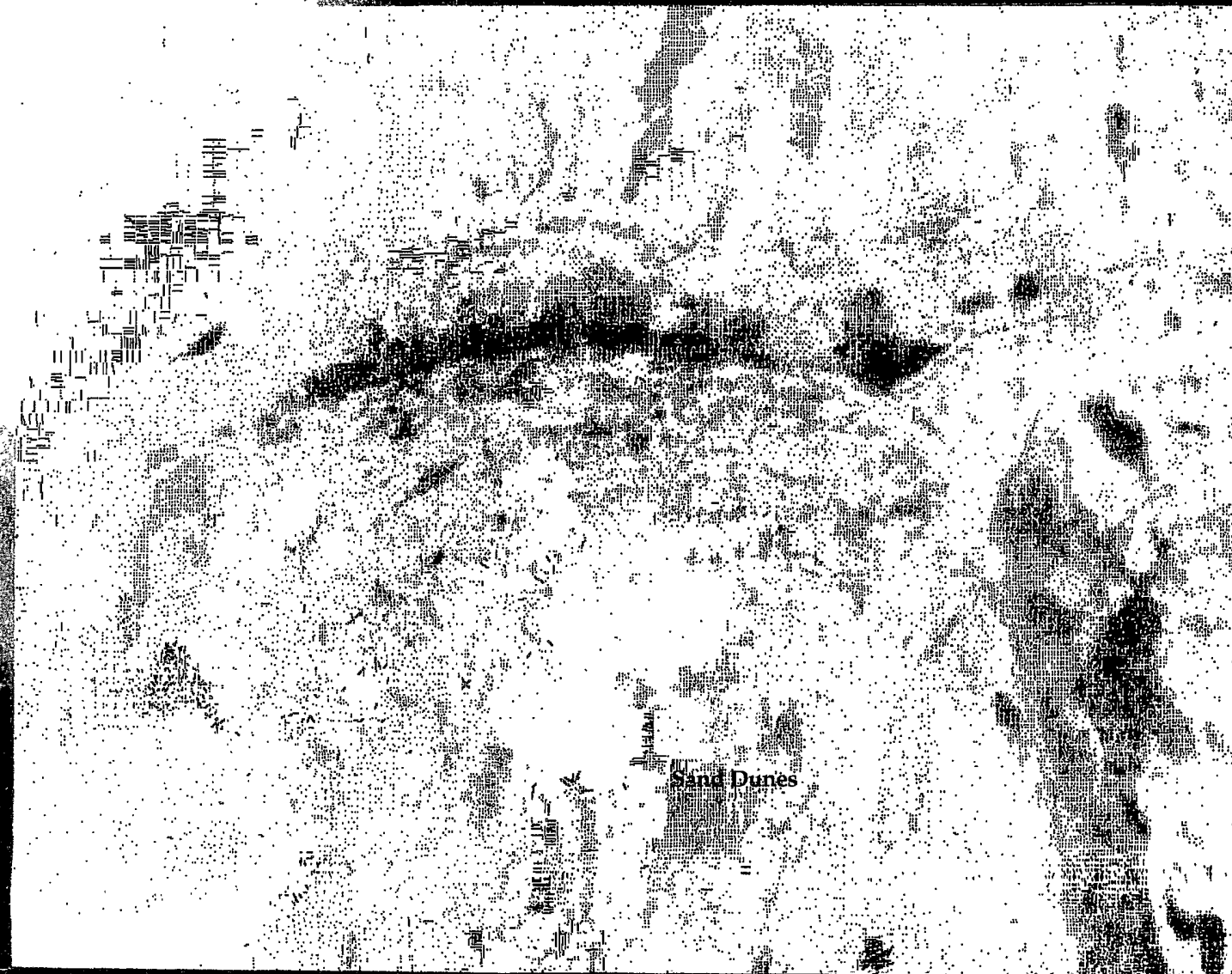
EnerVest Operating, Ltd.

By: 
Janet M. Bienski, Regulatory Assistant

Enc.

AUG 23 2011

Permian Basin- Sand Dunes POD

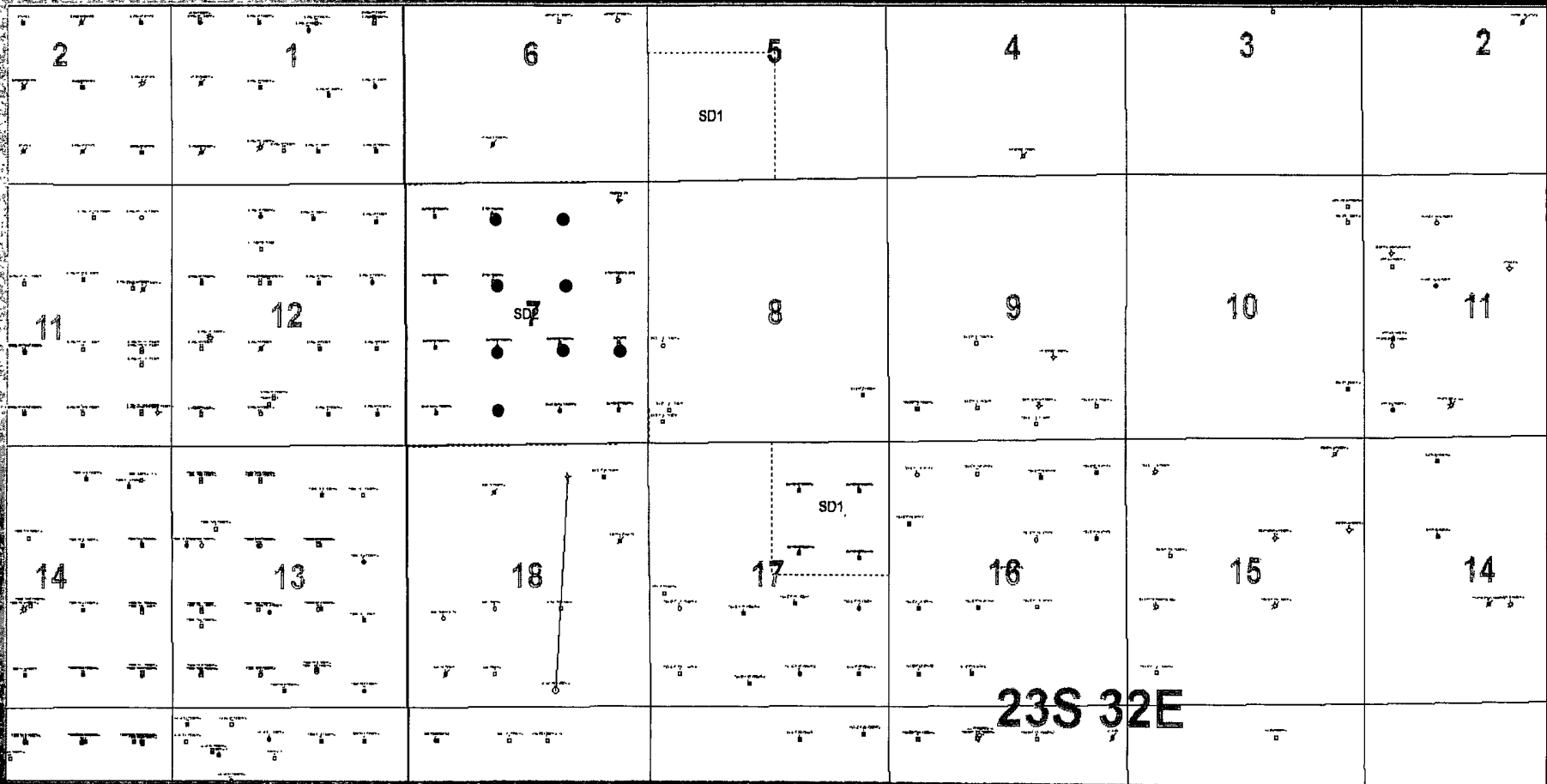


Amended

EXHIBIT 6

30-025-40218

Plan of Development - Acreage Plan



2000/09

ANALYSIS



Plan of Development - PUDS



SHARBRO FEDERAL

BITSY FEDERAL

PUD
6

FEDERAL WL

SHARBRO FEDERAL

BITSY FEDERAL

PUD
7

BITSY FEDERAL SWD

SD7

SHARBRO FEDERAL

SHARBRO FEDERAL

SHARBRO FEDERAL

SHARBRO

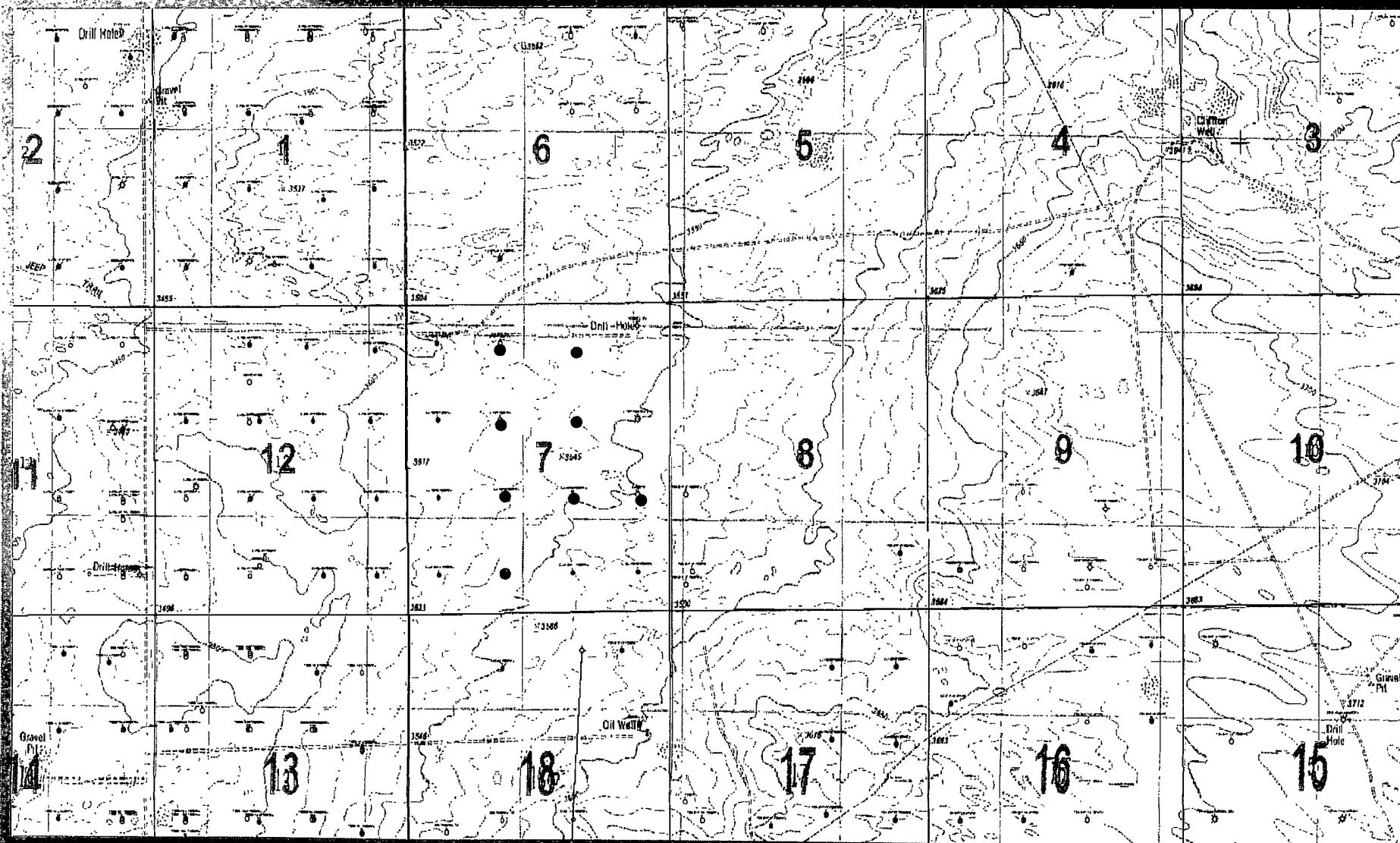
BLUE QUAIL FEDERAL

BLUE QUAIL
FEDERAL

BLUE QUAIL FEDERAL

SHARBRO FEDERAL

Plan of Development-Topographic



Plan of Development-Proposed Hookup

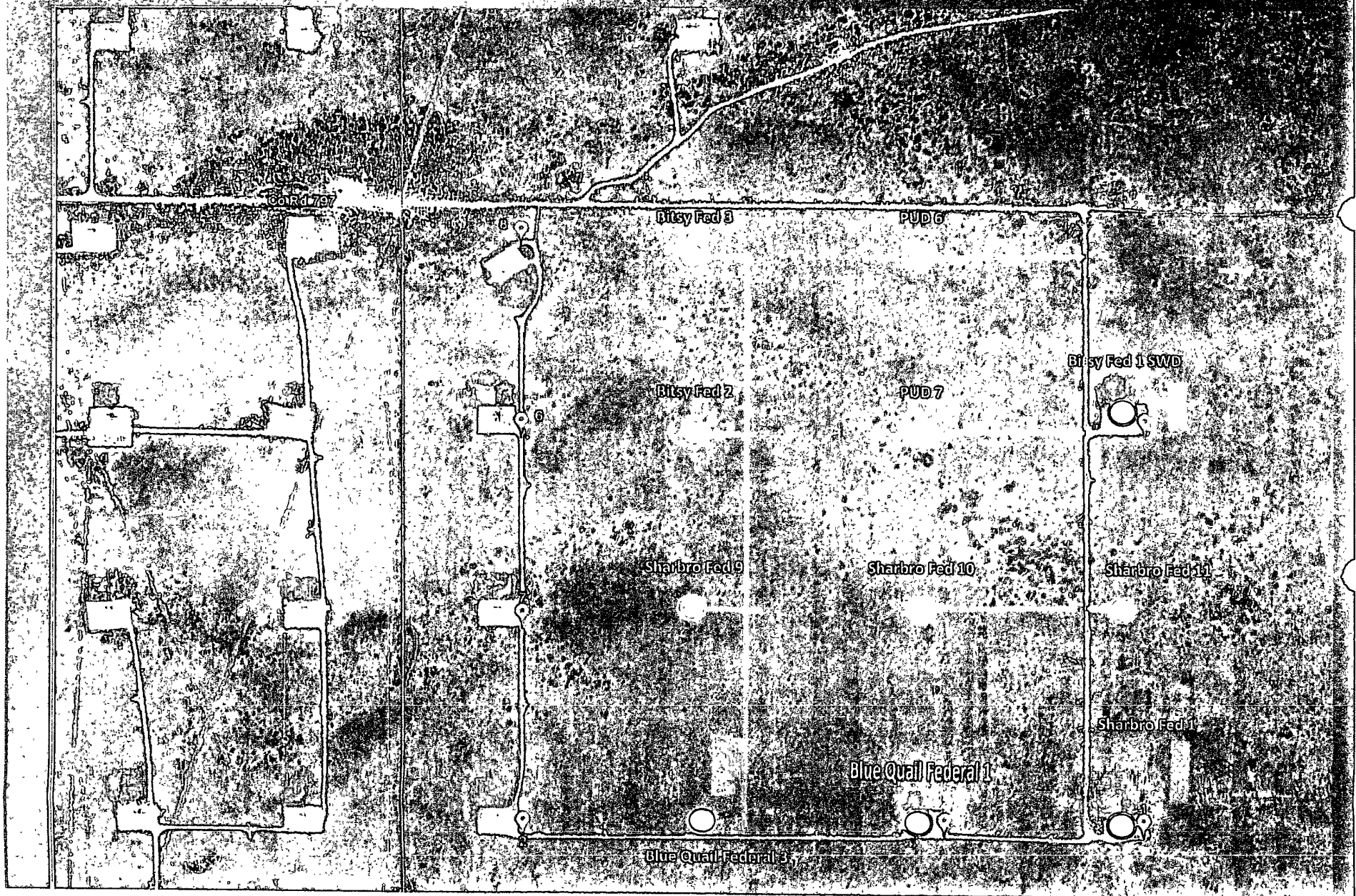
Note: All flowlines, SWD lines, Utility lines are along lease roads.

○ Existing Wells

— Proposed Lease Roads

○ Proposed Wells

Existing Batteries

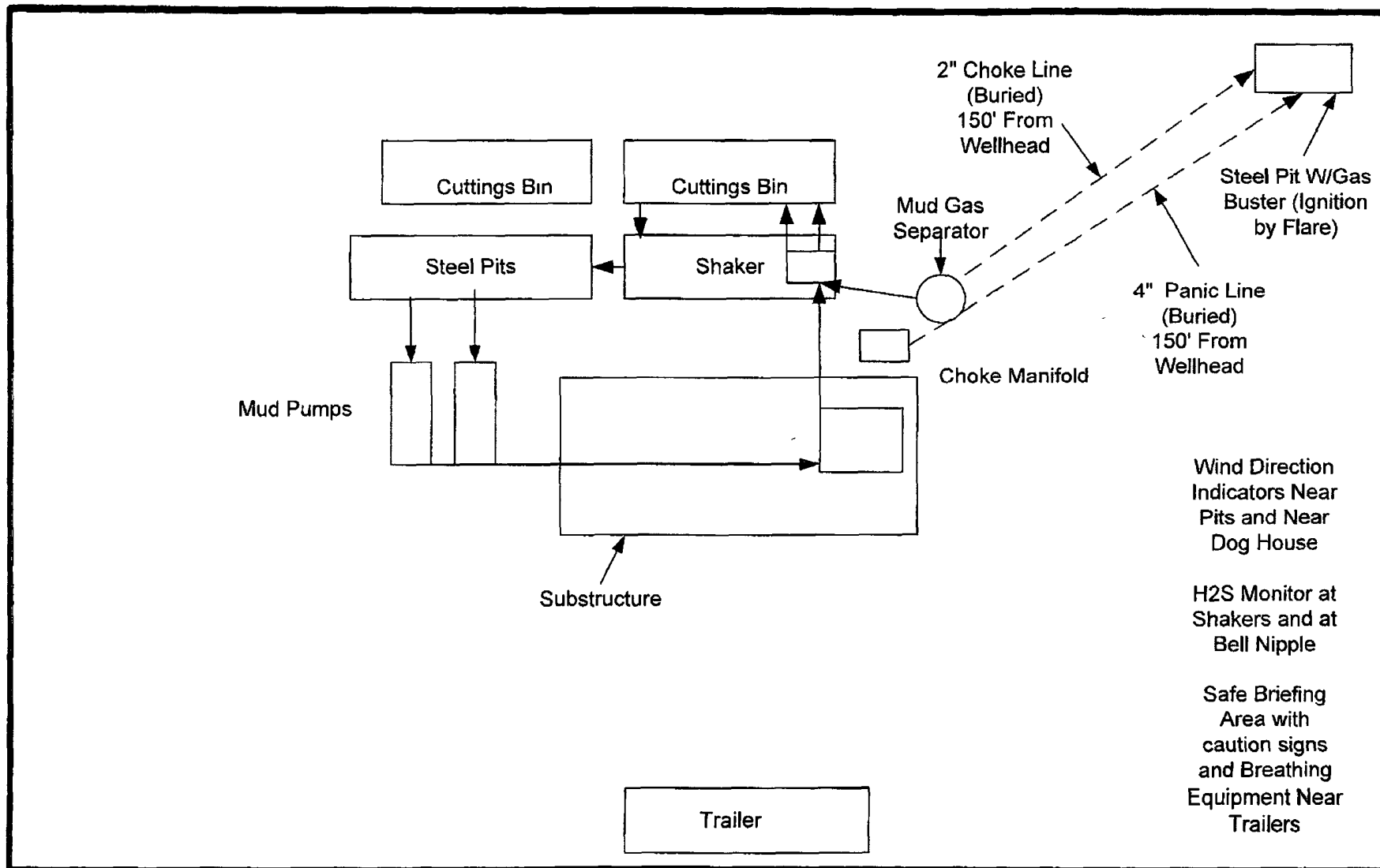


Plan of Development- Drill and Completion



	Aug 2011				Sep 2011				Oct 2011				Nov 2011				Dec 2011				Jan 2012				Feb 2012			
	1wk	2wk	3wk	4wk	1wk	2wk	3wk	4wk	1wk	2wk	3wk	4wk	1wk	2wk	3wk	4wk	1wk	2wk	3wk	4wk	1wk	2wk	3wk	4wk	1wk	2wk	3wk	4wk
Shabro 10																												
Drill	■	■																										
Comp			■																									
On-line				■																								
Shabro 11																												
Drill					■	■																						
Comp							■																					
On-line																												
Shabro 9																												
Drill									■	■																		
Comp											■																	
On-line												■																
Bitsy Federal 2																												
Drill													■	■														
Comp														■														
On-line															■													
Bitsy Federal 3																												
Drill																	■	■										
Comp																		■										
On-line																			■									
PUD #6																												
Drill																					■	■						
Comp																						■						
On-line																								■				
PUD #7																												
Drill																												
Comp																												
On-line																									■	■		

SAND DUNES LOCATION LAYOUT



Amended EXHIBIT 10
30-025-40218