



HOBBS OCD

AUG 22 2011

RECEIVED

August 19, 2011

VIA FEDERAL EXPRESS: 7950-9929-9392

New Mexico Oil Conservation Division
District 1
1625 N. French Drive
Hobbs, NM 88240

Attn: Cindy Herrera

Ref: APD Approved Permits for Sharbro Federal #10 (API 30-25-40218)
and Sharbro Federal #11 (API 30-25-40219)

Dear Cindy:

Enclosed please find a copy of the APD permits for both Sharbro Federal #10 and Sharbro Federal #11. Both of these permits were approved by the BLM (August 4, 2011) and NMOCD (August 5, 2011). Upon checking the NMOCD website, I noticed that both Exhibit 6 (Plan of Development) and Exhibit 10 (C-144 CLEZ schematic) are incorrect. The BLM had rejected the original two exhibits so EnerVest resubmitted. Per conversation with Duncan Whitlock of the BLM/Farmington office, both these exhibits are approved and in BLM's file. Is it possible for you to rescan? I am also attaching a copy of the C144 CLEZ for the state's file.

Should you have any question or comments, please feel free to call the undersigned at 713-495-1571. Thank you very much.

Very truly yours,

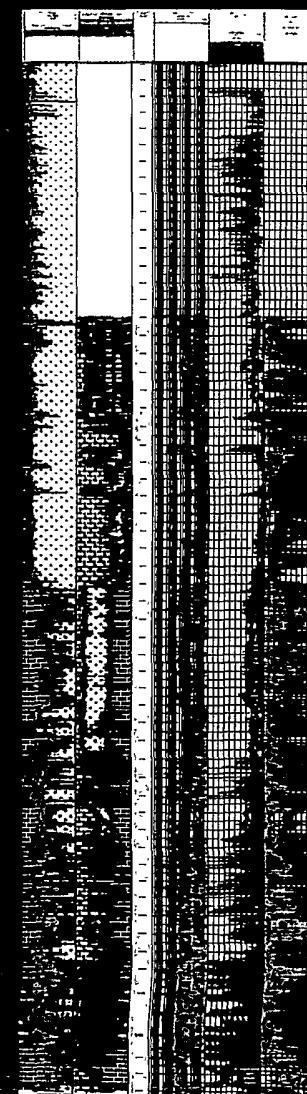
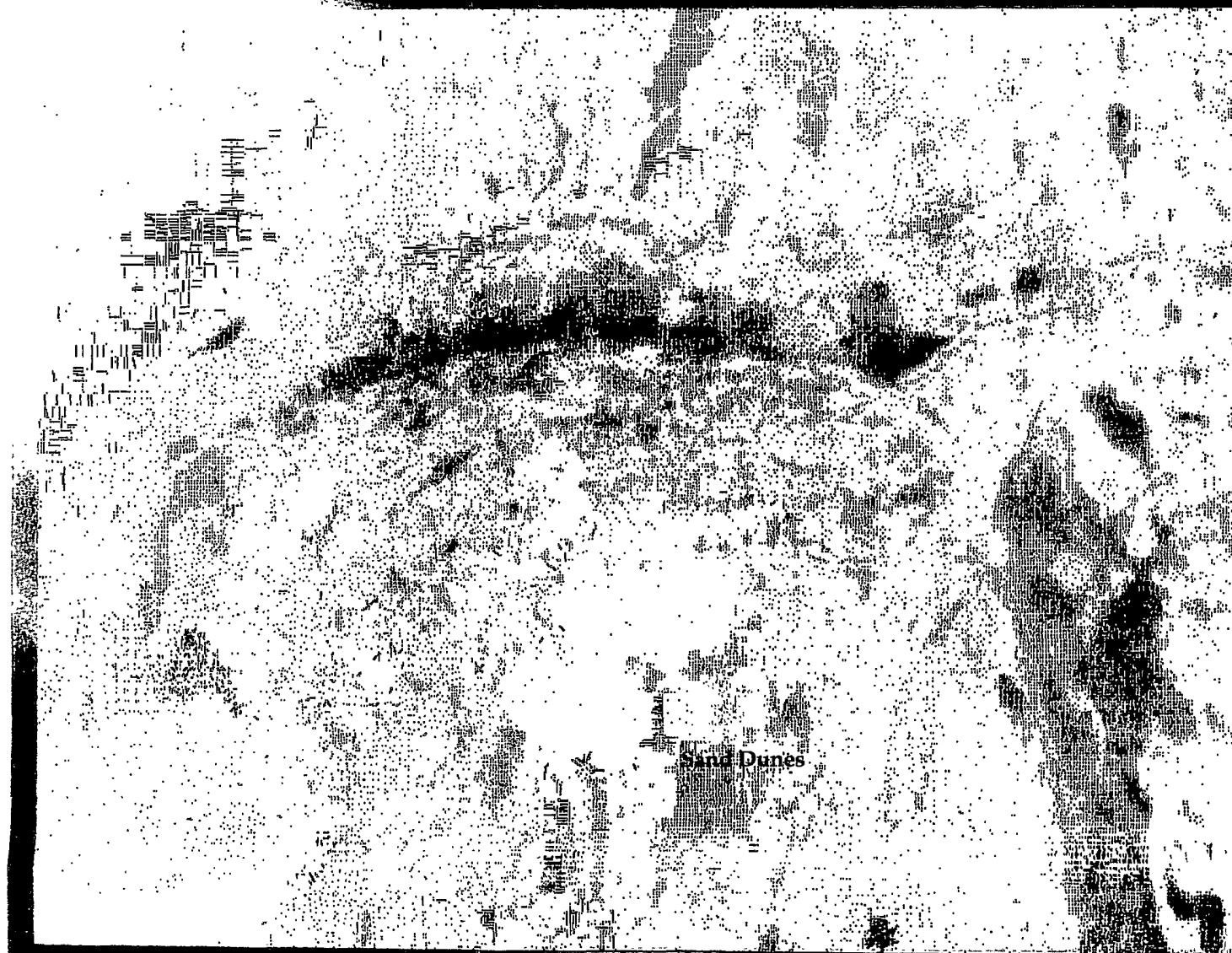
EnerVest Operating, Ltd.

By: 
Janet M. Bienski, Regulatory Assistant

Enc.

AUG 23 2011

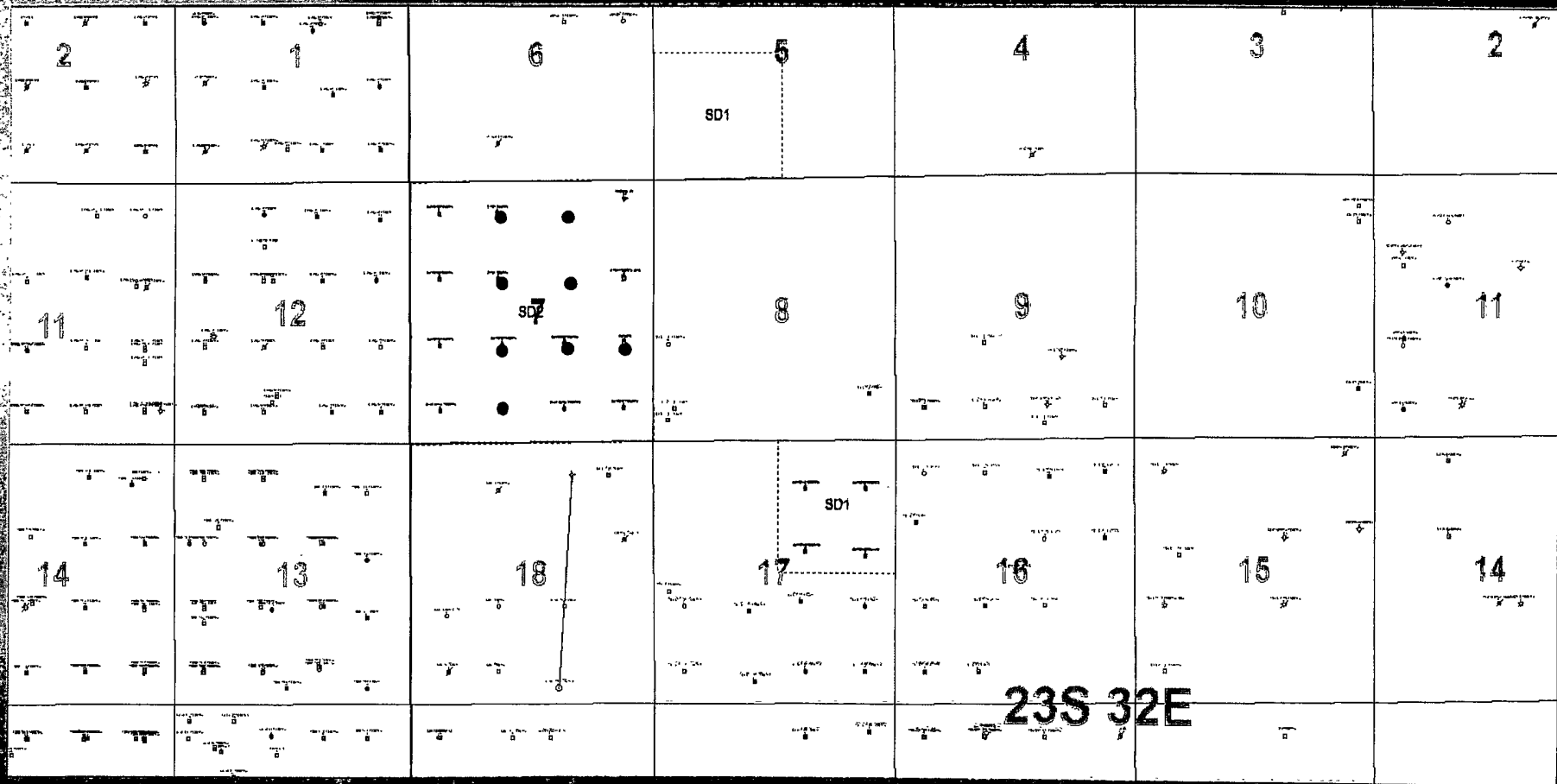
Permian Basin- Sand Dunes POD



Amended

EXHIBIT 6

30-025-40219



SHARBRO FEDERAL

BITSY FEDERAL

PUD
6

FEDERAL WL

SHARBRO FEDERAL

BITSY FEDERAL

PUD
7

BITSY FEDERAL SWD

SD7

SHARBRO FEDERAL

SHARBRO FEDERAL

SHARBRO FEDERAL

SHARBRO

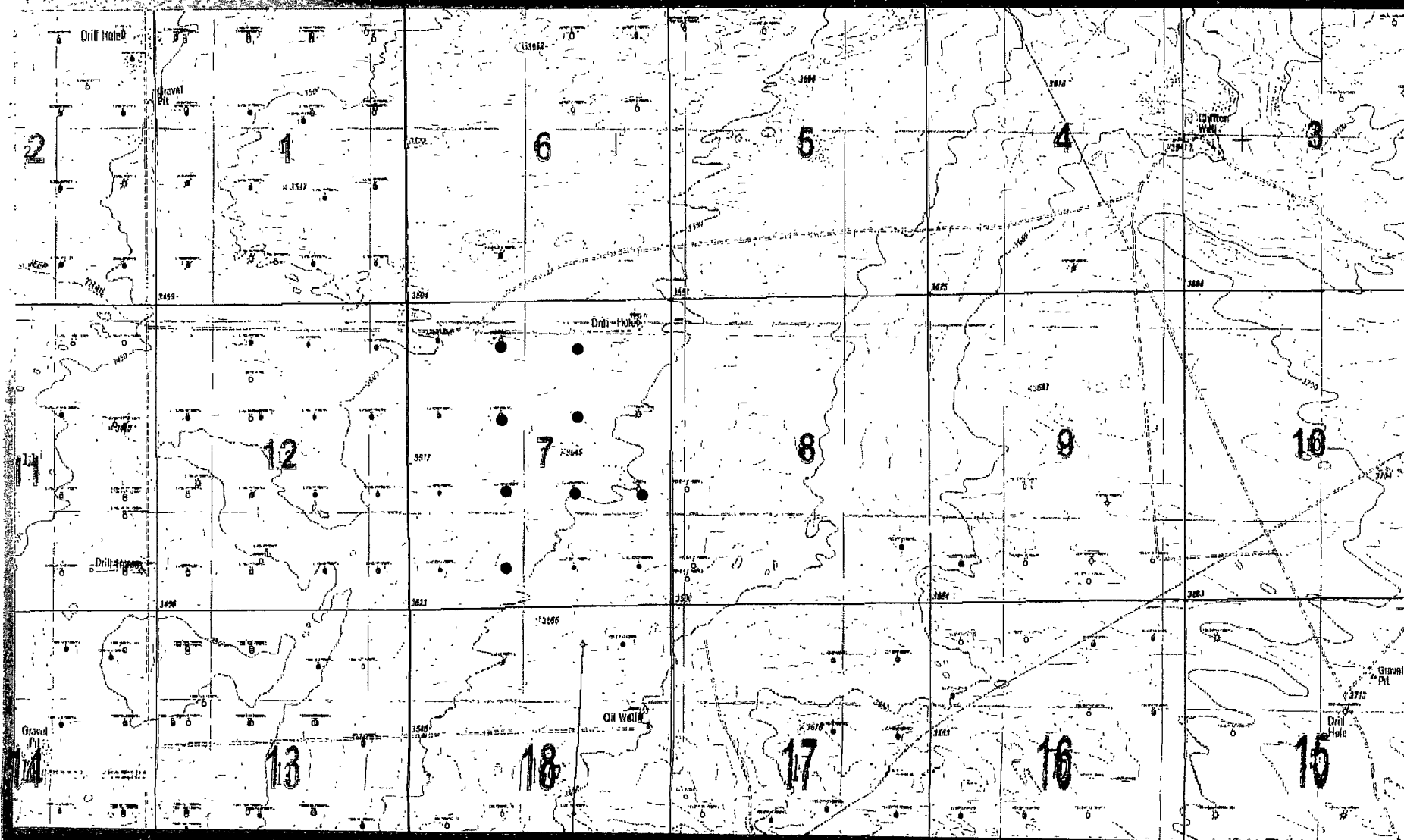
BLUE QUAIL FEDERAL

BLUE QUAIL
FEDERAL

BLUE QUAIL FEDERAL

SHARBRO FEDERAL

Plan of Development Map



Plan of Development Proposed

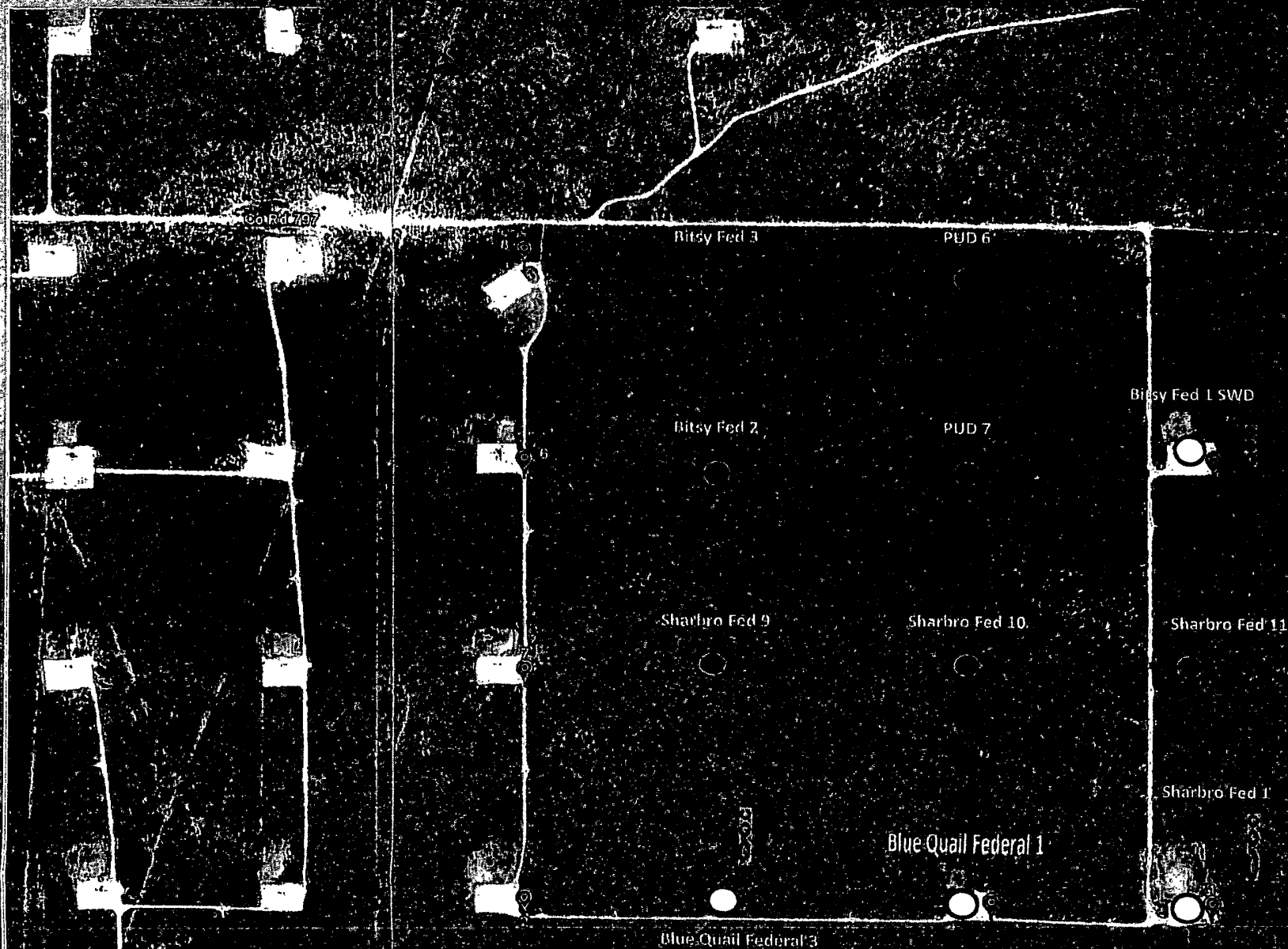
Note: All flowlines, SWD lines, Utility lines are along lease roads.

● Existing Wells

— Proposed Lease Roads

○ Proposed Wells

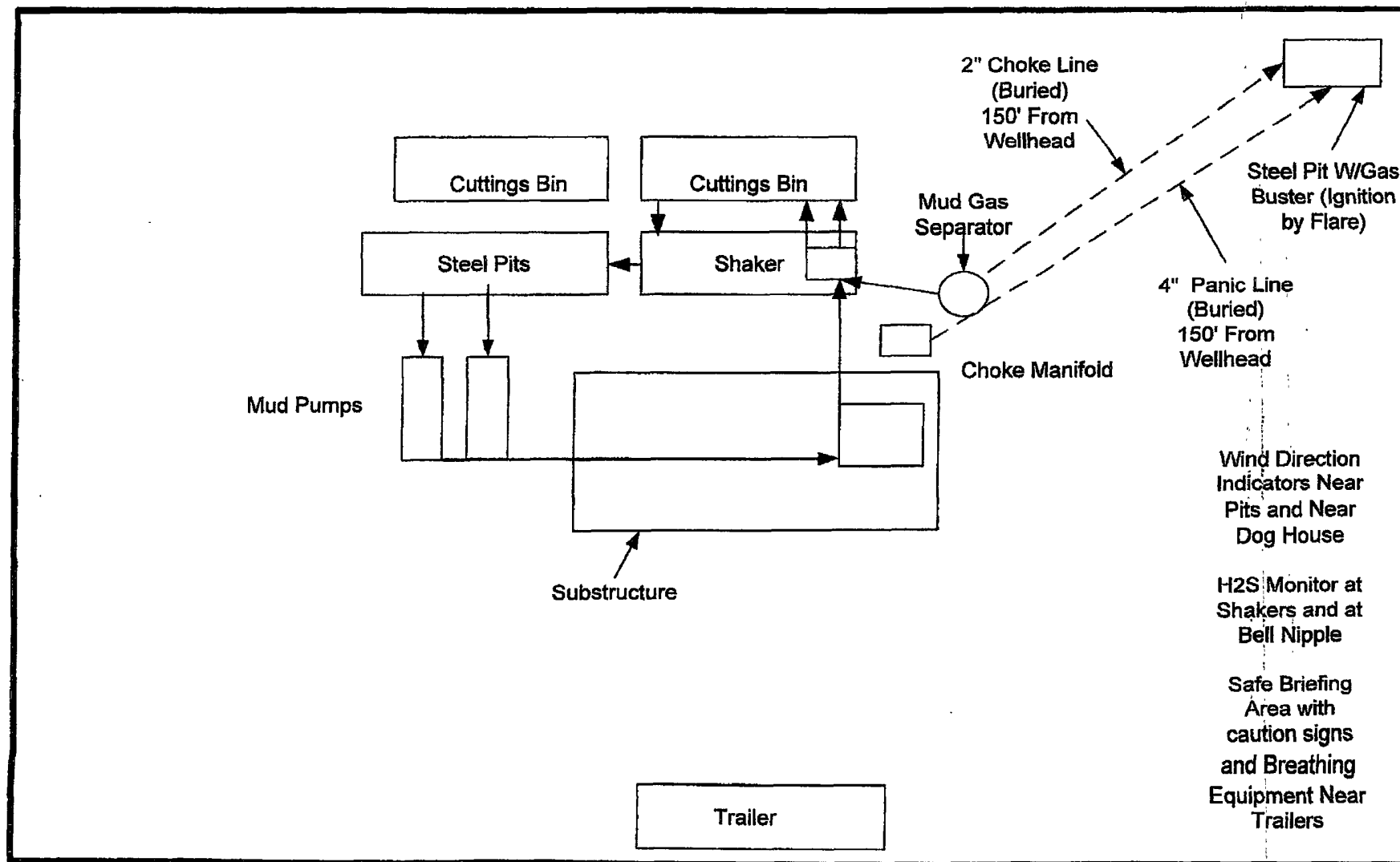
Existing Batteries



Plan of Development of District

[illegible]

SAND DUNES LOCATION LAYOUT



30-025-40219

Amended

EXHIBIT 10