

Rec'd 09/28/2020 - NMOCD

Caza Petroleum, Inc.
Sioux 35-24 State Fed Com 12H
Rig: Citadel 2



Production
T-24650
County: Lea
Supervisor: Chris Garcia

Cementing Job Log

Date	Time	Description	Rate (BPM)	Volume (BBL)	Pressure (PSI)	Details of Operation and Procedure
06/06/2020	12:00	Called Out				Crew called for 1800 location time.
06/06/2020	13:30	Depart For Job				Trucks loaded, job ready. JSA conducted. Depart for location.
06/06/2020	16:00	Arrived on Location				Crew and equipment on location.
06/06/2020	16:05	Rigs Progress at Arrival				Rig running casing.
06/06/2020	16:30	Rig Equipment				Spot units, commence rig up. JSA conducted.
06/06/2020	18:30	Casing On Bottom				Rig on bottom with casing.
06/06/2020	18:45	Mix Spacer				Mix 50 bbls 11.5 GXT Spacer.
06/06/2020	19:00	Rig Circulate Hole		880		Rig bursting air lock and circulating through cement head.
06/06/2020	19:15					
06/06/2020	21:45	Conduct Meetings				Cement job execution JSA. Job roles assigned. Hazards discussed.
06/06/2020	22:10	Fill Lines	1.5	3	150	Fill lines with 3 bbls FW.
06/06/2020	22:13	Pressure Test			9500	Test lines to 9500 psi.
06/06/2020	22:17	Start Spacer	3	50	780	Start pumping 50 bbls 11.5# GXT spacer. 1st 3 bbls to open top.
06/06/2020	22:30	Start Cement	6	368	710	Start pumping 368 bbls (925 sxs) 11.5# lead slurry. Verified weight with mud scale.
06/07/2020	00:05	Start Cement	4	618	1100	Lead slurry complete. Start pumping 618 bbls (2940 sxs) 14.2# tail slurry. Verified weight with mud scale.
06/07/2020	01:35	Shut Down				Shutdown due to poor cement delivery. Adjust product hoses. Re commence mixing tail slurry
06/07/2020	03:28	Shut Down		618		Tail slurry complete. Shut down, align manifold to wash lines and drop top plug.
06/07/2020	03:29	Wash Out Pumps & Lines				Wash lines to open top.
06/07/2020	03:33	Release Plug	4		250	Drop 5.5 top plug. Co man verified release of plug.
06/07/2020	03:34	Start Displacement	7.5		550	Displace casing with 587 bbls FW plus KCL.
06/07/2020	05:25	Decrease Rate	3	550	3500	Slow rate to land plug.
06/07/2020	05:37	Bump Plug	3	587	4600	Bump plug at calculated displacement volume. Hold 5 min. Bump 3600-4600 psi.
06/07/2020	05:42	Check Floats				Bleed off pressure, 9 bbls back. floats holding.
06/07/2020	05:55	Rig Equipment				Rig down all equipment.
06/07/2020	07:00	Job Complete				Job complete. depart location. JSA conducted.
06/07/2020	16:15	Discuss Job With Customer				Discuss 5.5 casing cement job with client. TD: 22350. OH: 6 3/4". TC: 22338' 6" 24.5# P110. FC: 22328'. PC: 9 5/8" 40# J55 @ 9204'. TVD: 12,565'. MUD: 11.9# DISP: 587 BBLS FW plus KCL.

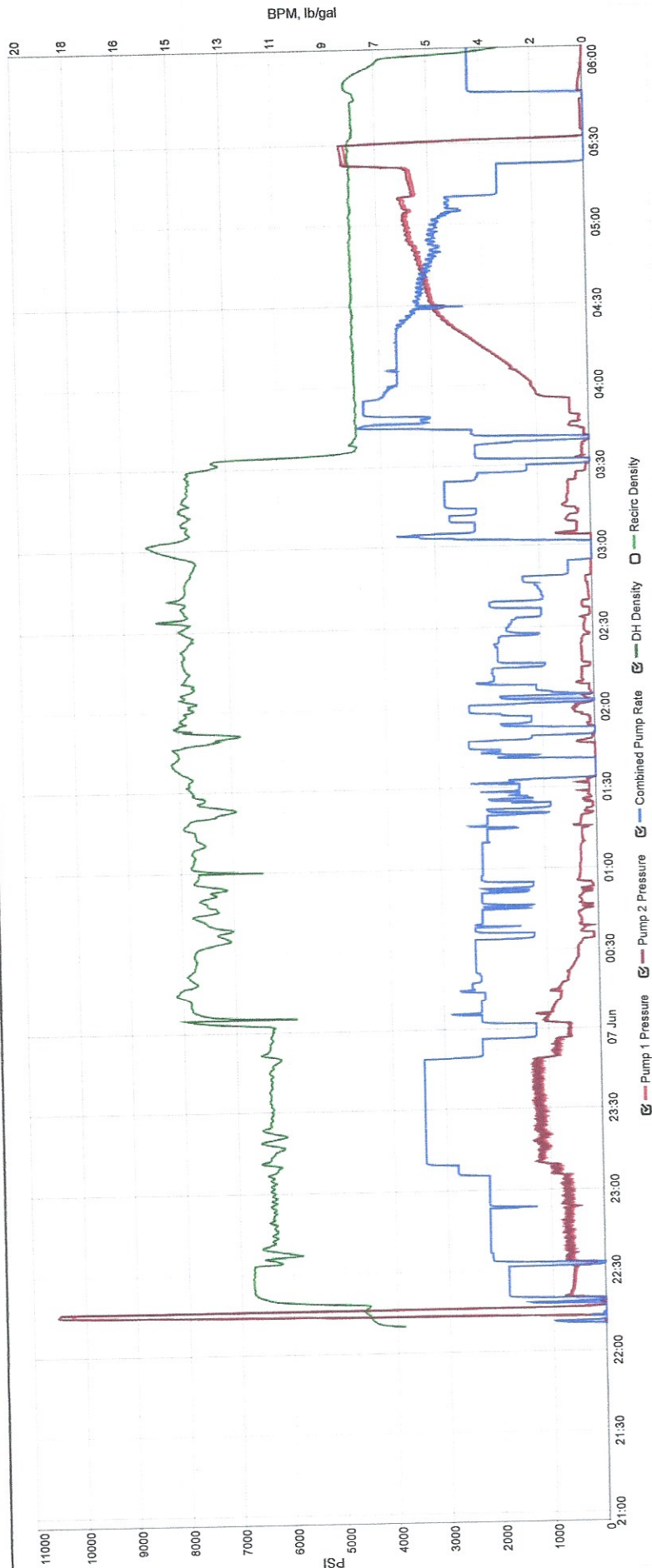
Cement Heights and Tops			Spacer			
Slurry Type	Cement Height	Cement Top	PPG	YLD	41.88	H2O
Spacer				1	lb/bbl	GXT Spacer
Lead CMT	6759	0		0.1	gal/bbl	CPT-503L
Tail CMT	15591	6759		2	lb/bbl	Citric Acid
Crew Members				175	lb/bbl	Barite
				1.5	gal/bbl	Plexaid 830L

Field Supervisor	Chris Garcia		
Operator	Roberto Kelly		
Bulk Hand	SEXTON ROYAL		
Bulk Hand	Sergio Flores		
Bulk Hand	Ricky Aponte		
Bulk Hand	Brock Durham		
Bulk Hand	Cesar Sandoval		
Casing Information			
	Previous Casing	Hole & Casing Info	
Hole Size 1		8.5	
MD:		22150	
TVD:		12000	
Casing Size	9.625	6.000	
Casing Grade		P110	
Casing Length	9130	22328	
Casing Weight	40.00	24.500	
Casing ID		5.200	
DV Tool			
Shoe Joint		90	
Burst Pressure	9752		
Cement Returns	99		
Mud Info		Water Info	
Type	OBM	PH	7
Weight	11.2	Chlrd	350
		Temp	77

Lead CMT					
11.5	PPG	2.23	YLD	11.93	H2O
			925	Sacks	50/50 Poz H
			5	bwow	Sodium Chloride (Salt)
			7	%	Bentonite Gel
			0.5	%	CPT-19
			0.8	%	CPT-45
			0.4	%	CPT-503P
			0.25	lbs/sk	Cellophane Flakes
			3	lbs/sk	Kol Seal
			0.2	%	CPT-20A
			0.2	%	Citric Acid
Tail CMT					
14.2	PPG	1.18	YLD	4.86	H2O
			2940	Sacks	35/65 Poz H
			2	%	Bentonite Gel
			0.5	%	CPT-30
			0.1	%	D-3
			0.3	%	CPT-45
			0.55	%	CPT-23

CAZA

Sioux 12H



Events

Date	Flag	Total	Description
------	------	-------	-------------